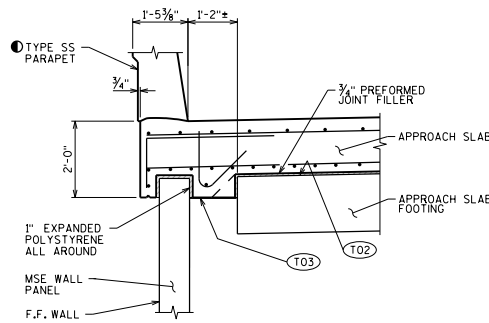


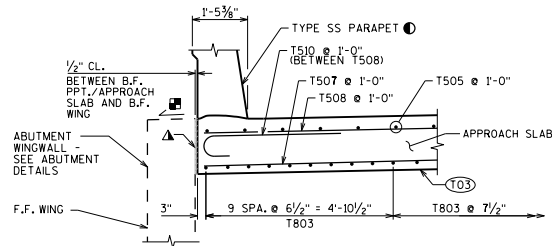
SECTION A-A
(AT MSE WINGWALLS)



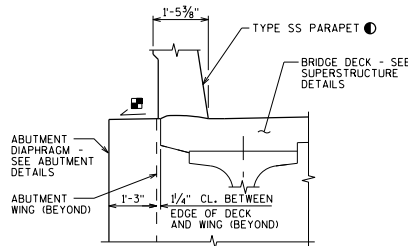
SECTION B-B
(AT MSE WINGWALLS)

LEGEND

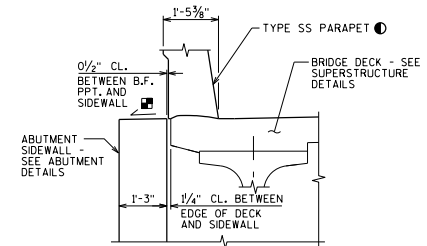
- (T02) STEEL TROWEL TOP SURFACE OF FOOTING AND PLACE MULTIPLE LAYERS (0.03" MIN. TOTAL THK.) OF POLYETHYLENE SHEETS OVER THE ENTIRE TOP OF FOOTING.
- (T03) PLACE MULTIPLE LAYERS (0.03" MIN. TOTAL THK.) OF POLYETHYLENE SHEETS OVER THE ENTIRE TOP OF SUBGRADE BENEATH SLAB.
- ▲ SEAL ALL EXPOSED HORIZONTAL AND VERTICAL SURFACES OF 1/2" FILLER WITH NON-STAINING GRAY NON-BITUMINOUS JOINT SEALER. (1" DEEP AND HOLD 1/2" BELOW SURFACE OF CONCRETE).
- SEE PARAPET STANDARD DETAILS FOR REINFORCEMENT, LOCATION OF NAME PLATE AND BENCH MARK WITH RESPECT TO THE END OF PARAPET, ETC.
- ☒ CONST. JOINT-STRIKE OFF AS SHOWN AND LEAVE ROUGH FOR DECK POUR MATCH BRIDGE X-SLOPE.
- ▣ SLOPE TO DRAIN
- * SECTION REPRESENTATIVE OF SIMILAR LOCATION AS SHOWN ON STANDARD 12.10 FOR DIFFERENT APPLICATION.



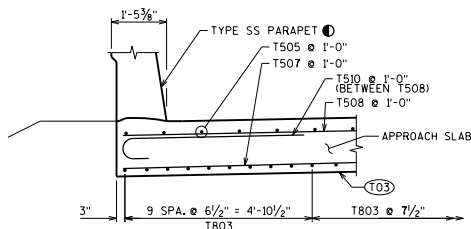
SECTION C-C
(AT WINGWALLS PARALLEL TO BRIDGE)



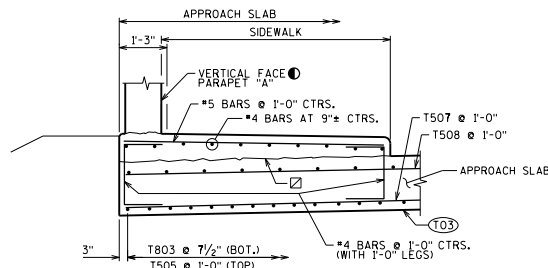
SECTION D-D
(AT WINGWALLS PARALLEL TO BRIDGE - A1 ABUT.)



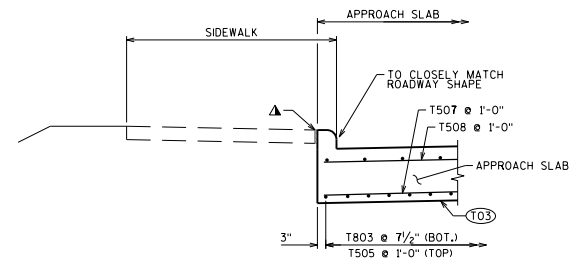
SECTION D-D*
(AT WINGWALLS PARALLEL TO BRIDGE - A3 ABUT.)



SECTION C-C*
(AT WINGWALLS PARALLEL TO ABUT.)




SECTION C-C*
(AT WINGWALLS PARALLEL TO ABUT.)



SECTION C-C*
(AT WINGWALLS PARALLEL TO ABUT.)

SECTIONS A-A THRU G-G ARE FROM STANDARD 12.10

STRUCTURAL APPROACH SLAB DETAILS I	
	BUREAU OF STRUCTURES
APPROVED: <i>Laura Shadewald</i>	DATE: 1-20