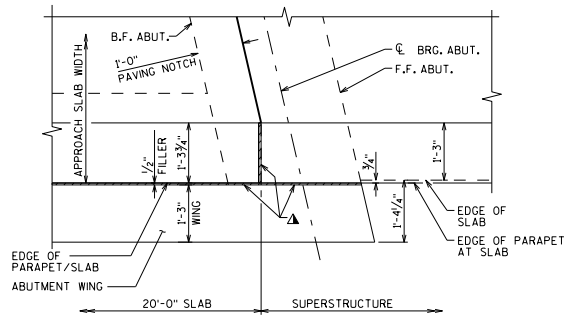


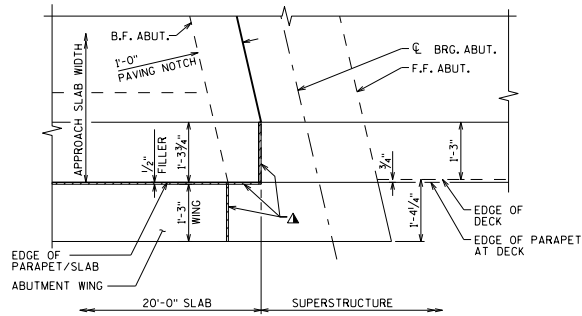
LEGEND

- ▲ SEAL ALL EXPOSED HORIZONTAL AND VERTICAL SURFACES OF 1/2" FILLER WITH NON-STAINING GRAY NON-BITUMINOUS JOINT SEALER, (1" DEEP AND HOLD 1/4" BELOW SURFACE OF CONCRETE).
- * PARTIAL PLAN REPRESENTATIVE OF SIMILAR LOCATION AS SHOWN ON STANDARD 12.10 FOR DIFFERENT APPLICATION.



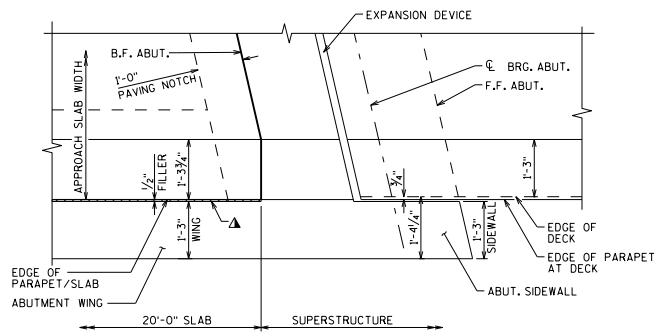
APPROACH SLAB PARTIAL PLAN

(AT WINGWALLS PARALLEL TO BRIDGE - A1 ABUT. - SLAB SPAN)



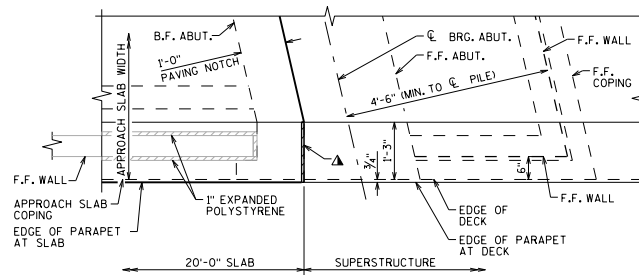
APPROACH SLAB PARTIAL PLAN

(AT WINGWALLS PARALLEL TO BRIDGE - A1 ABUT. - GIRDER SPAN)



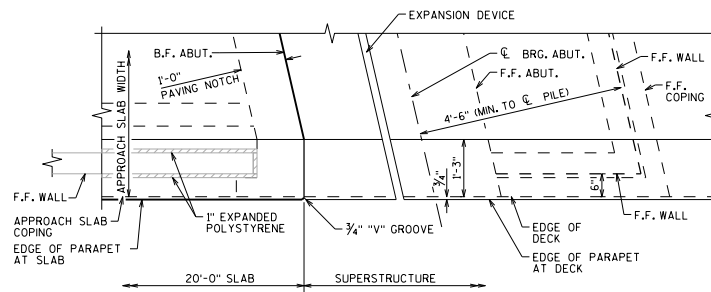
APPROACH SLAB PARTIAL PLAN *

(AT WINGWALLS PARALLEL TO BRIDGE - A3 ABUT. - GIRDER SPAN)



APPROACH SLAB PARTIAL PLAN *

(AT WINGWALLS PARALLEL TO BRIDGE - A1 ABUT. AT MSE WINGWALLS - GIRDER SPAN)



APPROACH SLAB PARTIAL PLAN *

(AT WINGWALLS PARALLEL TO BRIDGE - A3 ABUT. AT MSE WINGWALLS - GIRDER SPAN)

PARTIAL PLANS SHOWN HERE ARE FROM STANDARD 12.10

**STRUCTURAL APPROACH
SLAB DETAILS 3**



APPROVED: *Laura Shadewald* DATE: 7-18