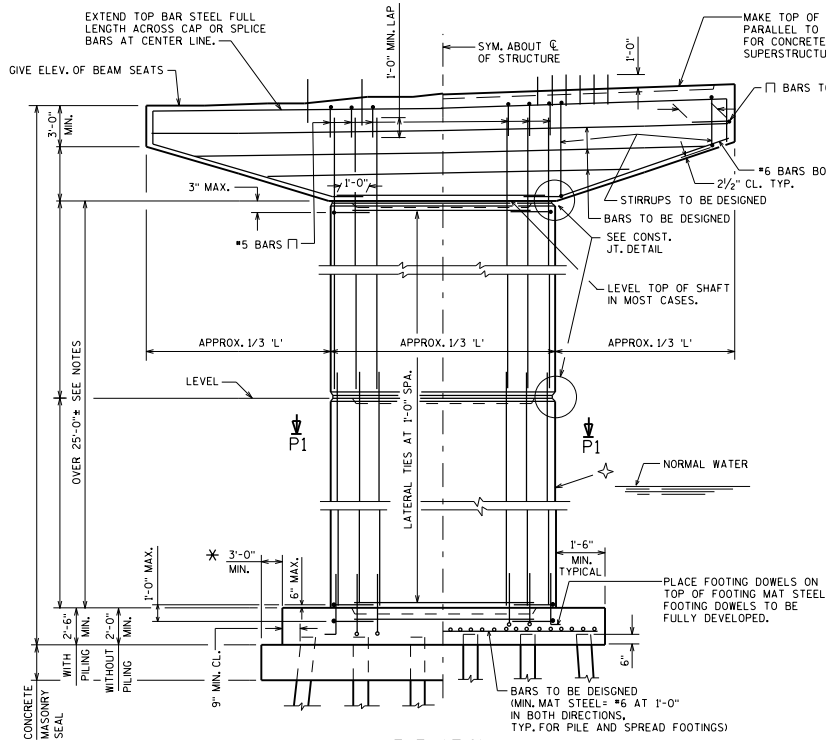
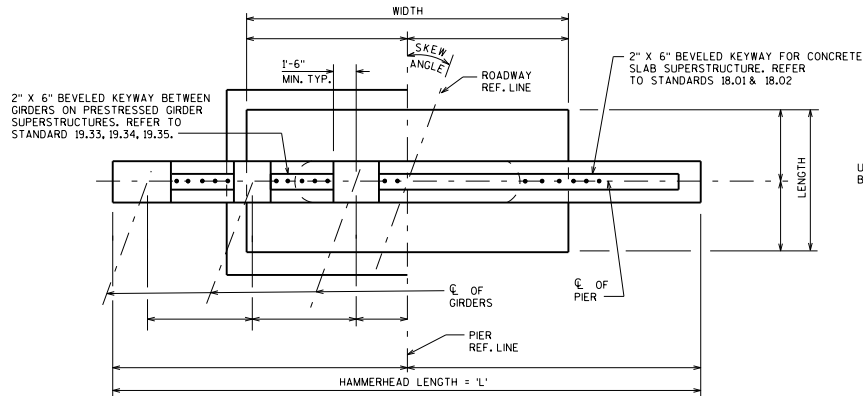


**GIRDER STRUCTURES**

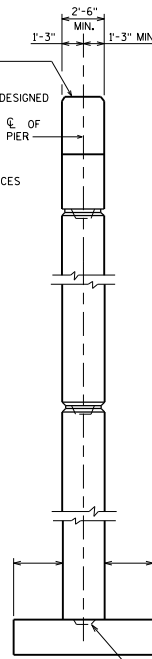
**CONCRETE SLAB STRUCTURES**



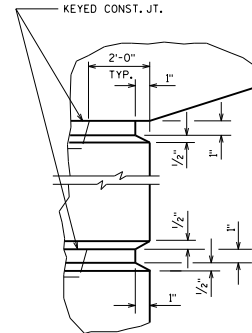
**ELEVATION**  
LOOKING UP STATION



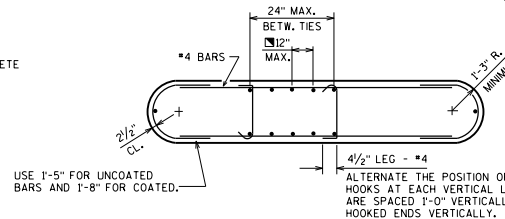
**PLAN**



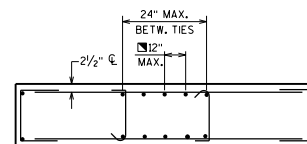
**END VIEW**



**CONST. JT. DETAIL**



**SECTION P1**



**ALTERNATE SECTION P1**

**DESIGNER NOTES**

ALL BAR SPLICES TO BE BASED ON "CLASS C" TENSION LAP SPLICE UNLESS OTHERWISE SHOWN.  
OPTIONAL KEYED CONSTRUCTION JOINTS IN SHAFT, IF PROVIDED, SHALL BE PLACED APPROXIMATELY 2'-0" ABOVE NORMAL WATER ELEVATION. OPTIONAL KEYED CONSTRUCTION JOINTS IN SHAFT SHOULD BE PROVIDED SO THAT THE MAXIMUM HEIGHT OF POUR NEED NOT EXCEED 25'-0"+. DETAIL BAR SPLICES AT OPTIONAL JOINTS IF THE BAR PROJECTION WOULD BE GREATER THAN 20'-0"+. RUSTICATIONS SHOWN IN "CONST. JT. DETAIL" MAY BE OMITTED AT THE OPTION OF THE DESIGNER.

KEYED CONSTRUCTION JOINTS SHALL BE FORMED BY BEVELED KEYWAY 4" DEEP X 1/3 THICKNESS OF SHAFT X 4'-0" LESS THAN LENGTH OF SHAFT.

▲ A STANDARD SHAFT TAPER OF 10X MAY BE USED AT THE OPTION OF THE DESIGNER. (LATERAL DIRECTION ONLY)

SHAFT MAY BE TAPERED IN ONE OR TWO DIRECTIONS WHEN REQUIRED FOR STRUCTURAL REASONS.

A NON-STANDARD SHAFT CROSS-SECTION, SHAPE, OR TAPER, NOT REQUIRED FOR STRUCTURAL REASONS, MAY BE USED ONLY WITH THE APPROVAL OF THE STRUCTURES DESIGN SECTION.

BEARING SEAT AREAS SHALL BE LEVEL EXCEPT FOR THE TWO CASES LISTED BELOW:

1. FOR GIRDERS WITH 1/2" ELASTOMERIC BEARING PADS WHEN THE BOTTOM OF THE GIRDERS SLOPE MORE THAN 1X. SEE STANDARD 13.01.

2. FOR CONCRETE SLAB SUPERSTRUCTURES MAKE THE TOP OF CAP PARALLEL TO GRADE. SEE STANDARD 18.01.

BEAM SEATS MAY BE ANGLED TO MATCH SKEW AT THE DESIGN ENGINEER'S DISCRETION.

SEE STANDARD 12.01 FOR ADDITIONAL REINFORCING STEEL IN BEARING AREA FOR BEAM SEATS OF NON-SLOPED CAPS THAT ARE 4 INCHES OR MORE ABOVE THE LOWEST BEAM SEAT.

■ THIS MAXIMUM VERT. BAR SPACING APPLIES ONLY WHEN THE VERTICAL REINFORCEMENT IS 1X OR MORE OF THE GROSS CONCRETE AREA.

SEE STANDARD 13.01 FOR MINIMUM OFFSETS FROM BEARINGS TO SIDES OF CAP AND TO ADJACENT BEARING SEAT STEPS.

★ INCREASE THIS DIMENSION IF NECESSARY TO PREVENT BATTERED PILES FROM DRIVING INTO SHEET PILING. ALSO INCREASE DIMENSION TO FACILITATE OVERHEAD SHEETING CLEARANCE IF THE TOP OF PIER IS BEYOND NORMAL SEAL SIZE AND NO CONSTRUCTION JOINT IS PROVIDED IN THE SHAFT/CAP REGION (E.G. TAPERED WALL PIERS OR SHORTER HAMMERHEADS WITH RADIUS TRANSITION FROM SHAFT TO CAP).

**PLAN NOTES**

THE BAR SPLICES AT THE OPTIONAL KEYED CONSTRUCTION JOINTS MAY BE ELIMINATED WHETHER OR NOT THE JOINT IS UTILIZED. PAYMENT WILL BE FOR THE ACTUAL BARS INSTALLED.

**HAMMERHEAD PIER**



**BUREAU OF STRUCTURES**

APPROVED: *Laura Shadewald* DATE: 7-21