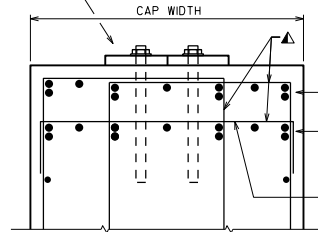


PLAN

PROVIDE ADEQUATE CLEARANCE FOR POST-INSTALLED ANCHORS



SECTION THRU PIER CAP

DETAIL MULTIPLE LAYERS OF BAR STEEL TO AVOID SPACING THAT IS TOO TIGHT. BUNDLED BARS MAY BE USED. AVOID LAPPING BUNDLED BARS.

PROVIDE REINFORCEMENT NECESSARY TO SUPPORT MAIN REINFORCEMENT.

**DESIGNER NOTES**

PROVIDE 4" MIN. CLEAR BETWEEN ANCHOR BOLTS AND REINFORCEMENT.


FOR PIER CAPS UP TO 3'-6" WIDE, PROVIDE AT LEAST ONE 5" MIN. CLEARANCE BETWEEN REINFORCING BARS FOR CONCRETE PLACEMENT BY TREMIE AND FOR VIBRATION. FOR CAPS GREATER THAN 3'-6" WIDE, PROVIDE AT LEAST TWO SUCH GAPS.

SHOW ANCHORS LOCATIONS ON PIER CAP SHEETS.

ABUTMENT REINFORCEMENT LAYOUT SIMILAR TO PIER CAP REINFORCEMENT DETAILING.

**NOTE**

▲ DISPLACE TRANSVERSE STIRRUP BARS AS NEEDED TO PROVIDE 4" MIN. CLEAR BETWEEN ANCHOR BOLTS AND REINFORCEMENT.

PIER CAP REINFORCEMENT DETAILING	
	<b>BUREAU OF STRUCTURES</b>
APPROVED: <i>Laura Shadewald</i>	DATE: 1-17