

CAST-IN-PLACE CONCRETE TRAFFIC BARRIER DETAIL FOR PRECAST WALL PANELS

OPTIONAL CONSTRUCTION JOINTS IN THE PARAPET AND ANCHOR SLAB BETWEEN EXPANSION JOINTS MAY BE USED. RUN BAR REINFORCEMENT THRU THE JOINT. SEE STANDARDS 30.07, 30.12, 30.13 & 30.30-30.32 FOR MINIMUM LAP LENGTHS IN PARAPET BARS. DEFINE CONSTRUCTION JOINT WITH A 3/4" V" GROOVE.

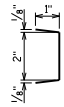
LAP LONGITUDINAL #4 BARS A MINIMUM OF 1'-0".
ALL BAR STEEL SHALL BE EPOXY COATED.
CONCRETE QUANTITY BASED ON 3" PANEL EMBEDMENT.

18" RUBBERIZED MEMBRANE WATERPROOFING TO BE PLACED ON THESE SURFACES AT EACH JOINT.

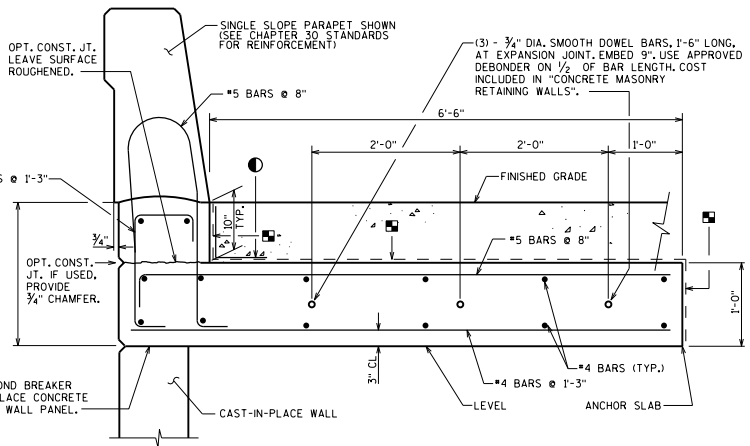
IF THE OPT. CONST. JOINT IS USED, PLACE 18" MEMBRANE WATERPROOFING ALONG THE ENTIRE LONGITUDINAL JOINT. THE MEMBRANE WATERPROOFING SEALING THE OPTIONAL CONST. JOINT IS INCIDENTAL TO THE CONCRETE MASONRY BID ITEM.

RUSTICATION DETAIL

PROVIDE RUSTICATION IF OPT. CONST. JOINT IS USED.



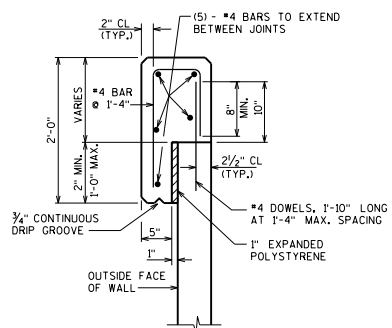
LIQUID OR OTHER BOND BREAKER BETWEEN CAST-IN-PLACE CONCRETE AND CAST-IN-PLACE WALL PANEL.



CAST-IN-PLACE CONCRETE TRAFFIC BARRIER DETAIL FOR CAST-IN-PLACE WALL PANELS

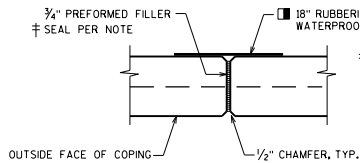
OPTIONAL CONSTRUCTION JOINTS IN THE PARAPET AND ANCHOR SLAB BETWEEN EXPANSION JOINTS MAY BE USED. RUN BAR REINFORCEMENT THRU THE JOINT. SEE STANDARDS 30.07, 30.12, 30.13 & 30.30-30.32 FOR MINIMUM LAP LENGTHS IN PARAPET BARS. DEFINE CONSTRUCTION JOINT WITH A 3/4" V" GROOVE.

LAP LONGITUDINAL #4 BARS A MINIMUM OF 1'-0".
ALL BAR STEEL SHALL BE EPOXY COATED.



CAST-IN-PLACE CONCRETE COPING DETAIL

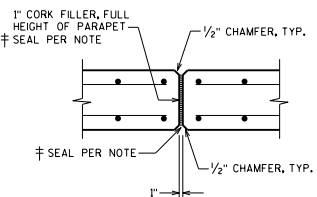
DESIGNER NOTE: CONCRETE COPING DESIGNED FOR STANDARD PEDESTRIAN RAILING WITH 10 FT MAXIMUM POST SPACING PER LRFD 13.8.2.



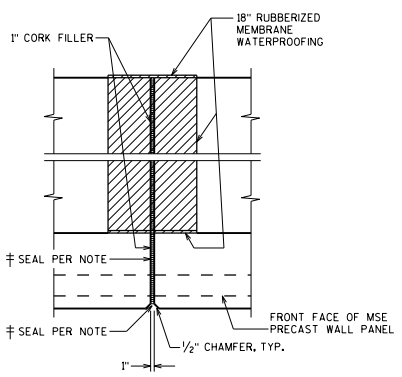
COPING EXPANSION JOINT

DO NOT RUN BAR STEEL THRU JOINT. MAX. SPACING OF JOINT = 5'

MEMBRANE WATERPROOFING TO EXTEND FROM TOP OF COPING TO 6" BELOW TOP OF PANELS.

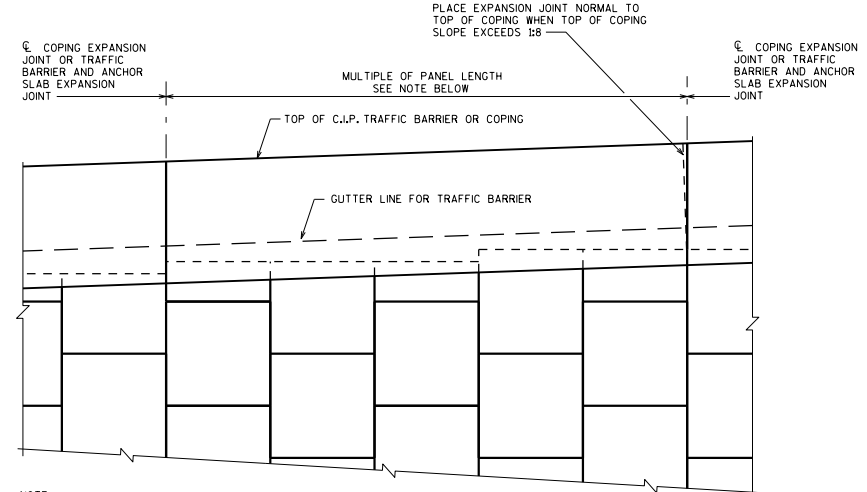


TRAFFIC BARRIER EXPANSION JOINT DETAIL



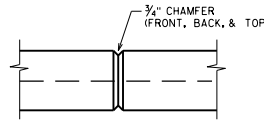
ANCHOR SLAB EXPANSION JOINT DETAIL

EXPANSION JOINTS TO BE SPACED AT A MINIMUM OF 20' AND A MAXIMUM OF 30'. LOCATE EXPANSION JOINTS OVER WALL JOINTS. DO NOT RUN BAR STEEL THRU JOINT, EXCEPT FOR DOWEL BARS. JOINT TO EXTEND FULL DEPTH OF PARAPET AND ANCHOR SLAB. PROVIDE THE NUMBER OF BARS AND OVERALL LENGTH FOR QUANTITY PURPOSES, ONLY. DO NOT DETAIL SPECIFIC BAR LENGTHS BETWEEN EXPANSION JOINTS AS THESE LENGTHS ARE BASED ON UNKNOWN MSE PANEL LENGTH AND CONFIGURATION.



C.I.P. TRAFFIC BARRIER OR COPING PARTIAL ELEVATION

NOTE: ALL JOINTS SHALL BE LOCATED AS SHOWN ON WALL ELEVATIONS AND MUST COINCIDE WITH PANEL JOINT ON FRONT FACE.



COPING CONTRACTION JOINT

DO NOT RUN BAR STEEL THRU JOINT. MAX. SPACING OF JOINT = 12'

DESIGNER NOTES

MODIFIED ANCHOR SLAB DETAILS SHALL SATISFY AASHTO LRFD STRENGTH AND STABILITY REQUIREMENTS.

PROVIDE CONCRETE, REINFORCEMENT, AND RUBBERIZED MEMBRANE WATERPROOFING QUANTITIES FOR TRAFFIC BARRIERS; PROVIDE BILL OF BARS.

FOR STANDARD COPING, AS SHOWN ON THIS SHEET, SHOW BAR SIZE AND BAR SPACING, ONLY. DO NOT PROVIDE BILL OF BARS, CONCRETE, REINFORCEMENT, AND RUBBERIZED MEMBRANE WATERPROOFING ARE INCLUDED IN BID ITEM FOR THE MSE WALL.

MSE RETAINING WALL DETAILS



APPROVED: *Laura Shadewald* DATE: 7-20