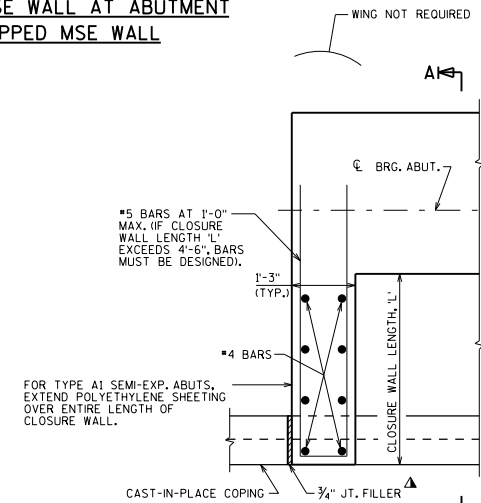
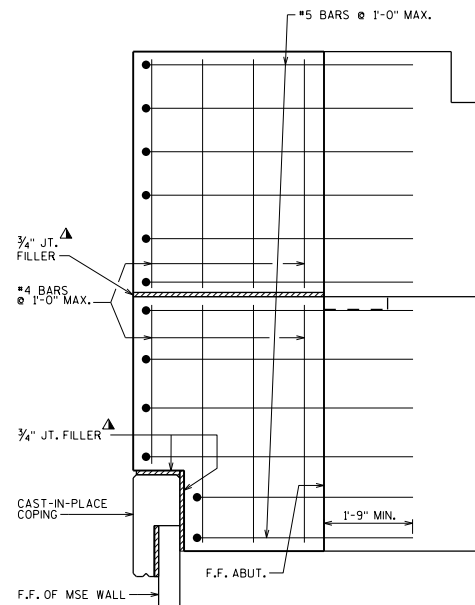
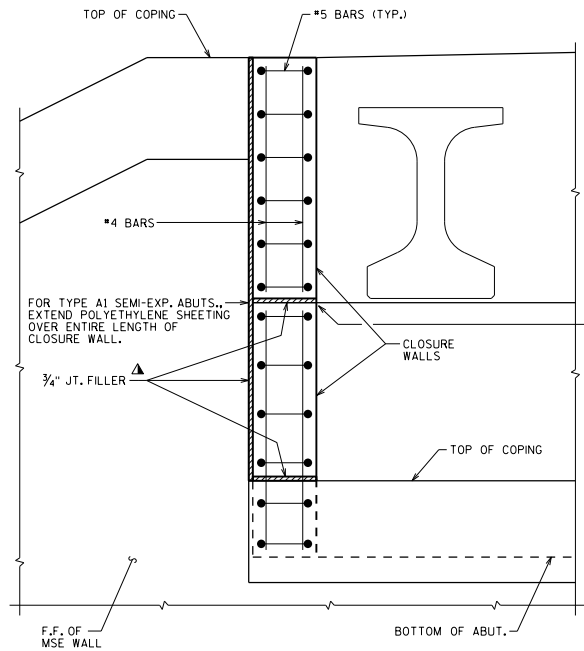
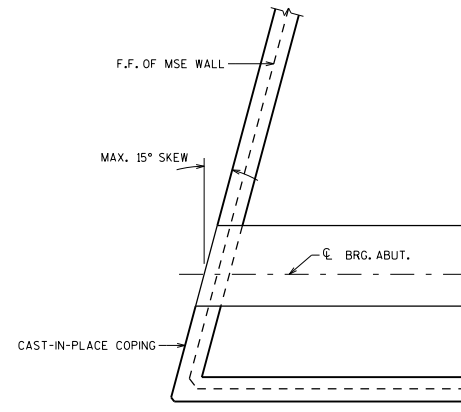
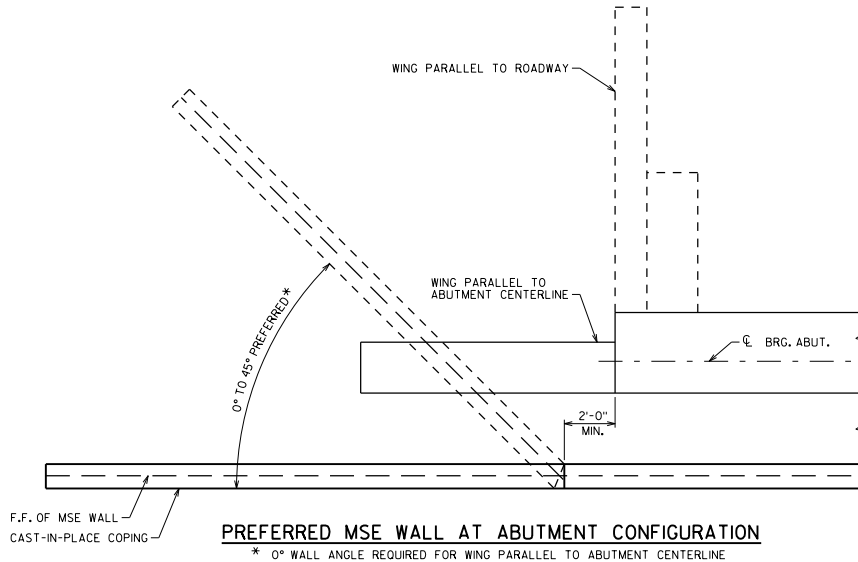


**DESIGNER NOTES**

THE "PREFERRED MSE WALL AT ABUTMENT CONFIGURATION" IS THE DESIRED OPTION AS IT SEPARATES THE MSE WALL FROM THE ABUTMENT, MINIMIZING COMPLICATED DETAILS AND POTENTIAL SETTLEMENT ISSUES. THIS ADVICE IS MORE RELEVANT AS SKEW INCREASES.


**NOTES**

▲ SEAL ALL EXPOSED HORIZONTAL AND VERTICAL SURFACES OF FILLER WITH NON-STAINING GRAY, NON-BITUMINOUS JOINT SEALER. (1" DEEP AND HOLD 1/8" BELOW SURFACE OF CONCRETE).



**PLAN VIEW OF ALTERNATE MSE WALL AT ABUTMENT WITH CLOSURE WALL**

ABUT. TYPE A1 SHOWN. EXPANSION ABUT. WOULD REQUIRE CLOSURE WALL GOING TO BACKWALL WITH BENT BARS TO ACHIEVE DEVELOPMENT.

|   |                             |
|---|-----------------------------|
| MSE WALL AT ABUTMENT LAYOUT DETAILS   |                             |
|  | <b>BUREAU OF STRUCTURES</b> |
| APPROVED: <i>Laura Shadewald</i>  | DATE: 7-17                  |