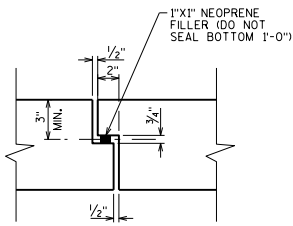
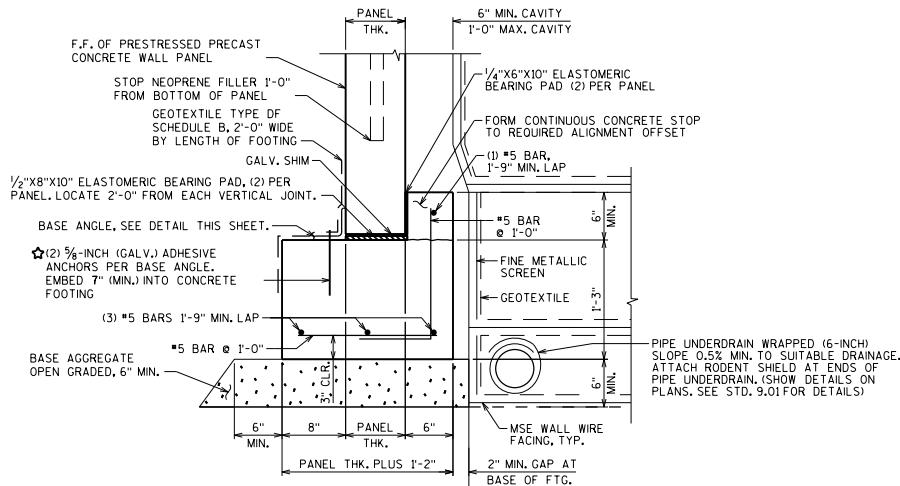


BASE ANGLE DETAIL

CENTERED ON PANEL JOINT OR AT EACH FOOTING END OR STEP ELEVATION.



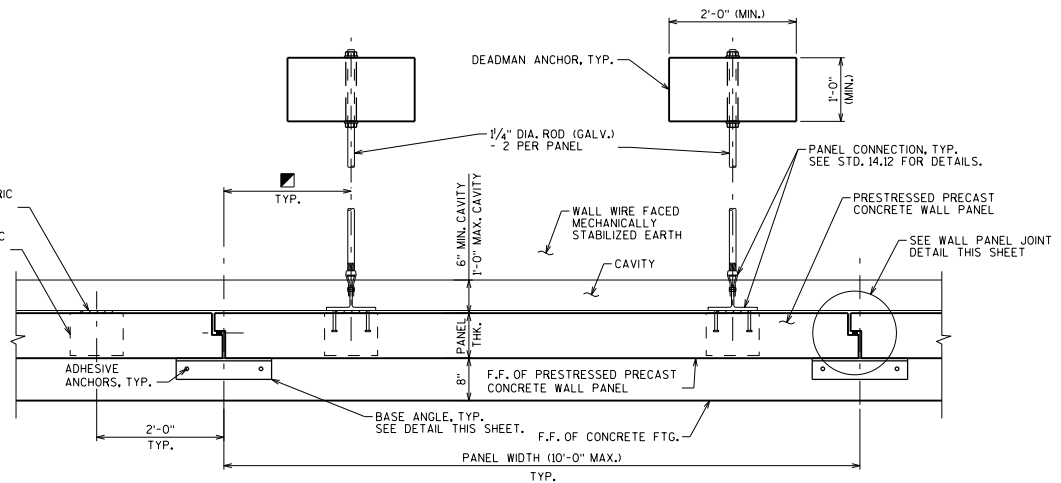
WALL PANEL JOINT DETAIL



ALL ITEMS SHOWN ARE INCLUDED IN BID ITEM "PRESTRESSED PRECAST CONCRETE WALL PANEL"
 ALL ITEMS SHOWN EXCEPT PIPE UNDERDRAIN ARE INCLUDED IN BID ITEM "WALL WIRE FACED MECHANICALLY STABILIZED EARTH"

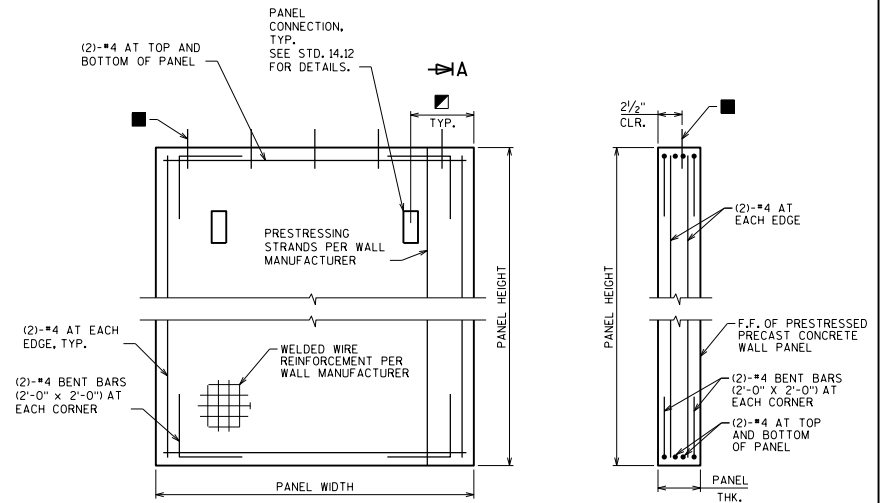
WALL PANEL FOOTING DETAIL

☆ ADHESIVE ANCHORS SHALL CONFORM TO SECTION 502.2.12 OF THE STANDARD SPECIFICATIONS.



TYPICAL WALL PANEL CONNECTION - PLAN VIEW

ALL ITEMS SHOWN ARE INCLUDED IN BID ITEM "PRESTRESSED PRECAST CONCRETE WALL PANEL".



ELEVATION PRESTRESSED PRECAST CONCRETE WALL PANEL

DO NOT PROVIDE BILL OF BARS, BAR STEEL REINF. AND CONCRETE ARE INCLUDED IN BID ITEM "PRESTRESSED PRECAST CONCRETE WALL PANEL."

PRECAST PANELS 6 FEET OR LESS IN HEIGHT DO NOT REQUIRE PRESTRESSING STRANDS.

SECTION A-A

PRESTRESSING STRANDS NOT SHOWN FOR CLARITY.

DESIGNER NOTE

■ DOWELS REQUIRED FOR CAST-IN-PLACE CONCRETE COPING ONLY. IF CAST-IN-PLACE CONCRETE COPING PROPOSED, INCLUDE THE FOLLOWING NOTE:

#4 DOWELS, 1-3" LONG AT 2'-0" MAX. SPACING ALTERNATE ANCHORAGE: 1/2" DIA. ELECTROPLATED FERRULE LOOP INSERT (MEDIUM HIGH CARBON WIRE) OR APPROVED EQUAL.

LEGEND

■ USE 2'-0" ON 10'-0" PANELS
 ■ USE 1'-0" ON PANELS LESS THAN 10'-0".

MSE WALL WIRE FACING 2



APPROVED: *Laura Shadewald* DATE: 7-18