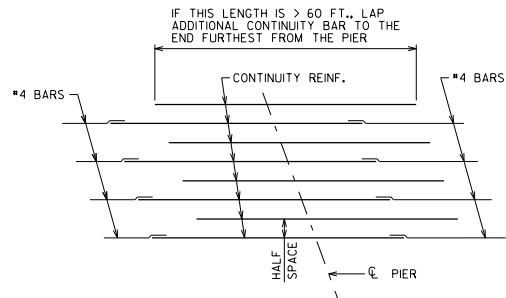


PLAN VIEW OF DECK CONTINUITY REINFORCEMENT FOR PRESTRESSED GIRDER BRIDGES
(SHOWING TYPICAL BAR SPACING FROM CHAPTER 17 TABLES)



PLAN VIEW OF DECK CONTINUITY REINFORCEMENT FOR PRESTRESSED GIRDER BRIDGES SHOWING HALF-SPACES
(SHOWING TYPICAL BAR SPACING FROM CHAPTER 17 TABLES + HALF-SPACE)

LONGITUDINAL CONSTRUCTION JOINT DETAIL

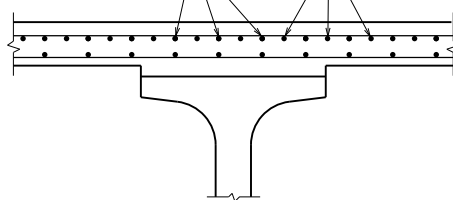
SEE STD. 24.11 FOR GIRDER SUPERSTRUCTURES
SEE STD. 18.02 FOR SLAB SUPERSTRUCTURES

DESIGNER NOTES

DETAIL REQUIRED WHEN WIDTH OF DECK EXCEEDS 90 FEET FOR GIRDER SUPERSTRUCTURES AND 52 FEET FOR SLAB SUPERSTRUCTURES. DETAIL SHOULD BE USED FOR STAGED CONSTRUCTION AND FOR OTHER COLD JOINT APPLICATIONS WITHIN THE DECK. OPTIONAL (CONTRACTOR) JOINTS ARE TO BE APPROVED BY THE ENGINEER.

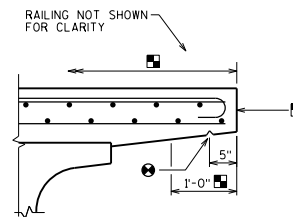
JOINTS SHOULD BE PLACED AT LEAST 6 INCHES FROM THE EDGE OF THE TOP FLANGE OF THE GIRDER AND PREFERABLY LOCATED BENEATH THE MEDIAN OR PARAPET. AVOID PLACING NEAR WHEEL PATHS (PLACE AT LANE LINES OR IN THE MIDDLE OF THE LANE).

ADDITIONAL CONTINUITY REINF. AT HALF-SPACES. ONLY USED FOR PRESTRESSED GIRDER BRIDGES (IF NECESSARY).
TYPICAL LOCATION OF CONTINUITY REINF.



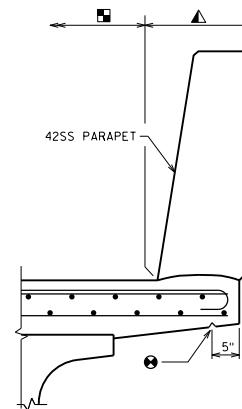
CROSS SECTION THRU DECK

(SHOWING TOP LONGIT. REINF. LOCATION RELATIVE TO BOTTOM LONGIT. REINF.)



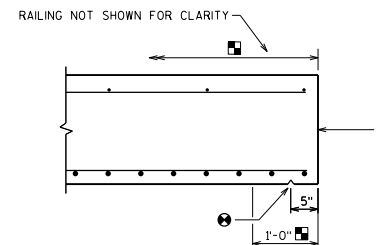
CROSS SECTION THRU EDGE OF DECK

(SHOWING DRIP GROOVE AND CONCRETE SEALING FOR OPEN RAILINGS)



CROSS SECTION THRU EDGE OF DECK

(SHOWING DRIP GROOVE AND CONCRETE SEALING FOR ALL PARAPETS)



CROSS SECTION THRU EDGE OF SLAB

(SHOWING DRIP GROOVE FOR ALL PARAPET AND RAILINGS, AND PROTECTIVE SURFACE TREATMENT FOR OPEN RAILINGS. FOR PARAPETS, PROTECTIVE SURFACE TREATMENT IS ONLY APPLIED GUTTERLINE TO GUTTERLINE)

DESIGNER NOTES

• 3/4" V-GROOVE REQ'D. EXTEND TO 2'-0" FROM F.F. OF ABUT. BODY (FOR ABUTMENTS WITH EXPANSION JOINTS)

• REFER TO STANDARD 40.01 FOR RESEALING CONCRETE SURFACES.

• DO NOT APPLY CONCRETE SEALER TO SURFACES TO BE STAINED OR OTHER

• BID ITEM "PROTECTIVE SURFACE TREATMENT":

• APPLY TO DECK AND CONCRETE OVERLAY SURFACES.

• FOR OPEN RAILINGS, APPLY TO THE TOP AND EXTERIOR EXPOSED FACE OF WINGS, AND THE END 1'-0" OF THE FRONT FACE OF ABUTMENT.

• APPLY TO THE VERTICAL AND HORIZONTAL SURFACES OF SIDEWALKS, MEDIANS, AND PAVING NOTCHES.

• BID ITEM "PIGMENTED SURFACE SEALER":

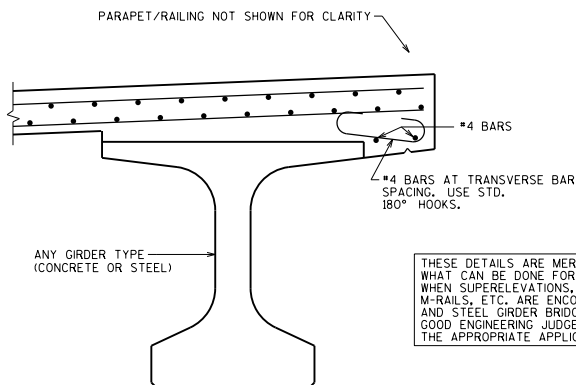
• APPLY TO INSIDE & TOP FACES OF PARAPETS, INCLUDING PARAPETS ON WINGS.

NOTES

• 3/4" V-GROOVE REQ'D. EXTEND TO 6" FROM F.F. OF ABUT. DIAPH. (FOR TYPE A1 FIXED AND SEMI-EXPANSION ABUTMENTS)

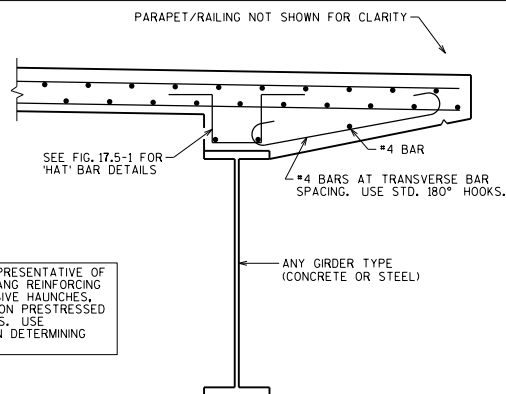
• PROTECTIVE SURFACE TREATMENT SHALL BE APPLIED TO THE (INSERT LOCATIONS).

• PIGMENTED SURFACE SEALER SHALL BE APPLIED TO THE (INSERT LOCATIONS).



CROSS SECTION THRU EDGE OF DECK

(SHOWING ADDITIONAL OVERHANG REINFORCEMENT)



CROSS SECTION THRU EDGE OF DECK

(SHOWING ADDITIONAL OVERHANG REINFORCEMENT)

THESE DETAILS ARE MERELY REPRESENTATIVE OF WHAT CAN BE DONE FOR OVERHANG REINFORCING WHEN SUPERELEVATIONS, EXCESSIVE HAUNCHES, M-RAILS, ETC. ARE ENCOUNTERED ON PRESTRESSED AND STEEL GIRDER BRIDGE DECKS. USE GOOD ENGINEERING JUDGEMENT IN DETERMINING THE APPROPRIATE APPLICATION.

SEE FIG. 17.5-1 FOR "HAT" BAR DETAILS

#4 BARS AT TRANSVERSE BAR SPACING. USE STD. 180° HOOKS.

ANY GIRDER TYPE (CONCRETE OR STEEL)

ANY GIRDER TYPE (CONCRETE OR STEEL)

DECK AND SLAB DETAILS

DATE: _____
APPROVED: *Laura Shadewald* 1-21