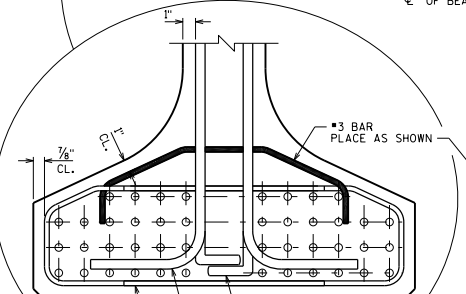


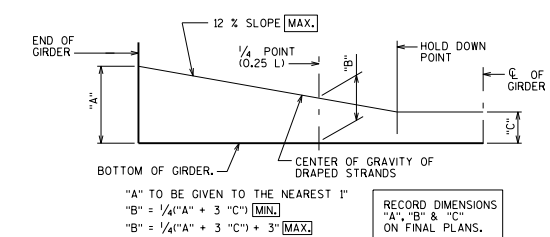
SECTION A-A



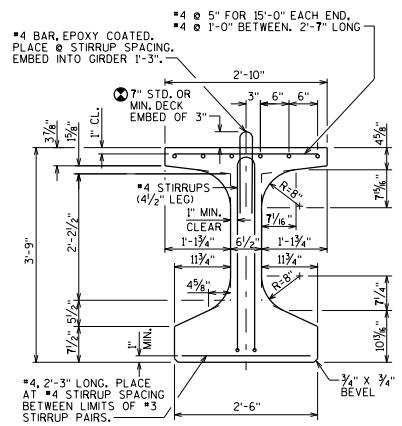
SUPPORT WITH STEEL OR ELASTOMERIC BRGS.



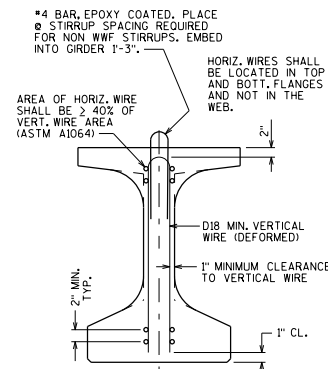
SUPPORT WITH 1/2\"/>



LOCATION OF DRAPED STRANDS



SECTION THRU GIRDER
STRANDS NOT SHOWN



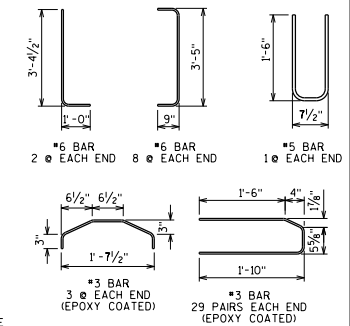
SECTION THRU GIRDER
SHOWING WELDED WIRE FABRIC (WWF) STIRRUPS
ASTM A1064 (FY = 70 KSI)

NOTES

- TOP OF GIRDER TO BE ROUGH FLOATED AND BROOMED TRANSVERSELY. EXCEPT THE OUTSIDE 8\"/>
- DO NOT APPLY CONCRETE SEALER OR EPOXY TO SURFACES RECEIVING APPLICATION OF CONCRETE STAINING.
- THE GIRDERS SHALL BE PROVIDED WITH A SUITABLE LIFTING DEVICE FOR HANDLING AND ERECTING THE GIRDERS. SEE SECTION 503.3.4 OF STANDARD SPECIFICATIONS FOR GUIDANCE.
- STRANDS SHALL BE FLUSH WITH END OF GIRDER. FOR GIRDER ENDS EMBEDDED COMPLETELY IN CONCRETE, END OF STRANDS SHALL BE COATED WITH NON-BITUMINOUS JOINT SEALER. FOR GIRDER ENDS THAT ARE FINALLY EXPOSED, COAT THE GIRDER ENDS, EXPOSED STRAND ENDS AND ALL NON-BONDING SURFACES WITHIN 2 FEET OF THE GIRDER ENDS WITH A NON-PIGMENTED EPOXY CONFORMING TO AASHTO M-235 TYPE II, GRADE 2, CLASS B OR C. THE EPOXY SHALL BE APPLIED AT LEAST 3 DAYS AFTER MOIST CURING HAS CEASED AND PRIOR TO THE APPLICATION OF THE SEALER.
- ALL GIRDERS SHALL BE CAST FULL LENGTH AS SHOWN.
- SPACING SHOWN FOR #4 STIRRUPS IS FOR GRADE 60 REINFORCEMENT.
- AN EQUIVALENT OF WELDED WIRE FABRIC (WWF) ASTM A1064 MAY BE SUBSTITUTED FOR THE STIRRUP REINFORCEMENT SHOWN, UPON APPROVAL OF THE STRUCTURES DESIGN SECTION. IF USED, WWF SUBSTITUTION DETAILS SHALL BE SUBMITTED ELECTRONICALLY TO THE WISDOT FABRICATION LIBRARY AND ACCEPTED PRIOR TO SHOP DRAWING SUBMITTAL.
- PRESTRESSING STRANDS SHALL BE 0.6\"/>

DESIGNER NOTES

- BID ITEM SHALL BE "PRESTRESSED GIRDER TYPE I 45W-INCH".
- SPECIFY CONCRETE STRENGTH AS REQUIRED BY DESIGN FROM A MINIMUM OF 6,000 PSI TO A MAX. OF 8,000 PSI. MAXIMUM RELEASE STRENGTH IS 6800 PSI. USE 0.6\"/>
- REINFORCEMENT IN STANDARD END SECTION OF THE GIRDER IS BASED ON THE STANDARD STRAND PATTERNS LISTED ON STANDARD 19.14 AND THE SPAN LENGTHS SHOWN IN TABLE 19.3-1. USING DIFFERENT STRAND PATTERNS OR LONGER SPANS WILL REQUIRE A COMPLETE DESIGN OF THIS REINFORCEMENT, WHICH REQUIRES PRIOR APPROVAL FROM THE BUREAU OF STRUCTURES.
- VARIES FOR ELASTOMERIC BRGS. (STD. 27.07) AND STEEL BRGS. (STD. 27.09)
- DETAIL TYPICAL AT EACH END
- THE DESIGN ENGINEER DETERMINES THIS VALUE BASED ON 2\"/>
- PROVIDE STIRRUP SPACING THAT IS SYMMETRICAL ABOUT THE C/L OF GIRDER.



45W\"/>

BUREAU OF STRUCTURES

APPROVED: *Laura Shadewald* DATE: 7-23