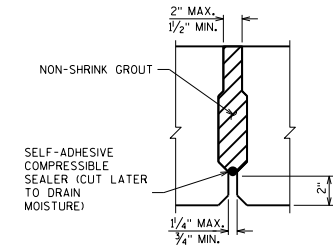


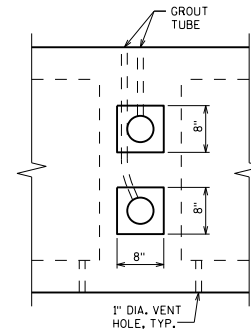
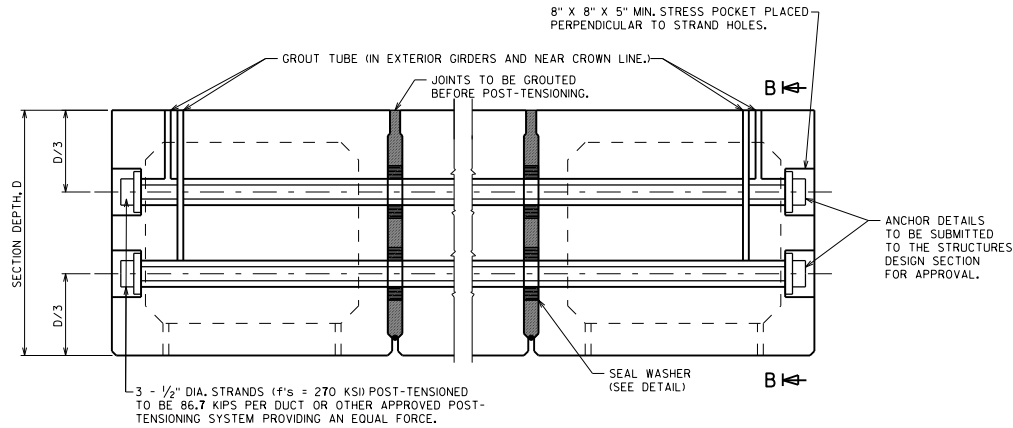
SECTION A-A



SHEAR KEY DETAIL

POST-TENSIONING DETAILS - ONE DUCT PER DIAPHRAGM

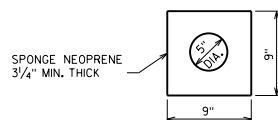
(SECTIONS 1 THROUGH 4)



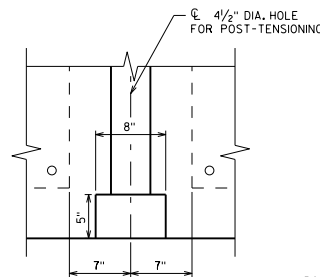
SECTION B-B

POST-TENSIONING DETAILS - TWO DUCTS PER DIAPHRAGM

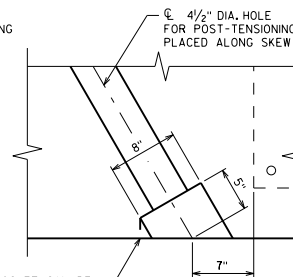
(SECTIONS 5 AND 6)



SEAL WASHER
(MAY ALSO BE ROUND)



NO SKEW



WITH SKEW

STRESS POCKET DETAIL

PRESTRESSED BOX
GIRDER DETAILS 3



**BUREAU OF
STRUCTURES**

APPROVED: *Laura Shadewald*

DATE:
1-18