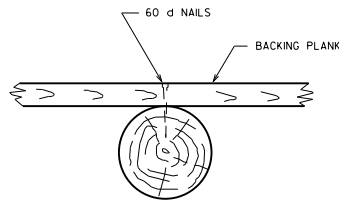
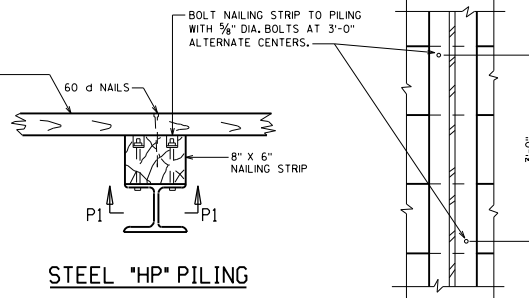


**CONCRETE
CAST-IN-PLACE PILING**

REFER TO STANDARD 11.01 FOR SECTION THRU REINFORCED CAST-IN-PLACE PILING WHEN PILES ARE EXPOSED.

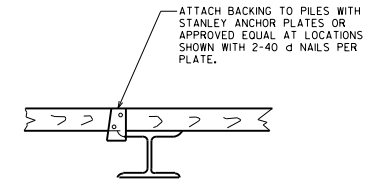


TIMBER PILING



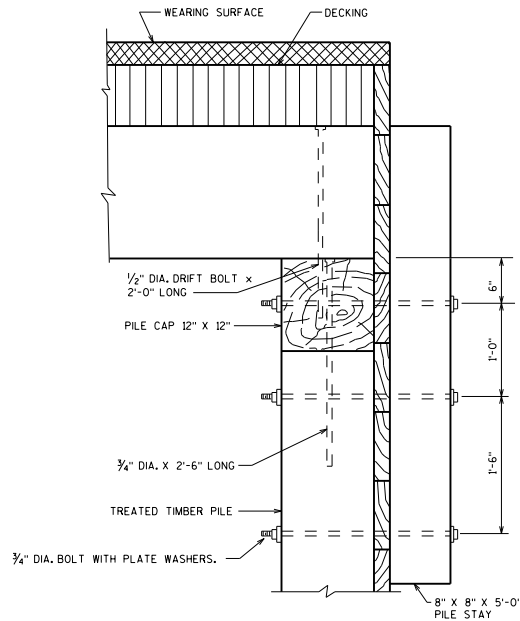
STEEL "HP" PILING

SECTION P1

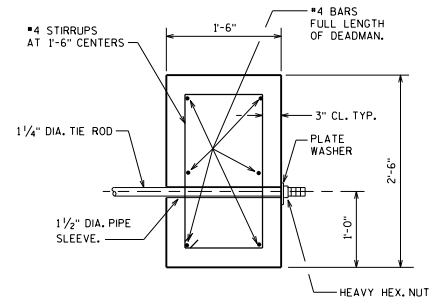


**STEEL "HP" PILING
(ALTERNATE ATTACHMENT)**

BODY & WING PLANK CONNECTION DETAILS



**PILE CAP DETAIL
(TIMBER GIRDER)**



SECTION THRU DEADMAN

TIMBER ABUTMENT DETAILS



APPROVED: *Laura Shadewald*

DATE:
7-16