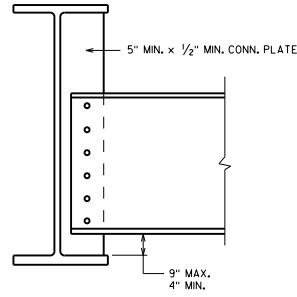


36" W. GIRDER



33" W. GIRDER

INTERMEDIATE DIAPHRAGM SIZES

ALL INTERMEDIATE CONNECTIONS	
GIRDER DEPTH	INTERMEDIATE DIAPHRAGMS
36"	MC18 X 42.7
33"	MC18 X 42.7
30"	C15 X 33.9
27"	C15 X 33.9
24"	C12 X 20.7
21"	C10 X 15.3
18"	C8 X 11.5

NOTES

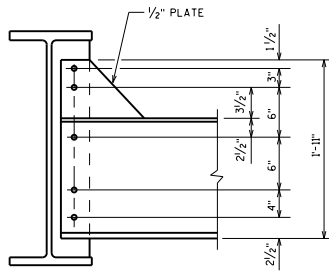
DIAPHRAGMS SHALL BE HORIZONTAL EXCEPT WHEN THE DIFFERENCE IN ADJACENT GIRDER ELEVATIONS IS OF A MAGNITUDE THAT NECESSITATES SLOPING THE DIAPHRAGMS.

WHEN DIAPHRAGMS ARE SLOPED, PLACE CENTER OF DIAPHRAGM AT MID-DEPTH OF GIRDER.

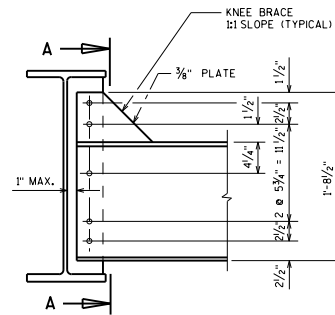
ALL BOLTED CONNECTIONS SHALL BE MADE WITH 3/4" ϕ HIGH STRENGTH ASTM A325 BOLTS.

DESIGNER NOTES

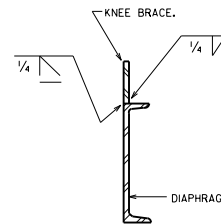
SEE STANDARD 24.02 FOR CONNECTION BAR CORNER COPE & WELD DETAILS.



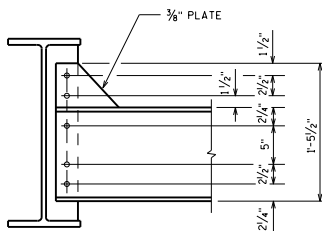
30" W. GIRDER



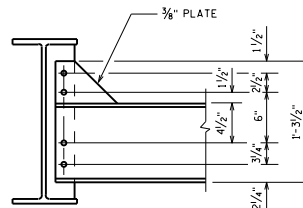
27" W. GIRDER



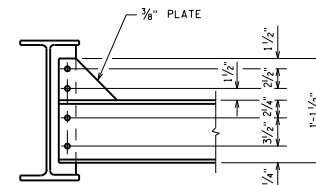
SECTION A



24" W. GIRDER



21" W. GIRDER



18" W. GIRDER

ROLLED GIRDER DIAPHRAGMS



APPROVED: *Laura Shadewald* DATE: 7-15