

IDEAL DECK POUR SEQUENCE
(CONTINUOUS STEEL GIRDER - 2 SPANS SHOWN)

② — INDICATES POUR NUMBER AND DIRECTION OF POUR

S = TOTAL NUMBER OF SPANS
L = LENGTH OF END SPAN

n = INTERIOR SPAN / END SPAN

NOTES

THE RATE OF PLACING CONCRETE SHALL EQUAL OR EXCEED 1/2 SPAN LENGTH PER HOUR BUT NEED NOT EXCEED 100 CU. YDS. PER HOUR. (REQUIRED ONLY FOR CONTINUOUS STEEL GIRDERS.)

IF OPTIONAL JOINTS ARE PROVIDED, TWO OR MORE SEQUENTIAL POURS MAY BE COMBINED AND PLACED IN ONE CONTINUOUS OPERATION. TWO OR MORE ALTERNATE DECK POURS (E.G. 1 & 3) MAY BE PLACED ON THE SAME DAY.

THE NEXT DECK POUR CAN BE MADE NO LESS THAN 72 HOURS AFTER THE PREVIOUS POUR.

THE CONTRACTOR MAY SUBMIT AN ALTERNATE POURING SEQUENCE SUBJECT TO THE APPROVAL OF THE STRUCTURES DESIGN SECTION. (NOTE: APPLICABLE WHEN OPTIONAL TRANSVERSE CONSTRUCTION JOINTS ARE SHOWN)

THE CONTRACTOR SHALL POUR THE ENTIRE DECK PER THE DECK POUR SEQUENCE IF REQUIRED TRANSVERSE CONSTRUCTION JOINTS ARE SHOWN ON THE PLANS. THE CONTRACTOR MAY SUBMIT AN ALTERNATE POURING SEQUENCE SUBJECT TO THE APPROVAL OF THE STRUCTURES DESIGN SECTION. (NOTE: REQUIRED WHEN REQUIRED TRANSVERSE CONSTRUCTION JOINTS ARE SHOWN)

DESIGNER NOTES

* THE DESIGNER SHALL DETERMINE IF TRANSVERSE JOINTS ARE OPTIONAL OR REQUIRED.

OPTIONAL TRANSVERSE CONSTRUCTION JOINTS SHALL BE DETAILED ON THE PLANS TO LIMIT THE VOLUME OF POUR TO < 600 CU. YDS. IN URBAN AREAS AND < 300 CU. YDS. IN OTHER AREAS. GENERALLY FOR STEEL GIRDER SUPERSTRUCTURES LOCATE THE TRANSVERSE JOINTS AT THE 0.6 POINT (CONCRETE IN 60% OF SPAN) AND FOR PRESTRESS GIRDER SUPERSTRUCTURES LOCATE JOINTS NEAR THE 0.75 POINT. (CONCRETE IN 75% OF SPAN) CONSIDER CUT-OFF POINTS OF CONTINUITY REINFORCING STEEL WHEN LOCATING JOINTS FOR PRESTRESS GIRDER SUPERSTRUCTURES. LOCATION OF JOINTS IN STEEL GIRDER SUPERSTRUCTURES MAY VARY IF DEFLECTIONS ARE INFLUENCED BY IN SPAN HINGES OR UNUSUAL SPAN LENGTH RATIOS. CHECK WITH THE STRUCTURES DEVELOPMENT SECTION FOR ADDITIONAL INFORMATION.

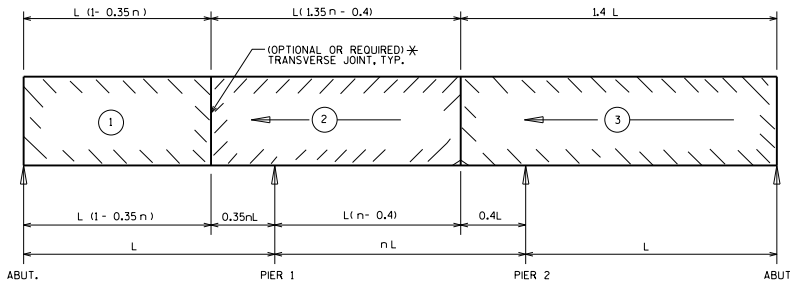
REQUIRED TRANSVERSE CONSTRUCTION JOINTS SHALL BE DETAILED ON THE PLANS ONLY WHEN REQUIRED BY DESIGN. SEQUENTIAL STAGES ARE DISCUSSED IN SECTION 24.12.2. ALL PLACEMENT REQUIREMENTS SHALL BE NOTED ON THE PLANS.

DETAIL TRANSVERSE CONSTRUCTION JOINTS 5'-0" FROM C_L OF IN SPAN HINGES, (ONE ON EACH SIDE OF HINGE) THE CONCRETE BETWEEN THESE JOINTS SHOULD BE THE LAST POUR PLACED.

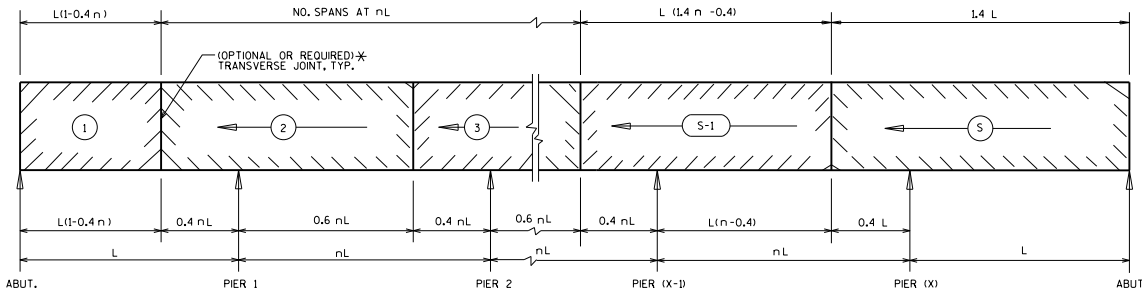
WHEN THE WIDTH OF THE DECK IS GREATER THAN 120 FEET, A LONGITUDINAL CONSTRUCTION JOINT SHALL BE DETAILED. FOR DECK WIDTHS BETWEEN 90 AND 120 FEET, AND OPTIONAL LONGITUDINAL JOINT SHALL BE DETAILED. LOCATE LONGITUDINAL CONSTRUCTION JOINT ALONG EDGE OF LANE LINE AND AT LEAST 6 INCHES FROM EDGE OF TOP FLANGE OF GIRDER.

FOR GRADES OVER 3% THE PREFERRED DIRECTION OF POUR IS UPHILL.

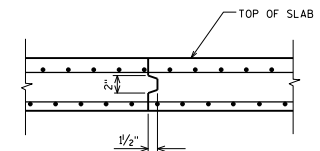
AN ALTERNATE POURING SEQUENCE IS TO POUR THE DL POSITIVE MOMENT AREAS AND THEN THE DL NEGATIVE MOMENT AREAS. THE SEQUENCE MAY BE STARTED ANYWHERE ON THE BRIDGE.



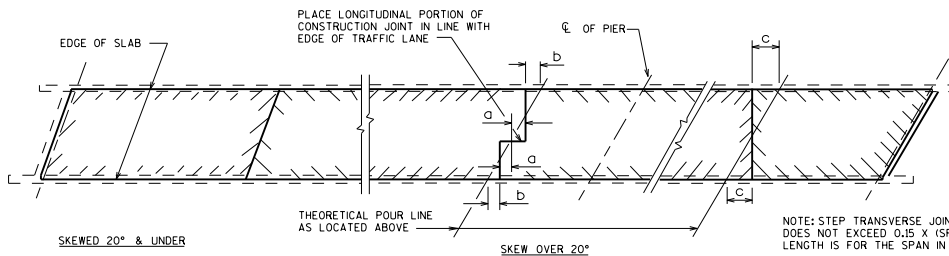
IDEAL DECK POUR SEQUENCE
(CONTINUOUS STEEL GIRDER - 3 SPANS SHOWN)



IDEAL DECK POUR SEQUENCE
(CONTINUOUS STEEL GIRDER - ANY NUMBER OF SPANS SHOWN)



SECTION THRU TRANSVERSE OR LONGITUDINAL JOINT



PLAN VIEW - SHOWING PLACEMENT OF TRANSVERSE CONSTRUCTION JOINTS

NOTE: STEP TRANSVERSE JOINT SO THAT "a", "b" or "c" DOES NOT EXCEED 0.15 X (SPAN LENGTH), WHERE SPAN LENGTH IS FOR THE SPAN IN WHICH THE JOINT IS PLACED

SLAB POURING SEQUENCE	
	BUREAU OF STRUCTURES
APPROVED: <i>Laura Shadewald</i>	DATE: 7-19