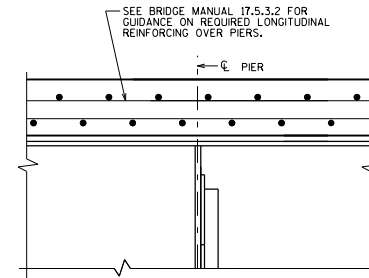
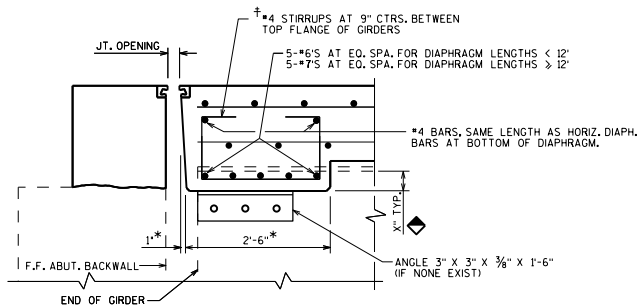


**SECTION THRU EXPANSION END**

DIAPHRAGM TO EXTEND TO GIRDER WEB  
(SEE PART TRANSVERSE SECTION AT DIAPHRAGM  
EXPANSION END FOR TYPICAL EXTENTS)

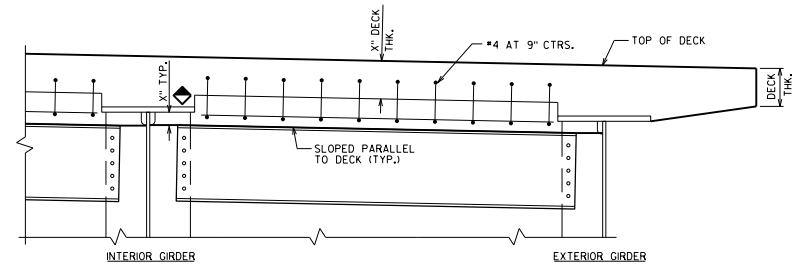


**SECTION AT PIER**



**SECTION THRU EXPANSION END OF NEW DECK  
SHOWING EXISTING STEEL GIRDER  
WITHOUT EXISTING STEEL DIAPHRAGM**

(SEE STD. 40.04 FOR ADDITIONAL DETAILS)



**PART TRANSVERSE SECTION AT DIAPHRAGM  
EXPANSION END**

**NOTES**

FOR REHABILITATION PROJECTS:

DIAPHRAGM SUPPORT ANGLES SHALL BE ASTM A709 GRADE 36.  
BOLTS ARE 3/4" DIA. ALL BOLTS, NUTS AND WASHERS SHALL BE  
ASTM A325 TYPE 1.

ALL SUPPORT ANGLES SHALL BE HOT-DIPPED GALVANIZED.  
ALL BOLTS, NUTS AND WASHERS SHALL BE HOT-DIPPED GALVANIZED  
IN ACCORDANCE WITH ASTM A153 CLASS C. GALVANIZED NUTS SHALL  
BE TAPPED OVERSIZED IN ACCORDANCE WITH THE REQUIREMENTS OF  
ASTM A563 AND SHALL MEET THE REQUIREMENTS OF SUPPLEMENTARY  
REQUIREMENT S1 OF ASTM A563, LUBRICANT AND TEST FOR COATED NUTS.

ALL DIAPHRAGM SUPPORT HARDWARE SHALL BE INCIDENTAL TO  
"CONCRETE MASONRY BRIDGES".

ALL REPLACEMENT PAVING BLOCK DIMENSIONS SHALL MATCH EXISTING  
PLAN DIMENSIONS UNLESS DESIGNER DETERMINES OTHERWISE.

**DESIGNER NOTE**

◆ 3" MINIMUM, USE 3" UNLESS INCREASED TO ACCOMMODATE LARGE EXPANSION DEVICES.

**LEGEND**

† BARS PLACED PARALLEL TO GIRDERS.  
SPACING PERPENDICULAR TO  $\bar{C}$  GIRDERS.

\* DIMENSION IS TAKEN NORMAL TO  $\bar{C}$  ABUTMENT

**STEEL GIRDER SLAB &  
SUPERSTRUCTURE DETAILS**



**BUREAU OF  
STRUCTURES**

APPROVED: *Laura Shadewald*

DATE:  
1-18