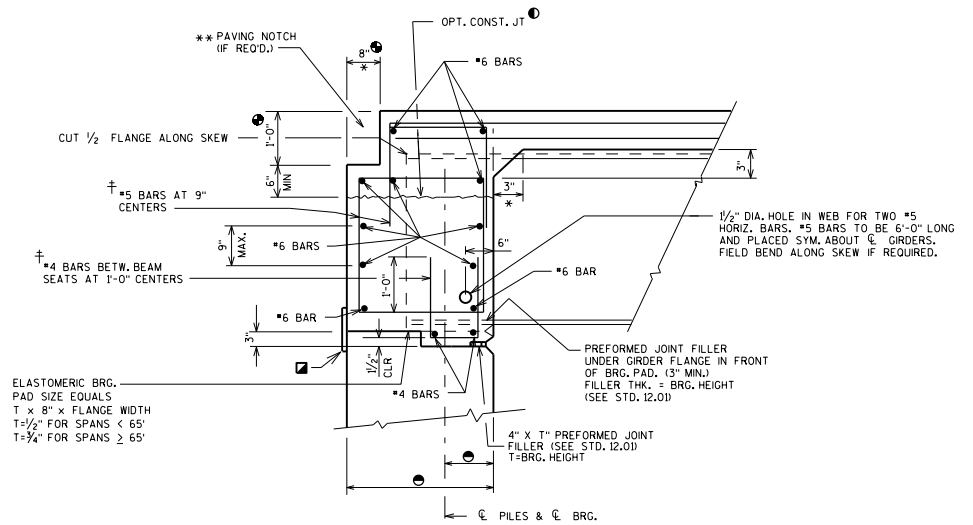
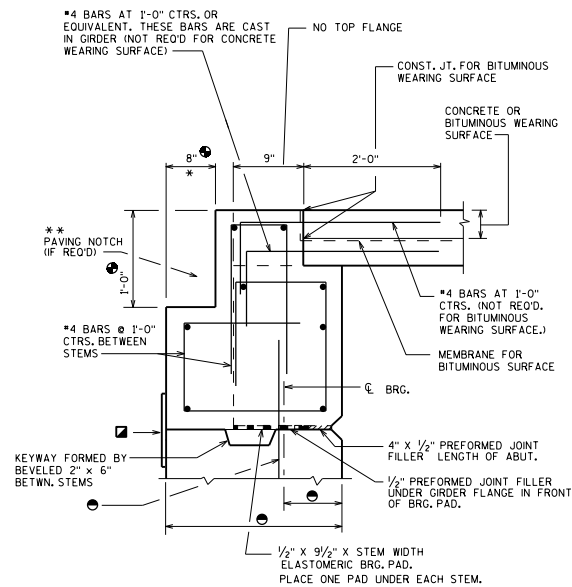


**STEEL GIRDER WITH
FIXED SEAT**



**STEEL GIRDER WITH
SEMI-EXPANSION SEAT**



**PRECAST DOUBLE TEE OR
MULTI-STEM SECTION**

NOTES

FOR SKEWED STRUCTURES CAST END OF PRECAST TEE ALONG SKEW.

* DIMENSION IS TAKEN NORMAL TO ϕ SUBSTRUCTURE UNITS.

▣ 1'-6" RUBBERIZED MEMBRANE WATERPROOFING

† BARS PLACED PARALLEL TO GIRDERS. SPACING PERPENDICULAR TO ϕ GIRDERS.

DESIGNER NOTES

SEE STANDARD 19.55 FOR PRESTRESSED BOX GIRDER BEARING DETAILS.

① THE USE OF THIS OPT. CONST. JOINT IS NOT RECOMMENDED FOR SKEWS OVER 15° WHEN LARGE DEADLOAD END ROTATION IS ANTICIPATED.

** USE PAVING NOTCH ON ALL U.S.H. BRIDGES, S.T.H. BRIDGES, I.H. BRIDGES & ON C.T.H. BRIDGES WITH CONCRETE APPROACHES.

② PAVING NOTCH IS 1'-0" WIDE BY 1'-4" DEEP IF STRUCTURAL APPROACH SLAB (STD. 12.10) IS USED.

③ SEE STD. 12.01

**BRG. DETAILS FOR STEEL
GDRS. AND PRECAST
UNITS ON A1 ABUTMENTS**



**BUREAU OF
STRUCTURES**

APPROVED: *Laura Shadewald* DATE: 7-18