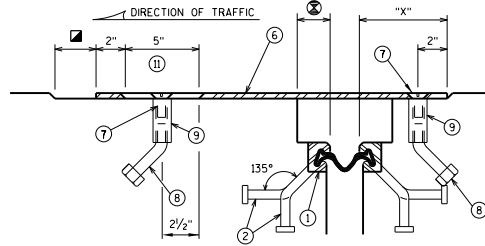
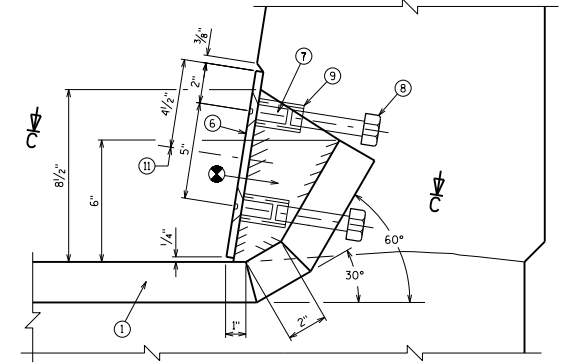


**PLAN AT PARAPET**  
SINGLE SLOPE PARAPET

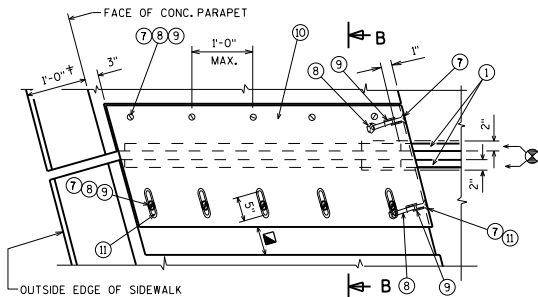


**SECTION C-C**



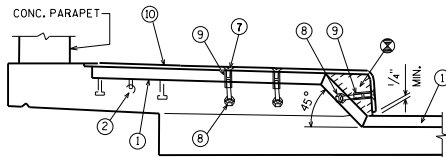
**SECTION A-A**  
SINGLE SLOPE PARAPET

"X" - VALUES IN INCHES		USE "X" = 6 1/2" FOR 0° SKEW											
SKEW	5°	10°	15°	20°	25°	30°	35°	40°	45°	50°	55°	60°	65°
RHF	6 1/2	6 1/2	6 1/2	6 1/2	6 1/2	6 1/2	6 1/2	6 1/2	6 1/2	7	7	7 1/2	8
LHF	7	7 1/2	8	8 1/2	9	9 1/2	10 1/2	11	11 1/2	13	13 1/2	14 1/2	15 1/2

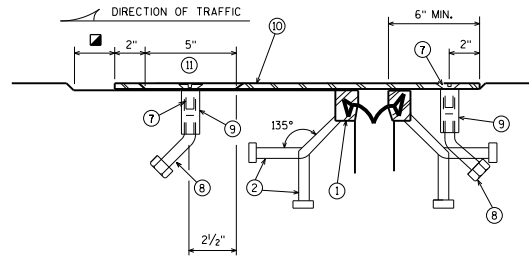


**PLAN AT SIDEWALK**

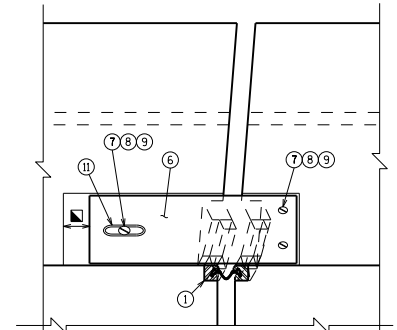
† 1'-2" WHEN "VERTICAL FACE PARAPET TYPE 'TX' IS USED



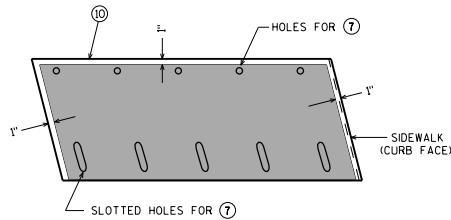
**SECTION AT SIDEWALK**



**SECTION B-B**



**VIEW OF PARAPET PLATES**  
FROM ROADWAY  
SINGLE SLOPE PARAPET



**PLAN OF SIDEWALK COVER PLATE**  
WITH SLIP-RESISTANT SURFACE

PLACE SLIP-RESISTANT SURFACE ON TOP WALKING SURFACE IN SHADED AREA ONLY (NOT ON CURB FACE).

**DESIGNER NOTES**

FOR NEW BRIDGES, JOINT TO BE DETAILED STRAIGHT.

FOR JOINT REPLACEMENT PROJECTS, JOINT SHALL BE DETAILED TO MATCH ORIGINAL CONFIGURATION (STRAIGHT OR KINKED) IN ORDER TO REDUCE SUBSTRUCTURE MODIFICATIONS REQUIRED.

PLAN DETAILS SHALL REMOVE ENOUGH PARAPET Laterally, AND FULL HEIGHT, TO ENSURE DURABILITY OF THE JOINT REPLACEMENT.

- ⊗ BLOCK OUT CONCRETE 2" EACH SIDE OF JOINT OPENING
- ⊠ JOINT OPENING DIM. ALONG SKEW PLUS 1/2"

APPROVED SLIP-RESISTANT APPLIED SURFACES FOR STEEL PLATES		
PRODUCT	MANUFACTURER	CONTACT AT
SLIPNOT GRADE 2, STEEL	W. S. MOLNAR COMPANY	1-800-SLIPNOT
ALGRIP, STEEL	ROSS TECHNOLOGY CORP.	1-800-345-8170

**STRIP SEAL COVER PLATES**  
SINGLE SLOPE PARA./SDWK.



APPROVED: *Laura Shadewald* DATE: 7-19