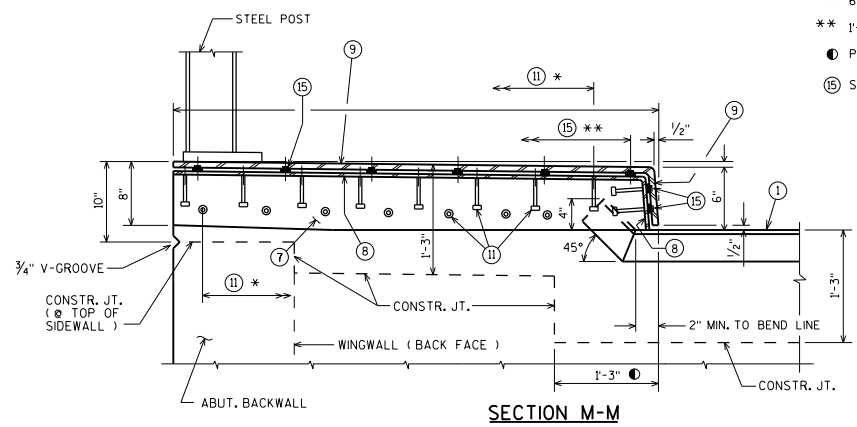
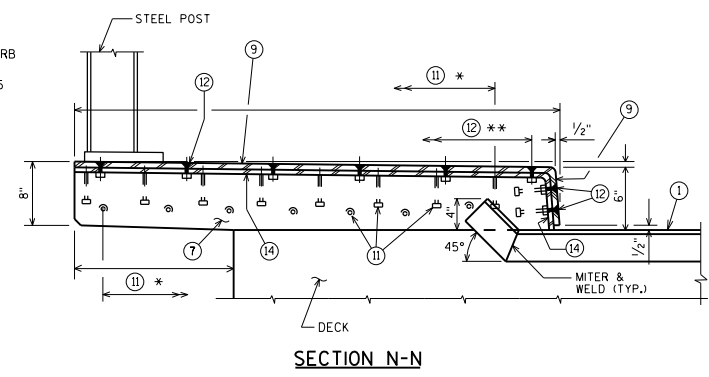


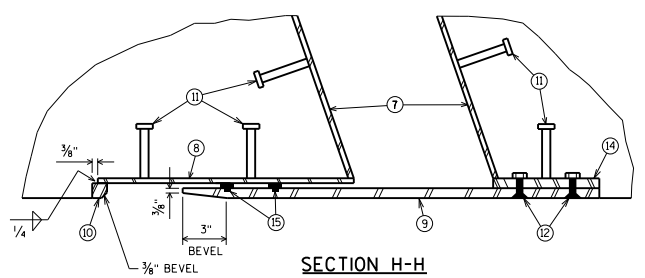
- * 6" MAX. SPA.
- ** 1'-0" MAX. SPA.
- ① PERPENDICULAR TO FACE OF CURB
- ⑮ SEE DETAIL ON STANDARD 28.05



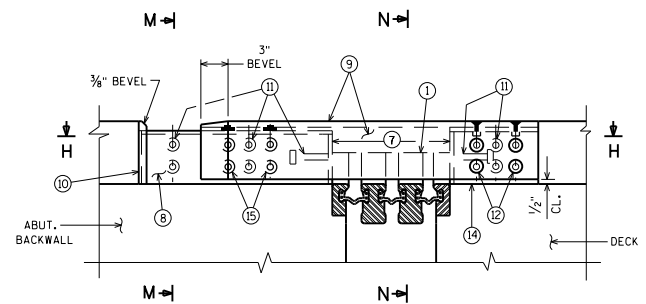
SECTION M-M



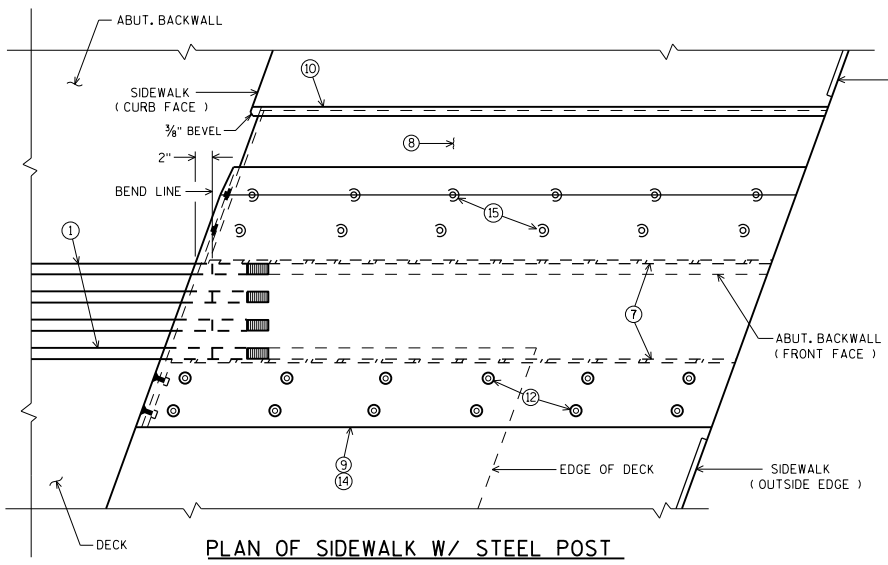
SECTION N-N



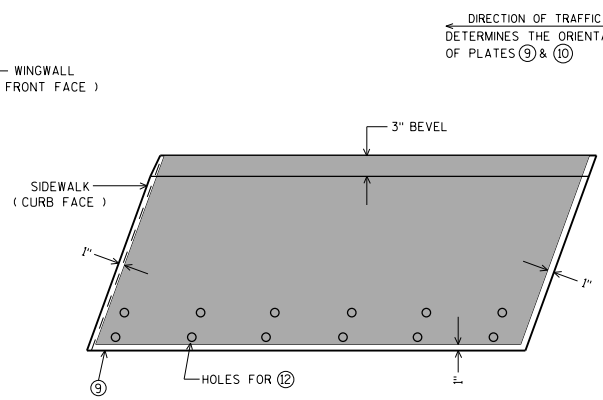
SECTION H-H



ELEVATION OF SIDEWALK W/ STEEL POST



PLAN OF SIDEWALK W/ STEEL POST



PLAN OF SIDEWALK COVER PLATE WITH SLIP-RESISTANT SURFACE

DIRECTION OF TRAFFIC
DETERMINES THE ORIENTATION
OF PLATES ⑨ & ⑩

PLACE SLIP-RESISTANT SURFACE ON TOP WALKING SURFACE IN SHADED AREA ONLY (NOT ON CURB FACE). GALVANIZE PLATE AFTER SLIP-RESISTANT SURFACE IS APPLIED.

APPROVED SLIP-RESISTANT APPLIED SURFACES FOR STEEL PLATES		
PRODUCT	MANUFACTURER	CONTACT AT
SLIPNOT GRADE 2, STEEL	W. S. MOLNAR COMPANY	1-800-SLIPNOT
ALGRIP, STEEL	ROSS TECHNOLOGY CORP.	1-800-345-8170

COVER PLATES FOR SIDEWALK W/ STEEL RAIL

BUREAU OF STRUCTURES

APPROVED: *Laura Shadewald*

DATE: 7-11