

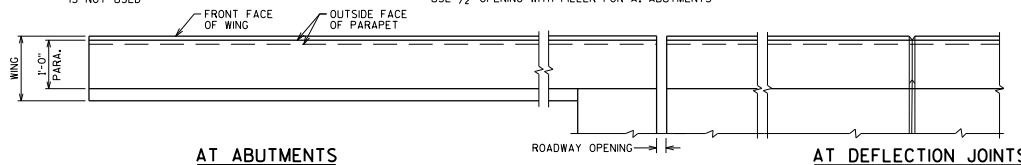
AT ABUTMENTS

ELEVATION OF PARAPET

AT DEFLECTION JOINTS

⊕ EXTEND 3/4" GROOVE TO END OF PARAPET WHEN ANCHOR ASSEMBLY IS NOT USED.

⊕ ROADWAY OPENING OR 2/4" MIN. FOR EXPANSION JOINT. USE 1/2" OPENING WITH FILLER FOR AT ABUTMENTS.

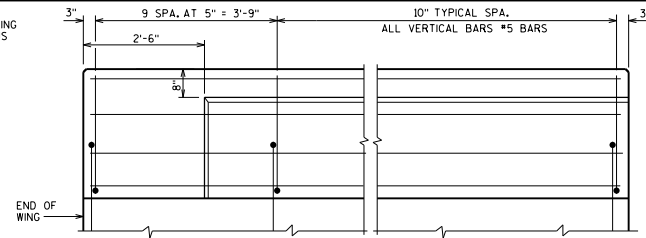


AT ABUTMENTS

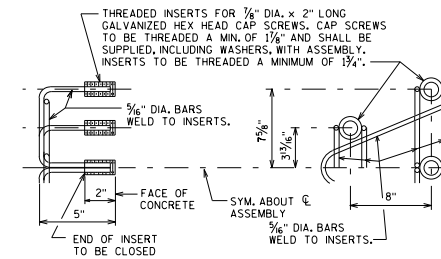
AT DEFLECTION JOINTS

PLAN OF PARAPET
(RAILING NOT SHOWN FOR CLARITY)

FILL WITH NON-STAINING GRAY NON-BITUMINOUS JOINT SEALER.



VIEW SHOWING OUTSIDE FACE OF PARAPET & REINF.



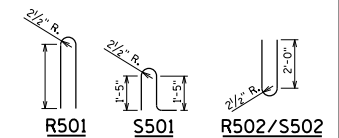
DETAIL OF ANCHOR ASSEMBLY

NOTE: HEX. HEAD CAP SCREWS & WASHERS TO BE GALVANIZED IN ACCORDANCE WITH ASTM F2329.

ASSEMBLY BID ITEM SHALL BE "ANCHOR ASSEMBLIES FOR STEEL PLATE BEAM GUARD", EACH.

BILL OF BARS

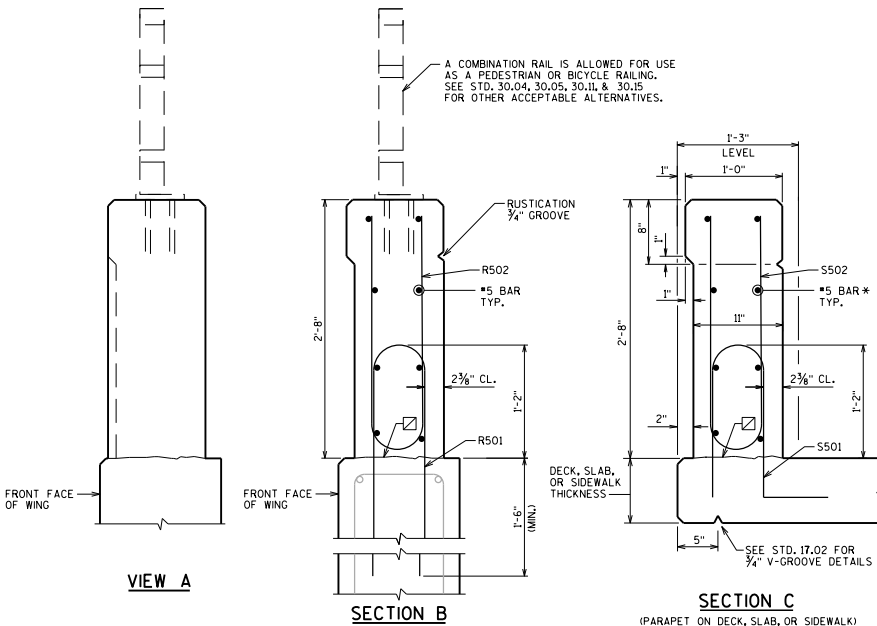
BAR MARK	CON.	NO. REQ'D.	LENGTH	REV.	BAR SERIES	LOCATION
R501	X			X		PARAPET VERT.
R502	X		4'-9"	X		PARAPET VERT.
S501	X		4'-4"	X		PARAPET VERT.
S502	X		4'-9"	X		PARAPET VERT.



R501

S501

R502/S502



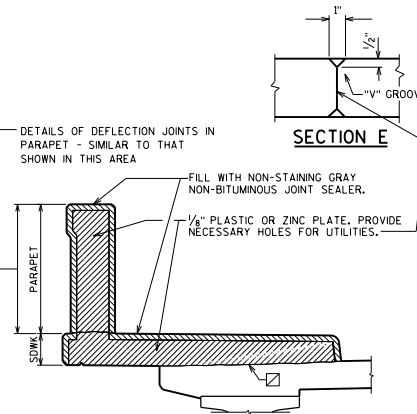
VIEW A

SECTION B

SECTION C

(PARAPET ON DECK, SLAB, OR SIDEWALK)
(RAILING NOT SHOWN FOR CLARITY)

A COMBINATION RAIL IS ALLOWED FOR USE AS A PEDESTRIAN OR BICYCLE RAILING. SEE STD. 30.04, 30.05, 30.11 & 30.15 FOR OTHER ACCEPTABLE ALTERNATIVES.



SECTION E

SECTION D

SHOWING DEFLECTION JOINT IN PARAPET OR SIDEWALK USING THE FOLLOWING CRITERIA:
 1. GIRDER STRUCTURES AND SLAB STRUCTURES WITH A SIDEWALK SHOULD HAVE A DEFLECTION JOINT IN THE SIDEWALK AND PARAPET OVER THE PIER.
 IF THERE IS A LIGHT STANDARD AT THE PIER, PLACE A DEFLECTION JOINT APPROX. 4'-0" EACH SIDE OF PIER, WITH NONE DIRECTLY OVER THE PIER.
 2. GIRDER STRUCTURES AND SLAB STRUCTURES WITHOUT SIDEWALKS SHOULD HAVE NO DEFLECTION JOINTS IN THE PARAPETS.

NOTE

WHEN PARAPETS ARE POURED CONTINUOUSLY FROM END TO END, THEY SHALL BE SEPARATED AT THE DEFLECTION JOINTS BY A PIECE OF 1/4" ZINC OR PLASTIC PLATE CUT AS SHOWN IN SECTION 'D' BY SHADED AREA. IF CONSTRUCTION JOINTS IN PARAPETS ARE USED AT THE DEFLECTION JOINTS, ONE SIDE OF JOINT SHALL BE COATED WITH AN APPROVED LIQUID BOND BREAKER AND PLATE SEPARATORS MAY BE OMITTED.

LEGEND

⊗ HORIZ. CONST. JOINT-STRIKE OFF AS SHOWN AND LEAVE ROUGH.

* OPTIONAL CONSTRUCTION JOINTS IN THE PARAPETS MAY BE USED; RUN BAR REINF. THRU THE JOINT, LAP LONGIT. BARS A MIN. OF 1'-9"; MIN. JOINT SPACING OF 80'-0". DEFINE CONST. JOINT WITH A 3/4" - 'V' GROOVE.

DESIGNER NOTE

A A501 BAR MAY BE USED IN LIEU OF A S501 BAR ADJACENT TO THE PAVING NOTCH ON TYPE A1 ABUTMENTS.

PARAPET	
AREA	2.50 SF
WEIGHT	375 LB/FT

VERTICAL FACE PARAPET 'A'



APPROVED: *Laura Shadewald* DATE: 7-23