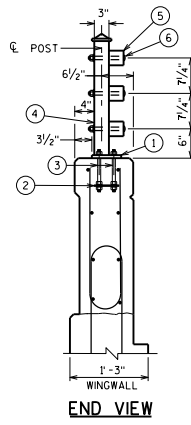


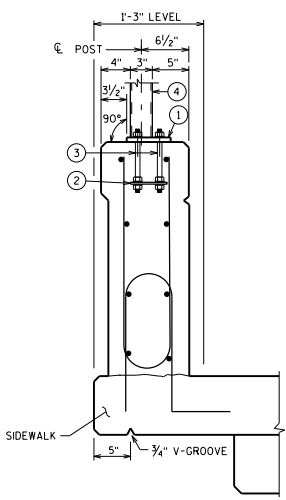
STRIP SEAL EXP. JT. @ ABUT.
 (EXP. JT. DETAIL AT PIER IS SIMILAR)
 FOR TYPE A1 ABUT., USE 1/2" FILLER
 TO TOP OF PARAPET. SEE STD. 12.01/12.02

INSIDE ELEVATION

OPTIONAL CONSTRUCTION JOINTS IN THE PARAPETS MAY BE USED.
 RUN BAR REINF. THRU THE JOINT, LAP LONGIT. BARS A MIN. OF 1'-9".
 MIN. JOINT SPACING OF 80'-0". DEFINE CONSTR. JT. WITH A 3/4" V-GROOVE.

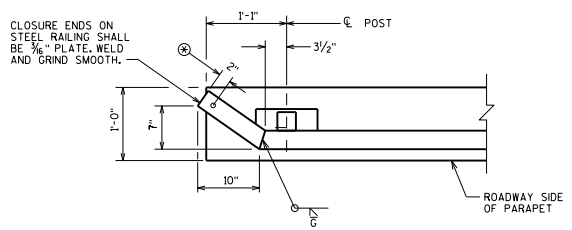


END VIEW



SECTION THRU PARAPET ON BRIDGE

*ADJUST LOCATIONS OF BARS TO ALLOW
 PLACEMENT OF ANCHOR ASSEMBLY FOR
 RAILING AND BEAM GUARD.




END POST DETAIL

⊕ 3/4" DIA. DRAIN HOLE IN
 BOTTOM OF ALL TUBES.

DESIGNER NOTES

- SEE STANDARD 30.09 FOR ADDITIONAL RAILING DETAILS
- SEE STANDARD 30.07 FOR:
 - DEFLECTION JOINT DETAILS AND NOTES
 - BEAM GUARD ANCHOR ASSEMBLY DETAILS
 - SIDEWALK REINFORCEMENT AND DETAILS
 - PARAPET REINFORCING BAR SIZE AND SPACING

STEEL RAILING WEIGHT = 25 LB/FT
 BASED ON 6'-3" POST SPA.

COMBINATION RAILING TYPE '3T'	
	BUREAU OF STRUCTURES
APPROVED: <i>Laura Shadewald</i>	DATE: 1-19