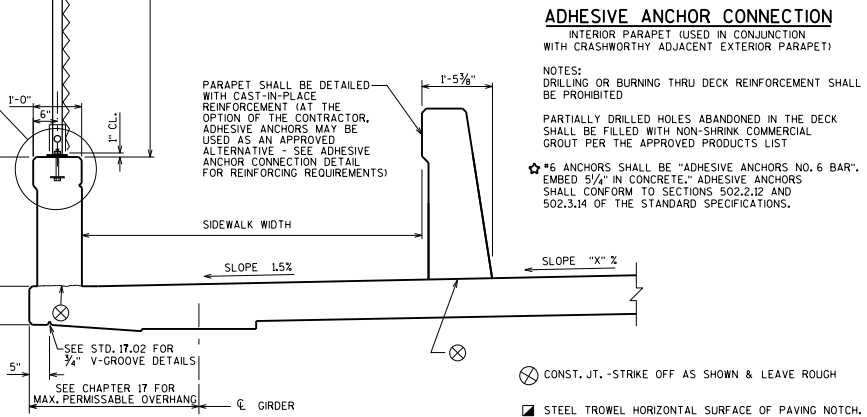
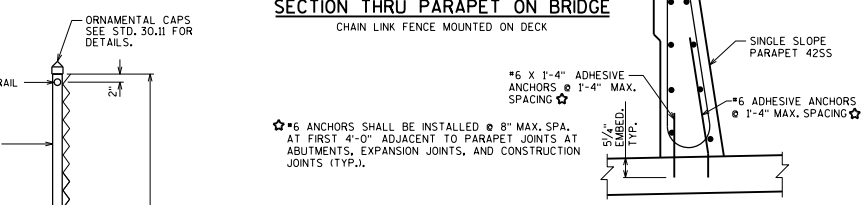
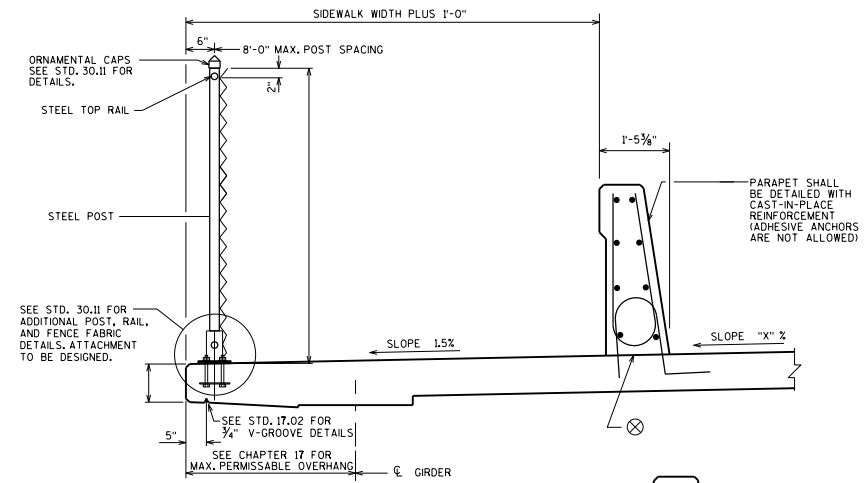
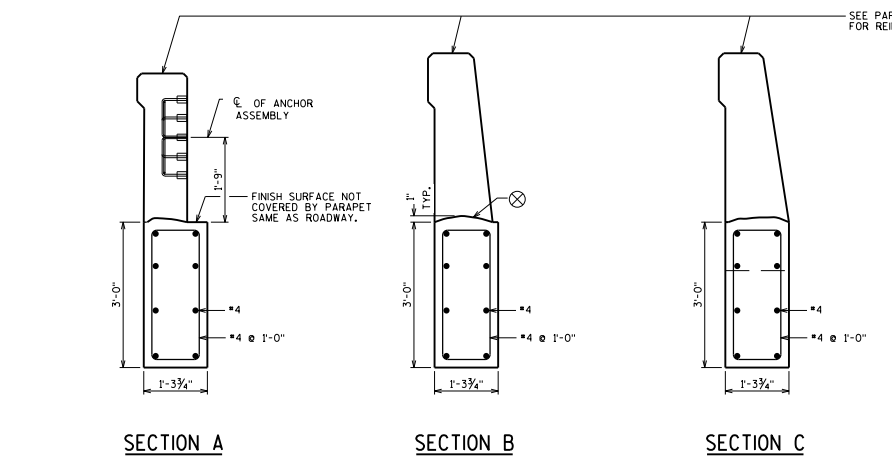
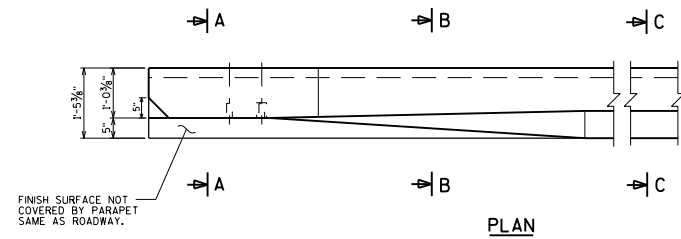
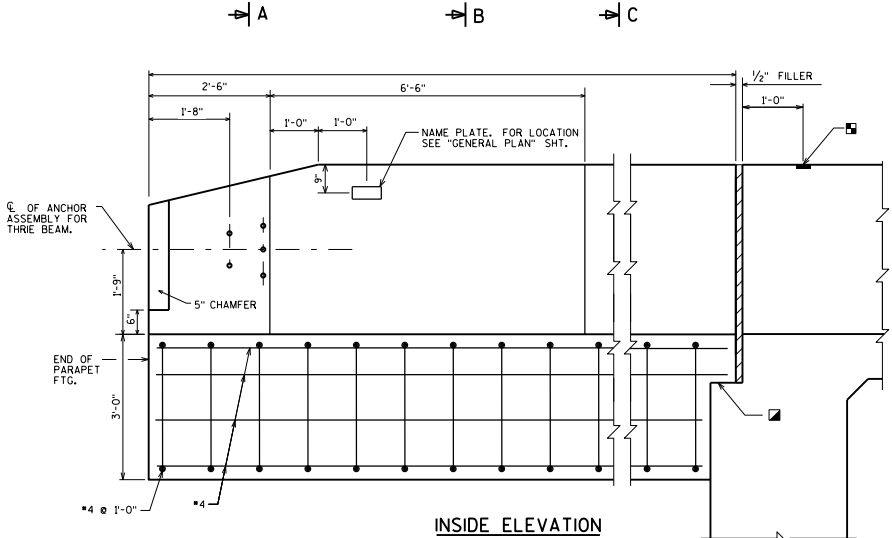


■ BENCHMARK (WHEN SUPPLIED), AVOID PLACING BELOW A RAIL OR FENCE SYSTEM THAT IS ATTACHED TO THE TOP OF THE PARAPET.



CONST. JT. - STRIKE OFF AS SHOWN & LEAVE ROUGH

■ STEEL TROWEL HORIZONTAL SURFACE OF PAVING NOTCH. PLACE MULTIPLE LAYERS OF POLYETHYLENE SHEETS BETWEEN PARAPET FOOTING AND HORIZONTAL SURFACE OF PAVING NOTCH. TOTAL THICKNESS OF SHEETS SHALL BE AT LEAST 0.03".

DESIGNER NOTES

42SS PARAPET SHOWN IN THIS STANDARD. FOR DETAILS, INCLUDING REINFORCING, SEE STANDARD 30.32.

ALL PARAPET FOOTING BARS SHALL BE EPOXY COATED.

DO NOT SHOW THE ADHESIVE ANCHOR CONNECTION DETAIL ON THE PLAN. THE CONTRACTOR MAY REQUEST THIS DETAIL IF DESIRED.

PARAPET FOOTING

BUREAU OF STRUCTURES

APPROVED: *Laura Shadewald* DATE: 1-23

STANDARD 30.10