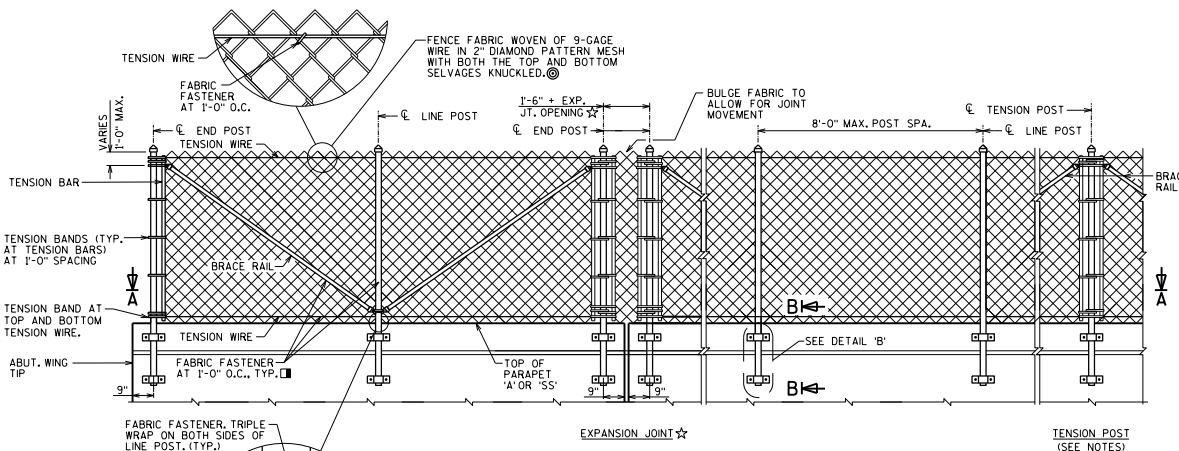


SECTION THRU FENCE ON PARAPET '42SS'
PROTECTIVE SCREENING SHALL BE STRAIGHT.



FENCE PART ELEVATION
(OUTSIDE VIEW OF PARAPET '42SS')

FENCE MEMBER SIZE & WEIGHT

STEEL FENCE MEMBER	OUTSIDE DIAMETER (INCHES)	WEIGHT (LB/FT)
POST (END, LINE, OR TENSION)	3.50	7.576
BRACE RAIL	1.66	2.273

NOTES

POSTS ARE TO BE SET VERTICAL.

METALLIC-COATED FENCE SYSTEM:
ALL FENCE COMPONENTS SHALL BE GALVANIZED STEEL, EXCEPT THE FENCE FABRIC WHICH MAY BE ALUMINUM-COATED STEEL OR GALVANIZED STEEL.

FABRIC SHALL CONFORM TO ASTM A491 OR A392, CLASS 2. STEEL RAILS, POSTS AND POST SLEEVES SHALL CONFORM TO ASTM F1083. STANDARD WEIGHT PIPE (SCHEDULE 40). FITTINGS SHALL CONFORM TO ASTM F626.

THE BID ITEM SHALL BE "FENCE CHAIN LINK - FT."

POLYMER-COATED FENCE SYSTEM:
ALL FENCE COMPONENTS SHALL BE GALVANIZED STEEL WITH A COLORED POLYMER-COATING ON THE OUTSIDE.

FABRIC SHALL CONFORM TO ASTM F668, CLASS 2B. STEEL RAILS, POSTS AND POST SLEEVES SHALL CONFORM TO ASTM F1083. STANDARD WEIGHT PIPE (SCHEDULE 40). FITTINGS SHALL CONFORM TO ASTM F626. SEE THE "BRIDGE SPECIAL PROVISIONS" FOR ADDITIONAL DETAILS.

THE COLOR OF POLYMER-COATING FOR THIS STRUCTURE SHALL BE (SPECIFY): DARK GREEN, BROWN OR BLACK, IN ACCORDANCE WITH ASTM F934.

THE BID ITEM SHALL BE "FENCE CHAIN LINK POLYMER - COATED - FT, B-..."

ALL POST SPACINGS ARE MEASURED HORIZONTALLY ALONG THE C/L OF THE POST.

ANCHOR RODS SHALL BE F1554 GRADE 36. BOLTS SHALL BE ASTM A307, NUTS SHALL BE ASTM A563, AND WASHERS SHALL BE ASTM F436. POST CLAMPS AND POST CLAMP SPACERS SHALL BE ASTM A709, GRADE 36. TENSION WIRE SHALL BE 7 GAGE STEEL WIRE COATED IN ACCORDANCE WITH ASTM A824 AND A817 AS EITHER TYPE I (ALUMINUMIZED) OR TYPE II, CLASS 4 (GALVANIZED).

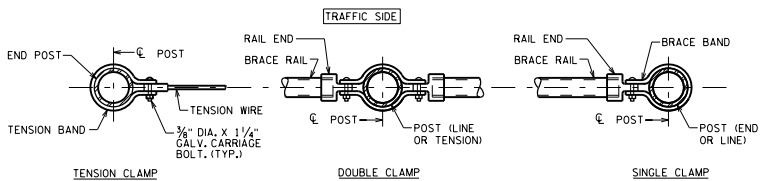
ANCHOR RODS, BOLTS, NUTS, POST CLAMPS, POST CLAMP SPACERS AND WASHERS SHALL BE GALVANIZED.

COMPLETE ANY REQUIRED WELDING OF COMPONENTS BEFORE GALVANIZING.

▲ CONCRETE ADHESIVE ANCHORS 5/8"-INCH, EMBED 5" IN CONCRETE. ADHESIVE ANCHORS SHALL CONFORM TO SECTIONS 502.2.12 AND 502.3.14 OF THE STANDARD SPECIFICATIONS.

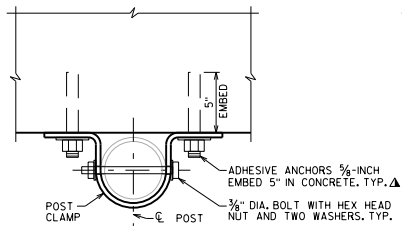
■ ATTACH FABRIC TO RAILS, AND TO POSTS WITHOUT TENSION BANDS, WITH THE WIRES (ROUND, 9-GAGE) SPACED AT 1'-0".

PROVIDE TENSION POST AND BRACE RAILS TO LIMIT TENSION WIRE RUNS TO LESS THAN 500 FEET.

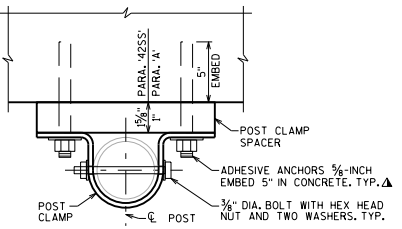


SECTION A-A

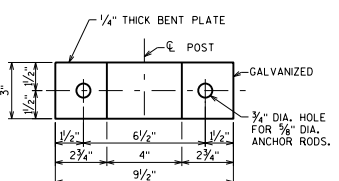
NOTE: PLACE ALL BOLT HEADS ON THE TRAFFIC SIDE



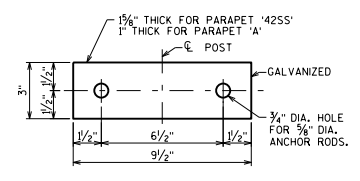
SECTION C-C



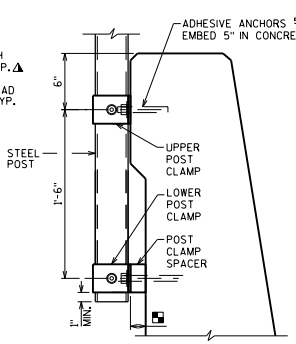
SECTION D-D



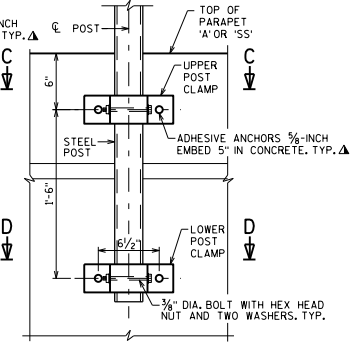
POST CLAMP DETAIL



POST CLAMP SPACER DETAIL



SECTION B-B



DETAIL 'B'

DESIGNER NOTES

THE SIDE-MOUNTED CHAIN LINK FENCE SHOULD ONLY BE USED WHEN THE DESIGN SPEED EXCEEDS 45 MPH AND PROTECTIVE SCREENING IS WARRANTED. FOR DESIGN SPEEDS 45 MPH OR LESS, THE TOP-MOUNTED CHAIN LINK FENCE (STANDARD 30.11) SHOULD BE USED.

THE CHAIN LINK FENCE SYSTEM SELECTED FOR THE STRUCTURE SHALL BE A "METALLIC-COATED FENCE SYSTEM" OR A "POLYMER-COATED FENCE SYSTEM".

PROVIDE 6'-0" CHAIN LINK FENCE FABRIC, UNLESS DIRECTED OTHERWISE. SEE BRIDGE MANUAL 30.9 FOR ADDITIONAL INFORMATION.

⊙ A 1" MESH MAY BE USED ON PROTECTIVE SCREENING IN HIGHLY VULNERABLE AREAS, OR AS STATED IN FDM PROCEDURE II-35-1 FOR PROTECTIVE SCREENING.

☆ EXPANSION JOINT OPENING ≤ 6" OF MOVEMENT. FOR FIXED JOINTS MAINTAIN TYP. VERT. POST SPA. ACROSS JOINT AND PLACE TENSION BAR ON END POST. FOR JOINT OPENINGS > 6" REFER TO STD. 30.11.

WEIGHT OF CHAIN LINK FENCE: (BASED ON 8 FT. POST SPACING)
6 FT. HIGH FENCE = 18 LB / FT
8 FT. HIGH FENCE = 21 LB / FT

CHAIN LINK FENCE SIDE-MOUNTED DETAILS

BUREAU OF STRUCTURES

DATE: _____

APPROVED: _____ 7-21