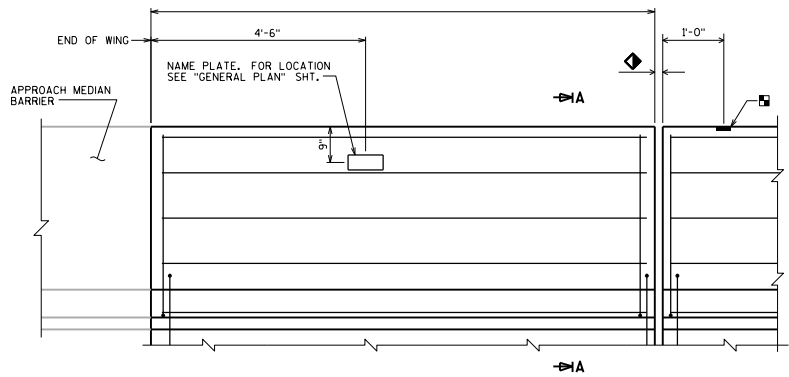
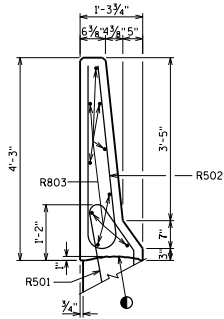


■ BENCHMARK (WHEN SUPPLIED), AVOID PLACING BELOW A RAIL OR FENCE SYSTEM THAT IS ATTACHED TO THE TOP OF THE PARAPET.



INSIDE ELEVATION

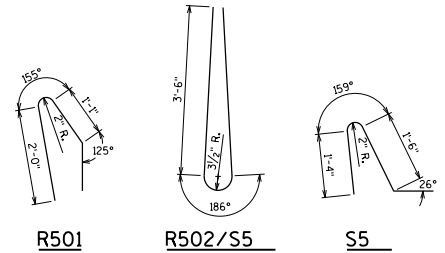
◆ ROADWAY OPENING OR 2 1/2" MIN. FOR EXPANSION JOINT. USE 1/2" OPENING WITH FILLER FOR A1 ABUTMENTS



SECTION A

BILL OF BARS FOR ABUTMENT PARAPETS

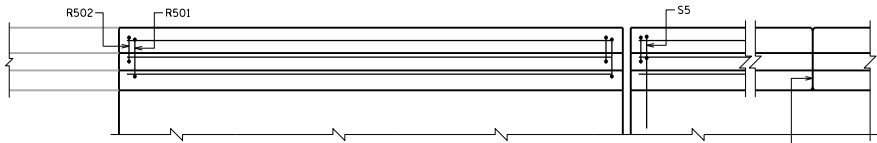
BAR MARK	COAT	ABUT.	ABUT.	LENGTH	REIN.	LOCATION
R501	X			4'-6"	X	PARAPET VERT.
R502	X			7'-11"	X	PARAPET VERT.
R803	X					PARAPET HORIZ.
S5	X			4'-2"	X	PARAPET VERT.
S5	X			7'-11"	X	PARAPET VERT.
S8	X					PARAPET HORIZ.



R501

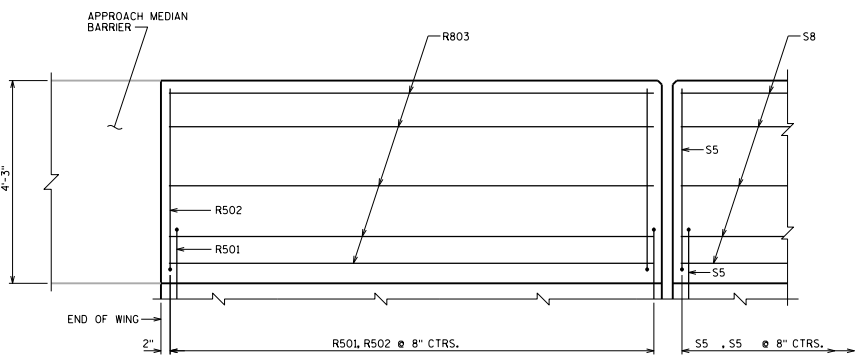
R502/S5

S5

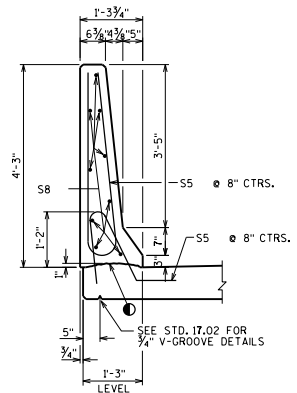


PLAN

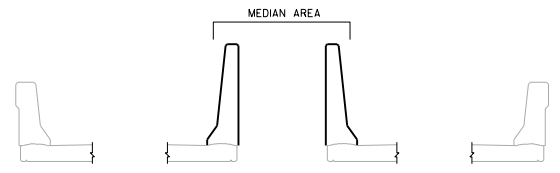
EXPANSION JOINT @ ABUT.
0° SKEW SHOWN. MATCH EXP. JT. OPENING.
FOR TYPE A1 ABUT., USE 1/2" FILLER TO TOP OF PARAPET. SEE STD. 12.01.
OPTIONAL CONSTRUCTION JOINTS IN THE PARAPETS MAY BE USED. RUN BAR REINF. THRU THE JOINT. LAP LONGIT. BARS A MIN. OF 3'-5". MIN. JOINT SPACING OF 80'-0". DEFINE CONST. JOINT WITH A 3/4" - V GROOVE.



OUTSIDE ELEVATION



SECTION THRU PARAPET ON BRIDGE



SLOPED FACE PARAPET "51F" MAY BE USED IN MEDIAN AREA OF ADJACENT STRUCTURES WHEN HIGHWAY MEDIAN APPROACH CONCRETE BARRIER IS 51" HIGH

- CONST. JOINT - STRIKE OFF AS SHOWN.
- A R501 BAR MAY BE USED IN LIEU OF A TYPICAL S5 - BAR ADJACENT TO THE PAVING NOTCH ON TYPE A1 ABUTMENTS.
- AREA = 3.41 FT.²
- WEIGHT = 512 LBS./FT.

SLOPED FACE PARAPET '51F'

DATE: 7-19
APPROVED: *Laura Shadewald*