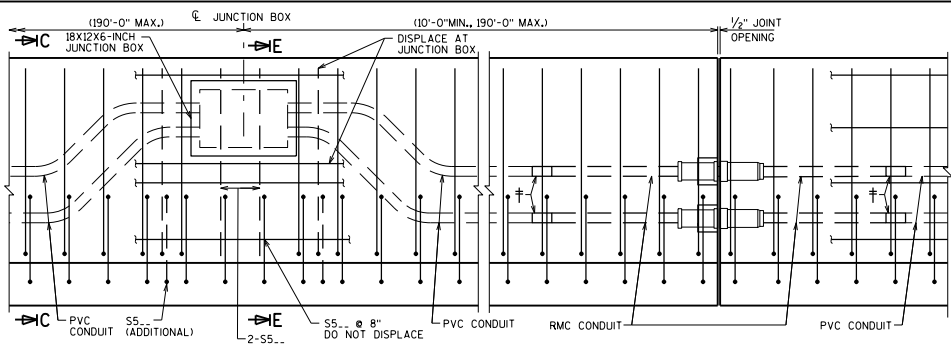
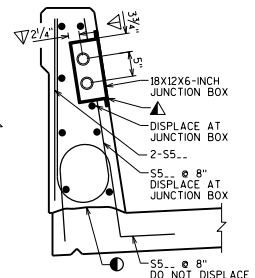


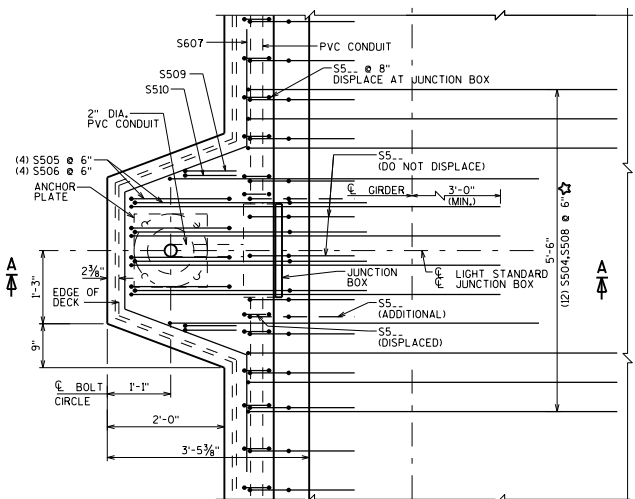
SECTION C-C



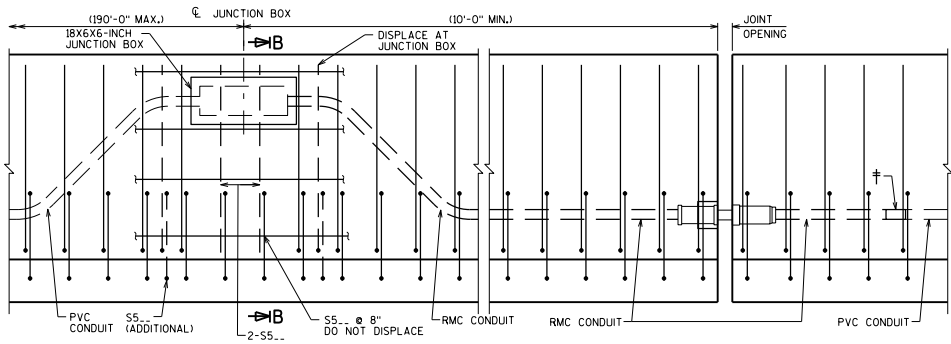
INSIDE ELEVATION AT JUNCTION BOX AT SEMI-EXP. JOINT  
(DECK STEEL NOT SHOWN FOR CLARITY)



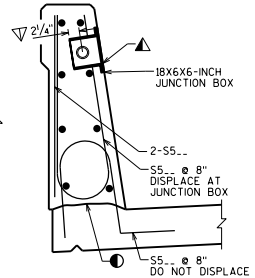
SECTION E-E



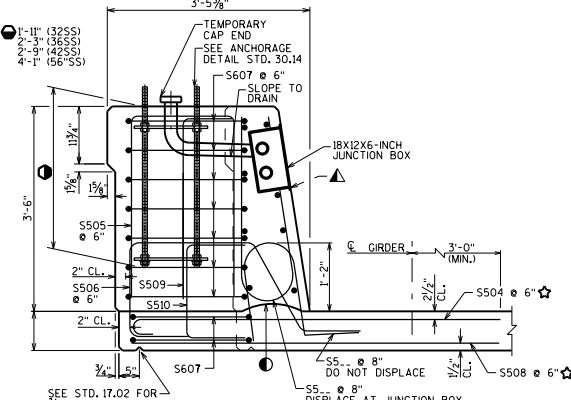
PLAN AT LIGHT STANDARD  
(DECK STEEL NOT SHOWN FOR CLARITY)



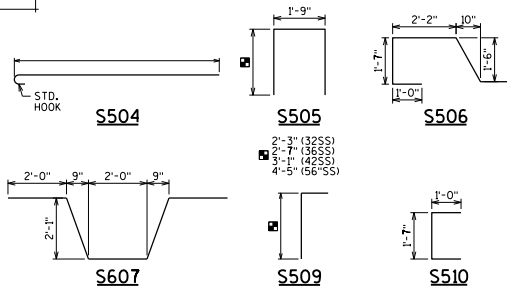
INSIDE ELEVATION AT JUNCTION BOX AT EXP. JOINT  
(DECK STEEL NOT SHOWN FOR CLARITY)



SECTION B-B



SECTION A-A



**BILL OF BARS**

BAR MARK	NO. REOD.	LENGTH				BY/1	LOCATION
		32SS	36SS	42SS	56SS		
S504	X					X	LIGHT STD. - TRANS. - DECK - TOP
S505	X	6-0	6-8	7-8	10-0	X	LIGHT STD. - VERT. - PARAPET
S506	X	7-0	7-0	7-0	7-0	X	LIGHT STD. - VERT. - PARAPET
S607	X	10-0	10-0	10-0	10-0	X	LIGHT STD. - HORIZ. - PARAPET
S508	X					X	LIGHT STD. - TRANS. - DECK - BOT.
S509	X	3-2	3-6	4-0	5-4	X	LIGHT STD. - VERT. - PARAPET
S510	X	3-4	3-4	3-4	3-4	X	LIGHT STD. - VERT. - PARAPET

**DESIGNER NOTES**

- THIS STANDARD ACCOMMODATES ELECTRICAL SERVICE TO LIGHTS STANDARDS MOUNTED ON STRUCTURES. ADDITIONAL REQUIREMENTS MAY BE REQUIRED FOR OTHER SYSTEMS. SEE BRIDGE MANUAL SECTION 32.6 FOR ADDITIONAL INFORMATION.
- POSSIBLE BID ITEMS:  
 "JUNCTION BOXES 18X12X6-INCH", EACH  
 "JUNCTION BOXES 18X6X6-INCH", EACH  
 "CONDUIT RIGID NONMETALLIC SCHEDULE 40 2-INCH"  
 "CONDUIT RIGID METALLIC 2-INCH"  
 "ANCHOR ASSEMBLIES LIGHT POLES ON STRUCTURE"
- SEE STD. 30.14 FOR ANCHORAGE DETAIL AND LIMITATIONS.
- SEE STD. 30.22 FOR CONDUIT DETAILS AND NOTES.
- THIS STANDARD ACCOMMODATES A MAXIMUM 15" DIA. BOLT HOLE CIRCLE AND A MAXIMUM 15" X 15" SQUARE ANCHOR PLATE WITH (4) 1" DIA. ANCHOR BOLTS. THIS STANDARD IS BASED ON A 8" MIN. DECK THICKNESS AND A MAXIMUM OVERHANG OF 3'-7" FROM GIRDER TO EDGE OF DECK.
- ★ THESE BARS ARE IN ADDITION TO STANDARD TRANSVERSE BARS IN DECK. FOR CONC. SLAB STRUCTURES, REPLACE S504 & S508 BARS W/ S404 BARS @ 6" SPA. (W/O HOOK @ ENDS, 5'-6" LONG).
- CONDUIT REQUIREMENTS:  
 • USE (1) - 2" DIA. CONDUIT TO PROVIDE ELECTRICAL SERVICE TO LIGHTS MOUNTED ON TOP OF THE PARAPET.  
 • USE (2) - 2" DIA. CONDUITS IF AN ADDITIONAL ELECTRICAL SERVICE IS REQUIRED.
- JUNCTION BOX REQUIREMENTS:  
 • USE A JUNCTION BOX TO KEEP A CONTINUOUS RUN OF CONDUIT (PULL LENGTH) TO A MAXIMUM OF 190 FT.  
 - USE A 18" X 6" X 6" JUNCTION BOX WHEN (1) - 2" DIA. CONDUIT IS USED.  
 - USE A 18" X 12" X 6" JUNCTION BOX WHEN (2) - 2" DIA. CONDUITS ARE USED.  
 • USE A 18" X 12" X 6" JUNCTION BOX AT EACH LIGHT STANDARD (CENTERED ON LIGHT C).  
 • USE A JUNCTION BOX AT EACH EXPANSION JOINT. LOCATE 10'-0" MINIMUM FROM EACH EXPANSION JOINT. (NOT REQUIRED AT SEMI-EXP. OR FIXED JOINTS)

**LEGEND**

- CONSTRUCTION JOINT, STRIKE OFF AS SHOWN.
- ▲ CUT OUT + 1" OF GASKET AT BOTTOM OF JUNCTION BOX COVER TO ALLOW FOR DRAINAGE.
- ▽ LOCATION OF CONDUIT IS MEASURED FROM OUTSIDE EDGE OF JUNCTION BOX.
- † NONMETALLIC CONDUIT TO METALLIC CONDUIT ADAPTER FITTING (UL OR NRTL LISTED FOR ELECTRICAL USE SHALL BE USED)
- PVC = POLYVINYL CHLORIDE (RIGID NONMETALLIC) CONDUIT
- RMC = RIGID METALLIC CONDUIT

**LIGHT STANDARD AND JUNCTION BOX FOR PARAPETS**



APPROVED: *Laura Shadewald* DATE: 7-18