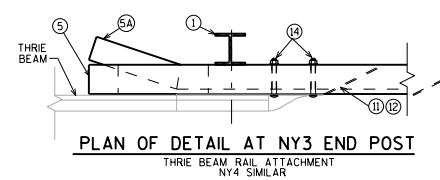
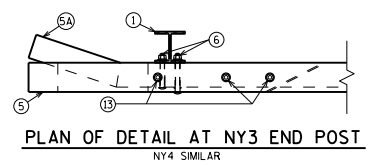


LEGEND

- ① #6 X 25 WITH 1/8" X 1 3/8" HORIZONTAL SLOTTED HOLES ON SIDE OF POST FOR BOLT NO. 6 AT NO. 5 (AND TOP RAIL FOR NY4). USE 1" DIA. HOLE FOR BOLT NO. 6 AT NO. 5A BOTTOM RAIL. CUT BOTTOM OF POST TO MATCH CROSS SLOPE OF ROADWAY. PLACE POST VERTICAL. PLACE POSTS NORMAL TO GRADE LINE.
- ② PLATE 1/2" X 10" X 1-2". SEE STANDARDS 30.26 AND 30.27 FOR MORE INFORMATION.
- ③ TS 6 X 6 X 3/8" STRUCTURAL TUBING. USE 7/8" DIA. HOLES IN TOP AND BOTTOM OF RAILS FOR BOLT NO. 13 AS SHOWN IN PLAN DETAILS. USE 1" DIA. HOLES IN FRONT AND BACK OF RAILS FOR BOLTS NO. 6 & NO. 14 AS SHOWN IN ELEVATION DETAILS.
- ④ TS 5 X 3 X 1/2" STRUCTURAL TUBING. USE 1" DIA. HOLES FOR BOLT NO. 6 IN TOP RAIL FOR NY4 (FRONT & BACK). USE 1/8" X 1 3/8" HORIZONTAL SLOTTED HOLES FOR BOLT NO. 6 IN BOTTOM RAIL (FRONT & BACK) AND A 2" O.D. WASHER UNDER BOLT HEAD.
- ⑤ 7/8" DIA. A325 SLOTTED ROUND HEAD BOLT WITH HEX NUT, 3/8" X 1 3/4" X 1 3/4" WASHER, AND SPRING LOCK WASHER (I REQUIRED AT RAIL NO. 5 TO POST NO. 1 CONNECTION LOCATIONS SHOWN, 2 REQUIRED AT RAIL NO. 5A TO POST NO. 1 CONNECTION LOCATIONS SHOWN).
- ⑥ TS 6 X 6 X 3/8" STRUCTURAL TUBING. USE 1" DIA. HOLES IN FRONT AND BACK FOR BOLT NO. 14 & 7/8" DIA. HOLES IN TOP & BOTTOM FOR BOLT NO. 13.
- ⑦ L 6 X 6 X 1/2" STRUCTURAL ANGLE. USE 7/8" DIA. HOLES IN TOP FLANGE FOR BOLT NO. 13.
- ⑧ 3/4" DIA. A325 FULLY THREADED BOLTS, 2 WASHERS AND A HEAVY HEX NUT, ON EACH BOLT. NUT TO BE FINGER TIGHT, 3 BOLTS AT EACH END POST.
- ⑨ 7/8" DIA. A325 SLOTTED ROUND HEAD BOLT WITH HEX NUT AND 3/8" X 2" X 2" WASHER FOR CONNECTION OF THRIE BEAM (4 REQUIRED)

NOTES

STRUCTURAL TUBING SHALL CONFORM TO THE REQUIREMENTS OF ASTM A500 GRADE B OR C WITH A CERTIFIED $F_y \geq 50$ KSI. STRUCTURAL ANGLE SHALL CONFORM TO THE REQUIREMENTS OF ASTM A709 GRADE 50.



END POST DETAILS FOR TUBULAR STEEL RAILING TYPE NY3 & NY4

BUREAU OF STRUCTURES

APPROVED: *Laura Shadewald* DATE: 7-22