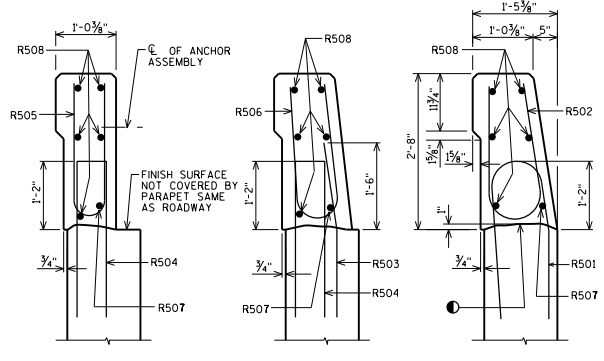


BENCHMARK (WHEN SUPPLIED), AVOID PLACING BELOW A RAIL OR FENCE SYSTEM THAT IS ATTACHED TO THE TOP OF THE PARAPET.

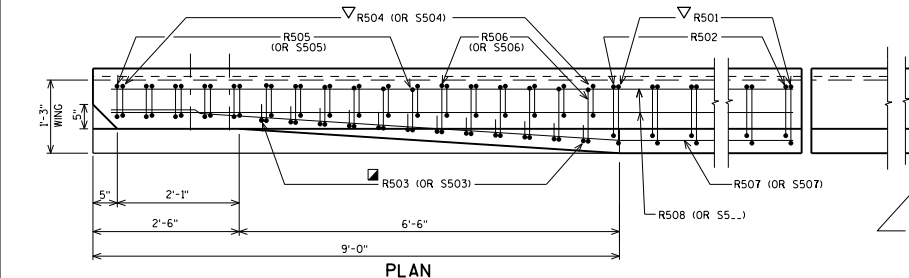
NOTE: FOR SECTIONS A, B & C ONLY THE PARAPET TERMINATING ON A WING IS SHOWN. TERMINATION ON A DECK IS SIMILAR.



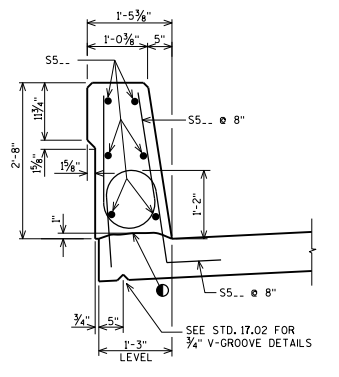
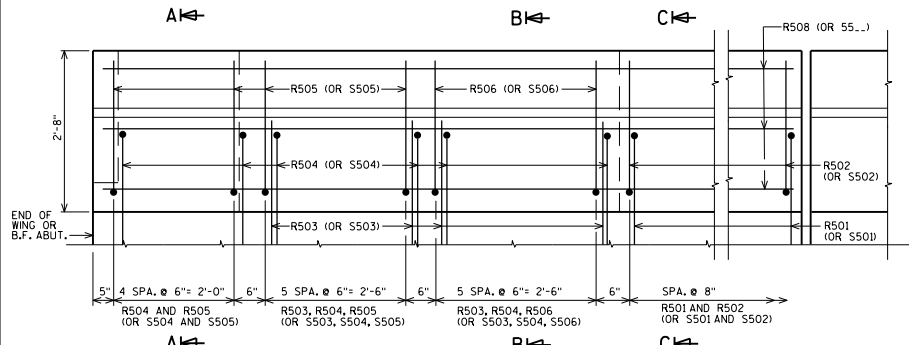
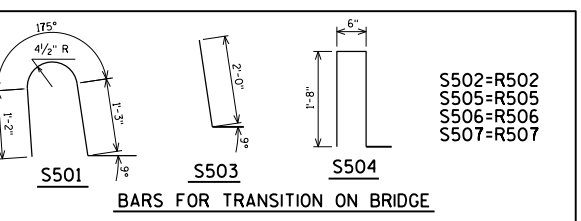
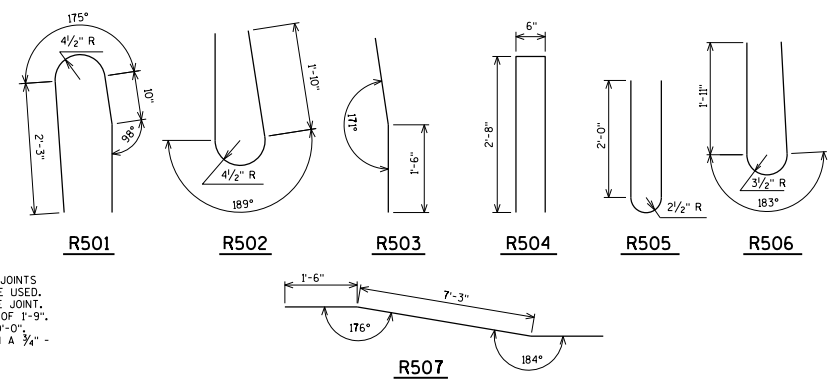
**BILL OF BARS**

FOR ABUTMENT PARAPETS

BAR MARK	QTY	ABUT.	LENGTH	BEY	LOCATION
R501	X		5-10	X	PARAPET-VERT.
R502	X		5-0	X	PARAPET-VERT.
R503	X		3-0	X	PARAPET-VERT.
R504	X		5-7	X	PARAPET-VERT.
R505	X		4-9	X	PARAPET-VERT.
R506	X		4-10	X	PARAPET-VERT.
R507	X			X	PARAPET-HORIZ.
R508	X				PARAPET-HORIZ.
S501	X		4-5	X	PARAPET-VERT.
S503	X		2-9	X	PARAPET-VERT.
S504	X		4-4	X	PARAPET-VERT.



OPTIONAL CONSTRUCTION JOINTS IN THE PARAPETS MAY BE USED. RUN BAR REINF. THRU THE JOINT. LAP LONGIT. BARS A MIN. OF 1'-9". MIN. JOINT SPACING OF 80'-0". DEFINE CONST. JOINT WITH A 3/4" V-GROOVE.



AREA = 3.09 SF  
WEIGHT = 464 LB/FT  
CONST. JOINT - STRIKE OFF AS SHOWN.

R503 BARS MAY BE PLACED AFTER CONCRETE IS POURED BUT BEFORE INITIAL SET HAS TAKEN PLACE. USE CARE TO PLACE R503 OR S503 BARS CORRECTLY ALONG TRANSITION OF PARAPET.

R501 AND R504 BARS TO BE TIED TO WING STEEL BEFORE WING IS POURED.  
DESIGNER MAY ELECT TO USE A R501 BAR IN LIEU OF A S501 BAR ADJACENT TO THE PAVING NOTCH ON TYPE A1 ABUTMENTS.

**SINGLE SLOPE PARAPET 32SS**



APPROVED: *Laura Shadewald* DATE: 7-19