

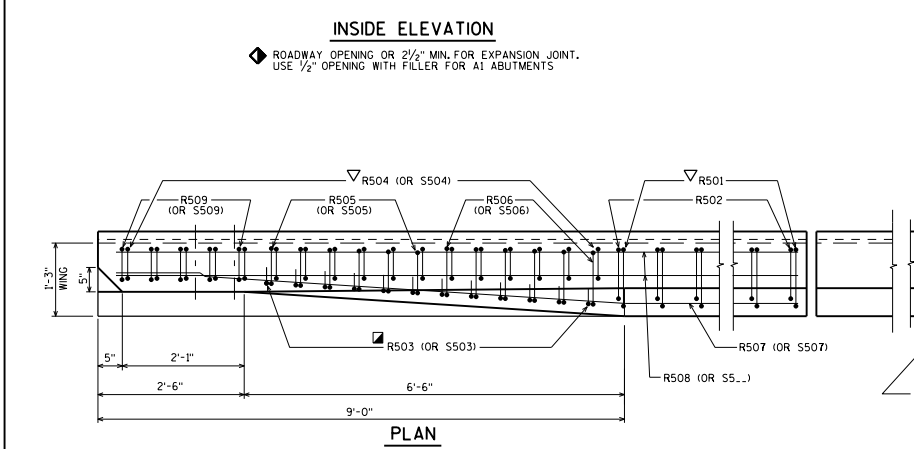
**INSIDE ELEVATION**

◆ ROADWAY OPENING OR 2/2" MIN. FOR EXPANSION JOINT. USE 1/2" OPENING WITH FILLER FOR AT ABUTMENTS

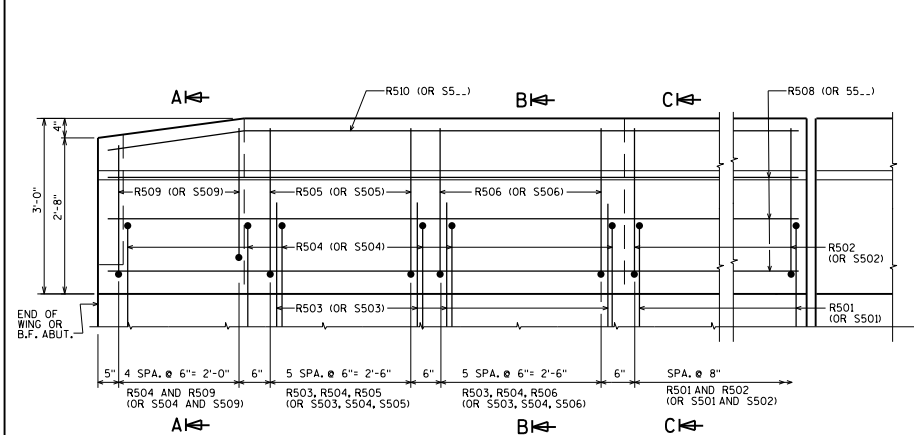
◆ BENCHMARK (WHEN SUPPLIED), AVOID PLACING BELOW A RAIL OR FENCE SYSTEM THAT IS ATTACHED TO THE TOP OF THE PARAPET.

NOTE: FOR SECTIONS A, B & C ONLY THE PARAPET TERMINATING ON A WING IS SHOWN. TERMINATION ON A DECK IS SIMILAR.

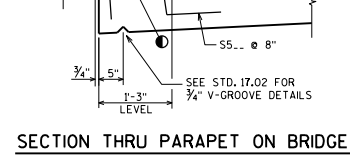
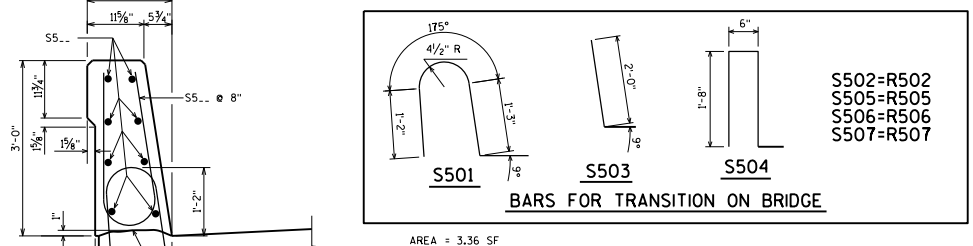
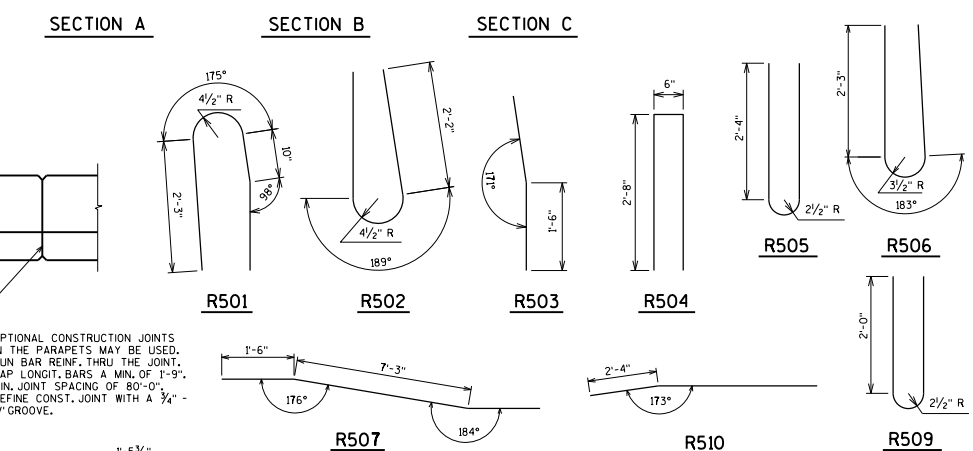
BILL OF BARS					
FOR ABUTMENT PARAPETS					
BAR MARK	QTY	ABUT.	LENGTH	REIN.	LOCATION
R501	X		5-10	X	PARAPET-VERT.
R502	X		5-8	X	PARAPET-VERT.
R503	X		3-0	X	PARAPET-VERT.
R504	X		5-7	X	PARAPET-VERT.
R505	X		5-5	X	PARAPET-VERT.
R506	X		5-6	X	PARAPET-VERT.
R507	X			X	PARAPET-HORIZ.
R508	X			X	PARAPET-HORIZ.
R509	X		4-9	X	PARAPET-VERT.
R510	X			X	PARAPET-HORIZ.
S501	X		4-5	X	PARAPET-VERT.
S503	X		2-9	X	PARAPET-VERT.
S504	X		4-4	X	PARAPET-VERT.



**PLAN**



**OUTSIDE ELEVATION**



**SECTION THRU PARAPET ON BRIDGE**

AREA = 3.36 SF  
WEIGHT = 504 LB/FT

● CONST. JOINT - STRIKE OFF AS SHOWN.

◆ R503 BARS MAY BE PLACED AFTER CONCRETE IS POURED BUT BEFORE INITIAL SET HAS TAKEN PLACE. USE CARE TO PLACE R503 OR S503 BARS CORRECTLY ALONG TRANSITION OF PARAPET.

▽ R501 AND R504 BARS TO BE TIED TO WING STEEL BEFORE WING IS POURED. DESIGNER MAY ELECT TO USE A R501 BAR IN LIEU OF A S501 BAR ADJACENT TO THE PAVING NOTCH ON TYPE AT ABUTMENTS.

**SINGLE SLOPE PARAPET 36SS**



APPROVED: *Laura Shadewald* DATE: 7-19