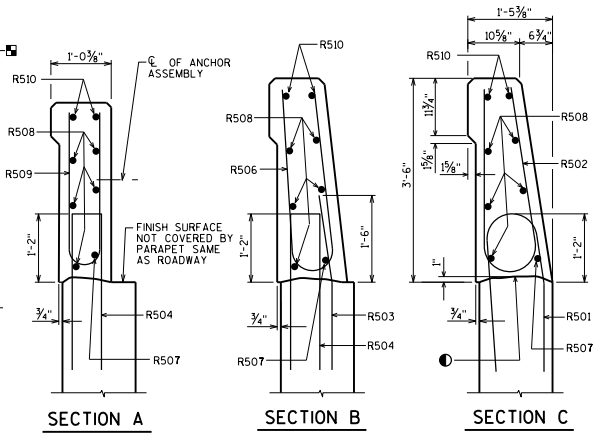


INSIDE ELEVATION

◆ ROADWAY OPENING OR 2 1/2" MIN. FOR EXPANSION JOINT. USE 1/2" OPENING WITH FILLER FOR ALL ABUTMENTS

■ BENCHMARK (WHEN SUPPLIED), AVOID PLACING BELOW A RAIL OR FENCE SYSTEM THAT IS ATTACHED TO THE TOP OF THE PARAPET.

NOTE: FOR SECTIONS A, B & C ONLY THE PARAPET TERMINATING ON A WING IS SHOWN. TERMINATION ON A DECK IS SIMILAR.



SECTION A

SECTION B

SECTION C

BILL OF BARS

FOR ABUTMENT PARAPETS

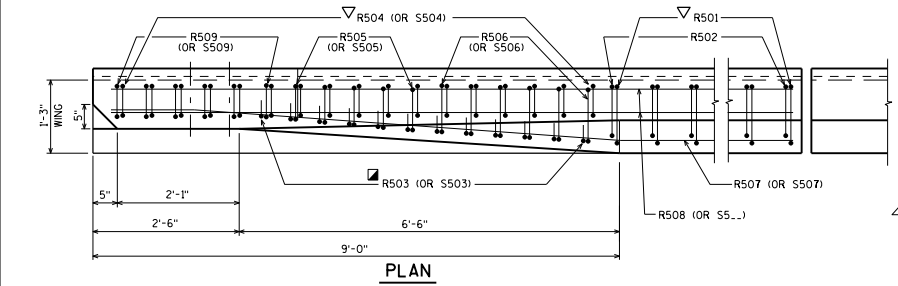
BAR MARK	COUNT	ABUT.	ABUT.	LENGTH	REIN.	BAR SERIES	LOCATION
R501	X			5-10	X		PARAPET-VERT.
R502	X			6-8	X		PARAPET-VERT.
R503	X			3-0	X		PARAPET-VERT.
R504	X			5-7	X		PARAPET-VERT.
R505	X			6-5	X		PARAPET-VERT.
R506	X			6-6	X		PARAPET-VERT.
R507	X				X		PARAPET-HORIZ.
R508	X				X		PARAPET-HORIZ.
R509	X			5-5	X	▲	PARAPET-VERT.
R510	X				X		PARAPET-HORIZ.
S501	X			4-5	X		PARAPET-VERT.
S503	X			2-9	X		PARAPET-VERT.
S504	X			4-4	X		PARAPET-VERT.

▲ LENGTH SHOWN FOR BAR IS AN AVERAGE LENGTH AND SHOULD ONLY BE USED FOR BAR WEIGHT CALCULATIONS. SEE BAR SERIES TABLE FOR ACTUAL LENGTHS.

BAR SERIES TABLE

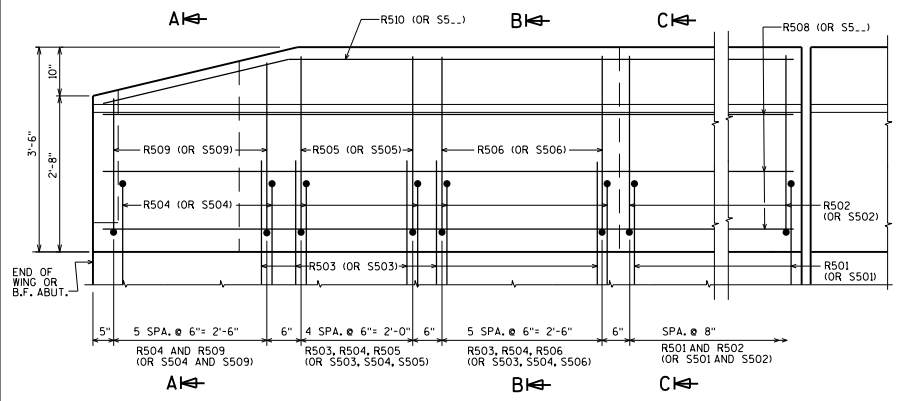
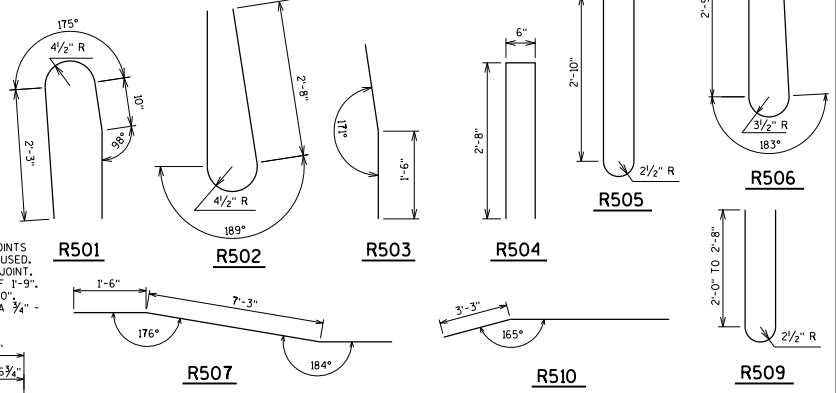
MARK	NO. REQD.	LENGTH
R509	4 SERIES OF 6	4'-9" TO 6'-1"

BUNDLE AND TAG EACH SERIES SEPARATELY.

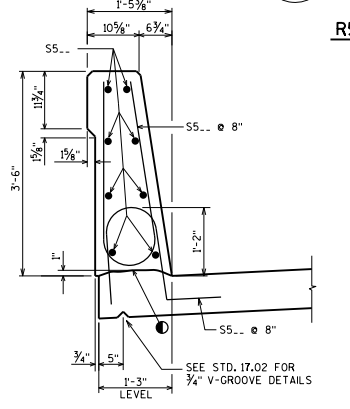


PLAN

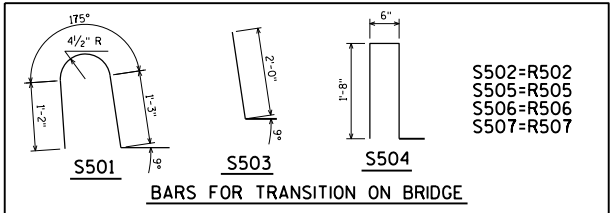
OPTIONAL CONSTRUCTION JOINTS IN THE PARAPETS MAY BE USED. RUN BAR REINF. THRU THE JOINT. LAP LONGIT. BARS A MIN. OF 1'-9". MIN. JOINT SPACING OF 8'-0". DEFINE CONST. JOINT WITH A 3/4" V-GROOVE.



OUTSIDE ELEVATION



SECTION THRU PARAPET ON BRIDGE



BARS FOR TRANSITION ON BRIDGE

AREA = 3.75 SF
WEIGHT = 563 LB/FT

● CONST. JOINT - STRIKE OFF AS SHOWN.

■ R503 BARS MAY BE PLACED AFTER CONCRETE IS POURED BUT BEFORE INITIAL SET HAS TAKEN PLACE. USE CARE TO PLACE R503 OR S503 BARS CORRECTLY ALONG TRANSITION OF PARAPET.

▽ R501 AND R504 BARS TO BE TIED TO WING STEEL BEFORE WING IS POURED. DESIGNER MAY ELECT TO USE A R501 BAR IN LIEU OF A S501 BAR ADJACENT TO THE PAVING NOTCH ON TYPE AT ABUTMENTS.

SINGLE SLOPE PARAPET 42SS



APPROVED: *Laura Shadewald* DATE: 7-19