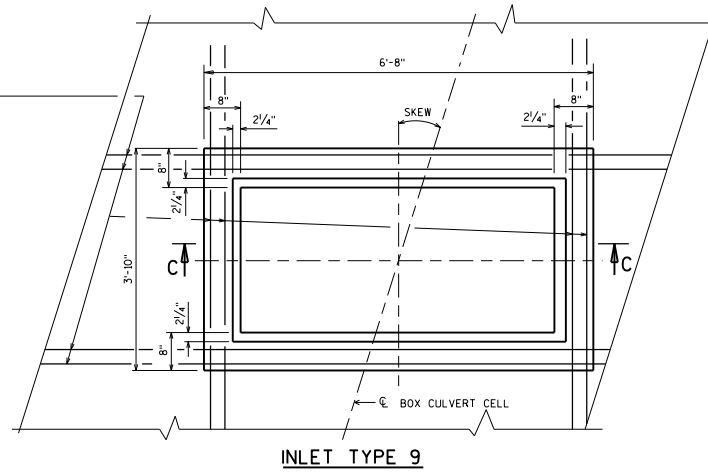


INLET TYPE 8



INLET TYPE 9

MEDIAN INLET PLAN

(INLET COVER NOT SHOWN)

NOTES

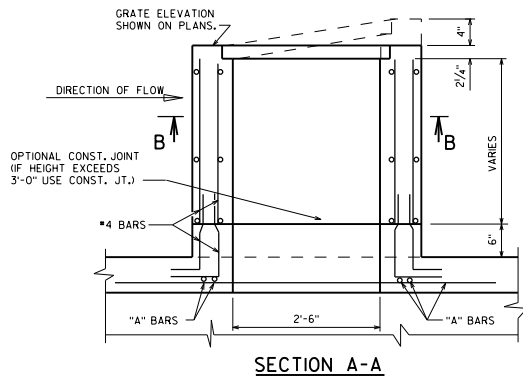
FIELD CUT BAR STEEL REINFORCEMENT IN TOP SLAB TO CLEAR THE OPENING PROVIDED FOR MEDIAN INLET.
ADJUSTMENT OF THE COVER TO GRADE MAY BE ACCOMPLISHED BY THE USE OF MORTAR AND BRICK. MAXIMUM ADJUSTMENT SHALL BE 8".

DESIGN NOTES

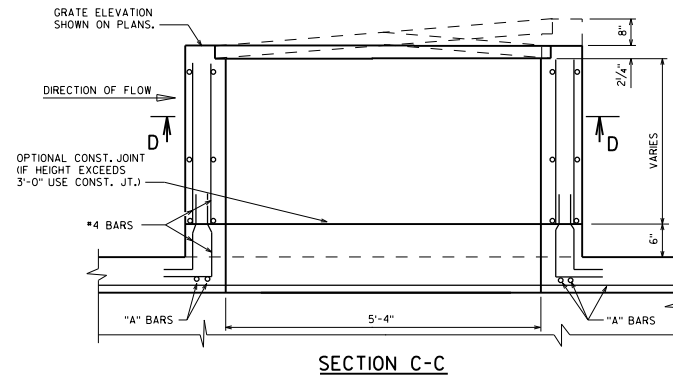
SIZE AND LENGTH OF "A" BARS TO BE DETERMINED BY THE DESIGNER.

STEEL SHOWN IS ADEQUATE TO DEPTHS UP TO 15'-6" FOR INLET TYPE 9 AND 44'-0" FOR INLET TYPE 8, ASSUMING A COEFFICIENT OF LATERAL EARTH PRESSURE OF 0.5 AND A UNIT WEIGHT OF SOIL OF 0.120 KCF.

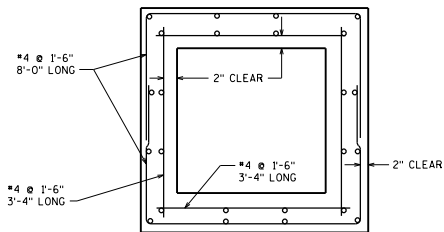
VERTICAL STEEL ADEQUATE FOR DEPTH UP TO 25'-0" ASSUMING WIND LOAD OF 50#/50.FT..



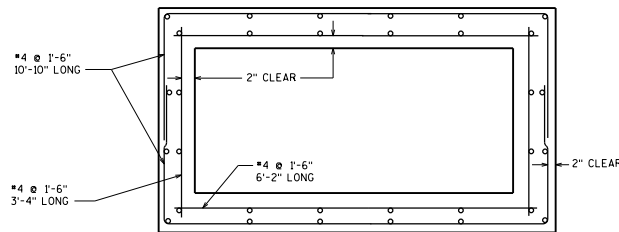
SECTION A-A



SECTION C-C



SECTION B-B



SECTION D-D

BOX CULVERT MANHOLE FOR INLET TYPE 8 & 9



BUREAU OF STRUCTURES

APPROVED: *Laura Shadewald*

DATE:
7-16