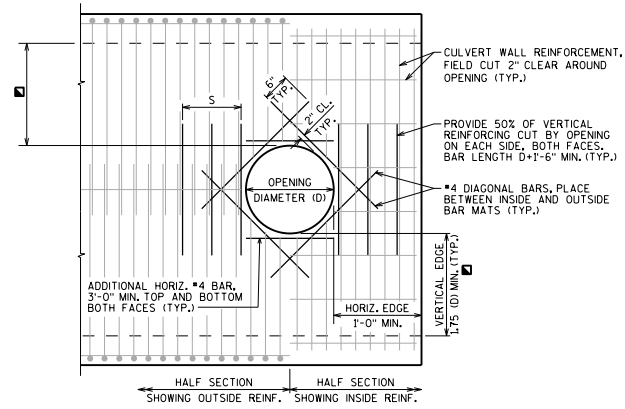


**NOTES**

ALL BAR STEEL REINFORCEMENT SHALL BE CUT 2" CLEAR AROUND OPENING.

**DESIGNER NOTES**

DETAILS SHOWN ARE FOR CAST-IN-PLACE CULVERTS. PRECAST CULVERT DETAILS TO BE SIMILAR.



**ELEVATION**

WHEN  $D < 1'-6"$   $S = 1'-6"$   
 WHEN  $D > 1'-6"$   $S = 1'-6"$  MIN, D MAX

PIPE OPENING IN  
 CULVERT WALL



**BUREAU OF  
 STRUCTURES**

APPROVED: *Laura Shadewald*

DATE:  
 1-13