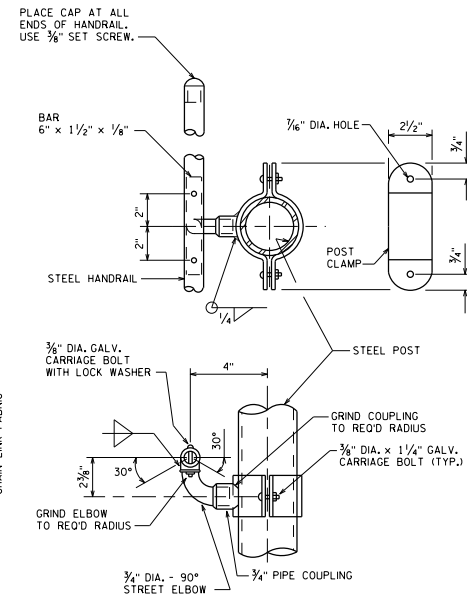


■ ATTACH FABRIC TO RAILS, AND TO POSTS WITHOUT TENSION BANDS, WITH TIE WIRES (ROUND, 9-GAGE) SPACED AT 1'-0".

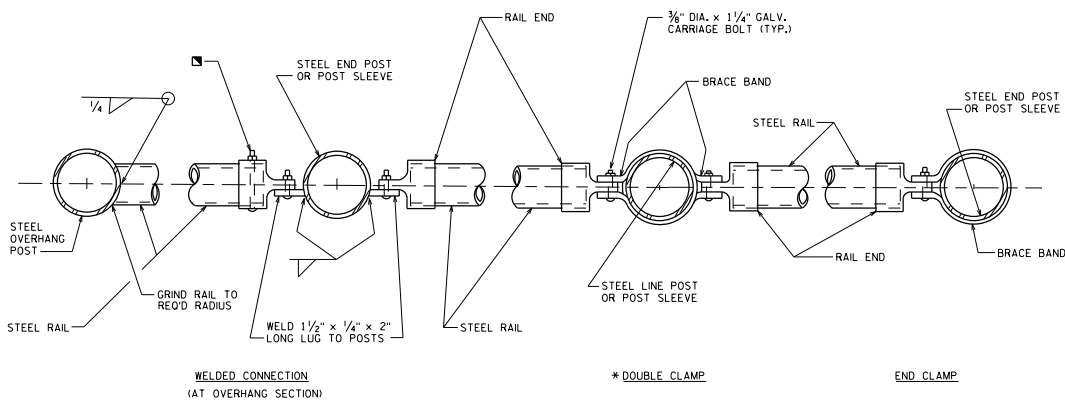
AT LAMP STANDARD

AT EXPANSION JOINT

**ELEVATION OF FENCE**



**HANDRAIL DETAILS**

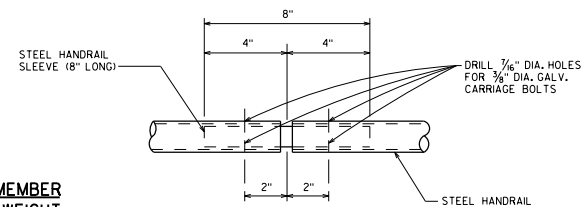


**PLAN OF RAILING**

■ BOLT RAIL TO RAIL END TO SECURE OVERHANG SECTION. ALTERNATE IS TO WELD RAIL DIRECTLY TO END POST.

NOTE: PLACE ALL BOLT HEADS ON SIDE OF FENCE ADJACENT TO PEDESTRIANS

\* ALTERNATE TO DOUBLE CLAMP: USE LINE RAIL CLAMP (BOULEVARD) OR 180° BRACE BAND, WHICH MAY BE USED WHEN THE POSTS ARE EITHER BOLTED TO THE POST SLEEVES OR DIRECTLY WELDED TO THE BASE PLATE. (AS SHOWN ON STANDARD 30.11)



**HANDRAIL SPLICE**

**FENCE MEMBER SIZE & WEIGHT**

STEEL FENCE MEMBER	OUTSIDE DIAMETER (INCHES)	WEIGHT (LB./FT.)
RAILS	1.660	2.27
END POST	2.375	3.65
OVERHANG POST	2.375	3.65
LINE POST	2.375	3.65
HANDRAIL	1.660	2.27
CROSS RAIL SLEEVE	1.900	2.72
HANDRAIL SLEEVE	1.315	1.68
POST SLEEVE	4.000	9.12

**PEDESTRIAN OVERPASS DETAILS**



APPROVED: *Laura Shadewald* DATE: 7-10