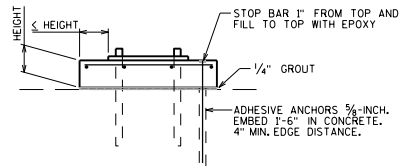


CONCRETE BEARING BLOCK DETAILS

(MAY BE USED IN LIEU OF PLATE 'E' AS SHOWN ON STD. 40.08)



PRECAST CONCRETE BLOCK DETAIL

DEPTH = MIN. 5", MAX. 1'-0" *

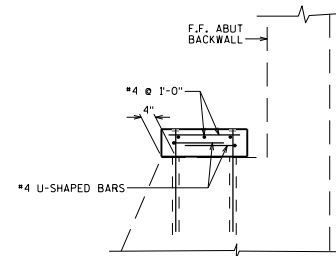
ANCHOR IN AT LEAST 4 LOCATIONS (ANCHORS INCLUDE ADHESIVE ANCHORS, ANCHOR BOLTS OR COMBINATION).

GROUT 1/4" BENEATH PRECAST ELEMENT - ELIMINATE STRESS CONCENTRATION AND REDUCE CRACKING.

PRECAST BLOCK (OR ANY CONCRETE BLOCK) MUST EXTEND BEYOND BEARING A DISTANCE EQUAL TO, OR GREATER THAN, THE HEIGHT OF THE CONCRETE BLOCK *. THIS IS TO ACCOUNT FOR 45-DEGREE DOWNWARD AND OUTWARD STRESS DISTRIBUTION. THIS PROVISION CAN BE DISREGARDED IF A FULL-DEPTH CONCRETE DIAPHRAGM IS USED IN CONJUNCTION WITH A 1/2" THICK ELASTOMERIC PAD (FIXED SEAT).

REINFORCEMENT SHOULD BE IN BOTH DIRECTIONS UTILIZING #4 @ 1'-0" MAXIMUM SPACING.

BURN EXISTING ANCHOR BOLTS OFF FLUSH WITH BEAM SEAT.



* ALTERNATE DETAIL

TO BE USED FOR CASES WHERE HEIGHT EXCEEDS 1'-0" OR INSUFFICIENT EDGE DISTANCE (PRECAST OPTION SHOWN)

GIRDER REACTIONS AT BEARINGS (KIPS)

		CL BRG. SUPPORT NAME	CL BRG. SUPPORT NAME	CL BRG. SUPPORT NAME
INTERIOR GIRDER	DL			
	LL			
EXTERIOR GIRDER	DL			
	LL			

NOTES

THE THEORETICAL SERVICE LOADS (UNFACTORED) SHOWN IN THE TABLE ARE BASED ON THE BRIDGE IN ITS FINAL CONFIGURATION. ADDITIONAL LOAD RESULTING FROM STAGING AND/OR CONTRACTOR OPERATIONS, SUCH AS UNEVEN JACKING OF ADJACENT GIRDERS OR ADJACENT SUBSTRUCTURE UNITS, IS NOT INCLUDED.

THE LL REACTIONS ARE BASED ON (HS-20/HL-93) AND INCLUDE IMPACT.

EXTERIOR GIRDER DEAD LOAD REACTIONS WERE INCREASED 10% TO ACCOUNT FOR VARIABILITY IN COMPOSITE DL DISTRIBUTION METHODS.

IT IS THE CONTRACTOR'S RESPONSIBILITY TO DETERMINE THE ADEQUACY OF THE GIRDER AT THE JACKING LOCATION.

DESIGNER NOTES

THE BID ITEM FOR JACKING GIRDERS AND REMOVING EXISTING BEARINGS IS 'STSP "REMOVING BEARINGS".'

THE BID ITEM FOR JACKING BRIDGES ONLY IS STSP "BRIDGE JACKING".'

ADD 10% TO THE EXTERIOR GIRDER DL TO ACCOUNT FOR VARIABILITY IN COMPOSITE DL DISTRIBUTION METHODS.

INDICATE WHETHER HS-20 OR HL-93 LOADING WAS USED TO DETERMINE THE LL REACTIONS, WHICH INCLUDE IMPACT.

DO NOT INCLUDE LL REACTIONS FOR JACKING SITUATIONS THAT WILL NOT BE UNDER TRAFFIC.

CONCRETE BEARING BLOCK DETAILS



BUREAU OF STRUCTURES

APPROVED: *Laura Shadewald*

DATE:
1-23