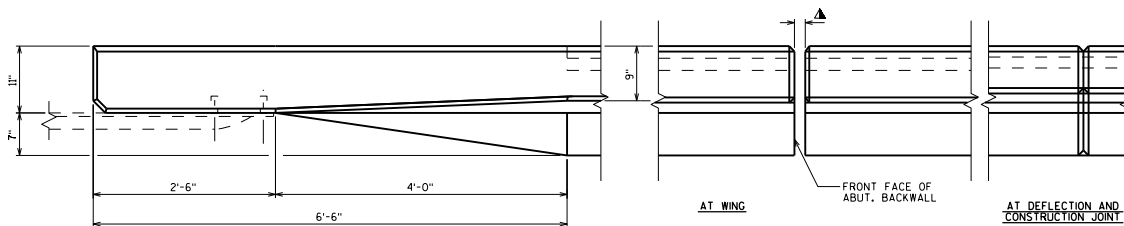
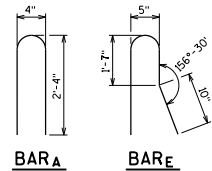


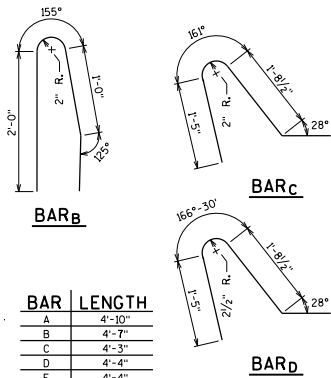
ELEVATION OF PARAPET



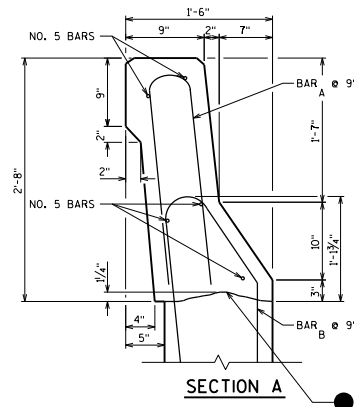
PART PLAN ON PARAPET



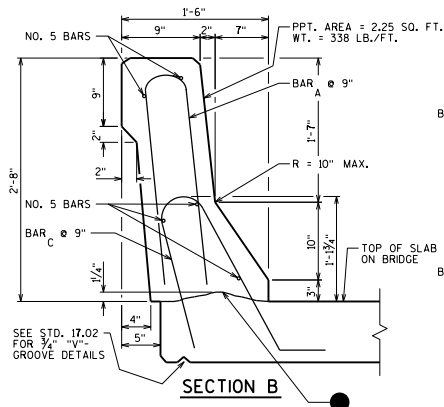
BAR A BAR E



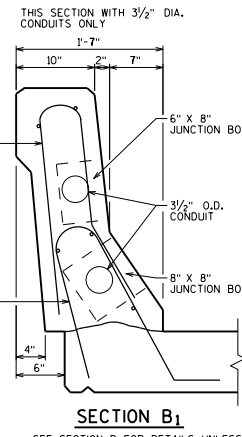
BAR	LENGTH
A	4'-10"
B	4'-7"
C	4'-3"
D	4'-4"
E	4'-4"



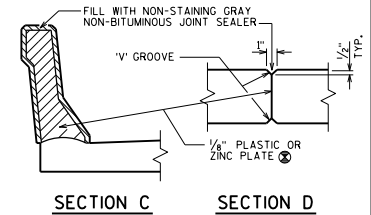
SECTION A



SECTION B



SECTION B1



SECTION C

SECTION D

NOTES

- ALL SLOPED FACE PARAPET "B" REINFORCEMENT ARE NO. 4 BARS UNLESS OTHERWISE SHOWN.
- PLATE REQUIRED WHEN DEFLECTION JOINTS ARE REQUIRED. IF CONSTRUCTION JOINTS IN PARAPETS ARE USED, PLATE SEPARATORS SHALL BE OMITTED. DEFLECTION JOINTS ARE REQUIRED ON SLAB SPAN STRUCTURES ONLY.
- OPTIONAL CONSTRUCTION JOINTS IN THE PARAPETS MAY BE USED. RUN BAR REINFORCEMENT THRU THE JOINT. LAP LONGIT. BARS A MIN. OF 2'-11". MIN. JOINT SPACING OF 80'-0". DEFINE CONST. JOINT WITH A 1" 'V' GROOVE.
- CONST. JOINT - STRIKE OFF AS SHOWN & FINISH WITH A WOODEN TROWEL.

PARAPET	
AREA	2.25 SF
WEIGHT	338 LB/FT

SLOPED FACE PARAPET 'B'



APPROVED: *Laura Shadewald* DATE: 7-23