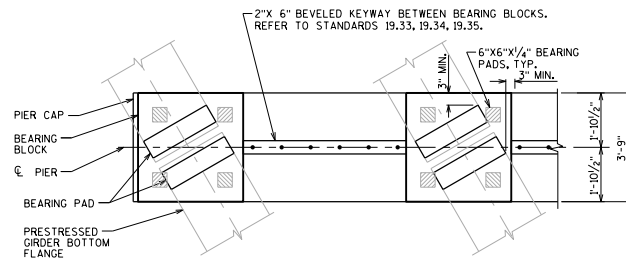


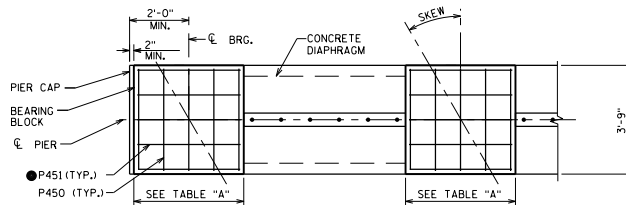
**PARTIAL TRANSVERSE SECTION
AT DIAPHRAGM PIER**

STD. 19.35 SHOWN (STD. 19.33 & 19.34 SIM.)

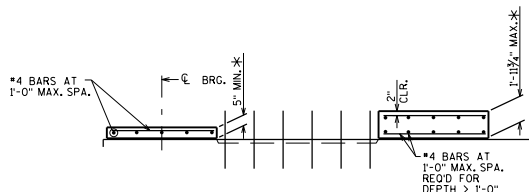
† BARS PLACED PARALLEL TO GIRDERS. SPACING PERPENDICULAR TO GIRDERS. MATCH SIMILAR BAR SHOWN IN CONTRACT PLANS.



PLAN



PLAN



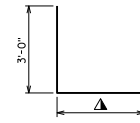
ELEVATION

BILL OF BARS

TOTAL COATED: XX LBS

BAR MARK	NO. REQ'D.	LENGTH	COAT	BENT	LOCATION
P450		3'-5"	X		TOP & BOT. TRANS.
P451		●	X		TOP & BOT. LONG.
P552		1'-"	X		PIER DIAPHRAGM - BOTH FACES HORIZ. - BTWN GIRDERS
P553		1'-"	X	X	PIER DIAPHRAGM - VERT. - BTWN GIRDERS

NOTE: THIS BILL OF BARS IS SHOWN FOR INFORMATION ONLY. PRECAST PIER SHOP DRAWINGS SHALL INCLUDE BILL OF BARS FOR DIAPHRAGM REINFORCEMENT. PAYMENT FOR ALL ITEMS ASSOCIATED WITH THE OPTIONAL PRECAST PIERS SHALL BE INCLUDED IN THE CAST-IN-PLACE CONCRETE BID ITEMS.



P553

▲ MATCH SIMILAR DIAPHRAGM REIN. AS SHOWN IN CONTRACT PLANS.

TABLE "A"

SKEW ANGLE	BEARING BLOCK WIDTH (MIN.)	LONG. BAR LENGTH ●
0° TO 15°	3'-3"	2'-11"
15° TO 20°	3'-6"	3'-2"
> 20°	3'-9"	3'-5"

DESIGNER NOTE

SEE 7.1.4.1.2 FOR ADDITIONAL PRECAST PIER GUIDANCE.

CONTRACTOR NOTES

THE CONTRACTOR SHALL FOLLOW THIS STANDARD WHEN PRECAST PIERS ARE USED IN LIEU OF THE CAST-IN-PLACE PIER.

THE CONTRACTOR MAY USE CAST-IN-PLACE BEARING BLOCKS IN LIEU OF PRECAST BEARING BLOCK DETAILS. THE CONTRACTOR IS RESPONSIBLE FOR THE ADDITIONAL WEIGHT, WHICH MAY CAUSE PIER CAP SEGMENTS TO BE IN EXCESS OF 90 KIPS.

SEE STANDARD 7.07 FOR CAST-IN-PLACE BEARING BLOCK DETAILS AND ADDITIONAL NOTES.

PRECAST CONCRETE DETAIL NOTES

PRECAST BEARING BLOCK DETAILS SHALL ONLY BE USED WHEN PLANS INDICATE ALLOWANCE FOR PRECAST PIERS.

* PRECAST HEIGHT = VARIES (5" MIN. TO 1'-11 1/4" MAX.). MANUFACTURER TO DETERMINE THE PRECAST BEARING BLOCK HEIGHT ASSUMING 1/4" GROUT AT THE BOTTOM OF THE BEARING BLOCK.

GROUT 1/4" BENEATH PRECAST ELEMENT.

**PRECAST BEARING
BLOCK DETAILS**



**BUREAU OF
STRUCTURES**

APPROVED: *Laura Shadewald* DATE: 1-18