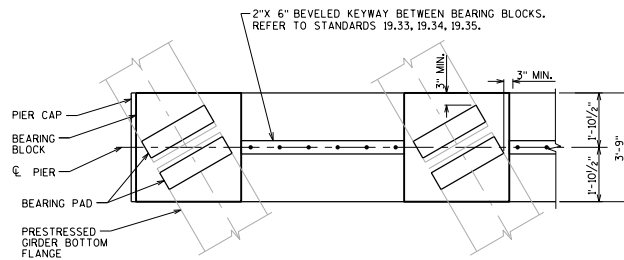
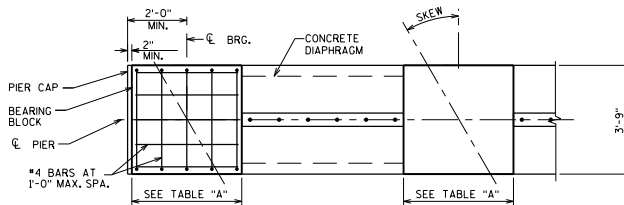


**PARTIAL TRANSVERSE SECTION
AT DIAPHRAGM PIER**

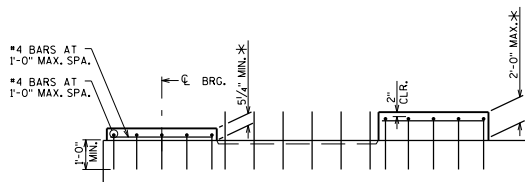
STD. 19.35 SHOWN (STD. 19.33 & 19.34 SIM.)



PLAN



PLAN



ELEVATION

DESIGNER NOTE

SEE 7.1.4.1.2 FOR ADDITIONAL PRECAST PIER GUIDANCE.


CONTRACTOR NOTES

THE CONTRACTOR SHALL FOLLOW THIS STANDARD WHEN PRECAST PIERS ARE USED AND WHEN CAST-IN-PLACE BEARING BLOCKS ARE USED IN LIEU OF PRECAST BEARING BLOCKS. SEE STANDARD 7.06 FOR ADDITIONAL NOTES AND DETAILS.

CAST-IN-PLACE CONCRETE DETAIL NOTES

CAST-IN-PLACE BEARING BLOCK DETAILS SHALL ONLY BE USED WHEN PLANS INDICATE ALLOWANCE FOR PRECAST PIERS.

* CAST-IN-PLACE HEIGHT = VARIES (5/4\"/>

CAST-IN-PLACE BEARING BLOCK DETAILS	
	BUREAU OF STRUCTURES
APPROVED: <i>Laura Shadewald</i>	DATE: 1-18