



# Wisconsin Department of Transportation

January 29, 2015

**Division of Transportation Systems Development**

Bureau of Project Development  
 4802 Sheboygan Avenue, Rm 601  
 P O Box 7916  
 Madison, WI 53707-7916

Telephone: (608) 266-1631  
 Facsimile (FAX): (608) 266-8459

**NOTICE TO ALL CONTRACTORS:**

**Proposal #5: ID 5310-02-70, WISC 2015 084**  
**Spring Green – Madison**  
**CTH KP to Westview Ct,**  
**Village of Cross Plains**  
**USH 14**  
**Dane County**

**ID 5310-02-73**  
**Spring Green – Madison**  
**CTH KP to Westview Ct,**  
**Village of Cross Plains**  
**USH 14**  
**Dane County**

**Letting of February 10, 2015**

This is Addendum No. 2, which provides for the following:

**Special Provisions**

Revised Special Provisions	
Article No.	Description
8	Utilities
73	Traffic Signal Preempt Intersection of USH 14/CTH P, Item SPV.0060.46
98	Maintaining and Removing Temporary Traffic Signal (USH 14 and CTH P), Item SPV.0105.26; (CTH P and Bourbon Road), Item SPV.0105.27; (CTH KP and Bourbon Road), Item SPV.0105.28; and (Hillebrand Drive and Bourbon Road), Item SPV.0105.29

Added Special Provisions	
Article No.	Description
108	Removing Concrete Sign Base

**Schedule of Items**

Revised Bid Item Quantities					
Bid Item	Item Description	Unit	Old Quantity	Revised Quantity	Proposal Total
634.0614	Posts Wood 4x6-Inch X 14-FT	EACH	82	77	77
634.0616	Posts Wood 4x6-Inch X 16-FT	EACH	37	35	35

<b>Added Bid Item Quantities</b>					
Bid Item	Item Description	Unit	Old Quantity	Revised Quantity	Proposal Total
SPV.0105.32	Removing Concrete Sign Base	LS	0	1	1

<b>Deleted Bid Item Quantities</b>					
Bid Item	Item Description	Unit	Old Quantity	Revised Quantity	Proposal Total
661.0200.01	Temporary Traffic Signals for Intersections USH 14 with Brewery Road	LS	1	0	0
SPV.0060.45	Traffic Signal Preempt Intersection of USH 14 / Brewery Road	EACH	1	0	0
SPV.0105.23	Removing Traffic Signals CTH P & USH 14 Intersection	LS	1	0	0

### Plan Sheets

<b>Revised Plan Sheets</b>	
Plan Sheet	Plan Sheet Title (brief description of changes to sheet)
	ID 5310-02-70
132	Permanent Signing (adjusted sign locations)
134	Permanent Signing (adjusted sign locations)
135	Permanent Signing (adjusted sign locations)
136	Permanent Signing (adjusted sign locations)
137	Permanent Signing (adjusted sign locations)
139	Permanent Signing (adjusted sign locations)
207	Traffic Control (added note regarding temporary signals)
254	Miscellaneous Quantities (adjusted quantity)
255	Miscellaneous Quantities (adjusted quantity)
256	Miscellaneous Quantities (adjusted quantity)
266	Miscellaneous Quantities (adjusted quantity)
269	Miscellaneous Quantities (adjusted quantity)

<b>Added Plan Sheets</b>	
Plan Sheet	Plan Sheet Title (brief description of changes to sheet)
165A	Temporary Signal Plan USH 14 and CTH P (As-built from 2014 construction)
165B	Permanent Signal Plan USH 14 and CTH P (As-built from 2014 construction)

The responsibility for notifying potential subcontractors and suppliers of these changes remains with the prime contractor.

Sincerely,

*Mike Coleman*

Proposal Development Specialist  
Proposal Management Section

## ADDENDUM NO. 2

ID 5310-02-70

January 29, 2015

### Special Provisions

#### 8. Utilities.

*Replace entire article language with the following:*

This contract comes under the provision of Administrative Rule Trans 220. On this project Administrative Rule TRANS 220 utility coordination process was followed. 107-065 (20080501)

There are underground and overhead utility facilities located within the project limits. The contractor shall coordinate his construction activities with a call to Diggers Hotline and/or a direct call to the utilities that have facilities in the area as required per statutes. The contractor shall use caution to insure the integrity of the underground facilities and shall maintain code clearances from overhead facilities at all times.

#### **Madison Gas & Electric – Gas**

Madison Gas & Electric has a gas line located within the project limits. Work is anticipated to begin on March 2, 2015 and is anticipated to take 50 working days to complete. Work will be completed prior to and during construction.

Madison Gas & Electric will replace existing gas facilities entirely. Installation will be primarily along the north side of USH 14 from the west project limits to the east project limits. The gas line would be under the sidewalk on the north side of the right-of-way approximately three feet off the right-away-line. From STA 105+00 to STA 107+30, a second line will be located on the south side of USH 14.

Madison Gas & Electric anticipates that the relocation will begin on both the west and east ends of the project and proceed toward the middle. The current status of relocations and relocation drawings may be obtained from the contact below.

Contact for MG&E Gas – Steve Beversdorf, 133 S. Blair St. Madison, WI, 53788, Cell (608) 444-9620, E-mail [SBeversdorf@mge.com](mailto:SBeversdorf@mge.com)

#### **Madison Gas & Electric – Electric**

Madison Gas & Electric has over head and underground electric facilities located within the project limits. Work is anticipated to begin in late February/early March of 2015 and will take approximately 60 working days to complete. Work will be completed prior to and during construction.

Madison Gas & Electric will be removing the poles and overhead wire from Market Street to the west side of Brewery Creek. At Brewery Creek a temporary overhead line will be built south of USH 14 to accommodate construction of the new bridge. MG&E desires to construct the temporary overhead line in the location of the building to be removed at 2404 Main Street. MG&E requests the building be removed prior to the temporary relocation.

There is an underground electric cable at approximately STA 137+20 that crosses USH 14 that will be abandoned. Underground facilities will be installed on the south side of USH 14 from STA 104+75 to STA 130+75; on the north side of USH 14 from STA 118+25 to STA 121+25; on the north side of USH 14 from STA 124+50 to STA 126+50 where it crosses under USH 14 to the south. Work north of USH 14 at CTH P will be completed in 2014, prior to construction. There will

be a transformer set on village right-of-way with pull boxes in the sidewalk, and conduit running under the sidewalk.

The current status of relocations and relocation drawings may be obtained from the contact below.

Contact for MG&E Electric – Rich Parker, 133 S. Blair St., Madison, WI, 53788, Cell (608) 444-9619, E-mail [RParker@mge.com](mailto:RParker@mge.com).

### **Charter Communications**

Charter Communications has overhead coaxial cable and fiber attached to MG&E poles along the south side of USH 14 from CTH KP to Mill Street. Relocation of fiber and coaxial cable will be done in conjunction with the relocation of MG&E electric poles. For more information refer to “Madison Gas & Electric – Electric” portion of the specials.

Charter has removed a portion of the facilities between CTH KP and Mill Street. The crossing at Mill Street has been removed.

Work on the segment from CTH P to the eastern end of the project is anticipated to begin in February 2015 and will take approximately 120 working days to complete. Work will be completed prior to and during construction.

Aerial coaxial cable will be moved to underground with MG&E Electric in a joint trench starting at CTH KP along the south right-of-way continuing to Mill Street. Aerial coaxial cable crossing at Mill Street will be relocated. Aerial coaxial cable at Caesar Street will be relocated.

The current status of relocations and relocation drawings may be obtained from the contact below.

Contact for Charter Communication is Randy Lettman, 2701 Daniels St., Madison, WI, 53718, Cell (608) 575-6415, E-mail [randall.lettman@charter.com](mailto:randall.lettman@charter.com).

### **TDS Telecom**

TDS has both aerial and underground facilities located within the project limits. Work has begun and is anticipated to take approximately 90 working days to complete.

TDS has relocated much of the existing facility between Caesar Street and the east end of the project. They anticipate completing this work by mid-March 2015.

The facilities between CTH KP and Wilson Street will be relocated in conjunction with the MG&E overhead electric and will occur during construction.

Some coordination may entail the lowering of the facilities in place during construction.

Beginning at the west end, STA 104+50 to 127+00, TDS will place new buried facilities in the south right-of-way area jointly with others, currently MG&E and Charter. STA 104+50 to 127+00, TDS will remove aerial facilities.

STA 127+00 to 132+75 TDS aerial facilities will be removed, replaced with the Lagoon Street construction project in 2014. At STA 137+00 TDS will cross USH 14 with an aerial cable on existing MG&E poles.

STA 140+00 (Jovina Street) to STA 147+25, TDS will abandon an existing manhole conduit duct package, this duct package also hangs under the existing bridge at STA 144+00. TDS will retain in place a manhole (MH5) at STA 147+25, left within CTH P.

TDS has placed new facilities from MH5 to the northwest area on the north right-of-way to STA 145+75. This new facility serves an existing aerial crossing on MG&E poles at STA 146+00.

From MH5 northeasterly along CTH P, TDS will retain the existing duct package consisting of 6-4" concrete encased conduits and 2 direct buried 600 pair copper cables extending along CTH P beyond the limits of this project.

From MH5, 147+25 Easterly along USH 14 right-of-way, TDS will abandon a buried cable to STA 164+00.

At STA 150+65, TDS will place by directional drilling, a new conduit across USH 14 from right-of-way to right-of-way. Facilities will be built beyond the limits of USH 14.

At STA 160+90 TDS, will place by directional drilling, new conduit across USH 14 from right-of-way to right-of-way, and parallel along the new south right-of-way line easterly to STA 161+50.

At STA 161+50 and easterly, TDS will attach to existing MG&E poles and extend to beyond the easterly limits of the project.

At STA 167+00 TDS will cross the right-of-way with directional drilling and placement of conduit.

TDS will place new facilities on the north right-of-way from Westview Court east to STA 167+00. TDS will place new facilities on the south right-of-way from STA 167+00 easterly to STA 167+50.

At STA 147+25, MH5 shall remain along with the cable and conduit package going north along CTH P to the northeast. Coordination may entail the lowering of the facilities in place during construction.

The current status of relocations and relocation drawings may be obtained from the contact below.

Contact for TDS is Jerry Myers, 525 Junction Rd., Madison, WI, Cell (608)-279-7104, E-mail [jerry.myers@tdstelecom.com](mailto:jerry.myers@tdstelecom.com).

### **Galactic Wind**

Galactic Wind will be installing underground conduit within the project limits. Work will take place during construction and is anticipated to take approximately 4 working days to complete.

Galactic Wind, LLC, will be installing (1) 12w HDPE conduit and (2) 4" Schedule 40 PVC conduits across USH 14. The conduits crossing USH 14 will be a continuation of conduits previously installed from the south side of Black Earth Creek (west side of CTH P) north to a 12'x6'x7' pre-cast concrete manhole installed at the same time as the prior installed conduits. The new conduits crossing USH 14 will begin at the previously installed concrete manhole and extend to the north side of USH 14 on the west side of CTH P.

The work related to conduit installation must be coordinated with other utility work taking place within the USH 14 roadway alignment. Conduit crosses the highway at an acute angle and at a minimum depth of 48" to the top of the conduit. Interference with other utilities is anticipated to be minimal.

Contact for Galactic Wind is Ed Englert, The Morse Group, 1390 Gateway Blvd., Beloit, WI 53511, Cell (815) 378-6125, E-Mail [eenglert@themorsegroup.com](mailto:eenglert@themorsegroup.com).

**Village of Cross Plains (Water)** has underground facilities located within the project limits. Relocation of the underground facilities will be accomplished as part of contract 5310-02-73.

Coordinate operations with the Village of Cross Plains. Contact Jerry Gray (608) 798-3241 x109 or cell (608) 235-1054, E-Mail [jerry@cross-plains.wi.us](mailto:jerry@cross-plains.wi.us)

**Village of Cross Plains (Sanitary Sewer)** has underground facilities located within the project limits. Relocation of the underground facilities will be accomplished as part of contract 5310-02-73.

Coordinate operations with the Village of Cross Plains. Contact Jerry Gray (608) 798-3241 x109 or cell (608) 235-1054, E-Mail [jerry@cross-plains.wi.us](mailto:jerry@cross-plains.wi.us)

**73. Traffic Signal Preempt Intersection of USH 14/Brewery Road, Item SPV.0060.45; Traffic Signal Preempt Intersection of USH 14/CTH P, Item SPV.0060.46.**

*Replace article name and entire article language with the following:*

**73. Traffic Signal Preempt Intersection of USH 14/CTH P, Item SPV.0060.46.A Description**

**A Description**

This work shall consist of furnishing and installing Opticom brand optical signal preempt equipment for the signalized intersection.

**B Materials**

Furnish the following:

1. Model 454 discriminator for one signal intersection, one total
2. Model 711 detectors, four total
3. Model 760 card rack for each intersection, one total
4. Model 138 detector cable as necessary
5. Cables and auxiliary equipment as necessary for a complete operating system

**C Construction**

Detectors shall be installed on the top horizontal member of signal trombone arms or monotube arms when available, three feet inboard from the signal head. When trombone arms are not available, the detectors shall be installed on the side of streetlight poles, 22 feet from bottom of pole. The detectors will be on the far side of the intersection, and shall be aimed at approaching traffic. Detector cable shall be installed from the detector to the control cabinet at each intersection, using the shortest path. All installation methods shall be consistent with the manufacturer's instructions.

**D Measurement**

The department will measure Traffic Signal Preempt by each individual installation acceptably completed.

**E Payment**

The department will pay for measured quantities at the contract unit price under the following bid item:

ITEM NUMBER	DESCRIPTION	UNIT
SPV.0060.46	Traffic Signal Preempt Intersection of USH 14/CTH P	Each

Payment is full compensation for furnishing, delivering and installing detectors and cable, discriminators, card racks, cables and miscellaneous materials, labor, tools, and equipment to complete the work.

**98. Maintaining and Removing Temporary Traffic Signal (USH 14 and CTH P), Item SPV.0105.26; (CTH P and Bourbon Road), Item SPV.0105.27; (CTH KP and Bourbon Road), Item SPV.0105.28; and (Hillebrand Drive and Bourbon Road), Item SPV.0105.29.**

*Replace entire article language with the following:*

**A Description**

This special provision describes maintaining and removing temporary traffic signals installed under a separate project, as shown in the plans.

**B (Vacant)**

**C Construction**

Comply with section 661 of the standard specifications.

The contractor shall take ownership of previously installed temporary signal equipment upon removal. The control cabinets, video detection, and communications equipment will remain property of the department.

**D Measurement**

The department will measure Maintaining and Removing Temporary Traffic Signal as a single complete lump sum unit of work, acceptably completed.

**E Payment**

The department will pay for measured quantities at the contract unit price under the following bid item:

ITEM NUMBER	DESCRIPTION	UNIT
SPV.0105.26	Maintaining and Removing Temporary Traffic Signal (USH 14 and CTH P)	LS
SPV.0105.27	Maintaining and Removing Temporary Traffic Signal (CTH P and Bourbon Road)	LS
SPV.0105.28	Maintaining and Removing Temporary Traffic Signal (CTH KP and Bourbon Road)	LS
SPV.0105.29	Maintaining and Removing Temporary Traffic Signal (Hillebrand Drive and Bourbon Road)	LS

Payment is full compensation for maintaining, salvaging and removing equipment, including all required materials, tools, and supplies; for all labor; for clean-up and waste disposal; and for all incidentals necessary to complete this item of work.

**108. Removing Concrete Sign Base, Item SPV.0105.32.**

**A Description**

This special provision describes removing an existing concrete sign base for a commercial property.

**B (Vacant)**

**C Construction**

Arrange for the removal of the sign base after receiving approval from the engineer that the existing sign has been removed and power and communications are disconnected.

The contractor shall remove the existing concrete sign base at the southeast corner of parcel 119. Saw cut and remove conduit or abandon in place. Conduit may be abandoned in place only if it does not interfere with new construction or present a risk of damage to newly constructed items.

**D Measurement**

The department will measure Removing Concrete Sign Base as a single lump sum unit of work for the intersection, acceptably completed.

**E Payment**

The department will pay for measured quantities at the contract unit price under the following bid item:

ITEM NUMBER	DESCRIPTION	UNIT
SPV.0105.32	Removing Concrete Sign Base	LS

Payment is full compensation for excavating, removing and disassembling, scrapping of materials; disposing of scrap material; and for furnishing all labor, tools, equipment, and incidentals necessary to complete the contract work.

**Schedule of Items**

Attached, dated January 29, 2014, are the revised Schedule of Items Pages 14, and 25 – 36.

**Plan Sheets**

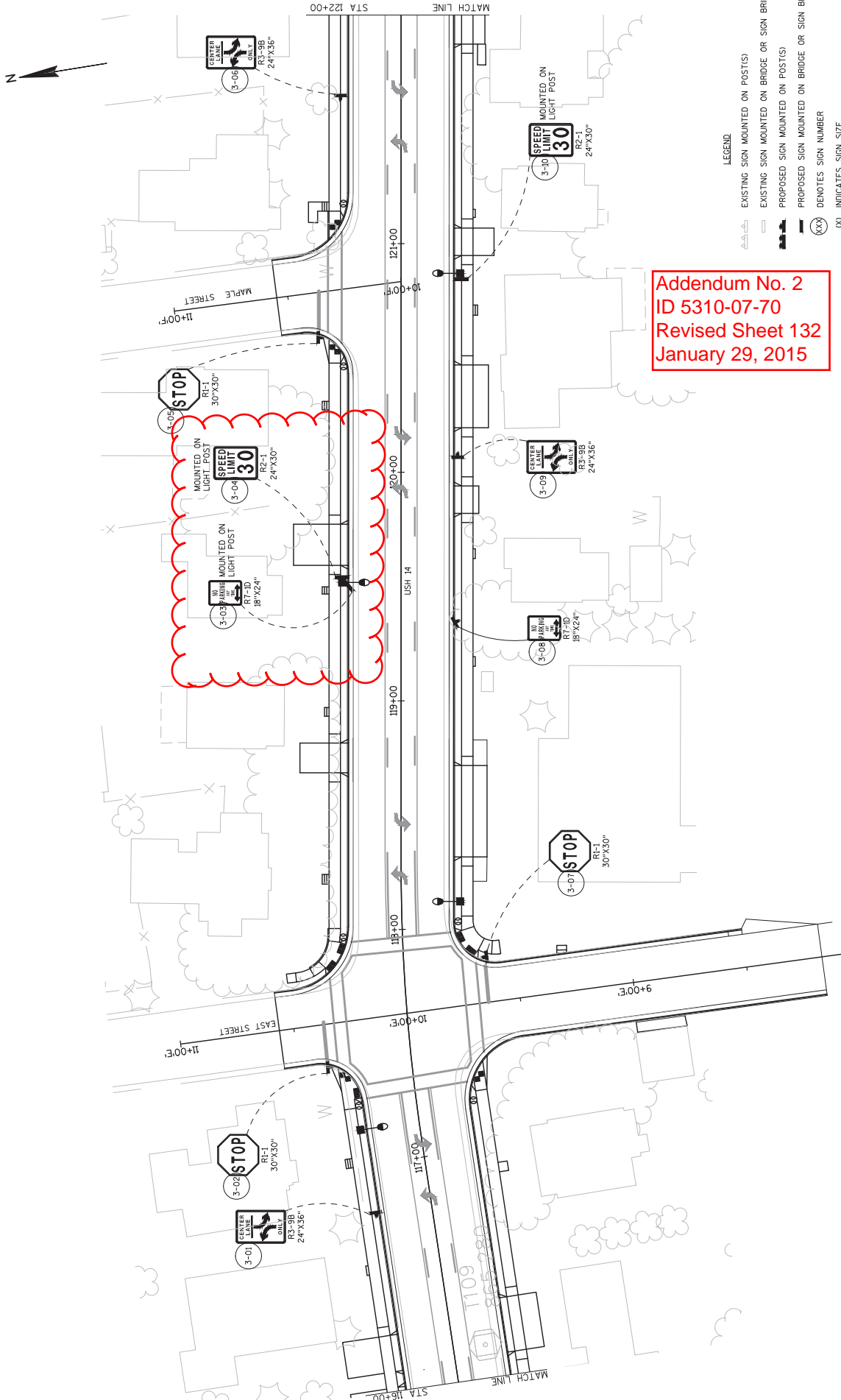
The following 8½ x 11-inch sheets are attached and made part of the plans for this proposal:  
Revised:

ID 5310-02-70: 132, 134, 135, 136, 137, 139, 165A, 165B, 207, 254, 255, 256, 266, 269.

ID 5310-02-73: None.

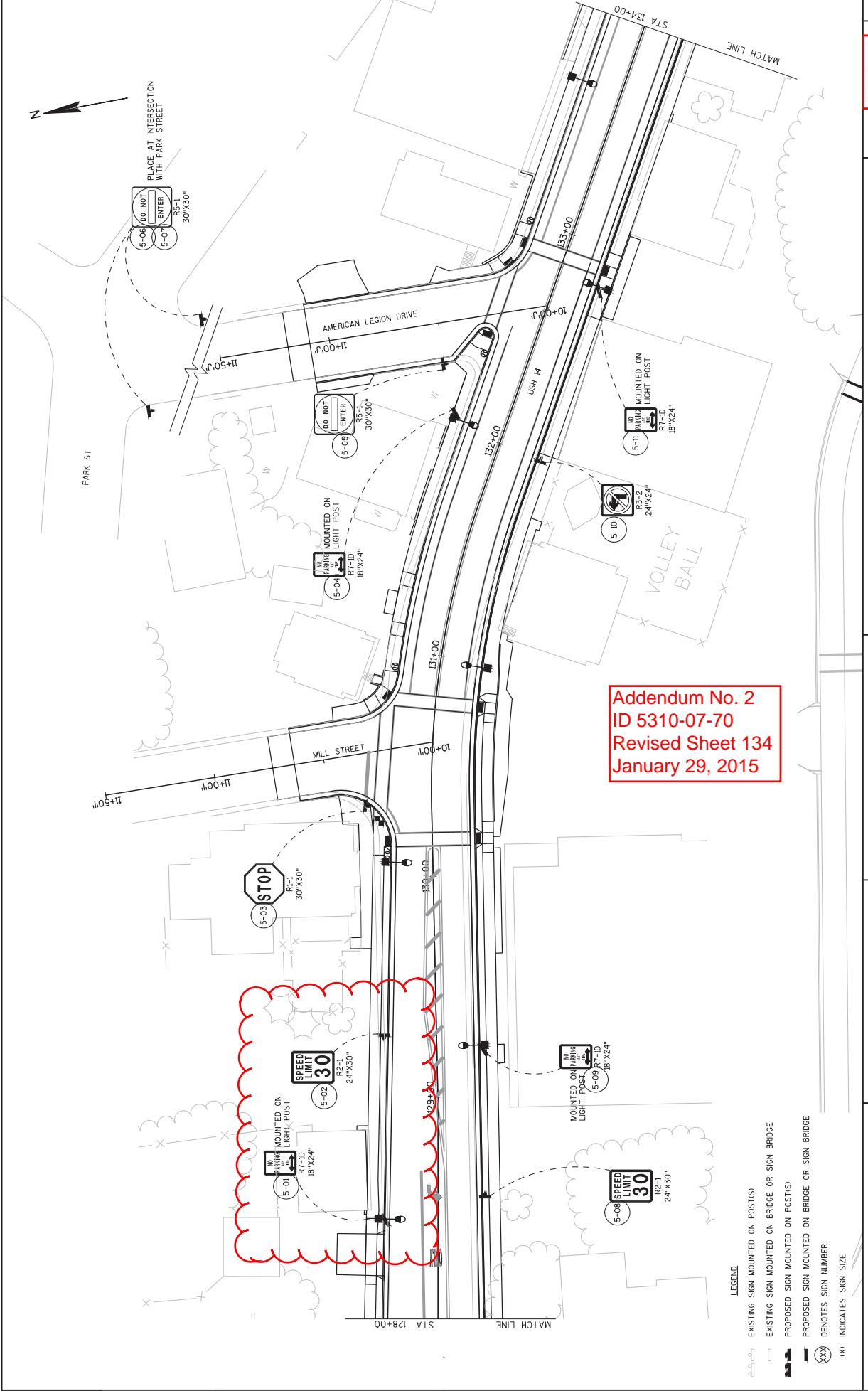
END OF ADDENDUM





Addendum No. 2  
 ID 5310-07-70  
 Revised Sheet 132  
 January 29, 2015

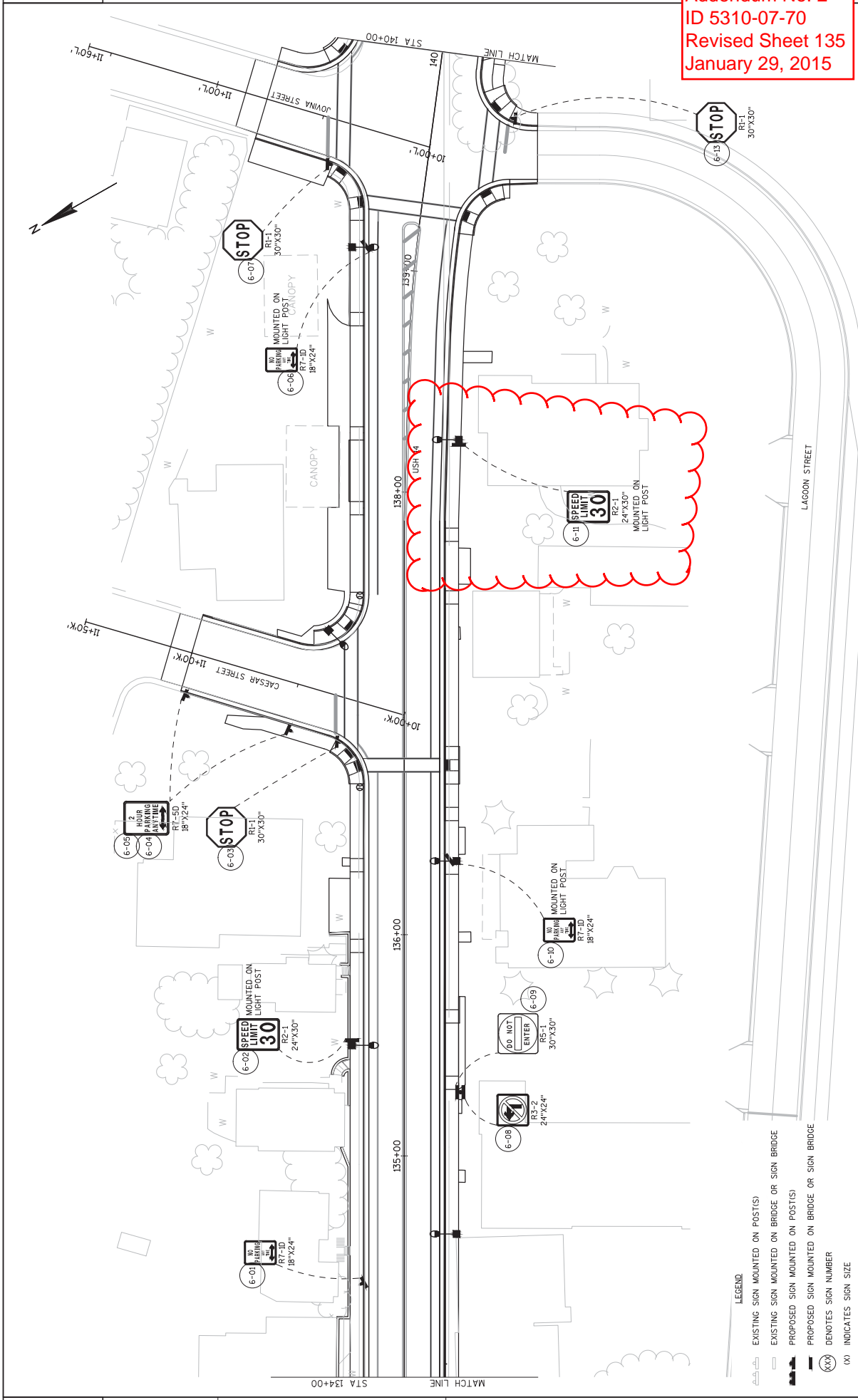
- LEGEND**
- EXISTING SIGN MOUNTED ON POST(S)
  - EXISTING SIGN MOUNTED ON BRIDGE OR SIGN BRIDGE
  - PROPOSED SIGN MOUNTED ON POST(S)
  - PROPOSED SIGN MOUNTED ON BRIDGE OR SIGN BRIDGE
  - XXX DENOTES SIGN NUMBER
  - ∅ INDICATES SIGN SIZE



Addendum No. 2  
 ID 5310-07-70  
 Revised Sheet 134  
 January 29, 2015

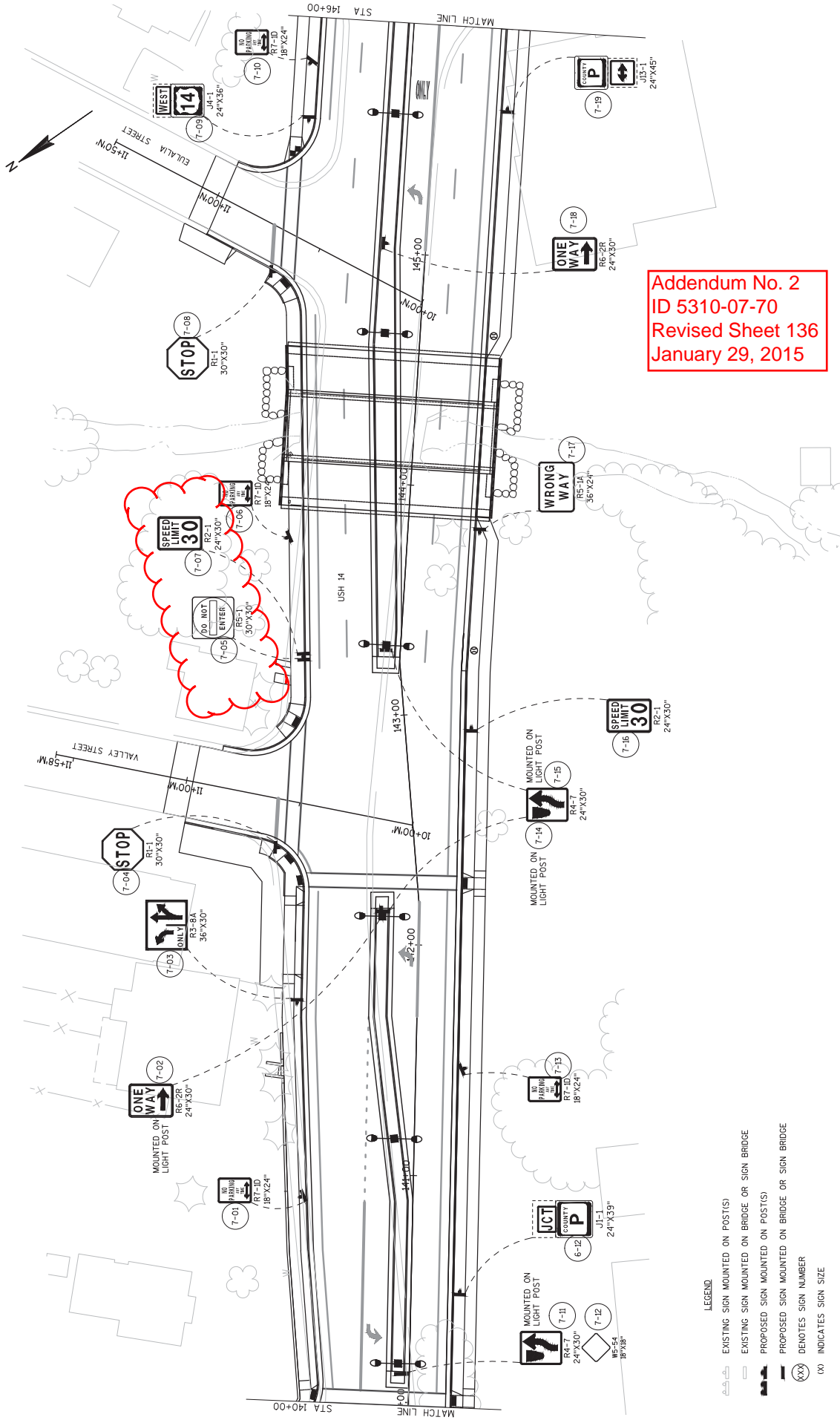
- LEGEND**
- EXISTING SIGN MOUNTED ON POST(S)
  - EXISTING SIGN MOUNTED ON BRIDGE OR SIGN BRIDGE
  - PROPOSED SIGN MOUNTED ON POST(S)
  - PROPOSED SIGN MOUNTED ON BRIDGE OR SIGN BRIDGE
  - DENOTES SIGN NUMBER
  - INDICATES SIGN SIZE

Addendum No. 2  
ID 5310-07-70  
Revised Sheet 135  
January 29, 2015



- LEGEND
- EXISTING SIGN MOUNTED ON POST(S)
  - EXISTING SIGN MOUNTED ON BRIDGE OR SIGN BRIDGE
  - PROPOSED SIGN MOUNTED ON POST(S)
  - PROPOSED SIGN MOUNTED ON BRIDGE OR SIGN BRIDGE
  - (XX) DENOTES SIGN NUMBER
  - (X) INDICATES SIGN SIZE

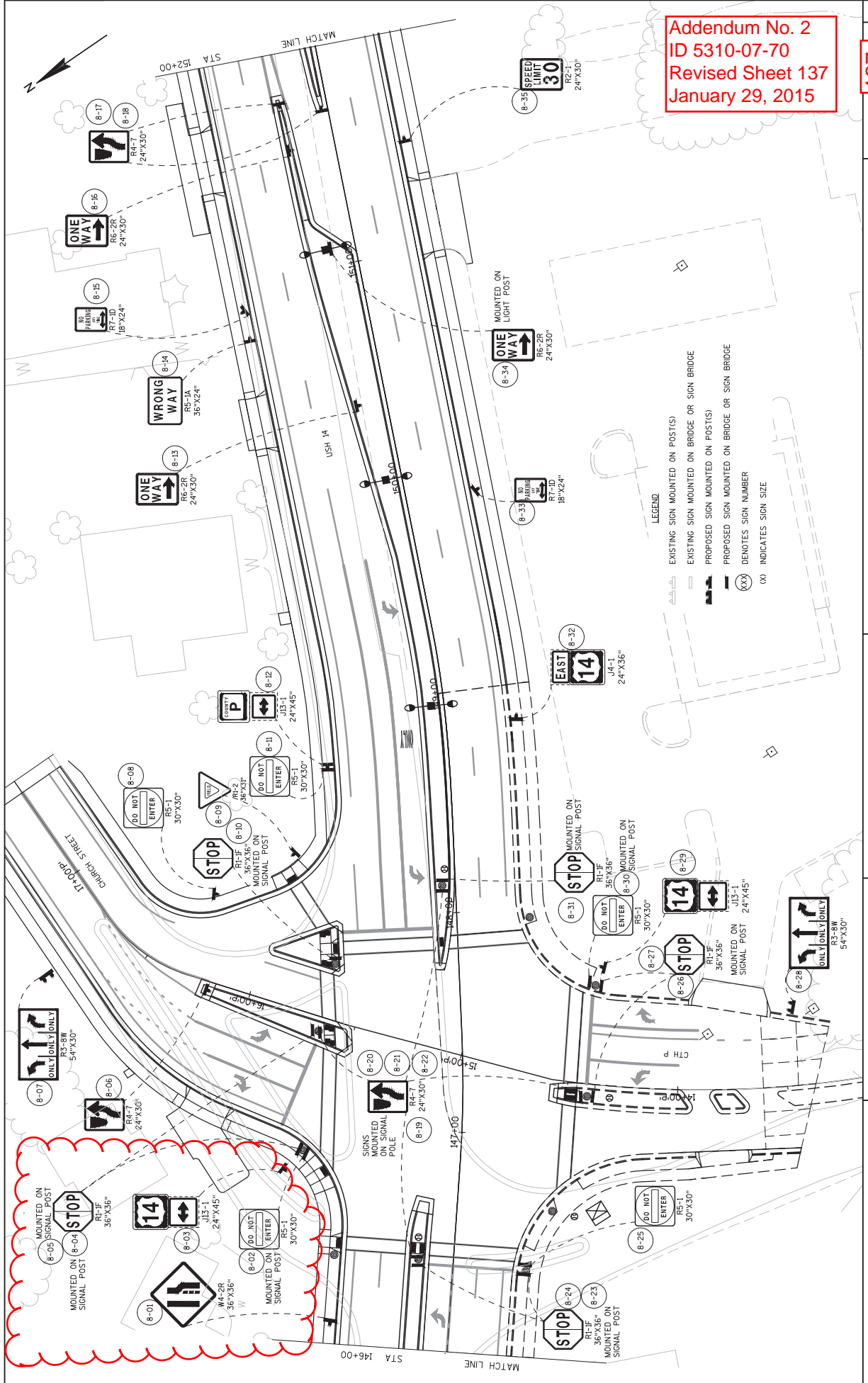
PROJECT NO: 5310-02-70  
 COUNTY: DANE  
 HWY: U.S.H. 14  
 PERMANENT SIGNING  
 SHEET 135  
 PLOT DATE : 1/26/2015 9:45 AM  
 PLOT BY : DAVID YAHKE  
 PLOT NAME : .....  
 FILE NAME : X:\3230900\113688.02\TECH\CAD\53100200\SHEETPLAN\023202\_FIS-NEW.DWG  
 WSDOT/CADD/SHEET 42



Addendum No. 2  
 ID 5310-07-70  
 Revised Sheet 136  
 January 29, 2015

- LEGEND**
- EXISTING SIGN MOUNTED ON POST(S)
  - EXISTING SIGN MOUNTED ON BRIDGE OR SIGN BRIDGE
  - PROPOSED SIGN MOUNTED ON POST(S)
  - PROPOSED SIGN MOUNTED ON BRIDGE OR SIGN BRIDGE
  - DENOTES SIGN NUMBER
  - INDICATES SIGN SIZE

PROJECT NO: 5310-02-70 FILE NAME : X:\3230900\113688.02\TECH\CAD\53100200\SHEETS\LAN\023202_FS-NEW.DWG	COUNTY: DANE PLOT DATE : 1/26/2015 9:45 AM PLOT BY : DAVID YAHNE	PERMANENT SIGNING PLOT NAME : ..... PLOT SCALE : 1:140...REF	SHEET <b>136</b> E WSDOT/CADD/SHEET 42
---	--	--	---



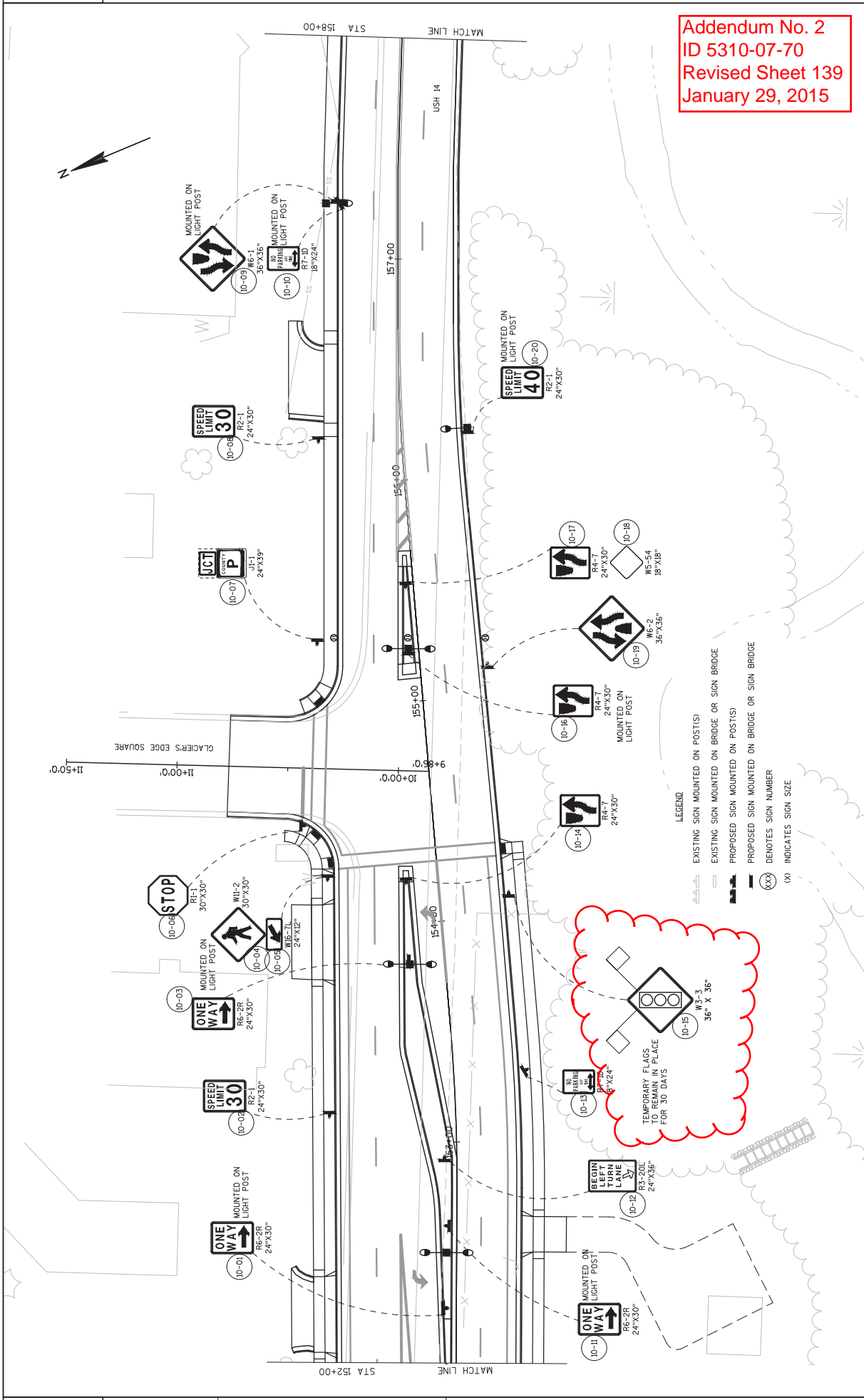
**Addendum No. 2**  
**ID 5310-07-70**  
**Revised Sheet 137**  
**January 29, 2015**

SHEET **137** OF 140  
 WISDOT/CADD SHEET 42

**2**

**2**

FILE NAME : X:\3230900\113668-02\TECH\CADD\53100200\53100200\02\03202.PS-NEW.DWG



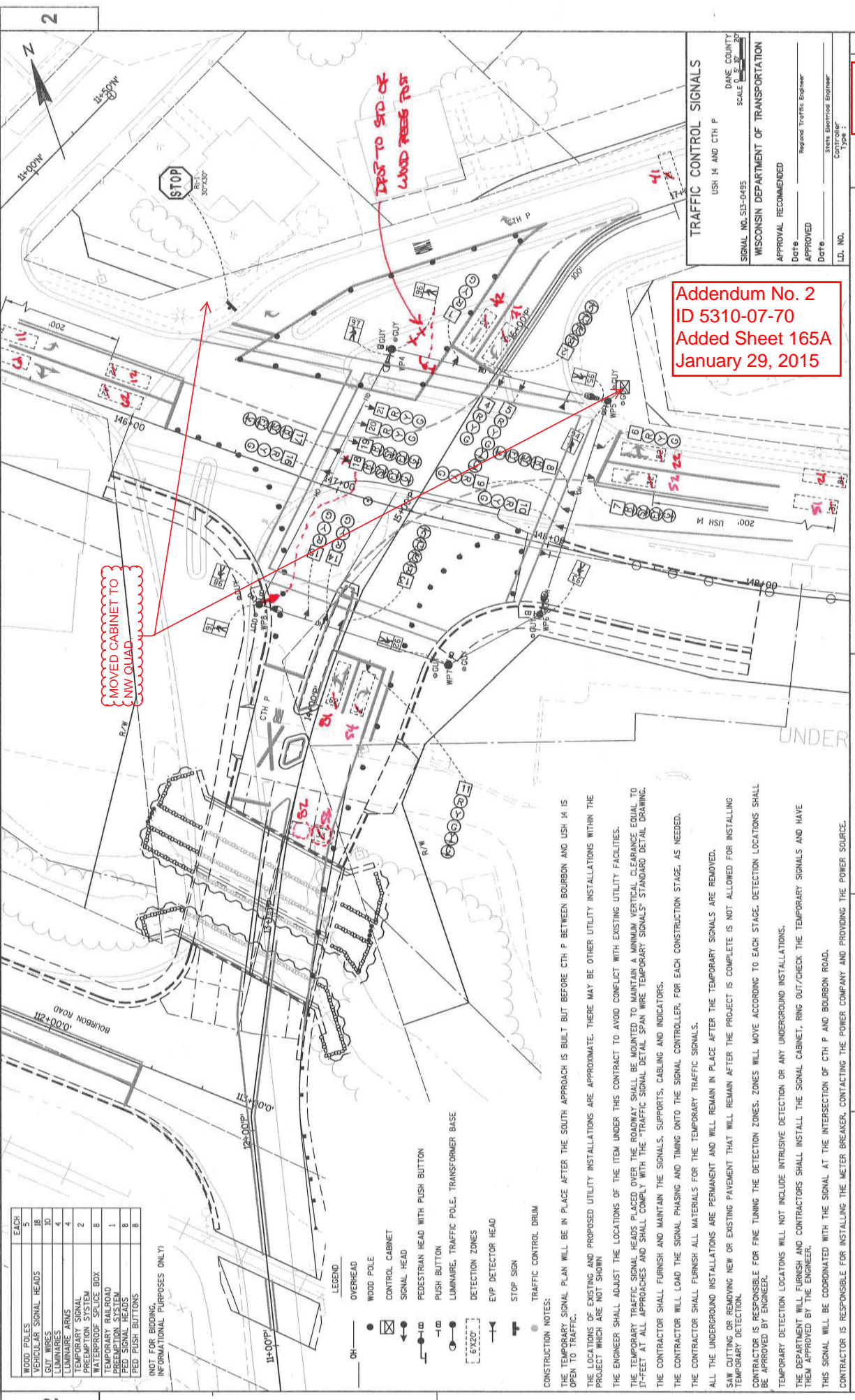
Addendum No. 2  
 ID 5310-07-70  
 Revised Sheet 139  
 January 29, 2015

PROJECT NO: 5310-02-70 HWY: USH 14 COUNTY: DANE	PERMANENT SIGNING PLOT BY: DAVID YAHKE PLOT DATE: 1/26/2015 9:46 AM	SHEET <b>139</b> E	WSDOT/CADD/SHEET 42 PLOT SCALE: 1:140...REF
---	---	-----------------------	--

- LEGEND**
- EXISTING SIGN MOUNTED ON POST(S)
  - EXISTING SIGN MOUNTED ON BRIDGE OR SIGN BRIDGE
  - PROPOSED SIGN MOUNTED ON POST(S)
  - PROPOSED SIGN MOUNTED ON BRIDGE OR SIGN BRIDGE
  - (XXX) DENOTES SIGN NUMBER
  - (XX) INDICATES SIGN SIZE

(10-15) W3-3  
 36" X 36"  
 TEMPORARY FLAGS  
 TO REMAIN IN PLACE  
 FOR 30 DAYS





ITEM	EACH
WOOD POLES	5
VEHICULAR SIGNAL HEADS	18
CABINETS	10
LUMINAIRE	4
LUMINAIRE ARMS	2
TEMPORARY SIGNAL PREEMPTION SYSTEM	2
WATERPROOF SPICE BOX	8
TEMPORARY RAILROAD PREEMPTION SYSTEM	1
TRAFFIC SIGNAL SYSTEM	8
FED PUSH BUTTONS	8

(NOT FOR BIDDING, INFORMATIONAL PURPOSES ONLY)

- LEGEND**
- OH — OVERHEAD
  - WOOD POLE
  - ☒ CONTROL CABINET
  - ◀ SIGNAL HEAD
  - |—|— PEDESTRIAN HEAD WITH PUSH BUTTON
  - |—|— PUSH BUTTON
  - LUMINAIRE, TRAFFIC POLE, TRANSFORMER BASE
  - ⊡ DETECTION ZONES
  - ⊡ EWP DETECTOR HEAD
  - ⊡ STOP SIGN
  - TRAFFIC CONTROL DRUM

**CONSTRUCTION NOTES:**

THE TEMPORARY SIGNAL PLAN WILL BE IN PLACE AFTER THE SOUTH APPROACH IS BUILT BUT BEFORE CTH P BETWEEN BOURBON AND USH 14 IS OPEN TO TRAFFIC.

THE LOCATIONS OF EXISTING AND PROPOSED UTILITY INSTALLATIONS ARE APPROXIMATE. THERE MAY BE OTHER UTILITY INSTALLATIONS WITHIN THE PROJECT WHICH ARE NOT SHOWN.

THE ENGINEER SHALL ADJUST THE LOCATIONS OF THE ITEM UNDER THIS CONTRACT TO AVOID CONFLICT WITH EXISTING UTILITY FACILITIES.

THE TEMPORARY TRAFFIC SIGNAL HEADS PLACED OVER THE ROADWAY SHALL BE MOUNTED TO MAINTAIN A MINIMUM VERTICAL CLEARANCE EQUAL TO 17'-FEET AT ALL APPROACHES AND SHALL COMPLY WITH THE "TRAFFIC SIGNAL DETAIL SPAN WIRE TEMPORARY SIGNALS" STANDARD DETAIL DRAWING.

THE CONTRACTOR SHALL FURNISH AND MAINTAIN THE SIGNALS, SUPPORTS, CABLING AND INDICATORS.

THE CONTRACTOR WILL LOAD THE SIGNAL PHASING AND TIMING ONTO THE SIGNAL CONTROLLER, FOR EACH CONSTRUCTION STAGE, AS NEEDED.

THE CONTRACTOR SHALL FURNISH ALL MATERIALS FOR THE TEMPORARY TRAFFIC SIGNALS.

ALL THE UNDERGROUND INSTALLATIONS ARE PERMANENT AND WILL REMAIN IN PLACE AFTER THE TEMPORARY SIGNALS ARE REMOVED.

SAW CUTTING OR REMOVING NEW OR EXISTING PAVEMENT THAT WILL REMAIN AFTER THE PROJECT IS COMPLETE IS NOT ALLOWED FOR INSTALLING TEMPORARY DETECTION.

CONTRACTOR IS RESPONSIBLE FOR FINE TUNING THE DETECTION ZONES. ZONES WILL MOVE ACCORDING TO EACH STAGE. DETECTION LOCATIONS SHALL BE APPROVED BY ENGINEER.

TEMPORARY DETECTION LOCATIONS WILL NOT INCLUDE INTRUSIVE DETECTION OR ANY UNDERGROUND INSTALLATIONS.

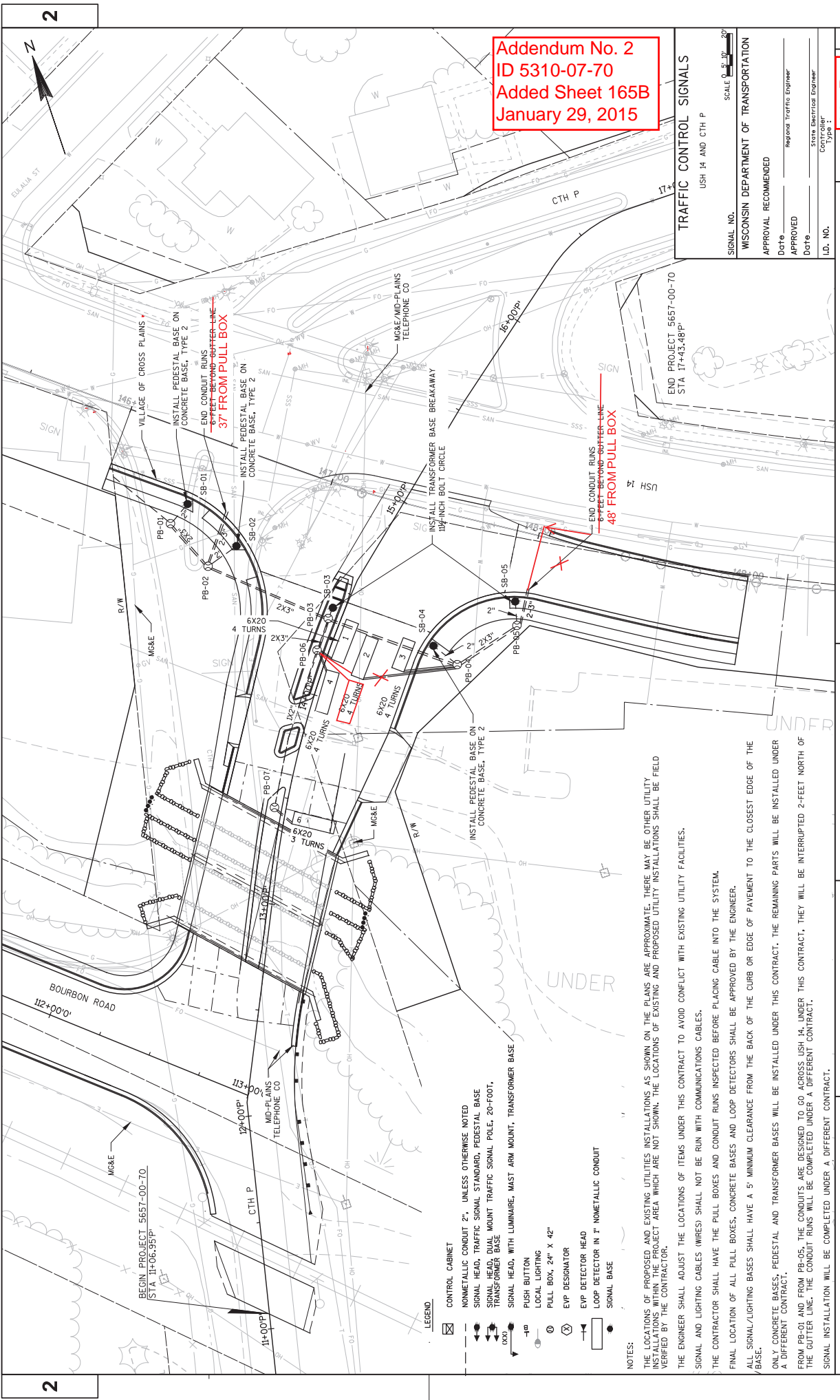
THE DEPARTMENT WILL FURNISH AND CONTRACTORS SHALL INSTALL THE SIGNAL CABINET, RING OUT/CHECK THE TEMPORARY SIGNALS AND HAVE THEM APPROVED BY THE ENGINEER.

THIS SIGNAL WILL BE COORDINATED WITH THE SIGNAL AT THE INTERSECTION OF CTH P AND BOURBON ROAD.

CONTRACTOR IS RESPONSIBLE FOR INSTALLING THE METER BREAKER, CONTACTING THE POWER COMPANY AND PROVIDING THE POWER SOURCE.

**Addendum No. 2**  
**ID 5310-07-70**  
**Added Sheet 165A**  
**January 29, 2015**

**TRAFFIC CONTROL SIGNALS**  
 USH 14 AND CTH P  
 DANE COUNTY  
 SIGNAL NO. S13-0495  
 SCALE: 0.5" = 20'  
 WISCONSIN DEPARTMENT OF TRANSPORTATION  
 APPROVAL RECOMMENDED  
 Design: Regional Traffic Engineer  
 APPROVED: State Electrical Engineer  
 Date: \_\_\_\_\_  
 I.D. NO. \_\_\_\_\_  
 Type: \_\_\_\_\_



Addendum No. 2  
 ID 5310-07-70  
 Added Sheet 165B  
 January 29, 2015

**TRAFFIC CONTROL SIGNALS**  
 USH 14 AND CTH P  
 SIGNAL NO. \_\_\_\_\_ SCALE 0.5" = 30' - 20'  
 WISCONSIN DEPARTMENT OF TRANSPORTATION  
 APPROVAL RECOMMENDED  
 Date: \_\_\_\_\_ Regional Traffic Engineer  
 Date: \_\_\_\_\_ State Electrical Engineer  
 ID. NO. \_\_\_\_\_ Controller Type: \_\_\_\_\_

SHEET **165B**  
 E

PERMANENT SIGNAL PLAN USH 14 AND CTH P  
 PLOT NAME : \_\_\_\_\_ PLOT BY : DAVID YAHNKE  
 PLOT DATE : 9/12/2014 11:20 AM  
 PLOT SCALE : 1" = 40' -XREF

COUNTY: DANE

PROJECT NO: 5310-02-74/5657-00-70 HWY: USH 14  
 FILE NAME : X:\3233\ID 5310-02-70  
 NYNCTH P\024002.SP.DWG

- LEGEND**
- ☒ CONTROL CABINET
  - NONMETALLIC CONDUIT 2", UNLESS OTHERWISE NOTED
  - SIGNAL HEAD, TRAFFIC SIGNAL STANDARD, PEDESTAL BASE
  - SIGNAL HEAD, DUAL MOUNT TRAFFIC SIGNAL POLE, 20-FOOT, TRANSFORMER BASE
  - SIGNAL HEAD, WITH LUMINAIRE, MAST ARM MOUNT, TRANSFORMER BASE
  - PUSH BUTTON
  - LOCAL LIGHTING
  - PULL BOX, 24" X 42"
  - EVP DESIGNATOR
  - EVP DETECTOR HEAD
  - LOOP DETECTOR IN T' NONMETALLIC CONDUIT
  - SIGNAL BASE

**NOTES:**  
 THE LOCATIONS OF PROPOSED AND EXISTING UTILITIES INSTALLATIONS AS SHOWN ON THE PLANS ARE APPROXIMATE. THERE MAY BE OTHER UTILITY INSTALLATIONS WITHIN THE PROJECT AREA WHICH ARE NOT SHOWN. THE LOCATIONS OF EXISTING AND PROPOSED UTILITY INSTALLATIONS SHALL BE FIELD VERIFIED BY THE CONTRACTOR.  
 THE ENGINEER SHALL ADJUST THE LOCATIONS OF ITEMS UNDER THIS CONTRACT TO AVOID CONFLICT WITH EXISTING UTILITY FACILITIES.  
 SIGNAL AND LIGHTING CABLES (WIRES) SHALL NOT BE RUN WITH COMMUNICATIONS CABLES.  
 THE CONTRACTOR SHALL HAVE THE PULL BOXES AND CONDUIT RUNS INSPECTED BEFORE PLACING CABLE INTO THE SYSTEM.  
 FINAL LOCATION OF ALL PULL BOXES, CONCRETE BASES AND LOOP DETECTORS SHALL BE APPROVED BY THE ENGINEER.  
 ALL SIGNAL/LIGHTING BASES SHALL HAVE A 5' MINIMUM CLEARANCE FROM THE BACK OF THE CURB OR EDGE OF PAVEMENT TO THE CLOSEST EDGE OF THE BASE.  
 ONLY CONCRETE BASES, PEDESTAL AND TRANSFORMER BASES WILL BE INSTALLED UNDER THIS CONTRACT. THE REMAINING PARTS WILL BE INSTALLED UNDER A DIFFERENT CONTRACT.  
 FROM PB-01 AND FROM PB-05, THE CONDUITS ARE DESIGNED TO GO ACROSS USH 14, UNDER THIS CONTRACT, THEY WILL BE INTERRUPTED 2-FEET NORTH OF THE GUTTER LINE. THE CONDUIT RUNS WILL BE COMPLETED UNDER A DIFFERENT CONTRACT.  
 SIGNAL INSTALLATION WILL BE COMPLETED UNDER A DIFFERENT CONTRACT.

2

2





Addendum No. 2  
ID 5310-07-70  
Revised Sheet 254  
January 29, 2015

PERMANENT SIGNING TYPE II - CONTINUED

CATEGORY	SIGN #	SIGN CODE	SIGN SIZE IN	POSTS 14-FT (EACH)	WOOD 16-FT (EACH)	18-FT (EACH)	634.0616	634.0619	637.2210	637.2215	637.2230	REMARKS
							SIGNS TYPE II REFLECTIVE H (SF)	SIGNS TYPE II REFLECTIVE H FOLDING (SF)	SIGNS TYPE II REFLECTIVE (SF)			
	3-01	R3-9B	24X36	1	1		6.00					CENTER LANE LEFT TURN ONLY
	3-02	R1-1	30X30	1			5.18					STOP
	3-03	R7-1D	18X24	1			3.00					NO PARKING ANY TIME
	3-04	R2-1	24X30	1			5.00					SPEED LIMIT
	3-05	R1-1	30X30	1			6.00					STOP
	3-06	R3-9B	24X36	1	1		6.00					CENTER LANE LEFT TURN ONLY
	3-07	R1-1	30X30	1			5.18					STOP
	3-08	R7-1D	18X24	1			3.00					NO PARKING ANY TIME
	3-09	R3-9B	24X36	1	1		6.00					CENTER LANE LEFT TURN ONLY
	3-10	R2-1	24X30	1			5.00					SPEED LIMIT
	4-01	R7-1D	18X24	1			3.00					NO PARKING ANY TIME
	4-02	R1-1	30X30	1			5.18					STOP
	4-03	R3-9B	24X36	1	1		6.00					CENTER LANE LEFT TURN ONLY
	4-04	R3-9C	24X6	1			1.00			4-03		BEGIN
	4-05	R7-1D	18X24	1			3.00					NO PARKING ANY TIME
	4-06	R1-1	30X30	1			5.18					STOP
	4-07	R7-1D	18X24	1			3.00					NO PARKING ANY TIME
	4-08	R3-9D	24X36	1	1		6.00					CENTER LANE LEFT TURN ONLY
	4-09	R3-9B	24X6	1			1.00			4-10		END
	4-10	R1-1	30X30	1			5.18					STOP
	5-01	R7-1D	18X24	1			3.00					NO PARKING ANY TIME
	5-02	R2-1	24X30	1			5.00					SPEED LIMIT
	5-03	R1-1	30X30	1			5.18					STOP
	5-04	R7-1D	18X24	1			3.00					NO PARKING ANY TIME
	5-05	R5-1	30X30	1			6.25					DO NOT ENTER
	5-06	R5-1	30X30	1			6.25					DO NOT ENTER
	5-07	R5-1	30X30	1			6.25					DO NOT ENTER
	5-08	R2-1	24X30	1			5.00					SPEED LIMIT
	5-09	R7-1D	18X24	1			3.00					NO PARKING ANY TIME
	5-10	R2-2	24X24	1			4.00					NO LEFT TURN SYMBOL
	5-11	R7-1D	18X24	1			3.00					NO PARKING ANY TIME
	6-01	R7-1D	18X24	1			3.00					NO PARKING ANY TIME
	6-02	R2-1	24X30	1			5.00					SPEED LIMIT
	6-03	R1-1	30X30	1			5.18					STOP
	6-04	R7-5D	18X24	1			3.00					2 HOUR PARKING ANY TIME
	6-05	R7-5D	18X24	1			3.00					2 HOUR PARKING ANY TIME
	6-06	R7-1D	18X24	1			3.00					STOP
	6-07	R1-1	30X30	1			5.18					NO LEFT TURN
	6-08	R3-2	24X24	1			4.00					DO NOT ENTER
	6-09	R5-1	30X30	1	1		6.25					DO NOT ENTER
	6-10	R7-1D	18X24	1			3.00					NO PARKING ANY TIME
	6-11	R2-1	24X30	1			5.00					SPEED LIMIT
	6-12	J1-1	24X39	1	1		6.50					JCT/ CTH P
	6-13	R1-1	30X30	1			5.18					STOP
	7-01	R7-1D	18X24	1			3.00					NO PARKING ANY TIME
	7-02	R6-2R	24X30	1			5.00					ONE WAY
	7-03	R3-8A	36X30	1			7.50					LEFT ONLY / AHEAD, RIGHT
	7-04	R1-1	30X30	1			5.18					STOP
	7-05	R5-1	30X30	1			6.25					DO NOT ENTER
	7-06	R7-1D	18X24	1			3.00					NO PARKING ANY TIME
	7-07	R2-1	24X30	1			5.00			7-05		SPEED LIMIT
	7-08	R1-1	30X30	1			5.18					STOP
	7-09	J4-1	24X36	1	1		6.00					WEST USH 14
	7-10	R7-1D	18X24	1			3.00					NO PARKING ANY TIME
	7-11	R4-7	24X30	1			5.00					KEEP RIGHT

-CONTINUED ON NEXT PAGE

All quantities shown are associated with Category 0010 unless otherwise noted

PERMANENT SIGNING TYPE II - CONTINUED

CATEGORY	SIGN #	SIGN CODE	SIGN SIZE IN	POSTS WOOD 4x6-INCH		18-FT (EACH)	634.0616	634.0618	637.2210	637.2215	637.2230	SIGN TYPE II REFLECTIVE H (SF)	SIGN TYPE II REFLECTIVE H (SF)	SIGN TYPE II REFLECTIVE H (SF)	REMARKS
				14-FT (EACH)	16-FT (EACH)										
7-12	W5-54	18X18	1								2.25			REFLECTIVE DIAMOND NO PARKING ANY TIME	
7-13	R2-1D	18X24	1								3.00			KEEP RIGHT	
7-14	R4-7	24X30	1								5.00			KEEP RIGHT	
7-15	R4-7	24X30	1								5.00			KEEP RIGHT	
7-16	R2-1	24X30	1								5.00			SPEED LIMIT	
7-17	R5-1A	36X24	1								6.00			WRONG WAY	
7-18	R6-2R	24X30	1								5.00			ONE WAY	
7-19	J13-1	24X45	1	1							7.50			CTH P	
8-01	W4-2R	36X36	1	1							9.00			LANE REDUCTION RIGHT DO NOT ENTER	
8-02	R5-1	30X30	1								6.25			USH 14	
8-03	J13-1	24X45	1								7.50			MOUNTED ON SIGNAL POST	
8-04	R1-1F	36X36	1								7.46			STOP (FOLDING)	
8-05	R1-1F	36X36	1								7.46			STOP (FOLDING)	
8-06	R4-7	24X30	1								5.00			KEEP RIGHT	
8-07	R3-8W	54X30	2								11.25			RIGHT THRU / LEFT ONLY DO NOT ENTER	
8-08	R5-1	30X30	1								6.25			DO NOT ENTER	
8-09	R1-2	36X31	1								3.88			YIELD	
8-10	R1-1F	36X36	1								7.46			STOP (FOLDING)	
8-11	R5-1	30X30	1								6.25			DO NOT ENTER	
8-12	J13-1	24X45	1								7.50			CTH P	
8-13	R6-2R	24X30	1								5.00			ONE WAY	
8-14	R5-1A	36X24	1								6.00			WRONG WAY	
8-15	R2-1D	18X24	1								3.00			NO PARKING ANY TIME	
8-16	R6-2R	24X30	1								5.00			ONE WAY	
8-17	R4-7	24X30	1								5.00			KEEP RIGHT	
8-18	R4-7	24X30	1								5.00			KEEP RIGHT	
8-19	R4-7	24X30	1								5.00			KEEP RIGHT	
8-20	R4-7	24X30	1								5.00			KEEP RIGHT	
8-21	R4-7	24X30	1								5.00			KEEP RIGHT	
8-22	R4-7	24X30	1								5.00			KEEP RIGHT	
8-23	R1-1F	36X36	1								7.46			STOP (FOLDING)	
8-24	R1-1F	36X36	1								7.46			STOP (FOLDING)	
8-25	R5-1	30X30	1								6.25			DO NOT ENTER	
8-26	R1-1F	36X36	1								7.46			STOP (FOLDING)	
8-27	R1-1F	36X36	1								7.46			STOP (FOLDING)	
8-28	R3-8W	54X30	2								11.25			LEFT ONLY / AHEAD ONLY / RIGHT ONLY	
8-29	J13-1	24X45	1								7.5			USH 14	
8-30	R5-1	30X30	1								6.25			DO NOT ENTER	
8-31	R1-1F	36X36	1								7.46			STOP (FOLDING)	
8-32	J4-1	24X36	1								6.00			USH 14	
8-33	R2-1D	18X24	1								3.00			NO PARKING ANY TIME	
8-34	R6-2R	24X30	1								5.00			ONE WAY	
8-35	R2-1	24X30	1								5.00			SPEED LIMIT	
9-01	W3-3	36X36	1								9.00			SIGNAL AHEAD	
9-02	J1-1	24X39	1								6.50			JCT USH 14	
10-01	R6-2R	24X30	1								5.00			ONE WAY	
10-02	R2-1	24X30	1								5.00			SPEED LIMIT	
10-03	R6-2R	24X30	1								5.00			ONE WAY	
10-04	W11-2	30X30	1								6.25			PEDESTRIAN CROSSING	
10-05	W16-7L	24X12	1								2.00			10-06	
10-06	R1-1	30X30	1								5.18			STOP	
10-07	J1-1	24X39	1								6.50			JCT CTH P	
10-08	R2-1	24X30	1								5.00			SPEED LIMIT	
10-09	W6-1	36X36	1								9.00			DIVIDED HIGHWAY AHEAD	
10-10	R2-1D	18X24	1								3.00			NO PARKING ANY TIME	

MOUNTED ON LIGHT POST  
SIGN MOUNTED ON SAME  
POST AS

Addendum No. 2  
ID 5310-07-70  
Revised Sheet 255  
January 29, 2015

-CONTINUED ON NEXT PAGE

All quantities shown are associated with Category 0010 unless otherwise noted

PROJECT NO: 5310-02-70

HWY: USH 14

COUNTY: DANE

MISCELLANEOUS QUANTITIES

SHEET

255

E

PLOT SCALE: 1:600 (1:0)

Addendum No. 2  
ID 5310-07-70  
Revised Sheet 256  
January 29, 2015

PERMANENT SIGNING TYPE II - CONTINUED

CATEGORY	SIGN #	SIGN CODE	SIGN SIZE IN	POSTS WOOD 4x6-INCH		SIGN TYPE II REFLECTIVE H (SF)	SIGN TYPE II FOLDING (SF)	SIGN TYPE II REFLECTIVE H (SF)	SIGN TYPE II REFLECTIVE H (SF)	REMARKS
				14-FT (EACH)	18-FT (EACH)					
	10-11	R6-2R	24X30			5.00		637.2230	637.2230	ONE WAY BEGIN LEFT TURN LANE
	10-12	R3-20L	24X36	1		6.00				NO PARKING ANY TIME
	10-13	R7-1D	18X24	1		3.00				KEEP RIGHT
	10-14	R4-7	24X30	1		5.00				SIGNAL AHEAD
	10-15	W6-3	36X36	1		9.00				KEEP RIGHT
	10-16	R4-7	24X30			5.00				KEEP RIGHT
	10-17	R4-7	24X30	1		5.00				KEEP RIGHT
	10-18	W5-54	18X18			2.25				REFLECTIVE DIAMOND
	10-19	W6-2	36X36	1		9.00				DIVIDED HIGHWAY AHEAD
	10-20	R2-1	24X30			5.00				SPEED LIMIT
	11-01	W11-2	36X26	1		9.00				PEDESTRIAN CROSSING
	11-02	W16-9P	24X8			1.33				AHEAD
	11-03	R1-1F	36X36			7.46				STOP (FOLDING)
	11-04	R1-1F	36X36			7.46				STOP (FOLDING)
	11-05	R7-1D	18X24			3.00				NO PARKING ANY TIME
	11-06	R1-1F	36X36			3.00				STOP (FOLDING)
	11-07	R7-1D	18X24	1		3.00				NO PARKING ANY TIME
	11-08	W9-1R	36X36	1		9.00				RIGHT LANE ENDS
	12-01	W3-3	36X36	1		9.00				SIGNAL AHEAD
	12-02	R1-1	30X30	1		5.18				STOP
	12-03	R4-7	24X30	1		5.00				KEEP RIGHT
	12-04	R4-7	24X30	1		5.00				KEEP RIGHT
	12-05	W5-54	18X18	1		5.00		2.25		REFLECTIVE DIAMOND
	12-07	W4-2R	36X36	1		9.00				LANE REDUCTION
	12-08	W6-3	36X36	1		9.00				TWO WAY TRAFFIC
	13-01	I2-3	84X24	2		14.00				CROSS PLAINS POPULATION
	13-02	R2-1	24X30	1		5.00				SPEED LIMIT
	13-03	W3-5	36X36	1		6.00				SPEED LIMIT 30 AHEAD
	13-04	J4-1	24X36	1		6.00				USH 14
	13-05	R2-1	24X30	1		5.00				SPEED LIMIT
	13-06	I2-2	72X15	2		7.50				MADISON 14 MILES
	14-01	R7-51L	18X24	1		3.00				NO PARKING TO CORNER
	14-02	R7-51R	18X24	1		3.00				NO PARKING TO CORNER
	TOTAL			77	35	711.01	82.06	115.33		

MOUNTED ON LIGHT POST

77

SIGN FLAGS

637.0620		
SIGN FLAGS PERMANENT		
SIGN CODE (EACH)	TYPE II	
0010	W3-3	2
12-09	W3-3	2
TOTAL		4

All quantities shown are associated with Category 0010 unless otherwise noted

TRAFFIC SIGNALS - POLES, BASES AND LIGHTING		690.8500	654.0102	657.0100	657.0255	657.0310	657.0415	657.0420	657.0425	657.0595	657.0590	657.0595	657.0699	659.1115	658.0110	658.0115	658.0155	658.0215	658.0220	658.0500	658.0695										
		CONSTRUCTION			TRANSFORMER BASES			TRAFFIC SIGNAL STANDARDS			TROMBONE ARMS			LUMINAIRE ARMS			LUMINAIRE UTILITY			BACKPLATES			LED MODULES								
PROJECT NUMBER	SIGNAL	CONCRETE BASES TYPE 1	CONCRETE BASES TYPE 2	PEDESTAL	BREAKAWAY	POLES	TRAFFIC SIGNAL STANDARDS	TRAFFIC SIGNAL STANDARDS	TRAFFIC SIGNAL STANDARDS	TROMBONE ARMS	TROMBONE ARMS	TROMBONE ARMS	SINGLE MEMBER	LUMINAIRE UTILITY	LUMINAIRE UTILITY	FACE 3-1/2 INCH	FACE 4-1/2 INCH	TRAFFIC SIGNAL	TRAFFIC SIGNAL	TRAFFIC SIGNAL	FACE 3-1/2 INCH	FACE 4-1/2 INCH	FACE 3-1/2 INCH	FACE 4-1/2 INCH	FACE 3-1/2 INCH	FACE 4-1/2 INCH	PUSH BUTTONS	PEDESTRIAN COUNTDOWN			
NUMBER	BASE	STATION	OS	(EACH)	(EACH)	(EACH)	(EACH)	(EACH)	(EACH)	(EACH)	(EACH)	(EACH)	(EACH)	(EACH)	(EACH)	(EACH)	(EACH)	(EACH)	(EACH)	(EACH)	(EACH)	(EACH)	(EACH)	(EACH)	(EACH)	(EACH)	(EACH)	(EACH)	(EACH)		
31010270 INTERSECTION OF USH 14 WITH BREWERY ROAD																															
0010	SB-01	160+33	L	1	1	1	1	1	1	1	1	1	1	1	2	2	1	1	1	1	1	2	2	1	1	1	1	1	1		
	SB-02	160+33	R	1	1	1	1	1	1	1	1	1	1	1	1	1	1	1	1	1	1	1	1	1	1	1	1	1	1		
	SB-03	160+07	R	1	1	1	1	1	1	1	1	1	1	1	1	1	1	1	1	1	1	1	1	1	1	1	1	1	1		
	SB-04	159+85	R	1	1	1	1	1	1	1	1	1	1	1	1	1	1	1	1	1	1	1	1	1	1	1	1	1	1		
	SB-05	159+33	R	1	1	1	1	1	1	1	1	1	1	1	2	2	1	1	1	1	1	2	2	1	1	1	1	1	1		
	SB-06	159+26	L	1	1	1	1	1	1	1	1	1	1	1	1	1	1	1	1	1	1	1	1	1	1	1	1	1	1		
	SB-07	159+49	L	1	1	1	1	1	1	1	1	1	1	1	1	1	1	1	1	1	1	1	1	1	1	1	1	1	1		
	SB-08	160+17	L	1	1	1	1	1	1	1	1	1	1	1	1	1	1	1	1	1	1	1	1	1	1	1	1	1	1		
	SB-09	160+28	L	1	1	1	1	1	1	1	1	1	1	1	1	1	1	1	1	1	1	1	1	1	1	1	1	1	1		
	LS	TOTAL		7	2	7	2	4	0	0	1	1	2	2	6	0	0	2	8	0	4	8	0	2	2	4	4	4	4		
31010270 INTERSECTION OF USH 14 WITH CTH P																															
	SB-01	146+46	L	1	1	1	1	1	1	1	1	1	1	1	1	1	1	1	1	1	1	1	1	1	1	1	1	1	1		
	SB-02	146+72	L	1	1	1	1	1	1	1	1	1	1	1	1	1	1	1	1	1	1	1	1	1	1	1	1	1	1		
	SB-03	146+82	L	1	1	1	1	1	1	1	1	1	1	1	1	1	1	1	1	1	1	1	1	1	1	1	1	1	1		
	SB-04	147+50	L	1	1	1	1	1	1	1	1	1	1	1	1	1	1	1	1	1	1	1	1	1	1	1	1	1	1		
	SB-05	147+86	L	1	1	1	1	1	1	1	1	1	1	1	1	1	1	1	1	1	1	1	1	1	1	1	1	1	1		
	SB-06	148+30	L	1	1	1	1	1	1	1	1	1	1	1	1	1	1	1	1	1	1	1	1	1	1	1	1	1	1		
	SB-07	147+96	L	1	1	1	1	1	1	1	1	1	1	1	1	1	1	1	1	1	1	1	1	1	1	1	1	1	1		
	SB-08	147+97	R	1	1	1	1	1	1	1	1	1	1	1	1	1	1	1	1	1	1	1	1	1	1	1	1	1	1		
	SB-09	147+64	R	1	1	1	1	1	1	1	1	1	1	1	1	1	1	1	1	1	1	1	1	1	1	1	1	1	1		
	SB-10	147+17	R	1	1	1	1	1	1	1	1	1	1	1	1	1	1	1	1	1	1	1	1	1	1	1	1	1	1		
	SB-11	146+68	R	1	1	1	1	1	1	1	1	1	1	1	1	1	1	1	1	1	1	1	1	1	1	1	1	1	1		
	SB-12	146+40	R	1	1	1	1	1	1	1	1	1	1	1	1	1	1	1	1	1	1	1	1	1	1	1	1	1	1		
	SB-13	146+38	L	1	1	1	1	1	1	1	1	1	1	1	1	1	1	1	1	1	1	1	1	1	1	1	1	1	1		
	LS	TOTAL		7	6	4	3	7	2	2	3	2	1	8	8	11	4	0	11	4	9	11	4	0	2	11	4	9	9		
	PROJECT TOTAL	947+97		14	8	11	5	9	5	6	3	3	2	10	10	17	4	2	19	4	13	4	2	2	19	4	13	13	13		

Addendum No. 2  
 ID 5310-07-70  
 Revised Sheet 266  
 January 29, 2015

(1) BASE AND TRANSFORMER BASE PLACED UNDER SEPARATE PROJECT  
 (2) BASE AND PEDESTAL BASE PLACED UNDER SEPARATE PROJECT

TRAFFIC SIGNAL PREEMPT

PROJECT NUMBER	5310-02-70	TRAFFIC SIGNAL PREEMPT (EACH)	1
PROJECT LOCATION	INTERSECTION OF USH 14/CTH P		
PROJECT NUMBER	5310-02-70	SPV.0105.30	1
PROJECT LOCATION	STORM WATER BASIN		
PROJECT NUMBER	5310-02-70	STORM WATER BASIN (LS)	1

CONSTRUCTION STAKING

PROJECT NUMBER	5310-02-70	CONSTRUCTION STAKING	1
PROJECT LOCATION	STORM WATER BASIN		

All quantities shown are associated with Category 0010 unless otherwise noted

REMOVING CONCRETE SIGN BASE

CATEGORY	STATION	LOCATION	SPV.0105.32 REMOVING CONCRETE SIGN BASE (LS)
0010	PARCEL 119		1

GEOGRID REINFORCEMENT

CATEGORY	STATION	STATION	LOCATION	REINFORCEMENT (SY)	SPV.0180.01 GEOGRID REINFORCEMENT
STAGE 1	104+89	105+60	LT	240	
	105+60	117+50	L/RT	5,950	
	10+20 'B'	10+60 'B'	L/RT	200	
	10+20 'C'	10+45 'C'	L/RT	115	
	10+20 'D'	10+50 'D'	L/RT	135	
STAGE 2	117+50	130+47	L/RT	6,980	
	8+10 'E'	9+7575 'E'	L/RT	735	
	10+20 'E'	10+72 'E'	L/RT	260	
	10+20 'F'	10+50 'F'	L/RT	135	
	10+20 'G'	10+50 'G'	L/RT	150	
	10+20 'H'	10+54 'H'	L/RT	150	
STAGE 3	139+40	146+50	L/RT	165	
	9+50 'L'	9+80 'L'	L/RT	5,795	
	10+30 'L'	10+77 'L'	L/RT	110	
	10+50 'M'	10+97 'M'	L/RT	220	
	10+60 'N'	10+98 'N'	L/RT	170	
STAGE 4	130+47	139+40	L/RT	4,220	
	10+20 'J'	10+64 'J'	L/RT	195	
	10+20 'J'	11+10 'J'	L/RT	420	
STAGE 5	146+50	148+00	RT	470	
	146+50	149+00	LT	535	
	149+00	154+26	L/RT	1,250	
	154+26	170+00	L/RT	5,030	
	170+00	172+00	LT	490	
	15+50 'P'	17+44 'P'	L/RT	1,920	
	10+40 'Q'	10+77 'Q'	L/RT	210	
	10+40 'R'	11+85 'R'	L/RT	745	
	10+40 'S'	11+40 'S'	L/RT	455	
		TOTAL		48,270	

THERMOPLASTIC ASPHALT CROSSWALK

CATEGORY	STATION	STATION	LOCATION	SPV.0165.03 THERMOPLASTIC ASPHALT CROSSWALK (SF)
0040	108+29	108+35	L/RT	171
	154+27	154+33	L/RT	426
		TOTAL		597

TEMPORARY ACCESS BASE AGGREGATE DENSE 1 1/4-INCH

CATEGORY	STAGE	LOCATION	TEMPORARY ACCESS BASE AGGREGATE DENSE 1 1/4-INCH (TON)
0010	STAGE 1		1,000
	STAGE 2		1,000
	STAGE 3		1,000
	STAGE 4		1,000
	STAGE 5		1,000
		TOTAL	5,000

MAINTAINING AND REMOVING TEMPORARY TRAFFIC SIGNAL

SPV.0105.26	LOCATION	SPV.0105 MAINTAINING AND REMOVING TEMPORARY TRAFFIC SIGNAL (LS)
SPV.0105.26	USH 14 AND CTHP	1
SPV.0105.27	CTH P AND BOURBON ROAD	1
SPV.0105.28	CTH KP AND BOURBON ROAD	1
SPV.0105.29	HILLEBRAND DRIVE AND BOURBON ROAD	1

TEMPORARY BICYCLE/PEDESTRIAN ACCESS

CATEGORY	STAGE	ACCESS (SY)
0010	STAGE 1	700
	STAGE 2	800
	STAGE 3	500
	STAGE 4	600
	STAGE 5	1,200
	TOTAL	3,800

Addendum No. 2  
ID 5310-07-70  
Revised Sheet 269  
January 29, 2015

All quantities shown are associated with Category 0010 unless otherwise noted

PROJECT NO: 5310-02-70

HWY: USH 14

COUNTY: DANE

MISCELLANEOUS QUANTITIES

SHEET

269

E

## SCHEDULE OF ITEMS

REVISED:

CONTRACT:  
20150210005PROJECT(S):  
5310-02-70  
5310-02-73FEDERAL ID(S):  
WISC 2015084  
N/A

CONTRACTOR : \_\_\_\_\_

LINE NO	ITEM DESCRIPTION	APPROX. QUANTITY AND UNITS	UNIT PRICE		BID AMOUNT	
			DOLLARS	CTS	DOLLARS	CTS
1340	628.7555 Culvert Pipe Checks	2.000 EACH	.		.	
1350	628.7560 Tracking Pads	4.000 EACH	.		.	
1360	628.7570 Rock Bags	194.000 EACH	.		.	
1370	629.0210 Fertilizer Type B	12.560 CWT	.		.	
1380	630.0130 Seeding Mixture No. 30	200.000 LB	.		.	
1390	630.0200 Seeding Temporary	272.000 LB	.		.	
1400	631.0300 Sod Water	1,124.000 MGAL	.		.	
1410	631.1000 Sod Lawn	9,428.000 SY	.		.	
1420	633.5200 Markers Culvert End	6.000 EACH	.		.	
1430	634.0614 Posts Wood 4x6-Inch X 14-FT	77.000 EACH	.		.	
1440	634.0616 Posts Wood 4x6-Inch X 16-FT	35.000 EACH	.		.	

## SCHEDULE OF ITEMS

REVISED:

CONTRACT:  
20150210005PROJECT(S):  
5310-02-70  
5310-02-73FEDERAL ID(S):  
WISC 2015084  
N/A

CONTRACTOR : \_\_\_\_\_

LINE NO	ITEM DESCRIPTION	APPROX. QUANTITY AND UNITS	UNIT PRICE		BID AMOUNT	
			DOLLARS	CTS	DOLLARS	CTS
2470	690.0150 Sawing Asphalt	3,949.000 LF	.	.	.	.
2480	690.0250 Sawing Concrete	178.000 LF	.	.	.	.
2490	715.0415 Incentive Strength Concrete Pavement	1,010.000 DOL	1.00000	.	1010.00	.
2500	715.0502 Incentive Strength Concrete Structures	3,510.000 DOL	1.00000	.	3510.00	.
2510	ASP.1T0A On-the-Job Training Apprentice at \$5.00/HR	3,500.000 HRS	5.00000	.	17500.00	.
2520	ASP.1T0G On-the-Job Training Graduate at \$5. 00/HR	2,000.000 HRS	5.00000	.	10000.00	.
2530	SPV.0035 Special 01. Select Backfill	7,500.000 CY	.	.	.	.
2540	SPV.0035 Special 02. Coloring Concrete Tan	95.000 CY	.	.	.	.
2550	SPV.0045 Special 01. Seismograph Special	250.000 DAY	.	.	.	.
2560	SPV.0060 Special 01. Storm Sewer Tap	7.000 EACH	.	.	.	.
2570	SPV.0060 Special 03. Lighting Control Cabinet	2.000 EACH	.	.	.	.



## SCHEDULE OF ITEMS

REVISED:

CONTRACT:  
20150210005PROJECT(S):  
5310-02-70  
5310-02-73FEDERAL ID(S):  
WISC 2015084  
N/A

CONTRACTOR : \_\_\_\_\_

LINE NO	ITEM DESCRIPTION	APPROX. QUANTITY AND UNITS	UNIT PRICE		BID AMOUNT	
			DOLLARS	CTS	DOLLARS	CTS
2580	SPV.0060 Special 04. Decorative Lighting Assembly Lm-Sa	11.000 EACH	.		.	
2590	SPV.0060 Special 05. Decorative Lighting Assmebly Lm-Sb	19.000 EACH	.		.	
2600	SPV.0060 Special 06. Decorative Lighting Assembly Lm-Sc	14.000 EACH	.		.	
2610	SPV.0060 Special 07. Decorative Lighting Assembly Lm-Da	12.000 EACH	.		.	
2620	SPV.0060 Special 09. Manhole Covers Special Solid	39.000 EACH	.		.	
2630	SPV.0060 Special 10. Inlet Covers Special	24.000 EACH	.		.	
2640	SPV.0060 Special 11. Inlet Covers Special Type L	80.000 EACH	.		.	
2650	SPV.0060 Special 12. Street Lighting Concrete Bases	56.000 EACH	.		.	
2660	SPV.0060 Special 13. Cover Plates Permanent	2.000 EACH	.		.	
2670	SPV.0060 Special 14. Leopold Bench	1.000 EACH	.		.	
2680	SPV.0060 Special 15. Boot Brush	1.000 EACH	.		.	

## SCHEDULE OF ITEMS

REVISED:

CONTRACT:  
20150210005PROJECT(S):  
5310-02-70  
5310-02-73FEDERAL ID(S):  
WISC 2015084  
N/A

CONTRACTOR : \_\_\_\_\_

LINE NO	ITEM DESCRIPTION	APPROX. QUANTITY AND UNITS	UNIT PRICE		BID AMOUNT	
			DOLLARS	CTS	DOLLARS	CTS
2690	SPV.0060 Special 16. Sanitary Service Lateral Wyes 18-Inch X 8-Inch	2.000 EACH	.		.	
2700	SPV.0060 Special 17. Existing Sanitary Sewer Connections	16.000 EACH	.		.	
2710	SPV.0060 Special 18. Sanitary Service Lateral Wyes 18-Inch X 6-Inch	61.000 EACH	.		.	
2720	SPV.0060 Special 19. Sanitary Service Lateral Caps	30.000 EACH	.		.	
2730	SPV.0060 Special 20. Sanitary Service Lateral Connections	40.000 EACH	.		.	
2740	SPV.0060 Special 21. Sanitary Service Lateral Tracing Systems	67.000 EACH	.		.	
2750	SPV.0060 Special 22. Sanitary Manhole Removal	29.000 EACH	.		.	
2760	SPV.0060 Special 23. Sanitary Manhole Castings	29.000 EACH	.		.	
2770	SPV.0060 Special 24. Sanitary Manhole Chimney Seals, External	28.000 EACH	.		.	
2780	SPV.0060 Special 25. Water Main Offset 12-Inch Brewery Creek	1.000 EACH	.		.	
2790	SPV.0060 Special 26. Water Main Insulation	1.000 EACH	.		.	

## SCHEDULE OF ITEMS

REVISED:

CONTRACT:  
20150210005PROJECT(S):  
5310-02-70  
5310-02-73FEDERAL ID(S):  
WISC 2015084  
N/A

CONTRACTOR : \_\_\_\_\_

LINE NO	ITEM DESCRIPTION	APPROX. QUANTITY AND UNITS	UNIT PRICE		BID AMOUNT	
			DOLLARS	CTS	DOLLARS	CTS
2800	SPV.0060 Special 27. Existing Water Main Connections	11.000 EACH	.		.	
2810	SPV.0060 Special 28. Gate Valves And Boxes 12-Inch	21.000 EACH	.		.	
2820	SPV.0060 Special 29. Gate Valves And Boxes 8-Inch	11.000 EACH	.		.	
2830	SPV.0060 Special 30. Gate Valves And Boxes 6-Inch	16.000 EACH	.		.	
2840	SPV.0060 Special 31. Gate Valves And Boxes 4-Inch	2.000 EACH	.		.	
2850	SPV.0060 Special 32. Abandon Gate Valves And Boxes	20.000 EACH	.		.	
2860	SPV.0060 Special 33. Existing Hydrant Removals	9.000 EACH	.		.	
2870	SPV.0060 Special 34. New Hydrants	17.000 EACH	.		.	
2880	SPV.0060 Special 35. Corporation Stops 1-Inch	65.000 EACH	.		.	
2890	SPV.0060 Special 36. Corporation Stops 2-Inch	2.000 EACH	.		.	
2900	SPV.0060 Special 37. Curb Stops 1-Inch	65.000 EACH	.		.	

## SCHEDULE OF ITEMS

REVISED:

CONTRACT:  
20150210005PROJECT(S):  
5310-02-70  
5310-02-73FEDERAL ID(S):  
WISC 2015084  
N/A

CONTRACTOR : \_\_\_\_\_

LINE NO	ITEM DESCRIPTION	APPROX. QUANTITY AND UNITS	UNIT PRICE		BID AMOUNT	
			DOLLARS	CTS	DOLLARS	CTS
2910	SPV.0060 Special 38. Curb Stops 2-Inch	2.000 EACH	.		.	
2920	SPV.0060 Special 39. Water Service Lateral Reconnections	63.000 EACH	.		.	
2940	SPV.0060 Special 46. Traffic Signal Preempt Intersection Of Ush 14/Cth P	1.000 EACH	.		.	
2950	SPV.0060 Special 48. Sanitary Service Lateral Wyes 15-Inch X 6-Inch	2.000 EACH	.		.	
2960	SPV.0060 Special 49. Sanitary Service Lateral Wyes 12-Inch X 6-Inch	2.000 EACH	.		.	
2970	SPV.0060 Special 50. Sanitary Service Lateral Wyes 8-Inch X 6-Inch	2.000 EACH	.		.	
2980	SPV.0060 Special 51. Temporary Curb Ramp	95.000 EACH	.		.	
2990	SPV.0060 Special 52. Construction Staking Curb Ramp	64.000 EACH	.		.	
3000	SPV.0060 Special 53. Adjusting Monitoring Well	4.000 EACH	.		.	
3010	SPV.0060 Special 54. Crack And Damage Survey Special	22.000 EACH	.		.	

## SCHEDULE OF ITEMS

REVISED:

CONTRACT:  
20150210005PROJECT(S):  
5310-02-70  
5310-02-73FEDERAL ID(S):  
WISC 2015084  
N/A

CONTRACTOR : \_\_\_\_\_

LINE NO	ITEM DESCRIPTION	APPROX. QUANTITY AND UNITS	UNIT PRICE		BID AMOUNT	
			DOLLARS	CTS	DOLLARS	CTS
3020	SPV.0060 Special 55. Tree Trimming	5.000 EACH	.		.	
3030	SPV.0060 Special 56. Water Main Offset 12-Inch Under Enchanted Valley Drainageway Box Culvert	1.000 EACH	.		.	
3040	SPV.0060 Special 57. Salvage & Reinstall Landscaping Materials	23.000 EACH	.		.	
3050	SPV.0085 Special 01. Bar Steel Reinforcement Hs Stainless Bridges	3,140.000 LB	.		.	
3060	SPV.0090 Special 01. Asphalt Joint Adhesive	11,187.000 LF	.		.	
3070	SPV.0090 Special 02. Sanitary Sewer Pvc 18-Inch 13 Feet Depth Or Less	1,662.000 LF	.		.	
3080	SPV.0090 Special 03. Sanitary Sewer Pvc 18-Inch 13 Feet Depth To 16 Feet Depth	1,477.000 LF	.		.	
3090	SPV.0090 Special 04. Sanitary Sewer Pvc 18-Inch 16 Feet Depth Or Greater	556.000 LF	.		.	
3100	SPV.0090 Special 05. Sanitary Sewer Pvc 15-Inch	893.000 LF	.		.	

## SCHEDULE OF ITEMS

REVISED:

CONTRACT:  
20150210005PROJECT(S):  
5310-02-70  
5310-02-73FEDERAL ID(S):  
WISC 2015084  
N/A

CONTRACTOR : \_\_\_\_\_

LINE NO	ITEM DESCRIPTION	APPROX. QUANTITY AND UNITS	UNIT PRICE		BID AMOUNT	
			DOLLARS	CTS	DOLLARS	CTS
3110	SPV.0090 Special 06. Sanitary Sewer Pvc 12-Inch	1,293.000 LF	.		.	
3120	SPV.0090 Special 07. Sanitary Sewer Pvc 8-Inch	246.000 LF	.		.	
3130	SPV.0090 Special 08. Steel Casing 24-Inch By Open Cut Methods	198.000 LF	.		.	
3140	SPV.0090 Special 09. Water Main Ductile Iron 12-Inch	6,031.000 LF	.		.	
3150	SPV.0090 Special 10. Water Main Ductile Iron 8-Inch	442.000 LF	.		.	
3160	SPV.0090 Special 11. Water Main Ductile Iron 6-Inch	364.000 LF	.		.	
3170	SPV.0090 Special 12. Water Main Ductile Iron 4-Inch	90.000 LF	.		.	
3180	SPV.0090 Special 13. Water Service Laterals 1-Inch	2,016.000 LF	.		.	
3190	SPV.0090 Special 14. Water Service Laterals 2-Inch	129.000 LF	.		.	
3200	SPV.0090 Special 15. Sanitary Service Lateral Pvc 6-Inch	2,253.000 LF	.		.	

SCHEDULE OF ITEMS

REVISED:

CONTRACT:  
20150210005

PROJECT(S):  
5310-02-70  
5310-02-73

FEDERAL ID(S):  
WISC 2015084  
N/A

CONTRACTOR : \_\_\_\_\_

LINE NO	ITEM DESCRIPTION	APPROX. QUANTITY AND UNITS	UNIT PRICE		BID AMOUNT	
			DOLLARS	CTS	DOLLARS	CTS
3210	SPV.0090 Special 16. Sanitary Service Lateral Pvc 8-Inch	67.000 LF	.		.	
3220	SPV.0090 Special 17. Pedestrian Safety Barrier	13,940.000 LF	.		.	
3230	SPV.0090 Special 18. Steel Casing 24-Inch By Boring	29.000 LF	.		.	
3240	SPV.0090 Special 19. Construction Staking Sidewalk	10,526.000 LF	.		.	
3250	SPV.0090 Special 20. Construction Staking Wall Modular Block Gravity	535.000 LF	.		.	
3260	SPV.0105 Special 01. Salvage Fishery Sign	LUMP	LUMP		.	
3270	SPV.0105 Special 02. Research And Locate Existing Property Monuments	LUMP	LUMP		.	
3280	SPV.0105 Special 03. Verify And Replace Existing Property Monuments	LUMP	LUMP		.	
3290	SPV.0105 Special 04. Concrete Pavement Joint Layout	LUMP	LUMP		.	
3300	SPV.0105 Special 05. Timber Steps	LUMP	LUMP		.	

## SCHEDULE OF ITEMS

REVISED:

CONTRACT:  
20150210005PROJECT(S):  
5310-02-70  
5310-02-73FEDERAL ID(S):  
WISC 2015084  
N/A

CONTRACTOR : \_\_\_\_\_

LINE NO	ITEM DESCRIPTION	APPROX. QUANTITY AND UNITS	UNIT PRICE		BID AMOUNT	
			DOLLARS	CTS	DOLLARS	CTS
3310	SPV.0105 Special 06. Temporary Crosswalk Access (Ush 14 And Water Street)	LUMP	LUMP			.
3320	SPV.0105 Special 07. Temporary Crosswalk Access (Ush 14 And Center Street)	LUMP	LUMP			.
3330	SPV.0105 Special 08. Temporary Crosswalk Access (Ush 14 And Spring Street)	LUMP	LUMP			.
3340	SPV.0105 Special 09. Temporary Crosswalk Access (Ush 14 And East Street)	LUMP	LUMP			.
3350	SPV.0105 Special 10. Temporary Crosswalk Access (Ush 14 And Maple Street)	LUMP	LUMP			.
3360	SPV.0105 Special 11. Temporary Crosswalk Access (Ush 14 And Hickory Street)	LUMP	LUMP			.
3370	SPV.0105 Special 12. Temporary Crosswalk Access (Ush 14 And Wilson Street)	LUMP	LUMP			.
3380	SPV.0105 Special 13. Temporary Crosswalk Access (Ush 14 And Mill Street)	LUMP	LUMP			.



## SCHEDULE OF ITEMS

REVISED:

CONTRACT:  
20150210005PROJECT(S):  
5310-02-70  
5310-02-73FEDERAL ID(S):  
WISC 2015084  
N/A

CONTRACTOR : \_\_\_\_\_

LINE NO	ITEM DESCRIPTION	APPROX. QUANTITY AND UNITS	UNIT PRICE		BID AMOUNT	
			DOLLARS	CTS	DOLLARS	CTS
3390	SPV.0105 Special 14. Temporary Crosswalk Access (Ush 14 And American Legion Drive)	LUMP	LUMP			.
3400	SPV.0105 Special 15. Temporary Crosswalk Access (Ush 14 And Caesar Street)	LUMP	LUMP			.
3410	SPV.0105 Special 16. Temporary Crosswalk Access (Ush 14 And Jovina Street)	LUMP	LUMP			.
3420	SPV.0105 Special 17. Temporary Crosswalk Access (Ush 14 And Valley Street)	LUMP	LUMP			.
3430	SPV.0105 Special 18. Temporary Crosswalk Access (Ush 14 And Eulalia Street)	LUMP	LUMP			.
3440	SPV.0105 Special 19. Temporary Crosswalk Access (Ush 14 And Cth P)	LUMP	LUMP			.
3450	SPV.0105 Special 20. Temporary Crosswalk Access (Ush 14 And Glaciers Edge Square)	LUMP	LUMP			.
3460	SPV.0105 Special 21. Temporary Crosswalk Access (Ush 14 And Brewery Road)	LUMP	LUMP			.

## SCHEDULE OF ITEMS

REVISED:

CONTRACT:  
20150210005PROJECT(S):  
5310-02-70  
5310-02-73FEDERAL ID(S):  
WISC 2015084  
N/A

CONTRACTOR : \_\_\_\_\_

LINE NO	ITEM DESCRIPTION	APPROX. QUANTITY AND UNITS	UNIT PRICE		BID AMOUNT	
			DOLLARS	CTS	DOLLARS	CTS
3470	SPV.0105 Special 22. Railing Steel Type C3 Galvanized B-13-799	LUMP	LUMP			.
3490	SPV.0105 Special 24. Dewatering	LUMP	LUMP			.
3500	SPV.0105 Special 26. Maintaining And Removing Temporary Traffic Signal (Ush 14 And Cth P)	LUMP	LUMP			.
3510	SPV.0105 Special 27. Maintaining And Removing Temporary Traffic Signal (Cth P And Bourbon Road)	LUMP	LUMP			.
3520	SPV.0105 Special 28. Maintaining And Removing Temporary Traffic Signal (Cth Kp And Bourbon Road)	LUMP	LUMP			.
3530	SPV.0105 Special 29. Maintaining And Removing Temporary Traffic Sig Hillebrand Dr And Bourbon Rd	LUMP	LUMP			.
3540	SPV.0105 Special 30. Construction Staking Storm Sewer Water Basin	LUMP	LUMP			.
3550	SPV.0105 Special 31. Temporary Water System	LUMP	LUMP			.
3560	SPV.0165 Special 02. Colored And Stamped Concrete	SF	2,135.000			.

SCHEDULE OF ITEMS

REVISED:

CONTRACT:  
20150210005

PROJECT(S):  
5310-02-70  
5310-02-73

FEDERAL ID(S):  
WISC 2015084  
N/A

CONTRACTOR : \_\_\_\_\_

LINE NO	ITEM DESCRIPTION	APPROX. QUANTITY AND UNITS	UNIT PRICE		BID AMOUNT	
			DOLLARS	CTS	DOLLARS	CTS
3570	SPV.0165 Special 03. Thermoplastic Asphalt Crosswalk	597.000 SF	.		.	
3580	SPV.0180 Special 01. Geogrid Reinforcement	48,270.000 SY	.		.	
3590	SPV.0180 Special 02. Temporary Pedestrian/Bicycle Access	3,800.000 SY	.		.	
3600	SPV.0195 Special 01. Temporary Access Base Aggregate Dense 1 1/4-Inch	5,000.000 TON	.		.	
3610	SPV.0200 Special 01. Sanitary Service Lateral Risers	246.000 VF	.		.	
3620	SPV.0200 Special 02. Standard Sanitary Manhole Masonry 48-Inch Diameter	263.930 VF	.		.	
3630	SPV.0200 Special 03. Drop Sanitary Manhole Masonry 48-Inch Diameter	63.350 VF	.		.	
3640	520.4012 Culvert Pipe Temporary 12-Inch	107.000 LF	.		.	
3650	SPV.0060 Special 58. Water Main Offset Standard	3.000 EACH	.		.	
3660	SPV.0105 Special 32. Removing Concrete Sign Base	LUMP	LUMP		.	
	SECTION 0001 TOTAL				.	
	TOTAL BID				.	