



# Wisconsin Department of Transportation

February 3, 2015

## Division of Transportation Systems Development

Bureau of Project Development  
 4802 Sheboygan Avenue, Rm 601  
 P O Box 7916  
 Madison, WI 53707-7916

Telephone: (608) 266-1631  
 Facsimile (FAX): (608) 266-8459

### NOTICE TO ALL CONTRACTORS:

**Proposal #10: 5843-00-70, WISC 2015 088**  
**Okee – Harmony Road**  
**Red Cedar Drive to CTH J**  
**CTH V**  
**Columbia County**

### Letting of February 10, 2015

This is Addendum No. 1, which provides for the following:

#### Schedule of Items

Revised Bid Item Quantities					
Bid Item	Item Description	Unit	Old Quantity	Revised Quantity	Proposal Total
520.1024	Apron Endwalls for Culvert Pipe 24-Inch	EA	13	11	11
521.0124	Culvert Pipe Corrugated Steel 24-Inch	LF	572	514	514
650.4500	Construction Staking Subgrade	LF	4015	13930	13930
650.5000	Construction Staking Base	LF	13232	4713	4713
650.9920	Construction Staking Slope Stakes	LF	13232	13930	13930

Added Bid Item Quantities					
Bid Item	Item Description	Unit	Old Quantity	Revised Quantity	Proposal Total
204.0115	Removing Asphaltic Surface Butt Joints	SY	0	254	254
311.0110	Breaker Run	Ton	0	5100	5100
523.0419	Culvert Pipe Reinforced Concrete Horizontal Elliptical Class HE-IV 19x30 Inch	LF	0	62	62
523.0519	Apron Endwalls for Culvert Pipe Reinforced Concrete Horizontal Elliptical 19x30 Inch	EA	0	2	2

Deleted Bid Item Quantities					
Bid Item	Item Description	Unit	Old Quantity	Revised Quantity	Proposal Total
209.0100	Backfill Granular	CY	3000	0	0

## Plan Sheets

Revised Plan Sheets	
Plan Sheet	Plan Sheet Title (brief description of changes to sheet)
8	Construction Details (Added note regarding payment for "Removing Asphaltic Surface Butt Joints")
28	Miscellaneous Quantities (Added item "Removing Asphaltic Surface Butt Joints" and changed item "Backfill Granular" to "Breaker Run")
30	Miscellaneous Quantities (Modified bid items and quantities pertaining to culvert pipe at Station 320+35)
36	Miscellaneous Quantities (Modified quantities for various Construction Staking items)
50	Plan & Profile (Corrected type and size of culvert pipe at Station 320+35)
136	Cross Sections (Corrected type and size of culvert pipe at Station 320+35)

## Schedule of Items

Attached, dated February 3, 2015, are the revised Schedule of Items Pages 1 – 11.

## Plan Sheets

The following 8½ x 11-inch sheets are attached and made part of the plans for this proposal:  
Revised: 8, 28, 30, 36, 50, and 136.

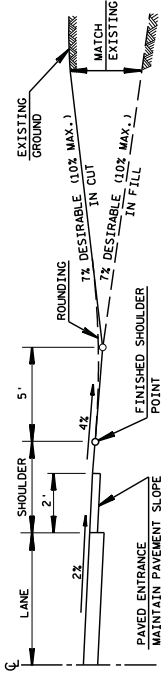
The responsibility for notifying potential subcontractors and suppliers of these changes remains with the prime contractor.

Sincerely,

*Mike Coleman*

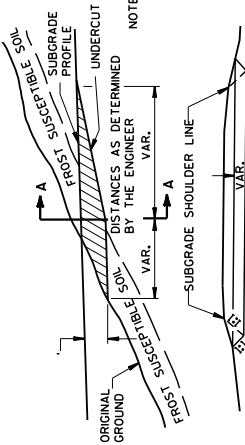
Proposal Development Specialist  
Proposal Management Section

END OF ADDENDUM



PROFILE VIEW

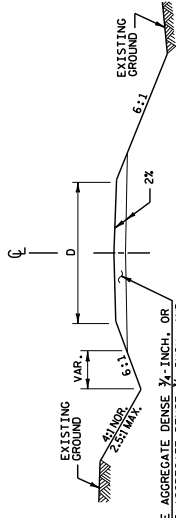
NOTE: EXACT LOCATIONS AND EXTENT OF E.B.S. SECTIONS SHALL BE DETERMINED BY THE ENGINEER IN THE FIELD. E.B.S. AREA TO BE BACKFILLED WITH MATERIAL ACCEPTABLE TO THE ENGINEER WITH ADJOINING FILL MATERIAL. THE FILL SECTION WITHIN 100' OF THE MOUTH OF THE CUT MUST BE KEPT 2' BELOW SUBGRADE UNTIL E.B.S. IS COMPLETED.



SECTION A-A

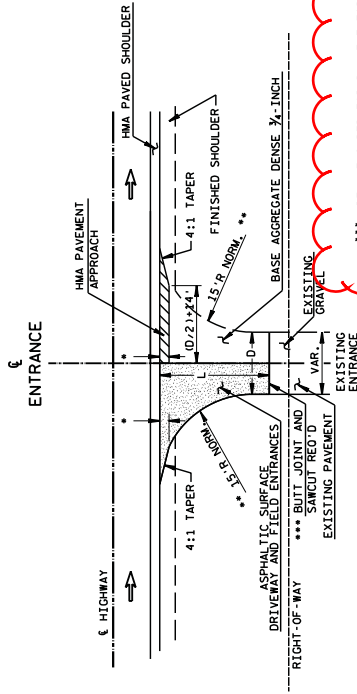
CROSS SECTION SHOWING UNDERCUT

DETAIL FOR EXCAVATION BELOW SUBGRADE AT CUTS



TYPICAL CROSS SECTION

6" BASE AGGREGATE DENSE 1/2" INCH. OR GREATER CURBS AND 3" ASPHALTIC SURFACE OR THE SAME THICKNESS AS REQUIRED FOR PAVED SHOULDERS.



PLAN VIEW

L-VARIABLE, EXACT LENGTH TO BE DETERMINED BY THE ENGINEER. THE FINISH SURFACE SHALL BE BUILT ON THE SURFACE FAR ENOUGH TO GET A SMOOTH PROFILE.  
 D-DRIVEWAY WIDTH  
 D-20 TYP. (P.E.'S & F.E.'S) (16' MIN. - 24' MAX.)  
 D-28 TYP. (C.E.'S & FARM ENT.) (24' MIN. - 35' MAX.)

\*\*\* AREA MEASURED FOR PAYMENT FOR "REMOVING ASPHALTIC SURFACE BUTT JOINT" IS 10' FROM SAWCUT. \*\*\*  
 \*\*\* RADIUS IS TANGENT TO PAVED SHOULDER EDGE OR 5' MAX. OFF EDGE OF MAIN LINE PAVEMENT WHICH EVER IS LESS. \*\*\*  
 \*\*\* 3' MAX. OR TO FINISHED SHOULDER WHICH EVER IS LESS. \*\*\*

Addendum No. 1  
 ID 5843-00-70  
 Revised Sheet 8  
 February 3, 2015

RURAL DRIVEWAY INTERSECTION DETAIL (P.E.'S, F.E.'S & C.E.'S) (FOR NEW CONSTRUCTION)

**REMOVING SMALL CULVERT PIPES**

STATION	TO STATION	ROADWAY	LOCATION	STA	ID	CLEARING	201.0120	201.0205	201.0220	204.0170	204.0180	REMOVING	203.0100	COMMENTS
START	END						GRUBBING	GRUBBING	GRUBBING	REMOVING	REMOVING	DELINEATORS	LENGTH	
							STA	STA	ID	LF	EACH	AND MARKERS	FEET	EACH
259+00	-	261+00	CTHV	RT	2			2					25	1
261+41		261+41	CTHV	LT	12			12					39	1
262+60		262+60	CTHV	LT	12			12					24	1
264+00	-	268+00	CTHV	LT-RT	4			4					40	1
273+00	-	276+00	CTHV	LT-RT	3			3					25	1
295+50	-	296+50	CTHV	LT	1			1					24	1
315+53		315+53	CTHV	LT	14			14					38	1
320+79		320+79	CTHV	LT	20			20					36	2
329+00	-	331+00	CTHV	LT	2			2					55	1
329+45	-	330+13	CTHV	LT						80			31	1
330+85	-	331+59	CTHV	LT						85			24	1
331+93	-	333+79	CTHV	LT						205			38	1
332+00	-	335+00	CTHV	RT	3			3					36	2
334+83	-	339+58	CTHV	LT						480			55	1
336+00	-	341+00	CTHV	LT	5			5					31	1
342+00	-	343+00	CTHV	RT	1			1					30	1
343+44		343+44	CTHV	LT	12			12					27	2
345+28	-	355+44	CTHV	LT						1050			20	1
347+76		347+76	CTHV	LT	12			12					25	1
353+77		353+77	CTHV	LT	9			9					24	1
356+00	-	361+00	CTHV	LT						500			34	1
361+47		361+47	CTHV	LT	10			10					40	1
<b>UNDISTRIBUTED</b>														
<b>TOTALS</b>														
21    101    21    101    101    2400    20														

COUNTY: COLUMBIA

HWY: CTH V

PROJECT NUMBER: 5843-00-70

MISCELLANEOUS QUANTITIES

SHEET NO: 28

ADDENDUM NO. 1

ID 5843-00-70

REVISED SHEET 28

FEBRUARY 3, 2015

3

**REMOVING ASPHALTIC SURFACE BUTT JOINTS**

STATION	LOCATION	SY	NOTES
260+00	RT	12	P.E.
261+44	RT	13	P.E.
265+80	RT	13	P.E.
268+18	RT	17	P.E.
313+20	RT	27	C.E.
313+20	LT	27	C.E.
318+78	RT	22	P.E.
321+11	LT	26	P.E.
331+82	LT	12	P.E.
332+00	RT	16	P.E.
334+69	LT	12	P.E.
339+73	LT	12	P.E.
362+90	LT	19	P.E.
46+38	LT	26	P.E.
<b>TOTAL</b>			
254			

STATION	ROADWAY	LOCATION	SIZE	MATERIAL	LENGTH	203.0100	COMMENTS
			INCHES		FEET	EACH	
260+04	CTHV	RT	18	CMCP	25	1	
261+43	CTHV	RT	16	CMCP	39	1	
265+74	CTHV	RT	16	CMCP	24	1	
268+40	CTHV	LT-RT	16	CMCP	40	1	
286+34	CTHV	LT	18	CMCP	25	1	
299+54	CTHV	LT	24	CMCP	24	1	
307+49	CTHV	LT-RT	24	CMCP	38	1	
310+28	CTHV	LT	20	CMCP	36	2	
313+14	CTHV	RT	18	CMCP	35	1	
313+23	CTHV	LT	18	CMCP	51	1	
316+65	CTHV	LT	16	CMCP	22	1	
317+45	CTHV	LT	16	CMCP	30	1	
320+35	CTHV	LT-RT	32	CMCP	39	1	
321+10	CTHV	LT	18	CMCP	23	1	
323+18	CTHV	LT-RT	24	CMCP	36	1	
323+95	CTHV	LT	18	CMCP	27	2	
327+00	CTHV	LT	20	CMCP	40	1	
330+72	CTHV	LT	20	CMCP	25	1	
331+81	CTHV	LT	20	CMCP	24	1	
334+90	CTHV	LT-RT	18	CMCP	39	1	
339+70	CTHV	LT	18	CMCP	25	1	
342+00	CTHV	LT-RT	24	CMCP	50	1	
342+21	CTHV	LT	12	PVC	28	1	
344+30	CTHV	LT	12	PVC	30	1	
355+57	CTHV	LT	24	CMCP	34	1	
356+15	CTHV	LT-RT	30	CMCP	40	1	
361+33	CTHV	RT	22	CMCP	12	1	
361+54	CTHV	LT-RT	24	CMCP	43	1	
362+86	CTHV	LT	16	CMCP	26	1	
53+28	CTHV	LT	20	CMCP	26	1	ENDWALL ONLY
46+30	RYAN RD	LT	18	CMCP	30	1	
48+00	RYAN RD	LT	18	CMCP	37	1	
<b>TOTALS</b>							34

STATION	ROADWAY	LOCATION	213.0100	214.0100
			EACH	STA
<b>FINISHING ROADWAY</b>				
213.0100			1	
<b>TOTAL</b>				
1				

STATION	ROADWAY	LOCATION	213.0100	214.0100
			EACH	STA
<b>OBLITERATING OLD ROAD</b>				
213.0100			3.6	
			4.8	
<b>TOTAL</b>				
8.4				

**EARTHWORK SUMMARY**

STATION TO STATION	LOCATION	CUT(2)	EXCAVATION COMMON	(1) SALVAGED/ UNUSABLE/ PAYMENT	(4) BREAKER RUN	(5) AVAILABLE	(6) EXPANDED
		CY	CY	CY	TON	CY	CY
253+50 - 385+50 (3)	CTHV	33942	2221	1050	102	33004	20371
43+00 - 50+00 (3)	RYAN RD	1355	646	50		1305	2426
10+50 - 12+00	LANG DR	212				212	24
48+50 - 55+50	CTHV/CTHJ	407		30		377	705
UNDISTRIBUTED			2500		5100		881
<b>TOTALS</b>		35916	5367	1130	102	34898	23525
<b>BID ITEM TOTALS</b>		41283			5100		25823

(1) EXCAVATION COLUMN IS THE SUM OF THE CUT AND EBS EXCAVATION COLUMNS. ITEM IS INCLUDED IN CUT QUANTITY.  
 (2) SALVAGED/UNUSABLE PAVEMENT MATERIAL LOCATED WITHIN THE RECONSTRUCTION AREAS IS INCLUDED IN CUT QUANTITY.  
 (3) EXPANDED FILL QUANTITY FOR CTHV AND RYAN RD IS SUBJECT TO EXCESS BORROW AND DOES NOT REQUIRE SELECT BORROW AS BACKFILL.  
 (4) BREAKER RUN QUANTITY EQUALS (UNDISTRIBUTED)\* 1.2\*1.7 TON/CY  
 (5) AVAILABLE MATERIAL = CUT + ROCK\*(1.1) - SALVAGED/UNUSABLE PAVEMENT  
 (6) EXPANDED FILL FACTOR = 1.25

PROJECT NUMBER: 5843-00-70

HWY: CTH V

COUNTY: COLUMBIA

MISCELLANEOUS QUANTITIES

SHEET NO: 28

ADDENDUM NO. 1

ID 5843-00-70

REVISED SHEET 28

FEBRUARY 3, 2015

3

Addendum No. 1  
ID 5843-00-70  
Revised Sheet 30  
February 3, 2015

DRAINAGE ITEMS

STATION	ROADWAY	LOCATION	520.1024		520.1030		520.7000		520.8000		521.0118		521.0124		521.0130		521.1518		521.1524		524.0618		524.0618		633.5200				
			APRON ENDWALLS FOR CULVERT PIPE	24-INCH	30-INCH	PIPES	CLEANING CULVERT	CONCRETE COLLARS	FOR PIPE	18-INCH	24-INCH	30-INCH	THICKNESS	APRON ENDWALLS FOR CULVERT PIPE SLOPED SIDE DRAINS STEEL	18-INCH	24-INCH	6 TO 1	6 TO 1	18-INCH	18-INCH	APRON ENDWALLS FOR CULVERT PIPE SALVAGED	18-INCH	APRON ENDWALLS FOR CULVERT PIPE SALVAGED	18-INCH	APRON ENDWALLS FOR CULVERT PIPE SALVAGED	18-INCH	APRON ENDWALLS FOR CULVERT PIPE SALVAGED	18-INCH	MARKERS CULVERT
260+04	CTH V	RT							18		0.064	2																	
261+43	CTH V	RT							22		0.064	2																	
277+50	CTH V	RT-LT						98			0.064																		
290+00	CTH V	RT						32			0.064																		
299+54	CTH V	LT						20			0.064																		
307+49	CTH V	RT-LT						58			0.064																		
310+28	CTH V	LT						40			0.064																		
313+20	CTH V	RT									0.064																		
313+23	CTH V	LT						38			0.064																		
316+65	CTH V	LT						22			0.064																		
317+45	CTH V	LT						26			0.064																		
321+10	CTH V	LT						26			0.064																		
323+18	CTH V	RT-LT						52			0.064																		
323+95	CTH V	LT						22			0.064																		
327+00	CTH V	LT						30			0.064																		
330+72	CTH V	LT						20			0.064																		
331+81	CTH V	LT						22			0.064																		
334+90	CTH V	RT-LT						58			0.064																		
339+70	CTH V	LT						22			0.064																		
355+57	CTH V	LT						22			0.064																		
356+15	CTH V	RT-LT								58	0.079																		
361+33	CTH V	RT						22			0.064																		
361+50	CTH V	RT-LT						66			0.064																		
46+30	RYAN RD	LT						38			0.064																		
53+33	CTH V/CTH J	LT						22			0.064																		
TOTALS								1	1	1		22	16	58	58			22	2	56	2							13	
PROJECT TOTALS								1	1	1		22	16	58	58			22	2	56	2							17	

\*\*\* ITEMS FOUND ELSEWHERE IN PLAN

**CULVERT PIPE REINFORCED CONCRETE HORIZONTAL ELLIPTICAL 19x30-INCH**

STATION	ROADWAY	LOCATION	LF	EACH	CULVERT END
320+35	CTH V	LT-RT	62	2	2
<b>TOTALS</b>			<b>62</b>	<b>2</b>	<b>2</b>
<b>PROJECT TOTALS</b>			<b>62</b>	<b>2</b>	<b>17</b>

\*\*\* ITEMS FOUND ELSEWHERE IN PLAN

\*\*\* MIS INLETS COVERS SHALL BE FLAT

\*\*\* ITEMS FOUND ELSEWHERE IN PLAN

STORM SEWER

STATION	ROADWAY	LOCATION	LF	EACH	522.0124	522.1024	611.0627	611.0642	611.3230	611.3902	633.5200
					CULVERT PIPE REINFORCED CONCRETE CLASS III 24-INCH	APRON ENDWALLS FOR CULVERT PIPE REINFORCED CONCRETE 24-INCH	INLET COVERS TYPE HM	INLET COVERS TYPE MS	INLET 2X3-FT GRATE	INLET MEDIAN 2	MARKERS CULVERT
268+40	CTH V	RT-LT	48	1	1	1	1	1	1	1	1
342+20	CTH V	RT-LT	64	1	1	1	2	2	1	1	1
<b>TOTALS</b>			<b>112</b>	<b>2</b>	<b>2</b>	<b>2</b>	<b>3</b>	<b>3</b>	<b>2</b>	<b>2</b>	<b>2</b>
<b>PROJECT TOTALS</b>			<b>112</b>	<b>2</b>	<b>2</b>	<b>2</b>	<b>3</b>	<b>3</b>	<b>2</b>	<b>2</b>	<b>17</b>

\*\*\* RIM ELEVATION REFERENCED AT FLOWLINE OF INLET

\*\*\* MIS INLETS COVERS SHALL BE FLAT

\*\*\* ITEMS FOUND ELSEWHERE IN PLAN

Addendum No. 1  
ID 5843-00-70  
Revised Sheet 36  
February 3, 2015

CONSTRUCTION STAKING STRUCTURE LAYOUT

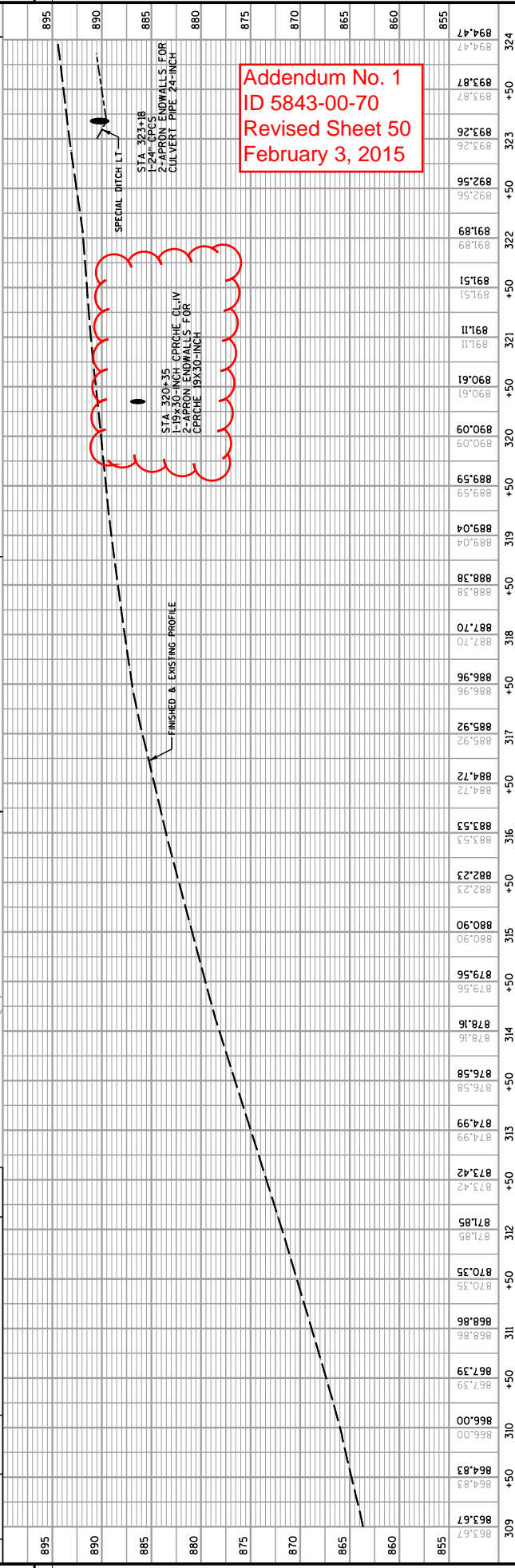
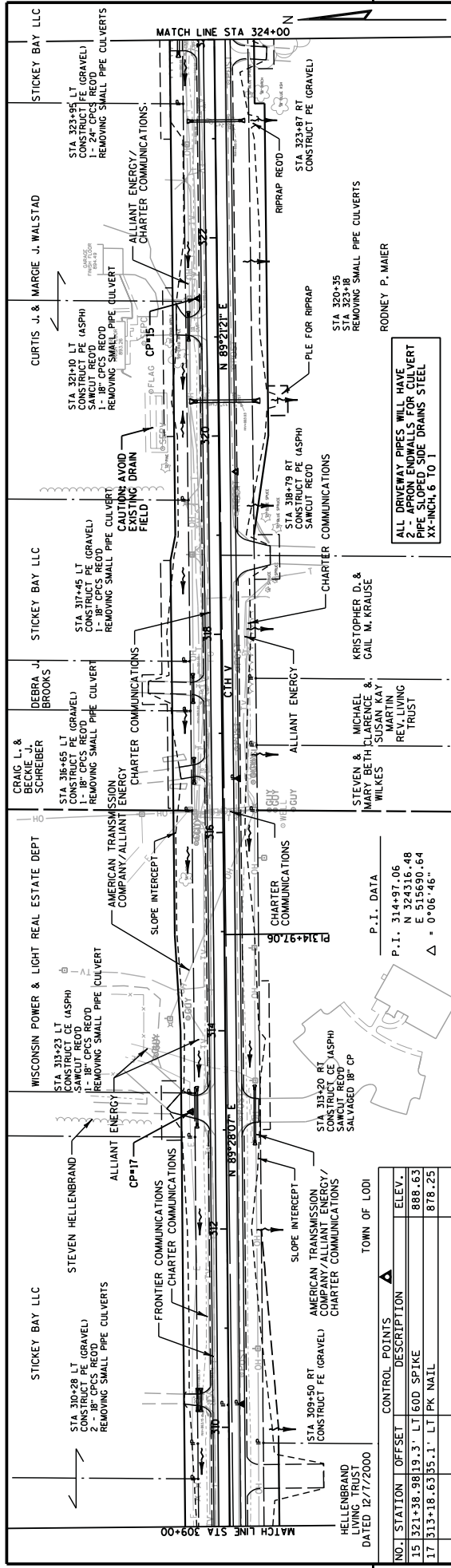
BID ITEM	STATION	STRUCTURE	LS
650.6500.01	295+80	B-11-0162	1
650.6500.02	369+29	C-11-2050	1
650.6500.03	379+51	B-11-0163	1

SAWING ASPHALT

STATION	ROADWAY	LF
253+50	CTH V	24
260+00	CTH V	11
261+44	CTH V	12
265+80	CTH V	12
268+18	CTH V	15
313+20	CTH V	24
313+20	CTH V	24
318+78	CTH V	20
321+11	CTH V	32
331+82	CTH V	11
332+00	CTH V	14
334+69	CTH V	11
339+73	CTH V	11
362+90	CTH V	17
48+18 - 55+54	CTH J - CTH V/CTH J	750
44+00	RYAN RD	21
46+38	RYAN RD	23
<b>TOTAL</b>		<b>1032</b>

CONSTRUCTION STAKING

STATION TO STATION	ROADWAY	LOCATION	STORM SEWER	SUBGRADE	BASE	CURB & GUTTER	PIPE CULVERTS	SUPPLEMENTAL CONTROL	SLOPE STAKES	REMARKS
LF	LF	LF	EACH	LF	LF	LF	EACH	LS	LF	
253+50 - 385+82	CTH V	RT & LT	2	13232	4015			1	13232	
260+04	CTH V	RT				1				
261+43	CTH V	RT				1				
263+50 - 271+00	CTH V	RT			750					
268+40	CTH V	RT & LT	2							INLET & ENDWALL
277+50	CTH V	RT-LT				1				
290+00	CTH V	RT				1				
299+54	CTH V	LT				1				
307+49	CTH V	RT-LT				1				
310+28	CTH V	LT				2				
313+20	CTH V	RT				1				
313+23	CTH V	LT				1				
316+65	CTH V	LT				1				
317+45	CTH V	LT				1				
320+35	CTH V	RT-LT				1				
321+10	CTH V	LT				1				
323+18	CTH V	RT-LT				1				
323+95	CTH V	LT				1				
327+00	CTH V	LT				1				
330+72	CTH V	LT				1				
331+81	CTH V	LT				1				
334+90	CTH V	RT-LT				1				
339+70	CTH V	LT				1				
342+20	CTH V	RT-LT	2							INLET & ENDWALL
342+45 - 351+50	CTH V	LT			905					
351+57	CTH V	LT				1				
356+15	CTH V	RT-LT				1				
361+33	CTH V	RT				1				
361+50	CTH V	RT-LT				1				
363+25	CTH V	LT			175					
364+98 - 48+87	CTH V - CTH J	RT-LT			81					
385+40 - 385+41	CTH V	RT			127					
385+45 - 50+55	CTH V - CTH V/CTH J	LT			58					
44+00 - 49+70	RYAN RD	RT-LT		570	570				570	
10+30 - 11+58	LANG RD	RT-LT		128	128				128	
46+30	RYAN RD	LT				1				
53+33	CTH V/CTH J	LT				1				
<b>TOTALS</b>			<b>4</b>	<b>13930</b>	<b>4713</b>	<b>2096</b>	<b>27</b>	<b>1</b>	<b>13930</b>	



Addendum No. 1  
ID 5843-00-70  
Revised Sheet 50  
February 3, 2015

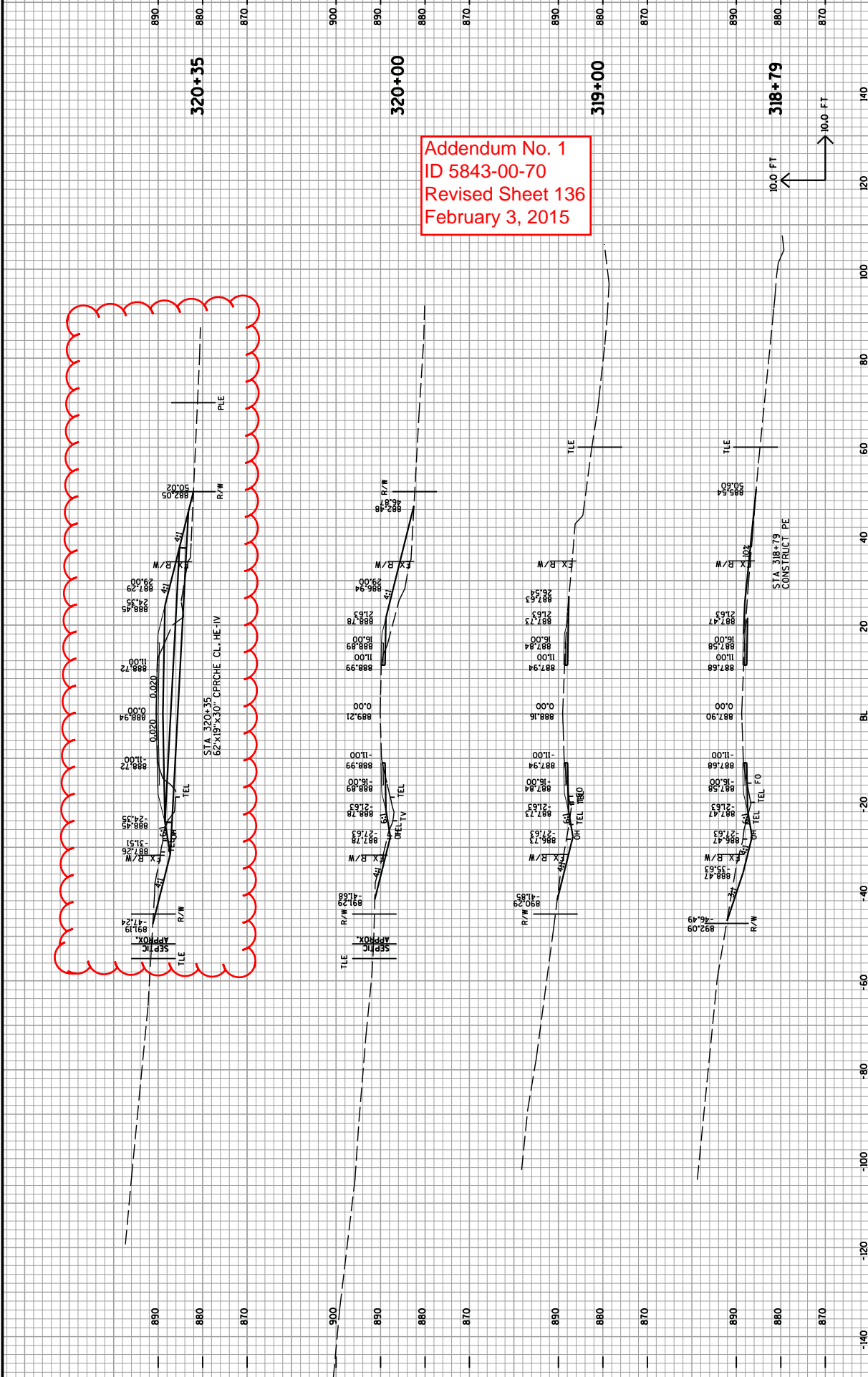
NO.	STATION	OFFSET	DESCRIPTION	ELEV.
15	312+38.98	19.3'	LT 60D SPIKE	888.83
17	313+18.63	35.1'	LT PK NAIL	878.25

P.I. DATA  
P.I. 314+97.06  
N 324316.48  
E 515690.64  
Δ = 0°06'46"

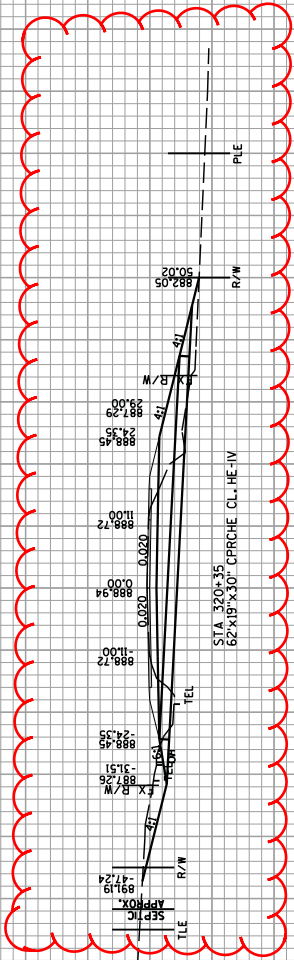
ALL DRIVEWAY PIPES WILL HAVE  
2 - APRON ENDWALLS FOR CULVERT  
PIPE SLOPED SIDE DRAINS STEEL  
XX-INCH, 6 TO 1

STATION	ELEVATION	STATION	ELEVATION	STATION	ELEVATION	STATION	ELEVATION
895		890		885		880	
875		870		865		860	
855		309 +50	863.67	310 +50	865.00	311 +50	867.39
		312 +50	870.35	313 +50	874.99	314 +50	876.58
		315 +50	880.90	316 +50	883.53	317 +50	885.92
		318 +50	887.70	319 +50	889.04	320 +50	890.61
		321 +50	891.11	322 +50	891.51	323 +50	892.26
		324 +50	894.47				

PROJECT NO: 5843-00-70  
COUNTY: COLUMBIA  
HWY: CTH V  
PLAN & PROFILE  
SHEET 50  
E  
FILE NAME : T:\410520\DOWN\0520050121.dwg  
PLOT DATE : 1/28/2015  
PLOT BY : ATRES-EC  
PLOT NAME :  
PLOT SCALE : 1:100  
WISDOT/CADD SHEET 45



Addendum No. 1  
 ID 5843-00-70  
 Revised Sheet 136  
 February 3, 2015





SCHEDULE OF ITEMS

REVISED:

CONTRACT:  
20150210010

PROJECT(S):  
5843-00-70

FEDERAL ID(S):  
WISC 2015088

CONTRACTOR : \_\_\_\_\_

LINE NO	ITEM DESCRIPTION	APPROX. QUANTITY AND UNITS	UNIT PRICE		BID AMOUNT	
			DOLLARS	CTS	DOLLARS	CTS

SECTION 0001 Roadway Items

0010	201.0105 Clearing	21.000 STA	.	.	.	.
0020	201.0120 Clearing	101.000 ID	.	.	.	.
0030	201.0205 Grubbing	21.000 STA	.	.	.	.
0040	201.0220 Grubbing	101.000 ID	.	.	.	.
0050	203.0100 Removing Small Pipe Culverts	34.000 EACH	.	.	.	.
0060	203.0500.S Removing Old Structure Over Waterway (station) 01. 295+80	LUMP	LUMP	.	.	.
0070	203.0500.S Removing Old Structure Over Waterway (station) 02. 369+29	LUMP	LUMP	.	.	.
0080	203.0500.S Removing Old Structure Over Waterway (station) 03. 379+51	LUMP	LUMP	.	.	.
0090	204.0170 Removing Fence	2,400.000 LF	.	.	.	.
0100	204.0180 Removing Delineators and Markers	20.000 EACH	.	.	.	.

## SCHEDULE OF ITEMS

REVISED:

CONTRACT:  
20150210010PROJECT(S):  
5843-00-70FEDERAL ID(S):  
WISC 2015088

CONTRACTOR : \_\_\_\_\_

LINE NO	ITEM DESCRIPTION	APPROX. QUANTITY AND UNITS	UNIT PRICE		BID AMOUNT	
			DOLLARS	CTS	DOLLARS	CTS
0110	205.0100 Excavation Common	41,283.000 CY	.	.	.	.
0120	205.0200 Excavation Rock	102.000 CY	.	.	.	.
0140	210.0100 Backfill Structure	1,115.000 CY	.	.	.	.
0150	213.0100 Finishing Roadway (project) 01. 5843-00-70	1.000 EACH	.	.	.	.
0160	214.0100 Obliterating Old Road	8.400 STA	.	.	.	.
0170	305.0110 Base Aggregate Dense 3/4-Inch	3,317.000 TON	.	.	.	.
0180	305.0120 Base Aggregate Dense 1 1/4-Inch	18,100.000 TON	.	.	.	.
0190	305.0502.S Shaping Roadway	92.000 STA	.	.	.	.
0200	325.0100 Pulverize and Relay	24,700.000 SY	.	.	.	.
0210	440.4410.S Incentive IRI Ride	10,024.000 DOL	1.00000	.	10024.00	.
0220	455.0105 Asphaltic Material PG58-28	791.000 TON	.	.	.	.

## SCHEDULE OF ITEMS

REVISED:

CONTRACT:  
20150210010PROJECT(S):  
5843-00-70FEDERAL ID(S):  
WISC 2015088

CONTRACTOR : \_\_\_\_\_

LINE NO	ITEM DESCRIPTION	APPROX. QUANTITY AND UNITS	UNIT PRICE		BID AMOUNT	
			DOLLARS	CTS	DOLLARS	CTS
0230	455.0605 Tack Coat	3,572.000 GAL	.		.	
0240	460.1101 HMA Pavement Type E-1	14,328.000 TON	.		.	
0250	460.2000 Incentive Density HMA Pavement	9,480.000 DOL	1.00000		9480.00	
0260	465.0120 Asphaltic Surface Driveways and Field Entrances	156.000 TON	.		.	
0270	465.0305 Asphaltic Surface Safety Islands	11.000 TON	.		.	
0280	465.0315 Asphaltic Flumes	42.000 SY	.		.	
0290	465.0450 Asphaltic Intersection Rumble Strips	75.000 SY	.		.	
0300	504.0900 Concrete Masonry Endwalls	40.000 CY	.		.	
0310	520.1024 Apron Endwalls for Culvert Pipe 24-Inch	11.000 EACH	.		.	
0320	520.1030 Apron Endwalls for Culvert Pipe 30-Inch	2.000 EACH	.		.	
0330	520.7000 Cleaning Culvert Pipes	1.000 EACH	.		.	

## SCHEDULE OF ITEMS

REVISED:

CONTRACT:  
20150210010PROJECT(S):  
5843-00-70FEDERAL ID(S):  
WISC 2015088

CONTRACTOR : \_\_\_\_\_

LINE NO	ITEM DESCRIPTION	APPROX. QUANTITY AND UNITS	UNIT PRICE		BID AMOUNT	
			DOLLARS	CTS	DOLLARS	CTS
0340	520.8000 Concrete Collars for Pipe	1.000 EACH	.		.	
0350	521.0118 Culvert Pipe Corrugated Steel 18-Inch	282.000 LF	.		.	
0360	521.0124 Culvert Pipe Corrugated Steel 24-Inch	514.000 LF	.		.	
0370	521.0130 Culvert Pipe Corrugated Steel 30-Inch	58.000 LF	.		.	
0380	521.0764 Pipe Arch Corrugated Steel 64x43-Inch	466.000 LF	.		.	
0390	521.1518 Apron Endwalls for Culvert Pipe Sloped Side Drains Steel 18-Inch 6 to 1	22.000 EACH	.		.	
0400	521.1524 Apron Endwalls for Culvert Pipe Sloped Side Drains Steel 24-Inch 6 to 1	16.000 EACH	.		.	
0410	522.0124 Culvert Pipe Reinforced Concrete Class III 24-Inch	112.000 LF	.		.	
0420	522.1024 Apron Endwalls for Culvert Pipe Reinforced Concrete 24-Inch	2.000 EACH	.		.	
0430	524.0118 Culvert Pipe Salvaged 18-Inch	56.000 LF	.		.	

## SCHEDULE OF ITEMS

REVISED:

CONTRACT:  
20150210010PROJECT(S):  
5843-00-70FEDERAL ID(S):  
WISC 2015088

CONTRACTOR : \_\_\_\_\_

LINE NO	ITEM DESCRIPTION	APPROX. QUANTITY AND UNITS	UNIT PRICE		BID AMOUNT	
			DOLLARS	CTS	DOLLARS	CTS
0440	524.0618 Apron Endwalls for Culvert Pipe Salvaged 18-Inch	2.000 EACH	.		.	
0450	601.0120 Concrete Curb Type J	127.000 LF	.		.	
0460	601.0557 Concrete Curb & Gutter 6-Inch Sloped 36-Inch Type D	1,969.000 LF	.		.	
0470	606.0200 Riprap Medium	145.000 CY	.		.	
0480	606.0300 Riprap Heavy	185.000 CY	.		.	
0490	611.0627 Inlet Covers Type HM	1.000 EACH	.		.	
0500	611.0642 Inlet Covers Type MS	2.000 EACH	.		.	
0510	611.3230 Inlets 2x3-FT	1.000 EACH	.		.	
0520	611.3902 Inlets Median 2 Grate	1.000 EACH	.		.	
0530	619.1000 Mobilization	1.000 EACH	.		.	
0540	624.0100 Water	480.000 MGAL	.		.	

## SCHEDULE OF ITEMS

REVISED:

CONTRACT:  
20150210010PROJECT(S):  
5843-00-70FEDERAL ID(S):  
WISC 2015088

CONTRACTOR : \_\_\_\_\_

LINE NO	ITEM DESCRIPTION	APPROX. QUANTITY AND UNITS	UNIT PRICE		BID AMOUNT	
			DOLLARS	CTS	DOLLARS	CTS
0550	625.0500 Salvaged Topsoil	51,602.000 SY	.		.	
0560	627.0200 Mulching	82,950.000 SY	.		.	
0570	628.1504 Silt Fence	22,140.000 LF	.		.	
0580	628.1520 Silt Fence Maintenance	22,140.000 LF	.		.	
0590	628.1905 Mobilizations Erosion Control	4.000 EACH	.		.	
0600	628.1910 Mobilizations Emergency Erosion Control	6.000 EACH	.		.	
0610	628.2002 Erosion Mat Class I Type A	14,312.000 SY	.		.	
0620	628.2004 Erosion Mat Class I Type B	470.000 SY	.		.	
0630	628.7005 Inlet Protection Type A	4.000 EACH	.		.	
0640	628.7015 Inlet Protection Type C	3.000 EACH	.		.	
0650	628.7504 Temporary Ditch Checks	995.000 LF	.		.	

## SCHEDULE OF ITEMS

REVISED:

CONTRACT:  
20150210010PROJECT(S):  
5843-00-70FEDERAL ID(S):  
WISC 2015088

CONTRACTOR : \_\_\_\_\_

LINE NO	ITEM DESCRIPTION	APPROX. QUANTITY AND UNITS	UNIT PRICE		BID AMOUNT	
			DOLLARS	CTS	DOLLARS	CTS
0660	628.7555 Culvert Pipe Checks	85.000 EACH	.	.	.	.
0670	628.7570 Rock Bags	324.000 EACH	.	.	.	.
0680	629.0210 Fertilizer Type B	66.000 CWT	.	.	.	.
0690	630.0120 Seeding Mixture No. 20	2,250.000 LB	.	.	.	.
0700	630.0140 Seeding Mixture No. 40	460.000 LB	.	.	.	.
0710	630.0200 Seeding Temporary	2,250.000 LB	.	.	.	.
0720	633.5200 Markers Culvert End	17.000 EACH	.	.	.	.
0730	634.0410 Posts Wood 4x4-Inch X 10-FT	1.000 EACH	.	.	.	.
0740	634.0614 Posts Wood 4x6-Inch X 14-FT	6.000 EACH	.	.	.	.
0750	634.0616 Posts Wood 4x6-Inch X 16-FT	13.000 EACH	.	.	.	.
0760	634.0618 Posts Wood 4x6-Inch X 18-FT	1.000 EACH	.	.	.	.

## SCHEDULE OF ITEMS

REVISED:

CONTRACT:  
20150210010PROJECT(S):  
5843-00-70FEDERAL ID(S):  
WISC 2015088

CONTRACTOR : \_\_\_\_\_

LINE NO	ITEM DESCRIPTION	APPROX. QUANTITY AND UNITS	UNIT PRICE		BID AMOUNT	
			DOLLARS	CTS	DOLLARS	CTS
0770	637.0620 Sign Flags Permanent Type II	4.000 EACH	.	.	.	.
0780	637.2210 Signs Type II Reflective H	105.500 SF	.	.	.	.
0790	637.2230 Signs Type II Reflective F	84.750 SF	.	.	.	.
0800	638.2602 Removing Signs Type II	31.000 EACH	.	.	.	.
0810	638.3000 Removing Small Sign Supports	18.000 EACH	.	.	.	.
0820	642.5001 Field Office Type B	1.000 EACH	.	.	.	.
0830	643.0100 Traffic Control (project) 01. 5843-00-70	1.000 EACH	.	.	.	.
0840	643.0300 Traffic Control Drums	300.000 DAY	.	.	.	.
0850	643.0420 Traffic Control Barricades Type III	1,055.000 DAY	.	.	.	.
0860	643.0705 Traffic Control Warning Lights Type A	2,110.000 DAY	.	.	.	.
0870	643.0900 Traffic Control Signs	1,480.000 DAY	.	.	.	.



## SCHEDULE OF ITEMS

REVISED:

CONTRACT:  
20150210010PROJECT(S):  
5843-00-70FEDERAL ID(S):  
WISC 2015088

CONTRACTOR : \_\_\_\_\_

LINE NO	ITEM DESCRIPTION	APPROX. QUANTITY AND UNITS	UNIT PRICE		BID AMOUNT	
			DOLLARS	CTS	DOLLARS	CTS
0880	643.0920 Traffic Control Covering Signs Type II	1.000 EACH	.		.	
0890	643.2000 Traffic Control Detour (project) 01. 5843-00-70	1.000 EACH	.		.	
0900	643.3000 Traffic Control Detour Signs	10,030.000 DAY	.		.	
0910	645.0120 Geotextile Fabric Type HR	785.000 SY	.		.	
0920	646.0106 Pavement Marking Epoxy 4-Inch	47,005.000 LF	.		.	
0930	646.0126 Pavement Marking Epoxy 8-Inch	382.000 LF	.		.	
0940	646.0600 Removing Pavement Markings	611.000 LF	.		.	
0950	647.0566 Pavement Marking Stop Line Epoxy 18-Inch	67.000 LF	.		.	
0960	648.0100 Locating No-Passing Zones	2.500 MI	.		.	
0970	650.4000 Construction Staking Storm Sewer	4.000 EACH	.		.	
0980	650.4500 Construction Staking Subgrade	13,930.000 LF	.		.	

## SCHEDULE OF ITEMS

REVISED:

CONTRACT:  
20150210010PROJECT(S):  
5843-00-70FEDERAL ID(S):  
WISC 2015088

CONTRACTOR : \_\_\_\_\_

LINE NO	ITEM DESCRIPTION	APPROX. QUANTITY AND UNITS	UNIT PRICE		BID AMOUNT	
			DOLLARS	CTS	DOLLARS	CTS
0990	650.5000 Construction Staking Base	4,713.000 LF	.	.	.	.
1000	650.5500 Construction Staking Curb Gutter and Curb & Gutter	2,096.000 LF	.	.	.	.
1010	650.6000 Construction Staking Pipe Culverts	27.000 EACH	.	.	.	.
1020	650.6500 Construction Staking Structure Layout (structure) 01. B-11-0162	LUMP	LUMP	.	.	.
1030	650.6500 Construction Staking Structure Layout (structure) 02. C-11-2050	LUMP	LUMP	.	.	.
1040	650.6500 Construction Staking Structure Layout (structure) 03. B-11-0163	LUMP	LUMP	.	.	.
1050	650.9910 Construction Staking Supplemental Control (project) 01. 5843-00-70	LUMP	LUMP	.	.	.
1060	650.9920 Construction Staking Slope Stakes	13,930.000 LF	.	.	.	.
1070	690.0150 Sawing Asphalt	1,032.000 LF	.	.	.	.
1080	ASP.1T0A On-the-Job Training Apprentice at \$5.00/HR	300.000 HRS	5.00000	.	1500.00	.

## SCHEDULE OF ITEMS

REVISED:

CONTRACT:  
20150210010PROJECT(S):  
5843-00-70FEDERAL ID(S):  
WISC 2015088

CONTRACTOR : \_\_\_\_\_

LINE NO	ITEM DESCRIPTION	APPROX. QUANTITY AND UNITS	UNIT PRICE		BID AMOUNT	
			DOLLARS	CTS	DOLLARS	CTS
1090	ASP.1T0G On-the-Job Training Graduate at \$5. 00/HR	250.000 HRS	5.00000		1250.00	
1100	SPV.0090 Special 01. Pipe Arch Corrugated Steel 103x71-Inch	164.000 LF	.		.	
1110	204.0115 Removing Asphaltic Surface Butt Joints	254.000 SY	.		.	
1120	311.0110 Breaker Run	5,100.000 TON	.		.	
1130	523.0419 Culvert Pipe Reinforced Concrete Horizontal Elliptical Class HE-IV 19x30-Inch	62.000 LF	.		.	
1140	523.0519 Apron Endwalls for Culvert Pipe Reinforced Concrete Horizontal Elliptical 19x30-Inch	2.000 EACH	.		.	
	SECTION 0001 TOTAL				.	
	TOTAL BID				.	