



Wisconsin Department of Transportation

February 27, 2015

Division of Transportation Systems Development

Bureau of Project Development
4802 Sheboygan Avenue, Rm 601
P O Box 7916
Madison, WI 53707-7916

Telephone: (608) 266-1631
Facsimile (FAX): (608) 266-8459

NOTICE TO ALL CONTRACTORS:

Proposal #02: 1007-10-72
Illinois State Line - Madison
USH 51/ STH 73 Interchange
IH 39
Dane County

Letting of March 10, 2015

This is Addendum No. 1, which provides for the following:

Special Provisions

Revised Special Provisions	
Article No.	Description
3.	Prosecution and Progress

Added Special Provisions	
Article No.	Description
80.	Ice Hot Weather Concreting, Item 501.1000.S
81.	Pigmented Protective Surface Treatment, Item 502.3210.S

Schedule of Items

Revised Bid Item Quantities					
Bid Item	Item Description	Unit	Old Quantity	Revised Quantity	Proposal Total
502.3200	Protective Surface Treatment	SY	3,420	3,125	3,125
603.8000	Concrete Barrier Temporary Precast Delivered	LF	13,575	14,423	14,423
603.8125	Concrete Barrier Temporary Precast Installed	LF	19,975	20,823	20,823
614.0905	Crash Cushions Temporary	Each	12	11	11
715.0502	Incentive Strength Concrete Structures	DOL	2,412	9,780	9,780

Added Bid Item Quantities					
Bid Item	Item Description	Unit	Old Quantity	Revised Quantity	Proposal Total
501.1000.S	Ice Hot Weather Concreting	LB		12,225	12,225
502.3210.S	Pigmented Protective Surface Treatment	SY		295	295

Deleted Bid Item Quantities					
Bid Item	Item Description	Unit	Old Quantity	Revised Quantity	Proposal Total
646.0138	Preformed Thermoplastic 12-Inch White	LF	226	0	0

Plan Sheets

Revised Plan Sheets	
Plan Sheet	Plan Sheet Title (brief description of changes to sheet)
155	Traffic Control Overview – USH51/STH73 Stage 1 (Revised flagger note)
174	Traffic Control – I-39/90 Stage 2 (added Concrete Barrier Temporary Precast)
179	Traffic Control – USH 51/STH 73 Stage 2 (added Concrete Barrier Temporary Precast)
277	Miscellaneous Quantities (Revised notes)
289	Miscellaneous Quantities (Revised quantities for 603.8000, 603.8125, 614.0905)
291	Miscellaneous Quantities (Deleted Item 646.0138)
519	B-13-702 Quantities and General Notes (Added/revised items)
543	B-13-702 Aesthetic Details (Revised notes)

The responsibility for notifying potential subcontractors and suppliers of these changes remains with the prime contractor.

Sincerely,

Mike Coleman

Proposal Development Specialist
Proposal Management Section

ADDENDUM NO. 1

1007-10-72

February 27, 2015

Special Provisions

3. Prosecution and Progress.

Add the following after the 4th paragraph:

The business sign and connecting electric line owned by Truck Stop LLC, located at Ramp TC Station 605+25, is anticipated to be relocated on approximately April 15, 2015. The contractor shall work around the sign until it has been removed.

80. Ice Hot Weather Concreting, Item 501.1000.S.

Conform to standard spec 501.3.8.2 except the department will pay for ice at the contract unit price under the Ice Hot Weather Concreting bid item. This special provision only applies to work done under the following contract bid items:

Concrete Masonry Bridges	Concrete Masonry Retaining Walls
Concrete Masonry Bridges HES	Concrete Masonry Retaining Walls HES
Concrete Masonry Culverts	Concrete Masonry Endwalls
Concrete Masonry Culverts HES	Concrete Masonry Overlay Decks
High Performance Concrete (HPC) Masonry Structures	

Replace standard spec 501.4 and 501.5 with the following:

501.4 Measurement

- (1) The department will measure Ice Hot Weather Concreting by the pound acceptably completed, measured only if the conditions prescribed in 501.3.8.2 are met.

501.5 Payment

- (1) The department will pay for the measured quantity at the contract unit price under the following bid item:

ITEM NUMBER	DESCRIPTION	UNIT
501.1000.S	Ice Hot Weather Concreting	LB

- (2) Payment for Ice Hot Weather Concreting is full compensation for ice used to cool concrete placed in hot weather as specified in 501.3.8.2.

- (3) The department will not pay directly for the concrete specified under this section. Concrete is incidental to the various bid items using it. Payment under those bid items includes providing all materials, including aggregates and associated aggregate source testing, cement, fly ash, slag, and admixtures; for preparing, transporting, storing, protecting and curing concrete; and for contractor requirements related to testing specified in 501.3.10.

- (4) If required to remove and replace any concrete damaged by lack of proper protection. Perform this work at no expense to the department.

501-010 (20150121)

81. Pigmented Protective Surface Treatment, Item 502.3210.S.

A Description

This special provision describes providing a pigmented cure and seal compound to the inside and top faces of concrete parapets.

B Materials

Furnish a gray Cure and Seal Compound for Non-Trafficked Surfaces on Structural Masonry selected from the department's approved products list unless the contract specifies a different color.

C Construction

Apply pigmented cure and seal compound to the inside and top faces of concrete parapets after the required surface finish has been applied per 502.3.7. Apply before opening to traffic and before suspending work for the winter.

Ensure that the concrete is clean and dry, and that application equipment is clean and functioning properly. Air blast immediately before applying the pigmented cure and seal compound to remove all dust or loose particles. Follow the manufacturer's recommended coverage rate. If application at that rate in a single coat causes running, use two lighter coats allowed to dry between coats.

D Measurement

The department will measure Pigmented Protective Surface Treatment by the square yard, acceptably completed.

E Payment

The department will pay for the measured quantity at the contract unit price under the following bid item:

ITEM NUMBER	DESCRIPTION	UNIT
502.3210.S	Pigmented Protective Surface Treatment	SY

Payment is full compensation for providing the compound; including surface preparation and cleaning.

502-050 (20141107)

Schedule of Items

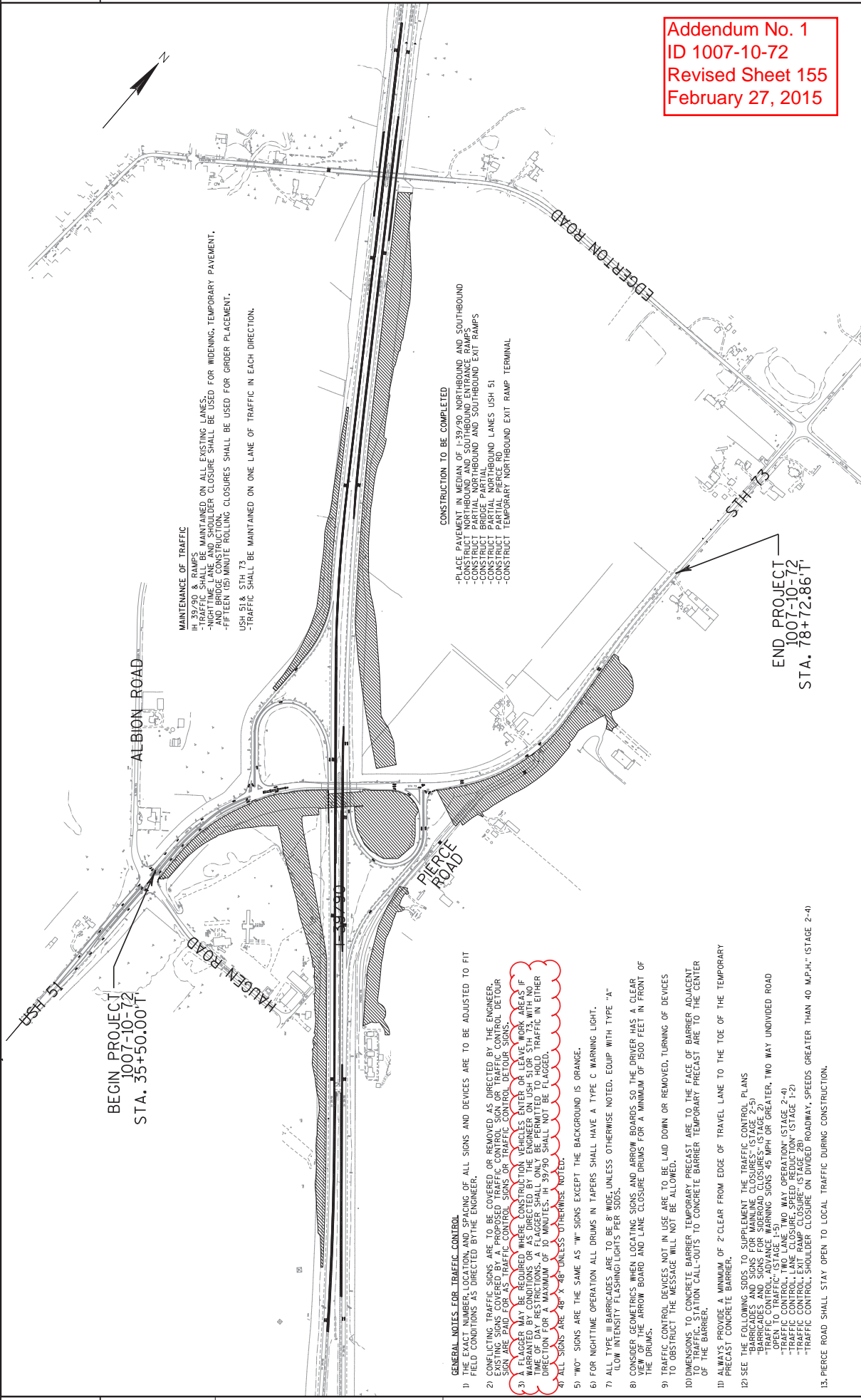
Attached, dated February 27, 2015, are the revised Schedule of Items Pages 6, 10, 12, 18, 26, and 29.

Plan Sheets

The following 8½ x 11-inch sheets are attached and made part of the plans for this proposal:

Revised: 155, 174, 179, 277, 289, 291, 519, 543.

END OF ADDENDUM



Addendum No. 1
 ID 1007-10-72
 Revised Sheet 155
 February 27, 2015

MAINTENANCE OF TRAFFIC
 I-39/30 SHALL BE MAINTAINED ON ALL EXISTING LANES.
 NIGHTTIME LANE AND SHOULDER CLOSURE SHALL BE USED FOR WIDENING, TEMPORARY PAVEMENT,
 AND BRIDGE CONSTRUCTION.
 FIFTEEN (15) MINUTE ROLLING CLOSURES SHALL BE USED FOR ORDER PLACEMENT.
 USH 51 & STH 73
 -TRAFFIC SHALL BE MAINTAINED ON ONE LANE OF TRAFFIC IN EACH DIRECTION.

CONSTRUCTION TO BE COMPLETED
 -PLACE PAVEMENT IN MEDIAN OF I-39/30, NORTHBOUND AND SOUTHBOUND
 -CONSTRUCT PARTIAL NORTHBOUND AND SOUTHBOUND EXIT RAMP
 -CONSTRUCT BRIDGE PARTIAL NORTHBOUND AND SOUTHBOUND EXIT RAMP
 -CONSTRUCT PARTIAL NORTHBOUND AND SOUTHBOUND LANES USH 51
 -CONSTRUCT PARTIAL NORTHBOUND AND SOUTHBOUND LANES STH 73
 -CONSTRUCT TEMPORARY NORTHBOUND EXIT RAMP TERMINAL

END PROJECT
 1007-10-72
 STA. 78+72.86'

- GENERAL NOTES FOR TRAFFIC CONTROL:**
- 1) THE EXACT NUMBER, LOCATION, AND SPACING OF ALL SIGNS AND DEVICES ARE TO BE ADJUSTED TO FIT FIELD CONDITIONS AS DIRECTED BY THE ENGINEER.
 - 2) CONFLICTING TRAFFIC SIGNS ARE TO BE COVERED OR REMOVED AS DIRECTED BY THE ENGINEER. EXISTING SIGNS COVERED BY A PROPOSED TRAFFIC CONTROL SIGN OR TRAFFIC CONTROL DETOUR SIGN ARE PAID FOR AS TRAFFIC CONTROL SIGNS OR TRAFFIC CONTROL DETOUR SIGNS.
 - 3) FLAGGER MAY BE REQUIRED WHERE CONSTRUCTION VEHICLES ENTER OR LEAVE WORK AREAS IF WARRANTED BY CONDITIONS OR AS DIRECTED BY THE ENGINEER ON USH 51 OR STH 73, WITH NO TIME OF DAY RESTRICTIONS. A FLAGGER SHALL ONLY BE PERMITTED TO HOLD TRAFFIC IN EITHER DIRECTION FOR A MAXIMUM OF 15 MINUTES. IN I-39/30 SHALL NOT BE FLAGGED.
 - 4) ALL SIGNS ARE 48" X 48" UNLESS OTHERWISE NOTED.
 - 5) "W" SIGNS ARE THE SAME AS "W" SIGNS EXCEPT THE BACKGROUND IS ORANGE.
 - 6) FOR NIGHTTIME OPERATION ALL DRUMS IN TAPERS SHALL HAVE A TYPE C WARNING LIGHT.
 - 7) ALL TYPE III BARRICADES ARE TO BE 8' WIDE, UNLESS OTHERWISE NOTED. EQUIP WITH TYPE "A" (LOW INTENSITY FLASHING) LIGHTS PER SDDS.
 - 8) CONSIDER GEOMETRICS WHEN LOCATING SIGNS AND ARROW BOARDS SO THE DRIVER HAS A CLEAR VIEW OF THE ARROW BOARD AND LANE CLOSURE DRUMS FOR A MINIMUM OF 1500 FEET IN FRONT OF THE DRUMS.
 - 9) TRAFFIC CONTROL DEVICES NOT IN USE ARE TO BE LAID DOWN OR REMOVED, TURNING OF DEVICES TO OBSTRUCT THE MESSAGE WILL NOT BE ALLOWED.
 - 10) DIMENSIONS TO CONCRETE BARRIER TEMPORARY PRECAST ARE TO THE FACE OF BARRIER ADJACENT TO TRAFFIC. STATION CALL-OUTS TO CONCRETE BARRIER TEMPORARY PRECAST ARE TO THE CENTER OF THE BARRIER.
 - 11) ALWAYS PROVIDE A MINIMUM OF 2' CLEAR FROM EDGE OF TRAVEL LANE TO THE TOE OF THE TEMPORARY PRECAST CONCRETE BARRIER.
 - 12) SEE THE FOLLOWING SDDS TO SUPPLEMENT THE TRAFFIC CONTROL PLANS:
 -"SDDS FOR TRAFFIC CONTROL DEVICES"
 -"BARRICADES AND SIGNS FOR SHOULDERS"
 -"TRAFFIC CONTROL- ADVANCE WARNING SIGNS 45 MPH OR GREATER, TWO WAY UNDIVIDED ROAD"
 -"OPEN TO TRAFFIC" (STAGE 1-5)
 -"TRAFFIC CONTROL- LANE CLOSURE, SPEED REDUCTION" (STAGE 2-4)
 -"TRAFFIC CONTROL- LANE CLOSURE, SPEED REDUCTION" (STAGE 1-2)
 -"TRAFFIC CONTROL- EXIT RAMP CLOSURE" (STAGE 2B)
 -"TRAFFIC CONTROL- SHOULDER CLOSURE ON DIVIDED ROADWAY, SPEEDS GREATER THAN 40 M.P.H." (STAGE 2-4)
 13. PIERCE ROAD SHALL STAY OPEN TO LOCAL TRAFFIC DURING CONSTRUCTION.

PROJECT NO: 1007-10-72	HWY: USH 51/STH 73	COUNTY: DANE	TRAFFIC CONTROL OVERVIEW - USH51/STH 73 STAGE 1	SHEET 155	E
FILE NAME : P:\N\TX\4739_39_DP_139.D\AN\ENG\39D\10071001\10071072_76\Sheet\PI\026101_s10v-Addend01.dgn			PLOT DATE : 2/24/2015		PLOT NAME :
			PLOT SCALE : 1:1600		WSDOT/CADD SHEET 42

LEGEND

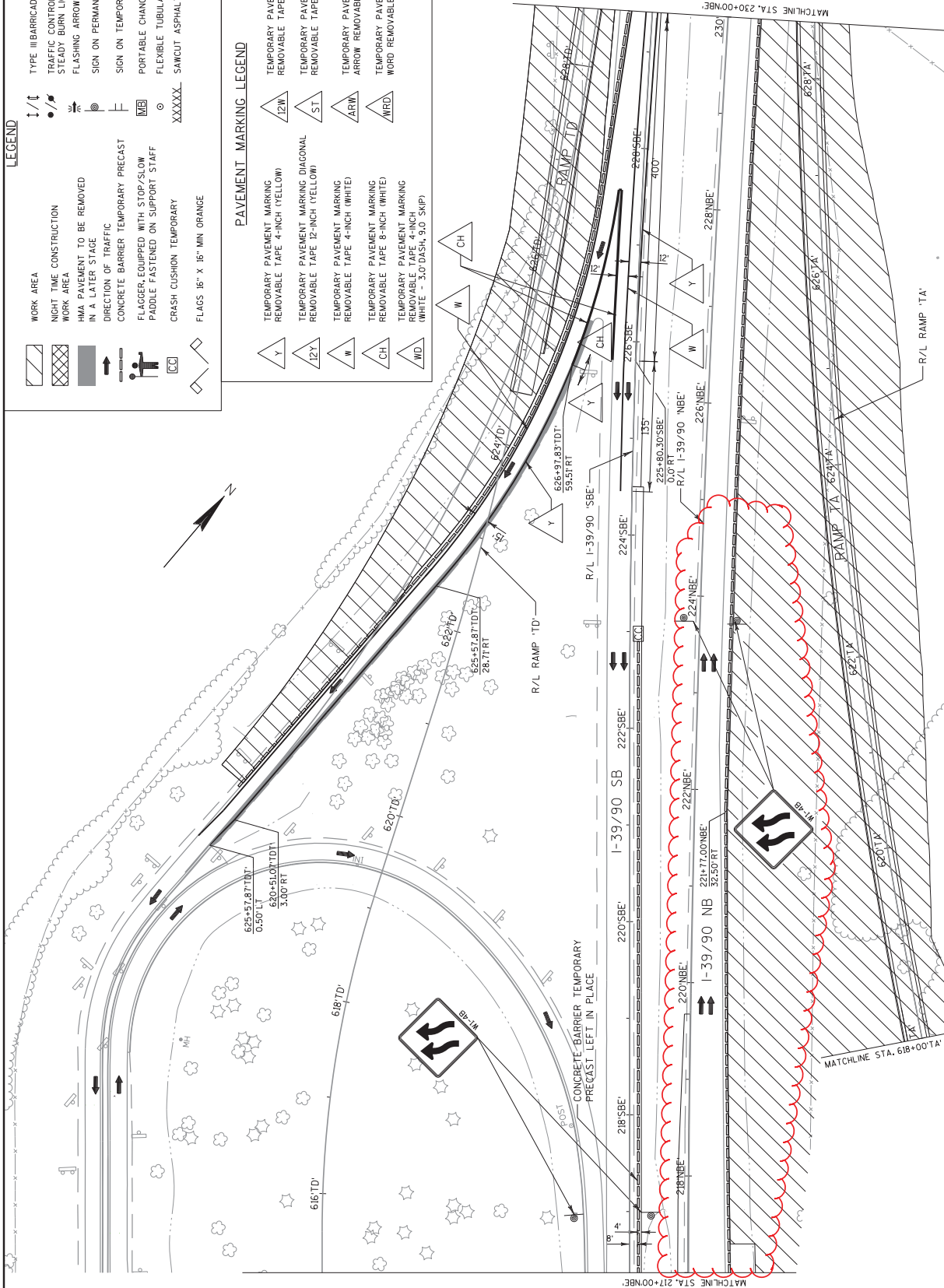
- WORK AREA
- NIGHT TIME CONSTRUCTION
- WORK AREA
- HMA PAVEMENT TO BE REMOVED
- DIRECTION OF TRAFFIC
- CONCRETE BARRIER TEMPORARY PRECAST
- FLAGGER, EQUIPPED WITH STOP/SLOW
- PALETTE FASTENED ON SUPPORT STAFF
- CRASH CUSHION TEMPORARY
- FLAHS 16" X 16" MIN. ORANGE

- TYPE BARRICADE/WITH ATTACHED SIGN
- TRAFFIC CONTROL DRUM/WITH TYPE C STEADY BURN LIGHT
- FLASHING ARROW BOARD
- SIGN ON PERMANENT SUPPORT
- SIGN ON TEMPORARY SUPPORT
- PORTABLE CHANGEABLE MESSAGE BOARD
- FLEXIBLE TUBULAR MARKER
- XXXXXX SAWCUT ASPHALT

PAVEMENT MARKING LEGEND

- TEMPORARY PAVEMENT MARKING REMOVABLE TAPE 4-INCH (YELLOW)
- TEMPORARY PAVEMENT MARKING DIAGONAL REMOVABLE TAPE 12-INCH (YELLOW)
- TEMPORARY PAVEMENT MARKING REMOVABLE TAPE 4-INCH (WHITE)
- TEMPORARY PAVEMENT MARKING REMOVABLE TAPE 8-INCH (WHITE)
- TEMPORARY PAVEMENT MARKING REMOVABLE TAPE 12-INCH (WHITE)
- TEMPORARY PAVEMENT MARKING STOP LINE
- TEMPORARY PAVEMENT MARKING ARROW REMOVABLE TAPE
- TEMPORARY PAVEMENT MARKING WORD REMOVABLE TAPE

Addendum No. 1
 ID 1007-10-72
 Revised Sheet 174
 February 27, 2015



EARTHWORK SUMMARY

STAGE/DIVISION	LOCATION	STATION	EXCAVATION COMMON (1)		SALVAGED/ UNUSABLE MATERIAL (4)	AVAILABLE MATERIAL (5)	EXCAVATION (6)	REDUCED MARSH FACTOR (7)	REDUCED EBS IN FILL (8) FACTOR (0.80)	EXPANDED MARSH FACTOR (9)	EXPANDED EBS IN FILL (8) FACTOR (0.80)	EXPANDED MARSH FACTOR (9)	EXPANDED EBS IN FILL (8) FACTOR (0.80)	UNEXPANDED FACTOR (11)	MASS ORDNATE	WASTE	BORROW	
			CUT (2)	CY														
1	USH 51	35+50 - 47+90 T	8,478	0	0	0	14,533	5,120	0	21,729	0	14,533	5,120	51,352	-53,726	-	-	
	RAMP TA	614+60 - 654+33 TA	119,051	0	0	0	0	0	0	0	0	0	0	17,423	97,266	-	-	
	RAMP TB	594+56 - 613+00 TB	9,276	0	0	0	0	4,140	0	10,350	0	0	0	39,907	-40,609	-	-	
	RAMP TC	581+56 - 613+06 TC	15,619	0	0	0	0	0	0	0	0	0	0	63,765	-66,412	-	-	
	NE IH 39	181+00 - 261+21 NBE	3,469	0	0	0	0	0	0	0	0	0	0	280	3,059	-	-	
	SR IH 39	179+00 - 267+00 SBE	6,870	142	0	0	0	0	0	0	0	0	0	3,728	2,210	-	-	
	PIERCE ROAD	100+20 - 133+09 PR	15,366	11,366	0	0	0	12,860	0	9,093	0	0	0	0	10,981	13,820	-	-
		STAGE 1 SUBTOTALS	178,506	11,366	264	0	178,242	12,860	0	32,149	0	0	0	0	207,951	232,048	0	53,806
		USH 51	35+50 - 47+90 T	641	0	208	433	0	0	0	0	0	0	0	3,660	-4,142	-	-
		RAMP TA	614+60 - 654+33 TA	11,250	0	403	10,847	0	0	0	0	0	0	0	28,570	-24,886	-	-
2	RAMP TB	594+56 - 613+00 TB	2,228	0	0	0	0	0	0	0	0	0	0	607	799	-	-	
	RAMP TC	581+56 - 613+06 TC	3,170	0	190	3,180	0	7,827	0	12,719	0	0	0	10,693	-3,582	-	-	
	RAMP TD	567+56 - 614+27 TBT	4	0	4	0	0	0	0	0	0	0	0	22,524	-2,565	-	-	
	RAMP TE	597+56 - 613+00 TE	2,358	0	0	0	0	0	0	0	0	0	0	2,639	-2,639	-	-	
	RAMP TF	613+00 - 626+02 TD	145	0	128	17	0	0	0	0	0	0	0	778	-847	-	-	
	RAMP TD	619+22 - 626+50 TD	488	0	17	461	0	0	0	0	0	0	0	382	453	-	-	
	RAMP TD	628+88 - 638+00 TD	1,564	0	0	1,564	0	0	0	0	0	0	0	4,251	-3,749	-	-	
	NE IH 39	213+00 - 261+21 NBE	13,106	0	0	0	0	0	0	0	0	0	0	3,479	4,349	-	-	
	SR IH 39	212+50 - 213+00 SBE	0	0	0	0	0	0	0	0	0	0	0	281	351	-	-	
	PIERCE ROAD	100+20 - 133+09 PR	36,094	10,443	841	35,254	2,487	1,492	8,354	0	13,776	0	856	506	11,922	-50,753	0	50,753
3	USH 51	35+50 - 48+06 T	8,007	0	929	7,079	2,487	0	3,720	0	0	0	0	3,673	4,592	-	-	
	RAMP TA	619+82 - 651+33 TA	4,445	0	0	0	0	0	0	0	0	0	0	426	533	-	-	
	RAMP TB	610+10 - 613+00 TB	792	0	0	0	0	0	0	0	0	0	0	0	792	-	-	
	RAMP TC	597+56 - 613+06 TC	0	0	0	0	0	0	0	0	0	0	0	0	0	-	-	
	RAMP TD	612+98 - 629+02 TD	22,415	0	128	22,286	0	0	0	0	0	0	0	35,619	-44,774	-	-	
	RAMP TE	613+00 - 626+02 TE	2,786	0	8	2,786	0	0	0	0	0	0	0	0	0	-	-	
	RAMP TF	613+00 - 626+02 TF	2,786	0	8	2,786	0	0	0	0	0	0	0	0	0	-	-	
	SR IH 39	181+04 - 266+27 SBE	9,588	0	0	9,588	0	0	0	0	0	0	0	243	9,284	-	-	
		STAGE 3 SUBTOTALS	58,043	0	1,086	56,958	2,487	1,492	0	3,720	0	0	0	0	51,744	-5,857	0	5,857
	4	USH 51	35+50 - 47+90 T	71	0	0	71	0	0	0	0	0	0	0	732	-844	-	-
RAMP TB		594+56 - 613+00 TB	4,043	0	0	4,043	0	0	0	0	0	0	0	11,639	-10,504	-	-	
RAMP TD		612+98 - 629+02 TD	31,036	0	150	30,886	0	0	0	0	0	0	0	3,658	45,72	-	-	
NE IH 39		181+04 - 266+27 NBE	9,056	0	0	9,056	0	0	0	0	0	0	0	487	8,434	-	-	
		STAGE 4 SUBTOTALS	44,205	0	150	44,055	0	0	0	0	0	0	0	0	16,525	23,399	0	0
USH 51		35+50 - 47+90 T	3,699	0	145	3,554	0	0	0	0	0	0	0	0	0	0	-	-
RAMP TB		594+56 - 613+00 TB	2,097	0	296	1,801	0	0	0	0	0	0	0	0	241	301	-	-
PIERCE ROAD		100+20 - 133+09 PR	18,723	1,396	571	23,608	0	14,352	1,109	1,802	889	1,728	1,100	1,400	18,437	23,914	0	0
		STAGE 5 SUBTOTALS	24,598	1,396	911	23,687	0	14,352	1,109	1,802	889	1,728	1,100	1,400	354,147	402,936	0	0
		PROJECT TOTALS	341,358	23,195	2,911	338,447	2,487	14,352	16,356	36,979	30,153	30,153	402,936	463,102	354,147	473,713	110,416	0

1) COMMON EXCAVATIONS IS THE SUM OF THE CUT AND EBS EXCAVATION COLUMNS. ITEM NUMBER 205.0100
 2) SALVAGED/UNUSABLE MATERIAL IS INCLUDED IN CUT.
 3) EBS EXCAVATION TO BE BACKFILLED WITH BACKFILL GRANULAR.
 4) SALVAGED/UNUSABLE PAVEMENT MATERIAL.
 5) AVAILABLE MATERIAL = CUT - SALVAGED/UNUSABLE PAVEMENT MATERIAL.
 6) MARSH EXCAVATION - TO BE BACKFILLED WITH SELECT CRUSHED MATERIAL OR BACKFILL GRANULAR.
 7) REDUCED MARSH IN FILL - EXCAVATED MARSH MATERIAL IS USABLE IN FILLS OUTSIDE THE 2:1 SLOPE IN STAGES ONE THROUGH FOUR. MARSH IN FILL REDUCTION FACTOR = 0.6
 8) REDUCED EBS IN FILL - EXCAVATED EBS MATERIAL IS USABLE IN FILLS OUTSIDE THE 1:1 SLOPE IN STAGES ONE THROUGH FOUR. EBS IN FILL REDUCTION FACTOR = 1.5.
 9) EXPANDED MARSH BACKFILL - MARSH BACKFILL FACTOR = 1.5.
 10) EXPANDED EBS BACKFILL - EBS BACKFILL FACTOR = 1.3.
 11) EXPANDED FILL FACTOR = 1.25
 12) THE MASS ORDNATE = (UNEXPANDED FILL - REDUCED MARSH - REDUCED EBS) - FILL FACTOR
 EXPANDED FILL = (UNEXPANDED FILL - REDUCED MARSH - REDUCED EBS) + SHORTAGE OF MATERIAL WITHIN THE DIVISION.
 MINUS INDICATES AN EXCESS OF MATERIAL WITHIN THE DIVISION. PLUS INDICATES A SHORTAGE OF MATERIAL WITHIN THE DIVISION.

Addendum No. 1
 ID 1007-10-72
 Revised Sheet 277
 February 27, 2015

3

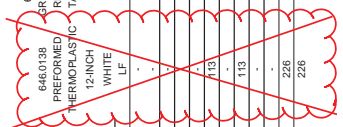
3

Addendum No. 1
 ID 1007-10-72
 Revised Sheet 291
 February 27, 2015

3

PAVEMENT MARKING

LOCATION	STATION		SKIPS		CONTRAST TAPE		REFLECTIVE TAPE		GROOVED WET		ARROWS		EPOXY CURB		STOPLINE		ISLAND NOSE		DIAGONAL		EPOXY 24-INCH		CORRUGATED				
	LF	TF	WHITE	YELLOW	WHITE	YELLOW	WHITE	YELLOW	WHITE	YELLOW	WHITE	YELLOW	WHITE	YELLOW	WHITE	YELLOW	WHITE	YELLOW	WHITE	YELLOW	WHITE	YELLOW	WHITE	YELLOW	WHITE	YELLOW	
USH 51	19+50	34+75	2,833	3,538	25	22	-	-	821	33	897	3	34	111	2	33	-	-	-	-	-	-	-	-	-	221	
USH 51/STH 73	46+00	53+00	1,250	1,060	-	-	51	753	64	246	6	2	97	70	2	-	-	-	-	-	-	-	-	-	-	221	
STH 73	53+00	78+73	1,250	1,060	63	84	1,050	1,180	38	-	-	2	1	83	-	197	-	-	-	-	-	-	-	-	-	-	
RAMP TB	54+42	61+33	5,260	5,916	104	104	84	118	38	-	-	-	-	-	-	-	-	-	-	-	-	-	-	-	-	-	
RAMP TB	54+42	61+33	5,260	5,916	104	104	84	118	38	-	-	-	-	-	-	-	-	-	-	-	-	-	-	-	-	-	
RAMP TC	691+68	612+16	2,742	2,198	132	132	100	132	-	-	-	-	-	-	-	-	-	-	-	-	-	-	-	-	-	284	
RAMP TD	613+02	639+00	2,469	1,662	63	63	1,561	1,561	-	-	-	-	-	-	-	-	-	-	-	-	-	-	-	-	-	284	
IH 39 SB	181+04	258+76	1,864	3,903	109	113	100	844	-	-	-	-	-	-	-	-	-	-	-	-	-	-	-	-	-	-	
IH 39 SB	179+34	244+69	1,494	4,420	1,103	63	1,395	6,282	156	943	15	5	234	211	8	230	558	221	-	-	-	-	-	-	-	-	
CATEGORY 1000 SUBTOTALS			26,589	28,421	2,740	47	63	1,395	6,282	156	943	15	5	234	211	8	230	558	221	-	-	-	-	-	-	-	221
PROJECT TOTALS			57,797				63	1,395	6,448		943	15	5	234	211	8	230	558	221								



REMOVING PAVEMENT MARKING

LOCATION	LF	TF
IH 39 NB EXIT RAMP	9,451	2,457
IH 39 SB	9,147	1,858
IH 39 SB EXIT RAMP	1,858	22,653
CATEGORY 1000 SUBTOTAL	22,653	22,653
PROJECT TOTAL	22,653	22,653

SAWING PAVEMENT

STAGE	LOCATION	STATION	SAWING ASPHALT	SAWING CONCRETE	REMARKS
1	RAMP TC	600+34 - 600+55 TC	24	680,050	GOEDE ROAD
	IH 39 NB	604+74 - 610+56 TC	596	-	PARKING LOT
	IH 39 NB	185+01 - 195+33 NBE	32	-	SHOULDER
	IH 39 NB	196+75 NBE	4	-	SHOULDER
	IH 39 NB	204+40 NBE	4	-	SHOULDER
	IH 39 NB	219+70 NBE	4	-	SHOULDER
	IH 39 NB	233+78 NBE	4	-	SHOULDER
	IH 39 NB	252+76 NBE	8	-	SHOULDER
	IH 39 NB	259+63 NBE	8	-	SHOULDER
	IH 39 SB	261+20 NBE	4	-	SHOULDER
	IH 39 SB	178+00 - 267+00 SBE	1365	-	SHOULDER
	IH 39 SB	253+76 - 259+50 SBE	365	-	SHOULDER
	USH 51	22+50 T	17	-	CORRUGATED MEDIAN
	USH 51	24+38 - 24+30 T	194	10	MEDIAN
	USH 51	33+85 - 34+66 T	256	11	MEDIAN
	USH 51	33+82 - 34+60 T	164	11	MEDIAN
	USH 51	34+82 - 35+60 T	164	11	MEDIAN
	HAUGEN ROAD	51+44 AL	52	-	-
	STH 73	78+73 T	10	24	-
	PIERCE ROAD	109+44 - 109+43 PR	10	-	DRIVEWAY
	IH 39 NB	111+83 - 111+84 PR	-	12	DRIVEWAY
	IH 39 NB	127+93 - 128+74 PR	61	-	DRIVEWAY
	IH 39 NB	238+35 - 232+76 NBE	18	1,445	INTERM CONNECTION
	IH 39 SB	182+34 - 197+51 SBE	17	1,520	INTERM CONNECTION
	IH 39 SB	230+69 - 240+69 SBE	19	1,004	INTERM CONNECTION
	USH 51	22+50 T	871	-	-
	USH 51	35+50 T	125	-	-
	ALBION ROAD	46+70 AL NBE	41	-	NB EXIT RAMP
	IH 39 SB	202+40 - 218+30 SBE	71	139	SB EXIT RAMP
	IH 39 SB	226+18 - 239+25 SBE	99	110	SB EXIT RAMP
	IH 39 NB	212+57 - 214+15 NBE	77	318	NB ENTRANCE RAMP
	IH 39 NB	212+57 - 214+15 NBE	77	318	NB ENTRANCE RAMP
	CATEGORY 1000 SUBTOTALS		3,820	4,432	
	PROJECT TOTALS		3,820	4,432	

TEMPORARY PAVEMENT MARKING

STAGE	LOCATION	REMOVABLE TAPE 4-INCH		REMOVABLE TAPE 8-INCH		REMOVABLE TAPE 12-INCH		ARROWS		WORDS	
		WHITE	YELLOW	WHITE	YELLOW	WHITE	YELLOW	EACH	EACH	REMOVABLE	REMOVABLE
2	STH 73	5,591	5,846	63	46	-	-	-	-	-	-
	RAMP TB	1,366	626	170	367	-	-	-	-	-	-
	RAMP TD	1,030	626	367	-	-	-	-	-	-	-
	IH 39 NB	8,927	-	-	-	-	-	-	-	-	-
	IH 39 SB	8,950	4,411	-	-	-	-	-	-	-	-
	STAGE 2 SUBTOTALS	24,964	14,733	630	46	-	-	-	-	-	-
	STAGE 2C SUBTOTALS	1,226	128	30	108	108	3	-	-	-	-
3	STH 73	9,666	10,026	64	65	-	-	1	-	-	-
	RAMP TB	970	936	-	-	-	-	-	-	-	-
	RAMP TD	1,389	636	48	34	-	-	-	-	-	-
	STAGE 3 SUBTOTALS	12,225	11,845	64	113	-	-	3	-	-	-
	STAGE 3C SUBTOTALS	39,315	27,585	64	189	108	7	-	-	-	-
	CATEGORY 1000 SUBTOTALS	39,315	27,585	64	790	189	7	-	-	-	-
	PROJECT TOTALS	39,315	27,585	64	790	189	7	-	-	-	-

PROJECT NO: 1007-10-72

HWY: USH 51/STH 73

COUNTY: DANE

MISCELLANEOUS QUANTITIES

SHEET 291

E

3

GENERAL NOTES

DRAWINGS SHALL NOT BE SCALED.
 ALL DIMENSIONS SHALL BE SHOWN UNLESS OTHERWISE SHOWN OR NOTED.
 THE FIRST OR FIRST TWO DIGITS OF THE BAR MARK SIGNIFY THE BAR SIZE.
 AT THE INTERSECTIONS OF ABUTMENTS, ALL JOINTS WHICH CANNOT BE PLACED BEFORE ABUTMENT CONSTRUCTION AND NOT OCCUPIED BY THE NEW STRUCTURE SHALL BE BACKFILLED WITH STRUCTURE BACKFILL.
 ELASTOMERIC BEARING PADS NEED NOT BE INDIVIDUALLY MOLDED PROVIDED THE CUT EDGES ARE SMOOTH AND TRUE.

THE GRADATION OF THE STRUCTURE BACKFILL SHALL MEET THE REQUIREMENTS OF SECTION 209.2.2 OF THE STANDARD SPECIFICATIONS FOR GRADE MATERIAL.
 PROTECTIVE SURFACE TREATMENT TO BE APPLIED TO THE ENTIRE TOP OF DECK, APPROACH SLABS, AND MEDIAN SURFACES.

PIGMENTED PROTECTIVE SURFACE TREATMENT TO BE APPLIED TO THE FRONT FACE AND THE TOP OF THE PARAPETS, INCLUDING PARAPETS ON APPROACH SLABS.
 THE EXISTING GROUND LINE SHALL BE USED AS THE UPPER LIMITS OF EXCAVATION AT THE PIERS.

THE SLOPE OF THE FILL IN FRONT OF THE ABUTMENTS SHALL BE COVERED WITH SLOPE PAVING MATERIAL TO THE EXTENT SHOWN ON SHEET 1 AND IN THE ABUTMENT DETAILS.

THE CONCRETE QUANTITIES FOR THE PARAPETS, SUPERSTRUCTURE DECK, MEDIAN, APPROACH SLABS, CONCRETE DIAPHRAGMS, AND HAUNCH OVER ORDERS SHALL BE PAID FOR UNDER THE BID ITEM "HPC MASONRY STRUCTURES".
 POLYMER OVERLAY TO BE APPLIED TO ENTIRE TOP OF DECK SURFACE UNDER A FUTURE CONTRACT.

THE SOIL BORINGS INDICATE THAT THE SURFACE BEDROCK ELEVATION IS VARIABLE AT BOTH ABUTMENTS; THE BEDROCK AT THE ABUTMENTS IS SLOPING DOWNWARD FROM NORTH TO SOUTH AND IS FAIRLY CONSISTENT AT THE PIER, AT THE NORTH SIDE OF THE ABUTMENT AND FROM WEST TO EAST (WEST ABUTMENT), AT THE SOUTH SIDE OF THE STRUCTURE, THE BEDROCK SURFACE ELEVATIONS ARE FAIRLY CONSISTENT. VARIABLE PILE PENETRATION IS EXPECTED.
 BEVEL EXPOSED EDGES OF CONCRETE 3/4" UNLESS SHOWN OTHERWISE.
 JOINT FILLER SHALL CONFORM TO THE REQUIREMENTS OF A.A.S.H.T.O. DESIGNATION M 153, TYPE A, IL OR A.A.S.H.T.O. DESIGNATION M 213.
 THE EXISTING PIER 1 & PIER 3 FOOTINGS OF STRUCTURE B-13-175 SHALL BE COMPLETELY REMOVED.

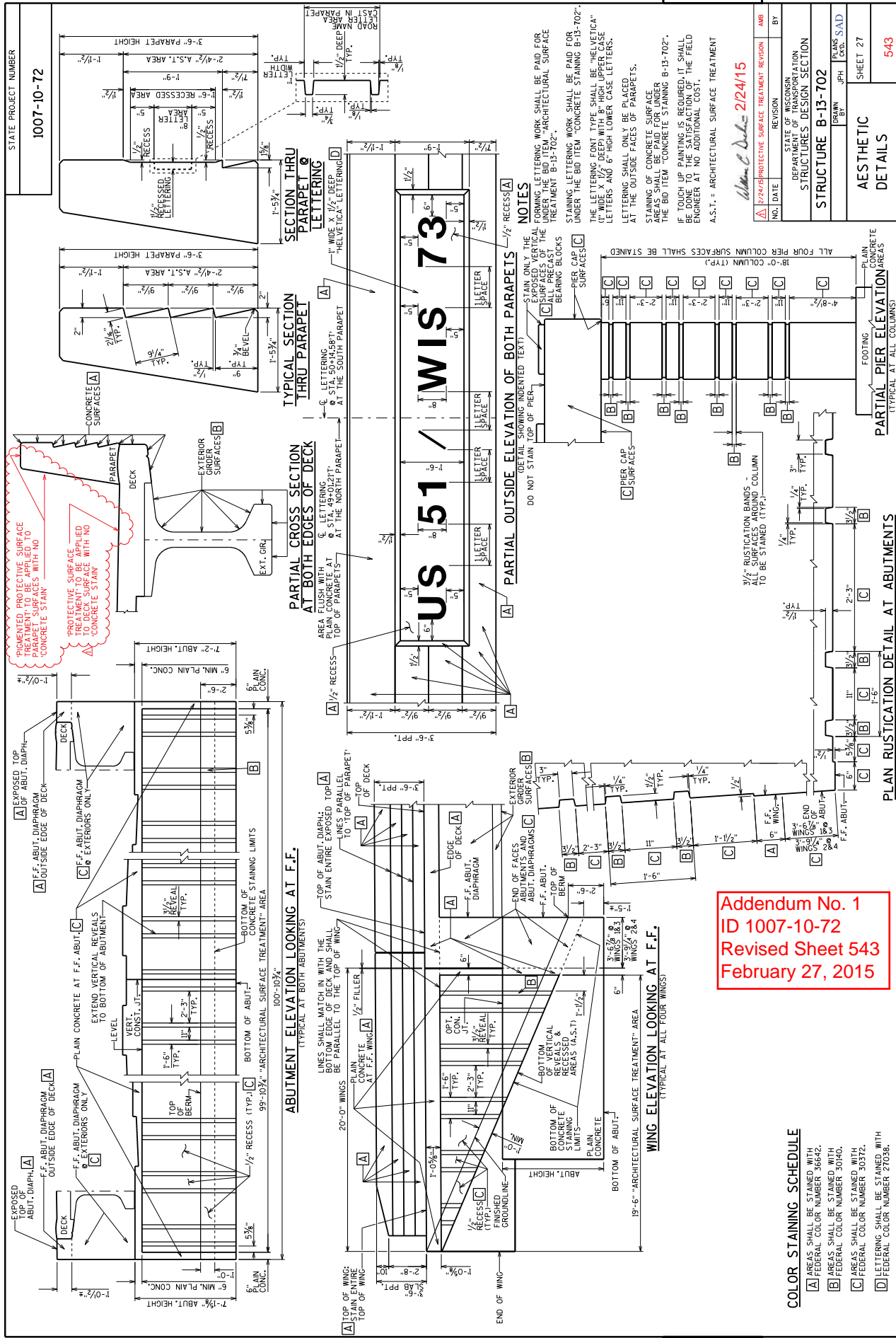
Addendum No. 1
 ID 1007-10-72
 Revised Sheet 519
 February 27, 2015

William C. Decker 2/24/15

NO.	DATE	REVISION	BY
1	2/24/15	ADDITION & PROTECTIVE SURFACE TREATMENT REV.	AMB
STATE OF WISCONSIN DEPARTMENT OF TRANSPORTATION STRUCTURES DESIGN SECTION			
DRAWN BY		DESIGNED BY	DATE
NAR		PRANS	SAD
QUANTITIES & GENERAL NOTES			SHEET 3
			519

TOTAL ESTIMATED QUANTITIES

BID ITEM NUMBER	BID ITEMS	UNIT	WEST APPROACH	SUPER	WEST ABUT.	EAST ABUT.	PIER	EAST APPROACH	TOTALS
203.0200	REMOVING OLD STRUCTURE STA. 49+70.71'	LS	---	---	---	---	---	---	1
203.0225.S	DEBRIS CONTAINMENT B-13-175	LS	---	---	---	---	---	---	1
206.1000	EXCAVATION FOR STRUCTURES BRIDGES B-13-702	LS	---	---	---	---	---	---	1
210.0100	BACKFILL STRUCTURE	CY	---	---	390	390	---	---	780
305.0120	BASE AGGREGATE DENSE LL 4-INCH	TON	300	---	---	---	---	300	600
501.0000.S	ICE HOT WEATHER CONCRETE	LB	---	---	---	---	---	---	12,275
502.0100	CONCRETE MASONRY BRIDGES	CY	27	---	140	140	68	27	402
502.2000	COMPRESSION JOINT SEALER PERFORMED ELASTOMERIC 3-INCH	LF	20	258	---	---	---	20	296
502.3200	PROTECTIVE SURFACE TREATMENT	SY	210	2,705	---	---	---	210	3,125
503.0100	PIGMENTED PROTECTIVE SURFACE TREATMENT	SY	20	255	---	---	---	20	295
503.0105	PIGMENTED PROTECTIVE SURFACE TREATMENT ORDER TYPE 500-INCH	SY	---	3,555	---	---	---	---	3,555
505.0405	BAR STEEL REINFORCEMENT HS BRIDGES	LB	---	---	9,050	9,050	7,225	---	25,325
505.0605	BAR STEEL REINFORCEMENT HS COATED BRIDGE	LB	21,220	229,085	3,390	3,390	1,995	21,220	280,280
506.2605	BEARING PADS ELASTOMERIC NON-LAMINATED	EACH	---	---	14	14	28	---	56
506.4000	STEEL DIAPHRAGMS B-13-702	EACH	---	48	---	---	---	---	48
511.2000	TEMPORARY SHORING B-13-702	SF	---	---	305	305	960	---	1,570
516.0500	RUBBERIZED MEMBRANE WATERPROOFING	SF	---	---	25	25	---	---	50
517.1000.S	CONCRETE STANNING B-13-702	SF	160	7,650	910	910	2,665	160	12,455
517.0500.S	ARCHITECTURAL SURFACE TREATMENT B-13-702	SF	95	1,215	830	830	---	95	3,065
550.0500	PILE POINTS	EACH	---	---	26	26	66	---	118
604.0400	SLOPE PAVING CONCRETE	LF	---	---	1,040	910	1,650	---	3,600
604.0500	SLOPE PAVING CRUSHED AGGREGATE	SY	---	---	265	265	---	---	530
612.0406	PIPE UNDERDRAIN WRAPPED 6-INCH	LF	---	---	135	135	---	---	270
614.0150	ANCHOR ASSEMBLIES FOR STEEL PLATE BEAM GUARD	EACH	2	---	---	---	---	2	4
652.0225	CONDUIT RIGID METALLIC 2-INCH	LF	---	100	---	---	---	---	100
652.0225	CONDUIT RIGID NONMETALLIC SCHEDULE 40 2-INCH	LF	---	935	140	140	---	---	1,215
653.0222	JUNCTION BOXES 18X24X6-INCH	EACH	---	4	---	---	---	---	4
SPV.0035.701	HPC MASONRY STRUCTURES	CY	104	1,020	---	---	---	104	1,228
SPV.0060.701	GROUND BAR COUPLERS	EACH	---	---	---	---	216	---	216
SPV.0085.701	BAR STEEL REINFORCEMENT HS STAINLESS BRIDGES	LB	---	3,335	---	---	---	---	3,335
SPV.0090.701	PRECAST PIER COLUMNS	LF	---	---	---	---	108	---	108
SPV.0090.702	PRECAST PIER CAPS	LF	---	---	---	---	91	---	91
SPV.0090.703	FENCE CHAIN LINK POLYMER COATED 6-FT	LF	30	511	---	---	---	30	571
SPV.0165.701	LONGITUDINAL GROOVING BRIDGE DECK	SF	1,770	22,720	---	---	---	1,770	26,260
	NON-BID ITEMS								
	FILLER	SIZE							1/2" - 3/4" 1"



Addendum No. 1
ID 1007-10-72
Revised Sheet 543
February 27, 2015

Wm. C. Doherty 2/24/15

NO.	DATE	REVISION	BY
1		B-13-702/PROTECTIVE SURFACE TREATMENT REVISION	AMB

STATE OF WISCONSIN
DEPARTMENT OF TRANSPORTATION
STRUCTURES DESIGN SECTION
STRUCTURE B-13-702

DRAWN BY: JPH
CHECKED BY: SAD

SCHEDULE OF ITEMS

REVISED:

CONTRACT:
20150310002PROJECT(S):
1007-10-72FEDERAL ID(S):
N/A

CONTRACTOR : _____

LINE NO	ITEM DESCRIPTION	APPROX. QUANTITY AND UNITS	UNIT PRICE		BID AMOUNT	
			DOLLARS	CTS	DOLLARS	CTS
0540	502.2000 Compression Joint Sealer Preformed Elastomeric (width) 001. 3-Inch	296.000 LF
0550	502.3200 Protective Surface Treatment	3,125.000 SY
0560	503.0155 Prestressed Girder Type I 54W-Inch **p**	3,553.000 LF
0570	505.0405 Bar Steel Reinforcement HS Bridges **p**	25,325.000 LB
0580	505.0605 Bar Steel Reinforcement HS Coated Bridges **p**	280,280.000 LB
0590	506.2605 Bearing Pads Elastomeric Non-Laminated	56.000 EACH
0600	506.4000 Steel Diaphragms (structure) 001. B-13-702 **p**	48.000 EACH
0610	511.1200 Temporary Shoring (structure) 001. B-13-702	1,570.000 SF
0620	516.0500 Rubberized Membrane Waterproofing	50.000 SY
0630	517.1010.S Concrete Staining (structure) 001. B-13-702	12,455.000 SF

SCHEDULE OF ITEMS

REVISED:

CONTRACT:
20150310002PROJECT(S):
1007-10-72FEDERAL ID(S):
N/A

CONTRACTOR : _____

LINE NO	ITEM DESCRIPTION	APPROX. QUANTITY AND UNITS	UNIT PRICE		BID AMOUNT	
			DOLLARS	CTS	DOLLARS	CTS
0930	601.0120 Concrete Curb Type J	78.000 LF	.		.	
0940	601.0407 Concrete Curb & Gutter 18-Inch Type D **p**	693.000 LF	.		.	
0950	601.0409 Concrete Curb & Gutter 30-Inch Type A **p**	30.000 LF	.		.	
0960	601.0555 Concrete Curb & Gutter 6-Inch Sloped 36-Inch Type A **p**	2,606.000 LF	.		.	
0970	601.0557 Concrete Curb & Gutter 6-Inch Sloped 36-Inch Type D **p**	3,475.000 LF	.		.	
0980	601.0580 Concrete Curb & Gutter 4-Inch Sloped 36-Inch Type R **p**	130.000 LF	.		.	
0990	602.0410 Concrete Sidewalk 5-Inch **p**	12,665.000 SF	.		.	
1000	603.8000 Concrete Barrier Temporary Precast Delivered	14,423.000 LF	.		.	
1010	603.8125 Concrete Barrier Temporary Precast Installed	20,823.000 LF	.		.	
1020	604.0400 Slope Paving Concrete	530.000 SY	.		.	
1030	604.0500 Slope Paving Crushed Aggregate	270.000 SY	.		.	

SCHEDULE OF ITEMS

REVISED:

CONTRACT:
20150310002PROJECT(S):
1007-10-72FEDERAL ID(S):
N/A

CONTRACTOR : _____

LINE NO	ITEM DESCRIPTION	APPROX. QUANTITY AND UNITS	UNIT PRICE		BID AMOUNT	
			DOLLARS	CTS	DOLLARS	CTS
1150	612.0406 Pipe Underdrain Wrapped 6-Inch	320.000 LF	.		.	
1160	612.0700 Drain Tile Exploration	527.000 LF	.		.	
1170	614.0150 Anchor Assemblies for Steel Plate Beam Guard	4.000 EACH	.		.	
1180	614.0800 Crash Cushions Permanent	2.000 EACH	.		.	
1190	614.0905 Crash Cushions Temporary	11.000 EACH	.		.	
1200	614.2300 MGS Guardrail 3	25.000 LF	.		.	
1210	614.2500 MGS Thrie Beam Transition	78.800 LF	.		.	
1220	614.2610 MGS Guardrail Terminal EAT	2.000 EACH	.		.	
1230	616.0100 Fence Woven Wire (height) 001. 4-Ft ***p**	15,838.000 LF	.		.	
1240	616.0700.S Fence Safety	1,000.000 LF	.		.	
1250	619.1000 Mobilization	1.000 EACH	.		.	

SCHEDULE OF ITEMS

REVISED:

CONTRACT:
20150310002PROJECT(S):
1007-10-72FEDERAL ID(S):
N/A

CONTRACTOR : _____

LINE NO	ITEM DESCRIPTION	APPROX. QUANTITY AND UNITS	UNIT PRICE		BID AMOUNT	
			DOLLARS	CTS	DOLLARS	CTS
1810	643.0910 Traffic Control Covering Signs Type I	5.000 EACH
1820	643.0920 Traffic Control Covering Signs Type II	96.000 EACH
1830	643.1050 Traffic Control Signs PCMS	386.000 DAY
1840	643.2000 Traffic Control Detour (project) 001. ID 1007-10-72	1.000 EACH
1850	643.3000 Traffic Control Detour Signs	8,925.000 DAY
1860	645.0120 Geotextile Fabric Type HR	2,099.000 SY
1870	646.0106 Pavement Marking Epoxy 4-Inch	57,797.000 LF
1880	646.0126 Pavement Marking Epoxy 8-Inch	943.000 LF
1900	646.0600 Removing Pavement Markings	22,653.000 LF
1910	646.0843.S Pavement Marking Grooved Wet Reflective Contrast Tape 8-Inch	1,395.000 LF

SCHEDULE OF ITEMS

REVISED:

CONTRACT:
20150310002PROJECT(S):
1007-10-72FEDERAL ID(S):
N/A

CONTRACTOR : _____

LINE NO	ITEM DESCRIPTION	APPROX. QUANTITY AND UNITS	UNIT PRICE		BID AMOUNT	
			DOLLARS	CTS	DOLLARS	CTS
2670	677.0200 Install Camera Assembly	1.000 EACH	.		.	
2680	677.0300.S Install Video Encoder	1.000 EACH	.		.	
2690	690.0150 Sawing Asphalt	3,820.000 LF	.		.	
2700	690.0250 Sawing Concrete	4,432.000 LF	.		.	
2710	715.0415 Incentive Strength Concrete Pavement	1,290.000 DOL	1.00000		1290.00	
2720	715.0502 Incentive Strength Concrete Structures	9,780.000 DOL	1.00000		9780.00	
2730	SPV.0035 Special 701. Hpc Masonry Structures	1,228.000 CY	.		.	
2740	SPV.0060 Special 001. Baseline CPM Progress Schedule	1.000 EACH	.		.	
2750	SPV.0060 Special 002. CPM Progress Schedule Updates and Accepted Revisions	6.000 EACH	.		.	
2760	SPV.0060 Special 003. Landmark Reference Monuments Special	1.000 EACH	.		.	
2770	SPV.0060 Special 010. Care Cycles	24.000 EACH	.		.	

SCHEDULE OF ITEMS

REVISED:

CONTRACT:
20150310002

PROJECT(S):
1007-10-72

FEDERAL ID(S):
N/A

CONTRACTOR : _____

LINE NO	ITEM DESCRIPTION	APPROX. QUANTITY AND UNITS	UNIT PRICE		BID AMOUNT	
			DOLLARS	CTS	DOLLARS	CTS
2980	SPV.0105 Special 003. Survey Project 1007-10-72	LUMP	LUMP			.
2990	SPV.0105 Special 401. Salvage ITS Equipment	LUMP	LUMP			.
3000	SPV.0105 Special 601. Partial Traffic Signal Removal, Ush 51 & Albion Rd/Haugen Rd	LUMP	LUMP			.
3010	SPV.0105 Special 602. Remove Loop Detector Wire And Lead-In Cable, Ush 51 & Albion/Haugen Rd	LUMP	LUMP			.
3020	SPV.0165 Special 701. Longitudinal Grooving Bridge Deck ***	SF	26,260.000	.		.
3030	SPV.0195 Special 001. Qmp Base Agg Dense 1 1/4-Inch Compaction	TON	69,324.000	.		.
3040	501.1000.S Ice Hot Weather Concreting	LB	12,225.000	.		.
3050	502.3210.S Pigmented Protective Surface Treatment	SY	295.000	.		.
	SECTION 0001 TOTAL					.
	TOTAL BID					.