



Wisconsin Department of Transportation

March 4, 2015

Division of Transportation Systems Development

Bureau of Project Development
 4802 Sheboygan Avenue, Rm 601
 P O Box 7916
 Madison, WI 53707-7916

Telephone: (608) 266-1631
 Facsimile (FAX): (608) 266-8459

NOTICE TO ALL CONTRACTORS:

**Proposal #25: 1517-75-71, WISC 2015 137
 USH 10 – USH 10/STH 441
 County CB – Oneida Street
 Racine Rd Interchange
 USH 10
 Winnebago County**

Letting of March 10, 2015

This is Addendum No. 1, which provides for the following:

Special Provisions

Revised Special Provisions	
Article No.	Description
7.1	Traffic
10.3	Staged Embankment Construction
10.4	Roadway Embankment, Item SPV.0035.001

Schedule of Items

Revised Bid Item Quantities					
Bid Item	Item Description	Unit	Old Quantity	Revised Quantity	Proposal Total
643.0300	Traffic Control Drums	Day	7,887	8,573	8,573
643.0420	Traffic Control Barricades Type III	Day	1,050	1,115	1,115
643.0705	Traffic Control Warning Lights Type A	Day	2,100	2,230	2,230
643.0715	Traffic Control Warning Lights Type C	Day	1,016	1,251	1,251
643.0900	Traffic Control Signs	Day	1,155	1,252	1,252
643.1050	Traffic Control Signs PCMS	Day	28	72	72
SPV.0090.001	Prefabricated Vertical Drains	LF	628,449	330,787	330,787

Added Bid Item Quantities					
Bid Item	Item Description	Unit	Old Quantity	Revised Quantity	Proposal Total
643.0800	Traffic Control Arrow Boards	Day	0	15	15

Plan Sheets

Revised Plan Sheets	
Plan Sheet	Plan Sheet Title (brief description of changes to sheet)
17	Plan Details (Added Future Structure Locations to plan sheets)
18	Plan Details (Added Future Structure Locations to plan sheets)
56	Miscellaneous Quantities (Revised 'Traffic Control' Table Quantities)
57	Miscellaneous Quantities (Revised 'Prefabricated Vertical Drains' Table Quantities)

The responsibility for notifying potential subcontractors and suppliers of these changes remains with the prime contractor.

Sincerely,

Mike Coleman

Proposal Development Specialist
Proposal Management Section

ADDENDUM NO. 1

1517-75-71

March 4, 2015

Special Provisions

7.1 Traffic

Replace the third table, titled "Interchange Requirements", under section **STH 441 Traffic**, with the following table:

Interchange Requirements																									
Limits:	Racine Road Interchange (Ramps)																								
	AM											PM													
From Hour to Hour	12	1	2	3	4	5	6	7	8	9	10	11	12	1	2	3	4	5	6	7	8	9	10	11	12
Daily USH 10 WB to CTH P**	C	C	C	C	C	C	1	1	1	1	1	1	1	1	1	1	1	1	C	C	C	C	C	C	C
Daily CTH P to USH 10 WB**	C	C	C	C	C	C	1	1	1	1	1	1	1	1	1	1	1	1	1	C	C	C	C	C	C
Daily USH 10 EB to CTH P	C	C	C	C	C	C	1	1	1	1	1	1	1	1	1	1	1	1	1	1	C	C	C	C	C
Daily CTH P to USH 10 EB	C	C	C	C	C	C	1	1	1	1	1	1	1	1	1	1	1	1	C	C	C	C	C	C	C
Legend																									
1	Open all ramp lanes to travel																								
C	Ramp lanes can be closed to travel																								
REMARKS:																									
- Do not close concurrent ramps (CTH AP, USH 41/USH 10, Appleton, Oneida, etc)																									
** Racine Road WB Ramps must remain open to traffic, except during permitted closure times, until 12:01 AM, June 15, 2015. At this time, the ramps will be closed until the completion of Racine Road Interchange.																									

10.3 Staged Embankment Construction

Replace the table and the footnotes for the table, with the following:

Beginning Station	Ending Station	Feature(s)	Estimated Settlement ^A (feet)	Total Number of Phases	Max Embankment Thickness/Phase (feet)	Estimated Wait Period/Phase (Months) ^B
185WB+00 / 185EB+00	192WB+00 / 192EB+00	B-70-410/411 Abutment, Embankment	1½ to 2	1	22	3
192WB+00 / 192EB+00	204WB+00 / 201EB+00	B-70-420/421 Abutment, Embankment	1¾ to 3	1	22	3
204WB+00 / 201EB+00	208WB+00 / 209EB+00	Embankment	½ to 1	1	12	3

^A Estimated settlement is total settlement for contract 1517-75-71 and 1517-75-75.

Except for maintaining embankments, no work shall be performed on embankments until settlement and monitoring requirements of the fill are complete, unless otherwise approved by the Engineer. No material shall be stockpiled or equipment stored on embankments during the waiting period, unless otherwise approved by the Engineer. The Engineer may extend the wait period of the fill if the settlement and pore pressure data indicate this is appropriate. No additional payment will be made for any delays or additional work incurred if the settlement and pore pressure data indicate the need for an extended waiting period. The Engineer may allow construction to proceed earlier than the minimum wait period if the settlement and pore pressure data indicate this is suitable.

^B The estimated wait period for each phase will begin at or before the interim completion date or the completion of the project (depending on the location). The full wait period is not included as part of the 1517-75-71 contract.

10.4 Roadway Embankment, Item SPV.0035.001

Revise the first paragraph under the "Replace section 207.4(1)..." heading to state the following, do not remove the a, b, c list of items:

The department will measure roadway embankment by the cubic yard acceptably completed in its final location at time of placement using the method of average end areas, with no correction for curvature or settlement, except as follows:

Add the following sentence in between paragraphs "If it is not possible to compute volumes....." and "The department will not measure embankment...."

Additional embankment required due to settlement is not part of this contract and will be accounted for in the subsequent project (1517-75-75).

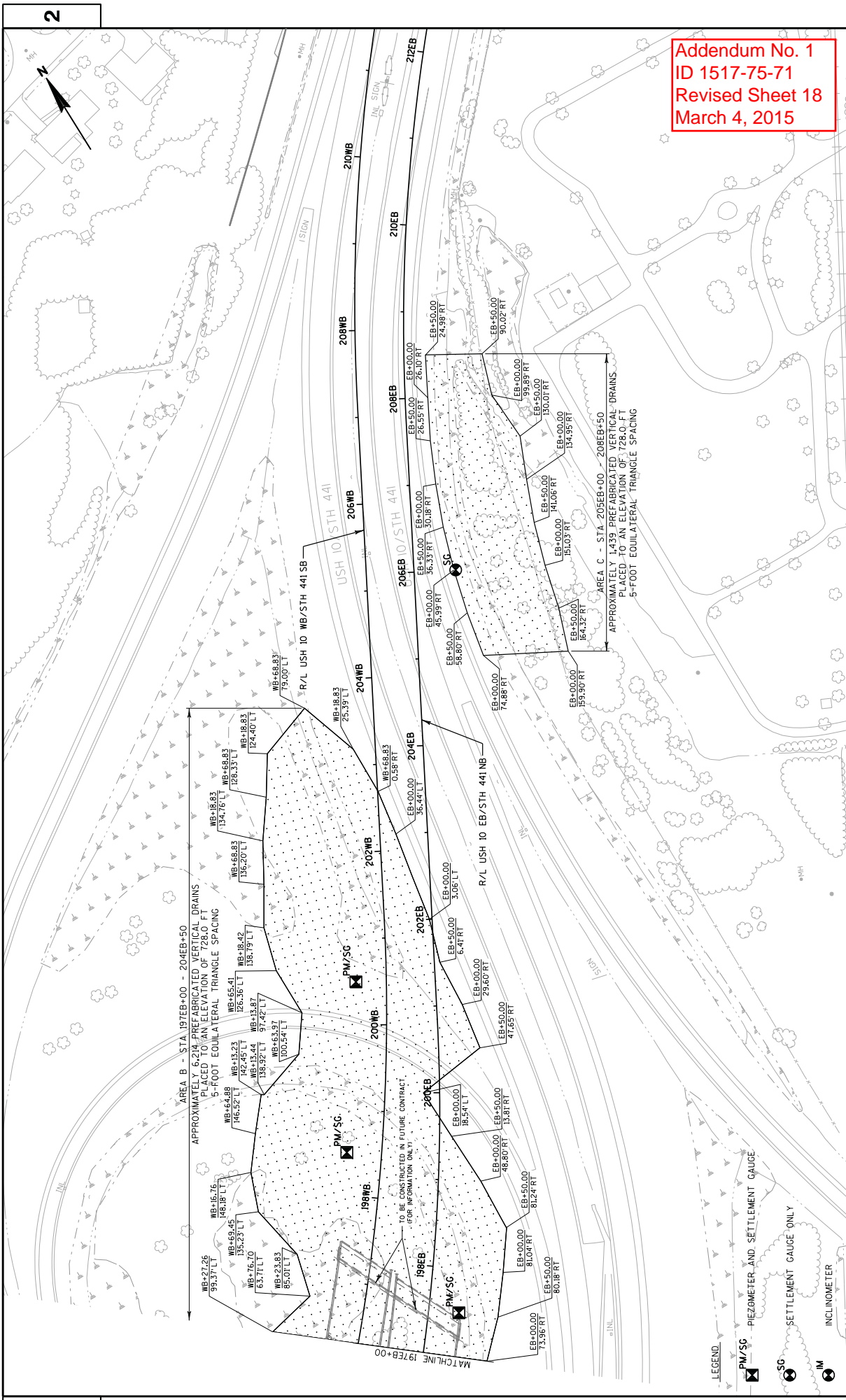
Schedule of Items

Attached, dated March 4, 2015, are the revised Schedule of Items Pages 6 and 9.

Plan Sheets

The following 8½ x 11-inch sheets are attached and made part of the plans for this proposal:
Revised: 17,18, 56, 57.

END OF ADDENDUM



Addendum No. 1
 ID 1517-75-71
 Revised Sheet 18
 March 4, 2015

LEGEND
 PM/SC PIEZOMETER AND SETTLEMENT GAUGE
 SC SETTLEMENT GAUGE ONLY
 IM INCLINOMETER

TO BE CONSTRUCTED IN FUTURE CONTRACT (FOR INFORMATION ONLY)

TRAFFIC CONTROL ITEMS

643.0200	643.0300	643.0420	643.0705	643.0715	643.0800	643.0800	643.0900	643.1050	SPV.0060.004	SPV.0060.005	SPV.0060.006	SPV.0060.007	SPV.0060.008
TRAFFIC CONTROL SURVEILLANCE AND MAINTENANCE (1517-75-71)	TRAFFIC CONTROL DRUMS	TRAFFIC CONTROL BARRICADES	TRAFFIC CONTROL WARNING LIGHTS	TRAFFIC CONTROL WARNING LIGHTS	TRAFFIC CONTROL WARNING LIGHTS	TRAFFIC CONTROL ARROW BOARDS	TRAFFIC CONTROL SIGNS	TRAFFIC CONTROL SIGNS	TRAFFIC CONTROL SIGNS	TRAFFIC CONTROL DRUMS	TRAFFIC CONTROL BARRICADES TYPE II	TRAFFIC CONTROL WARNING LIGHTS TYPE A	TRAFFIC CONTROL WARNING LIGHTS TYPE C
DAYS	EACH	EACH	EACH	EACH	EACH	EACH	EACH	EACH	EACH	EACH	EACH	EACH	EACH
DAYS	DAYS	DAYS	DAYS	DAYS	DAYS	DAYS	DAYS	DAYS	DAYS	DAYS	DAYS	DAYS	DAYS
105	105	105	105	105	105	105	105	105	105	105	105	105	105
105	20	9	18	10	4	4	4	2	10	20	5	10	10
105	2,096	945	1,890	1,016	420	420	420	20	10	20	5	10	10
105	2,121	105	2,210	1,016	420	420	420	20	10	20	5	10	10
105	35	3,670	35	35	4	4	4	28	10	20	5	10	10
105	56	56	35	35	1	1	1	1	10	20	5	10	10
105	7	14	2	4	2	2	4	1	10	20	5	10	10
105	52	208	4	35	2	8	32	10	10	20	5	10	10
105	408	55	110	60	6	6	60	10	10	20	5	10	10
105	8,573	1,115	2,230	1,251	15	15	1,252	72	10	20	5	10	10
PROJECT 1517-75-71 TOTAL													

* FOR INFORMATION ONLY

Addendum No. 1
ID 1517-75-71
Revised Sheet 56
March 4, 2015

PAVEMENT MARKING

646.0106	646.0126	646.0600	690.0250
PAVEMENT MARKING	PAVEMENT MARKING	PAVEMENT MARKING	SAVING CONCRETE
EPOXY 4-INCH YELLOW WHITE LF	EPOXY 8-INCH WHITE LF	REMOVING PAVEMENT MARKINGS	CONCRETE LF
375	375	95	18
305	435	65	18
680	435	160	17
PROJECT 1517-75-71 TOTAL			

SAWING PAVEMENT

0010	ROADWAY	FROM STATION	TO STATION	OFFSET	OFFSET
0010	USH 10 WB EXIT RAMP	194EB+17	194EB+37	226.1' LT	224.2' LT
		194EB+64	194EB+72	221.2' LT	213.6' LT
	USH 10 WB ENTRANCE RAMP	193EB+68	193EB+92	155.8' RT	155.3' RT
		194EB+48	194EB+68	204.6' LT	202.1' LT
		199EB+18	199EB+31	75.0' RT	84.1' RT
		200EB+78	200EB+96	237.1' LT	241.5' LT
PROJECT 1517-75-71 TOTAL					

PROJECT NO: 1517-75-71

HWY: USH 10

COUNTY: WINNEBAGO

MISCELLANEOUS QUANTITIES

SHEET: 56

E

DRAINAGE BLANKET

CATEGORY	ROADWAY	STATION	STATION	OFFSET	COMMENTS
0010	USH 10/STH 441	186EB+00 - 196EB+00	186WB+25	65.0' LT	INSTRUMENTATION ELEV. 735
		197EB+00 - 204EB+50	186WB+50	38.0' RT	INSTRUMENTATION ELEV. 735
		205EB+00 - 208EB+50	189WB+50	40.0' LT	INSTRUMENTATION ELEV. 735
			189WB+50	130.0' LT	INSTRUMENTATION ELEV. 735/725
			192WB+00	35.0' LT	INSTRUMENTATION ELEV. 735
			195WB+25	30.0' LT	INSTRUMENTATION ELEV. 735
			198WB+50	40.0' LT	INSTRUMENTATION ELEV. 735
			200WB+50	35.0' LT	INSTRUMENTATION ELEV. 733
PROJECT 1517-75-71 TOTAL					1

SPV.0105.002
SURVEY
PROJECT ID
1517-75-71

CATEGORY	LOCATION	COMMENTS
0010	PROJECT 1517-75-71	1
PROJECT 1517-75-71 TOTAL		1

VIBRATING WIRE PIEZOMETER

CATEGORY	ROADWAY	STATION	OFFSET	COMMENTS
0010	USH 10/STH 441 NE	197EB+50	35.0' RT	INSTRUMENTATION ELEV. 735
	USH 10/WB/STH 441 SB	186WB+25	65.0' LT	INSTRUMENTATION ELEV. 735
		186WB+50	38.0' RT	INSTRUMENTATION ELEV. 735
		189WB+50	40.0' LT	INSTRUMENTATION ELEV. 735
		189WB+50	130.0' LT	INSTRUMENTATION ELEV. 735/725
		192WB+00	35.0' LT	INSTRUMENTATION ELEV. 735
		195WB+25	30.0' LT	INSTRUMENTATION ELEV. 735
		198WB+50	40.0' LT	INSTRUMENTATION ELEV. 735
		200WB+50	35.0' LT	INSTRUMENTATION ELEV. 733
PROJECT 1517-75-71 TOTAL				9

SPV.0060.001
VIBRATING WIRE
PEZOMETER INSTRUMENTATION
SYSTEM, DELIVERED
EACH

SURVEY PROJECT

SPV.0105.002
SURVEY
PROJECT ID
1517-75-71

CATEGORY	LOCATION	COMMENTS
0010	PROJECT 1517-75-71	1
PROJECT 1517-75-71 TOTAL		1

Addendum No. 1
ID 1517-75-71
Revised Sheet 57
March 4, 2015

SETTLEMENT GAUGES

CATEGORY	ROADWAY	STATION	OFFSET	COMMENTS
0010	USH 10/STH 441 NE	192EB+50	40.0' RT	INSTRUMENTATION ELEV. 755
		197EB+50	35.0' RT	INSTRUMENTATION ELEV. 748
		206EB+00	48.0' RT	INSTRUMENTATION ELEV. 750
	USH 10/WB/STH 441 SB	186WB+25	65.0' LT	INSTRUMENTATION ELEV. 757
		186WB+50	38.0' RT	INSTRUMENTATION ELEV. 755
		189WB+50	40.0' LT	INSTRUMENTATION ELEV. 756
		189WB+50	130.0' LT	INSTRUMENTATION ELEV. 756
		192WB+00	35.0' LT	INSTRUMENTATION ELEV. 756
		195WB+25	30.0' LT	INSTRUMENTATION ELEV. 751
		198WB+50	40.0' LT	INSTRUMENTATION ELEV. 749
		200WB+50	35.0' LT	INSTRUMENTATION ELEV. 755
PROJECT 1517-75-71 TOTAL				11

SPV.0075.001
STREET SWEEPING

CATEGORY	LOCATION	COMMENTS
0010	PROJECT 1517-75-71	40
PROJECT 1517-75-71 TOTAL		40

STREET SWEEPING

PREFABRICATED VERTICAL DRAINS

CATEGORY	ROADWAY	STATION	COMMENTS
0010	USH 10/STH 441	186EB+00 - 197EB+00	230,862
		197EB+00 - 204EB+50	58,251
		205EB+00 - 208EB+50	8,549
PROJECT 1517-75-71 TOTAL			297,662

PREFABRICATED VERTICAL DRAINS

CATEGORY	ROADWAY	STATION	COMMENTS
0010	USH 10/STH 441	186EB+00 - 197EB+00	225,271
		197EB+00 - 204EB+50	86,994
		205EB+00 - 208EB+50	18,522
PROJECT 1517-75-71 TOTAL			330,787

GEOTECHNICAL INSTRUMENTATION

CATEGORY	LOCATION	COMMENTS
0010	PROJECT 1517-75-71	1
PROJECT 1517-75-71 TOTAL		1

SCHEDULE OF ITEMS

REVISED:

CONTRACT:
20150310025PROJECT(S):
1517-75-71FEDERAL ID(S):
WISC 2015137

CONTRACTOR : _____

LINE NO	ITEM DESCRIPTION	APPROX. QUANTITY AND UNITS	UNIT PRICE		BID AMOUNT	
			DOLLARS	CTS	DOLLARS	CTS
0530	638.2601 Removing Signs Type I	2.000 EACH
0540	638.2602 Removing Signs Type II	1.000 EACH
0550	643.0200 Traffic Control Surveillance and Maintenance (project) 01. Project 1517-75-71	105.000 DAY
0560	643.0300 Traffic Control Drums	8,573.000 DAY
0570	643.0420 Traffic Control Barricades Type III	1,115.000 DAY
0580	643.0705 Traffic Control Warning Lights Type A	2,230.000 DAY
0590	643.0715 Traffic Control Warning Lights Type C	1,251.000 DAY
0600	643.0900 Traffic Control Signs	1,252.000 DAY
0610	643.1000 Traffic Control Signs Fixed Message	192.000 SF
0620	643.1050 Traffic Control Signs PCMS	72.000 DAY
0630	645.0120 Geotextile Fabric Type HR **p**	90.000 SY

SCHEDULE OF ITEMS

REVISED:

CONTRACT:
20150310025

PROJECT(S):
1517-75-71

FEDERAL ID(S):
WISC 2015137

CONTRACTOR : _____

LINE NO	ITEM DESCRIPTION	APPROX. QUANTITY AND UNITS	UNIT PRICE		BID AMOUNT	
			DOLLARS	CTS	DOLLARS	CTS
0840	SPV.0090 Special 001. Prefabricated Vertical Drains	330,787.000 LF
0850	SPV.0090 Special 002. Prebored Prefabricated Vertical Drains	297,662.000 LF
0860	SPV.0090 Special 003. Concrete Barrier Temporary Precast Left In Place	1,238.000 LF
0870	SPV.0105 Special 001. Geotechnical Instrumentation	LUMP	LUMP	.	.	.
0880	SPV.0105 Special 002. Survey Project 1517-75-71	LUMP	LUMP	.	.	.
0890	SPV.0120 Special 150. Water For Seeded Areas	1,410.000 MGAL
0900	643.0800 Traffic Control Arrow Boards	15.000 DAY
	SECTION 0001 TOTAL				.	.
	TOTAL BID				.	.