

Wisconsin Department of Transportation

March 5, 2015

Division of Transportation Systems Development

Bureau of Project Development
4802 Sheboygan Avenue, Rm 601
P O Box 7916
Madison, WI 53707-7916

Telephone: (608) 266-1631
Facsimile (FAX): (608) 266-8459

NOTICE TO ALL CONTRACTORS:

Proposal #31: 9180-19-71, WISC 2015145
City of Oconto Falls
W. Highland Dr – E. Highland Drive
STH 22
Oconto County

Letting of March 10, 2015

This is Addendum No. 3, which provides for the following:

Special Provisions

Revised Special Provisions	
Article No.	Description
3	Prosecution and Progress
14	Notice to Contractor – Archaeological Coordination

Added Special Provisions	
Article No.	Description
78	Removing or Abandoning Miscellaneous Structures
79	Installing Pullbox, Item SPV.0060.20
80	Installing Conduit 1 1/2-Inch, Item SPV.0090.14
81	Installing Conduit 2-Inch, Item SPV.0090.15

Deleted Special Provisions	
Article No.	Description
63	Installing Conduit, Item SPV.0090.10

Schedule of Items

Added Bid Item Quantities					
Bid Item	Item Description	Unit	Old Quantity	Revised Quantity	Proposal Total
SPV.0060.20	Installing Pullbox	EA	0	4	4
SPV.0090.14	Installing Conduit 1 1/2-Inch	LF	0	3,415	3,415
SPV.0090.15	Installing Conduit 2-Inch	LF	0	440	440

Deleted Bid Item Quantities					
Bid Item	Item Description	Unit	Old Quantity	Revised Quantity	Proposal Total
SPV.0090.10	Installing Conduit	LF	4085	0	0

Plan Sheets

Revised Plan Sheets	
Plan Sheet	Plan Sheet Title (brief description of changes to sheet)
64	Lighting Plan – Added existing conduit to Caldwell Ave. intersection, revised new conduit, added pullboxes, revised notes, and legend.
65	Lighting Plan – Revised notes and legend.
66	Lighting Plan – Removed proposed conduit between Franklin Street and Washington Street, revised new conduit, revised notes, and legend.
67	Lighting Plan – Revised notes and legend.
120	Miscellaneous Quantities – Removed and added tables.

The responsibility for notifying potential subcontractors and suppliers of these changes remains with the prime contractor.

Sincerely,

Mike Coleman

Proposal Development Specialist
Proposal Management Section

ADDENDUM NO. 3

9180-19-71

March 5, 2015

Special Provisions

3. Prosecution and Progress

Replace the entire ninth paragraph that begins with "Once the stage is started" with the following:

Once work is started on Substage 2B, it must be completed within 30 calendar days.

14. Notice to Contractor – Archaeological Coordination.

Replace the entire article with the following:

The boundaries of an archaeological site and un-catalogued burial site 47OC88/BCO-0106 (Rollway) extend into the project area from approximately Station 430+00 to Station 444+00. WisDOT has received permission from the State Historic Preservation Office (SHPO) to work within the boundaries of this burial site. An archaeologist qualified to excavate human burial sites must be on-site to monitor construction-related ground disturbing activities within the right-of-way and easements adjacent to WIS 22 in this location. WisDOT shall ensure an archaeologist is present to oversee activities. Notice must be given to WisDOT (Lynn Cloud – 608-266-0099) at least 14 days prior to work within this area. The WisDOT PM shall take measures to ensure the burial site shall not be used for borrow or waste disposal and the site area not currently capped by asphalt/concrete should not be used for staging of personnel, equipment and/or supplies. If human bone is discovered during construction, work activities will cease immediately and contact will be made to the Wisconsin Historical Society at 1-200-342-7834 or 1-608-264-6507 for compliance with Wis. Stat. 157.70 regarding the protection of human burial sites.

78. Removing or Abandoning Miscellaneous Structures

Replace standard spec 204.3.1.2(1) with the following:

(1) Backfill all trenches and excavations immediately after removals. Native material shall be selected material from excavation that is free from large lumps, clods, or rock.

Replace standard spec 204.3.2.2(14) with the following:

(14) Under the Removing Storm Sewer bid items, remove existing storm sewer. Backfill all resulting trenches with native material that is free from large lumps, clods, or rock.

79. Installing Pullbox, Item SPV.0060.20.

A Description

This special provision describes installing City of Oconto Falls furnished pullbox for lighting as shown on the plans and as hereinafter provided.

B Materials

Two weeks prior to pickup, contact Jason Valentine at (920) 846-4512, to coordinate pickup location.

C Construction

Install so that the top of the pullbox is flush with the sidewalk.

Confirm exact location with City of Oconto Falls before installation.

D Measurement

The department will measure Installing Pullbox by each individual installed Pullbox, acceptably completed.

E Payment

The department will pay for measured quantities at the contract unit price under the following bid item:

ITEM NUMBER	DESCRIPTION	UNIT
SPV.0060.20	Installing Pullbox	Each

Payment is full compensation for transportation of pullbox, installing, including all excavating, bedding, and backfilling; and for disposing of surplus materials.

80. Installing Conduit 1 1/2-Inch, Item SPV.0090.14.

A Description

This special provision describes installing City of Oconto Falls furnished conduit rigid nonmetallic schedule 40 for lighting as shown on the plans and as hereinafter provided.

B Materials

Two weeks prior to pickup, contact Jason Valentine at (920) 846-4512, to coordinate pickup location.

Provide woven pull tape for all ducts in the run. The woven pull tape shall have documentation as duct cutting resistant, tensile strength of greater than 1100 pounds, nominal width of 1/2 inch, and maximum allowable elongation under pulling tension of 10 percent.

The City of Oconto Falls will provide all fittings, adapters, and bends as required.

C Construction

Install conduit per standard spec 652.3.

Install woven pull tape in all conduit.

D Measurement

The department will measure Installing Conduit 1 1/2-Inch by the linear foot, acceptably completed.

E Payment

The department will pay for measured quantities at the contract unit price under the following bid item:

ITEM NUMBER	DESCRIPTION	UNIT
SPV.0090.14	Installing Conduit 1 1/2-Inch	LF

Payment is full compensation for transportation of conduit, installing, including all excavating, bedding, and backfilling, including any sand, concrete, or other required materials; for providing and installing woven pull tape; for disposing of surplus materials; and for making inspections.

81. Installing Conduit 2-Inch, Item SPV.0090.15.

A Description

This special provision describes installing City of Oconto Falls furnished conduit rigid nonmetallic schedule 40 for lighting as shown on the plans and as hereinafter provided.

B Materials

Two weeks prior to pickup, contact Jason Valentine at (920) 846-4512, to coordinate pickup location.

Provide woven pull tape for all ducts in the run. The woven pull tape shall have documentation as duct cutting resistant, tensile strength of greater than 1100 pounds, nominal width of 1/2 inch, and maximum allowable elongation under pulling tension of 10 percent.

The City of Oconto Falls will provide all fittings, adapters, and bends as required.

C Construction

Install conduit per standard spec 652.3.

Locate ends of existing 2-inch HDPE on east and west side of Caldwell Avenue. Extend with provided conduit to pullboxes as shown in plans.

Install woven pull tape in all conduit.

D Measurement

The department will measure Installing Conduit 2-Inch by the linear foot, acceptably completed.

E Payment

The department will pay for measured quantities at the contract unit price under the following bid item:

ITEM NUMBER	DESCRIPTION	UNIT
SPV.0090.15	Installing Conduit 2-Inch	LF

Payment is full compensation for transportation of conduit locating end of existing conduit, installing, including all excavating, bedding, and backfilling, including any sand or other required materials; for providing and installing woven pull tape; for disposing of surplus materials; and for making inspections.

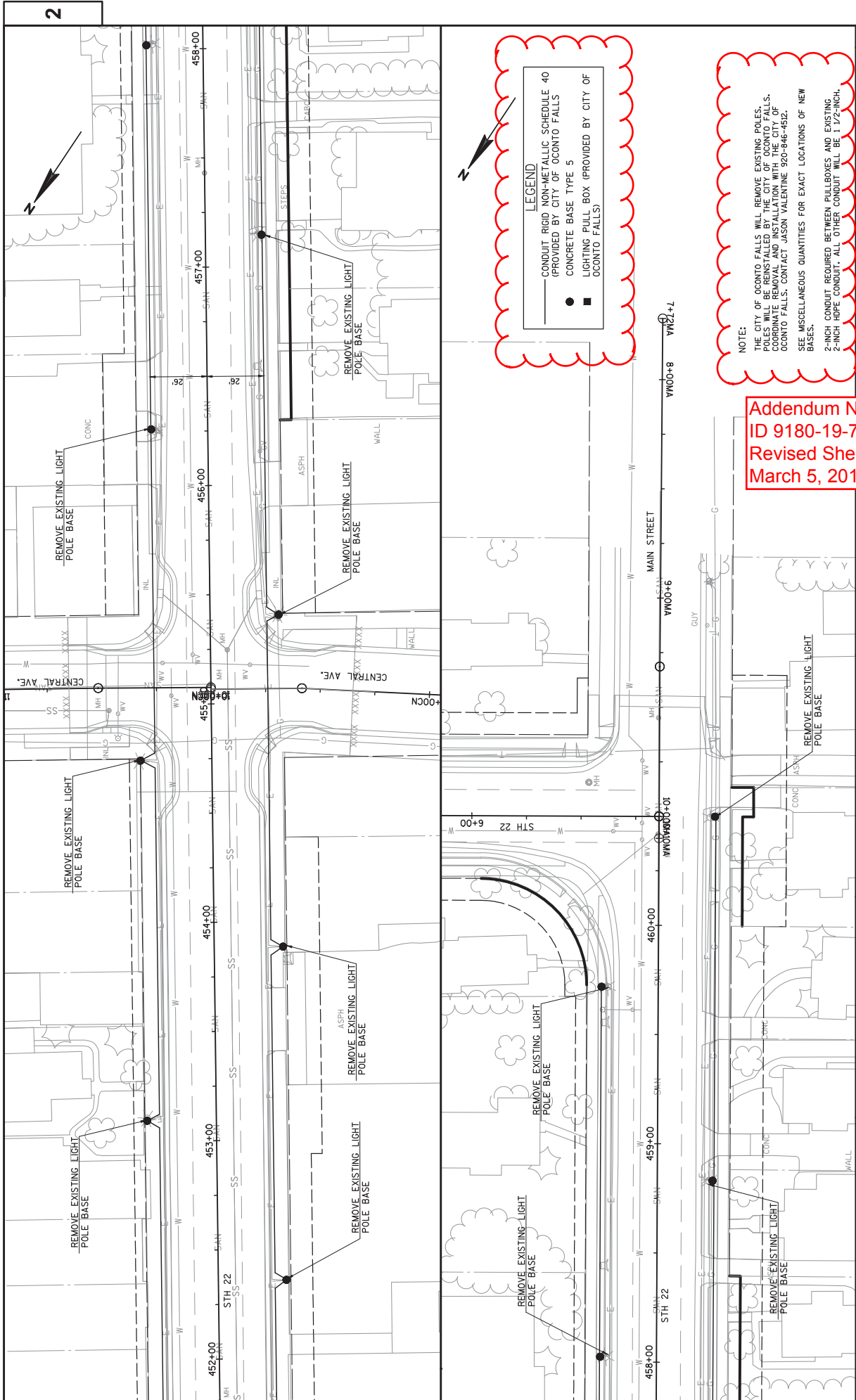
Schedule of Items

Attached, dated March 5, 2015, are the revised Schedule of Items Pages 19 and 20.

Plan Sheets

The following 8½ x 11-inch sheets are attached and made part of the plans for this proposal:
Revised: 64, 65, 66, 67, and 120.

END OF ADDENDUM

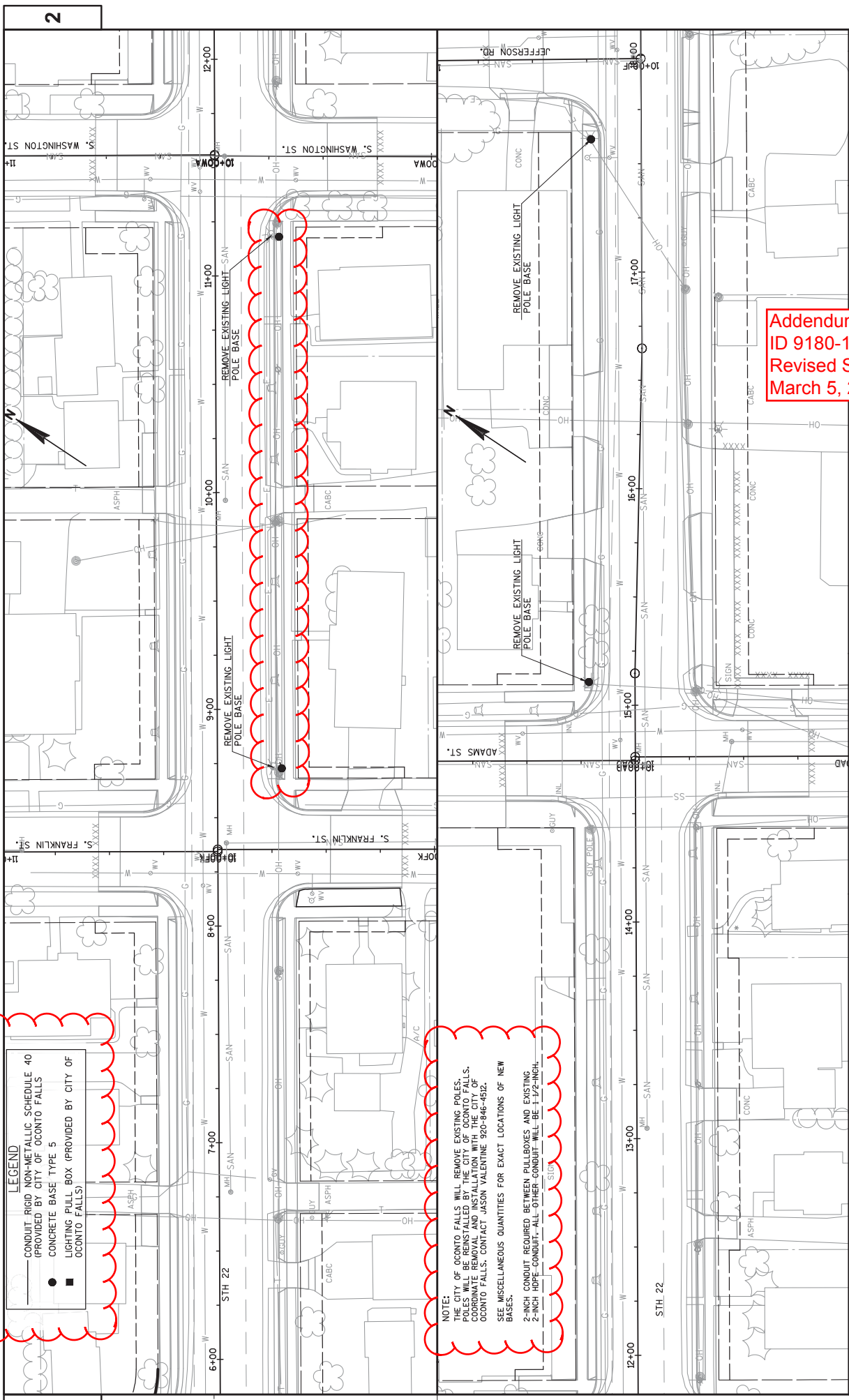


LEGEND

- CONDUIT RIGID NON-METALLIC SCHEDULE 40 (PROVIDED BY CITY OF OCONTO FALLS)
- CONCRETE BASE TYPE 5
- LIGHTING PULL BOX (PROVIDED BY CITY OF OCONTO FALLS)

NOTE:
 THE CITY OF OCONTO FALLS WILL REMOVE EXISTING POLES. POLES WILL BE REINSTALLED BY THE CITY OF OCONTO FALLS. COORDINATE REMOVAL AND INSTALLATION WITH THE CITY OF OCONTO FALLS. CONTACT JASON VALENTE 920-846-4512. SEE MISCELLANEOUS QUANTITIES FOR EXACT LOCATIONS OF NEW BASES.
 2-INCH CONDUIT REQUIRED BETWEEN PULLBOXES AND EXISTING 2-INCH ROPE CONDUIT. ALL OTHER CONDUIT WILL BE 1 1/2-INCH.

Addendum No. 3
ID 9180-19-71
Revised Sheet 65
March 5, 2015

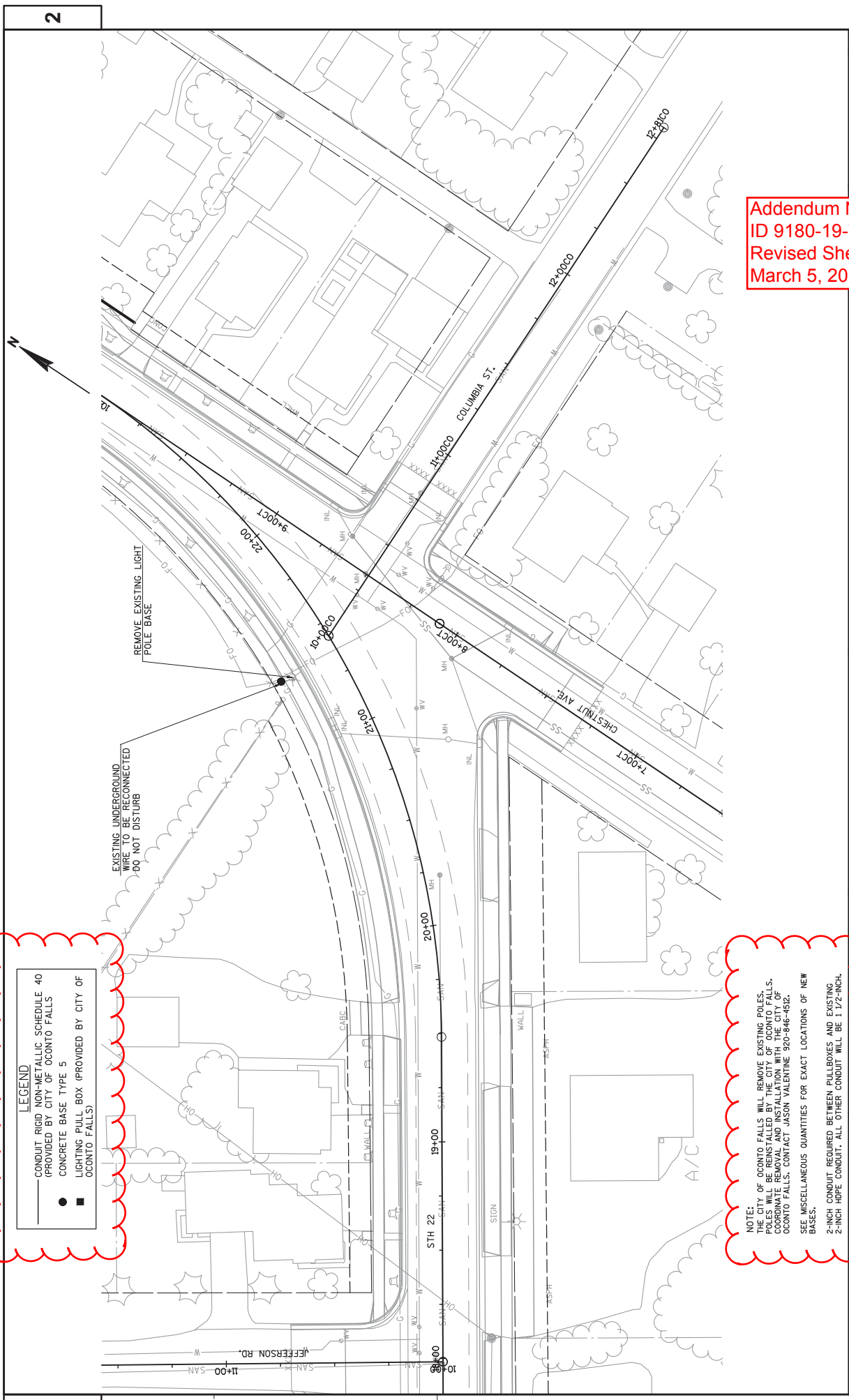


LEGEND

- CONDUIT RIGID NON-METALLIC SCHEDULE 40 (PROVIDED BY CITY OF OCONTO FALLS)
- CONCRETE BASE TYPE 5
- LIGHTING PULL BOX (PROVIDED BY CITY OF OCONTO FALLS)
-

NOTE:
 THE CITY OF OCONTO FALLS WILL REMOVE EXISTING POLES. POLES WILL BE REINSTALLED BY THE CITY OF OCONTO FALLS. COORDINATE REMOVAL AND INSTALLATION WITH THE CITY OF OCONTO FALLS. CONTACT JASON VALENTE 360-946-4922.
 SEE MISCELLANEOUS QUANTITIES FOR EXACT LOCATIONS OF NEW BASES.
 2-INCH CONDUIT REQUIRED BETWEEN PULLBOXES AND EXISTING 2-INCH HOPE CONDUIT. ALL OTHER CONDUIT WILL BE 1/2-INCH.

Addendum No. 3
ID 9180-19-71
Revised Sheet 66
March 5, 2015



LEGEND

- CONDUIT RIGID NON-METALLIC SCHEDULE 40 (PROVIDED BY CITY OF OCONTO FALLS)
- CONCRETE BASE TYPE 5
- LIGHTING PULL BOX (PROVIDED BY CITY OF OCONTO FALLS)

NOTE:
 THE CITY OF OCONTO FALLS WILL REMOVE EXISTING POLES. POLES WILL BE REINSTALLED BY THE CITY OF OCONTO FALLS. COORDINATE REMOVAL AND INSTALLATION WITH THE CITY OF OCONTO FALLS; CONTACT JASON VALENTINE 920-846-4912.
 SEE MISCELLANEOUS QUANTITIES FOR EXACT LOCATIONS OF NEW BASES.
 2-INCH CONDUIT REQUIRED BETWEEN PULLBOXES AND EXISTING 2-INCH HDPE CONDUIT. ALL OTHER CONDUIT WILL BE 1 1/2-INCH.

Addendum No. 3
ID 9180-19-71
Revised Sheet 67
March 5, 2015

Addendum No. 3
 ID 9180-19-71
 Revised Sheet 120
 March 5, 2015

SAWING PAVEMENT (CONTINUED)

CAT.	STATION	LOCATION	690.0150 SAWING ASPHALT LF	690.0250 SAWING CONCRETE LF	REMARKS
0010	10+55	JEFFERSON RD, LT	-	12	PE ROAD
	10+70	JEFFERSON RD	-	3	2-CE AND PARKING LOT
	18+29	STH 22, RT	153	-	SIDEWALK
	18+57	STH 22, LT	-	4	SIDEWALK
	19+15	STH 22, LT	-	5	PE
	7+30	S CHESTNUT AVE	31	5	SIDEROAD
	10+85	COLUMBIA ST	31	5	SIDEROAD
	22+19	STH 22, RT	-	4	SIDEWALK
	22+74	STH 22, RT	-	3	SIDEWALK
	22+90	STH 22, RT	-	10	PE
	23+64	STH 22, RT	-	20	PE
	24+52	STH 22, RT	-	4	SIDEWALK
	25+36	STH 22, RT	-	4	SIDEWALK
	11+00	PAUL ST	31	5	SIDEROAD
	28+73	STH 22, RT	-	4	SIDEWALK
27+02	STH 22, RT	-	27	PE	
27+36	STH 22, RT	-	3	SIDEWALK	
27+86	STH 22, RT	-	3	SIDEWALK	
28+12	STH 22, RT	13	-	PE	
28+26	STH 22, RT	-	14	PE	
28+55	STH 22, RT	-	3	SIDEWALK	
28+93	STH 22, RT	-	10	PE	
29+18	STH 22, RT	-	3	SIDEWALK	
29+94	STH 22, RT	11	-	PE	
30+37	STH 22, LT	11	-	CE	
10+75	GROVE ST	24	-	SIDEROAD	
31+44	STH 22, RT	-	2	SIDEWALK	
31+64	STH 22, RT	-	2	SIDEWALK	
9+05	MONROE ST	36	5	SIDEROAD	
32+73	STH 22, LT	198	-	3-CE AND PARKING LOT	
9+40	QUINCY ST	36	5	SIDEROAD	
36+40	STH 22, RT	14	-	PE	
9+40	JACKSON ST	37	5	SIDEROAD	
10+65	JACKSON ST	35	5	SIDEROAD	
38+50	STH 22, LT	30	-	CE	
38+99	STH 22, LT	16	-	PE	
40+67	STH 22, RT	20	-	CE	
9+40	VAN BUREN ST	36	5	SIDEROAD	
41+37	STH 22, RT	21	-	CE	
43+07	STH 22, RT	23	-	CE	
44+07	STH 22, RT	23	4	CE	
44+84	STH 22, LT	18	-	PE	
45+62	STH 22, LT	23	-	CE	
46+70	STH 22, LT	47	3	CE	
9+00	E HIGHLAND DR	57	10	SIDEROAD	

SAWING PAVEMENT (CONTINUED)

CAT.	STATION	LOCATION	690.0150 SAWING ASPHALT LF	690.0250 SAWING CONCRETE LF	REMARKS
0010	10+82	E HIGHLAND DR	31	-	PE
	11+02	E HIGHLAND DR	20	-	PE
	11+20	E HIGHLAND DR	40	5	SIDEROAD ROAD
	50+25	STH 22	93	20	
	SUBTOTALS		2,400	2,425	
0020	ENTIRE PROJECT	STH 22	-	1,680	COLOR X-WALKS
	SUBTOTALS		0	1,680	
0030	420+00 - 440+91	STH 22	-	900	FOR CONC. PAVE. REPAIR AREA
	SUBTOTALS		0	900	
	TOTALS		2,400	5,015	

NOTE
 MAINLINE CONCRETE PAVEMENT TO BE SAWCUT AFTER POURING AT COLORED CROSSWALK LOCATIONS

STREET SWEEPING
 INSTALLING CONDUIT 1 1/2-INCH

INSTALLING PULLBOXES

INSTALLING CONDUIT 2-INCH

STATION	LOCATION	SPV,0075.01 HRS	STATION	LOCATION	SPV,0090.14 LF
UNDISTRIBUTED	STH 22	100	440+87	-	459+72
TOTAL		100	441+75	-	460+50
			TOTAL		3,415

STATION	LOCATION	SPV,0060.20 EACH	STATION	LOCATION	SPV,0090.15 LF
447+20	STH 22, RT	1	440+87	-	459+72
448+30	STH 22, LT	1	TOTAL		440
448+70	STH 22, RT	1			
449+57	STH 22, RT	1			
TOTAL		4			

REMOVE AND SALVAGE
 SPV,0165.01 SF

INSTALL SALVAGED
 SPV,0165.02 SF

TOTALS

1,000 225
 1,000 225
 ALL ITEMS ARE CATEGORY 0010 UNLESS OTHERWISE STATED

SCHEDULE OF ITEMS

REVISED:

CONTRACT:
20150310031PROJECT(S):
9180-19-71FEDERAL ID(S):
WISC 2015145

CONTRACTOR : _____

LINE NO	ITEM DESCRIPTION	APPROX. QUANTITY AND UNITS	UNIT PRICE		BID AMOUNT	
			DOLLARS	CTS	DOLLARS	CTS
1940	SPV.0090 Special 11. Concrete Landscaping Curb	400.000 LF
1950	SPV.0090 Special 12. Concrete Paver Edge	50.000 LF
1960	SPV.0090 Special 13. Concrete Joint And Crack Cleaning	200.000 LF
1970	SPV.0105 Special 01. Concrete Pavement Joint Layout	LUMP	LUMP	.	.	.
1980	SPV.0120 Special 01. Water For Seeded Areas	260.000 MGAL
1990	SPV.0165 Special 01. Remove And Salvage Brick Pavers	1,000.000 SF
2000	SPV.0165 Special 02. Install Salvaged Brick Pavers	225.000 SF
2010	SPV.0165 Special 03. Concrete Sidewalk SHES 6-Inch	1,165.000 SF
2020	SPV.0180 Special 01. Concrete Pavement SHES 8-Inch	350.000 SY
2030	SPV.0180 Special 02. Concrete Driveway SHES 6-Inch	15.000 SY
2040	SPV.0180 Special 03. Shredded Hardwood Bark Mulch	385.000 SY

SCHEDULE OF ITEMS

REVISED:

CONTRACT:
20150310031PROJECT(S):
9180-19-71FEDERAL ID(S):
WISC 2015145

CONTRACTOR : _____

LINE NO	ITEM DESCRIPTION	APPROX. QUANTITY AND UNITS	UNIT PRICE		BID AMOUNT	
			DOLLARS	CTS	DOLLARS	CTS
2050	460.1103 HMA Pavement Type E-3	60.000 TON	.		.	
2060	465.0105 Asphaltic Surface	40.000 TON	.		.	
2070	611.2003 Manholes 3-FT Diameter	1.000 EACH	.		.	
2080	SPV.0090 Special 10. Pipe Underdrain Railroad 6-Inch	115.000 LF	.		.	
2090	SPV.0105 Special 02. Construction Staking Railroad Crossing	LUMP	LUMP		.	
2100	SPV.0105 Special 03. Grading and Shaping Railroad Crossing	LUMP	LUMP		.	
2110	SPV.0060 Special 20. Installing Pullbox	4.000 EACH	.		.	
2120	SPV.0090 Special 14. Installing Conduit 1 1/2-Inch	3,415.000 LF	.		.	
2130	SPV.0090 Special 15. Installing Conduit 2-Inch	440.000 LF	.		.	
	SECTION 0001 TOTAL				.	
	TOTAL BID				.	