



Wisconsin Department of Transportation

March 4, 2015

Division of Transportation Systems Development

Bureau of Project Development
4802 Sheboygan Avenue, Rm 601
P O Box 7916
Madison, WI 53707-7916

Telephone: (608) 266-1631
Facsimile (FAX): (608) 266-8459

NOTICE TO ALL CONTRACTORS:

Proposal #36: 7220-01-71, WISC 2015 150
C Menomonie, Broadway Street
24th Avenue – 11th Avenue
STH 25
Dunn County

7600-02-70, NA
C Menomonie, Stout Road
Red Cedar Intersection
USH 12
Dunn County

7600-02-71, WISC 2015 151
C Menomonie, Broadway Street
Tainter Street – Wolske Bay Rd
USH 12
Dunn County

Letting of March 10, 2015

This is Addendum No. 1, which provides for the following:

Special Provisions

Revised Special Provisions	
Article No.	Description
4	Traffic
6	Utilities
21	Removing Signs Type II
38	Furnish and Install Poles Type 12, Item SPV.0060.21; Furnish and Install Monotube Arms 40-FT, Item SPV.0060.22.

Added Special Provisions	
Article No.	Description
55	Alternate Route Signing Coordination with Other Projects
56	Concrete Sidewalk 4-Inch, Item 602.0405
57	Portable Changeable Message Sign (PCMS) Cellular Communications, Item SPV.0045.01

Deleted Special Provisions	
Article No.	Description
49	Construction Staking Curb Ramps

Schedule of Items

Revised Bid Item Quantities					
Bid Item	Item Description	Unit	Old Quantity	Revised Quantity	Proposal Total
643.0200	Surveillance and Maintenance (Project) 02. 7600-02-70 (Revised Project No.)	DAY	0	33	186
643.0200	Surveillance and Maintenance (Project) 03. 7600-02-71 (Revised Project No.)	DAY	0	47	186
650.9910	Construction Staking Supplemental (Project) 02. 7600-02-70 (Revised Project No.)	LS	0	1	3
650.9910	Construction Staking Supplemental (Project) 03. 7600-02-72 (Revised Project No.)	LS	0	1	3

Added Bid Item Quantities					
Bid Item	Item Description	Unit	Old Quantity	Revised Quantity	Proposal Total
650.8500	Construction Staking Electrical Installations (Project) 01. 7220-01-71	LS	0	1	1
650.8500	Construction Staking Electrical Installations (Project) 02. 7600-02-71	LS	0	1	1
SPV.0045.01	Portable Changeable Message Sign (PCMS) Cellular Communications	DAY	0	12	12

Deleted Bid Item Quantities					
Bid Item	Item Description	Unit	Old Quantity	Revised Quantity	Proposal Total
SPV.0105.14	Construction Staking Curb Ramps	LS	1	0	0

Plan Sheets

Revised Plan Sheets	
Plan Sheet	Plan Sheet Title (brief description of changes to sheet)
	ID 7220-01-71
24	Rectangular Rapid Flashing Beacon Detail (Note Change)
25	Rectangular Rapid Flashing Beacon 10 th Avenue(Note Change)
26	Rectangular Rapid Flashing Beacon 17 th Avenue(Note Change)
95	Miscellaneous Quantities(7220-01-71) (Quantities Change)
	ID 7600-02-71
34	IH 94 Alternate Route Signing (Note Changes)
35	IH 94 Alternate Route Signing (Note Changes)
36	IH 94 Alternate Route Signing (Note Changes)
37	IH 94 Alternate Route Signing (Note Changes)
52	Miscellaneous Quantities (Quantities Change)
53	Miscellaneous Quantities (Quantities Change)

Other

Proposal cover sheet has the wrong titling for the project 7600-02-7. The correct titling should be:

**Dunn 7600-02-71 WISC 2015 151 City of Menomonie, Broadway Street USH 12
Tainter Street to Wolske Bay Road.**

The responsibility for notifying potential subcontractors and suppliers of these changes remains with the prime contractor.

Sincerely,

Mike Coleman

Proposal Development Specialist
Proposal Management Section

ADDENDUM NO. 1
7220-01-71, 7600-02-70, 7600-02-71
March 4, 2015

Special Provisions

4. Traffic

*Add the following paragraph in the **Property Access** subsection*

Coordinate with property owners that require semi-truck delivery vehicle access during staged construction. Provide advanced notification for all UW Stout and gas station properties to determine delivery vehicle access locations and schedules. Modify the work zone to allow for delivery vehicle access unless an alternate driveway is provided.

6. Utilities

Remove entire language and replace with the following:

Project ID 7220-01-71

This project ID does not come under the provision of Administrative Rule Trans 220.

There are underground and overhead utility facilities located within the project limits. There are known utility adjustments required for the construction project as noted below. Coordinate construction activities with a call to Diggers Hotline or a direct call to the utilities that have facilities in the area as required per statutes. Use caution to insure the integrity of underground facilities and maintain code clearance from overhead facilities at all times. Adjustments in the location of certain described items may be necessary, as directed by the engineer, when it becomes evident that a utility conflict could occur.

Some of the utility work described below is dependent on prior work being performed by the contractor at a specific site. In such situations, provide the engineer and the affected utility a good faith notice of when the utility is to start work at the site. Provide this notice 14 to 16 calendar days in advance of when the prior work will be completed and the site will be available to the utility. Follow-up with a confirmation notice to the engineer and utility not less than 3 working days before the site will be ready for the utility to begin work.

24-7 Telecom

24-7 Telecom has underground facilities within the project area that are not anticipated to be in conflict with project activities.

There is a utility facility within the project area that may require monitoring during construction. Contact the utility prior to beginning work to coordinate monitoring requirements at the following location:

Underground fiber optic line crossing STH 25 at the south side of 13th Avenue (148+15) in the vicinity of sidewalk replacement and lowering. Contact the utility prior to beginning work to coordinate monitoring requirements.

The field contact is Brad Schmidtknecht, 5808 Old Mill Plaza, Eau Claire, WI 54703, (715)-231-2000.

Charter Communications

Charter Communications has overhead facilities within the project area that are in conflict with project activities.

The following utility facilities are planned to be relocated prior to construction at the following locations:

Xcel Energy Electric pole at 125+10, RT (20th Avenue) with joint overhead Charter Communication cables will be relocated to the east to avoid conflicts with proposed sidewalk construction.

Xcel Energy Electric pole at 134+90, RT (17th Avenue) with joint overhead Charter Communication cables will be relocated to the east to avoid conflicts with proposed sidewalk construction.

Charter Communications will be relocated prior to construction, anticipated completion date – May 1, 2015.

City of Menomonie

The City of Menomonie has underground street lighting, traffic signal, sanitary sewer and water main facilities within the project area. This project ID includes all street lighting, traffic signal, sanitary sewer and water main relocations and adjustments planned under category 0020 work items. The plans and miscellaneous quantities include specific locations of the City of Menomonie's work.

Xcel Energy Electrical (Distribution)

Xcel Energy Electrical has underground and overhead facilities within the project area that are in conflict with project activities.

The following utility facilities are planned to be relocated prior to construction at the following locations:

Xcel Energy Electric pole at 125+10, RT (20th Avenue) with joint overhead Charter Communication cables will be relocated to the east to avoid conflicts with proposed sidewalk construction.

Xcel Energy Electric pole at 134+90, RT (17th Avenue) with joint overhead Charter Communication cables will be relocated to the east to avoid conflicts with proposed sidewalk construction.

Xcel Energy Electric pole with street light at 135+50, LT (17th Avenue) will be relocated to the north to avoid conflicts with proposed sidewalk and flashing beacon construction.

Xcel Energy Electric will be relocated prior to construction, anticipated completion date – May 1, 2015.

The following utility facilities are planned to be relocated during construction at the following locations:

Xcel Energy Electric pole with street light at 144+85, LT (14th Avenue) will be relocated to the north to avoid conflicts with proposed hydrant during construction, then reinstalled after hydrant installation.

Pole relocation is anticipated to require less than 1-day to complete for both removal and reinstallation.

Xcel Energy Gas

Xcel Energy Gas has underground facilities within the project area that are in conflict with project activities.

There are utility facilities within the project area that may require monitoring during construction. Contact the utility prior to beginning work to coordinate monitoring requirements at the following locations:

Underground gas line crossing STH 25 at the north side of 13th Avenue (148+58) in the vicinity of sidewalk replacement and lowering, and traffic signal base installation.
Inlet replacement near existing gas line at station 121+57, LT (21st Avenue).

The following utility facilities are planned to be adjusted during construction at the following locations:

Xcel Energy gas valves at the locations listed below (located within the roadway surface) will be adjusted vertically to final roadway grade. Coordinate with the utility to verify all locations of existing gas valves within the pavement and sidewalk construction limits; and to determine requirements for pavement removal adjacent to the gas valves, construction access and traffic control needs.

Valve adjustments are anticipated to require 2-days to complete. Valves requiring adjustments:

124+85, LT
138+38, LT
145+12, LT
148+60, LT

The field contact is Mike Johnsen, 320 Heller Road, Menomonie, WI 54751, (715)-577-7428.

AT&T Wisconsin

AT&T Wisconsin has underground facilities within the project area that are not anticipated to be in conflict with project activities.

There are utility facilities within the project area that may require monitoring during construction. Contact the utility prior to beginning work to coordinate monitoring requirements at the following locations:

AT&T Wisconsin underground telecommunications line adjacent to proposed hydrant installation at station 121+75, RT (21st Avenue).

AT&T Wisconsin underground telecommunications line adjacent to proposed hydrant installation at station 144+80, LT (14th Avenue).

AT&T Wisconsin underground telecommunications line adjacent to proposed traffic signal base installation and sidewalk replacement and lowering at station 148+58, LT (13th Avenue).

AT&T Wisconsin underground telecommunications line and pedestal adjacent to proposed street light base installation and sidewalk replacement and lowering at station 157+90, LT (10th Avenue).

AT&T Wisconsin underground telecommunications lines throughout the project limits below proposed sidewalk replacement and lowering.

The field contact is Rick Podolak, 304 South Dewey Street – 4th Floor, Eau Claire, WI 54701, (715)-839-5565.

UW Stout Facilities

UW Stout Facilities has underground facilities within the project area that are in conflict with project activities.

The following utility facilities are planned to be adjusted during construction at the following locations:

UW Stout Facilities electric (primary) and communications (signal) vault at station 157+90, RT (10th Avenue). This existing vault lies just below the proposed sidewalk replacement and lowering. Two existing manhole castings will be impacted by project activities.

Refer to the following coordination requirements for work within the area of the existing vault and castings:

Contact UW Stout Facilities prior to the beginning of the project and a minimum of 2-weeks prior to starting work in the southwest corner of the 10th Avenue intersection to ensure adequate coordination timeframes are provided.

Provide traffic control devices for prohibiting pedestrian access to the area once the vault is exposed; especially when the signal casting is removed. The existing signal casting shall not be removed, leaving the interior of the vault exposed unless construction activities are taking place. Secure the area at all times.

Remove existing concrete sidewalk over the existing vault. The existing concrete sidewalk was poured directly on top of the vault with a bond break surface for separation.

UW Stout (or designated contractor) will remove the existing signal casting and adjusting rings and set the casting to the proposed sidewalk grade. Coordinate activities to determine the new casting grade (based on sidewalk slopes). Casting adjustments are anticipated to require up to three (3) days to fully complete.

Provide a bond break material (incidental to project items) on top of the existing vault prior to pouring new concrete sidewalk.

Pour new concrete sidewalk and concrete curb pedestrian without requiring adjustment to the existing primary casting.

The field contact is Mike McCluskey, University of Wisconsin-Stout, Physical Plant General Services Building 915 South Broadway, Menomonie, WI, 54751, (715)-232-1475.

Project ID 7600-02-70

This project ID does come under the provision of Administrative Rule Trans 220.

There are underground and overhead utility facilities located within the project limits. There are known utility adjustments required for the construction project as noted below. Coordinate construction activities with a call to Diggers Hotline or a direct call to the utilities that have facilities in the area as required per statutes. Use caution to insure the integrity of underground facilities and maintain code clearance from overhead facilities at all times. Adjustments in the location of certain described items may be necessary, as directed by the engineer, when it becomes evident that a utility conflict could occur.

Some of the utility work described below is dependent on prior work being performed by the contractor at a specific site. In such situations, provide the engineer and the affected utility a good faith notice of when the utility is to start work at the site. Provide this notice 14 to 16 calendar days in advance of when the prior work will be completed and the site will be available to the utility. Follow-up with a confirmation notice to the engineer and utility not less than 3 working days before the site will be ready for the utility to begin work.

24-7 Telecom

24-7 Telecom has underground facilities within the project area that are not anticipated to be in conflict with project activities.

Charter Communications

Charter Communications has underground facilities within the project area that are not anticipated to be in conflict with project activities.

There is a utility facility within the project area that may require monitoring during construction. Contact the utility prior to beginning work to coordinate monitoring requirements at the following location:

Underground fiber optic and coax line crossing Red Cedar Street (11+00, LT) in the vicinity of inlet replacement. Contact the utility prior to beginning work to coordinate monitoring requirements.

The field contact is Tom Haas, 2304 South Main Street, Rice Lake, WI 54868, (715)-370-1601.

City of Menomonie

The City of Menomonie has underground street lighting, traffic signal, sanitary sewer and water main facilities within the project area. This project ID includes all street lighting and traffic signal work planned. The plans and miscellaneous quantities include specific locations of the City of Menomonie's street lighting and traffic signal work.

No conflicts are anticipated with the sanitary and water main facilities.

Xcel Energy Electrical (Distribution)

Xcel Energy Electrical has underground and overhead facilities within the project area that are not anticipated to be in conflict with project activities.

There is a utility facility within the project area that may require monitoring during construction. Contact the utility prior to beginning work to coordinate monitoring requirements at the following location:

Underground electric line in 6-inch conduit crossing USH 12 (46+90, RT) in the vicinity of inlet replacement. Contact the utility prior to beginning work to coordinate monitoring requirements.

Xcel Energy will also be requested to provide a new 120/240V, 100-Amp electrical service for the proposed traffic signal installation. Coordinate electrical service installation as part of project work items (on behalf of the City of Menomonie).

The field contact is Mike Johnsen, 320 Heller Road, Menomonie, WI 54751, (715)-577-7428.

Xcel Energy Gas

Xcel Energy Gas has underground facilities within the project area that are not anticipated to be in conflict with project activities.

There is a utility facility within the project area that may require monitoring during construction. Contact the utility prior to beginning work to coordinate monitoring requirements at the following location:

Underground gas line crossing Red Cedar Street (11+00, LT) in the vicinity of inlet replacement. Contact the utility prior to beginning work to coordinate monitoring requirements.

The field contact is Mike Johnsen, 320 Heller Road, Menomonie, WI 54751, (715)-577-7428.

AT&T Wisconsin

AT&T Wisconsin has underground facilities within the project area that are not anticipated to be in conflict with project activities.

There is a new utility facility installed in November 2014 and is not shown on the plans. An underground fiber optic cable running parallel at approximately 95' LT to the westbound centerline of USH 12 / STH 29 was installed. This cable is not anticipated to conflict with the proposed roadway and traffic signal construction.

There is a utility facility within the project area that may require monitoring during construction. Contact the utility prior to beginning work to coordinate monitoring requirements at the following location:

AT&T Wisconsin underground telecommunications line below a proposed traffic signal base installation at station 47+10, LT. The plans call for a shallow spread-type footing to avoid conflicts with this existing line.

The field contact is Rick Podolak, 304 South Dewey Street – 4th Floor, Eau Claire, WI 54701, (715)-839-5565.

Project ID 7600-02-71

This project ID does not come under the provision of Administrative Rule Trans 220.

There are underground and overhead utility facilities located within the project limits. There are known utility adjustments required for the construction project as noted below. Coordinate construction activities with a call to Diggers Hotline or a direct call to the utilities that have facilities in the area as required per statutes. Use caution to insure the integrity of underground facilities and maintain code clearance from overhead facilities at all times. Adjustments in the location of certain described items may be necessary, as directed by the engineer, when it becomes evident that a utility conflict could occur.

Some of the utility work described below is dependent on prior work being performed by the contractor at a specific site. In such situations, provide the engineer and the affected utility a good faith notice of when the utility is to start work at the site. Provide this notice 14 to 16 calendar days in advance of when the prior work will be completed and the site will be available to the utility. Follow-up with a confirmation notice to the engineer and utility not less than 3 working days before the site will be ready for the utility to begin work.

24-7 Telecom

24-7 Telecom has underground facilities within the project area that are not anticipated to be in conflict with project activities.

Charter Communications

Charter Communications has overhead facilities within the project area that are in conflict with project activities.

The following utility facilities are planned to be relocated prior to construction at the following locations:

Xcel Energy Electric pole at 212+15, 30' LT with joint overhead Charter Communication cables will be relocated to the west to avoid conflicts with proposed temporary widening and beam guard installation.

Xcel Energy Electric pole at 214+00, 33' LT with joint overhead Charter Communication cables will be relocated to the west to avoid conflicts with proposed temporary widening and beam guard installation.

Xcel Energy Electric pole at 215+65, 32' LT with joint overhead Charter Communication cables will be relocated to the west to avoid conflicts with proposed temporary widening and beam guard installation.

Xcel Energy Electric pole at 216+68, 32' LT with joint overhead Charter Communication cables will be relocated to the west to avoid conflicts with proposed temporary widening and beam guard installation.

Charter Communications will be relocated prior to construction, anticipated completion date – March 10, 2015.

City of Menomonie

The City of Menomonie has underground street lighting, traffic signal, sanitary sewer and water main facilities within the project area. This project ID includes all street lighting and traffic signal work planned. The plans and miscellaneous quantities include specific locations of the City of Menomonie's street lighting and traffic signal work.

No conflicts are anticipated with the sanitary and water main facilities.

Xcel Energy Electrical (Distribution)

Xcel Energy Electrical has underground and overhead facilities within the project area that are in conflict with project activities.

The following utility facilities are planned to be relocated prior to construction at the following locations:

Xcel Energy Electric pole at 212+15, 30' LT with joint overhead Charter Communication cables will be relocated to the west to avoid conflicts with proposed temporary widening and beam guard installation.

Xcel Energy Electric pole at 214+00, 33' LT with joint overhead Charter Communication cables will be relocated to the west to avoid conflicts with proposed temporary widening and beam guard installation.

Xcel Energy Electric pole at 215+65, 32' LT with joint overhead Charter Communication cables will be relocated to the west to avoid conflicts with proposed temporary widening and beam guard installation.

Xcel Energy Electric pole at 216+68, 32' LT with joint overhead Charter Communication cables will be relocated to the west to avoid conflicts with proposed temporary widening and beam guard installation.

Xcel Energy Electric will be relocated prior to construction, anticipated completion date – March 1, 2015.

Xcel Energy Gas

Xcel Energy Gas has underground facilities within the project area that are not anticipated to be in conflict with project activities.

Xcel Energy Electrical (Transmission)

Xcel Energy Electrical (Transmission) has overhead facilities within the project area that are not anticipated to be in conflict with project activities. The overhead transmission line crosses USH 12 / STH 25 once within the project limits between 208+50, LT and 210+60, RT.

AT&T Wisconsin

AT&T Wisconsin has underground facilities within the project area that are not anticipated to be in conflict with project activities.

21. Removing Signs Type II, Item 638.2602

Remove entire language and replace with the following:

This work shall be in accordance with the pertinent requirements of standard spec 638 and as provided here.

Type II signs are the department's property. All DOT signs removed, and not identified for reuse, shall be separated, plywood from aluminum signs, and the aluminum signs shall be palletized for shipment and handling with a forklift. Contact DTSD Sign Shop Coordinator Steve Allard at (715) 855-7671 at least 3 business days prior to delivery to coordinate shipment to be delivered to the DTSD Sign Shop Distribution Center at one of the following locations:

Dunn County Highway Shop, 3303 USH 12 East, Menomonie, WI 54751

LaCrosse County Highway Shop, 301 Carlson Rd, West Salem, WI 54669

Price County Highway Shop, 704 N. Lake Ave, Phillips, WI 54555

Washburn County Highway Shop, 1600 CTH H, Spooner, WI 54801

Wood County Highway Shop, 555 17th Ave North, Wisconsin Rapids, WI 54495

38. Furnish and Install Poles Type 12, Item SPV.0060.21; Furnish and Install Monotube Arms 40-FT, Item SPV.0060.22.

Replace B Materials with the following:

B Materials

Furnish monotube arms 40-ft as listed on the WisDOT prequalified products list by Millerbernd Manufacturing, including all miscellaneous hardware.

Furnish monotube poles type 12 including anchor bolts, hardware and top templates.

Furnish monotube arms 40-ft including all miscellaneous hardware.

All monotube materials, hardware, bolts and miscellaneous hardware shall have accepted equipment certifications on file with the Department. Monotube equipment shall be compatible with concrete bases included in the contract

49. DELETED

55. Alternate Route Signing Coordination with Other Project.

The Department plans to mill and pave, replace culverts, replace beam guard and resign on the following project 7090-05-65 located on USH 12 within the 2015 Construction season with 7220-01-71, 7600-02-70 and 7600-02-71 Concrete pavement repair, signals and utilities projects located on USH 12 and STH 25:

7090-05-65

Baldwin - Menomonie

STH 128 – IH 94

USH 12

Dunn County

Contact the Department and the contractor for the project 7090-05-65 to obtain schedule of beginning construction to coordinate placement of the alternate route signing for IH 94 on STH 29 and sign covering on USH 12 within the project limits prior to the start of construction operations..

Contact name and phone number for the Department are

:

Tim Mason, (WDOT) NW Region Project Development Supervisor, 715-833-5366

Wendy Maves, (WDOT) NW Region Project Manager, 715-836-3902

The Department will not charge calendar days to the completion date contract for the placement and covering of the alternate route signing if it is required prior to the beginning of 7220-01-71, 7600-02-70 and 7600-02-71 Concrete pavement repair, signals and utilities projects located on USH 12 and STH 25:

56. Concrete Sidewalk 4-Inch, Item 602.0405.

A Description

Perform work in accordance to the applicable provisions of section 602 of the standard specification.

B Materials

In accordance with section 602.2.

C Construction

In accordance with section 602.3 and hereinafter required:

Finishing Requirements

Layout grade breaks and concrete joints as shown on the plans in curb ramp areas. Sidewalk joints shall maintain parallel lines and uniform width of the sidewalk(s) approaching the curb ramp areas. Finish concrete sidewalk using a 4-inch wide edge or groove tool in curb ramp areas. Edge finishing is not required along parallel sections of concrete sidewalk replacements.

Sidewalk Staking Requirements

Set and maintain construction stakes or marks as necessary to achieve the required accuracy and to support the method of operations. Set additional construction stakes as necessary to establish location and grade of the curb ramp including points of change in alignment and grade in accordance to the plans, standard details for curb ramps, and for conformance with ADAAG. Locate stakes to within 0.02 feet horizontally and establish the grade elevation to within 0.01 feet vertically.

D Measurement

In accordance with section 602.4.

E Payment

In accordance with section 602.5 and for finishing and staking requirements described herein.

57. Portable Changeable Message Sign (PCMS) Cellular Communications, SPV.0045.01

A Description

This special provision describes cellular communications requirements for use with PCMS. Cellular communication allows the department to control PCMS during incidents or other emergencies through Trans Suite software. The department will notify contractor of message changes.

B Materials

Provide a cellular modem and antenna that enables the department to communicate and control PCMS conforming to standard spec 643.2.7.

B.1 Cellular Modem and Antenna

Furnish an EV-DO Cellular modem registered to a 3G Cellular carrier. The cellular modem must include 1 or more external antennas, 1 or more 10/100 Ethernet ports, and 1 or more db9 Serial RS-232 interfaces. The device must be able to handle -30° C to +75° C and powered by a 12VDC power supply. The cellular modem must have a built-in secure router with NAT, port forwarding and IP pass-through capabilities.

Provide management IP and passwords for the cellular modem to the department.

Access includes IP address, serial port setting, and password(s). Antenna cable shall be continuous without splices. Mount the antenna at the highest practical location on the PCMS.

C Construction

Conform to standard spec 643.3.7. Install cellular modem in a lockable, weatherproof compartment in the PCMS trailer.

A minimum of 14 days prior to deployment, demonstrate to the department that the cellular modem is capable of communications with Trans Suite software.

If remote communications are interrupted or temporarily unavailable, contractor will be notified by the department to change the message.

D Measurement

The department will measure Portable Changeable Message Sign (PCMS) Cellular Communications by the day acceptably completed, measured as the number of calendar days each cellular modem for PCMS is available for exclusive use under the contract. The department will deduct one day for each calendar day the sign communications are required but out of service for more than 2 hours.

E Payment

The department will pay for measured quantities at the contract unit price under the following bid item:

ITEM NUMBER	DESCRIPTION	UNIT
SPV.0045.01	Portable Changeable Message Sign (PCMS) Cellular Communications	DAY

Payment is full compensation for providing, operating and maintaining a cellular modem and antenna, and for making message changes if cellular communications are interrupted or temporarily unavailable.

Schedule of Items

Attached, dated March 4, 2015, are the revised Schedule of Items Pages 8, 12, and 21 – 23.

Plan Sheets

The following 8½ x 11-inch sheets are attached and made part of the plans for this proposal:

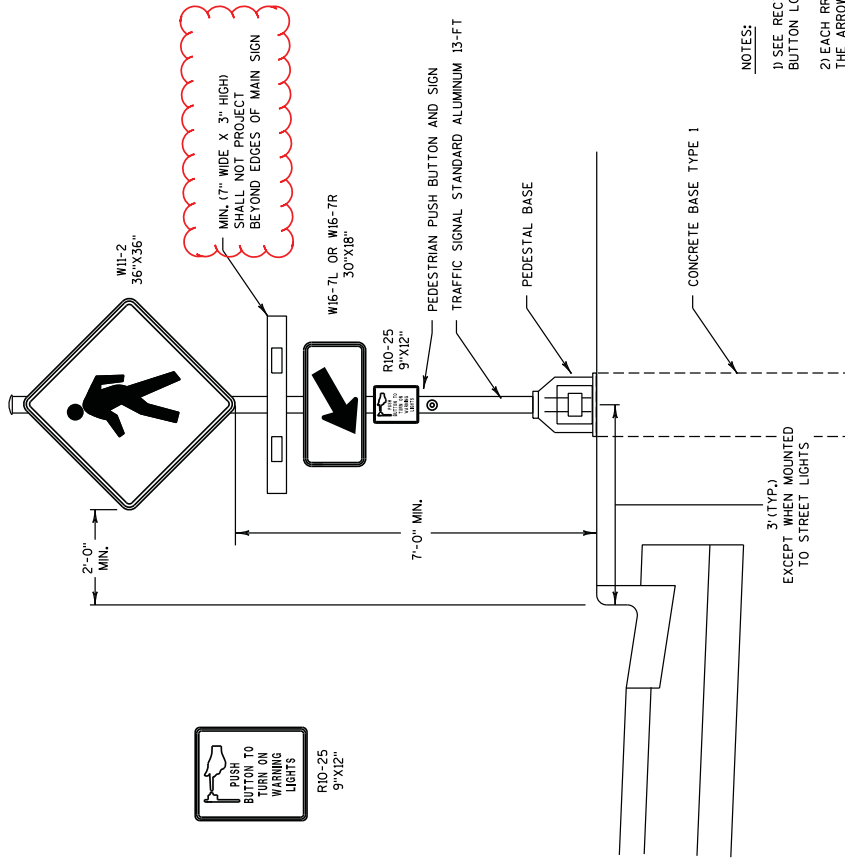
ID 7220-01-71

Revised:24 – 26, and 95.

ID 7600-02-71

Revised: 34 – 37, 52, and 53.

Addendum No. 1
ID 7220-01-71
Revised Sheet 24
March 4, 2015

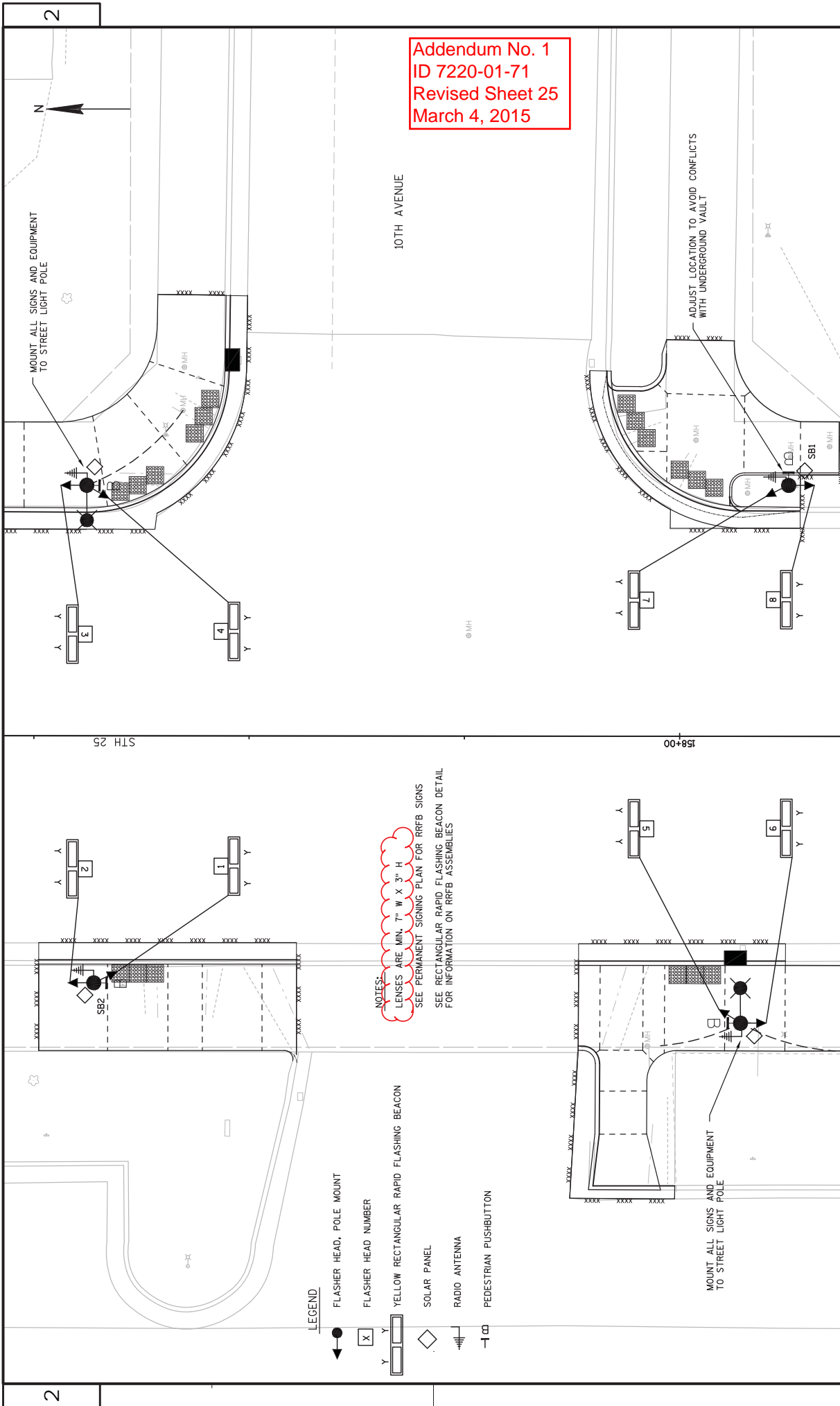


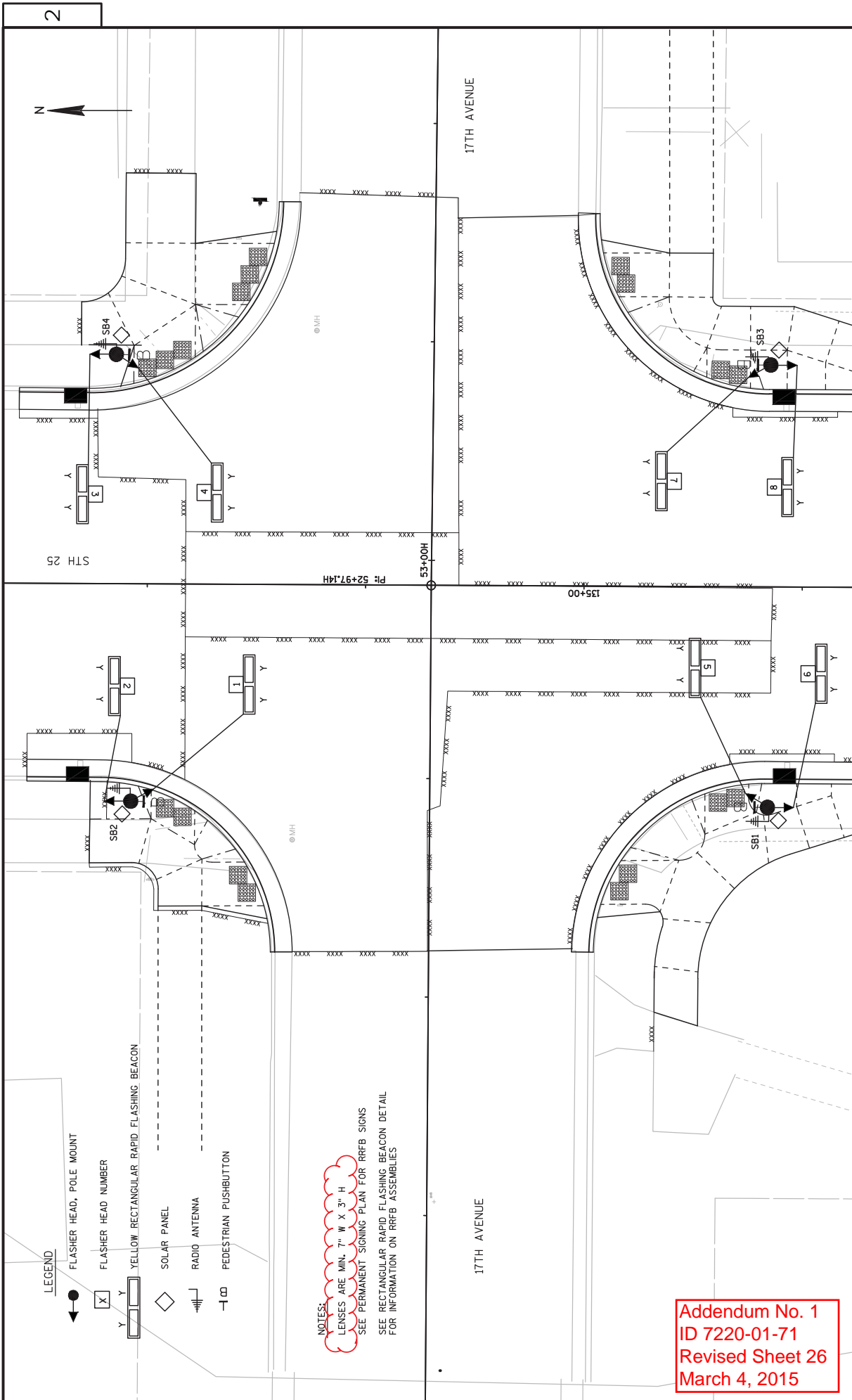
NOTES:

- 1) SEE RECTANGULAR RAPID BEACON PLAN SHEETS FOR BEACON AND PUSH BUTTON LOCATIONS.
- 2) EACH RFBF POLE SHALL HAVE ONE (1) W16-7L SIGN OR ONE (1) W16-7R SIGN. THE ARROW SHALL BE DIRECTED TOWARDS THE CURB. REFER TO SIGNING PLANS FOR LOCATIONS
- 3) EACH RFBF POLE SHALL HAVE ONE (1) W11-2 SIGN. REFER TO SIGNING PLANS FOR LOCATIONS
- 4) LOCATE RIO-25 SIGN ABOVE PUSH BUTTON ACTIVATION BUTTON 4' MOUNTING HEIGHT TO PUSH BUTTON.
- 5) LIGHT BAR, CONTROLS, BATTERY, WIRELESS RADIO, SOLAR PANEL, HARDWARE AND INCIDENTALS ARE CONSIDERED PART OF THE "SYSTEM" BID ITEM. ALL OTHER ITEMS SHALL BE CONSIDERED SEPARATELY.
- 6) FIELD LOCATE ALL BASES TO PROVIDE 15' MAXIMUM REACH FROM ACCESSIBLE SLOPED AREA.

RECTANGULAR RAPID FLASHING BEACON DETAIL

NO SCALE





- LEGEND**
- FLASHER HEAD, POLE MOUNT
 - X FLASHER HEAD NUMBER
 - Y Y
 - ◇ YELLOW RECTANGULAR RAPID FLASHING BEACON
 - ◇ SOLAR PANEL
 - ⎓ RADIO ANTENNA
 - ⎓ PEDESTRIAN PUSHBUTTON

NOTES:
 LENSES ARE MIN. 7" W X 3" H
 SEE PERMANENT SIGNING PLAN FOR RRFB SIGNS
 SEE RECTANGULAR RAPID FLASHING BEACON DETAIL
 FOR INFORMATION ON RRFB ASSEMBLIES

Addendum No. 1
 ID 7220-01-71
 Revised Sheet 26
 March 4, 2015

2

STH 25

Fig. 52+97.14H

533+00H

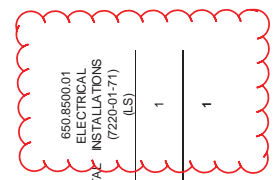
135+00

17TH AVENUE

17TH AVENUE

Addendum No. 1
ID 7220-01-71
Revised Sheet 95
March 4, 2015

PAVEMENT MARKING																		
CATEGORY	BEGN STA	END STA	EPOXY 4-INCH (WHITE) (LF)	EPOXY 8-INCH (WHITE) (LF)	ARROWS TYPE 1 (EACH)	ARROWS TYPE 2 (EACH)	ARROWS (EACH)	SYMBOLS EPOXY (EACH)	BIKE SHARED LANE EPOXY (EACH)	WORDS EPOXY (EACH)	YIELD LINE 18-INCH (EACH)	STOP LINE EPOXY 18-INCH (LF)	DIAGONAL EPOXY 12-INCH (YELLOW) (LF)	CROSSWALK EPOXY 24-INCH (LF)	WORDS (WHITE) (EACH)	SYMBOLS (WHITE) (EACH)	YIELD LINE 18-IN (EACH)	PAVEMENT MARKING (LS)
0010	105+00 - 112+50		1,900	105	5					1		40	35	270				
	112+50 - 115+65		1,100	105	3					1		17		60				
	115+65 - 119+10		800		3							17		60				
	119+10 - 122+40		620	125						1		95		234				
	122+40 - 125+60		860	105	3					1		33		240				
	125+60 - 135+50		2,350		6							33		216				
	135+50 - 139+00		890		2							17		120				
	139+00 - 142+20		800		2							18		108				
	142+20 - 145+50		830		3							18		54				
	145+50 - 148+75		720	115	2					1		76	30	228				
	148+75 - 152+00		570	175	2					1		52		222				
	152+00 - 156+50		950	60	1					1		69						
	CATEGORY 0010 TOTALS		12,405	790	1	34	0	0	0	7	0	416	134	1,812	0	0	0	0
0020	105+00 - 112+50																	
	112+50 - 115+65								2									
	115+65 - 119+10								2									
	119+10 - 122+40								2									
	122+40 - 125+60								2									
	125+60 - 135+50								4									
	135+50 - 139+00								3									
	139+00 - 142+20								1									
	142+20 - 145+50								2									
	145+50 - 148+75								2									
	148+75 - 152+00								2									
	152+00 - 156+50								1									
	156+50 - 160+00								4		24	25		204	4	4	24	
	CATEGORY 0020 TOTALS		0	0	0	0	6	25	6	6	36	25	0	204	4	4	24	1
	PROJECT TOTALS		12,405	790	1	34	6	25	13	36	441	134	2,016	4	4	24		



CONSTRUCTION STAKING

STATION	DESCRIPTION	QUANTITY (LF)	UNIT	PROJECT	AMOUNT (LS)
106+76 - 152+00	STH25	1330		7220-01-71	90.50
		4530			90.50
	PROJECT TOTALS	1330			90.50

MISCELLANEOUS LUMP SUM PAVEMENT ITEMS

STATION	DESCRIPTION	QUANTITY (LF)	UNIT	PROJECT	AMOUNT (LS)
	650.8500.01 ELECTRICAL INSTALLATIONS (7220-01-71) (LS)	1		7220-01-71	90.50
	650.5500 CURB GUTTER AND RESURFACING SUPPLEMENTAL CONTROL (LF)	1			90.50
	650.8000 CURB & GUTTER REFERENCE (LF)	1			90.50
	650.9910.01 SUPPLEMENTAL INSTALLATIONS (7220-01-71) (LS)	1			90.50
	650.8000 RESURFACING SUPPLEMENTAL CONTROL (LF)	1			90.50
	650.8000 CURB & GUTTER REFERENCE (LF)	1			90.50
	650.9910.01 SUPPLEMENTAL INSTALLATIONS (7220-01-71) (LS)	1			90.50
	650.8000 CURB GUTTER AND RESURFACING SUPPLEMENTAL CONTROL (LF)	1			90.50
	650.8000 CURB & GUTTER REFERENCE (LF)	1			90.50
	650.9910.01 SUPPLEMENTAL INSTALLATIONS (7220-01-71) (LS)	1			90.50
	650.8000 RESURFACING SUPPLEMENTAL CONTROL (LF)	1			90.50
	650.8000 CURB & GUTTER REFERENCE (LF)	1			90.50
	650.9910.01 SUPPLEMENTAL INSTALLATIONS (7220-01-71) (LS)	1			90.50
	650.8000 CURB GUTTER AND RESURFACING SUPPLEMENTAL CONTROL (LF)	1			90.50
	650.8000 CURB & GUTTER REFERENCE (LF)	1			90.50
	650.9910.01 SUPPLEMENTAL INSTALLATIONS (7220-01-71) (LS)	1			90.50
	650.8000 RESURFACING SUPPLEMENTAL CONTROL (LF)	1			90.50
	650.8000 CURB & GUTTER REFERENCE (LF)	1			90.50
	650.9910.01 SUPPLEMENTAL INSTALLATIONS (7220-01-71) (LS)	1			90.50
	650.8000 CURB GUTTER AND RESURFACING SUPPLEMENTAL CONTROL (LF)	1			90.50
	650.8000 CURB & GUTTER REFERENCE (LF)	1			90.50
	650.9910.01 SUPPLEMENTAL INSTALLATIONS (7220-01-71) (LS)	1			90.50
	650.8000 RESURFACING SUPPLEMENTAL CONTROL (LF)	1			90.50
	650.8000 CURB & GUTTER REFERENCE (LF)	1			90.50
	650.9910.01 SUPPLEMENTAL INSTALLATIONS (7220-01-71) (LS)	1			90.50
	650.8000 CURB GUTTER AND RESURFACING SUPPLEMENTAL CONTROL (LF)	1			90.50
	650.8000 CURB & GUTTER REFERENCE (LF)	1			90.50
	650.9910.01 SUPPLEMENTAL INSTALLATIONS (7220-01-71) (LS)	1			90.50
	650.8000 RESURFACING SUPPLEMENTAL CONTROL (LF)	1			90.50
	650.8000 CURB & GUTTER REFERENCE (LF)	1			90.50
	650.9910.01 SUPPLEMENTAL INSTALLATIONS (7220-01-71) (LS)	1			90.50
	650.8000 CURB GUTTER AND RESURFACING SUPPLEMENTAL CONTROL (LF)	1			90.50
	650.8000 CURB & GUTTER REFERENCE (LF)	1			90.50
	650.9910.01 SUPPLEMENTAL INSTALLATIONS (7220-01-71) (LS)	1			90.50
	650.8000 RESURFACING SUPPLEMENTAL CONTROL (LF)	1			90.50
	650.8000 CURB & GUTTER REFERENCE (LF)	1			90.50
	650.9910.01 SUPPLEMENTAL INSTALLATIONS (7220-01-71) (LS)	1			90.50
	650.8000 CURB GUTTER AND RESURFACING SUPPLEMENTAL CONTROL (LF)	1			90.50
	650.8000 CURB & GUTTER REFERENCE (LF)	1			90.50
	650.9910.01 SUPPLEMENTAL INSTALLATIONS (7220-01-71) (LS)	1			90.50
	650.8000 RESURFACING SUPPLEMENTAL CONTROL (LF)	1			90.50
	650.8000 CURB & GUTTER REFERENCE (LF)	1			90.50
	650.9910.01 SUPPLEMENTAL INSTALLATIONS (7220-01-71) (LS)	1			90.50
	650.8000 CURB GUTTER AND RESURFACING SUPPLEMENTAL CONTROL (LF)	1			90.50
	650.8000 CURB & GUTTER REFERENCE (LF)	1			90.50
	650.9910.01 SUPPLEMENTAL INSTALLATIONS (7220-01-71) (LS)	1			90.50
	650.8000 RESURFACING SUPPLEMENTAL CONTROL (LF)	1			90.50
	650.8000 CURB & GUTTER REFERENCE (LF)	1			90.50
	650.9910.01 SUPPLEMENTAL INSTALLATIONS (7220-01-71) (LS)	1			90.50
	650.8000 CURB GUTTER AND RESURFACING SUPPLEMENTAL CONTROL (LF)	1			90.50
	650.8000 CURB & GUTTER REFERENCE (LF)	1			90.50
	650.9910.01 SUPPLEMENTAL INSTALLATIONS (7220-01-71) (LS)	1			90.50
	650.8000 RESURFACING SUPPLEMENTAL CONTROL (LF)	1			90.50
	650.8000 CURB & GUTTER REFERENCE (LF)	1			90.50
	650.9910.01 SUPPLEMENTAL INSTALLATIONS (7220-01-71) (LS)	1			90.50
	650.8000 CURB GUTTER AND RESURFACING SUPPLEMENTAL CONTROL (LF)	1			90.50
	650.8000 CURB & GUTTER REFERENCE (LF)	1			90.50
	650.9910.01 SUPPLEMENTAL INSTALLATIONS (7220-01-71) (LS)	1			90.50
	650.8000 RESURFACING SUPPLEMENTAL CONTROL (LF)	1			90.50
	650.8000 CURB & GUTTER REFERENCE (LF)	1			90.50
	650.9910.01 SUPPLEMENTAL INSTALLATIONS (7220-01-71) (LS)	1			90.50
	650.8000 CURB GUTTER AND RESURFACING SUPPLEMENTAL CONTROL (LF)	1			90.50
	650.8000 CURB & GUTTER REFERENCE (LF)	1			90.50
	650.9910.01 SUPPLEMENTAL INSTALLATIONS (7220-01-71) (LS)	1			90.50
	650.8000 RESURFACING SUPPLEMENTAL CONTROL (LF)	1			90.50
	650.8000 CURB & GUTTER REFERENCE (LF)	1			90.50
	650.9910.01 SUPPLEMENTAL INSTALLATIONS (7220-01-71) (LS)	1			90.50
	650.8000 CURB GUTTER AND RESURFACING SUPPLEMENTAL CONTROL (LF)	1			90.50
	650.8000 CURB & GUTTER REFERENCE (LF)	1			90.50
	650.9910.01 SUPPLEMENTAL INSTALLATIONS (7220-01-71) (LS)	1			90.50
	650.8000 RESURFACING SUPPLEMENTAL CONTROL (LF)	1			90.50
	650.8000 CURB & GUTTER REFERENCE (LF)	1			90.50
	650.9910.01 SUPPLEMENTAL INSTALLATIONS (7220-01-71) (LS)	1			90.50
	650.8000 CURB GUTTER AND RESURFACING SUPPLEMENTAL CONTROL (LF)	1			90.50
	650.8000 CURB & GUTTER REFERENCE (LF)	1			90.50
	650.9910.01 SUPPLEMENTAL INSTALLATIONS (7220-01-71) (LS)	1			90.50
	650.8000 RESURFACING SUPPLEMENTAL CONTROL (LF)	1			90.50
	650.8000 CURB & GUTTER REFERENCE (LF)	1			90.50
	650.9910.01 SUPPLEMENTAL INSTALLATIONS (7220-01-71) (LS)	1			90.50
	650.8000 CURB GUTTER AND RESURFACING SUPPLEMENTAL CONTROL (LF)	1			90.50
	650.8000 CURB & GUTTER REFERENCE (LF)	1			90.50
	650.9910.01 SUPPLEMENTAL INSTALLATIONS (7220-01-71) (LS)	1			90.50
	650.8000 RESURFACING SUPPLEMENTAL CONTROL (LF)	1			90.50
	650.8000 CURB & GUTTER REFERENCE (LF)	1			90.50
	650.9910.01 SUPPLEMENTAL INSTALLATIONS (7220-01-71) (LS)	1			90.50
	650.8000 CURB GUTTER AND RESURFACING SUPPLEMENTAL CONTROL (LF)	1			90.50
	650.8000 CURB & GUTTER REFERENCE (LF)	1			90.50
	650.9910.01 SUPPLEMENTAL INSTALLATIONS (7220-01-71) (LS)	1			90.50
	650.8000 RESURFACING SUPPLEMENTAL CONTROL (LF)	1			90.50
	650.8000 CURB & GUTTER REFERENCE (LF)	1			90.50
	650.9910.01 SUPPLEMENTAL INSTALLATIONS (7220-01-71) (LS)	1			90.50
	650.8000 CURB GUTTER AND RESURFACING SUPPLEMENTAL CONTROL (LF)	1			90.50
	650.8000 CURB & GUTTER REFERENCE (LF)	1			90.50
	650.9910.01 SUPPLEMENTAL INSTALLATIONS (7220-01-71) (LS)	1			90.50
	650.8000 RESURFACING SUPPLEMENTAL CONTROL (LF)	1			90.50
	650.8000 CURB & GUTTER REFERENCE (LF)	1			90.50
	650.9910.01 SUPPLEMENTAL INSTALLATIONS (7220-01-71) (LS)	1			90.50
	650.8000 CURB GUTTER AND RESURFACING SUPPLEMENTAL CONTROL (LF)	1			90.50
	650.8000 CURB & GUTTER REFERENCE (LF)	1			90.50
	650.9910.01 SUPPLEMENTAL INSTALLATIONS (7220-01-71) (LS)	1			90.50
	650.8000 RESURFACING SUPPLEMENTAL CONTROL (LF)	1			90.50
	650.8000 CURB & GUTTER REFERENCE (LF)	1			90.50
	650.9910.01 SUPPLEMENTAL INSTALLATIONS (7220-01-71) (LS)	1			90.50
	650.8000 CURB GUTTER AND RESURFACING SUPPLEMENTAL CONTROL (LF)	1			90.50
	650.8000 CURB & GUTTER REFERENCE (LF)	1			90.50
	650.9910.01 SUPPLEMENTAL INSTALLATIONS (7220-01-71) (LS)	1			90.50
	650.8000 RESURFACING SUPPLEMENTAL CONTROL (LF)	1			90.50
	650.8000 CURB & GUTTER REFERENCE (LF)	1			90.50
	650.9910.01 SUPPLEMENTAL INSTALLATIONS (7220-01-71) (LS)	1			90.50
	650.8000 CURB GUTTER AND RESURFACING SUPPLEMENTAL CONTROL (LF)	1			90.50
	650.8000 CURB & GUTTER REFERENCE (LF)	1			

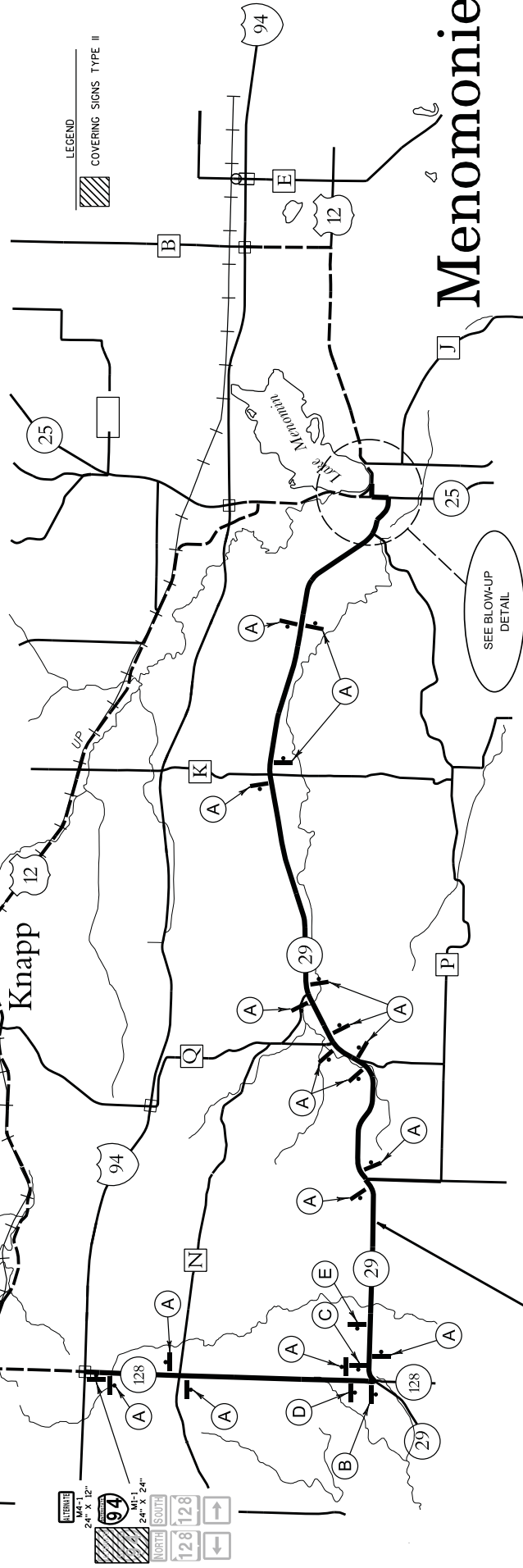
NOTES:

I. ALL ALTERNATE ROUTE SIGNS TO BE PAD FOR AS TRAFFIC CONTROL DETOUR SIGNS.

ORIGINAL ALTERNATE IH-94 ROUTE (TYP.)

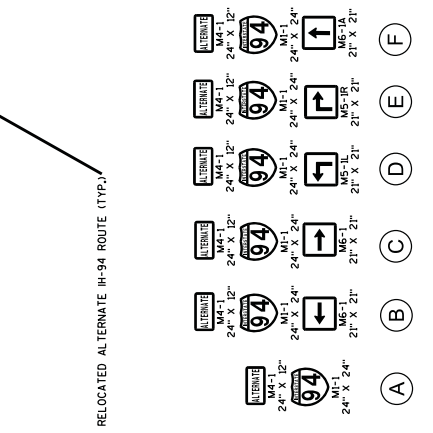
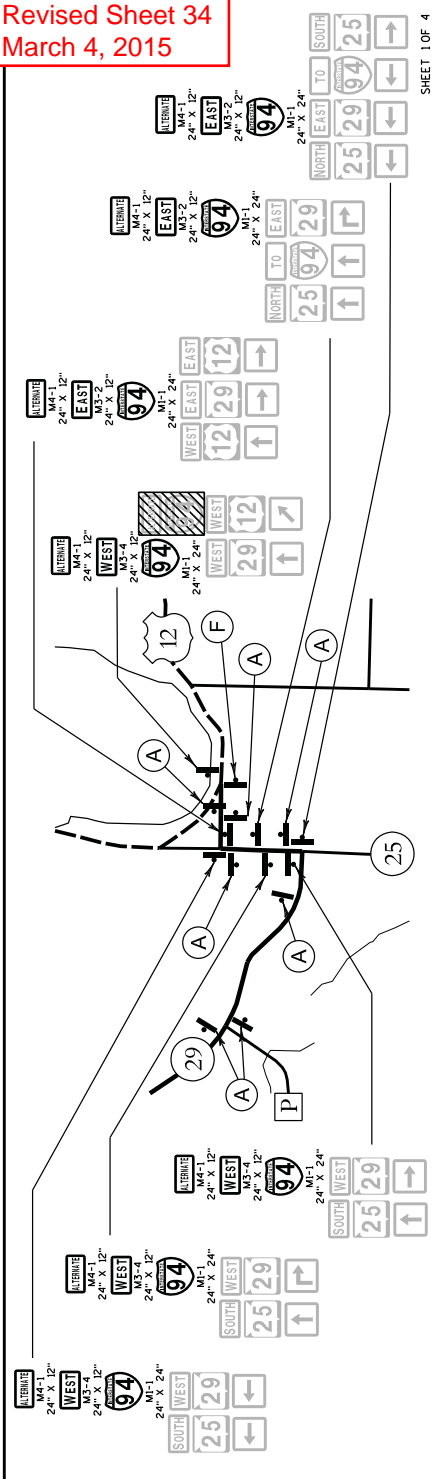
Knapp

Wilson



Menomonie

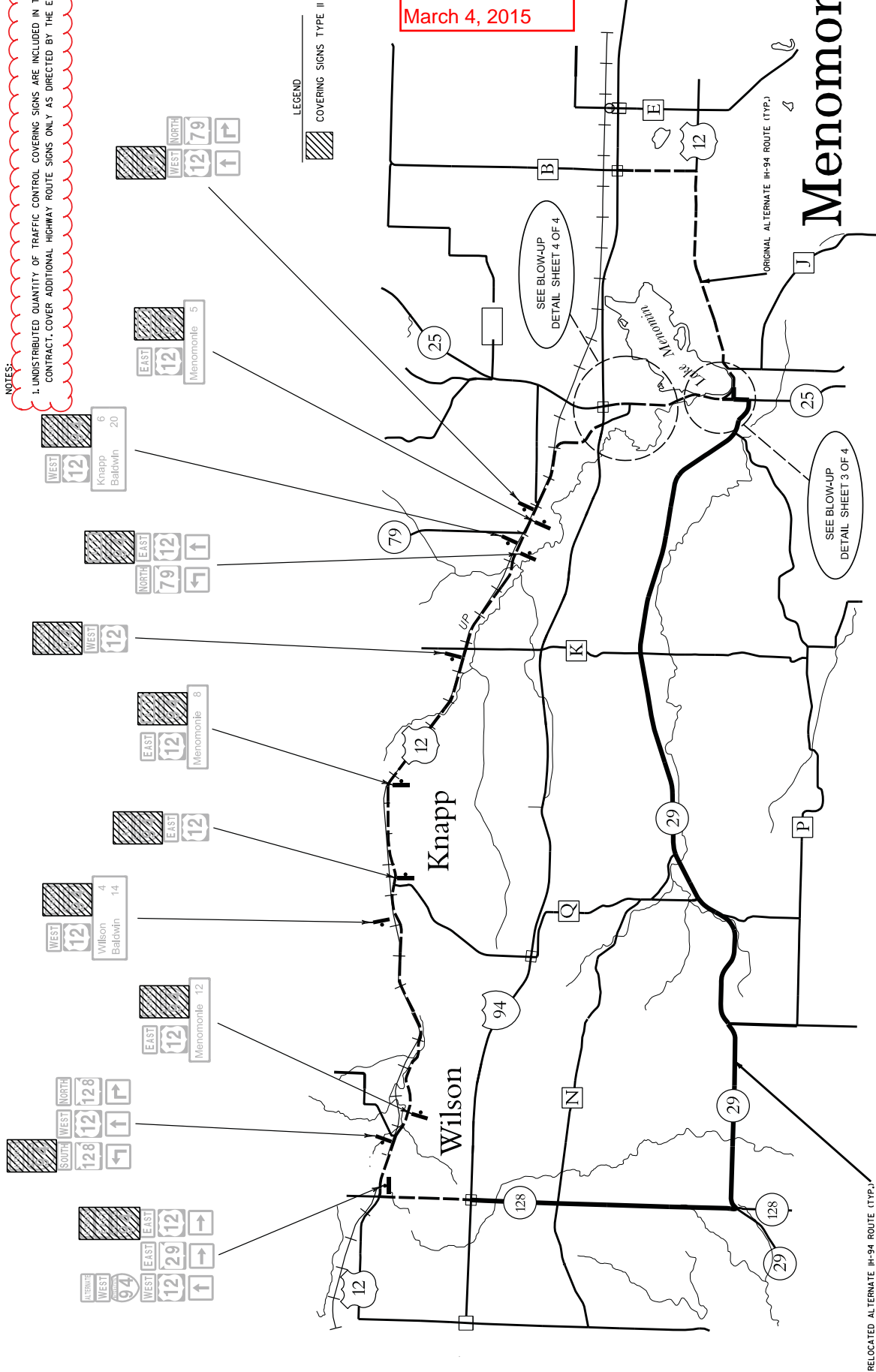
Addendum No. 1
 ID 7600-02-71
 Revised Sheet 34
 March 4, 2015



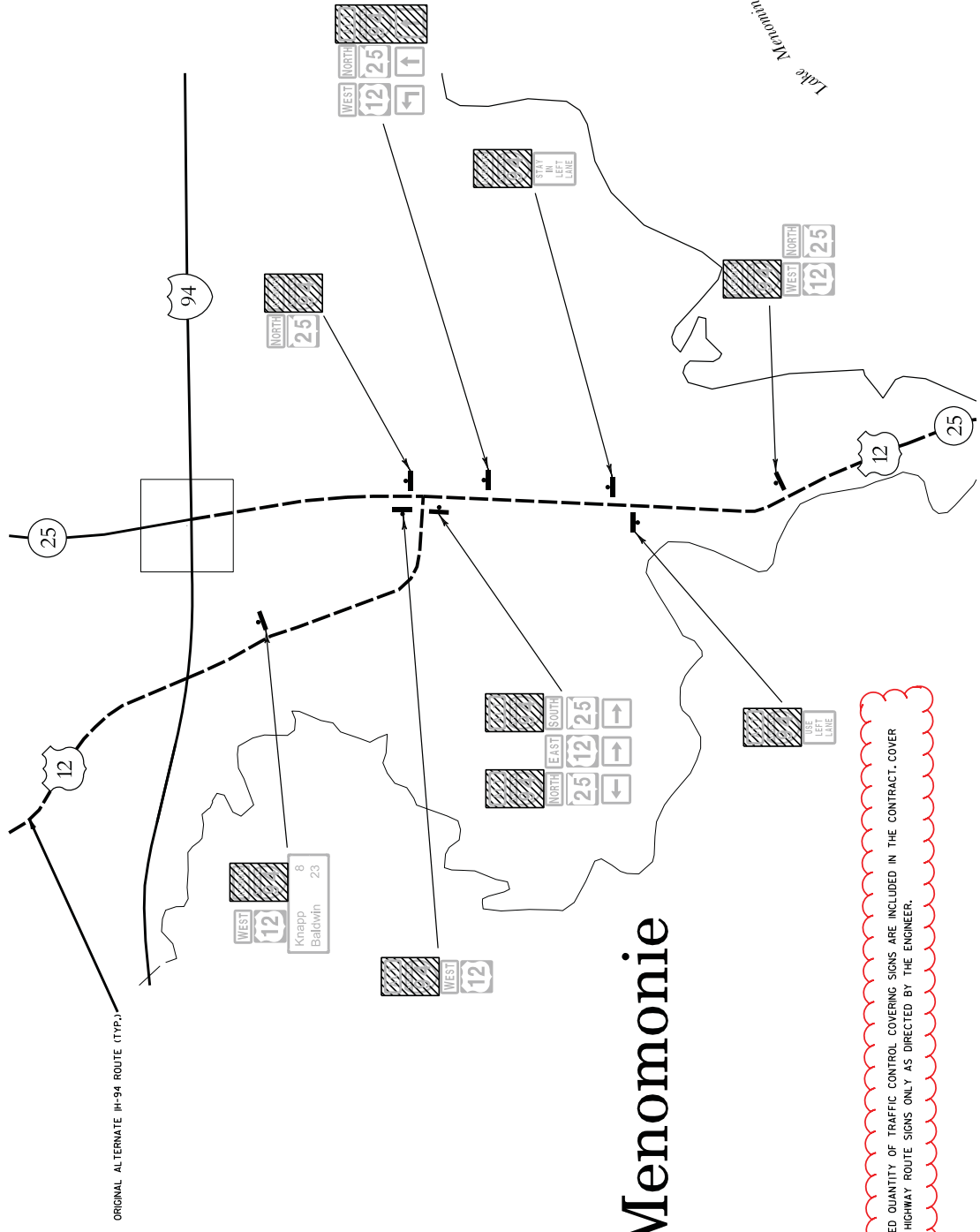
NOTES:

1. UNDISTRIBUTED QUANTITY OF TRAFFIC CONTROL COVERING SIGNS ARE INCLUDED IN THE CONTRACT. COVER ADDITIONAL HIGHWAY ROUTE SIGNS ONLY AS DIRECTED BY THE ENGINEER.

Addendum No. 1
ID 7600-02-71
Revised Sheet 35
March 4, 2015



Addendum No. 1
ID 7600-02-71
Revised Sheet 37
March 4, 2015



LEGEND

COVERING SIGNS TYPE II

NOTES:

1. UNDISTRIBUTED QUANTITY OF TRAFFIC CONTROL COVERING SIGNS ARE INCLUDED IN THE CONTRACT. COVER ADDITIONAL HIGHWAY ROUTE SIGNS ONLY AS DIRECTED BY THE ENGINEER.

PAVEMENT MARKING

Table with columns for PAVEMENT MARKING items: 646.0106, 646.0126, 647.0166, 647.0176, 647.0356, 647.0456, 647.0566, 647.0606, 647.0726, 647.0796. Includes sub-totals for PROJECT START - END, TANTER STREET, MEADOW HILL ROAD, and WOLSKE BAY ROAD.

TEMPORARY PAVEMENT MARKINGS

Table with columns for TEMPORARY PAVEMENT MARKINGS: WORK TO BE COMPLETED DURING STAGE, STATION TO STATION, LOCATION. Includes sub-totals for STAGE 1-5 and PROJECT TOTALS.

TRAFFIC CONTROL DEVICES

Table with columns for TRAFFIC CONTROL DEVICES: WORK TO BE COMPLETED DURING STAGE, LOCATION, STATION, LTRT, PHASE, DAYS IN AND MAINTENANCE, SURVEILLANCE CONTROL, SIGNS, DRUMS, BARRICADES, WARNING LIGHTS, ARROW BOARDS, TRAFFIC CONTROL SIGNS, TUBULAR MARKER POSTS, FLEXIBLE TUBULAR MARKER BASES, PORTABLE CHANGEABLE MESSAGE SIGN (PCMS), CELLULAR COMMUNICATIONS. Includes sub-totals for STAGE 1-5 and PROJECT TOTALS.

Addendum No. 1
ID 7600-02-71
Revised Sheet 52
March 4, 2015

CONSTRUCTION STAKING

STATION	STATION	DESCRIPTION	LF	PROJECT	TOTALS
	1945	USH 12 / STH 25	1	1	1
PROJECT TOTALS			1945	1	1

LIGHTING

CATEGORY	PROJECT	DESCRIPTION	LF	EA	PROJECT TOTALS	EA	PROJECT TOTALS
0010	NORTH BROADWAY	204.0195 REMOVE CONCRETE BASES SCHEDULE 40 2-INCH	400	2	2	2	2
		* 652.0225 CONDUIT RIGID NONMETALLIC SCHEDULE 40 2-INCH LF	400	2	2	2	2
		653.0140 PULL BOXES STEEL 2 1/2-INCH	3600	2	2	2	2
		653.0905 REMOVING PULL BOXES	3600	2	2	2	2
		655.0630 ELECTRICAL WIRE LIGHTING 4 AWG LF	3600	2	2	2	2
		SPV.0060.09 REMOVE STREET LIGHT		2	2	2	2
		SPV.0060.10 INSTALL SALVAGED STREET LIGHT AND CONCRETE BASE		2	2	2	2

* ADDITIONAL QUANTITIES FOUND ELSEWHERE IN PLAN SET

TRAFFIC SIGNALS

CATEGORY	PROJECT	DESCRIPTION	LF	EA	PROJECT TOTALS	EA	PROJECT TOTALS
0020	NORTH BROADWAY	652.0225 CONDUIT RIGID NONMETALLIC SCHEDULE 40 2-INCH LF	330	1	1	1	1
		653.0900 ADJUSTING PULL BOXES	330	1	1	1	1
		654.0101 CONCRETE BASES TYPE 1	330	1	1	1	1
		655.0230 CABLE TRAFFIC SIGNAL 5-14 AWG LF	330	1	1	1	1
		657.0100 PEDESTAL BASES ALUMINUM 11-FT	6	1	1	1	1
		657.0415 TRAFFIC SIGNAL STANDARDS	6	1	1	1	1
		658.0416 PEDESTRIAN SIGNAL FACE 16-INCH	6	1	1	1	1
		658.0500 PEDESTRIAN PUSH BUTTONS	6	1	1	1	1
		658.0635 LED MODULES	6	1	1	1	1
		658.0635 PEDESTRIAN COUNTDOWN TIMER 16-INCH	6	1	1	1	1
		658.0635 PEDESTRIAN SIGNAL HEAD	6	1	1	1	1
		SPV.0060.11 REMOVE PEDESTRIAN SIGNAL HEAD	6	1	1	1	1
		SPV.0060.12 REMOVE PEDESTRIAN PUSH BUTTON	6	1	1	1	1

Addendum No. 1
 ID 7600-02-71
 Revised Sheet 53
 March 4, 2015

SCHEDULE OF ITEMS

REVISED:

CONTRACT:
20150310036PROJECT(S):
7220-01-71
7600-02-70
7600-02-71FEDERAL ID(S):
WISC 2015150
N/A
WISC 2015151

CONTRACTOR : _____

LINE NO	ITEM DESCRIPTION	APPROX. QUANTITY AND UNITS	UNIT PRICE		BID AMOUNT	
			DOLLARS	CTS	DOLLARS	CTS
0700	638.2102 Moving Signs Type II	16.000 EACH	.		.	
0710	638.2602 Removing Signs Type II	24.000 EACH	.		.	
0720	638.3000 Removing Small Sign Supports	22.000 EACH	.		.	
0730	642.5001 Field Office Type B	1.000 EACH	.		.	
0740	643.0200 Traffic Control Surveillance and Maintenance (project) 01. 7220-01-71	106.000 DAY	.		.	
0750	643.0200 Traffic Control Surveillance and Maintenance (project) 02. 7600-02-70	33.000 DAY	.		.	
0760	643.0200 Traffic Control Surveillance and Maintenance (project) 03. 7600-02-71	47.000 DAY	.		.	
0770	643.0300 Traffic Control Drums	25,818.000 DAY	.		.	
0780	643.0420 Traffic Control Barricades Type III	4,307.000 DAY	.		.	

SCHEDULE OF ITEMS

REVISED:

CONTRACT:	PROJECT(S):	FEDERAL ID(S):
20150310036	7220-01-71	WISC 2015150
	7600-02-70	N/A
	7600-02-71	WISC 2015151

CONTRACTOR : _____

LINE NO	ITEM DESCRIPTION	APPROX. QUANTITY AND UNITS	UNIT PRICE		BID AMOUNT	
			DOLLARS	CTS	DOLLARS	CTS
1090	650.5500 Construction Staking Curb Gutter and Curb & Gutter	1,758.000 LF
1100	650.7000 Construction Staking Concrete Pavement	2,055.000 LF
1110	650.8000 Construction Staking Resurfacing Reference	4,530.000 LF
1120	650.8500 Construction Staking Electrical Installations (project) 01. 7600-02-70	LUMP	LUMP	.	.	.
1130	650.9910 Construction Staking Supplemental Control (project) 01. 7220-01-71	LUMP	LUMP	.	.	.
1140	650.9910 Construction Staking Supplemental Control (project) 02. 7600-02-70	LUMP	LUMP	.	.	.
1150	650.9910 Construction Staking Supplemental Control (project) 03. 7600-02-71	LUMP	LUMP	.	.	.
1160	652.0225 Conduit Rigid Nonmetallic Schedule 40 2-Inch	686.000 LF
1170	652.0235 Conduit Rigid Nonmetallic Schedule 40 3-Inch	100.000 LF

SCHEDULE OF ITEMS

REVISED:

CONTRACT:
20150310036

PROJECT(S):
7220-01-71
7600-02-70
7600-02-71

FEDERAL ID(S):
WISC 2015150
N/A
WISC 2015151

CONTRACTOR : _____

LINE NO	ITEM DESCRIPTION	APPROX. QUANTITY AND UNITS	UNIT PRICE		BID AMOUNT	
			DOLLARS	CTS	DOLLARS	CTS
1940	SPV.0105 Special 09. Temporary Crosswalk Access, Sth 25 & 20th Avenue	LUMP	LUMP			.
1950	SPV.0105 Special 10. Temporary Crosswalk Access, Sth 25 & 17th Avenue	LUMP	LUMP			.
1960	SPV.0105 Special 11. Temporary Crosswalk Access, Sth 25 & 13th Avenue	LUMP	LUMP			.
1970	SPV.0105 Special 12. Temporary Crosswalk Access, Sth 25 & 12th Avenue	LUMP	LUMP			.
1980	SPV.0105 Special 13. Bike Box Pavement Marking	LUMP	LUMP			.
2000	SPV.0105 Special 15. Project Concrete Crack Mitigation And Repair Special 7220-01-71	LUMP	LUMP			.
2010	SPV.0105 Special 16. Project Concrete Crack Mitigation And Repair Special 7600-02-70	LUMP	LUMP			.
2020	SPV.0105 Special 17. Project Concrete Crack Mitigation And Repair Special 7600-02-71	LUMP	LUMP			.

SCHEDULE OF ITEMS

REVISED:

CONTRACT:	PROJECT(S):	FEDERAL ID(S):
20150310036	7220-01-71	WISC 2015150
	7600-02-70	N/A
	7600-02-71	WISC 2015151

CONTRACTOR : _____

LINE NO	ITEM DESCRIPTION	APPROX. QUANTITY AND UNITS	UNIT PRICE		BID AMOUNT	
			DOLLARS	CTS	DOLLARS	CTS
2030	SPV.0165 Special 01. Concrete Sidewalk Cure And Seal Treatment	9,902.000 SF
2040	SPV.0170 Special 01. Reheating Hma Pavement Longitudinal Joints Special	90.500 STA
2050	SPV.0180 Special 01. Concrete Pavement 8-Inch Special	5,352.000 SY
2060	SPV.0180 Special 02. Concrete Pavement 10-Inch Special	607.000 SY
2070	SPV.0180 Special 03. Concrete Pavement Repair Special	388.000 SY
2080	SPV.0180 Special 04. Concrete Pavement Replacement Special	455.000 SY
2090	SPV.0180 Special 05. Base Patching Concrete Special	3,220.000 SY
2100	SPV.0180 Special 06. Base Patching Concrete Shes Special	100.000 SY
2110	650.8500 Construction Staking Electrical Installations (project) 01. 7220-01-71	LUMP	LUMP	.	.	.

SCHEDULE OF ITEMS

REVISED:

CONTRACT:
20150310036

PROJECT(S):
7220-01-71
7600-02-70
7600-02-71

FEDERAL ID(S):
WISC 2015150
N/A
WISC 2015151

CONTRACTOR : _____

LINE NO	ITEM DESCRIPTION	APPROX. QUANTITY AND UNITS	UNIT PRICE		BID AMOUNT	
			DOLLARS	CTS	DOLLARS	CTS
2120	650.8500 Construction Staking Electrical Installations (project) 02. 7600-02-71	LUMP	LUMP			.
2130	SPV.0045 Special 01. Portable Changeable Message Sign (PCMS) Cellular Communications	12.000 DAY				.
	SECTION 0001 TOTAL					.
	TOTAL BID					.