



Wisconsin Department of Transportation

April 9, 2015

Division of Transportation Systems Development

Bureau of Project Development
 4802 Sheboygan Avenue, Rm 601
 P O Box 7916
 Madison, WI 53707-7916

Telephone: (608) 266-1631
 Facsimile (FAX): (608) 266-8459

NOTICE TO ALL CONTRACTORS:

Proposal #03: 1107-00-74, WISC 2015 175
Allenton – Fond Du Lac
South County Line to North County Line
USH 41
Dodge County

Letting of April 14, 2015

This is Addendum No. 3, which provides for the following:

Special Provisions

Revised Special Provisions	
Article No.	Description
32	Salt Storage Building, Item SPV.0105.02

Schedule of Items

Revised Bid Item Quantities					
Bid Item	Item Description	Unit	Old Quantity	Revised Quantity	Proposal Total
522.0112	Culvert Pipe Reinforced Concrete Class III 12-Inch	LF	209	167	167

Added Bid Item Quantities					
Bid Item	Item Description	Unit	Old Quantity	Revised Quantity	Proposal Total
205.0200	Excavation Rock	CY	0	5	5
607.5000	Storm Sewer Rock Excavation	CY	0	10	10
608.0312	Storm Sewer Pipe Reinforced Concrete Class III 12-Inch	LF	0	42	42

Plan Sheets

Revised Plan Sheets	
Plan Sheet	Plan Sheet Title (brief description of changes to sheet)
79	Salt Shed Drainage Details – Add inverts and type of pipe
119	Miscellaneous Quantity Change to add rock excavation items
121	Miscellaneous Quantity Change of storm sewer and culvert pipe

Special Provisions

32. Salt Storage Building, Item SPV.0105.02

Replace paragraph 7 with the following:

The Owner reserves the right to consider structures varying in minor respects, including the roof profile, from any specific requirements specified herein, but judged to meet the intent of this specification.

Schedule of Items

Attached, dated April 9, 2015 is the revised Schedule of Items Page 4 and 15.

Plan Sheets

The following 8½ x 11-inch sheets are attached and made part of the plans for this proposal:
Revised: 79, 119, and 121.

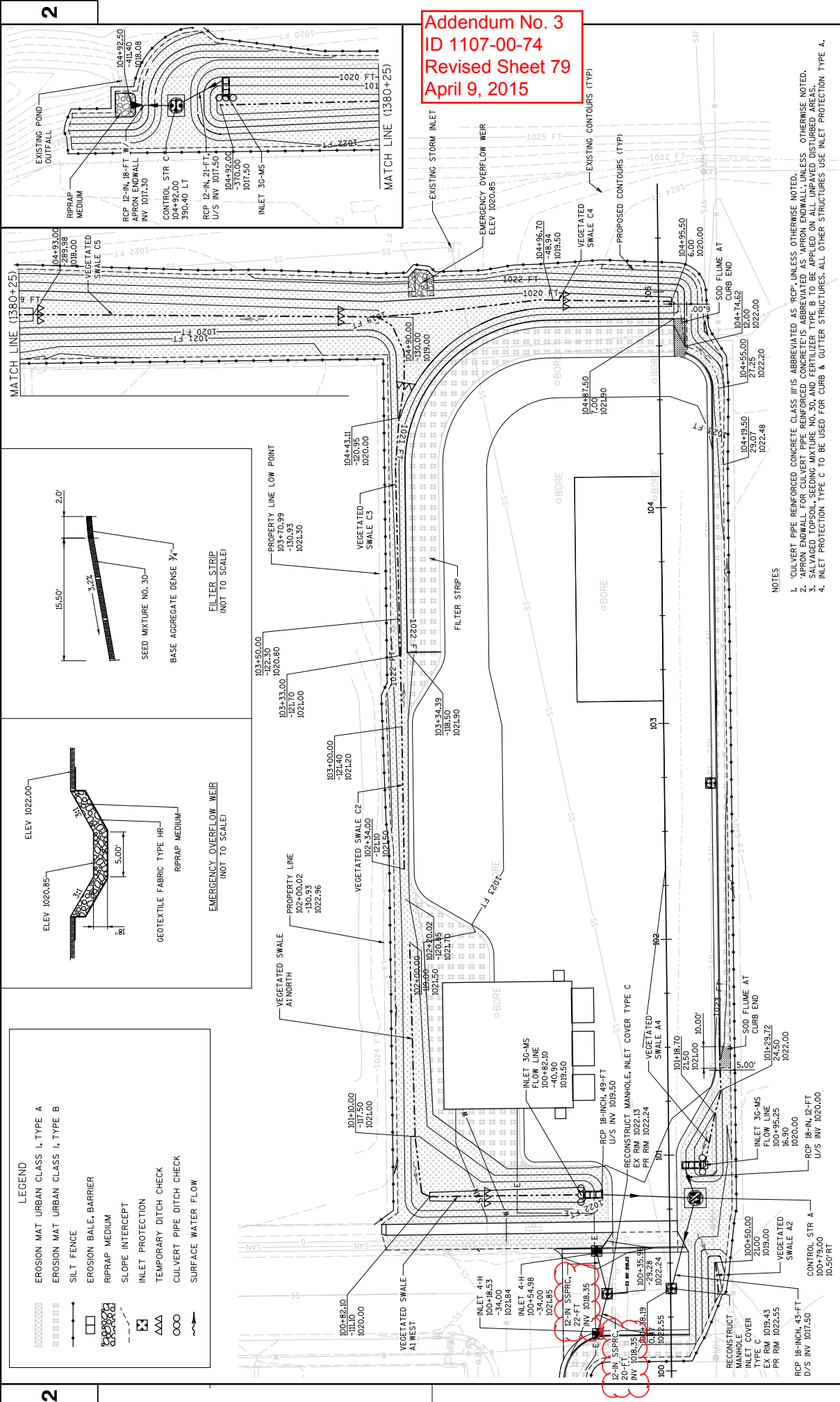
The responsibility for notifying potential subcontractors and suppliers of these changes remains with the prime contractor.

Sincerely,

Mike Coleman

Proposal Development Specialist
Proposal Management Section

END OF ADDENDUM



Addendum No. 3
ID 1107-00-74
Revised Sheet 79
April 9, 2015

LEGEND

	EROSION MAT URBAN CLASS I, TYPE A
	EROSION MAT URBAN CLASS I, TYPE B
	SILT FENCE
	EROSION BALE, BARRIER
	RIPRAP MEDIUM
	SLOPE INTERCEPT
	INLET PROTECTION
	TEMPORARY DITCH CHECK
	CULVERT PIPE DITCH CHECK
	SURFACE WATER FLOW

- NOTES**
1. 'CULVERT PIPE REINFORCED CONCRETE CLASS III IS ABBREVIATED AS 'RCP', UNLESS OTHERWISE NOTED.
 2. 'APRON ENDWALL FOR CULVERT PIPE REINFORCED CONCRETE IS ABBREVIATED AS 'APRON ENDWALL', UNLESS OTHERWISE NOTED.
 3. SALVAGED TOPSOIL, SEEDING MIXTURE NO. 30, AND FERTILIZER TYPE B TO BE APPLIED ON ALL UNPAVED DISTURBED AREAS.
 4. INLET PROTECTION TYPE C TO BE USED FOR CURB & GUTTER STRUCTURES. ALL OTHER STRUCTURES USE INLET PROTECTION TYPE A.

PROJECT NO: 1107-00-74 **COUNTY: DODGE** **HWY: USH 41** **SHEET 79**

DRAINAGE & EROSION CONTROL SALT SHED **PLOT SCALE: 1:140**

FILE NAME: Y:\n\l\w\k\ee\20100s\20155_00\Erg_Docs\Sheets\022015_0c.dgn **PLOT BY: TWGTT** **PLOT DATE: 4/9/2015**

SALT SHED EARTHWORK	
ITEM	SPV.0105.04
GRADING SALT STORAGE SITE (LS)	1
TOTALS	1

NOTE: CUT = 1525 CY, FILL = 2875 CY (FOR INFORMATION ONLY)

SALT SHED EARTHWORK CONTINUED			
ITEM	205.0200	ITEM	607.5000
EXCAVATION ROCK	5	STORM SEWER ROCK EXCAVATION	10
TOTALS	5	TOTALS	10

PREPARATION WORK					
ITEMS	211.0400	ITEMS	213.0100	ITEMS	305.0500
PREPARE FINISHING	1	SHAPING	1	SHAPING	1
FOUNDATION FOR ROADWAY SHOULDERS	-	ROADWAY SHOULDERS	-	ROADWAY SHOULDERS	1021
ASPHALTIC PAVING (1107-00-74)	470	SHOULDERS (1107-00-74)	470	SHOULDERS (1107-00-74)	468
TOTALS	1	TOTALS	1	TOTALS	1549

ABANDON CATTLE PASS					
ITEMS	521.0124	ITEMS	521.1024	ITEMS	SPV.0060.02
CULVERT PIPE	168	APRON ENDWALLS FOR CATTLE PASS	2	APRON ENDWALLS FOR CATTLE PASS	1
CORRUGATED STEEL CULVERT PIPE 24-INCH (0.079" THICKNESS)	172	24-INCH (0.079" THICKNESS)	2	24-INCH (0.079" THICKNESS)	1
TOTALS	168	TOTALS	4	TOTALS	6

AGGREGATE					
ITEMS	305.0110	ITEMS	305.0120	ITEMS	312.0110
BASE AGGREGATE DENSE 3/4-INCH	2615	BASE AGGREGATE DENSE 1 1/4-INCH	1234	SELECT CRUSHED MATERIAL	855
TOTALS	2615	TOTALS	1234	TOTALS	855

BASE PATCHING AND CONCRETE REPAIR							
ITEMS	390.0403	ITEMS	416.1715	ITEMS	416.0610	ITEMS	416.0620
CONCRETE SHES	1883	CONCRETE PAVEMENT REPAIR SHES	3520	CONCRETE PAVEMENT REPAIR SHES	869	DRILLED TIE BARS	4345
TOTALS	1700	TOTALS	1,660	TOTALS	501	TOTALS	1249

Addendum No. 3
ID 1107-00-74
Revised Sheet 119
April 9, 2015

SCHEDULE OF ITEMS

REVISED:

CONTRACT:
20150414003PROJECT(S):
1107-00-74FEDERAL ID(S):
WISC 2015175

CONTRACTOR : _____

LINE NO	ITEM DESCRIPTION	APPROX. QUANTITY AND UNITS	UNIT PRICE		BID AMOUNT	
			DOLLARS	CTS	DOLLARS	CTS
0330	460.2000 Incentive Density HMA Pavement	37,330.000 DOL	1.00000		37330.00	
0340	460.4000 HMA Cold Weather Paving	3,000.000 TON	.		.	
0350	460.4110.S Reheating HMA Pavement Longitudinal Joints	54,600.000 LF	.		.	
0360	465.0400 Asphaltic Shoulder Rumble Strips	151,000.000 LF	.		.	
0370	520.1012 Apron Endwalls for Culvert Pipe 12-Inch	2.000 EACH	.		.	
0380	521.0112 Culvert Pipe Corrugated Steel 12-Inch	3.500 LF	.		.	
0390	521.0124 Culvert Pipe Corrugated Steel 24-Inch	1,000.000 LF	.		.	
0400	521.1024 Apron Endwalls for Culvert Pipe Steel 24-Inch	4.000 EACH	.		.	
0410	522.0112 Culvert Pipe Reinforced Concrete Class III 12-Inch	167.000 LF	.		.	
0420	522.0118 Culvert Pipe Reinforced Concrete Class III 18-Inch	160.000 LF	.		.	
0430	522.1012 Apron Endwalls for Culvert Pipe Reinforced Concrete 12-Inch	15.000 EACH	.		.	

SCHEDULE OF ITEMS

REVISED:

CONTRACT:
20150414003

PROJECT(S):
1107-00-74

FEDERAL ID(S):
WISC 2015175

CONTRACTOR : _____

LINE NO	ITEM DESCRIPTION	APPROX. QUANTITY AND UNITS	UNIT PRICE		BID AMOUNT	
			DOLLARS	CTS	DOLLARS	CTS
1500	SPV.0105 Special 04. Grading Salt Storage Site	LUMP	LUMP			.
1510	SPV.0105 Special 05. Brine Storage And Dispensing System	LUMP	LUMP			.
1520	SPV.0105 Special 06. Utilities Salt Storage Site	LUMP	LUMP			.
1530	SPV.0180 Special 01. Removing Asphaltic Surface Milling Second Pass	SY	14,700.000			.
1540	603.1442 Concrete Barrier Type S42C	LF	72.000			.
1550	205.0200 Excavation Rock	CY	5.000			.
1560	607.5000 Storm Sewer Rock Excavation	CY	10.000			.
1570	608.0312 Storm Sewer Pipe Reinforced Concrete Class III 12-Inch	LF	42.000			.
	SECTION 0001 TOTAL					.
	TOTAL BID					.