



Wisconsin Department of Transportation

April 10, 2015

Division of Transportation Systems Development

Bureau of Project Development
 4802 Sheboygan Avenue, Rm 601
 P O Box 7916
 Madison, WI 53707-7916

Telephone: (608) 266-1631
 Facsimile (FAX): (608) 266-8459

NOTICE TO ALL CONTRACTORS:

**Proposal #23: 4332-05-71
 V Mishicot, CTH B
 East Twin River Bridge B-36-0318
 CTH B
 Manitowoc County**

Letting of April 14, 2015

This is Addendum No. 1, which provides for the following:

Special Provisions

Revised Special Provisions	
Article No.	Description
9	Construction Over or Adjacent to Navigable Waters

Schedule of Items

Revised Bid Item Quantities					
Bid Item	Item Description	Unit	Old Quantity	Revised Quantity	Proposal Total
455.0605	Tack Coat	GAL	20	40	40

Delete Bid Item Quantities					
Bid Item	Item Description	Unit	Old Quantity	Revised Quantity	Proposal Total
455.0220	Asphaltic Material PG64-28	GAL	12	0	0

Added Bid Item Quantities					
Bid Item	Item Description	Unit	Old Quantity	Revised Quantity	Proposal Total
455.0120	Asphaltic Material PG64-28	TON	0	12	12
601.0600	Concrete Curb Pedestrian	LF	0	34	34
602.0515	Curb Ramp Detectable Warning Field Natural Patina	SF	0	16	16
628.6005	Turbidity Barrier	SY	0	186	186

Plan Sheets

Revised Plan Sheets	
Plan Sheet	Plan Sheet Title (brief description of changes to sheet)
3	Storm Sewer and Erosion Control Details: Added turbidity barrier at bridge abutments.
7 & 8	Miscellaneous Quantities: Updated for added, deleted and revised bid items.
11	Roadway Plan & Profile: Added concrete curb pedestrian at curb ramps and detectable warning fields.
22A	SDD 8E 11-2 Turbidity Barrier: added standard detail

Special Provisions

9. Construction Over or Adjacent to Navigable Waters

Add the following paragraph:

Complete the Waterway Marker Application and Permit form and submit to Wayne Ringquist at the WDNR and to the local municipality having jurisdictional authority over the area.

Schedule of Items

Attached, dated April 10, 2015, are the revised Schedule of Items Pages 2, 3, and 7.

Plan Sheets

The following 8½ x 11-inch sheets are attached and made part of the plans for this proposal:

Revised: 3, 7, 8, and 11.

Added: 22A

The responsibility for notifying potential subcontractors and suppliers of these changes remains with the prime contractor.

Sincerely,

Mike Coleman

Proposal Development Specialist
Proposal Management Section

END OF ADDENDUM

REMOVING CURB AND GUTTER, ITEM NO. 204.0150

LOCATION	LF
SW QUADRANT	143
SE QUADRANT	143
NW QUADRANT	128
NE QUADRANT	128
TOTAL	542

REMOVING CONCRETE SIDEWALK, ITEM NO. 204.0155

LOCATION	LF
SE QUADRANT	59
NE QUADRANT	61
TOTAL	120

REMOVING GUARDRAIL, ITEM NO. 204.0165

LOCATION	EACH
SW QUADRANT	80
SE QUADRANT	90
NW QUADRANT	105
NE QUADRANT	75
TOTAL	350

REMOVING INLETS, ITEM NO. 204.0220

LOCATION	EACH
25+78, LT	1
25+78, RT	1
TOTAL	2

REMOVING STORM SEWER 15-INCH, ITEM 204.0245

LOCATION	FROM	TO	LF
25+78	INLET LT	INLET RT	25
25+78	INLET RT	ENDWALL	32
TOTAL			57

BASE AGGREGATE DENSE 1 1/4-INCH, ITEM NO. 305.0120

LOCATION	TONS
23+60 - STRUCTURE	480
STRUCTURE - 27+25.45	415
SIDEWALKS	65
TOTALS	940

EARTHWORK SUMMARY

DIVISION	CAT	FROM/TO STATION	LOCATION	EXCAVATION COMMON (NOTE 1) (ITEM #205.0100) CUT (NOTE 2)	SALVAGED/ UNSEALABLE PAVEMENT MATERIAL (NOTE 3)	AVAILABLE MATERIAL (NOTE 4)	UNEXPANDED FILL (NOTE 5)	EXPANDED FILL FACTOR (NOTE 6)	MASS ORDINATE +/- (NOTE 7)	WASTE (ITEM #208.0100) (NOTE 8)	BORROW (ITEM #208.0100) (NOTE 8)
4332+571	0010	21+60 - 24+45	SOUTH OF BRIDGE	205	23	182	135	160	13	13	-
2	0010	26+15 - 27+24.45	NORTH OF BRIDGE	245	21	224	335	419	-105	-	179
TOTALS				450	44	406	470	588	-182	13	179

- 1) IF BBS IS REQUIRED WILL BE PAID AS COMMON EXCAVATION ITEM NUMBER 205.0100
- 2) SALVAGED UNSEALABLE PAVEMENT MATERIAL IS INCLUDED IN CUT
- 3) SALVAGED UNSEALABLE PAVEMENT MATERIAL EQUALS AREA OF PROJECT PAVEMENT REMOVAL - TYPICAL EXISTING PAVEMENT
- 4) AVAILABLE MATERIAL = CUT - SALVAGED UNSEALABLE PAVEMENT MATERIAL
- 5) UNEXPANDED FILL = EXCESS OF MATERIAL WITHIN THE DIVISION MINUS INDICATES A SHORTAGE OF MATERIAL WITHIN THE DIVISION
- 6) EXPANDED FILL FACTOR = 1.25
- 7) THE MASS ORDINATE +/- OR - QTY CALCULATED FOR THE DIVISION PLUS QUANTITY INDICATES AN EXCESS OF MATERIAL WITHIN THE DIVISION MINUS INDICATES A SHORTAGE OF MATERIAL WITHIN THE DIVISION
- 8) BORROW = (ABSOLUTE VALUE OF MASS ORDINATE / EXPANDED FILL FACTOR) * BORROW FACTOR

CONCRETE PAVEMENT APPROACH SLAB, ITEM NO. 415.0410

LOCATION	SY
SOUTH APPROACH	56
NORTH APPROACH	56
TOTALS	112

ASPHALT ITEMS

LOCATION	#455.0120 ASPHALTIC MATERIAL P-66428 TONS	#455.0605 TACK COAT TONS	#460.1101 HMA PAVEMENT TYPE E-1 TONS
23+60 - STRUCTURE	7	22	128
STRUCTURE - 27+25.45	5	18	97
TOTALS	12	40	225

STORM SEWER PIPE REINFORCED CONCRETE CLASS III 15-INCH, ITEM NO. 608.0315

LOCATION	FROM	TO	LF	INV. ELEV.	DIS. ELEV.
24+72, LT - 24+72, RT	CB1	CB2	34	604.92	604.56
24+72, RT - 24+78, RT	CB2	EB3	26	604.46	604.26
TOTAL			60		

CONCRETE CURB AND GUTTER 30-INCH TYPE D, ITEM NO. 601.0411

LOCATION	LF
SW QUADRANT	135
SE QUADRANT	135
NW QUADRANT	120
NE QUADRANT	120
TOTAL	510

DRAINAGE STRUCTURE TABLE

LOCATION	#611.0624 INLET COVERS EACH	#611.1230 CATCH BASINS EACH	#522.1015 APRON ENDWALLS FOR CULVERT PIPE REINFORCED CONCRETE 18-INCH EACH	FLOWLINE ELEVATION	BOTTOM ELEVATION	DEPTH
24+72, 17.6' LT	1	1	---	609.09	602.92	6.17
24+72, 17.5' RT	1	1	---	609.09	602.46	6.63
24+78, RT	---	---	1	---	604.26	---
TOTAL	2	2	1			

STRUCTURE DEPTH INCLUDES 2" FOR SUMP AND 0.75" FOR CASTING DEPTH AND ADJUSTING RINGS.

Addendum No. 1
ID 4332-05-71
Revised Sheet 7
April 10, 2015

CONCRETE SIDEWALK 4-INCH, ITEM NO. 602.0405

LOCATION	SF
SW QUADRANT	950
SE QUADRANT	805
NW QUADRANT	715
NE QUADRANT	715
TOTAL	3185

WATER, ITEM NO. 624.0100

LOCATION	M/GAL
23+60 - STRUCTURE	1.9
STRUCTURE--27+25.45	1.6
TOTALS	3.5

EROSION CONTROL ITEMS

LOCATION	MEDIUM RIMP CT	#625.0105 TORSOIL SF	#628.1504 SILT FENCE LF	#628.1520 SILT FENCE MAINTENANCE LF	628.2004 EROSION MAT CLASS 1 TYPE B SF	#628.0210 FERTILIZER TYPE B GWT	#630.0120 SEED MIXTURE NO.20 LBS	#630.0200 SEEDING TEMPORARY LBS	#645.0120 * GEOTEXTILE FABRIC TYPE HR SF
NW QUADRANT	0	325	140	140	325	0.20	9	9	0
SW QUADRANT	0	175	140	140	175	0.13	5	5	0
SE QUADRANT	0	275	140	140	275	0.17	7	7	0
NE QUADRANT	70	325	145	145	325	0.20	9	9	100
TOTALS	70	1100	565	565	1100	0.70	30	30	100*

* - ADDITIONAL QUANTITIES SHOWN ON THE STRUCTURE PLANS FOR ITEM NO. 645.0120.

INLET PROTECTION

LOCATION	#628.7005 TYPE A EACH	#628.7015 INLETP PROTECTION TYPE C EACH
SW QUADRANT	2	2
SE QUADRANT	2	2
NW QUADRANT	0	1
NE QUADRANT	0	1
TOTAL	4	6

REMOVING SIGNS TYPE II AND REMOVING SMALL SIGN SUPPORTS

LOCATION	#638.2602 REMOVING SIGNS TYPE II EACH	#638.3000 REMOVING SMALL SIGN SUPPORTS EACH
SW QUADRANT	1	1
SE QUADRANT	1	1
NW QUADRANT	1	1
NE QUADRANT	1	1
TOTAL	4	4

CURB RAMP DETECTABLE WARNING FIELDS NATURAL PATINA, ITEM 602.0515

LOCATION	SF
23+70 LT	8
23+70 RT	8
TOTALS	16

CONCRETE CURB PEDESTRIAN ITEM 601.0600

LOCATION	LF
23+70 LT	18
23+70 RT	16
TOTALS	34

PAVEMENT MARKING EPOXY 4-INCH, ITEM NO. 646.0106

LOCATION	DESCRIPTION	LF
23+60 - 27+25.45	LEFT EDGE LINE	365
23+60 - 27+25.45	CENTERLINE	730
23+60 - 27+25.45	RIGHT EDGE LINE	365
TOTAL		1460

CONSTRUCTION STAKING

LOCATION	STORM SEWER EACH	#650.4000 SUBGRADE LF	#650.4500 SUBGRADE LF	#650.5000 CONSTRUCTION STAKING CURB & GUTTER LF	#650.5500 CONSTRUCTION STAKING SLOPE STAKES LF
23+60 - STRUCTURE	3	135	135	270	135
STRUCTURE--27+25.45	0	120	120	240	120
TOTALS	3	265	255	510	255

SAWING ASPHALT AND SAWING CONCRETE

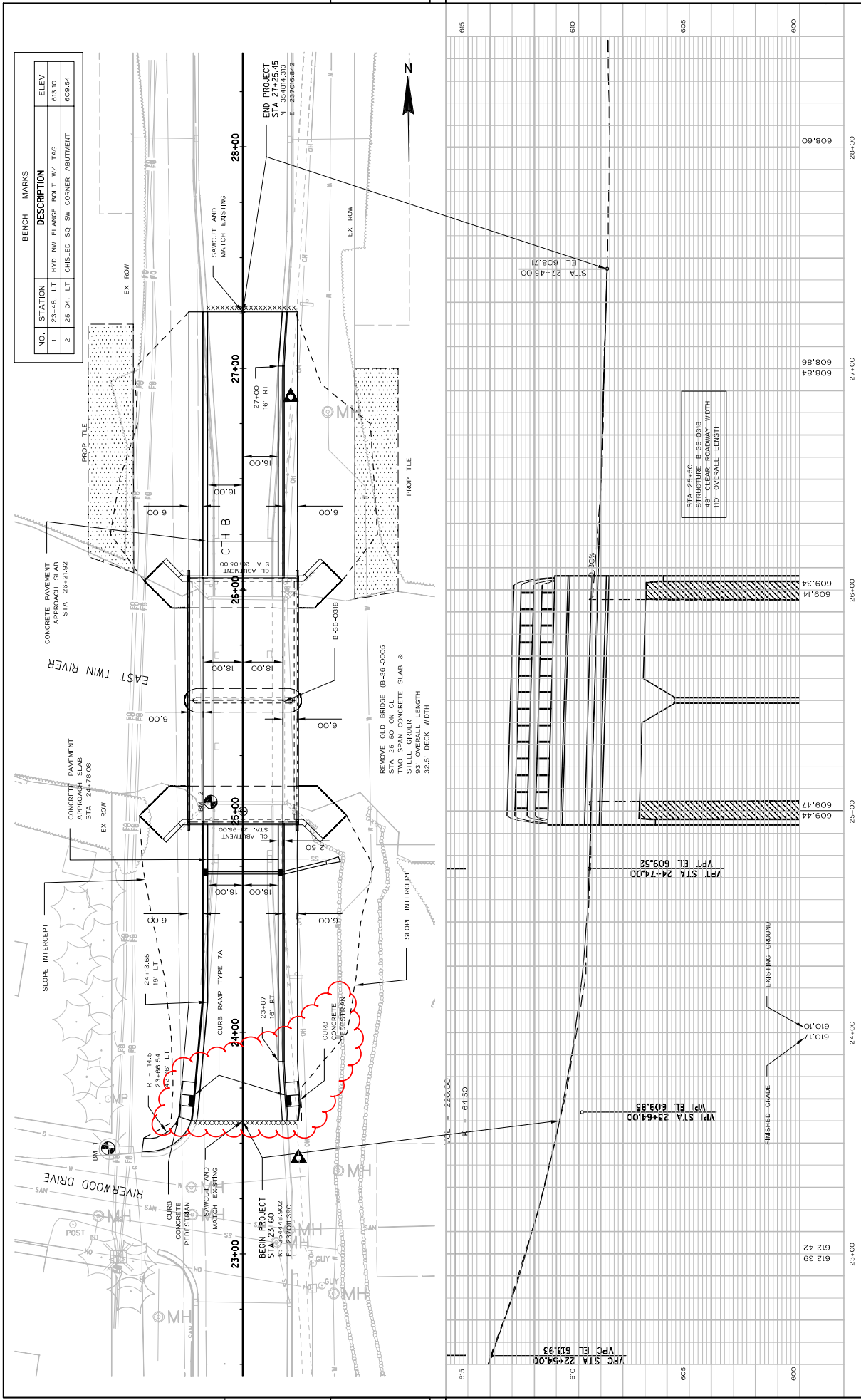
LOCATION	#690.0150 ASPHALT LF	#690.0250 SAWING CONCRETE LF
23+60	38	5
27+25.45	34	5
TOTALS	72	10

TURBIDITY BARRIER ITEM 628.6005

LOCATION	SY
SOUTH ABUTMENT CENTER PIER	93
NORTH ABUTMENT	245
TOTALS	431

Addendum No. 1
ID 4332-05-71
Revised Sheet 8
April 10, 2015

Addendum No. 1
 ID 4332-05-71
 Revised Sheet 11
 April 10, 2015



BENCH MARKS			
NO.	STATION	DESCRIPTION	ELEV.
1	23+48.17	HYD RW FLANGE BOLT W/ TAG	603.10
2	25+04.17	CHISEL SQ SW CORNER ABUTMENT	609.64

PROJECT NO: 4332-05-71
 COUNTY: MANITOWOC
 HWY: CTH B
 ROADWAY PLAN & PROFILE
 SHEET 11
 WISDOT/CADDIS SHEET 40

FILE NAME: I:\PROJECTS\12320\DWG\050101_PP.DWG
 PLOT DATE: 3/30/2015 4:28 PM
 PLOT BY: J.M.P. KESTIN
 PLOT NAME:

5

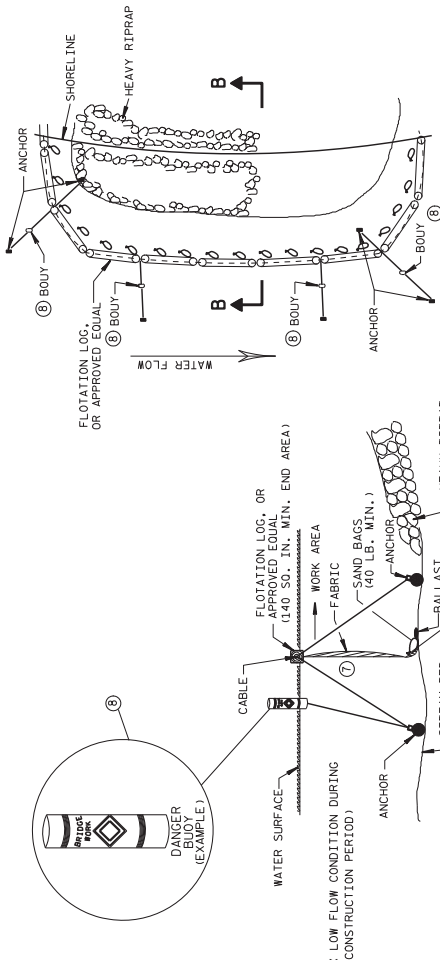
5

GENERAL NOTES

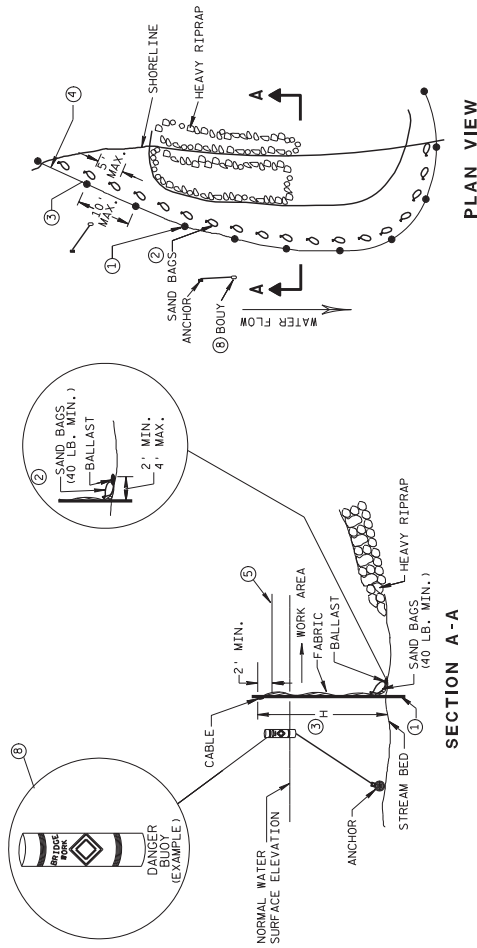
DETAILS OF CONSTRUCTION, MATERIALS AND WORKMANSHIP NOT SHOWN ON THIS DRAWING SHALL CONFORM TO THE PERTINENT REQUIREMENTS OF THE STANDARD SPECIFICATIONS AND THE APPLICABLE SPECIAL PROVISIONS.

TURBIDITY BARRIER MAY BE REMOVED AT THE ENGINEER'S DISCRETION, WHEN PERMANENT EROSION CONTROL MEASURES HAVE BEEN ESTABLISHED.

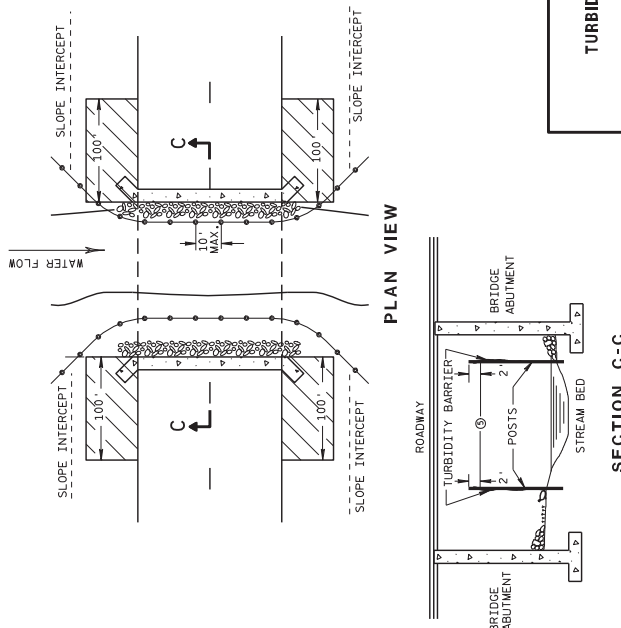
- ① DRIVEN STEEL POSTS, PIPES, OR CHANNELS, LENGTH SHALL BE SUFFICIENT TO SECURELY SUPPORT BARRIER AT HIGH WATER ELEVATIONS.
- ② SANDBAGS TO BE USED AS ADDITIONAL BALLAST WHEN ORDERED BY THE ENGINEER TO MEET ADVERSE FIELD CONDITIONS, SPACE AS APPROPRIATE FOR SITE CONDITIONS.
- ③ WHEN BARRIER HEIGHT, H, EXCEEDS 8 FT., POST SPACING MAY NEED TO BE DECREASED.
- ④ IN WATERWAYS SUBJECT TO FLUCTUATING WATER ELEVATIONS, PROVISIONS SHOULD BE MADE TO ALLOW THE WATER TO EQUALIZE ON EACH SIDE OF THE BARRIER. THIS MAY BE ACCOMPLISHED BY LEAVING A PORTION OF THE BARRIER OPEN ON THE UPSTREAM END.
- ⑤ ESTIMATED HIGH WATER ELEVATION DURING CONSTRUCTION PERIOD, MINIMUM BARRIER HEIGHT SHALL BE 2' GREATER THAN EITHER THE CO ELEVATION OR THE ESTIMATED HIGH WATER ELEVATION DURING CONSTRUCTION, WHICHEVER IS GREATER.
- ⑥ FLOAT ALTERNATIVE WILL ONLY BE ALLOWED WITH WRITTEN APPROVAL OF THE ENGINEER, AND IS MEANT FOR LOCATIONS WHERE BED ROCK PREVENTS THE INSTALLATION OF POSTS.
- ⑦ ALLOW SUFFICIENT SLACK VERTICALLY AND HORIZONTALLY SO THAT SEDIMENT BUILD UP WILL NOT SEPARATE OR LOWER THE TURBIDITY BARRIER.
- ⑧ USE AS DIRECTED BY COAST GUARD OR DNR PERMIT WHEN WORKING IN NAVIGABLE WATERWAYS.



TURBIDITY BARRIER FLOAT ALTERNATIVE
CAUTION - SEE NOTE 6



TURBIDITY BARRIER STANDARD POST INSTALLATION



TURBIDITY BARRIER DETAIL SHOWING TYPICAL PLACEMENT AT STRUCTURES

Addendum No. 1
ID 4332-05-71
Added Sheet 22A
April 10, 2015

TURBIDITY BARRIER
STATE OF WISCONSIN DEPARTMENT OF TRANSPORTATION
APPROVED 6/04/02 DATE
/s/ Beth Connors CHIEF ROADWAY DEVELOPMENT ENGINEER
PHWA

SCHEDULE OF ITEMS

REVISED:

CONTRACT:
20150414023PROJECT(S):
4332-05-71FEDERAL ID(S):
N/A

CONTRACTOR : _____

LINE NO	ITEM DESCRIPTION	APPROX. QUANTITY AND UNITS	UNIT PRICE		BID AMOUNT	
			DOLLARS	CTS	DOLLARS	CTS
0100	210.0100 Backfill Structure	840.000 CY
0110	213.0100 Finishing Roadway (project) 01. 4332-05-71	1.000 EACH
0120	305.0120 Base Aggregate Dense 1 1/4-Inch	940.000 TON
0130	415.0410 Concrete Pavement Approach Slab	112.000 SY
0150	455.0605 Tack Coat	40.000 GAL
0160	460.1101 HMA Pavement Type E-1	225.000 TON
0170	460.2000 Incentive Density HMA Pavement	150.000 DOL	1.00000	.	150.00	.
0180	502.0100 Concrete Masonry Bridges	641.000 CY
0190	502.3200 Protective Surface Treatment	746.000 SY
0200	505.0405 Bar Steel Reinforcement HS Bridges	11,392.000 LB
0210	505.0605 Bar Steel Reinforcement HS Coated Bridges	88,814.000 LB

SCHEDULE OF ITEMS

REVISED:

CONTRACT:
20150414023PROJECT(S):
4332-05-71FEDERAL ID(S):
N/A

CONTRACTOR : _____

LINE NO	ITEM DESCRIPTION	APPROX. QUANTITY AND UNITS	UNIT PRICE		BID AMOUNT	
			DOLLARS	CTS	DOLLARS	CTS
0220	513.7020 Railing Steel Type C4 (structure) 01. B-36-318	LUMP	LUMP			.
0230	516.0500 Rubberized Membrane Waterproofing	36.000 SY		.		.
0240	522.1015 Apron Endwalls for Culvert Pipe Reinforced Concrete 15-Inch	1.000 EACH		.		.
0250	550.0500 Pile Points	31.000 EACH		.		.
0260	550.1120 Piling Steel HP 12-Inch X 53 Lb	1,665.000 LF		.		.
0270	601.0411 Concrete Curb & Gutter 30-Inch Type D	510.000 LF		.		.
0280	602.0405 Concrete Sidewalk 4-Inch	3,185.000 SF		.		.
0290	602.0515 Curb Ramp Detectable Warning Field Natural Patina	16.000 SF		.		.
0300	606.0200 Riprap Medium	70.000 CY		.		.
0310	606.0300 Riprap Heavy	242.000 CY		.		.

SCHEDULE OF ITEMS

REVISED:

CONTRACT:
20150414023

PROJECT(S):
4332-05-71

FEDERAL ID(S):
N/A

CONTRACTOR : _____

LINE NO	ITEM DESCRIPTION	APPROX. QUANTITY AND UNITS	UNIT PRICE		BID AMOUNT	
			DOLLARS	CTS	DOLLARS	CTS
0640	715.0502 Incentive Strength Concrete Structures	3,846.000 DOL	1.00000		3846.00	
0650	SPV.0195 Special 01. Select Crushed Material For Travel Corridor	66.000 TON	.		.	
0660	455.0120 Asphaltic Material PG64-28	12.000 TON	.		.	
0670	601.0600 Concrete Curb Pedestrian	34.000 LF	.		.	
0680	602.0515 Curb Ramp Detectable Warning Field Natural Patina	16.000 SF	.		.	
0690	628.6005 Turbidity Barriers	186.000 SY	.		.	
	SECTION 0001 TOTAL				.	
	TOTAL BID				.	