

Wisconsin Department of Transportation

June 4, 2015

Division of Transportation Systems Development

Bureau of Project Development
4802 Sheboygan Avenue, Rm 601
P O Box 7916
Madison, WI 53707-7916

Telephone: (608) 266-1631
Facsimile (FAX): (608) 266-8459

NOTICE TO ALL CONTRACTORS:

Proposal #06: 2984-42-70, WISC 2015 320
East Ward Street
Intersection with South Allis Street and
East Bay Street
Local Street
Milwaukee County

Letting of June 9, 2015

This is Addendum No. 01, which provides for the following:

Special Provisions

Added Special Provisions	
Article No.	Description
22	Mountable Curb and Gutter
23	Concrete Corrugated Median

Schedule of Items

Revised Bid Item Quantities					
Bid Item	Item Description	Unit	Old Quantity	Revised Quantity	Proposal Total
204.0115	Removing Asphaltic Surface Butt Joints	SY	490	1130	1130
204.0150	Removing Curb and Gutter	LF	1150	1530	1530
320.0155	Concrete Base 9-Inch	SY	410	480	480
416.0610	Drilled Tie Bars	Each	5	210	210
455.0120	Asphaltic Material PG. 64-28	Ton	18	25	25
455.0605	Tack Coat	Gal	70	100	100
460.1103	HMA Pavement Type E-3	Ton	290	410	410
601.0331	Concrete Curb and Gutter 31-Inch	LF	960	800	800
602.0410	Concrete Sidewalk 5-Inch	SF	2950	2030	2030
625.0100	Topsoil	SY	560	610	610
631.1000	Sod Lawn	SY	560	610	610

Added Bid Item Quantities					
Bid Item	Item Description	Unit	Old Quantity	Revised Quantity	Proposal Total
SPV.0090.03	Mountable Concrete Curb and Gutter	LF	0	0	240
SPV.0090.04	Concrete Corrugated Median	LF	0	0	2660

Plan Sheets

Revised Plan Sheets	
Plan Sheet	Plan Sheet Title (brief description of changes to sheet)
5,6	Typical Section: Proposed Mountable Conc. Curb and Gutter is shown
8 and 9	Curb Ramp Construction Details: Landing with new grades.
25	Plan Detail: Changes were made to show Concrete Corrugated Median and Mountable Concrete Curb and Gutter.
30	Miscellaneous Quantities
32	Plan: Changes were made to show Concrete Corrugated Median and Mountable Concrete Curb and Gutter.

Added Plan Sheets	
Plan Sheet	Plan Sheet Title (brief description of why sheet was added)
7A	Construction Detail: Mountable Conc. Curb and gutter and Concrete Corrugated Median details are added due to new design.
40A	SDD Concrete Corrugated Median

The responsibility for notifying potential subcontractors and suppliers of these changes remains with the prime contractor.

Sincerely,

Mike Coleman

Proposal Development Specialist
 Proposal Management Section

ADDENDUM NO. 01
2984-42-70
June 4, 2015

Special Provisions

22. Mountable Concrete Curb and Gutter, Item SPV.0090.03.

A. Description

This work shall consist of furnishing and placing of mountable concrete curb and gutter as shown on the plan and as hereinafter provided.

B. Material

Furnish materials conforming to requirements of Standard Specifications 601.

C. Construction

The mountable concrete curb and gutter shall conform to the details as shown on the plans.

D. Measurement

The department will measure mountable concrete curb and gutter by the linear foot acceptably completed.

E. Payment

The department will pay for measured quantities at the contract unit price under the following bid item:

ITEM NUMBER	DESCRIPTION	UNIT
SPV.0090.03	Mountable Concrete Curb and Gutter	LF

Payment is full compensation for all foundation excavation and preparation; for providing all materials, including concrete, expansion joints; for placing, finishing, protecting, and curing; for sawing joints; and for disposing of surplus excavation material, and restoring the work site.

23. Concrete Corrugated Median, Item SPV.0090.04.

A. Description

This work shall consist of furnishing and placing of concrete corrugated median as shown on the plan and as hereinafter provided.

B. Material

Furnish materials conforming to requirements of Standard Specifications 601.

C. Construction

The concrete corrugated median shall conform to the details as shown on the plans.

D. Measurement

The department will measure concrete corrugated median by the linear foot acceptably completed.

E. Payment

The department will pay for measured quantities at the contract unit price under the following bid item:

ITEM NUMBER	DESCRIPTION	UNIT
SPV.0090.04	Concrete Corrugated Median	LF

Payment is full compensation for preparing the foundation; for providing all materials, including concrete, joint filler and tie bars; for hauling, placing, consolidating, shaping, finishing, curing, and protecting the concrete; and for disposing of surplus materials.

Schedule of Items

Attached, dated June 4, 2015, are the revised Schedule of Items Pages 1 - 6.

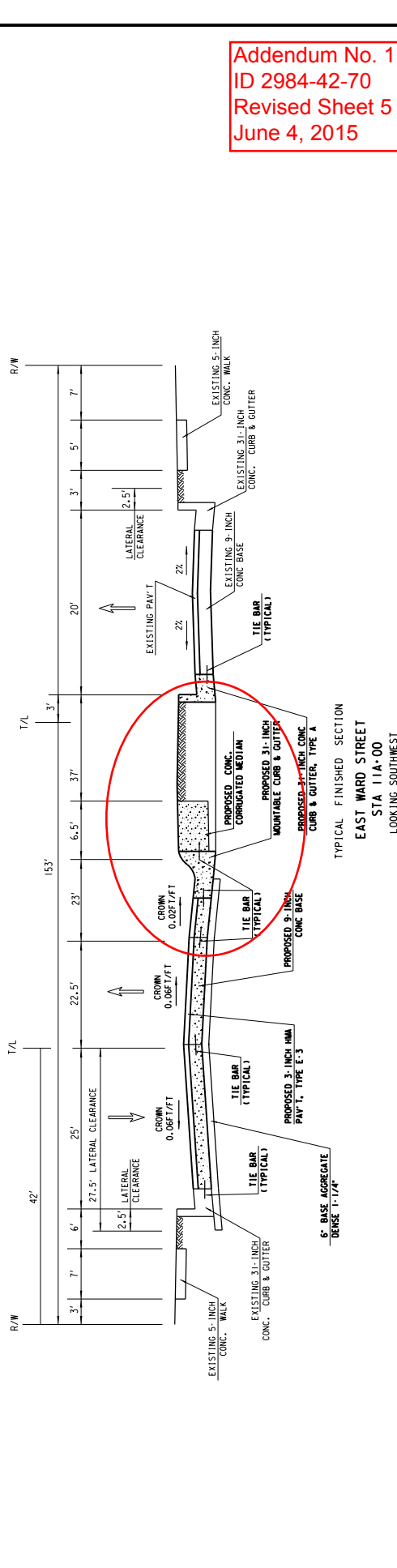
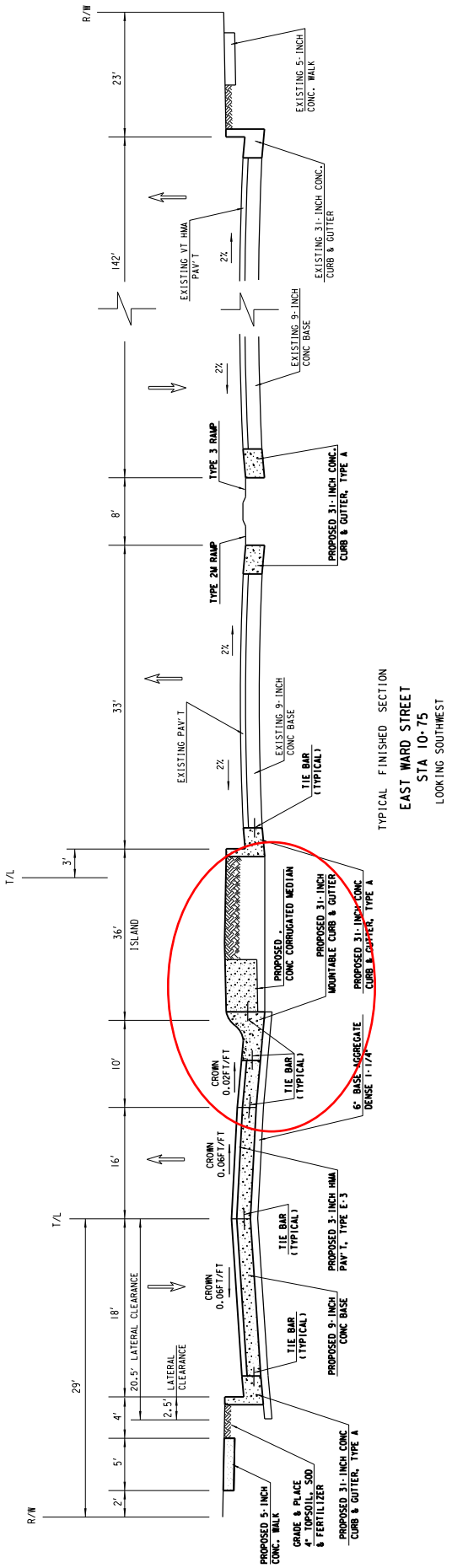
Plan Sheets

The following 8 ½ x 11-inch sheets are attached and made part of the plans for this proposal:

Revised: 5, 6, 8, 9, 25, 30, and 32.

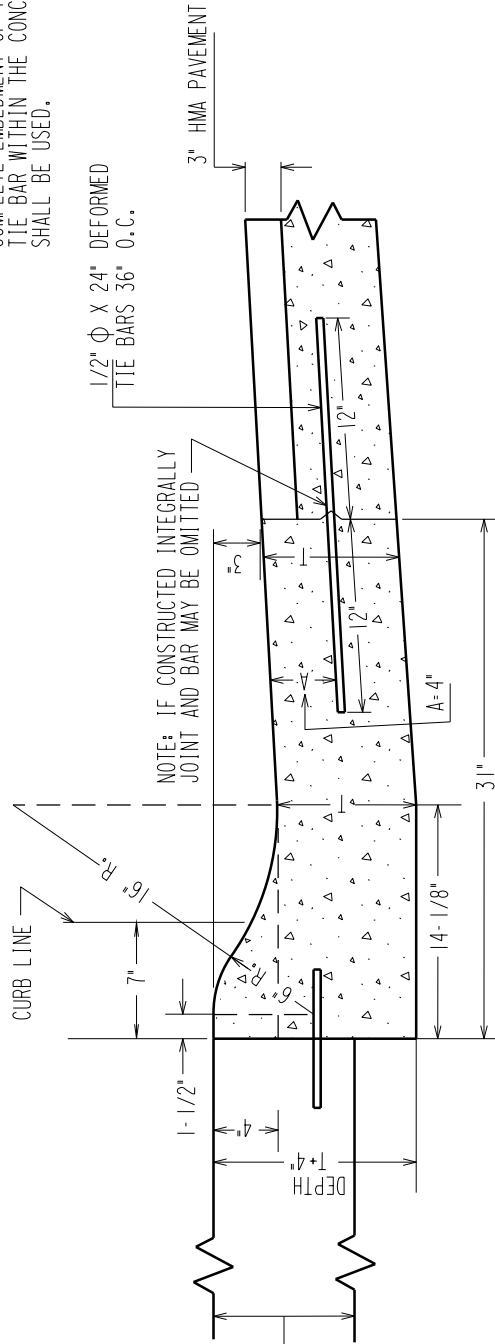
Added: 7A and 40A

END OF ADDENDUM



Addendum No. 1
ID 2984-42-70
Revised Sheet 5
June 4, 2015

NOTE: AN APPROVED METHOD FOR COMPLETE EMBEDMENT OF THE TIE BAR WITHIN THE CONCRETE SHALL BE USED.



CORRUGATION ACCORDING TO S.D.D. FOR CONCRETE CORRUGATED MEDIAN

T= SPECIFIED THICKNESS OF PAVEMENT

MOUNTABLE CONCRETE CURB AND GUTTER

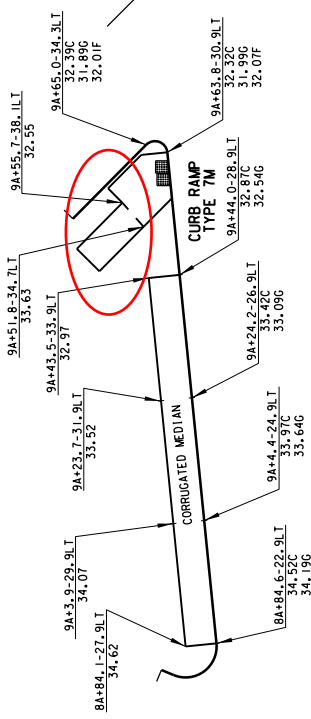
Addendum No. 1
 ID 2984-42-70
 Added Sheet 7A
 June 4, 2015

F. BRUNK'S LN.



E. WARD ST.

S. ALLIS ST.



10A

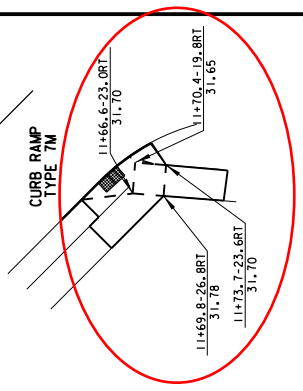
+50

9A

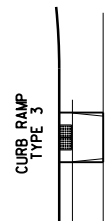
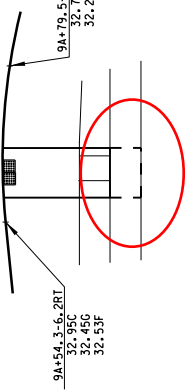
+50

8A

+50

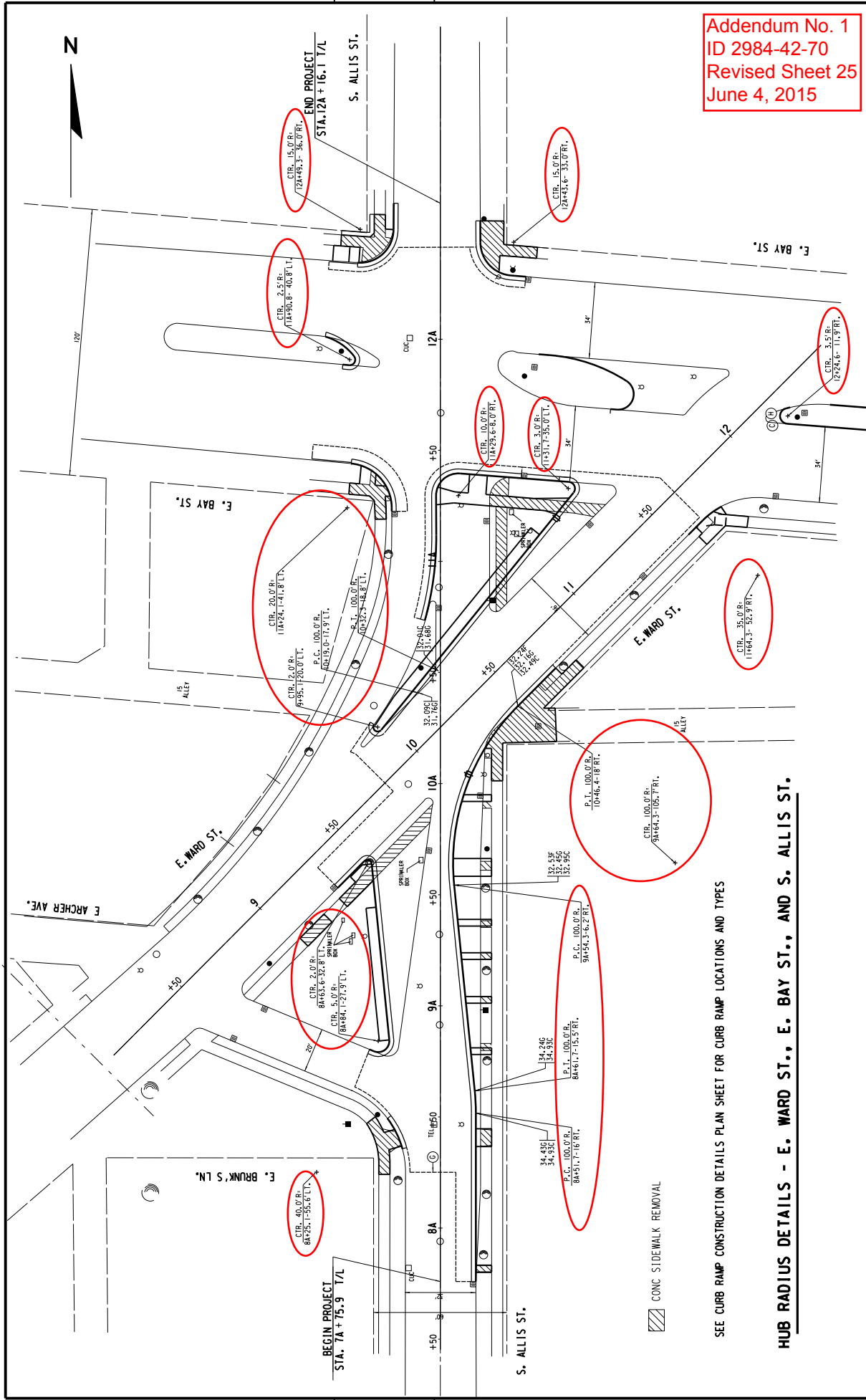


Addendum No. 1
 ID 2984-42-70
 Revised Sheet 9
 June 4, 2015



CURB RAMP DETAILS - E. WARD ST., AND S. ALLIS ST.

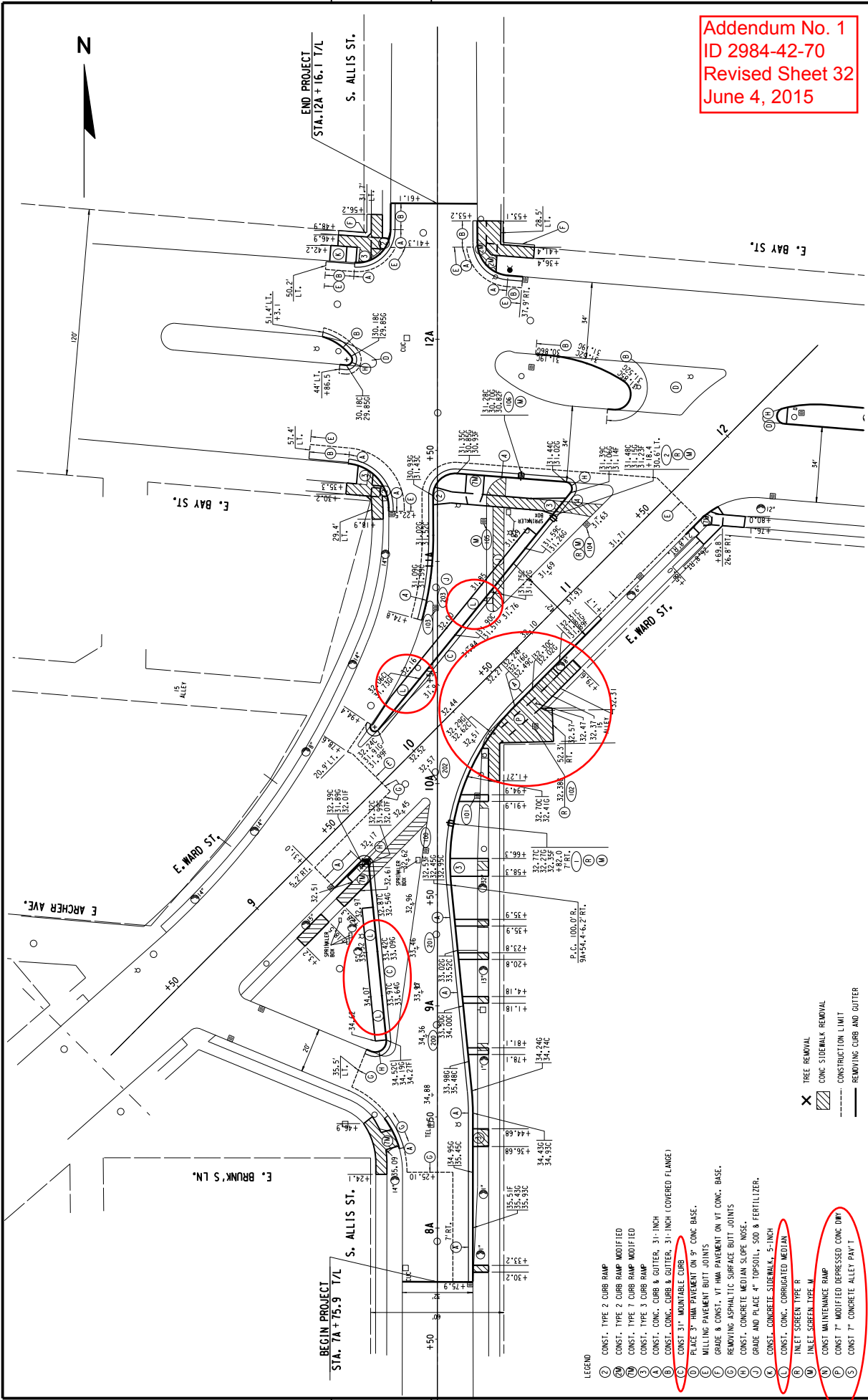
Addendum No. 1
 ID 2984-42-70
 Revised Sheet 25
 June 4, 2015



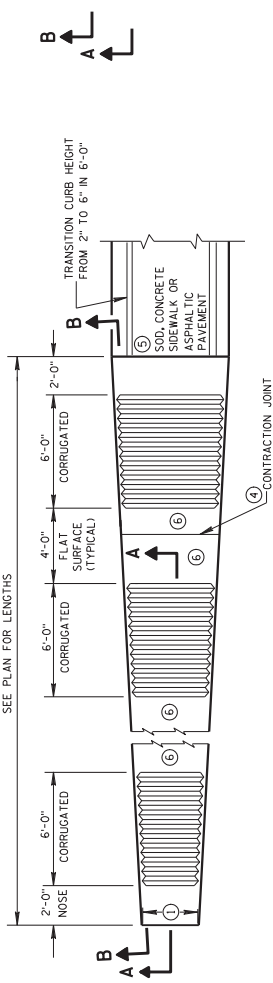
SEE CURB RAMP CONSTRUCTION DETAILS PLAN SHEET FOR CURB RAMP LOCATIONS AND TYPES

HUB RADIUS DETAILS - E. WARD ST., E. BAY ST., AND S. ALLIS ST.

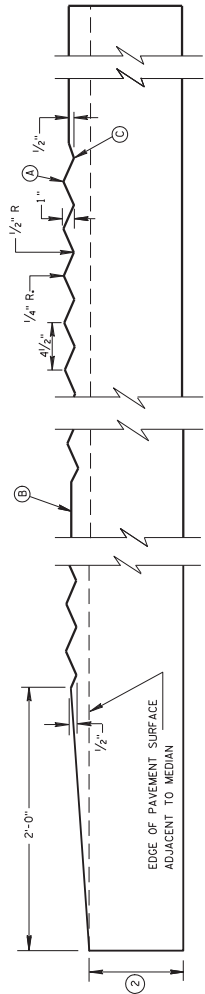
Addendum No. 1
 ID 2984-42-70
 Revised Sheet 32
 June 4, 2015



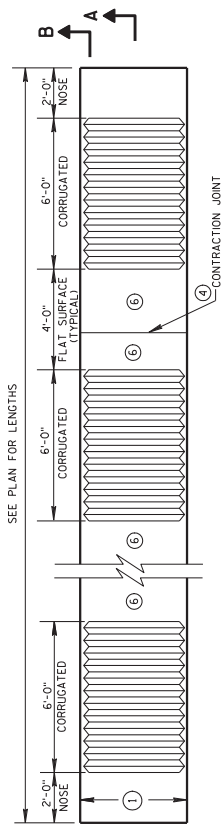
- LEGEND
- (2) CONST. TYPE 2 CURB RAMP
 - (3) CONST. TYPE 2 CURB RAMP MODIFIED
 - (4) CONST. TYPE 1 CURB RAMP MODIFIED
 - (5) CONST. TYPE 3 CURB RAMP
 - (6) CONST. CONC. CURB & GUTTER, 31" INCH
 - (7) CONST. CONC. CURB & GUTTER, 31" INCH (COVERED FLANGE)
 - (8) CONST. 31" MOUNTABLE CURB
 - (9) PLACE 3" HMA PAVEMENT ON 9" CONC. BASE.
 - (10) MILLING PAVEMENT BUTT JOINTS
 - (11) GRADE & CONST. VT HMA PAVEMENT ON VT CONC. BASE.
 - (12) REMOVING ASPHALTIC SURFACE BUTT JOINTS
 - (13) CONST. CONCRETE MEDIAN SLOPE MOSE.
 - (14) GRADE AND PLACE 4" TOPSOIL, SOD & FERTILIZER.
 - (15) CONST. CONCRETE SUBBASE, 5" INCH
 - (16) CONST. CONC. CORRUGATED MEDIAN
 - (17) INLET SCREEN TYPE R
 - (18) INLET SCREEN TYPE M
 - (19) CONST MAINTENANCE RAMP
 - (20) CONST 7" MODIFIED DEPRESSED CONC DIM
 - (21) CONST 7" CONCRETE ALLEY PAV T
- X TREE REMOVAL
 CONCRETE SIDEWALK REMOVAL
 CONSTRUCTION LIMIT
 REMOVING CURB AND GUTTER



PLAN VIEW
VARIABLE WIDTH CONCRETE CORRUGATED MEDIAN



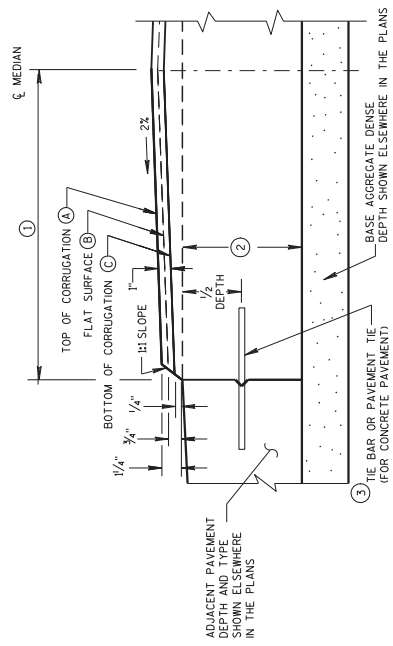
SECTION A-A
LONGITUDINAL SECTION



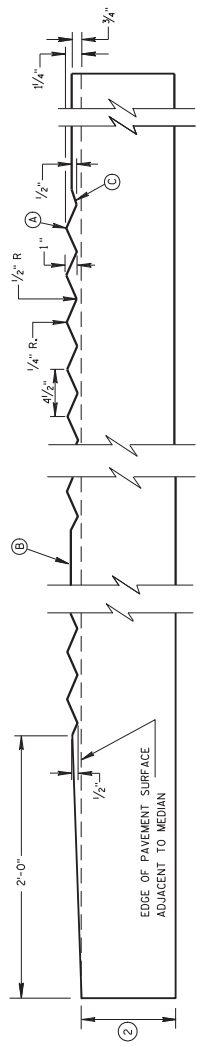
PLAN VIEW
UNIFORM WIDTH CONCRETE CORRUGATED MEDIAN

GENERAL NOTES

- 1 SEE PLANS FOR CONSTANT OR VARIABLE WIDTH.
- 2 THE DEPTH OF THE CONCRETE CORRUGATED MEDIAN SHALL BE 9-INCHES UNLESS SHOWN OTHERWISE IN THE PLAN. ADJACENT PAVEMENT STRUCTURE DETAILS ARE SHOWN IN THE PLAN. TYPICAL OPTIONS ARE:
 - (1) NEW OR EXISTING CONCRETE PAVEMENT.
 - (2) ASPHALTIC CONCRETE OVER NEW OR EXISTING CONCRETE BASE COURSE, OR PAVEMENT.
 - (3) ASPHALTIC PAVEMENT OVER BASE AGGREGATE DENSE.
- 3 TIE BARS OR PAVEMENT TIES REQUIRED IN NEW CONCRETE PAVEMENT OR CONCRETE BASE COURSE. TIE BARS SHALL BE NO. 4 X 2'-0" SPACED AT 2'-0" C-C. INSTALL TIE BARS TO MAINTAIN A MINIMUM OF 3-INCHES OF COVER BETWEEN THE TIE BAR AND THE CONCRETE SURFACE (BOTTOM AND TOP).
- 4 CONCRETE CORRUGATED MEDIAN CONTRACTION JOINTS SHALL BE CONSTRUCTED TO MATCH THE JOINTS IN ADJACENT CONCRETE PAVEMENT, WHERE ADJACENT PAVEMENT IS ASPHALT WITH BASE AGGREGATE DENSE. TRANSVERSE CONTRACTION JOINTS SHALL BE PROVIDED AT 20 FOOT INTERVALS.
- 5 SURFACE TYPE AND DETAILS ARE DEFINED ELSEWHERE IN THE PLAN.
- 6 YELLOW MARKING ON FLAT SURFACE WHEN MEDIAN SEPARATES OPPOSING TRAFFIC.



HALF CROSS SECTION
CONCRETE CORRUGATED MEDIAN AND ADJACENT PAVEMENT



SECTION B-B
LONGITUDINAL SECTION

CONCRETE CORRUGATED MEDIAN
STATE OF WISCONSIN DEPARTMENT OF TRANSPORTATION
APPROVED DATE 12/17/07 /S/ JERRY H. ZOGG ROADWAY STANDARDS DEVELOPMENT ENGINEER PHWA

Addendum No. 1
ID 2984-42-70
Added Sheet 40A
June 4, 2015

SCHEDULE OF ITEMS

REVISED:

CONTRACT:
20150609006PROJECT(S):
2984-42-70FEDERAL ID(S):
WISC 2015320

CONTRACTOR : _____

LINE NO	ITEM DESCRIPTION	APPROX. QUANTITY AND UNITS	UNIT PRICE		BID AMOUNT	
			DOLLARS	CTS	DOLLARS	CTS

SECTION 0001 Contract Items

0010	201.0120 Clearing	10.000 ID
0020	201.0220 Grubbing	10.000 ID
0030	204.0100 Removing Pavement	380.000 SY
0040	204.0105 Removing Pavement Butt Joints	850.000 SY
0050	204.0115 Removing Asphaltic Surface Butt Joints	1,130.000 SY
0060	204.0150 Removing Curb & Gutter	1,530.000 LF
0070	204.0155 Removing Concrete Sidewalk	310.000 SY
0080	204.0255 Abandoning Catch Basins	3.000 EACH
0090	205.0100 Excavation Common	249.000 CY
0100	213.0100 Finishing Roadway (project) 01. 2984-42-70	1.000 EACH

SCHEDULE OF ITEMS

REVISED:

CONTRACT:
20150609006PROJECT(S):
2984-42-70FEDERAL ID(S):
WISC 2015320

CONTRACTOR : _____

LINE NO	ITEM DESCRIPTION	APPROX. QUANTITY AND UNITS	UNIT PRICE		BID AMOUNT	
			DOLLARS	CTS	DOLLARS	CTS
0110	305.0120 Base Aggregate Dense 1 1/4-Inch	160.000 TON	.		.	
0120	320.0155 Concrete Base 9-Inch	480.000 SY	.		.	
0130	415.0310 Concrete Alley	24.000 SY	.		.	
0140	416.0170 Concrete Driveway 7-Inch	25.000 SY	.		.	
0150	416.0610 Drilled Tie Bars	210.000 EACH	.		.	
0160	455.0120 Asphaltic Material PG64-28	25.000 TON	.		.	
0170	455.0605 Tack Coat	100.000 GAL	.		.	
0180	460.1103 HMA Pavement Type E-3	410.000 TON	.		.	
0190	460.2000 Incentive Density HMA Pavement	190.000 DOL	1.00000		190.00	
0200	601.0331 Concrete Curb & Gutter 31-Inch	800.000 LF	.		.	
0210	602.0410 Concrete Sidewalk 5-Inch	2,030.000 SF	.		.	

SCHEDULE OF ITEMS

REVISED:

CONTRACT:
20150609006PROJECT(S):
2984-42-70FEDERAL ID(S):
WISC 2015320

CONTRACTOR : _____

LINE NO	ITEM DESCRIPTION	APPROX. QUANTITY AND UNITS	UNIT PRICE		BID AMOUNT	
			DOLLARS	CTS	DOLLARS	CTS
0220	602.0505 Curb Ramp Detectable Warning Field Yellow	104.000 SF	.		.	
0230	611.8105 Adjusting Catch Basin Covers	2.000 EACH	.		.	
0240	619.1000 Mobilization	1.000 EACH	.		.	
0250	620.0300 Concrete Median Sloped Nose	45.000 SF	.		.	
0260	625.0100 Topsoil	610.000 SY	.		.	
0270	628.1905 Mobilizations Erosion Control	1.000 EACH	.		.	
0280	628.1910 Mobilizations Emergency Erosion Control	1.000 EACH	.		.	
0290	629.0210 Fertilizer Type B	1.000 CWT	.		.	
0300	631.1000 Sod Lawn	610.000 SY	.		.	
0310	642.5201 Field Office Type C	1.000 EACH	.		.	
0320	643.0100 Traffic Control (project) 01. 2984-42-70	1.000 EACH	.		.	

SCHEDULE OF ITEMS

REVISED:

CONTRACT:
20150609006PROJECT(S):
2984-42-70FEDERAL ID(S):
WISC 2015320

CONTRACTOR : _____

LINE NO	ITEM DESCRIPTION	APPROX. QUANTITY AND UNITS	UNIT PRICE		BID AMOUNT	
			DOLLARS	CTS	DOLLARS	CTS
0330	643.0300 Traffic Control Drums	2,450.000 DAY
0340	643.0410 Traffic Control Barricades Type II	50.000 DAY
0350	643.0420 Traffic Control Barricades Type III	825.000 DAY
0360	643.0705 Traffic Control Warning Lights Type A	1,650.000 DAY
0370	643.0715 Traffic Control Warning Lights Type C	2,450.000 DAY
0380	643.0900 Traffic Control Signs	1,900.000 DAY
0390	649.0400 Temporary Pavement Marking Removable Tape 4-Inch	4,650.000 LF
0400	650.4000 Construction Staking Storm Sewer	4.000 EACH
0410	650.4500 Construction Staking Subgrade	300.000 LF
0420	650.5500 Construction Staking Curb Gutter and Curb & Gutter	960.000 LF

SCHEDULE OF ITEMS

REVISED:

CONTRACT:
20150609006

PROJECT(S):
2984-42-70

FEDERAL ID(S):
WISC 2015320

CONTRACTOR : _____

LINE NO	ITEM DESCRIPTION	APPROX. QUANTITY AND UNITS	UNIT PRICE		BID AMOUNT	
			DOLLARS	CTS	DOLLARS	CTS
0430	650.9910 Construction Staking Supplemental Control (project) 01. 2984-42-70	LUMP	LUMP			.
0440	690.0150 Sawing Asphalt	93.000 LF	.		.	
0450	690.0250 Sawing Concrete	430.000 LF	.		.	
0460	715.0415 Incentive Strength Concrete Pavement	24.000 DOL	1.00000		24.00	
0470	SPV.0060 Special 01. Inlet Covers Type 57	2.000 EACH	.		.	
0480	SPV.0060 Special 02. Catch Basin Type 44A	2.000 EACH	.		.	
0490	SPV.0060 Special 03. Manhole Covers Type 58A	6.000 EACH	.		.	
0500	SPV.0060 Special 04. Inlet Screen Type M	5.000 EACH	.		.	
0510	SPV.0060 Special 05. Inlet Screen Type R	4.000 EACH	.		.	
0520	SPV.0090 Special 01. Construction Staking Concrete Sidewalk	370.000 LF	.		.	

SCHEDULE OF ITEMS

REVISED:

CONTRACT:
20150609006

PROJECT(S):
2984-42-70

FEDERAL ID(S):
WISC 2015320

CONTRACTOR : _____

LINE NO	ITEM DESCRIPTION	APPROX. QUANTITY AND UNITS	UNIT PRICE		BID AMOUNT	
			DOLLARS	CTS	DOLLARS	CTS
0530	SPV.0090 Special 02. Storm Sewer Pipe Corrugated PVC 12-Inch	34.000 LF	.		.	
0540	SPV.0090 Special 03. Mountable Concrete Curb and Gutter	240.000 LF	.		.	
0550	SPV.0090 Special 04. Concrete Corrugated Median	2,660.000 LF	.		.	
	SECTION 0001 TOTAL				.	
	TOTAL BID				.	