



Wisconsin Department of Transportation

August 27, 2015

Division of Transportation Systems Development

Bureau of Project Development
 4802 Sheboygan Avenue, Rm 601
 P O Box 7916
 Madison, WI 53707-7916

Telephone: (608) 266-1631
 Facsimile (FAX): (608) 266-8459

NOTICE TO ALL CONTRACTORS:

Proposal #02: 1060-44-70, WISC 2015 484
East West Freeway
CTH P to CTH F
IH 94
Waukesha County

Letting of September 15, 2015

This is Addendum No. 2, which provides for the following:

Special Provisions

Added Special Provisions	
Article No.	Description
80	Pavement Marking Contrast Grooved Preformed Thermoplastic Arrows Type 1, Item SPV.0060.0004; Arrows Type 2, Item SPV.0060.0005; Arrows Type 3, Item SPV.0060.0006; Arrows Type 5, Item SPV.0060.0007; Words, Item SPV.0060.0008; Stop Line 18-Inch, Item SPV.0090.0004.

Schedule of Items

Added Bid Item Quantities					
Bid Item	Item Description	Unit	Old Quantity	Revised Quantity	Proposal Total
SPV.0060.0004	Pavement Marking Contrast Grooved Preformed Thermoplastic Arrows Type 1, Item SPV.0060.0004	Each	0	4	4
SPV.0060.0005	Pavement Marking Contrast Grooved Preformed Thermoplastic Arrows Type 2, Item SPV.0060.0005	Each	0	14	14
SPV.0060.0006	Pavement Marking Contrast Grooved Preformed Thermoplastic Arrows Type 3, Item SPV.0060.0006	Each	0	1	1
SPV.0060.0007	Pavement Marking Contrast Grooved Preformed Thermoplastic Arrows Type 5, Item SPV.0060.0007	Each	0	2	2
SPV.0060.0008	Pavement Marking Contrast Grooved Preformed Thermoplastic Words, Item SPV.0060.0008	Each	0	17	17

SPV.0090.0004	Pavement Marking Contrast Grooved Preformed Thermoplastic Stop Line 18-Inch, Item SPV.0090.0004	LF	0	257	257
---------------	---	----	---	-----	-----

Deleted Bid Item Quantities					
Bid Item	Item Description	Unit	Old Quantity	Revised Quantity	Proposal Total
647.0158	Pavement Marking Arrows Preformed Thermoplastic Type 1	Each	4	0	0
647.0168	Pavement Marking Arrows Preformed Thermoplastic Type 2	Each	14	0	0
647.0178	Pavement Marking Arrows Preformed Thermoplastic Type 3	Each	1	0	0
647.0198	Pavement Marking Arrows Preformed Thermoplastic Type 5	Each	2	0	0
647.0358	Pavement Marking Words Preformed Thermoplastic	Each	17	0	0
647.0568	Pavement Marking Stop Line Preformed Thermoplastic 18-Inch	LF	257	0	0

Plan Sheets

Revised Plan Sheets	
Plan Sheet	Plan Sheet Title (brief description of changes to sheet)
216	Revised bid item Pavement Marking Preformed Thermoplastic to Pavement Marking Contrast Grooved Preformed Thermoplastic
252	Revised bid items Pavement Marking Preformed Thermoplastic to Pavement Marking Contrast Grooved Preformed Thermoplastic
253	Revised bid items Pavement Marking Preformed Thermoplastic to Pavement Marking Contrast Grooved Preformed Thermoplastic
254	Revised bid items Pavement Marking Preformed Thermoplastic to Pavement Marking Contrast Grooved Preformed Thermoplastic
255	Revised bid items Pavement Marking Preformed Thermoplastic to Pavement Marking Contrast Grooved Preformed Thermoplastic
441	Revised bid items Pavement Marking Preformed Thermoplastic to Pavement Marking Contrast Grooved Preformed Thermoplastic

The responsibility for notifying potential subcontractors and suppliers of these changes remains with the prime contractor.

Sincerely,

Mike Coleman

Proposal Development Specialist
Proposal Management Section

ADDENDUM NO. 2

1060-44-70

August 27, 2015

Special Provisions

80. **Pavement Marking Contrast Grooved Preformed Thermoplastic Arrows Type 1, Item SPV.0060.0004; Arrows Type 2, Item SPV.0060.0005; Arrows Type 3, Item SPV.0060.0006; Arrows Type 5, Item SPV.0060.0007; Words, Item SPV.0060.0008; Stop Line 18-Inch, Item SPV.0090.0004.**

A Description

This special provision describes grooving the pavement surface, and furnishing and installing contrast preformed thermoplastic pavement marking as shown on the plans, in accordance with section 647 of the standards specifications, and as hereinafter provided.

B Materials

Furnish 125 mils preformed thermoplastic pavement marking from the department's approved products list. If required, furnish sealant material recommended by the manufacturer.

C Construction

C.1 General

For quality assurance, provide the project engineer and the region's Marking Section evidence of manufacturer training in the proper placement and installation of preformed thermoplastic pavement marking.

Plane the grooved lines in accordance with the plan details. Use grooving equipment with a free-floating, independent cutting or grinding head. Plane a minimum number of passes to create a smooth groove.

C.2 Groove Depth

Cut the groove to a depth of 120 mils \pm 10 mils deep from the pavement surface or, if tined, from the high point of the tined surface. Measure depth using a straightedge placed perpendicular to the groove. The department may periodically check groove depths.

C.3 Groove Width – Linear Markings

Cut the groove 1-inch wider than the width of the thermoplastic.

C.4 Groove Position

Position the groove edge in accordance with the plan details.

C.4.1 Linear Marking

Groove at a minimum of 4-inches, but not greater than, 12-inches from both ends of the line segment. Achieve straight alignment with the grooving equipment.

C.4.2 Special Marking

Groove at a minimum of 4-inches from the perimeter of the special marking. Groove separate areas for Word Items.

C.5 Groove Cleaning

C.5.1 Concrete

Cooling the cutting head with water may be necessary for some applications and equipment. If cooling water is necessary, flush the groove immediately with water after cutting to remove any build-up of cement dust and water slurry. If this is not done, the slurry may harden in the groove.

If water is used in the grooving process, allow the groove to dry a minimum of 24 hours after groove cleaning, after removal of excess water, and prior to pavement marking application. Clean and dry the groove for proper application of the sealant, and placement of the pavement marking. Use a high-pressure air blower with at least 185 ft³/min air flow and 90 psi air pressure to clean the groove; use of the air blower does not decrease the amount of time required for the groove to dry.

C.5.2 Asphalt

Use a high-pressure air blower with at least 185 ft³/min air flow and 90 psi air pressure to clean the groove.

Check for structural integrity in supporting grooving operations. If the structural integrity of the asphalt pavement is inadequate to support grooving operations, immediately notify the engineer.

C.6 Preformed Thermoplastic Application

Preheat the surface if necessary based on manufacturer's recommendation.

Apply preformed thermoplastic in the groove as per manufacturer's recommendations. If manufacturer's recommendations require a sealant, apply a sealant lower than 91g/l VOC during the following period of time due to Volatile Organic Compound Limitations:

May 1 to September 30, both dates inclusive – the Southeast Region and the ozone non-attainment Northeast Region counties of Sheboygan, Manitowoc, and Kewaunee.

Use any sealant in the remainder counties and for the remainder of the year. The sealant must be wet.

D Measurement

The department will measure Pavement Marking Contrast Grooved Preformed Thermoplastic by the unit, acceptably placed, or in length by the linear foot of tape placed in accordance with the contract and accepted.

E Payment

The department will pay for measured quantities at the contract unit price under the following bid items:

ITEM NUMBER	DESCRIPTION	UNIT
SPV.0060.0004	Pavement Marking Contrast Grooved Preformed Thermoplastic Arrows Type 1	Each
SPV.0060.0005	Pavement Marking Contrast Grooved Preformed Thermoplastic Arrows Type 2	Each
SPV.0060.0006	Pavement Marking Contrast Grooved Preformed Thermoplastic Arrows Type 3	Each
SPV.0060.0007	Pavement Marking Contrast Grooved Preformed Thermoplastic Arrows Type 5	Each
SPV.0060.0008	Pavement Marking Contrast Grooved Preformed Thermoplastic Words	Each
SPV.0090.0004	Pavement Marking Contrast Grooved Preformed Thermoplastic Stop Line 18-Inch	LF

Payment is full compensation for cleaning and preparing the pavement surface, furnishing and installing the material; and for furnishing all labor, tools, equipment, and incidentals necessary to complete the contract work.

Schedule of Items

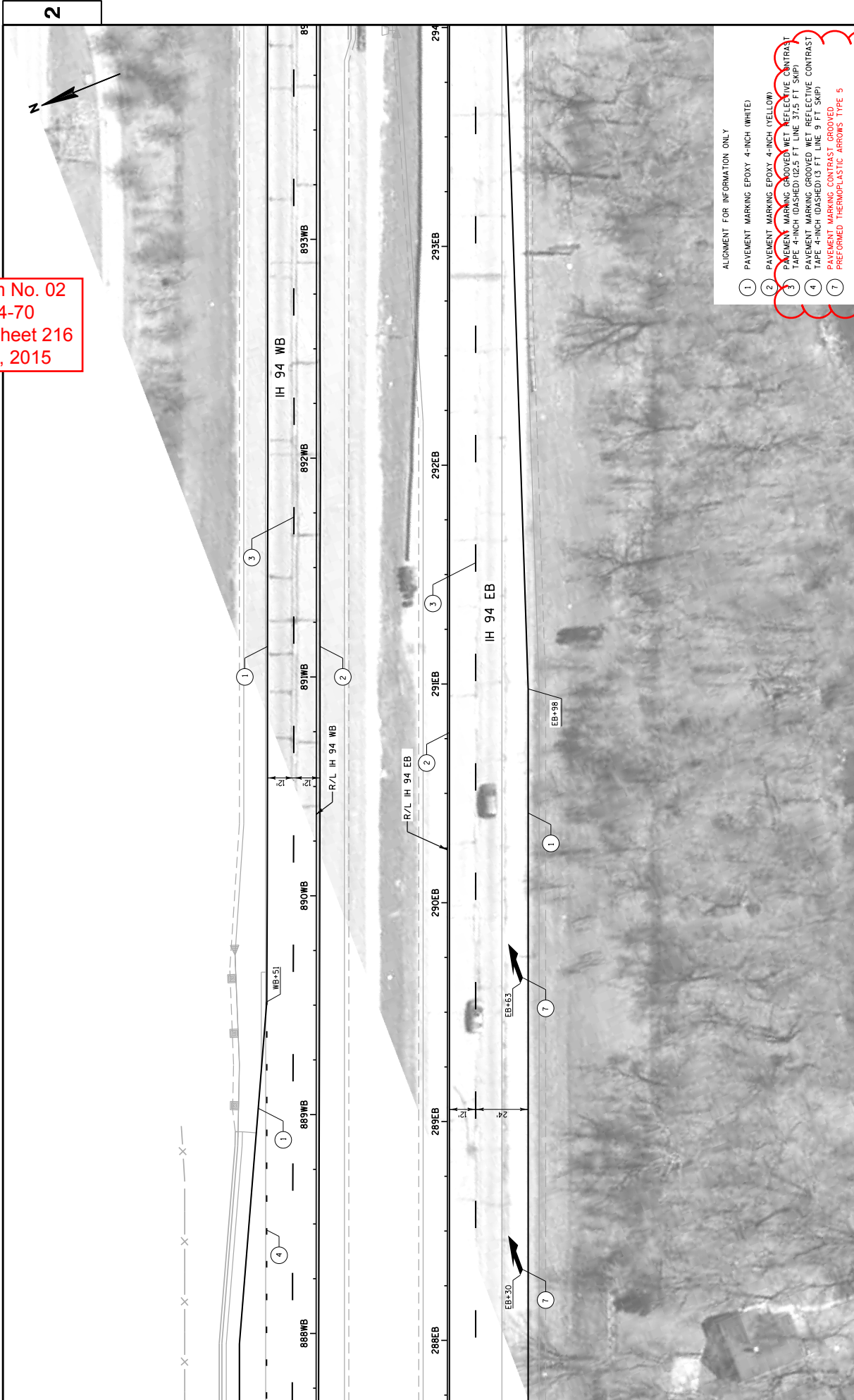
Attached, dated August 27, 2015, are the revised Schedule of Items Pages 1 – 24.

Plan Sheets

The following 8½ x 11-inch sheets are attached and made part of the plans for this proposal:
Revised: 216, 252 - 255, and 441

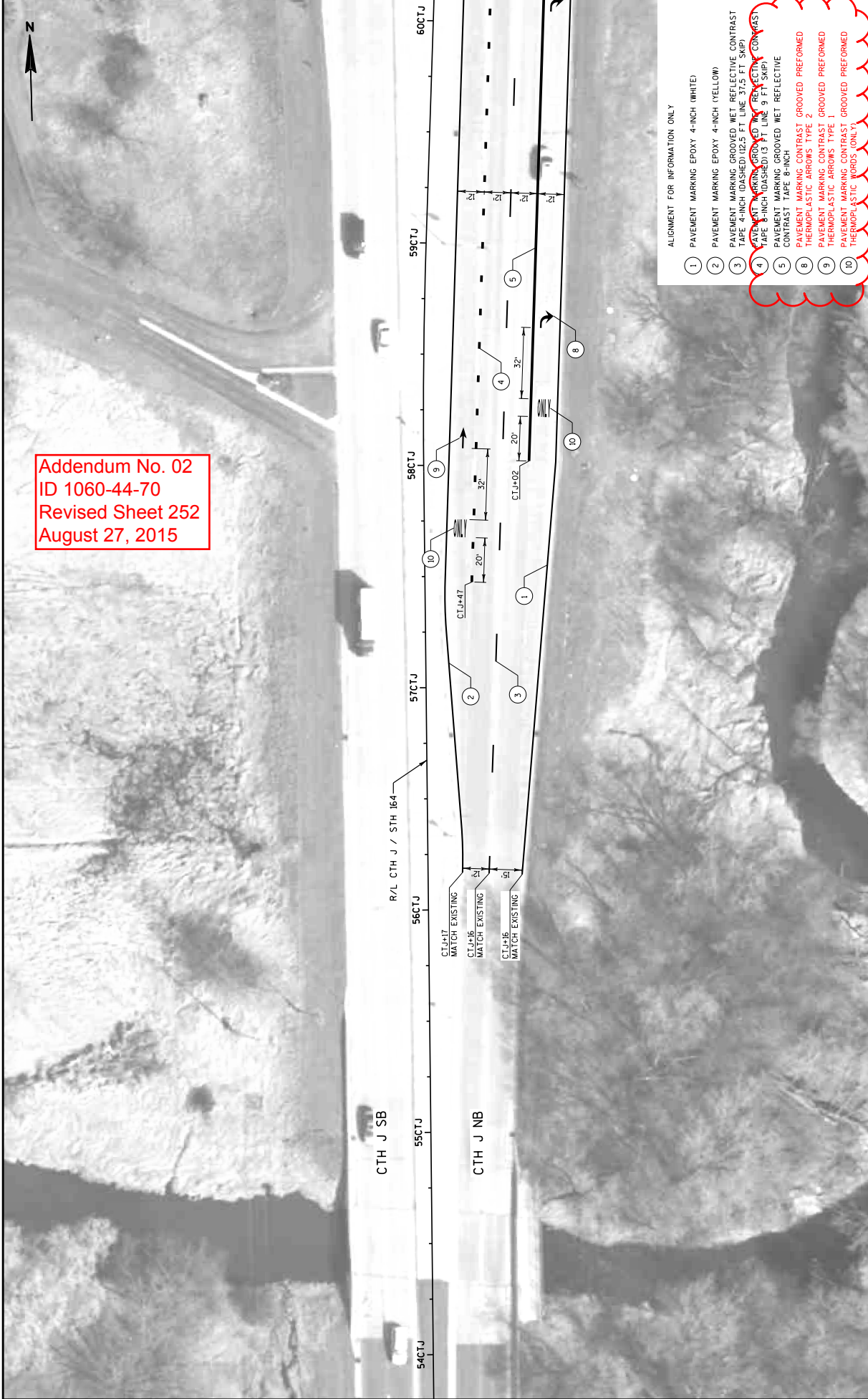
END OF ADDENDUM

Addendum No. 02
 ID 1060-44-70
 Revised Sheet 216
 August 27, 2015

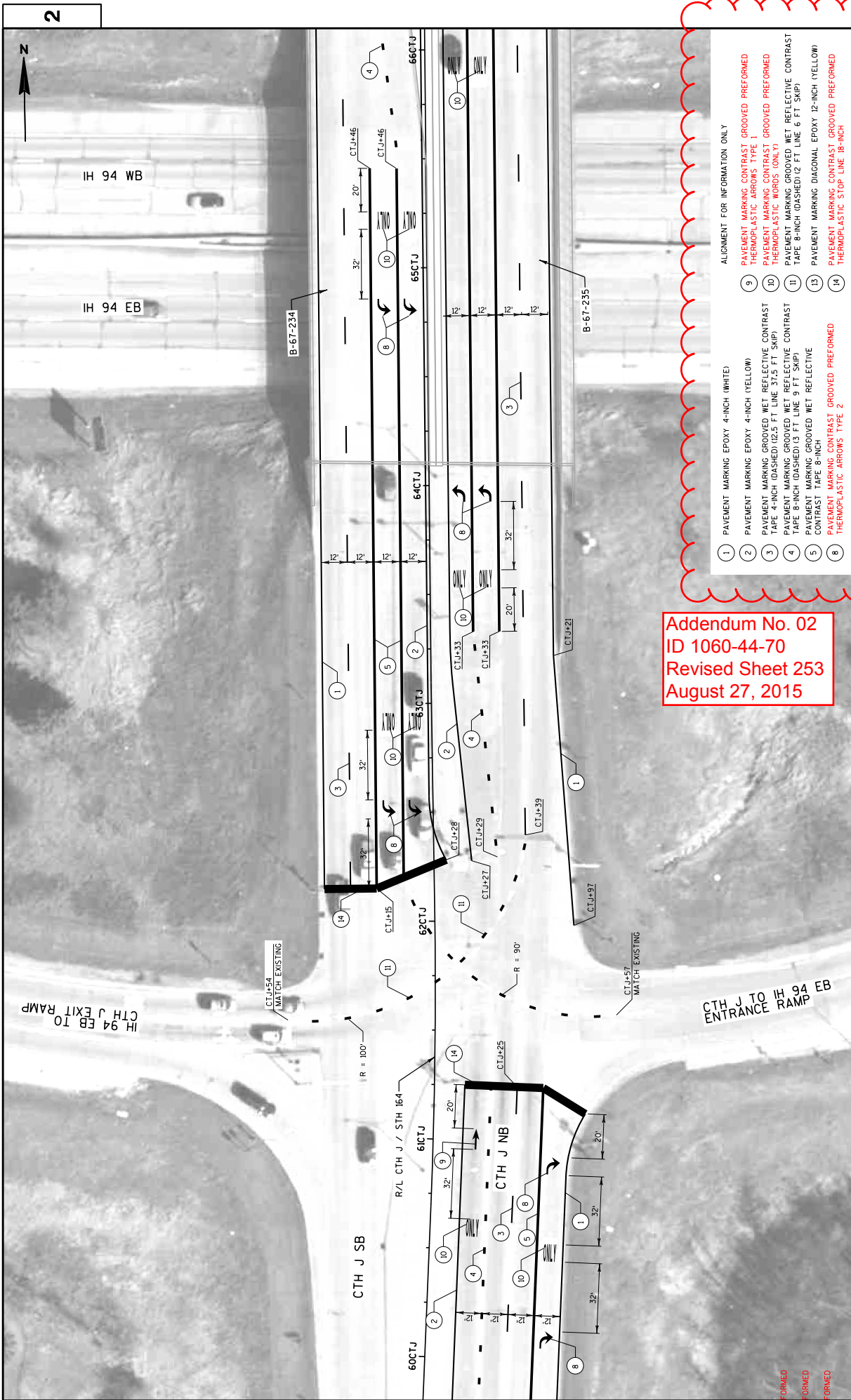


- ALIGNMENT FOR INFORMATION ONLY
- ① PAVEMENT MARKING EPOXY 4-INCH (WHITE)
 - ② PAVEMENT MARKING EPOXY 4-INCH (YELLOW)
 - ③ PAVEMENT MARKING GROOVED WET REFLECTIVE CONTRAST TAPE 4-INCH (DASHED) (0.25 FT LINE 37.5 FT SKIP)
 - ④ PAVEMENT MARKING GROOVED WET REFLECTIVE CONTRAST TAPE 4-INCH (DASHED) (3 FT LINE 9 FT SKIP)
 - ⑤ PAVEMENT MARKING CONTRAST GROOVED PREFORMED THERMOPLASTIC ARROWS TYPE 5

Addendum No. 02
ID 1060-44-70
Revised Sheet 252
August 27, 2015

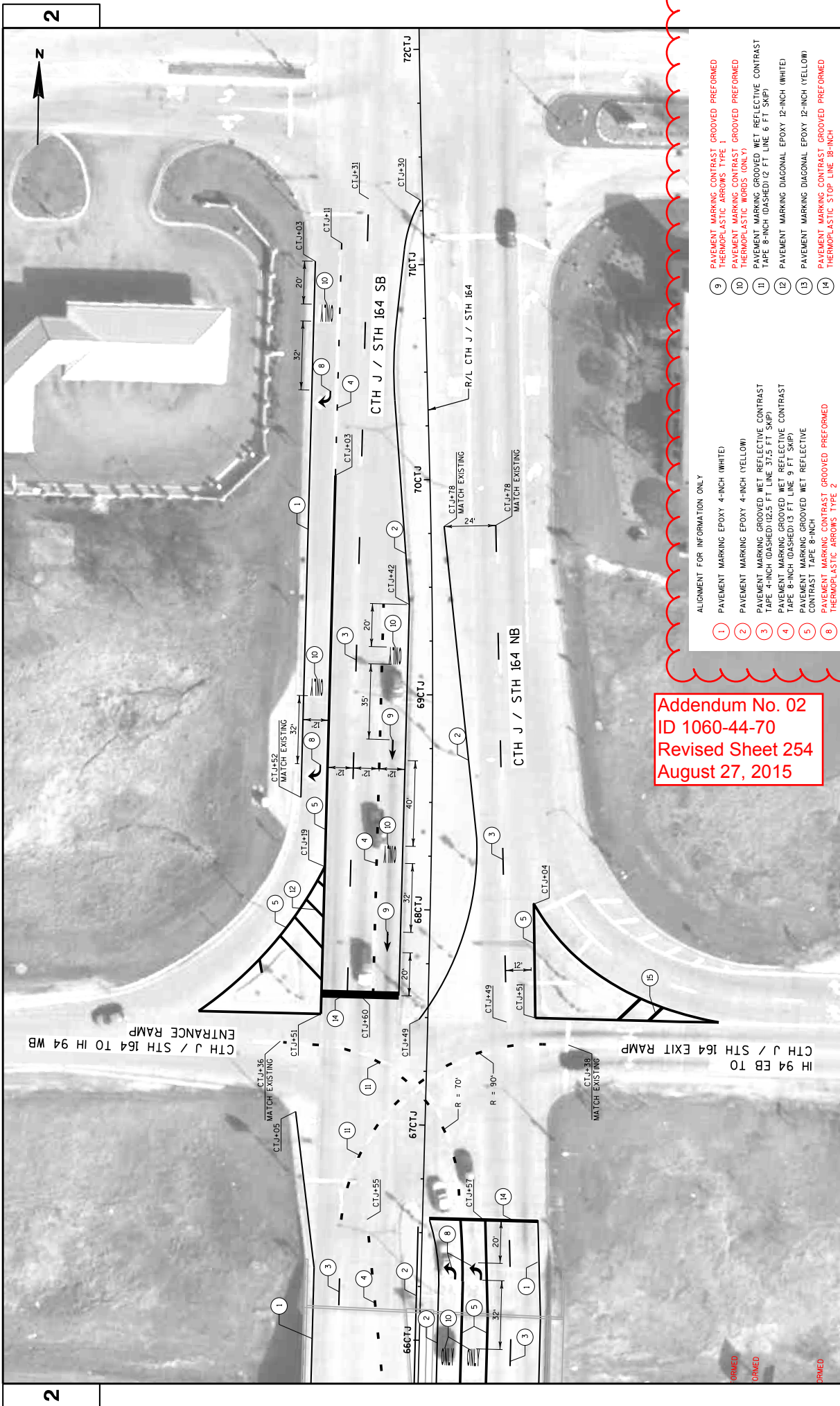


- ALIGNMENT FOR INFORMATION ONLY
- 1 PAVEMENT MARKING EPOXY 4-INCH (WHITE)
 - 2 PAVEMENT MARKING EPOXY 4-INCH (YELLOW)
 - 3 PAVEMENT MARKING GROOVED WET REFLECTIVE CONTRAST TAPE 4-INCH (DASHED) 102.5 FT LINE 37.5 FT SKIP
 - 4 PAVEMENT MARKING GROOVED WET REFLECTIVE CONTRAST TAPE 8-INCH (DASHED) 13 FT LINE 9 FT SKIP
 - 5 PAVEMENT MARKING GROOVED WET REFLECTIVE CONTRAST TAPE 8-INCH
 - 6 PAVEMENT MARKING CONTRAST GROOVED PREFORMED THERMOPLASTIC ARROWS TYPE 2
 - 7 PAVEMENT MARKING CONTRAST GROOVED PREFORMED THERMOPLASTIC ARROWS TYPE 1
 - 8 PAVEMENT MARKING CONTRAST GROOVED PREFORMED THERMOPLASTIC WORDS (ONLY)



- ALIGNMENT FOR INFORMATION ONLY
- ① PAVEMENT MARKING EPOXY 4-INCH (WHITE)
 - ② PAVEMENT MARKING EPOXY 4-INCH (YELLOW)
 - ③ PAVEMENT MARKING GROOVED MET REFLECTIVE CONTRAST TAPE 4-INCH (DASHED) (2.5 FT LINE 37.5 FT SWP)
 - ④ PAVEMENT MARKING GROOVED MET REFLECTIVE CONTRAST TAPE 8-INCH (DASHED) (3 FT LINE 9 FT SWP)
 - ⑤ PAVEMENT MARKING GROOVED MET REFLECTIVE CONTRAST TAPE 8-INCH (DASHED) (2 FT LINE 6 FT SWP)
 - ⑥ PAVEMENT MARKING DIAGONAL EPOXY 12-INCH (YELLOW)
 - ⑦ THERMOPLASTIC STOP LINE 18-INCH
 - ⑧ PAVEMENT MARKING CONTRAST GROOVED PREFERRED
 - ⑨ THERMOPLASTIC ARROWS TYPE 1
 - ⑩ PAVEMENT MARKING CONTRAST GROOVED PREFERRED
 - ⑪ PAVEMENT MARKING CONTRAST GROOVED PREFERRED
 - ⑫ PAVEMENT MARKING CONTRAST GROOVED PREFERRED
 - ⑬ PAVEMENT MARKING CONTRAST GROOVED PREFERRED
 - ⑭ THERMOPLASTIC ARROWS TYPE 2

Addendum No. 02
 ID 1060-44-70
 Revised Sheet 253
 August 27, 2015



Addendum No. 02
 ID 1060-44-70
 Revised Sheet 254
 August 27, 2015

- ALIGNMENT FOR INFORMATION ONLY
- 1 PAVEMENT MARKING EPOXY 4-INCH (WHITE)
 - 2 PAVEMENT MARKING EPOXY 4-INCH (YELLOW)
 - 3 PAVEMENT MARKING GROOVED WET REFLECTIVE CONTRAST TAPE 4-INCH (DASHED) (2.5 FT LINE 37.5 FT SKIP)
 - 4 PAVEMENT MARKING GROOVED WET REFLECTIVE CONTRAST TAPE 8-INCH (DASHED) (3 FT LINE 9 FT SKIP)
 - 5 PAVEMENT MARKING GROOVED WET REFLECTIVE CONTRAST TAPE 8-INCH
 - 8 PAVEMENT MARKING CONTRAST GROOVED PAVEMENT THERMOPLASTIC ARROWS TYPE 2
 - 9 PAVEMENT MARKING CONTRAST GROOVED PAVEMENT THERMOPLASTIC ARROWS TYPE 1
 - 10 PAVEMENT MARKING CONTRAST GROOVED PAVEMENT THERMOPLASTIC WORDS (ONE FT)
 - 11 PAVEMENT MARKING GROOVED WET REFLECTIVE CONTRAST TAPE 8-INCH (DASHED) (2 FT LINE 6 FT SKIP)
 - 12 PAVEMENT MARKING DIAGONAL EPOXY 12-INCH (WHITE)
 - 13 PAVEMENT MARKING DIAGONAL EPOXY 12-INCH (YELLOW)
 - 14 PAVEMENT MARKING CONTRAST GROOVED PAVEMENT THERMOPLASTIC STOP LINE 18-INCH

PROJECT NO: 1060-44-70	COUNTY: WAUKESHA	HWY: IH 94	SHEET 254
PAVEMENT MARKINGS			
FILE NAME : \\m11400\prog\proj\58899\1\cads\024543.dwg PLOT DATE : 8/26/2015 9:59:00 AM PLOT BY : rfe11111 PLOT NAME : PLOT SCALE : 49:1			
			WSDOT/CADS SHEET 42

Addendum No. 02
 ID 1060-44-70
 Revised Sheet 255
 August 27, 2015



2

2



- ALIGNMENT FOR INFORMATION ONLY
- ③ PAVEMENT MARKING GROOVED WET REFLECTIVE CONTRAST TAPE 4-INCH (DASHED) 102.5 FT LINE 37.5 FT SKIP
 - ⑤ PAVEMENT MARKING GROOVED WET REFLECTIVE CONTRAST TAPE 8-INCH
 - ⑧ PAVEMENT MARKING CONTRAST GROOVED PREFORMED THERMOPLASTIC ARROWS TYPE 2
 - ⑩ PAVEMENT MARKING CONTRAST GROOVED PREFORMED THERMOPLASTIC WORDS (ONLY)
 - ⑭ PAVEMENT MARKING CONTRAST GROOVED PREFORMED THERMOPLASTIC STOP LINE 18-INCH
 - ⑮ PAVEMENT MARKING CONTRAST GROOVED PREFORMED THERMOPLASTIC ARROWS TYPE 3

SCHEDULE OF ITEMS

REVISED:

CONTRACT:
20150915002PROJECT(S):
1060-44-70FEDERAL ID(S):
WISC 2015484

CONTRACTOR : _____

LINE NO	ITEM DESCRIPTION	APPROX. QUANTITY AND UNITS	UNIT PRICE		BID AMOUNT	
			DOLLARS	CTS	DOLLARS	CTS

SECTION 0001 Roadway Items

0010	108.4400 CPM Progress Schedule	1.000 EACH
0020	201.0110 Clearing	1,662.000 SY
0030	201.0210 Grubbing	1,314.000 SY
0040	203.0100 Removing Small Pipe Culverts	3.000 EACH
0050	203.0200 Removing Old Structure (station) 0001. 65+12	LUMP	LUMP	.	.	.
0060	203.0225.S Debris Containment (structure) 0001. B-67-62	LUMP	LUMP	.	.	.
0070	203.0225.S Debris Containment (structure) 0002. B-67-63	LUMP	LUMP	.	.	.
0080	203.0225.S Debris Containment (structure) 0003. B-67-234	LUMP	LUMP	.	.	.
0090	203.0225.S Debris Containment (structure) 0004. B-67-235	LUMP	LUMP	.	.	.

SCHEDULE OF ITEMS

REVISED:

CONTRACT:
20150915002PROJECT(S):
1060-44-70FEDERAL ID(S):
WISC 2015484

CONTRACTOR : _____

LINE NO	ITEM DESCRIPTION	APPROX. QUANTITY AND UNITS	UNIT PRICE		BID AMOUNT	
			DOLLARS	CTS	DOLLARS	CTS
0100	203.0700.S Removing Old Structure Over Waterway With Debris Capture System (station) 0003. 301+00	LUMP	LUMP			.
0110	204.0100 Removing Pavement	2,441.000 SY	.		.	
0120	204.0115 Removing Asphaltic Surface Butt Joints	9,422.000 SY	.		.	
0130	204.0125 Removing Asphaltic Surface Milling	2,779.000 TON	.		.	
0140	204.0150 Removing Curb & Gutter	172.000 LF	.		.	
0150	204.0155 Removing Concrete Sidewalk	79.000 SY	.		.	
0160	204.0165 Removing Guardrail	2,880.000 LF	.		.	
0170	204.0175 Removing Concrete Slope Paving	4.000 SY	.		.	
0180	204.0195 Removing Concrete Bases	2.000 EACH	.		.	
0190	204.0220 Removing Inlets	2.000 EACH	.		.	

SCHEDULE OF ITEMS

REVISED:

CONTRACT:
20150915002PROJECT(S):
1060-44-70FEDERAL ID(S):
WISC 2015484

CONTRACTOR : _____

LINE NO	ITEM DESCRIPTION	APPROX. QUANTITY AND UNITS	UNIT PRICE		BID AMOUNT	
			DOLLARS	CTS	DOLLARS	CTS
0200	205.0100 Excavation Common ***	27,251.000 CY
0210	208.0100 Borrow ***	639.000 CY
0220	213.0100 Finishing Roadway (project) 0001. 1060-44-70	1.000 EACH
0230	305.0110 Base Aggregate Dense 3/4-Inch	1,914.000 TON
0240	305.0120 Base Aggregate Dense 1 1/4-Inch	34,434.000 TON
0250	305.0500 Shaping Shoulders	131.000 STA
0260	311.0110 Breaker Run	8,429.000 TON
0270	312.0110 Select Crushed Material	6,603.000 TON
0280	415.0090 Concrete Pavement 9-Inch	1,320.000 SY
0290	415.0410 Concrete Pavement Approach Slab	1,165.000 SY
0300	416.0610 Drilled Tie Bars	38.000 EACH

SCHEDULE OF ITEMS

REVISED:

CONTRACT:
20150915002PROJECT(S):
1060-44-70FEDERAL ID(S):
WISC 2015484

CONTRACTOR : _____

LINE NO	ITEM DESCRIPTION	APPROX. QUANTITY AND UNITS	UNIT PRICE		BID AMOUNT	
			DOLLARS	CTS	DOLLARS	CTS
0310	416.0620 Drilled Dowel Bars	32.000 EACH	.		.	
0320	455.0120 Asphaltic Material PG64-28	471.000 TON	.		.	
0330	455.0605 Tack Coat	2,699.000 GAL	.		.	
0340	460.1110 HMA Pavement Type E-10	7,116.000 TON	.		.	
0350	460.2000 Incentive Density HMA Pavement	4,600.000 DOL	1.00000		4600.00	
0360	465.0125 Asphaltic Surface Temporary	4,982.000 TON	.		.	
0370	465.0400 Asphaltic Shoulder Rumble Strips	41,734.000 LF	.		.	
0380	502.0100 Concrete Masonry Bridges	4.000 CY	.		.	
0390	502.3100 Expansion Device (structure) 0001. B-67-62	LUMP	LUMP		.	
0400	502.3100 Expansion Device (structure) 0002. B-67-63	LUMP	LUMP		.	
0410	502.3100 Expansion Device (structure) 0003. B-67-69	LUMP	LUMP		.	

SCHEDULE OF ITEMS

REVISED:

CONTRACT:
20150915002PROJECT(S):
1060-44-70FEDERAL ID(S):
WISC 2015484

CONTRACTOR : _____

LINE NO	ITEM DESCRIPTION	APPROX. QUANTITY AND UNITS	UNIT PRICE		BID AMOUNT	
			DOLLARS	CTS	DOLLARS	CTS
0420	502.3100 Expansion Device (structure) 0004. B-67-234	LUMP	LUMP			.
0430	502.3100 Expansion Device (structure) 0005. B-67-235	LUMP	LUMP			.
0440	502.3200 Protective Surface Treatment	17,211.000 SY		.		.
0450	502.3215.S Protective Surface Treatment Reseal	2,382.000 SY		.		.
0460	502.5002 Masonry Anchors Type L No. 4 Bars	133.000 EACH		.		.
0470	502.5005 Masonry Anchors Type L No. 5 Bars	543.000 EACH		.		.
0480	505.0605 Bar Steel Reinforcement HS Coated Bridges	25,670.000 LB		.		.
0490	505.0904 Bar Couplers No. 4	22.000 EACH		.		.
0500	505.0905 Bar Couplers No. 5	26.000 EACH		.		.
0510	505.0906 Bar Couplers No. 6	115.000 EACH		.		.
0520	506.2610 Bearing Pads Elastomeric Laminated	52.000 EACH		.		.

SCHEDULE OF ITEMS

REVISED:

CONTRACT:
20150915002PROJECT(S):
1060-44-70FEDERAL ID(S):
WISC 2015484

CONTRACTOR : _____

LINE NO	ITEM DESCRIPTION	APPROX. QUANTITY AND UNITS	UNIT PRICE		BID AMOUNT	
			DOLLARS	CTS	DOLLARS	CTS
0530	506.7050.S Removing Bearings (structure) 0001. B-67-0014	36.000 EACH	.		.	
0540	506.7050.S Removing Bearings (structure) 0002. B-67-140	16.000 EACH	.		.	
0550	509.0301 Preparation Decks Type 1	43.000 SY	.		.	
0560	509.0302 Preparation Decks Type 2	16.000 SY	.		.	
0570	509.0500 Cleaning Decks	16,843.000 SY	.		.	
0580	509.1000 Joint Repair	344.000 SY	.		.	
0590	509.1500 Concrete Surface Repair	540.000 SF	.		.	
0600	509.2000 Full-Depth Deck Repair	3.000 SY	.		.	
0610	509.2500 Concrete Masonry Overlay Decks	1,089.000 CY	.		.	
0620	517.1800.S Structure Repainting Recycled Abrasive (structure) 0001. B-67-0014	LUMP	LUMP		.	

SCHEDULE OF ITEMS

REVISED:

CONTRACT:
20150915002PROJECT(S):
1060-44-70FEDERAL ID(S):
WISC 2015484

CONTRACTOR : _____

LINE NO	ITEM DESCRIPTION	APPROX. QUANTITY AND UNITS	UNIT PRICE		BID AMOUNT	
			DOLLARS	CTS	DOLLARS	CTS
0630	517.1800.S Structure Repainting Recycled Abrasive (structure) 0002. B-67-140	LUMP	LUMP			.
0640	517.1800.S Structure Repainting Recycled Abrasive (structure) 0003. B-67-234	LUMP	LUMP			.
0650	517.1800.S Structure Repainting Recycled Abrasive (structure) 0004. B-67-235	LUMP	LUMP			.
0660	517.4500.S Negative Pressure Containment and Collection of Waste Materials (structure) 0001. B-67-0014	LUMP	LUMP			.
0670	517.4500.S Negative Pressure Containment and Collection of Waste Materials (structure) 0002. B-67-140	LUMP	LUMP			.
0680	517.4500.S Negative Pressure Containment and Collection of Waste Materials (structure) 0003. B-67-234	LUMP	LUMP			.
0690	517.4500.S Negative Pressure Containment and Collection of Waste Materials (structure) 0004. B-67-235	LUMP	LUMP			.
0700	517.6001.S Portable Decontamination Facility	EACH	4.000			.

SCHEDULE OF ITEMS

REVISED:

CONTRACT:
20150915002PROJECT(S):
1060-44-70FEDERAL ID(S):
WISC 2015484

CONTRACTOR : _____

LINE NO	ITEM DESCRIPTION	APPROX. QUANTITY AND UNITS	UNIT PRICE		BID AMOUNT	
			DOLLARS	CTS	DOLLARS	CTS
0710	601.0409 Concrete Curb & Gutter 30-Inch Type A	161.000 LF
0720	602.0410 Concrete Sidewalk 5-Inch	582.000 SF
0730	603.8000 Concrete Barrier Temporary Precast Delivered	30,171.000 LF
0740	603.8125 Concrete Barrier Temporary Precast Installed	37,032.000 LF
0750	604.0400 Slope Paving Concrete	4.000 SY
0760	604.9010.S Slope Paving Repair Crushed Aggregate	168.000 CY
0770	604.9015.S Reseal Crushed Aggregate Slope Paving	5,020.000 SY
0780	611.8115 Adjusting Inlet Covers	3.000 EACH
0790	614.0200 Steel Thrie Beam Structure Approach	42.000 LF
0800	614.0305 Steel Plate Beam Guard Class A	125.000 LF
0810	614.0345 Steel Plate Beam Guard Short Radius	61.000 LF

SCHEDULE OF ITEMS

REVISED:

CONTRACT:
20150915002PROJECT(S):
1060-44-70FEDERAL ID(S):
WISC 2015484

CONTRACTOR : _____

LINE NO	ITEM DESCRIPTION	APPROX. QUANTITY AND UNITS	UNIT PRICE		BID AMOUNT	
			DOLLARS	CTS	DOLLARS	CTS
0820	614.0390 Steel Plate Beam Guard Short Radius Terminal	2.000 EACH	.		.	
0830	614.0905 Crash Cushions Temporary	30.000 EACH	.		.	
0840	614.2300 MGS Guardrail 3	2,950.000 LF	.		.	
0850	614.2500 MGS Thrie Beam Transition	375.000 LF	.		.	
0860	614.2610 MGS Guardrail Terminal EAT	9.000 EACH	.		.	
0870	614.2620 MGS Guardrail Terminal Type 2	3.000 EACH	.		.	
0880	619.1000 Mobilization	1.000 EACH	.		.	
0890	620.0300 Concrete Median Sloped Nose	11.000 SF	.		.	
0900	625.0500 Salvaged Topsoil	26,795.000 SY	.		.	
0910	627.0200 Mulching	499.000 SY	.		.	
0920	628.1905 Mobilizations Erosion Control	16.000 EACH	.		.	

SCHEDULE OF ITEMS

REVISED:

CONTRACT:
20150915002PROJECT(S):
1060-44-70FEDERAL ID(S):
WISC 2015484

CONTRACTOR : _____

LINE NO	ITEM DESCRIPTION	APPROX. QUANTITY AND UNITS	UNIT PRICE		BID AMOUNT	
			DOLLARS	CTS	DOLLARS	CTS
0930	628.1910 Mobilizations Emergency Erosion Control	7.000 EACH
0940	628.2004 Erosion Mat Class I Type B	45,077.000 SY
0950	628.7010 Inlet Protection Type B	27.000 EACH
0960	628.7015 Inlet Protection Type C	11.000 EACH
0970	628.7570 Rock Bags	1,915.000 EACH
0980	629.0210 Fertilizer Type B	34.000 CWT
0990	630.0120 Seeding Mixture No. 20	878.000 LB
1000	630.0160 Seeding Mixture No. 60	8.000 LB
1010	630.0200 Seeding Temporary	787.000 LB
1020	634.0612 Posts Wood 4x6-Inch X 12-FT	24.000 EACH
1030	634.0618 Posts Wood 4x6-Inch X 18-FT	283.000 EACH

SCHEDULE OF ITEMS

REVISED:

CONTRACT:
20150915002PROJECT(S):
1060-44-70FEDERAL ID(S):
WISC 2015484

CONTRACTOR : _____

LINE NO	ITEM DESCRIPTION	APPROX. QUANTITY AND UNITS	UNIT PRICE		BID AMOUNT	
			DOLLARS	CTS	DOLLARS	CTS
1040	634.0622 Posts Wood 4x6-Inch X 22-FT	10.000 EACH
1050	634.0816 Posts Tubular Steel 2x2-Inch X 16-FT	10.000 EACH
1060	635.0200 Sign Supports Structural Steel HS	2,000.000 LB
1070	635.0300 Sign Supports Replacing Base Connection Bolts	16.000 EACH
1080	636.0100 Sign Supports Concrete Masonry	4.800 CY
1090	636.0500 Sign Supports Steel Reinforcement	294.000 LB
1100	637.1220 Signs Type I Reflective SH	7,215.500 SF
1110	637.2210 Signs Type II Reflective H	2,533.025 SF
1120	637.2215 Signs Type II Reflective H Folding	473.800 SF
1130	637.2230 Signs Type II Reflective F	569.500 SF
1140	638.2102 Moving Signs Type II	25.000 EACH

SCHEDULE OF ITEMS

REVISED:

CONTRACT:
20150915002PROJECT(S):
1060-44-70FEDERAL ID(S):
WISC 2015484

CONTRACTOR : _____

LINE NO	ITEM DESCRIPTION	APPROX. QUANTITY AND UNITS	UNIT PRICE		BID AMOUNT	
			DOLLARS	CTS	DOLLARS	CTS
1150	638.2601 Removing Signs Type I	20.000 EACH
1160	638.2602 Removing Signs Type II	294.000 EACH
1170	638.3000 Removing Small Sign Supports	203.000 EACH
1180	638.3100 Removing Structural Steel Sign Supports	2.000 EACH
1200	643.0100 Traffic Control (project) 0001. 1060-44-70	1.000 EACH
1210	643.0300 Traffic Control Drums	129,818.000 DAY
1220	643.0410 Traffic Control Barricades Type II	4,629.000 DAY
1230	643.0705 Traffic Control Warning Lights Type A	9,172.000 DAY
1240	643.0715 Traffic Control Warning Lights Type C	35,990.000 DAY
1250	643.0800 Traffic Control Arrow Boards	1,020.000 DAY
1260	643.0900 Traffic Control Signs	14,798.000 DAY

SCHEDULE OF ITEMS

REVISED:

CONTRACT:
20150915002PROJECT(S):
1060-44-70FEDERAL ID(S):
WISC 2015484

CONTRACTOR : _____

LINE NO	ITEM DESCRIPTION	APPROX. QUANTITY AND UNITS	UNIT PRICE		BID AMOUNT	
			DOLLARS	CTS	DOLLARS	CTS
1270	643.0910 Traffic Control Covering Signs Type I	2.000 EACH
1280	643.0920 Traffic Control Covering Signs Type II	20.000 EACH
1290	643.1000 Traffic Control Signs Fixed Message	144.000 SF
1300	643.1050 Traffic Control Signs PCMS	1,304.000 DAY
1310	643.1055.S Truck or Trailer Mounted Attenuator	272.000 DAY
1320	643.3000 Traffic Control Detour Signs	2,881.000 DAY
1330	646.0106 Pavement Marking Epoxy 4-Inch	87,542.000 LF
1340	646.0600 Removing Pavement Markings	66,759.000 LF
1350	646.0841.S Pavement Marking Grooved Wet Reflective Contrast Tape 4-Inch	10,021.000 LF
1360	646.0843.S Pavement Marking Grooved Wet Reflective Contrast Tape 8-Inch	10,804.000 LF

SCHEDULE OF ITEMS

REVISED:

CONTRACT:
20150915002PROJECT(S):
1060-44-70FEDERAL ID(S):
WISC 2015484

CONTRACTOR : _____

LINE NO	ITEM DESCRIPTION	APPROX. QUANTITY AND UNITS	UNIT PRICE		BID AMOUNT	
			DOLLARS	CTS	DOLLARS	CTS
1430	647.0726 Pavement Marking Diagonal Epoxy 12-Inch	93.000 LF
1440	647.0746 Pavement Marking Diagonal Epoxy 24-Inch	676.000 LF
1450	647.0955 Removing Pavement Markings Arrows	15.000 EACH
1460	647.0965 Removing Pavement Markings Words	12.000 EACH
1470	649.0400 Temporary Pavement Marking Removable Tape 4-Inch	172,871.000 LF
1480	649.1200 Temporary Pavement Marking Stop Line Removable Tape 18-Inch	150.000 LF
1490	649.2100 Temporary Raised Pavement Markers	244.000 EACH
1500	652.0225 Conduit Rigid Nonmetallic Schedule 40 2-Inch	323.000 LF
1510	652.0235 Conduit Rigid Nonmetallic Schedule 40 3-Inch	158.000 LF
1520	652.0615 Conduit Special 3-Inch	130.000 LF
1530	652.0700.S Install Conduit into Existing Item	11.000 EACH

SCHEDULE OF ITEMS

REVISED:

CONTRACT:
20150915002PROJECT(S):
1060-44-70FEDERAL ID(S):
WISC 2015484

CONTRACTOR : _____

LINE NO	ITEM DESCRIPTION	APPROX. QUANTITY AND UNITS	UNIT PRICE		BID AMOUNT	
			DOLLARS	CTS	DOLLARS	CTS
1540	652.0800 Conduit Loop Detector	112.000 LF	.		.	
1550	653.0135 Pull Boxes Steel 24x36-Inch	2.000 EACH	.		.	
1560	653.0140 Pull Boxes Steel 24x42-Inch	1.000 EACH	.		.	
1570	653.0905 Removing Pull Boxes	3.000 EACH	.		.	
1580	654.0105 Concrete Bases Type 5	15.000 EACH	.		.	
1590	654.0220 Concrete Control Cabinet Bases Type 10	6.000 EACH	.		.	
1600	655.0260 Cable Traffic Signal 12-14 AWG	445.000 LF	.		.	
1610	655.0515 Electrical Wire Traffic Signals 10 AWG	348.000 LF	.		.	
1620	655.0610 Electrical Wire Lighting 12 AWG	1,350.000 LF	.		.	
1630	655.0630 Electrical Wire Lighting 4 AWG	3,921.000 LF	.		.	
1640	655.0700 Loop Detector Lead In Cable	303.000 LF	.		.	

SCHEDULE OF ITEMS

REVISED:

CONTRACT:
20150915002PROJECT(S):
1060-44-70FEDERAL ID(S):
WISC 2015484

CONTRACTOR : _____

LINE NO	ITEM DESCRIPTION	APPROX. QUANTITY AND UNITS	UNIT PRICE		BID AMOUNT	
			DOLLARS	CTS	DOLLARS	CTS
1650	655.0800 Loop Detector Wire	346.000 LF	.		.	
1660	657.0100 Pedestal Bases	6.000 EACH	.		.	
1670	657.0255 Transformer Bases Breakaway 11 1/2-Inch Bolt Circle	14.000 EACH	.		.	
1680	657.0425 Traffic Signal Standards Aluminum 15-FT	6.000 EACH	.		.	
1690	661.0200 Temporary Traffic Signals for Intersections (location) 3001. IH 94 EB Rmps & STH 164/CTH J	LUMP	LUMP		.	
1700	661.0200 Temporary Traffic Signals for Intersections (location) 3002. IH 94 WB Rmps & STH 164/CTH J	LUMP	LUMP		.	
1710	661.0300 Generators	4.000 DAY	.		.	
1720	662.1032.S Ramp Closure Gates Hardwired 32-FT	3.000 EACH	.		.	
1730	662.1037.S Ramp Closure Gates Hardwired 37-FT	2.000 EACH	.		.	
1740	662.1040.S Ramp Closure Gates Hardwired 40-FT	3.000 EACH	.		.	

SCHEDULE OF ITEMS

REVISED:

CONTRACT:
20150915002PROJECT(S):
1060-44-70FEDERAL ID(S):
WISC 2015484

CONTRACTOR : _____

LINE NO	ITEM DESCRIPTION	APPROX. QUANTITY AND UNITS	UNIT PRICE		BID AMOUNT	
			DOLLARS	CTS	DOLLARS	CTS
1750	662.2028.S Ramp Closure Gates Solar 28-FT	1.000 EACH	.		.	
1760	662.2030.S Ramp Closure Gates Solar 30-FT	2.000 EACH	.		.	
1770	662.2037.S Ramp Closure Gates Solar 37-FT	1.000 EACH	.		.	
1780	662.2040.S Ramp Closure Gates Solar 40-FT	2.000 EACH	.		.	
1790	662.3028.S Ramp Closure Gate Arms Stockpile 28-FT	1.000 EACH	.		.	
1800	662.3030.S Ramp Closure Gate Arms Stockpile 30-FT	1.000 EACH	.		.	
1810	662.3032.S Ramp Closure Gate Arms Stockpile 32-FT	1.000 EACH	.		.	
1820	662.3037.S Ramp Closure Gate Arms Stockpile 37-FT	1.000 EACH	.		.	
1830	662.3040.S Ramp Closure Gate Arms Stockpile 40-FT	1.000 EACH	.		.	
1840	662.4000.S Ramp Closure Gate Flashers Stockpile	1.000 EACH	.		.	
1850	670.0100 Field System Integrator 3001. FTMS	LUMP	LUMP		.	

SCHEDULE OF ITEMS

REVISED:

CONTRACT:
20150915002PROJECT(S):
1060-44-70FEDERAL ID(S):
WISC 2015484

CONTRACTOR : _____

LINE NO	ITEM DESCRIPTION	APPROX. QUANTITY AND UNITS	UNIT PRICE		BID AMOUNT	
			DOLLARS	CTS	DOLLARS	CTS
1860	670.0200 ITS Documentation 3001. FTMS	LUMP	LUMP			.
1870	675.0400.S Install Ethernet Switch	EACH	1.000	.		.
1880	678.0006 Install Fiber Optic Cable Outdoor Plant 6-CT	LF	1,148.000	.		.
1890	678.0400 Fiber Optic Termination	EACH	12.000	.		.
1900	678.0500 Communication System Testing 3001. FTMS	LUMP	LUMP			.
1910	690.0150 Sawing Asphalt	LF	43,649.000	.		.
1920	690.0250 Sawing Concrete	LF	1,907.000	.		.
1930	715.0415 Incentive Strength Concrete Pavement	DOL	500.000	1.00000		500.00
1940	ASP.1T0A On-the-Job Training Apprentice at \$5.00/HR	HRS	2,200.000	5.00000		11000.00
1950	ASP.1T0G On-the-Job Training Graduate at \$5. 00/HR	HRS	3,000.000	5.00000		15000.00

SCHEDULE OF ITEMS

REVISED:

CONTRACT:
20150915002PROJECT(S):
1060-44-70FEDERAL ID(S):
WISC 2015484

CONTRACTOR : _____

LINE NO	ITEM DESCRIPTION	APPROX. QUANTITY AND UNITS	UNIT PRICE		BID AMOUNT	
			DOLLARS	CTS	DOLLARS	CTS
1960	SPV.0060 Special 0001. Salvage Terminal High-Tension Cable TL-3, Gibraltar	EACH 4.000	.		.	
1970	SPV.0060 Special 0002. Terminal High-Tension Cable, TL-3, Gibraltar	EACH 4.000	.		.	
1980	SPV.0060 Special 0003. Reinstall Terminal High-Tension Cable TL-3, Gibraltar	EACH 4.000	.		.	
1990	SPV.0060 Special 1000. Lamp Disposal High Intensity Discharge	EACH 2.000	.		.	
2000	SPV.0060 Special 1001. Group Luminaire Maintenance 30-Foot 250W HPS	EACH 2.000	.		.	
2010	SPV.0060 Special 1002. Removing And Reinstalling Lighting Units	EACH 1.000	.		.	
2020	SPV.0060 Special 1300. Ground Rod	EACH 6.000	.		.	
2030	SPV.0060 Special 3001. Install Fiber Optic Media Converter	EACH 1.000	.		.	
2040	SPV.0060 Special 4000. Cleaning and Painting Bearings	EACH 17.000	.		.	
2050	SPV.0060 Special 4001. Clean Deck Inlets	EACH 8.000	.		.	

SCHEDULE OF ITEMS

REVISED:

CONTRACT:
20150915002

PROJECT(S):
1060-44-70

FEDERAL ID(S):
WISC 2015484

CONTRACTOR : _____

LINE NO	ITEM DESCRIPTION	APPROX. QUANTITY AND UNITS	UNIT PRICE		BID AMOUNT	
			DOLLARS	CTS	DOLLARS	CTS
2060	SPV.0060 Special 8000. Cover Plates Temporary Special	1.000 EACH	.		.	
2070	SPV.0090 Special 0001. Salvage High-Tension Cable TL-3, Socketed, Gibraltar	2,685.000 LF	.		.	
2080	SPV.0090 Special 0002. High-Tension Cable TL-3, Socketed, Gibraltar	2,280.000 LF	.		.	
2090	SPV.0090 Special 0003. Reinstall High-Tension Cable TL-3, Socketed, Gibraltar	2,280.000 LF	.		.	
2100	SPV.0105 Special 0001. Survey Project 1060-44-70	LUMP	LUMP		.	
2110	SPV.0105 Special 1000. Maintenance of Lighting Systems	LUMP	LUMP		.	
2120	SPV.0105 Special 3001. Temp EVP System IH 94 EB Ramps & STH 164 / CTH J	LUMP	LUMP		.	
2130	SPV.0105 Special 3002. Temp EVP System IH 94 WB Ramps & STH 164 / CTH J	LUMP	LUMP		.	
2140	SPV.0105 Special 3003. Temp Vehicle Detction System for Intrsectns IH 94 EB Ramps & STH 164/CTH J	LUMP	LUMP		.	

SCHEDULE OF ITEMS

REVISED:

CONTRACT:
20150915002PROJECT(S):
1060-44-70FEDERAL ID(S):
WISC 2015484

CONTRACTOR : _____

LINE NO	ITEM DESCRIPTION	APPROX. QUANTITY AND UNITS	UNIT PRICE		BID AMOUNT	
			DOLLARS	CTS	DOLLARS	CTS
2150	SPV.0105 Special 3004. Temp Vehicle Detection System for Intrsctns IH 94 WB Ramps & STH 164/CTH J	LUMP	LUMP			.
2160	SPV.0105 Special 3005. Covering Traffic Signal Heads IH 94 Ramps & STH 164 / CTH J	LUMP	LUMP			.
2170	SPV.0105 Special 3007. Remove Traffic Signals IH 94 & STH 164/CTH J	LUMP	LUMP			.
2180	SPV.0105 Special 3008. Remove Loop Detector Wire & Lead- in Cable IH 94 & STH 164/CTH J	LUMP	LUMP			.
2190	SPV.0105 Special 4000. Vegetation Removal B-67-14	LUMP	LUMP			.
2200	SPV.0105 Special 4001. Vegetation Removal B-67-60	LUMP	LUMP			.
2210	SPV.0105 Special 4002. Vegetation Removal B-67-61	LUMP	LUMP			.
2220	SPV.0105 Special 4003. Vegetation Removal B-67-62	LUMP	LUMP			.
2230	SPV.0105 Special 4004. Vegetation Removal B-67-63	LUMP	LUMP			.
2240	SPV.0105 Special 4005. Vegetation Removal B-67-65	LUMP	LUMP			.

SCHEDULE OF ITEMS

REVISED:

CONTRACT:
20150915002PROJECT(S):
1060-44-70FEDERAL ID(S):
WISC 2015484

CONTRACTOR : _____

LINE NO	ITEM DESCRIPTION	APPROX. QUANTITY AND UNITS	UNIT PRICE		BID AMOUNT	
			DOLLARS	CTS	DOLLARS	CTS
2250	SPV.0105 Special 4006. Vegetation Removal B-67-66	LUMP	LUMP			.
2260	SPV.0105 Special 4007. Vegetation Removal B-67-67	LUMP	LUMP			.
2270	SPV.0105 Special 4008. Vegetation Removal B-67-68	LUMP	LUMP			.
2280	SPV.0105 Special 4009. Vegetation Removal B-67-140	LUMP	LUMP			.
2290	SPV.0105 Special 4010. Vegetation Removal B-67-234	LUMP	LUMP			.
2300	SPV.0105 Special 4011. Vegetation Removal B-67-235	LUMP	LUMP			.
2310	SPV.0105 Special 4020. Fence Removal and Replacement B-67-234	LUMP	LUMP			.
2320	SPV.0105 Special 4021. Fence Removal and Replacement B-67-235	LUMP	LUMP			.
2330	SPV.0165 Special 4000. Removing Loose Concrete	SF 438.000	.			.
2340	SPV.0170 Special 0001. Proof Rolling	STA 192.000	.			.
2350	SPV.0180 Special 0001. Geogrid Reinforcement	SY 865.000	.			.

SCHEDULE OF ITEMS

REVISED:

CONTRACT:
20150915002PROJECT(S):
1060-44-70FEDERAL ID(S):
WISC 2015484

CONTRACTOR : _____

LINE NO	ITEM DESCRIPTION	APPROX. QUANTITY AND UNITS	UNIT PRICE		BID AMOUNT	
			DOLLARS	CTS	DOLLARS	CTS
2360	SPV.0180 Special 4000. Clean Abutment Seats	111.000 SY
2370	SPV.0195 Special 0001. Cold Patch	30.000 TON
2380	SPV.0035 Special 0001. EBS Excavation	5,184.000 CY
2390	SPV.0105 Special 0002. Field Office Fixed	LUMP	LUMP	.	.	.
2400	SPV.0060 Special 0004. Pavement Marking Contrast Grooved Preformed Thermoplastic Arrows Type 1	4.000 EACH
2410	SPV.0060 Special 0005. Pavement Marking Contrast Grooved Preformed Thermoplastic Arrows Type 2	14.000 EACH
2420	SPV.0060 Special 0006. Pavement Marking Contrast Grooved Preformed Thermoplastic Arrows Type 3	1.000 EACH
2430	SPV.0060 Special 0007. Pavement Marking Contrast Grooved Preformed Thermoplastic Arrows Type 5	2.000 EACH

SCHEDULE OF ITEMS

REVISED:

CONTRACT:
20150915002

PROJECT(S):
1060-44-70

FEDERAL ID(S):
WISC 2015484

CONTRACTOR : _____

LINE NO	ITEM DESCRIPTION	APPROX. QUANTITY AND UNITS	UNIT PRICE		BID AMOUNT	
			DOLLARS	CTS	DOLLARS	CTS
2440	SPV.0060 Special 0008. Pavement Marking Contrast Grooved Preformed Thermoplastic Words	17.000 EACH	.		.	
2450	SPV.0090 Special 0004. Pavement Marking Contrast Grooved Preformed Thermoplastic Stop Line 18-In	257.000 LF	.		.	
	SECTION 0001 TOTAL				.	
	TOTAL BID				.	