



Wisconsin Department of Transportation

August 20, 2015

Division of Transportation Systems Development

Bureau of Project Development
4802 Sheboygan Avenue, Rm 601
P O Box 7916
Madison, WI 53707-7916

Telephone: (608) 266-1631
Facsimile (FAX): (608) 266-8459

NOTICE TO ALL CONTRACTORS:

Proposal #08: 4607-09-71, WISC 2015 490
Village of Allouez, CTH X
WI Central LTD Railroad Bridge
CTH X
BrownCounty

Letting of September 15, 2015

This is Addendum No. 01, which provides for the following:

Plan Sheets

Revised Plan Sheets	
Plan Sheet	Plan Sheet Title (brief description of changes to sheet)
74	Removed MSE Anchors from South Abutment Details for Structure B-5-411
76	Removed MSE Anchors from North Abutment Details for Structure B-5-411
94	Revised MSE Wall External Stability Table for Structure R-5-301

Plan Sheets

The following 8½ x 11-inch sheets are attached and made part of the plans for this proposal:
Revised: 74, 76, 94

The responsibility for notifying potential subcontractors and suppliers of these changes remains with the prime contractor.

Sincerely,

Mike Coleman

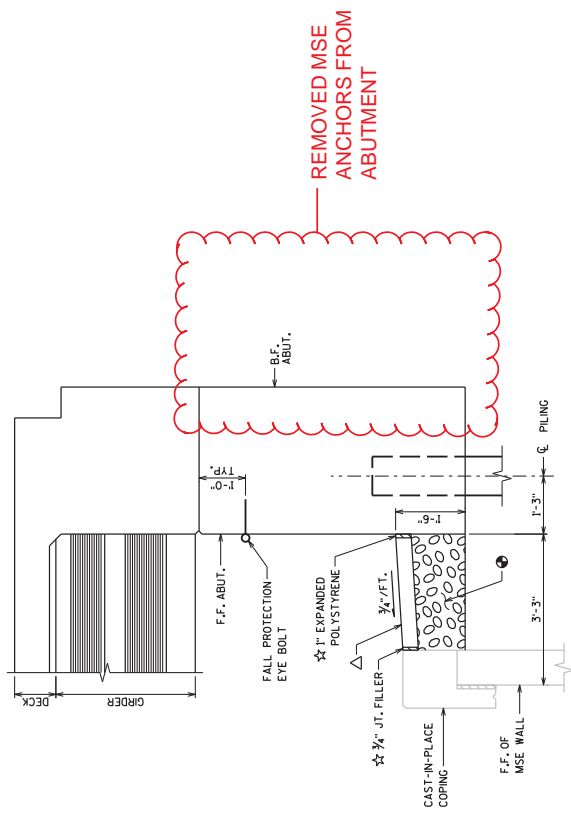
Proposal Development Specialist
Proposal Management Section

END OF ADDENDUM

LEGEND

- ★ SEAL ALL EXPOSED HORIZONTAL AND VERTICAL SURFACES OF FILLER AND EXPANDED POLYSTYRENE WITH NON-STAINING, GRAY NON-LUMINOUS JOINT SEALER, IT DEEP AND HOLD 1/8" BELOW SURFACE OF CONCRETE.
- △ SLOPE PAVING CONCRETE, MINIMUM 4" THICKNESS. PLACE CONSTRUCTION JOINTS EVERY 10' MAXIMUM. SEE SLOPE PAVING CONSTRUCTION JOINT DETAIL. TO BE PAID AS "SLOPE PAVING CONCRETE".
- MSE BACKFILL OR SIZE 2 COARSE AGGREGATE, COST INCIDENTAL TO BID ITEM "SLOPE PAVING CONCRETE".

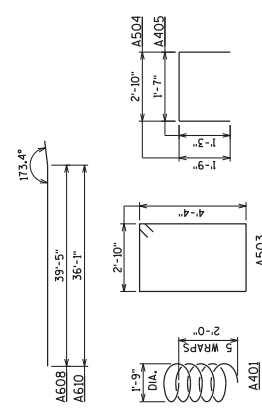
THE DESIGN OF THE WALL IN FRONT OF THE ABUTMENT SHALL INCLUDE THE HORIZONTAL EARTH LOADS AND 240 PSF LIVE LOAD SURCHARGE ACTING ON THE BACK OF THE ABUTMENT BELOW THE BEAM SEATS.



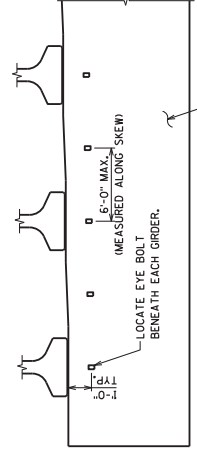
CROSS SECTION THRU ABUTMENT AT MSE WALL

BILL OF BARS

BAR MARK	NO. REVD.	LENGTH	UNIT	LOCATION
A401	10	28'-0"	X	BODY - ONE PER PILE
A402	20	2'-3"	X	BODY - TWO PER PILE
A503	78	15'-0"	X	BODY - STIRRUPS
A504	45	6'-1"	X	BODY - VERTICAL TOP
A405	33	3'-11"	X	BODY - VERTICAL BTW BEAM SEATS
A406	22	4'-10"	X	BODY - HORIZ. BTW BEAM SEATS
A607	9	4'-0"	X	BODY - HORIZONTAL F.F.
A608	5	4'-0"	X	BODY - HORIZONTAL B.F.
A609	9	3'-8"	X	BODY - HORIZONTAL F.F.
A610	5	3'-8"	X	BODY - HORIZONTAL B.F.
A411	4	2'-4"	X	BODY - HORIZONTAL TOP
A412	4	2'-3"	X	BODY - HORIZONTAL TOP



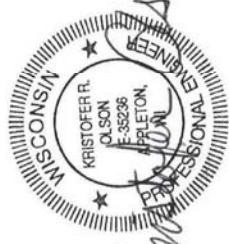
BAR BENDING DIAGRAMS



PARTIAL ELEVATION OF F.F. ABUTMENT SHOWING EYE BOLT FALL PROTECTION

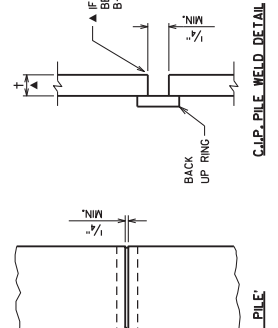
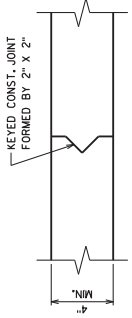
(RETAINING WALL NOT SHOWN)

William C. Decker
SDR
08/19/15



8/19/15

SLOPE PAVING CONSTRUCTION JOINT DETAIL



PILE SPLICE DETAILS

IF 1/4" IS 1/4" OR LESS
OR LESS
B-U4g
UP
B-U4g-GF

IF 1/4" > 1/4" USE SINGLE WELD B-U4g OR B-U4g-GF

BACK UP RING
3/8" MIN. THICKNESS FOR SMW AND 1/4" MIN. THICKNESS FOR FCAM.

ELECTROPLATED FERRULE LOOP INSERT (MEDIUM HIGH CARBON WIRE) OR APPROVED EQUAL. MINIMUM STRENGTH OF 3500 LB.-ALLOWABLE INSERT DIAMETERS INCLUDE 3/4", 5/8", OR 1".

RECESS CONCRETE SO THAT THE BOLT SHOULDER BEARS ON THE FERRULE LOOP INSERT.

STAINLESS STEEL OR ELECTROPLATED MACHINE EYE BOLT WITH SHOULDER TO MATCH DIAMETER OF FERRULE LOOP INSERT.

EYE BOLT DETAIL

COST INCIDENTAL TO BID ITEM
CONCRETE MASONRY BRIGES

NO.	DATE	REVISION	BY
1	8-19-15	REMOVED MSE WALL ANCHORS	BRE

STATE OF WISCONSIN
DEPARTMENT OF TRANSPORTATION

STRUCTURE B-5-411

DESIGNED BY: BRE
CHECKED BY: KRO

SOUTH ABUTMENT
DETAILS

SHEET 5 OF 16

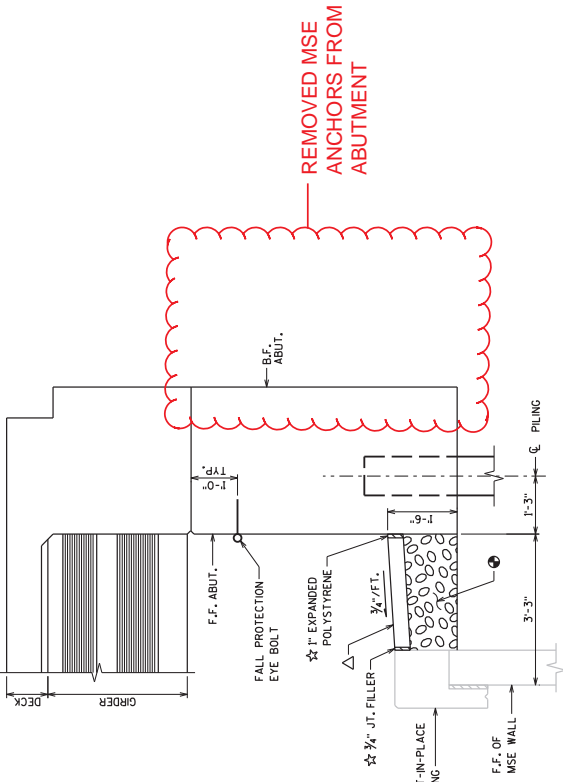
74

Addendum No. 1
ID 4607-09-71
Revised Sheet 74
August 20, 2015

STATE PROJECT NUMBER
4607-09-71

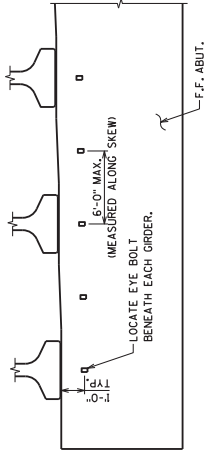
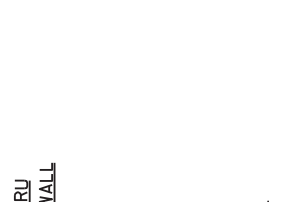
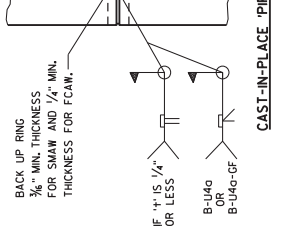
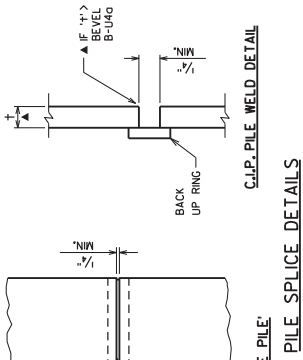
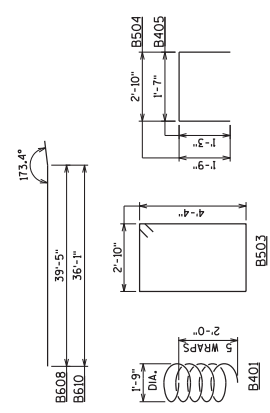
LEGEND

- ☆ SEAL ALL EXPOSED HORIZONTAL AND VERTICAL SURFACES OF FILLER AND EXPANDED POLYSTYRENE WITH NON-STAINING, GRAY, NON-BLUMINOUS JOINT SEALER; IT DEEP AND HOLD 1/8" BELOW SURFACE OF CONCRETE.
 - △ SLOPE PAVING CONCRETE, MINIMUM 4" THICKNESS. PLACE CONSTRUCTION JOINTS EVERY 10' MAXIMUM. SEE SLOPE PAVING CONSTRUCTION JOINT DETAIL. TO BE PAID AS "SLOPE PAVING CONCRETE".
 - MSE BACKFILL OR SIZE 2 COARSE AGGREGATE, COST INCIDENTAL TO BID ITEM "SLOPE PAVING CONCRETE".
- THE DESIGN OF THE WALL IN FRONT OF THE ABUTMENT SHALL INCLUDE THE HORIZONTAL EARTH LOADS AND 240 PSF LIVE LOAD SURCHARGE ACTING ON THE BACK OF THE ABUTMENT BELOW THE BEAM SEATS.



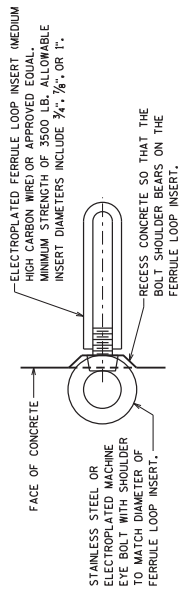
BILL OF BARS

BAR MARK	NO. REQ'D.	LENGTH	USED	LOCATION
B401	10	28'-0"	X	BODY - ONE PER PILE
B402	20	2'-3"	X	BODY - TWO PER PILE
B503	78	15'-0"	X	BODY - STIRRUPS
B504	45	6'-1"	X	BODY - VERTICAL TOP
B405	33	3'-11"	X	BODY - VERTICAL BTW BEAM SEATS
B406	22	4'-10"	X	BODY - HORIZ. BTW BEAM SEATS
B607	9	4'-0"	X	BODY - HORIZONTAL F.F.
B608	5	4'-0"	X	BODY - HORIZONTAL B.F.
B609	9	3'-8"	X	BODY - HORIZONTAL F.F.
B610	5	3'-8"	X	BODY - HORIZONTAL B.F.
B411	4	2'-4"	X	BODY - HORIZONTAL TOP
B412	4	2'-3"	X	BODY - HORIZONTAL TOP



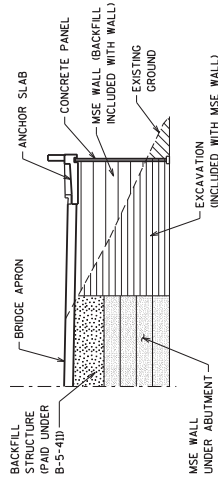
Addendum No. 1
ID 4607-09-71
Revised Sheet 76
August 20, 2015

1	8-19-15	REMOVED MSE WALL ANCHORS	BY
		REVISION	
STATE OF WISCONSIN DEPARTMENT OF TRANSPORTATION			
STRUCTURE B-5-411			
	DESIGNED BY	DRWNS	KRO
	CHECKED BY	CKD	
NORTH ABUTMENT DETAILS			SHEET 7 OF 16
			76

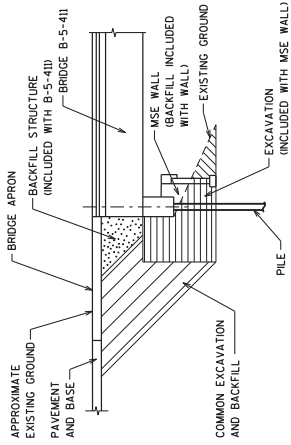


William C. Decker SDR
08/19/15

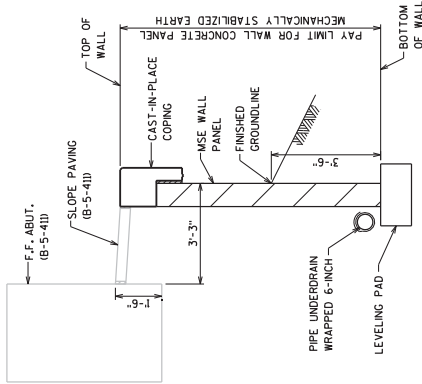
8/19/15



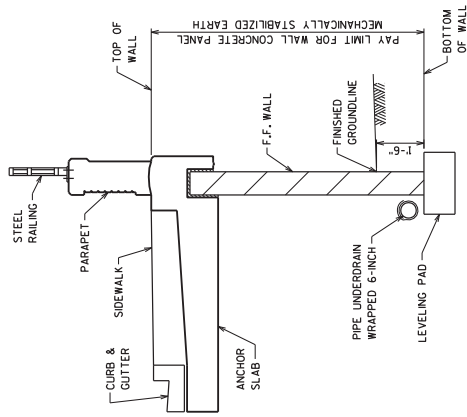
MSE WALL UNDER BRIDGE APRON (TYP)



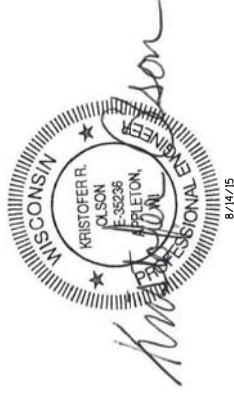
MSE WALL UNDER ABUTMENT (TYP)



TYPICAL SECTION THRU WALL AT ABUTMENT



TYPICAL SECTION THRU WALL AT ANCHOR SLAB



William C. Decker SDR
08/17/15

BENCH MARKS (NAD 83)

NO.	STATION	DESCRIPTION	ELEV.
1	STA 13+57.44 RT	BURY BOLT (NW) OF HYDRANT, NE CORNER OF S. WEBSTER AVE. & HASTINGS ST.	649.58
2	STA 11+88.30 RT	600 SPIKE IN PPA 130 EE41 / EAST SIDE OF S. WEBSTER AVE.	641.25
3	STA 7+24.51 LT	*OPEN ON HYDRANT / WEST SIDE OF S. WEBSTER AVE.	638.66

TOTAL ESTIMATED QUANTITIES

ITEM NO.	BID ITEMS	UNITS	QTY	TOTALS
502.3200	PROTECTIVE SURFACE TREATMENT	SF	41	41
504.0500	CONCRETE MASONRY RETAINING WALLS	CY	26	26
505.0615	BAR STEEL REINFORCEMENT HS COATED RETAINING WALLS	LB	1,800	1,800
511.2000	TEMPORARY SHORING (R-5-30D)	SF	118	118
513.7015	RAILING STEEL TYPE C3	LS	1	1
517.1050.S.02	CONCRETE STANNING	SF	300	300
517.1050.S.02	ARCHITECTURAL SURFACE TREATMENT	SF	55	55
604.0500	SLOPE PAVING CRUSHED AGGREGATE	SF	307	307
612.0405	PIPE UNDERDRAIN WRAPPED 6-INCH	LF	160	160
SPV.0185.01	STANNING CONCRETE BRICK	SF	55	55
SPV.0185.02	WALL CONCRETE PANEL MECHANICALLY STABILIZED EARTH LRRD/OMP	SF	964	964
	NON-BID ITEMS			
	FILLER	SIZE	-----	1/2" & 3/4"
	EXPANDED POLYSTYRENE	SIZE	-----	1"

RESULTS OF MSE WALL EXTERNAL STABILITY EVALUATION

DIMENSIONS	
WALL HEIGHT (FEET)?	11.4
EXPOSED WALL HEIGHT (FEET)	9.9
LENGTH OF REINFORCEMENT (FEET)	4.9
LENGTH OF REIN. / WALL HEIGHT	9.1
BORING LOCATION USED	0.8
APPROXIMATE STATION	B3
BACK SLOPE ABOVE WALL	30+20.1, 30+64.1
	N/A, 4
	N/A, 4
CAPACITY TO DEMAND RATIO (CDR)3	
SLIDING (CDR > 1.0)	1.3
ECCENTRICITY (CDR > 1.0)	1.2
GLOBAL STABILITY (CDR > 1.0)	1.2
BEARING RESISTANCE (CDR > 1.0)	16.9
REQUIRED BEARING CAPACITY (PSF)	3,100
	1,800

1. REFERENCES R-5-301 STATIONING
2. WALL HEIGHT INCLUDES A MINIMUM EMBEDMENT DEPTH OF 1.5 FEET FROM POINT 'W' TO 'X' AND FROM POINT 'Y' TO 'Z'. WALL HEIGHT INCLUDES A MINIMUM EMBEDMENT DEPTH OF 3.5 FEET FROM POINT 'X' TO 'Y'.
3. CDR REQUIREMENTS GIVEN IN CHAPTER 14 OF THE BRIDGE MANUAL.
4. N/A - NOT APPLICABLE

Addendum No. 1
ID 4607-09-71
Revised Sheet 94
August 20, 2015

NO.	DATE	REVISION	BY
1	8/14/15	UPDATED STABILITY TABLE	BRE

STATE OF WISCONSIN
DEPARTMENT OF TRANSPORTATION

STRUCTURE R-5-301

DESIGNED BY: BRE
CHECKED BY: KRO

CROSS SECTION & QUANTITIES

SHEET 2 OF 7

94