



# Wisconsin Department of Transportation

October 22, 2015

## Division of Transportation Systems Development

Bureau of Project Development  
4802 Sheboygan Avenue, Rm 601  
P O Box 7916  
Madison, WI 53707-7916

Telephone: (608) 266-1631  
Facsimile (FAX): (608) 266-8459

### NOTICE TO ALL CONTRACTORS:

**Proposal #03: 3364-03-72, WISC 2015 569**  
**Milwaukee Street, Village of Lomira**  
**Church Street to Maple Street**  
**STH 175**  
**Dodge County**

**3364-03-73**  
**Milwaukee Street, Village of Lomira**  
**Church Street to Maple Street**  
**STH 175**  
**Dodge County**

### Letting of November 10, 2015

This is Addendum No. 01, which provides for the following:

#### Schedule of Items

Deleted Bid Item Quantities	
Bid Item	Item Description
201.0120	Clearing

#### Plan Sheets

Revised Plan Sheets	
Plan Sheet	Plan Sheet Title (brief description of changes to sheet)
32	Storm Sewer - Tree removal note removed from plans.
51	MQ – Clearing item (201.0120, ID) removed from Miscellaneous Quantities
57	MQ – Clarification for structure depth calculation added.
74	Plan and Profile – Tree removal removed from plans.

#### Schedule of Items

Attached, dated October 22, 2015, are the revised Schedule of Items Pages 1 – 13.

**Plan Sheets**

The following 8½ x 11-inch sheets are attached and made part of the plans for this proposal:  
Revised: 32, 51, 57, 74

The responsibility for notifying potential subcontractors and suppliers of these changes remains with the prime contractor.

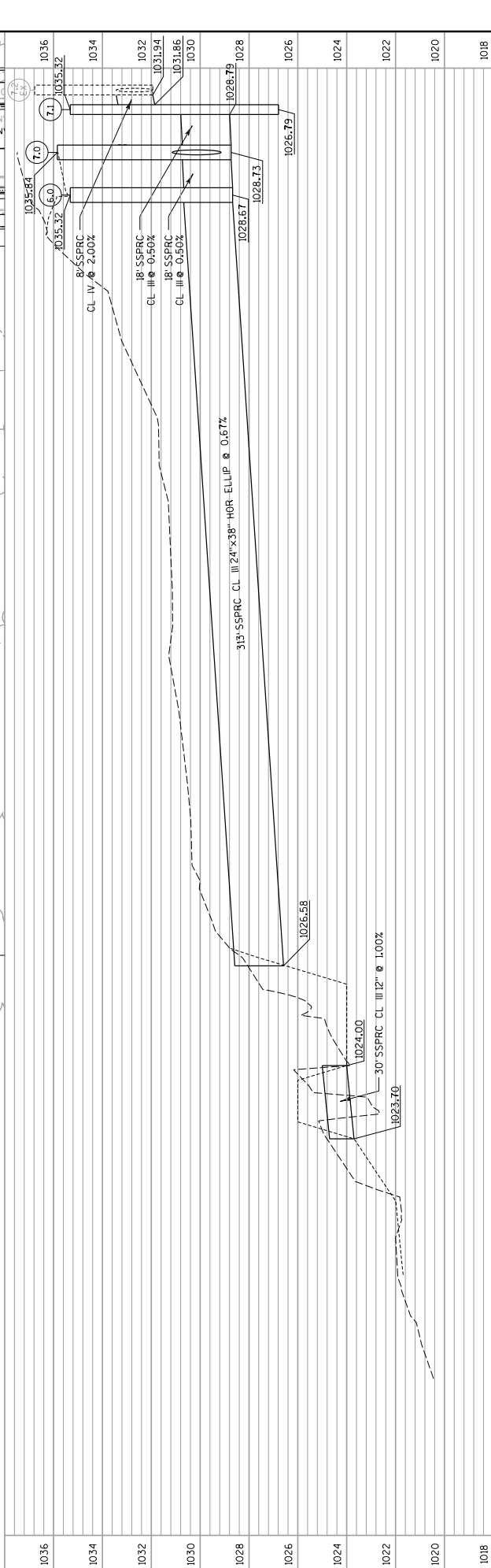
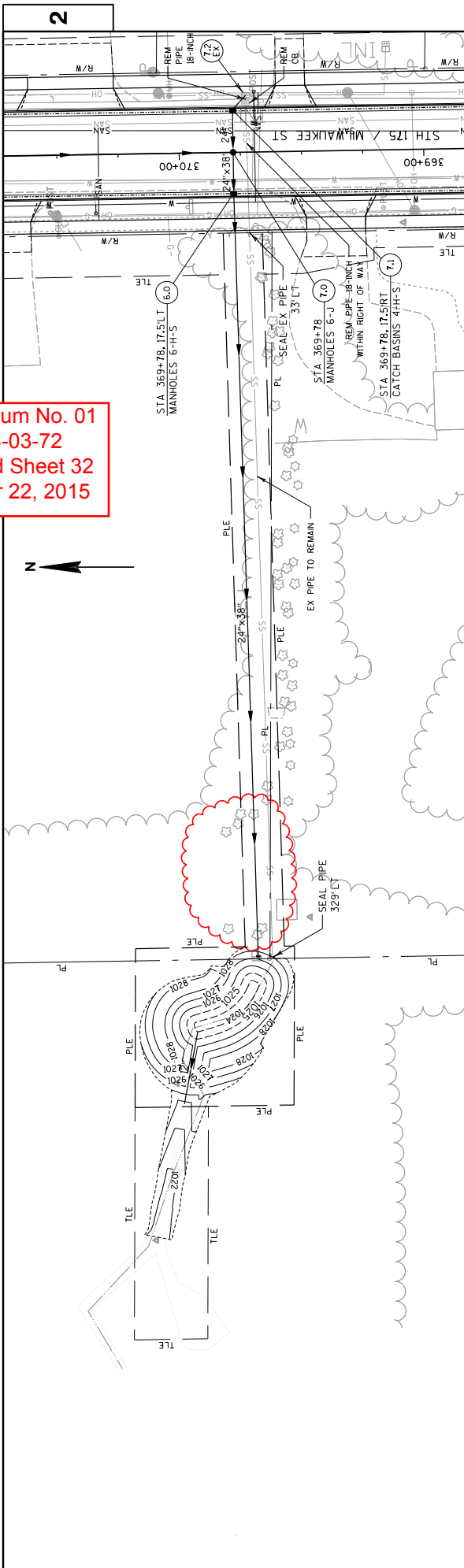
Sincerely,

*Mike Coleman*

Proposal Development Specialist  
Proposal Management Section

END OF ADDENDUM

Addendum No. 01  
 ID 3364-03-72  
 Revised Sheet 32  
 October 22, 2015



1036	1034	1032	1030	1028	1026	1024	1022	1020	1018
PROJECT NO: 3364-03-72 COUNTY: DODGE HWY: STH 175 STORM SEWER SHEET 32 E									

FILE NAME : P:\NMT\WI500TVR11-0319-102 STH 175\grph\lcs\022508\_ss.dgn  
 PLOT DATE : 10/21/2015  
 PLOT BY : g@e@s@j  
 PLOT NAME :  
 PLOT SCALE : 1:140  
 WISDOT/CADD SHEET 41

CLEANING AND GRUBBING ITEMS			
201.0110	201.0220	201.0220	201.0220
CLEARING	GRUBBING	GRUBBING	GRUBBING
CATEGORY	ROADWAY	STATION TO STATION	SY
0010	STH 175	378+50 - 379+50	--
		SUBTOTAL	48
0030	SETTLING BASIN	360	360
		SUBTOTAL	360
		TOTAL	408

REMOVING CONCRETE SIDEWALK			
204.0155	204.0155	204.0155	204.0155
ROADWAY	STATION TO STATION	O/S	SY
0010	STH 175 SW CORNER OF CHURCH AND 175	175	12.7
	STH 175 SE CORNER OF CHURCH AND 175	175	19.2
	STH 175	346+04 - 346+27	18.3
	STH 175	346+07 - 347+06	123.1
	STH 175	347+35 - 347+77	42.4
	STH 175	347+84 - 347+99	2.6
	STH 175	348+13 - 348+55	22.3
	STH 175	348+01 - 348+36	18.9
	STH 175	348+86 - 348+90	2.0
	STH 175	349+02 - 349+22	11.1
	STH 175	350+38 - 350+43	2.8
	STH 175	350+62 - 350+67	2.8
	STH 175	351+26 - 351+75	27.8
	STH 175	351+87 - 351+84	3.9
	STH 175	352+48 - 352+67	13.9
	STH 175	352+87 - 352+94	3.9
	STH 175	353+21 - 353+37	11.0
	STH 175	352+46 - 352+76	24.3
	STH 175	353+07 - 353+39	29.1
	STH 175	354+48 - 354+53	2.8
	STH 175	354+66 - 354+71	2.8
	STH 175	355+30 - 355+35	2.8
	STH 175	355+48 - 355+53	2.8
	STH 175	354+90 - 355+01	6.2
	STH 175	355+12 - 355+67	30.6
	STH 175	356+18 - 356+23	2.8
	STH 175	356+32 - 356+37	2.8
	STH 175	356+32 - 356+37	2.8
	STH 175	357+49 - 357+74	81.7
	STH 175	357+47 - 357+57	5.9
	STH 175	357+95 - 358+36	27.0
	STH 175	358+52 - 358+60	4.0
	STH 175	358+59 - 359+56	62.9
	STH 175	359+34 - 359+36	1.8
	STH 175	359+15 - 359+35	14.8
	STH 175	359+83 - 360+04	11.6
	STH 175	360+84 - 360+92	4.4
	STH 175	361+04 - 361+12	4.4
	STH 175	361+90 - 362+16	34.7
	STH 175	362+03 - 362+59	48.3
	STH 175	362+50 - 363+30	66.4
	STH 175	363+08 - 363+37	27.4
	STH 175	363+81 - 363+86	2.8
	STH 175	363+42 - 364+21	54.8
	STH 175	364+41 - 364+46	2.8
	STH 175	364+81 - 364+87	3.3
	STH 175	364+60 - 364+88	21.3
	STH 175	365+19 - 365+24	2.8
	STH 175	366+74 - 366+73	56.1
	STH 175	366+47 - 366+63	14.4
	STH 175	366+87 - 367+26	25.7
	STH 175	367+41 - 369+24	102.1
	STH 175	366+99 - 368+07	80.0
	STH 175	368+24 - 368+48	68.9
	STH 175	369+48 - 370+61	62.7
	STH 175	370+76 - 371+47	39.1
	STH 175	369+60 - 370+27	36.8
	STH 175	371+48 - 371+48	48.0
	STH 175	371+59 - 372+31	40.4
		TOTAL	1,508

REMOVING CURB AND GUTTER			
204.0150	204.0150	204.0150	204.0150
ROADWAY	STATION TO STATION	O/S	LF
0010	STH 175	346+07 - 352+77	670
	STH 175	353+06 - 362+17	911
	STH 175	362+48 - 366+65	417
	STH 175	366+98 - 372+06	508
	STH 175	346+07 - 366+98	2091
	STH 175	352+48 - 352+63	15
	STH 175	353+21 - 353+37	16
	STH 175	353+13 - 353+39	44
	STH 175	362+07 - 362+20	13
	STH 175	362+48 - 362+61	13
		TOTAL	4,688

REMOVING PAVEMENT			
204.0100	204.0100	204.0100	204.0100
ROADWAY	STATION TO STATION	O/S	SY
0010	STH 175	346+01 - 384+52	11
	STH 175	11' LT TO 11' RT	9.414
		TOTAL	9.414

SEALING PIPES			
204.0280	204.0280	204.0280	204.0280
CATEGORY	ROADWAY	STATION	O/S
0010	STH 175	369+67	329' LT
	STH 175	369+72	33' LT
		SUBTOTAL	2

BACKFILL GRANULAR			
209.0100	209.0100	209.0100	209.0100
CATEGORY	ROADWAY	STATION TO STATION	CY
0010	STH 175	347+00 - 356+00	42
		TOTAL	42

FINISHING ROADWAY			
213.0100	213.0100	213.0100	213.0100
CATEGORY	ROADWAY	PROJECT	EA
0010	ROADWAY	PROJECT	1
		TOTAL	1

MISCELLANEOUS QUANTITIES			
204.0155	204.0155	204.0155	204.0155
CATEGORY	ROADWAY	STATION TO STATION	O/S
0010	STH 175	346+01 - 384+52	11' LT TO 11' RT
	STH 175	11' LT TO 11' RT	9.414
		TOTAL	9.414

Addendum No. 01  
 ID 3364-03-72  
 Revised Sheet 51  
 October 22, 2015

STORM SEWER		STORM SEWER PIPE REINFORCED CONCRETE				STORM SEWER PIPE REINFORCED CONCRETE											
CATEGORY	ID	STATION	OFFSET	CATCH BASINS		MANHOLES		CATCH BASINS		MANHOLES		CLASS II	CLASS III	CLASS IV	CLASS HE-I	CLASS HE-II	SLOPE
				4-FT DIA	2x3-FT	4-FT DIA	6-FT DIA	MANHOLE TYPE/EA	INLET TYPE/EA	CATCH BASIN TYPE/EA	MANHOLE TYPE/EA						
0010	EX MH 346+02.4	16.2	RT														
	EX CB 346+06.5	33.5	RT														
	EX CB 346+19.9	20.5	LT														
	EX CB 346+20.4	20.5	RT														
	EX MH 348+90.0	20.5	RT														
	1.0 350+00.0	16.0	RT														
	1.1 350+00.0	20.5	LT														
	1.2 350+00.0	20.5	RT														
	EX CB 352+61.1	20.5	RT														
	EX CB 353+02.2	20.5	LT														
	EX MH 353+02.9	16.9	RT														
	EX CB 353+06.2	33.9	RT														
	EX CB 353+20.0	20.5	RT														
	2.0 (EX) 355+91.4	15.5	RT														
	2.1 355+91.4	20.5	LT														
	2.2 355+91.4	20.5	RT														
	3.0 (EX) 358+86.0	15.6	RT														
	3.1 359+35.0	20.5	LT														
	3.2 359+86.0	20.5	RT														
	EX CB 362+17.9	43.5	RT														
	EX MH 362+22.0	17.4	RT														
	EX CB 362+22.8	20.5	LT														
	EX CB 362+47.8	43.6	RT														
	EX CB 362+69.4	20.5	RT														
	4.0 363+03.0	17.0	RT														
	4.1 363+03.0	20.5	RT														
	EX CB 366+49.8	20.5	RT														
	5.0 (EX) 366+91.0	14.3	RT														
	5.1 367+12.0	20.5	LT														
	EX CB 367+12.9	20.5	RT														
	EX CB 369+72.4	23.3	RT														
	EX CB 369+72.6	20.1	RT														
	6.0 369+77.9	17.5	LT														
	7.0 369+78.0	0.0	RT														
	7.1 369+78.0	17.5	RT														
	7.2 (EX) 369+72.4	23.3	RT														
	8.0 373+11.0	0.0	RT														
	8.1 373+11.0	17.5	LT														
	8.2 373+11.0	17.5	RT														
	9.0 380+00.0	0.0	RT														
	9.1 380+00.0	17.5	LT														
	9.2 380+00.0	17.5	RT														
	10.0 382+66.0	0.0	RT														
	10.1 382+66.0	17.5	LT														
	10.2 382+66.0	17.5	RT														
	10.3 382+66.0	17.5	LT														
	10.4 382+66.0	17.5	RT														
	EX CB 383+26.0	46.1	RT														
	11.0 (EX) 383+54.5	21.7	RT														
	EX CB 383+59.6	49.5	RT														
	SUBTOTAL CATEGORY 0010		1	16	3	4	6	18	17	9							

CATEGORY	ID	STATION	OFFSET	CATCH BASINS		MANHOLES		CATCH BASINS		MANHOLES		CLASS II	CLASS III	CLASS IV	CLASS HE-I	CLASS HE-II	SLOPE
				4-FT DIA	2x3-FT	4-FT DIA	6-FT DIA	MANHOLE TYPE/EA	INLET TYPE/EA	CATCH BASIN TYPE/EA	MANHOLE TYPE/EA						
0030	SETTLING BASIN PIPE																
TOTAL				1	16	3	4	6	18	17	9						

NOTE: STRUCT DEPTH = RIM OR GRADE FLOWLINE ELEVATION - CASTING DEPTH - DISCHARGE ELEVATION; CATCH BASINS INCLUDE 2-FT SLUMP.

PROJECT NO: 3364-03-72 HWY: STH 175 COUNTY: DODGE

MISCELLANEOUS QUANTITIES

PLOT DATE : 10/21/2015

PLOT NAME : 1EW7

PLOT BY :

SHEET 57 E

WISDOT/CADD SHEET 43

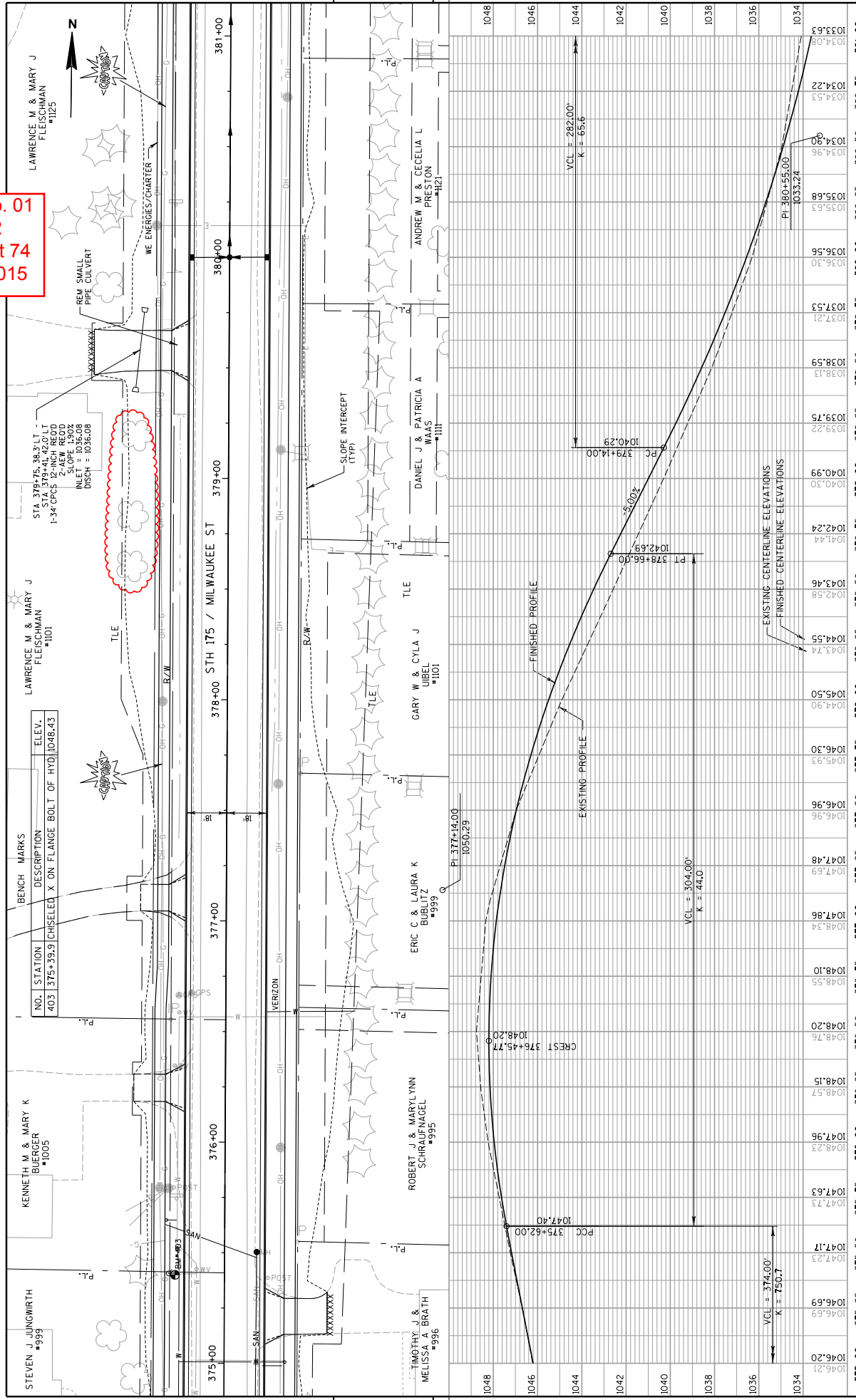
CLASS II	CLASS III	CLASS IV	CLASS HE-I	CLASS HE-II	ELEVATION		DISCH	STRUCT DEPTH	PIPE ID	FROM	TO	ELEVATION	DISCH	CLASS II		CLASS III		CLASS IV		CLASS HE-I		CLASS HE-II		SLOPE		
					LF	LF								LF	LF	LF	LF	LF	LF	LF	LF					
---	---	---	---	---	1024.00	1023.70	---	---	---	---	---	---	---	---	---	---	---	---	---	---	---	---	---	---	---	
---	---	---	---	---	1024.00	1023.70	---	---	---	---	---	---	---	---	---	---	---	---	---	---	---	---	---	---	---	---
---	---	---	---	---	1024.00	1023.70	---	---	---	---	---	---	---	---	---	---	---	---	---	---	---	---	---	---	---	---

151	72	351	96	358	8	331
30	---	---	---	---	---	---
181	72	351	96	358	8	331

1.00%

Addendum No. 01  
ID 3364-03-72  
Revised Sheet 57  
October 22, 2015

Addendum No. 01  
 ID 3364-03-72  
 Revised Sheet 74  
 October 22, 2015



PLAN & PROFILE		PLAN & PROFILE		PLAN & PROFILE		PLAN & PROFILE		PLAN & PROFILE		PLAN & PROFILE		PLAN & PROFILE		PLAN & PROFILE		PLAN & PROFILE		PLAN & PROFILE																													
STATION	ELEV.	STATION	ELEV.	STATION	ELEV.	STATION	ELEV.	STATION	ELEV.	STATION	ELEV.	STATION	ELEV.	STATION	ELEV.	STATION	ELEV.	STATION	ELEV.																												
375+00	1046.21	375+25	1046.69	375+50	1047.17	375+75	1047.63	376+00	1048.23	376+25	1048.57	376+50	1048.76	376+75	1048.10	377+00	1048.34	377+25	1047.86	377+50	1047.59	377+75	1046.96	378+00	1046.30	378+25	1044.55	378+50	1043.74	378+75	1042.58	379+00	1040.30	379+25	1039.22	379+50	1038.13	379+75	1037.21	380+00	1036.30	380+25	1035.68	380+50	1034.96	381+00	1034.08

PROJECT NO: 3364-03-72  
 HWY: STH 175  
 COUNTY: DODGE  
 FILE NAME: P:\NMT\WI\8001V11-0319-102 STH 175\graphics\050106-pp-00n

PLANT & PROFILE  
 PLOT BY: g@rsbj  
 PLOT DATE: 10/21/2015  
 PLOT SCALE: 1:140

SHEET 74  
 WSDOT/CADD SHEET 30

SCHEDULE OF ITEMS

REVISED:

CONTRACT:  
20151110003

PROJECT(S):  
3364-03-72  
3364-03-73

FEDERAL ID(S):  
WISC 2015569  
N/A

CONTRACTOR : \_\_\_\_\_

LINE NO	ITEM DESCRIPTION	APPROX. QUANTITY AND UNITS	UNIT PRICE		BID AMOUNT	
			DOLLARS	CTS	DOLLARS	CTS

SECTION 0001 Contract Items

0010	201.0110 Clearing	360.000 SY	.	.	.	.
0030	201.0210 Grubbing	360.000 SY	.	.	.	.
0040	201.0220 Grubbing	67.000 ID	.	.	.	.
0050	203.0100 Removing Small Pipe Culverts	3.000 EACH	.	.	.	.
0060	204.0100 Removing Pavement	9,414.000 SY	.	.	.	.
0070	204.0150 Removing Curb & Gutter	4,698.000 LF	.	.	.	.
0080	204.0155 Removing Concrete Sidewalk	1,508.000 SY	.	.	.	.
0090	204.0245 Removing Storm Sewer (size) 01. 18-Inch	277.000 LF	.	.	.	.
0100	204.0280 Sealing Pipes	2.000 EACH	.	.	.	.
0110	205.0100 Excavation Common	22,174.000 CY	.	.	.	.

## SCHEDULE OF ITEMS

REVISED:

CONTRACT:  
20151110003PROJECT(S):  
3364-03-72  
3364-03-73FEDERAL ID(S):  
WISC 2015569  
N/A

CONTRACTOR : \_\_\_\_\_

LINE NO	ITEM DESCRIPTION	APPROX. QUANTITY AND UNITS	UNIT PRICE		BID AMOUNT	
			DOLLARS	CTS	DOLLARS	CTS
0120	205.0501.S Excavation, Hauling, and Disposal of Petroleum Contaminated Soil	169.000 TON	.		.	
0130	209.0100 Backfill Granular	42.000 CY	.		.	
0140	213.0100 Finishing Roadway (project) 01. 3364-03-72	1.000 EACH	.		.	
0150	305.0110 Base Aggregate Dense 3/4-Inch	1,500.000 TON	.		.	
0160	305.0120 Base Aggregate Dense 1 1/4-Inch	13,190.000 TON	.		.	
0170	312.0110 Select Crushed Material	15,929.000 TON	.		.	
0180	416.0160 Concrete Driveway 6-Inch	1,345.000 SY	.		.	
0190	416.0190 Concrete Driveway 9-Inch	235.000 SY	.		.	
0200	440.4410.S Incentive IRI Ride	2,916.000 DOL	1.00000		2916.00	
0210	455.0120 Asphaltic Material PG64-28	254.000 TON	.		.	
0220	455.0605 Tack Coat	939.000 GAL	.		.	



## SCHEDULE OF ITEMS

REVISED:

CONTRACT:  
20151110003PROJECT(S):  
3364-03-72  
3364-03-73FEDERAL ID(S):  
WISC 2015569  
N/A

CONTRACTOR : \_\_\_\_\_

LINE NO	ITEM DESCRIPTION	APPROX. QUANTITY AND UNITS	UNIT PRICE		BID AMOUNT	
			DOLLARS	CTS	DOLLARS	CTS
0230	460.1101 HMA Pavement Type E-1	4,604.000 TON	.		.	
0240	460.2000 Incentive Density HMA Pavement	2,950.000 DOL	1.00000		2950.00	
0250	460.4000 HMA Cold Weather Paving	1,152.000 TON	.		.	
0260	465.0120 Asphaltic Surface Driveways and Field Entrances	49.000 TON	.		.	
0270	521.0112 Culvert Pipe Corrugated Steel 12-Inch	83.000 LF	.		.	
0280	521.1012 Apron Endwalls for Culvert Pipe Steel 12-Inch	4.000 EACH	.		.	
0290	523.0524 Apron Endwalls for Culvert Pipe Reinforced Concrete Horizontal Elliptical 24x38-Inch	1.000 EACH	.		.	
0300	601.0411 Concrete Curb & Gutter 30-Inch Type D	7,627.000 LF	.		.	
0310	601.0600 Concrete Curb Pedestrian	107.000 LF	.		.	
0320	602.0410 Concrete Sidewalk 5-Inch	24,131.000 SF	.		.	

## SCHEDULE OF ITEMS

REVISED:

CONTRACT:  
20151110003PROJECT(S):  
3364-03-72  
3364-03-73FEDERAL ID(S):  
WISC 2015569  
N/A

CONTRACTOR : \_\_\_\_\_

LINE NO	ITEM DESCRIPTION	APPROX. QUANTITY AND UNITS	UNIT PRICE		BID AMOUNT	
			DOLLARS	CTS	DOLLARS	CTS
0330	602.0515 Curb Ramp Detectable Warning Field Natural Patina	208.000 SF	.		.	
0340	602.1500 Concrete Steps	11.000 SF	.		.	
0350	606.0200 Riprap Medium	126.000 CY	.		.	
0360	608.0312 Storm Sewer Pipe Reinforced Concrete Class III 12-Inch	181.000 LF	.		.	
0370	608.0315 Storm Sewer Pipe Reinforced Concrete Class III 15-Inch	72.000 LF	.		.	
0380	608.0324 Storm Sewer Pipe Reinforced Concrete Class III 24-Inch	351.000 LF	.		.	
0390	608.0412 Storm Sewer Pipe Reinforced Concrete Class IV 12-Inch	96.000 LF	.		.	
0400	608.0415 Storm Sewer Pipe Reinforced Concrete Class IV 15-Inch	358.000 LF	.		.	
0410	608.0418 Storm Sewer Pipe Reinforced Concrete Class IV 18-Inch	8.000 LF	.		.	
0420	610.0124 Storm Sewer Pipe Reinforced Concrete Horizontal Elliptical Class HE-III 24x38-Inch	331.000 LF	.		.	

## SCHEDULE OF ITEMS

REVISED:

CONTRACT:  
20151110003PROJECT(S):  
3364-03-72  
3364-03-73FEDERAL ID(S):  
WISC 2015569  
N/A

CONTRACTOR : \_\_\_\_\_

LINE NO	ITEM DESCRIPTION	APPROX. QUANTITY AND UNITS	UNIT PRICE		BID AMOUNT	
			DOLLARS	CTS	DOLLARS	CTS
0430	611.0530 Manhole Covers Type J	6.000 EACH	.		.	
0440	611.0639 Inlet Covers Type H-S	18.000 EACH	.		.	
0450	611.1004 Catch Basins 4-FT Diameter	1.000 EACH	.		.	
0460	611.1230 Catch Basins 2x3-FT	16.000 EACH	.		.	
0470	611.2004 Manholes 4-FT Diameter	3.000 EACH	.		.	
0480	611.2006 Manholes 6-FT Diameter	4.000 EACH	.		.	
0490	611.8105 Adjusting Catch Basin Covers	17.000 EACH	.		.	
0500	611.8110 Adjusting Manhole Covers	9.000 EACH	.		.	
0510	619.1000 Mobilization	1.000 EACH	.		.	
0520	624.0100 Water	295.000 MGAL	.		.	
0530	625.0100 Topsoil	7,900.000 SY	.		.	

## SCHEDULE OF ITEMS

REVISED:

CONTRACT:  
20151110003PROJECT(S):  
3364-03-72  
3364-03-73FEDERAL ID(S):  
WISC 2015569  
N/A

CONTRACTOR : \_\_\_\_\_

LINE NO	ITEM DESCRIPTION	APPROX. QUANTITY AND UNITS	UNIT PRICE		BID AMOUNT	
			DOLLARS	CTS	DOLLARS	CTS
0540	627.0200 Mulching	4,450.000 SY	.		.	
0550	628.1504 Silt Fence	2,107.000 LF	.		.	
0560	628.1520 Silt Fence Maintenance	2,107.000 LF	.		.	
0570	628.1905 Mobilizations Erosion Control	11.000 EACH	.		.	
0580	628.1910 Mobilizations Emergency Erosion Control	6.000 EACH	.		.	
0590	628.7005 Inlet Protection Type A	9.000 EACH	.		.	
0600	628.7015 Inlet Protection Type C	9.000 EACH	.		.	
0610	628.7020 Inlet Protection Type D	25.000 EACH	.		.	
0620	628.7504 Temporary Ditch Checks	48.000 LF	.		.	
0630	628.7555 Culvert Pipe Checks	11.000 EACH	.		.	
0640	628.7570 Rock Bags	71.000 EACH	.		.	

## SCHEDULE OF ITEMS

REVISED:

CONTRACT:  
20151110003PROJECT(S):  
3364-03-72  
3364-03-73FEDERAL ID(S):  
WISC 2015569  
N/A

CONTRACTOR : \_\_\_\_\_

LINE NO	ITEM DESCRIPTION	APPROX. QUANTITY AND UNITS	UNIT PRICE		BID AMOUNT	
			DOLLARS	CTS	DOLLARS	CTS
0650	629.0205 Fertilizer Type A	11.000 CWT	.		.	
0660	630.0130 Seeding Mixture No. 30	80.000 LB	.		.	
0670	631.0300 Sod Water	180.000 MGAL	.		.	
0680	631.1000 Sod Lawn	7,900.000 SY	.		.	
0690	634.0614 Posts Wood 4x6-Inch X 14-FT	7.000 EACH	.		.	
0700	634.0616 Posts Wood 4x6-Inch X 16-FT	17.000 EACH	.		.	
0710	634.0618 Posts Wood 4x6-Inch X 18-FT	4.000 EACH	.		.	
0720	634.0620 Posts Wood 4x6-Inch X 20-FT	3.000 EACH	.		.	
0730	637.2210 Signs Type II Reflective H	197.060 SF	.		.	
0740	637.2230 Signs Type II Reflective F	90.000 SF	.		.	
0750	638.2602 Removing Signs Type II	29.000 EACH	.		.	

## SCHEDULE OF ITEMS

REVISED:

CONTRACT:  
20151110003PROJECT(S):  
3364-03-72  
3364-03-73FEDERAL ID(S):  
WISC 2015569  
N/A

CONTRACTOR : \_\_\_\_\_

LINE NO	ITEM DESCRIPTION	APPROX. QUANTITY AND UNITS	UNIT PRICE		BID AMOUNT	
			DOLLARS	CTS	DOLLARS	CTS
0760	638.3000 Removing Small Sign Supports	29.000 EACH	.		.	
0770	642.5001 Field Office Type B	1.000 EACH	.		.	
0780	643.0200 Traffic Control Surveillance and Maintenance (project) 01. 3364-03-72	320.000 DAY	.		.	
0790	643.0420 Traffic Control Barricades Type III	8,960.000 DAY	.		.	
0800	643.0705 Traffic Control Warning Lights Type A	10,240.000 DAY	.		.	
0810	643.0900 Traffic Control Signs	7,680.000 DAY	.		.	
0820	643.1050 Traffic Control Signs PCMS	14.000 DAY	.		.	
0830	643.2000 Traffic Control Detour (project) 01. 3364-03-72	1.000 EACH	.		.	
0840	643.3000 Traffic Control Detour Signs	48,320.000 DAY	.		.	
0850	644.1430.S Temporary Pedestrian Surface Plate	1,275.000 SF	.		.	

## SCHEDULE OF ITEMS

REVISED:

CONTRACT:  
20151110003PROJECT(S):  
3364-03-72  
3364-03-73FEDERAL ID(S):  
WISC 2015569  
N/A

CONTRACTOR : \_\_\_\_\_

LINE NO	ITEM DESCRIPTION	APPROX. QUANTITY AND UNITS	UNIT PRICE		BID AMOUNT	
			DOLLARS	CTS	DOLLARS	CTS
0860	644.1601.S Temporary Curb Ramp	16.000 EACH	.		.	
0870	644.1616.S Temporary Pedestrian Safety Fence	3,000.000 LF	.		.	
0880	645.0130 Geotextile Fabric Type R	307.000 SY	.		.	
0890	646.0106 Pavement Marking Epoxy 4-Inch	12,650.000 LF	.		.	
0900	646.0600 Removing Pavement Markings	230.000 LF	.		.	
0910	647.0566 Pavement Marking Stop Line Epoxy 18-Inch	93.000 LF	.		.	
0920	647.0796 Pavement Marking Crosswalk Epoxy 24-Inch	1,630.000 LF	.		.	
0930	648.0100 Locating No-Passing Zones	0.730 MI	.		.	
0940	650.4000 Construction Staking Storm Sewer	49.000 EACH	.		.	
0950	650.4500 Construction Staking Subgrade	3,851.000 LF	.		.	
0960	650.5000 Construction Staking Base	3,851.000 LF	.		.	

## SCHEDULE OF ITEMS

REVISED:

CONTRACT:  
20151110003PROJECT(S):  
3364-03-72  
3364-03-73FEDERAL ID(S):  
WISC 2015569  
N/A

CONTRACTOR : \_\_\_\_\_

LINE NO	ITEM DESCRIPTION	APPROX. QUANTITY AND UNITS	UNIT PRICE		BID AMOUNT	
			DOLLARS	CTS	DOLLARS	CTS
0970	650.5500 Construction Staking Curb Gutter and Curb & Gutter	7,728.000 LF	.		.	
0980	650.6000 Construction Staking Pipe Culverts	2.000 EACH	.		.	
0990	650.9910 Construction Staking Supplemental Control (project) 01. 3364-03-72	LUMP	LUMP		.	
1000	650.9920 Construction Staking Slope Stakes	3,851.000 LF	.		.	
1010	690.0150 Sawing Asphalt	525.000 LF	.		.	
1020	690.0250 Sawing Concrete	850.000 LF	.		.	
1030	ASP.1T0A On-the-Job Training Apprentice at \$5.00/HR	700.000 HRS	5.00000		3500.00	
1040	ASP.1T0G On-the-Job Training Graduate at \$5. 00/HR	400.000 HRS	5.00000		2000.00	
1050	SPV.0045 Special 01. Temporary Crosswalk	1,650.000 DAY	.		.	
1060	SPV.0060 Special 01. Abandon Sanitary Manhole	2.000 EACH	.		.	



## SCHEDULE OF ITEMS

REVISED:

CONTRACT:  
20151110003PROJECT(S):  
3364-03-72  
3364-03-73FEDERAL ID(S):  
WISC 2015569  
N/A

CONTRACTOR : \_\_\_\_\_

LINE NO	ITEM DESCRIPTION	APPROX. QUANTITY AND UNITS	UNIT PRICE		BID AMOUNT	
			DOLLARS	CTS	DOLLARS	CTS
1070	SPV.0060 Special 02. Remove Hydrant	6.000 EACH	.		.	
1080	SPV.0060 Special 03. Valve and Box, 6-Inch	1.000 EACH	.		.	
1090	SPV.0060 Special 04. Valve and Box, 8-Inch	2.000 EACH	.		.	
1100	SPV.0060 Special 05. Valve and Box, 12-Inch	7.000 EACH	.		.	
1110	SPV.0060 Special 06. Water Services 1-Inch Curb Stop and Stop Box	61.000 EACH	.		.	
1120	SPV.0060 Special 07. Water Services 1-Inch Tap and Corporation	61.000 EACH	.		.	
1130	SPV.0060 Special 08. Sanitary Sewer Manhole Casting	10.000 EACH	.		.	
1140	SPV.0060 Special 09. Hydrant	6.000 EACH	.		.	
1150	SPV.0060 Special 15. Construction Staking Curb Ramps	23.000 EACH	.		.	
1160	SPV.0090 Special 02. Hydrant Lead, 6-Inch PVC	32.000 LF	.		.	
1170	SPV.0090 Special 03. Water Main, 6-Inch PVC	4.000 LF	.		.	

## SCHEDULE OF ITEMS

REVISED:

CONTRACT:  
20151110003PROJECT(S):  
3364-03-72  
3364-03-73FEDERAL ID(S):  
WISC 2015569  
N/A

CONTRACTOR : \_\_\_\_\_

LINE NO	ITEM DESCRIPTION	APPROX. QUANTITY AND UNITS	UNIT PRICE		BID AMOUNT	
			DOLLARS	CTS	DOLLARS	CTS
1180	SPV.0090 Special 04. Water Main, 8-Inch PVC	89.000 LF	.		.	
1190	SPV.0090 Special 05. Water Main, 12-Inch PVC	2,870.000 LF	.		.	
1200	SPV.0090 Special 06. Water Main, 12-Inch DI	115.000 LF	.		.	
1210	SPV.0090 Special 07. Water Service, 1-Inch Poly	1,415.000 LF	.		.	
1220	SPV.0090 Special 08. Sanitary Lateral, 6-Inch PVC	1,481.000 LF	.		.	
1230	SPV.0090 Special 09. Sanitary Sewer, 10-Inch PVC	2,968.000 LF	.		.	
1240	SPV.0090 Special 10. Abandon Sanitary Sewer	623.000 LF	.		.	
1250	SPV.0090 Special 11. Water Service, 1-Inch Copper	46.000 LF	.		.	
1260	SPV.0090 Special 12. Water Main, 8-Inch DI	20.000 LF	.		.	
1270	SPV.0090 Special 20. Pipe Underdrain 6-Inch Special	7,627.000 LF	.		.	
1280	SPV.0180 Special 01. Insulation 2-Inch	47.000 SY	.		.	

SCHEDULE OF ITEMS

REVISED:

CONTRACT:  
20151110003

PROJECT(S):  
3364-03-72  
3364-03-73

FEDERAL ID(S):  
WISC 2015569  
N/A

CONTRACTOR : \_\_\_\_\_

LINE NO	ITEM DESCRIPTION	APPROX. QUANTITY AND UNITS	UNIT PRICE		BID AMOUNT	
			DOLLARS	CTS	DOLLARS	CTS
1290	SPV.0180 Special 02. Geogrid Reinforcement	19,784.000 SY	.		.	
1300	SPV.0200 Special 01. Sanitary Manhole 48-Inch	103.060 VF	.		.	
	SECTION 0001 TOTAL				.	
	TOTAL BID				.	