

# Wisconsin Department of Transportation

December 4, 2015

## Division of Transportation Systems Development

Bureau of Project Development  
4802 Sheboygan Avenue, Rm 601  
P O Box 7916  
Madison, WI 53707-7916

Telephone: (608) 266-1631  
Facsimile (FAX): (608) 266-8459

### NOTICE TO ALL CONTRACTORS:

**Proposal #6: 5992-08-85, WISC 2015 635  
Lower Yahara River Trail Phase One  
Capital City Trail to McDaniel Park  
Non Highway  
Dane County**

### Letting of December 8, 2015

This is Addendum No. 03, which provides for the following:

#### Plan Sheets

Revised Plan Sheets	
Plan Sheet	Plan Sheet Title (brief description of changes to sheet)
6	Construction Details – Modified composite decking call out and notes.
7	Construction Details – Modified composite decking call out and notes.
90	Structure B-13-811, Cross Sections, General Notes and Quantities – Modified general notes for composite decking.
94	Structure B-13-811, Abutment Details and Bill of Bars - Modified composite decking dimension call out.
102	Structure B-13-834, Cross Sections, General Notes and Quantities – Modified general notes for composite decking.
105	Structure B-13-834, Abutment General - Modified composite decking dimension call out.
107	Structure B-13-834, Truss Details – Removed composite decking note.

#### Plan Sheets

The following 8½ x 11-inch sheets are attached and made part of the plans for this proposal:

Revised: 6, 7, 90, 94, 102, 105 & 107

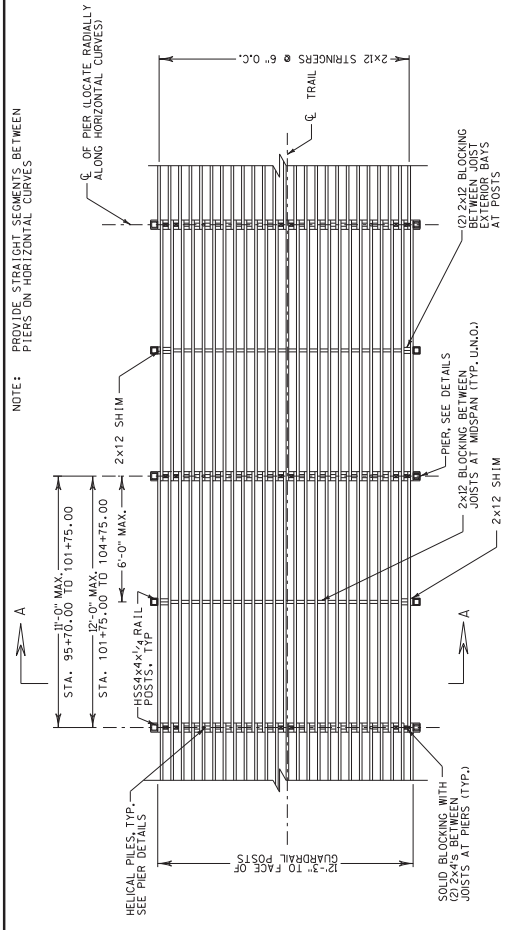
The responsibility for notifying potential subcontractors and suppliers of these changes remains with the prime contractor.

Sincerely,

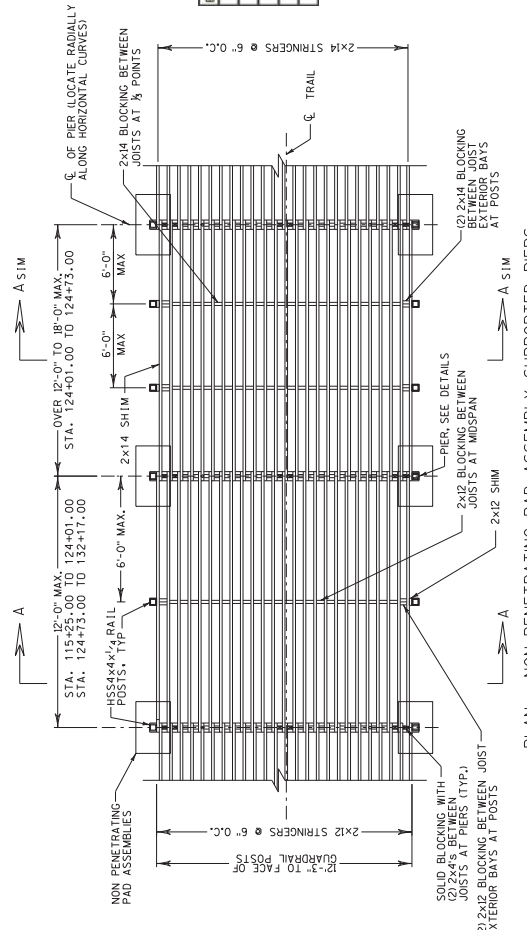
*Mike Coleman*

Proposal Development Specialist  
Proposal Management Section

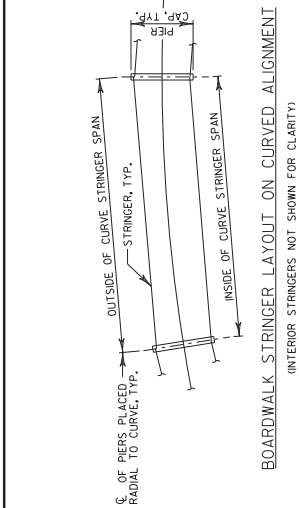
END OF ADDENDUM



PLAN - HELICAL PILE SUPPORTED PIERS

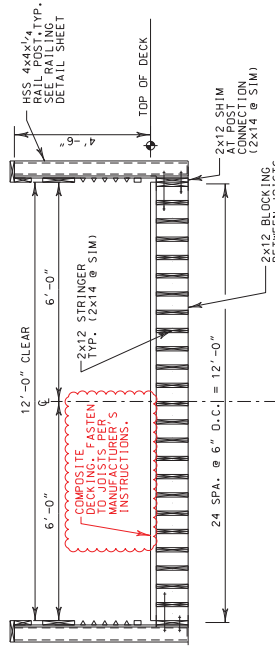


PLAN - NON-PENETRATING PAD ASSEMBLY SUPPORTED PIERS



BOARDWALK STRINGER LAYOUT ON CURVED ALIGNMENT

INTERIOR STRINGERS NOT SHOWN FOR CLARITY



SECTION A-A  
WETLAND BOARDWALK SECTION

Addendum No. 03  
ID 5992-08-85  
Revised Sheet 6  
December 4, 2015

BOARDWALK TOTAL ESTIMATED QUANTITIES BILL OF TIMBER - ONE SPAN

BID ITEM NUMBER	BID ITEM	UNIT	TOTAL
507.0200	TREATED LUMBER AND TIMBER	MBM	186.4
SPV.0060.01	HELICAL PILE	EACH	256
SPV.0060.02	NON-PENETRATING PAD ASSEMBLY	EACH	278
SPV.0090.01	RAILING SYSTEM FOR ELEVATED BOARDWALK	LF	5,192
SPV.0165.01	COMPOSITE DECKING	SF	31,788

SIZE	NO. REQ'D.	APPROXIMATE LENGTH	DESCRIPTION
2" X 12"	25	11'-6"	STRINGERS STA. 95+70 TO 104+75
2" X 12"	25	12'-6"	STRINGERS STA. 101+75 TO 104+75
2" X 12"	25	12'-9"	STRINGERS STA. 115+25 TO 124+01 AND STA. 124+73 TO 132+17
2" X 14"	25	VARIES 14'-0" TO 19'-0"	STRINGERS STA. 124+01 TO 124+73
2" X 12"	4	16'-10"	PIER P1
2" X 12"	4	14'-0"	PIER P2
2" X 12"	8	14'-0"	PIER P4
2" X 12"	26	4-1/2"	MIDSPAN BLOCKING
2" X 14"	52	4-1/2"	1/3 POINT BLOCKING
2" X 12"	1	11"	MIDSPAN POST SHIM
2" X 12"	2	11"	1/3 POINT POST SHIM
2" X 4"	48	11'-1/4"	PIER SOLID BLOCKING

DESIGN DATA

LIVE LOAD:  
VEHICLE DESIGN LOAD: H-5  
PEDESTRIAN DESIGN LOAD: 90 PSF

GENERAL NOTES:

1. ALL LUMBER SHALL BE NO. 1 SOUTHERN PINE.

NOTE REMOVED

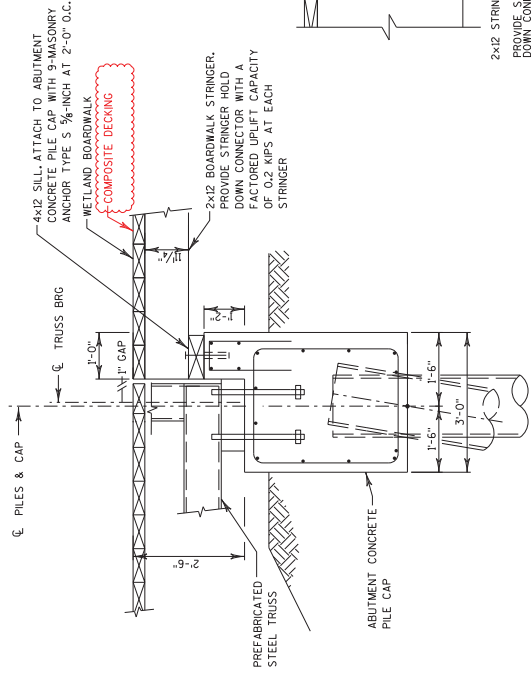
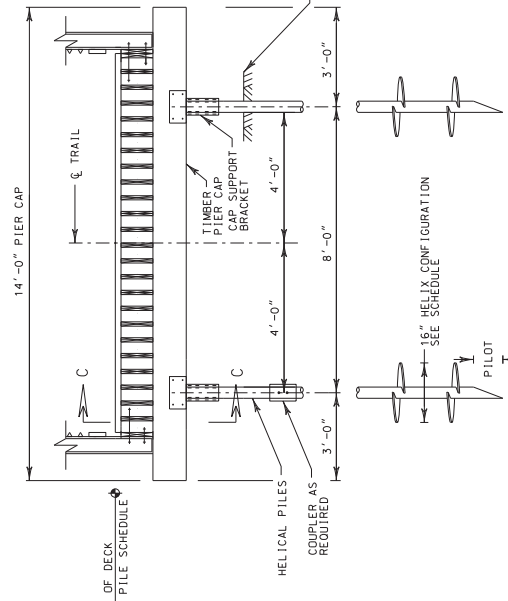
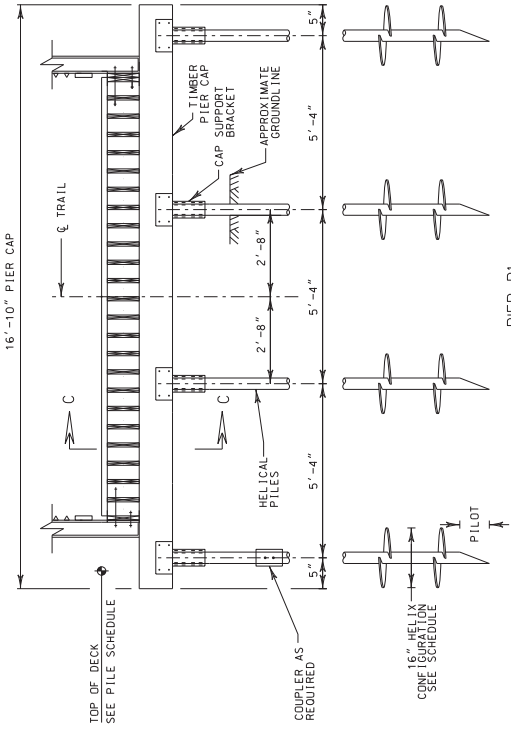
CONSTRUCTION DETAILS

COUNTY: DANE

HWY: YAHARA RIVER TRAIL

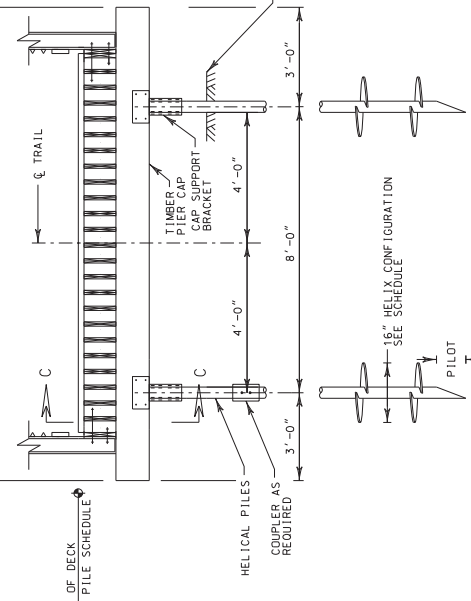
PROJECT NO: 5992-08-85

SHEET 6



BOARDWALK SECTION

AT STATIONS 95+70.00, 104+75.00, AND 105+25.00



SECTION C-C

NOTES

- BOARDWALK PIERS FROM STA. 95+81.00 TO 100+98.00 TO BE SUPPORTED BY 16" HELIX PILES INSTALLED TO A MINIMUM ULTIMATE AXIAL RESISTANCE OF 5.5 TONS\*\* PER PILE, ESTIMATED 10-FT LONG.
- BOARDWALK PIERS FROM STA. 101+09.00 TO 104+63.00 TO BE SUPPORTED ON 16" HELIX PILES INSTALLED TO A MINIMUM ULTIMATE AXIAL RESISTANCE OF 4.5 TONS\*\* PER PILE, ESTIMATED 15-FT LONG.
- \*\* THE FACTORED AXIAL RESISTANCE OF PILES IN COMPRESSION USED FOR THE DESIGN IS THE REQUIRED ULTIMATE AXIAL RESISTANCE MULTIPLIED BY A RESISTANCE FACTOR OF 0.5.
- SEE SPECIAL PROVISIONS FOR COMPOSITE DECK THICKNESS, GENERAL CONTRACTOR AND TRUSS MANUFACTURER TO COORDINATE COMPOSITE DECKING WITH WETLAND BOARDWALK.

Addendum No. 03  
ID 5992-08-85  
Revised Sheet 7  
December 4, 2015

Addendum No. 03  
 ID 5992-08-85  
 Revised Sheet 90  
 December 4, 2015

STATE PROJECT NUMBER  
 5992-08-85

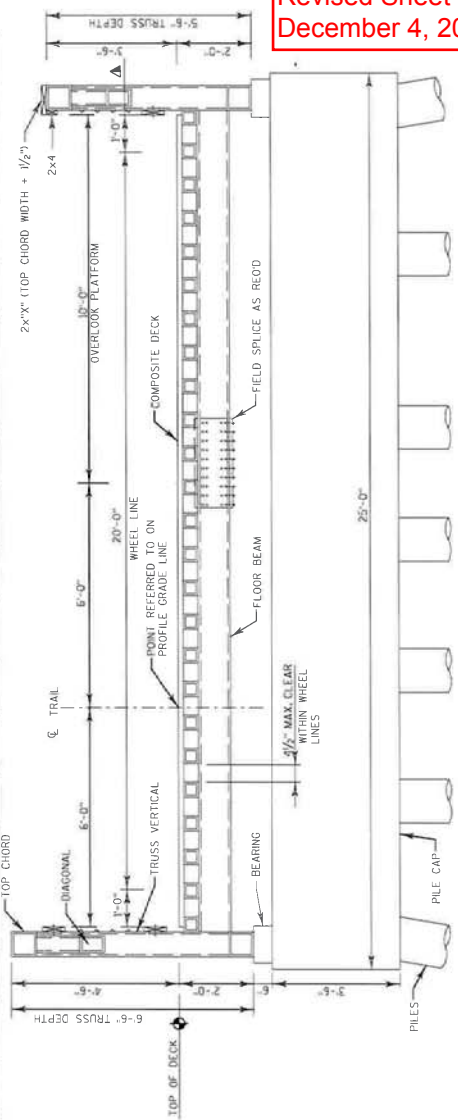
TOTAL ESTIMATED QUANTITIES

BID ITEM NUMBER	BID ITEM	UNIT	W. ABUT.	PIER 1	PIER 2	PIER 3	PIER 4	PIER 5	PIER 6	PIER 7	PIER 8	PIER 9	PIER 10R	PIER 11	PIER 12R	PIER 13	PIER 14	PIER 15	PIER 16	PIER 17	PIER 18	PIER 19	E. ABUT.	SUPER	TOTAL
206.1000	EXCAVATION FOR STRUCTURES BRIDGES B-13-811	LS	-	-	-	-	-	-	-	-	-	-	-	-	-	-	-	-	-	-	-	-	-	-	1
210.0100	BACKFILL STRUCTURE	CY	33	-	-	-	-	-	-	-	-	-	-	-	-	-	-	-	-	-	-	-	-	-	33
502.0100	CONCRETE MASONRY BRIDGES	CY	8	6	6	6	6	6	6	6	6	6	6	6	6	6	6	6	6	6	6	6	6	6	154
502.0105	MASONRY ANCHORS TYPE S 5/8-INCH	EACH	8	-	-	-	-	-	-	-	-	-	-	-	-	-	-	-	-	-	-	-	-	-	8
505.0100	BAR STEEL REINFORCEMENT STRUCTURES	LB	70	50	50	50	60	60	70	110	110	90	90	80	50	90	90	2400	1160	2020	2020	1070	740	-	37850
505.0400	BAR STEEL REINFORCEMENT HS STRUCTURES	LB	1140	1240	1330	1370	1540	1500	2990	2990	3530	3190	1160	2400	2400	2400	2400	2400	2400	2020	2020	1070	740	-	14030
505.0600	BAR STEEL REINFORCEMENT HS COATED STRUCTURES	LB	860	540	540	540	540	540	540	890	890	620	500	620	500	890	890	890	890	540	890	540	730	-	0.40
507.0200	TREATED LUMBER AND TIMBER	M3BM	0.4	-	-	-	-	-	-	-	-	-	-	-	-	-	-	-	-	-	-	-	-	-	0.40
550.2104	PIPING CIP CONCRETE 18" Ø 25'-INCH	LF	260	200	200	200	200	200	200	350	420	450	510	450	360	630	630	380	380	665	665	360	360	-	8070
506.8005-S	PREFABRICATED STEEL TRUSS PEDESTRIAN BRIDGE B-13-811 LRFD	LS	-	-	-	-	-	-	-	-	-	-	-	-	-	-	-	-	-	-	-	-	-	-	1

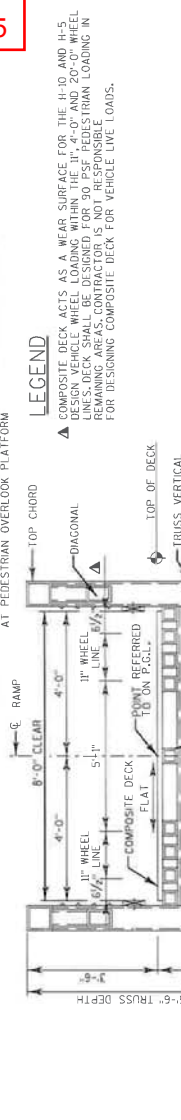
GENERAL NOTES

- DRAWINGS SHALL NOT BE SCALED.
- ALL STATIONS AND ELEVATIONS ARE IN FEET.
- THE FIRST DIGIT OF A THREE DIGIT AND THE FIRST TWO DIGITS OF A FOUR DIGIT BAR MARK SIGNIFIES THE BAR SIZE.
- BEVEL EXPOSED EDGES OF CONCRETE 3/4" UNLESS OTHERWISE NOTED.
- ALL DETAILS MATERIALS AND FABRICATION SHALL CONFORM TO THE CURRENT EDITION OF THE STANDARD SPECIFICATIONS FOR HIGHWAY AND STRUCTURE SPECIFICATIONS OF THE STATE OF WISCONSIN DEPARTMENT OF TRANSPORTATION.
- THE EXISTING GROUNDLINE SHALL BE THE UPPER LIMITS OF EXCAVATION FOR STRUCTURES.
- AT THE BACKFACE OF THE ABUTMENT ALL VOLUME WHICH CANNOT BE PLACED BEFORE ABUTMENT CONSTRUCTION AND IS NOT OCCUPIED BY THE NEW STRUCTURE SHALL BE BACK-FILLED WITH STRUCTURE BACKFILL.
- BAR STEEL REINFORCEMENT SHALL BE EMBEDDED 2" CLEAR UNLESS OTHERWISE NOTED.
- APPLY BRIDGE SEAT PROTECTION, AS SPECIFIED IN SECTION 502.312 OF THE STANDARD SPECIFICATIONS, TO THE TOP SURFACE OF THE PIERS.
- THE TRUSS SHALL BE ANCHORED TO THE PIERS IN A MANNER TO ALLOW THERMAL MOVEMENTS OF THE SUPERSTRUCTURE ALONG THE CENTERLINE OF THE PATH AND TO PREVENT MOVEMENT PERPENDICULAR TO THE CENTERLINE OF THE PATH.
- THE APPEARANCE OF THE TRUSSES SHALL CLOSELY RESEMBLE WHAT IS SHOWN IN THE ELEVATION VIEW ON SHEETS 11 AND 12.
- BEARING ANCHOR BOLTS, COMPOSITE DECKING, STEEL RAILS, TIMBER RUB RAILS & TOE PLATES ARE INCLUDED IN BID ITEM "PREFABRICATED STEEL TRUSS PEDESTRIAN BRIDGE, B-13-811LRD".
- ALL WOOD SHALL BE PRESSURE TREATED TO AMPA ACZA PER CURRENT STATE AND/OR MASHITO SPECIFICATIONS. WOOD SPECIES SHALL BE STATED IN "507.2.2.2 OF STANDARD SPECIFICATIONS.
- ALL TRUSSES SHALL BE DESIGNED AS SIMPLE SPANS BETWEEN PIERS.
- EXPOSED STEEL PILE SHELLS SHALL BE PAINTED IN ACCORDANCE WITH SECTION 550.3.11.3 OF THE STANDARD SPECIFICATIONS. COLOR SHALL BE FEDERAL STANDARD 595B COLORS #7030 FLAT BLACK.

SEE SPECIAL PROVISIONS FOR COMPOSITE DECK, 4 1/2" MAX CLEAR WITHIN WHEEL LINES AND 15'-0" CLEAR OVER THE COMPOSITE DECK. INCREASE CLEAR AND APPLY FOR CONSISTENCY WITH WETLAND BOARDWALK DESIGN.



SECTION THRU THRU PREFABRICATED STEEL TRUSS AT PEDESTRIAN OVERLOOK PLATFORM



SECTION THRU THRU PREFABRICATED STEEL TRUSS AT FISHING PLATFORM RAMP

BENCH MARKS

NO.	STATION	NORTHING	EASTING	DESCRIPTION	ELEV.
BM 1	137+51.6, 32 RT	465,348.01	84,636.03	MAC NAIL ON WEST SIDE OF MCDANIEL PARK PARKING LOT	850.16
BM 2	N/A	465,184.30	842,030.78	MAC NAIL ON NORTH SIDE OF ERLING AVENUE	856.38



*William C. Dehn*  
 12/04/15

TYPICAL SECTION THROUGH PRE-FABRICATED STEEL TRUSS

AT FISHING PLATFORM RAMP

REVISION	BY
GENERAL NOTE REVISION	ACW
STATE OF WISCONSIN	DEPARTMENT OF TRANSPORTATION
STRUCTURE B-13-811	
DRAWN BY	PLANS CDR. JML
CROSS SECTION, GENERAL NOTES AND QUANTITIES	SHEET 2 OF 12
90	

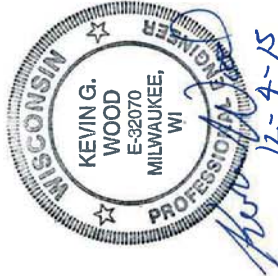
**NOTES**

ALL TIMBER CONNECTORS AND HARDWARE EXCEPT THOSE OF MALLEABLE IRON SHALL BE GALVANIZED.  
 105% ALL LUMBER AND TIMBER WITH ONE OF THE PRESERVATIVES RECOMMENDED IN THE STANDARD SPECIFICATIONS.  
 ALL NUTS, WASHERS, TIMBER CONNECTORS AND HARDWARE SHALL BE INCLUDED IN THE COST FOR "TREATED LUMBER AND TIMBER".

**FOUNDATION DATA**

ABUTMENTS TO BE SUPPORTED ON 14" Ø, 0.25" WALL THICKNESS CAST-IN-PLACE CONCRETE PILES DRIVEN TO A MINIMUM DRIVING RESISTANCE OF 25 TONS PER PILE AT ABUTMENTS AS DETERMINED BY THE MODIFIED GATES DYNAMIC FORMULA. ESTIMATED LENGTHS:  
 WEST ABUTMENT = 50'  
 EAST ABUTMENT = 50'

*William C. Decker* <sup>SDR</sup>  
12/04/15



**LEGEND**

ANCHOR RODS SUPPLIED BY PREFABRICATED STEEL TRUSS MANUFACTURER. CONTRACTOR TO VERIFY LOCATION AND PROJECTION WITH TRUSS MANUFACTURER

NO.	DATE	REVISION	BY
1		COMPOSITE DECK NOTE REVISION	KGM

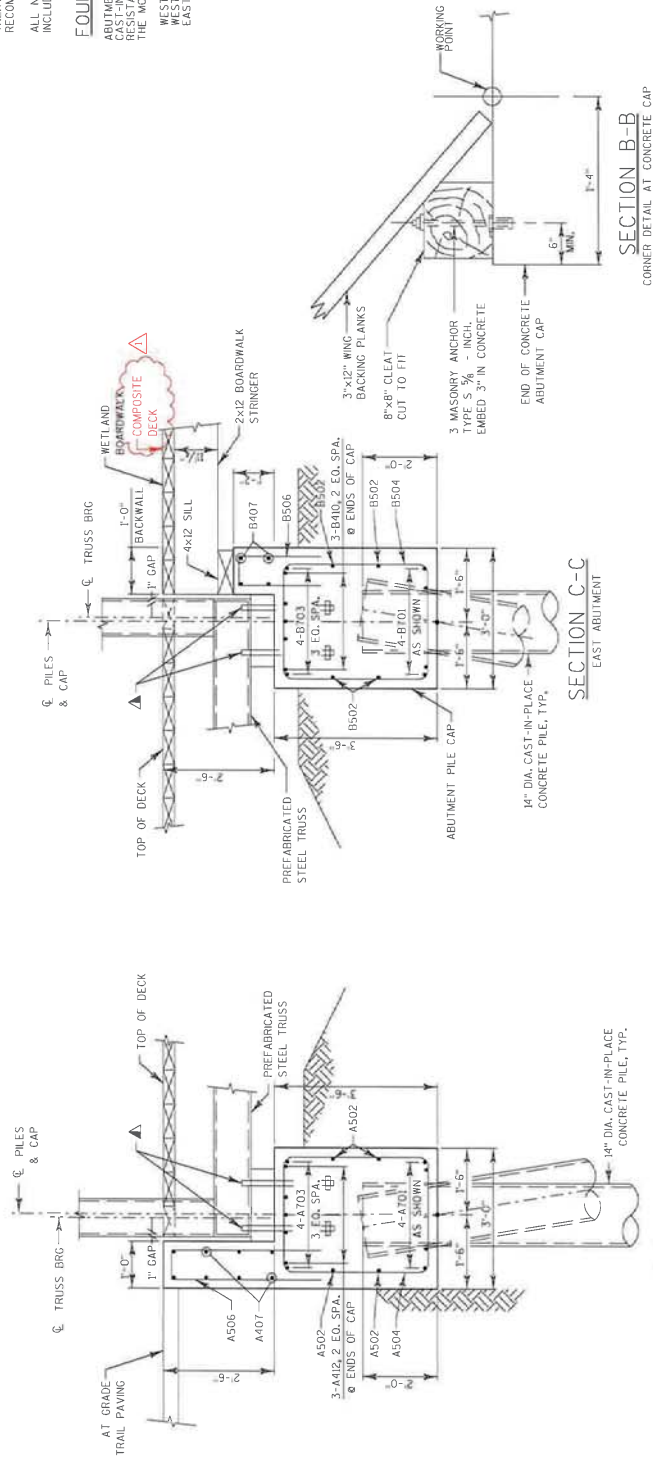
STATE OF WISCONSIN  
DEPARTMENT OF TRANSPORTATION

STRUCTURE B-13-811

DRAWN BY: RSH  
PLANS CDR: AML

ABUTMENT DETAILS AND BILL OF BARS  
SHEET 6 OF 12  
94

Addendum No. 03  
ID 5992-08-85  
Revised Sheet 94  
December 4, 2015



WEST ABUTMENT - BILL OF BARS				EAST ABUTMENT - BILL OF BARS			
MARK	COATED	NO. REQD	LENGTH	BAR SERIES	BENT	LOCATION	
A701	X	4	16'-0"			ABUTMENT CAP BOTTOM LONGITUDINAL	
A502	X	4	16'-0"			ABUTMENT CAP MIDDLE LONGITUDINAL	
A703	X	4	16'-0"			ABUTMENT CAP TOP LONGITUDINAL	
A504	X	18	12'-0"			ABUTMENT CAP STIRRUPS	
A505	X	4	5'-11"			ABUTMENT CAP ENDS HORIZONTAL	
A407	X	8	16'-3"			BACKWALL VERTICAL - WEST ABUTMENT	
A708	X	8	16'-0"			BACKWALL HORIZONTAL - ABUTMENT	
A309		32	10'-5"			PILE TIE - ABUTMENT	
A610		32	9'-6"			PILE LONGITUDINAL - ABUTMENT WINGWALLS	
A311		20	4'-2"			PILE TIE - ABUTMENT WINGWALLS	
A412	X	6	2'-11"			ABUTMENT CAP ENDS	

WEST ABUTMENT				EAST ABUTMENT			
MARK	COATED	NO. REQD	LENGTH	BAR SERIES	BENT	LOCATION	
B701	X	4	16'-0"			ABUTMENT CAP BOTTOM LONGITUDINAL	
B502	X	4	16'-0"			ABUTMENT CAP MIDDLE LONGITUDINAL	
B703	X	4	16'-0"			ABUTMENT CAP TOP LONGITUDINAL	
B504	X	18	12'-0"			ABUTMENT CAP STIRRUPS	
B505	X	4	5'-11"			ABUTMENT CAP ENDS HORIZONTAL	
B407	X	17	5'-7"			BACKWALL VERTICAL - ABUTMENT	
B708	X	4	16'-0"			BACKWALL HORIZONTAL	
B309		32	11'-3"			PILE LONGITUDINAL	
B309		24	4'-2"			PILE TIE	
B410	X	6	2'-11"			ABUTMENT CAP ENDS	

**GENERAL NOTES**

DRAWINGS SHALL NOT BE SCALED.  
 ALL STATIONS AND ELEVATIONS ARE IN FEET.  
 THE FIRST DIGIT OF A THREE-DIGIT AND THE FIRST TWO DIGITS OF A FOUR-DIGIT BAR MARK SIGNIFIES THE BAR SIZE.  
 REVEAL EXPOSED EDGES OF CONCRETE 3/4" UNLESS OTHERWISE NOTED.  
 ALL DETAILS MATERIALS AND FABRICATION SHALL CONFORM TO THE CURRENT EDITION OF THE STANDARD SPECIFICATIONS FOR HIGHWAY AND STRUCTURE SPECIFICATIONS OF THE STATE OF WISCONSIN DEPARTMENT OF TRANSPORTATION.  
 THE EXISTING GROUNDLINE SHALL BE THE UPPER LIMITS OF EXCAVATION FOR STRUCTURES.  
 AT THE BACKFACE OF THE ABUTMENT ALL VOLUME WHICH CANNOT BE PLACED BEFORE ABUTMENT CONSTRUCTION AND IS NOT OCCUPIED BY THE NEW STRUCTURE SHALL BE BACKFILLED WITH STRUCTURE BACKFILL.  
 BAR STEEL REINFORCEMENT SHALL BE EMBEDDED 2" CLEAR UNLESS OTHERWISE NOTED.  
 APPLY BRIDGE SEAT PROTECTION AS SPECIFIED IN SECTION 509.31.2 OF THE STANDARD SPECIFICATIONS TO THE TOP SURFACE OF THE PIERS AND ABUTMENTS.  
 THE TRUSS SHALL BE ANCHORED TO THE PIERS IN A MANNER TO ALLOW THERMAL MOVEMENTS OF THE SUPERSTRUCTURE ALONG THE CENTERLINE OF THE PATH AND TO PREVENT MOVEMENT PERPENDICULAR TO THE CENTERLINE OF THE PATH.  
 THE APPEARANCE OF THE TRUSSES ON SHEET 7, THE BRIDGE SHALL BE SHOWN IN THE ELEVATION VIEW ON SHEET 7. THE BRIDGE SHALL BE UNPAINTED WEATHERING STEEL.  
 BEARING ANCHOR BOLTS, COMPOSITE DECKING, STEEL RAILS, TIMBER RUB RAILS & TIMBER JOE PLATES ARE INCLUDED IN BID ITEM "PRE-FABRICATED STEEL TRUSS PEDESTRIAN BRIDGE, B 13-834 LRFD"  
 ALL WOOD SHALL BE PRESSURE TREATED TO AMPA ACZA PER CURRENT STATE AND/OR AASHTO SPECIFICATIONS. WOOD SPECIES SHALL BE STATED IN 501.2.2.2 OF STANDARD SPECIFICATIONS.  
 ALL TRUSSES SHALL BE DESIGNED AS SIMPLE SPANS BETWEEN PIERS.  
 EXPOSED STEEL PILE SHELLS SHALL BE PAINTED IN ACCORDANCE WITH SECTION 503.3.11.3 OF THE STANDARD SPECIFICATIONS. COLOR SHALL BE FEDERAL STANDARD 595B COLORS #37030 FLAT BLACK.  
 SEE SPECIAL PROVISIONS FOR COMPOSITE DECK THICKNESS, GENERAL CONTRACTOR AND TRUSS MANUFACTURER TO COORDINATE COMPOSITE DECK THICKNESS, COLOR AND SUPPLIER FOR CONSISTENCY WITH METLAND BOARDWALK DECKING.  
**LEGEND**  
 ▲ COMPOSITE DECK ACTS AS A WEAR SURFACE FOR THE H-10 DESIGN VEHICLE WHEEL LOADING WITHIN THE 4'-0" WHEEL LINES. DECK SHALL BE DESIGNED FOR 150 PSF PEDESTRIAN LOADING IN REMAINING AREAS. CONTRACTOR SHALL BE RESPONSIBLE FOR DESIGNING COMPOSITE DECK FOR VEHICLE LIVE LOADS.

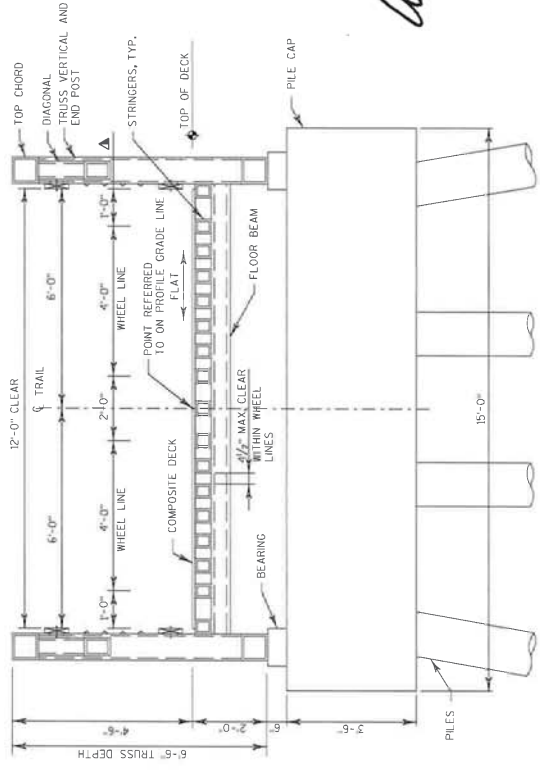
Addendum No. 03  
 ID 5992-08-85  
 Revised Sheet 102  
 December 4, 2015



*William C. Decker* SDR  
 12/04/15

**TOTAL ESTIMATED QUANTITIES**

BID ITEM NUMBER	BID ITEM	UNIT	W. ABUT	PIER 1	PIER 2	PIER 3	PIER 4	PIER 5	PIER 6	PIER 7	PIER 8	PIER 9	PIER 10	E. ABUT	SUPER	TOTAL
206.1000	EXCAVATION FOR STRUCTURES BRIDGES B-13-834	LS	-	-	-	-	-	-	-	-	-	-	-	-	-	1
502.0000	CONCRETE MASONRY BRIDGES	CY	8	6	6	6	6	6	6	6	6	6	6	6	8	76
505.0000	BAR STEEL REINFORCEMENT STRUCTURES	LB	40	60	60	60	60	60	60	60	60	60	60	60	40	680
505.0400	BAR STEEL REINFORCEMENT HS STRUCTURES	LB	1130	1360	1360	1360	1360	1360	1360	1360	1360	1360	1360	1360	1130	15,860
505.0600	BAR STEEL REINFORCEMENT CS COATED STRUCTURES	LB	730	540	540	540	540	540	540	540	540	540	540	540	730	6,860
550.2444	PLING CIP CONCRETE 14X 0.25-INCH	LF	160	320	280	240	200	180	160	160	160	160	160	160	160	2,340
506.8005.5	PRE-FABRICATED STEEL TRUSS PEDESTRIAN BRIDGE B-13-834 LRFD	LS	-	-	-	-	-	-	-	-	-	-	-	-	1	1



TYPICAL SECTION THROUGH PREFABRICATED STEEL TRUSS

NO.	DATE	REVISION	BY
1		COMPOSITE DECK NOTE REVISION	RCR

STATE OF WISCONSIN  
 DEPARTMENT OF TRANSPORTATION

STRUCTURE B-13-834  
 DRAWN BY RBH  
 PLANS CDD. AML

CROSS SECTION,  
 GENERAL NOTES  
 AND QUANTITIES

SHEET 2 OF 7  
 102

NO.	STATION	BENCH MARKS	ELEV.			
				NORTHING	EASTERN	DESCRIPTION
BM 1	137+51.6, 32 RT		850.36	465,348.01	864,696.03	MAC NAIL ON WEST SIDE OF MCDANIEL PARK PARKING LOT
BM 2	N/A		856.38	465,104.30	862,030.78	MAC NAIL ON NORTH SIDE OF ERLING AVENUE

Addendum No. 03  
 ID 5992-08-85  
 Revised Sheet 105  
 December 4, 2015

STATE PROJECT NUMBER  
 5992-08-85

**NOTES**

SEE SHEET 4 FOR PILE DETAILS.  
 ABUTMENTS TO BE SUPPORTED ON 14" x 14" SQUARE THICKNESS CAST-IN-PLACE CONCRETE PILES DRIVEN TO A REQUIRED DRIVING RESISTANCE OF 50 TONS PER PILE AS DETERMINED BY THE MODIFIED GATES FORMULA. ESTIMATED LENGTHS:  
 WEST ABUTMENT = 40'  
 EAST ABUTMENT = 40'

**LEGEND**

- ▬ - BATTER PILES 2" PER FOOT
- ▬ - GRADE 40 REINFORCEMENT
- ▬ - ANCHOR RODS SUPPLIED BY PREFABRICATED STEEL TRUSS MANUFACTURER. CONTRACTOR TO COORDINATE DELIVERY, PLACEMENT LOCATIONS, AND REQUIRED PROTECTION WITH TRUSS MANUFACTURER.

*William C. Dehn* SDR  
 12/04/15

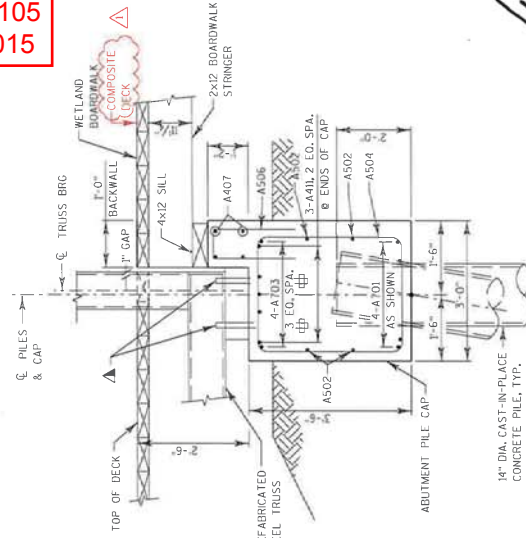


NO.	DATE	REVISION	BY
1		COMPOSITE DECK NOTE REVISION	KCP

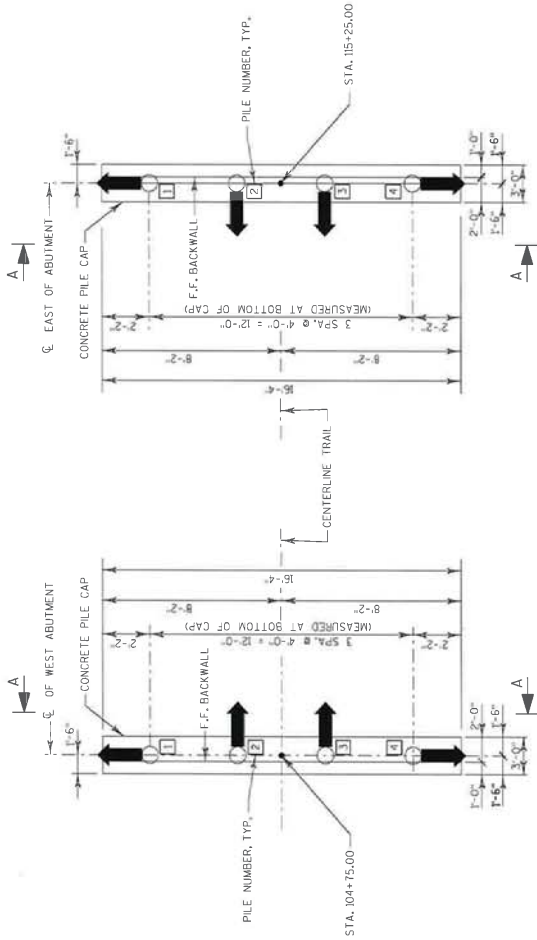
STATE OF WISCONSIN  
 DEPARTMENT OF TRANSPORTATION

STRUCTURE B-13-834  
 DRAWN BY RBH  
 PLANS CHECKED BY AML

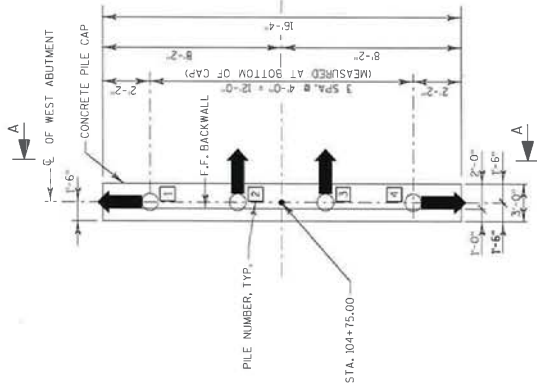
ABUTMENT GENERAL  
 SHEET 5 OF 7  
 105



SECTION C-C

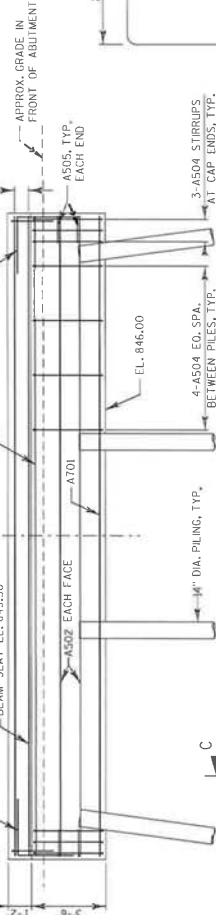


EAST ABUTMENT PLAN

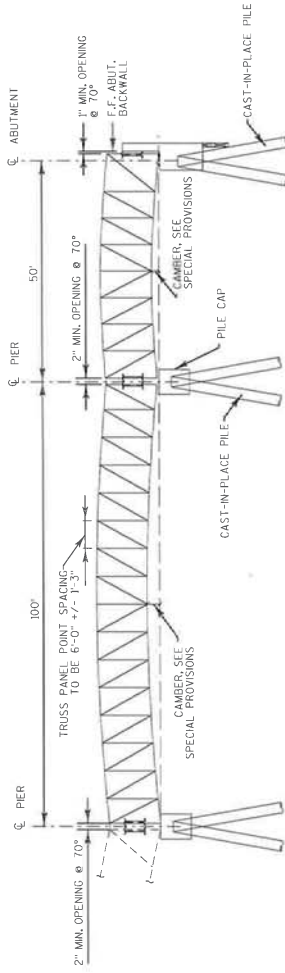


WEST ABUTMENT PLAN

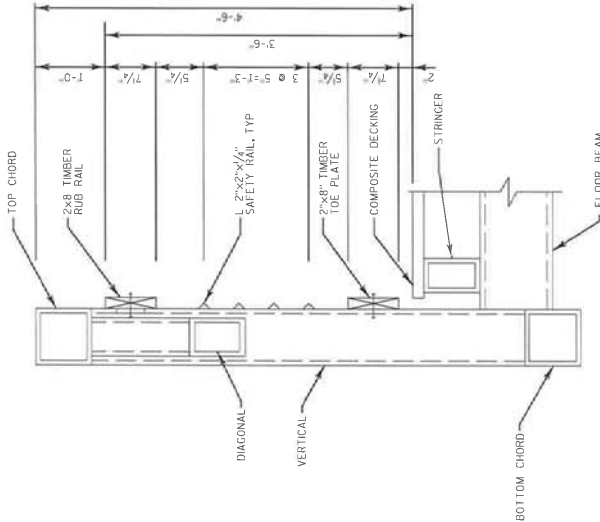
ABUTMENT - BILL OF BARS				LOCATION	
MARK	COATED	NO. REQD	LENGTH	BAR SERIES	BENT
A701	X	8	16'-0"		
A802	X	8	16'-0"		
A703	X	8	16'-0"		
A504	X	36	12'-0"	X	
A505	X	8	5'-11"	X	
A506	X	34	9'-7"	X	
A407	X	8	16'-0"		
A808		64	13'-2"		
A310		48	4'-2"		X
A411	X	12	2'-11"		X



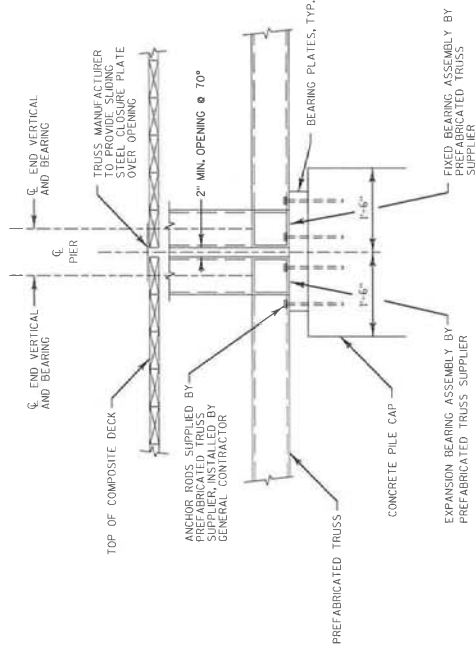
A-A ABUTMENT ELEVATION



PREFABRICATED STEEL TRUSS  
TYPICAL ELEVATION



RAILING DETAIL



TRUSS BEARING AT PIER

Addendum No. 03  
ID 5992-08-85  
Revised Sheet 107  
December 4, 2015

*William C. Decker* SDR  
12/04/15

NOTE REMOVED



NO.	DATE	REVISION	BY
1		COMPOSITE DECK NOTE REVISION	KGR
STATE OF WISCONSIN DEPARTMENT OF TRANSPORTATION			
STRUCTURE B-13-834			
DRAWN BY	CHKD.	AML	
TRUSS DETAILS			107