



Wisconsin Department of Transportation

January 6, 2016

Division of Transportation Systems Development

Bureau of Project Development
 4802 Sheboygan Avenue, Rm 601
 P O Box 7916
 Madison, WI 53707-7916

Telephone: (608) 266-1631
 Facsimile (FAX): (608) 266-8459

NOTICE TO ALL CONTRACTORS:

Proposal #04: 1661-05-78, WISC 2016 002
Prairie du Chien Bypass/
S Town-STH 60
South Town Lane Ely to STH 60
USH 18
Crawford County

1661-05-80
Prairie du Chien Bypass/
South Town Lane Ely to STH 60
Salt Storage Facility
USH 18
Crawford County

1661-05-88
Prairie du Chien Bypass/
S Town – STH 60
South Town Lane Ely to STH 60
Const Ops/Sanitary Sewer –
Water Main
USH 18
Crawford

Letting of January 12, 2016

This is Addendum No. 01, which provides for the following:

Special Provisions

Revised Special Provisions	
Article No.	Description
3	Prosecution and Progress
59	Crawford County Storage Shed, Item SPV.0105.01

Added Special Provisions	
Article No.	Description
63	Information to Bidders, Scenic Easements

Schedule of Items

Added Bid Item Quantities					
Bid Item	Item Description	Unit	Old Quantity	Revised Quantity	Proposal Total
511.1100	Temporary Shoring	SF	0	2104	2104

Plan Sheets

Revised Plan Sheets – ID 1661-05-78	
Plan Sheet	Plan Sheet Title (brief description of changes to sheet)
153	Traffic Control – Stage 1B (Ward Closed) (Bouska Open) (The portion of Cabin Hill Lane between Stations 43+00 and 47+00 was removed from Stage 1B and moved to Stage 2A to allow drainage from existing box culvert under USH 18 to be maintained during Stage 1)
154	Traffic Control – Stage 1B (The portion of Cabin Hill Lane between Stations 43+00 and 47+00 was removed from Stage 1B and moved to Stage 2A to allow drainage from existing box culvert under USH 18 to be maintained during Stage 1)
155	Traffic Control – Stage 1B (Ward Open) (Bouska Closed) (The portion of Cabin Hill Lane between Stations 43+00 and 47+00 was removed from Stage 1B and moved to Stage 2A to allow drainage from existing box culvert under USH 18 to be maintained during Stage 1)
157	Traffic Control – Stage 1B (Temporary Shoring added to allow staged installation of cross culvert located at Sta 267+94.31 WB)
159	Traffic Control – Stage 1B (Temporary Shoring added to allow staged installation of cross culvert located at Sta 295+32.49 WB)
168	Traffic Control – Stage 2A (Cabin Hill Open/Old Hwy 18 East Open) (The portion of Cabin Hill Lane between Stations 43+00 and 47+00 was removed from Stage 1B and moved to Stage 2A to allow drainage from existing box culvert under USH 18 to be maintained during Stage 1)
169	Traffic Control – Stage 2A (The portion of Cabin Hill Lane between Stations 43+00 and 47+00 was removed from Stage 1B and moved to Stage 2A to allow drainage from existing box culvert under USH 18 to be maintained during Stage 1)
172	Traffic Control – Stage 2A (Temporary Shoring added to allow staged installation of cross culvert located at Sta 268+23.99 EB)
175	Traffic Control – Stage 2A (Temporary Shoring added to allow staged installation of cross culvert located at Sta 268+23.99 EB)
233	Miscellaneous Quantities (Added the quantity table for Temporary Shoring, Item 511.1100)

Revised Plan Sheets – ID 1661-05-80	
Plan Sheet	Plan Sheet Title (brief description of changes to sheet)
5	Drawing Name: Floor Plan (Updated the Overhead Rolling Door information in the Door Schedule)
7 & 8	Drawing Name: Elevations (Added the exterior mounted hood for the rolling doors)
9	Drawing Name: Sections (Added the exterior mounted hood for the rolling doors and additional dimensions)

Added Plan Sheets – ID 1661-05-78	
Plan Sheet	Plan Sheet Title (brief description of why sheet was added)
168A	Traffic Control – Stage 2A (Cabin Hill Closed/Old Hwy 18 East Open) (The portion of Cabin Hill Lane between Stations 43+00 and 47+00 was removed from Stage 1B and moved to Stage 2A to allow drainage from existing box culvert under USH 18 to be maintained during Stage 1)

The responsibility for notifying potential subcontractors and suppliers of these changes remains with the prime contractor.

Sincerely,

Mike Coleman

Proposal Development Specialist
Proposal Management Section

ADDENDUM NO. 1
1661-05-78, 1661-05-80
January 5, 2016

Special Provisions

3. Prosecution and Progress.

*Replace entire section titled **Stage 1B** activities include: with the following:*

Stage 1B activities include:

- Construct the water main and casing pipe under the westbound lanes.
- Construct westbound lanes from Sta 200+71WB to Sta 325+50WB.
- Construct eastbound lanes from Sta 324+00EB to Sta 359+75EB.
- Construct Sugarloaf Trail, Cabin Hill Lane from Sta 47+00CH to Sta 51+00CH, Haven Drive, Church entrance, Utopia Lane, and Golf View Drive while open to local traffic.
- Construct Old Hwy 18 (West leg), Cabin Hill Lane from Sta 38+14CH to Sta 43+00CH, and Frontage Road while closed to traffic.
- Construct Ward Road and Bouska Road on an open/close alternating basis.
- Construct north half of structures B-12-0184, B-12-0187 and B-12-0188.
- Construct structure C-12-0167.
- Construct retaining wall R-12-0050.

*Replace entire section titled **Stage 2A** activities include: with the following:*

Stage 2A activities include:

- Place Stage 2 Traffic Control.
- Construct the sanitary sewer, water main and casing pipe under the eastbound lanes.
- Construct the multi-use path from South Town Lane to Sugarloaf Trail.
- Construct eastbound lanes from Sta 200+12EB to Sta 324+00EB.
- Construct westbound lanes from Sta 325+50WB to Sta 359+75WB.
- Construct Cabin Hill Lane from Sta 43+00CH to Sta 47+00CH while the Cabin Hill Lane connection road and Old Hwy 18 (East leg) are open to traffic.
- After Cabin Hill Lane has been constructed between Sta 43+00CH and Sta 47+00CH, construct Cabin Hill Lane connection road and Old Hwy 18 (East leg) on an open/close alternating basis.
- Construct Upper Bridgeport Road (West leg) and Upper Bridgeport Road (East leg) on an open/close alternating basis.
- Construct the new realigned STH 60 from Sta 163+57 to USH 18 while Upper Bridgeport Road (East leg) is closed to traffic.
- Construct the east side of STH 60 from Sta 163+57 to Sta 170+32 while Upper Bridgeport Road (West leg) is closed to traffic.
- Construct south half of structures B-12-0184, B-12-0187 and B-12-0188.
- After the westbound pavement has been placed construct the temporary crossover between Sta 356+58EB and 358+61EB.

59. Crawford County Storage Shed, Item SPV.0105.01.

*Replace paragraph one under section titled **B.4 Building Products** subsection titled Doors and Frames with the following:*

Rolling Overhead Doors: Provide two unobstructed rectangular entrance openings, nominal dimensions to be 28' high by 20' wide.

*Replace paragraph one under section titled **C.5 Doors** with the following:*

Provide two unobstructed rectangular entrance openings, under side dormers, nominal dimensions to be 28' high by 20' wide.

63. Information to Bidders, Scenic Easements.

The Wisconsin Department of Transportation holds scenic easements on properties abutting USH 18 within the project area. The right to quarry, or remove, or store any subsurface or subsurface mineral or material within the scenic easement areas is prohibited. The removal of trees and shrubs, the placement of certain signs, and the dumping of unsightly material within the scenic easement areas is also restricted. The width of the restrictions vary. Contact Greg Messling at (608) 785-9035 for more information on locations and restrictions associated with the scenic easements.

Schedule of Items

Attached, dated January 6, 2016, are the revised Schedule of Items Page 32.

Plan Sheets – ID 1661-05-78

The following 8½ x 11-inch sheets are attached and made part of the plans for this proposal:
Revised: 153, 154, 155, 157, 159, 168, 169, 172, 175 and 233.
Added: 168A.

Plan Sheets – ID 1661-05-80

The following 8½ x 11-inch sheets are attached and made part of the plans for this proposal:
Revised: 5, 7, 8 and 9.

END OF ADDENDUM

Addendum No. 01
 ID 1661-05-78
 Revised Sheet 153
 January 6, 2016

PAVEMENT MARKING LEGEND:

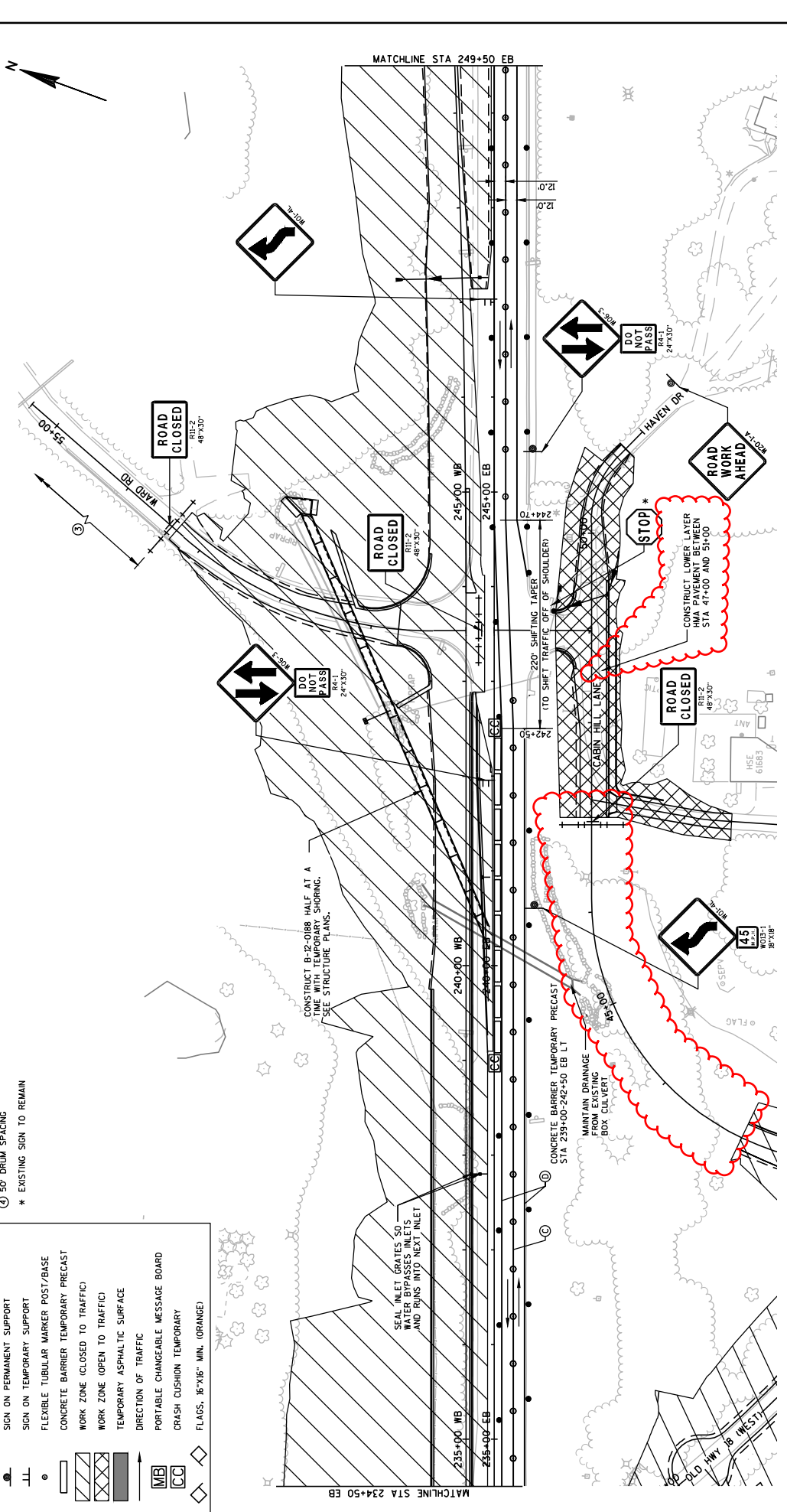
- ① TEMPORARY PAVEMENT MARKING REMOVABLE TAPE 4-INCH (YELLOW)
- ② TEMPORARY PAVEMENT MARKING 4-INCH (YELLOW)
- ③ TEMPORARY PAVEMENT MARKING 4-INCH (DOUBLE YELLOW)
- ④ TEMPORARY PAVEMENT MARKING 4-INCH (WHITE)

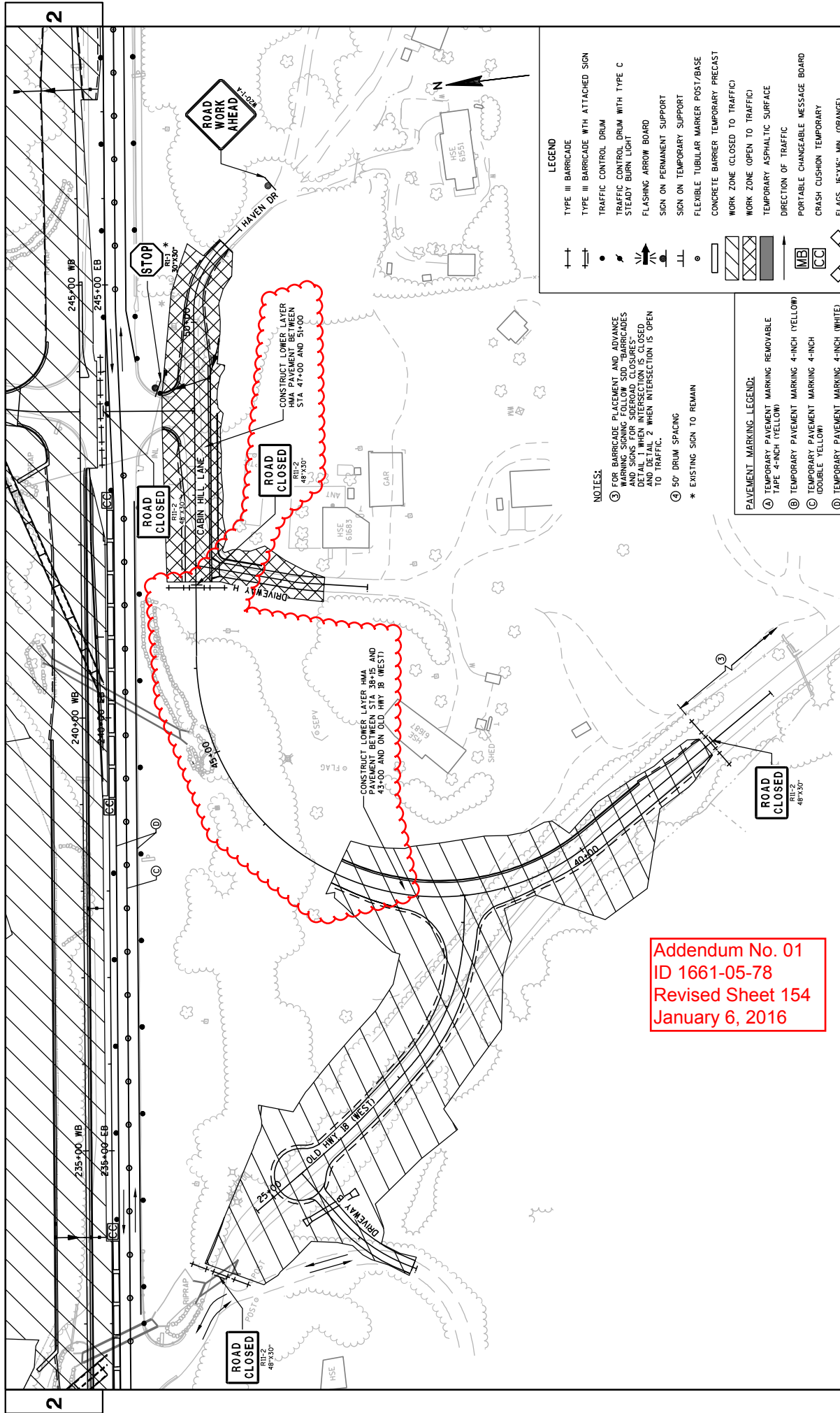
NOTES:

- ② 15' DRUM SPACING AROUND RADIUS (TYPICAL) AND IN FRONT OF ARROW BOARD
- ③ FOR BARRICADE PLACEMENT AND ADVANCE WARNING SIGNING FOLLOW SDD "BARRICADES AND SIGNS FOR SIDEROAD CLOSURES" AND DETAIL 2 WHEN INTERSECTION IS OPEN TO TRAFFIC.
- ④ 50' DRUM SPACING
- * EXISTING SIGN TO REMAIN

LEGEND

	TYPE III BARRICADE
	TYPE III BARRICADE WITH ATTACHED SIGN
	TRAFFIC CONTROL DRUM
	TRAFFIC CONTROL DRUM WITH TYPE C
	STEADY BURN LIGHT
	FLASHING ARROW BOARD
	SIGN ON PERMANENT SUPPORT
	SIGN ON TEMPORARY SUPPORT
	FLEXIBLE TUBULAR MARKER POST/BASE
	CONCRETE BARRIER TEMPORARY PRECAST
	WORK ZONE (CLOSED TO TRAFFIC)
	WORK ZONE (OPEN TO TRAFFIC)
	TEMPORARY ASPHALTIC SURFACE
	DIRECTION OF TRAFFIC
	PORTABLE CHANGEABLE MESSAGE BOARD
	CRASH CUSHION TEMPORARY
	FLAGS, 16"x16" MIN. (ORANGE)





Addendum No. 01
 ID 1661-05-78
 Revised Sheet 154
 January 6, 2016

LEGEND

	TYPE III BARRICADE
	BARRICADE WITH ATTACHED SIGN
	TRAFFIC CONTROL DRUM
	TRAFFIC CONTROL DRUM WITH TYPE C STEADY BURN LIGHT
	FLASHING ARROW BOARD
	SIGN ON PERMANENT SUPPORT
	SIGN ON TEMPORARY SUPPORT
	FLEXIBLE TUBULAR MARKER POST/BASE
	CONCRETE BARRIER
	CONCRETE BARRIER TEMPORARY PRECAST
	WORK ZONE (CLOSED TO TRAFFIC)
	WORK ZONE (OPEN TO TRAFFIC)
	TEMPORARY ASPHALTIC SURFACE
	DIRECTION OF TRAFFIC
	PORTABLE CHANGEABLE MESSAGE BOARD
	CRASH CUSHION TEMPORARY
	FLAG, 16" X 6" MIN. (ORANGE)

- NOTES:**
- 1) FOR BARRICADE PLACEMENT AND ADVANCE WARNING SIGNING FOLLOW SDD "BARRICADES AND SIGNS FOR SIDEROAD CLOSURES" DETAIL 1 WHEN INTERSECTION IS CLOSED TO TRAFFIC. DETAIL 2 WHEN INTERSECTION IS OPEN TO TRAFFIC.
 - 2) 50' DRUM SPACING
 - 3) EXISTING SIGN TO REMAIN
- PAVEMENT MARKING LEGEND:**
- | | |
|--|---|
| | A TEMPORARY PAVEMENT MARKING REMOVABLE TAPE 4-INCH (YELLOW) |
| | B TEMPORARY PAVEMENT MARKING 4-INCH (YELLOW) |
| | C TEMPORARY PAVEMENT MARKING 4-INCH (DOUBLE YELLOW) |
| | D TEMPORARY PAVEMENT MARKING 4-INCH (WHITE) |

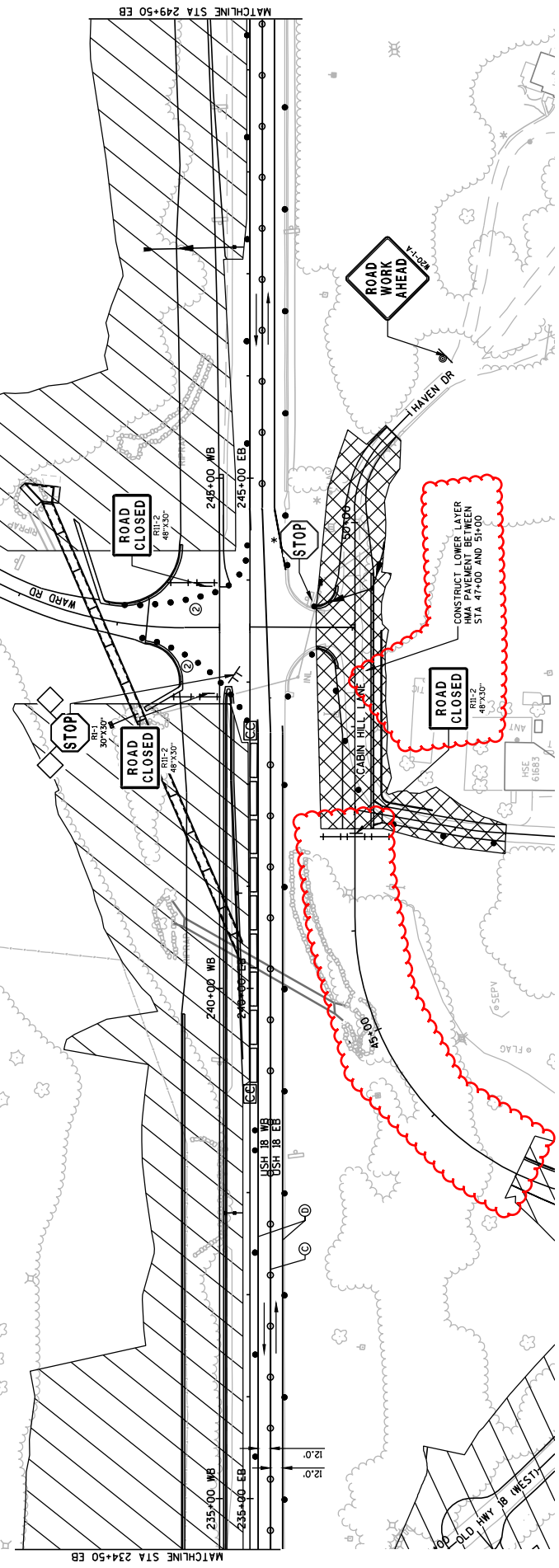
LEGEND

	TYPE III BARRICADE
	TYPE III BARRICADE WITH ATTACHED SIGN
	TRAFFIC CONTROL DRUM
	TRAFFIC CONTROL DRUM WITH TYPE C STEADY BURN LIGHT
	FLASHING ARROW BOARD
	SIGN ON PERMANENT SUPPORT
	SIGN ON TEMPORARY SUPPORT
	FLEXIBLE TUBULAR MARKER POST/BASE
	CONCRETE BARRIER TEMPORARY PRECAST
	WORK ZONE (CLOSED TO TRAFFIC)
	WORK ZONE (OPEN TO TRAFFIC)
	TEMPORARY ASPHALTIC SURFACE
	DIRECTION OF TRAFFIC
	PORTABLE CHANGEABLE MESSAGE BOARD
	CRASH CUSHION TEMPORARY
	FLAGS, 16"x16" MIN. (ORANGE)

- NOTES:**
- ① 500' MAX OR AT LAST INTERSECTION: WHICHEVER IS CLOSER.
 - ② 15' DRUM SPACING AROUND RADIUS (TYPICAL) AND IN FRONT OF ARROW BOARD
 - ③ FOR BARRICADE PLACEMENT AND ADVANCE WARNING SIGNING FOLLOW "SD" "BARRICADES AND SIGNS FOR SIDEROAD CLOSURES" DETAIL 1 WHEN INTERSECTION IS CLOSED AND DETAIL 2 WHEN INTERSECTION IS OPEN TO TRAFFIC.
- * EXISTING SIGN TO REMAIN

- PAVEMENT MARKING LEGEND:**
- ① TEMPORARY PAVEMENT MARKING REMOVABLE TAPE 4-INCH (YELLOW)
 - ② TEMPORARY PAVEMENT MARKING 4-INCH (YELLOW)
 - ③ TEMPORARY PAVEMENT MARKING 4-INCH (DOUBLE YELLOW)
 - ④ TEMPORARY PAVEMENT MARKING 4-INCH (WHITE)

Addendum No. 01
ID 1661-05-78
Revised Sheet 155
January 6, 2016



FILE NAME : N:\POS\C3D\16610508\SHETS\PLAN\PR-TOLSH18.STAGE 1B ALT.DWG

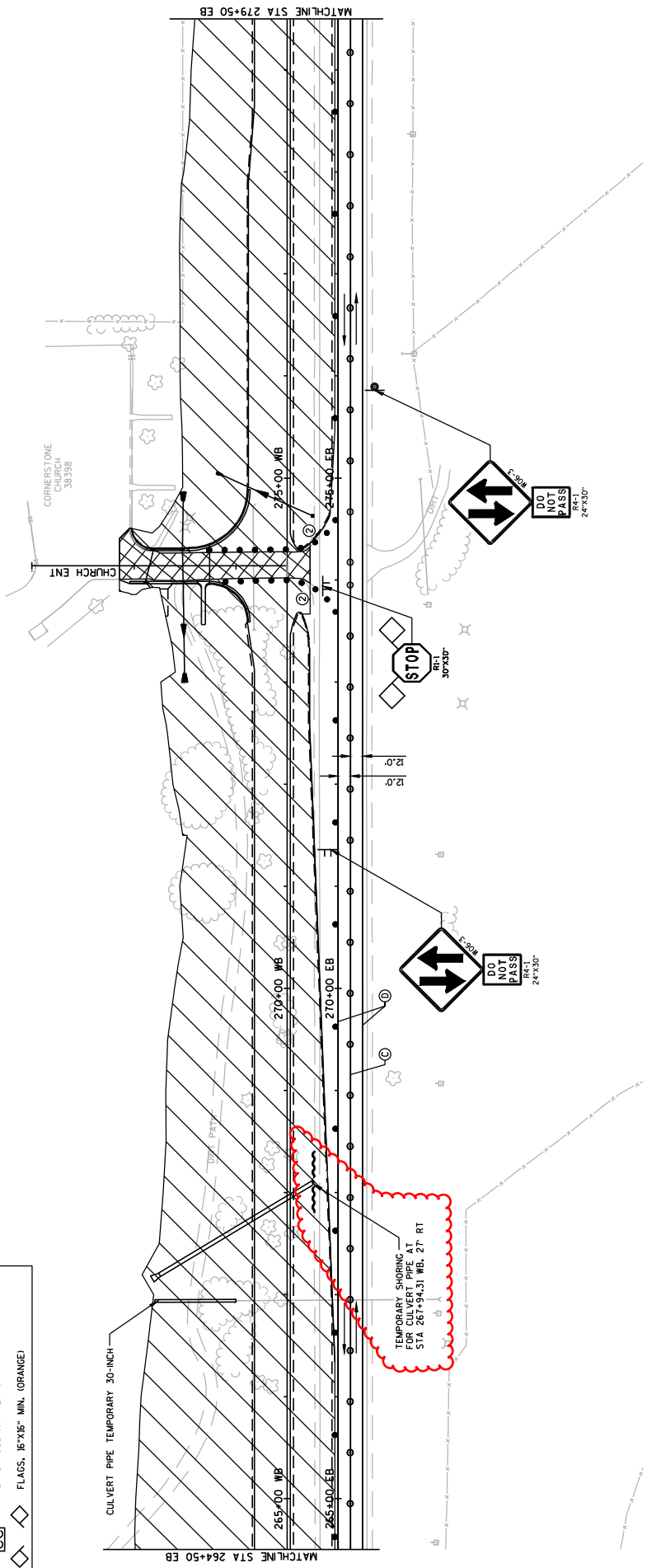
- LEGEND**
- TYPE III BARRICADE
 - TYPE III BARRICADE WITH ATTACHED SIGN
 - TRAFFIC CONTROL DRUM
 - TRAFFIC CONTROL DRUM WITH TYPE C STEADY BURN LIGHT
 - FLASHING ARROW BOARD
 - SIGN ON PERMANENT SUPPORT
 - SIGN ON TEMPORARY SUPPORT
 - FLEXIBLE TUBULAR MARKER POST/BASE
 - CONCRETE BARRIER TEMPORARY PRECAST
 - WORK ZONE (CLOSED TO TRAFFIC)
 - WORK ZONE (OPEN TO TRAFFIC)
 - TEMPORARY ASPHALTIC SURFACE
 - DIRECTION OF TRAFFIC
 - PORTABLE CHANGEABLE MESSAGE BOARD
 - CRASH CUSHION TEMPORARY
 - FLAGS, 16"x16" MIN. (ORANGE)

NOTES:

- ① 15' DRUM SPACING AROUND RADIUS (TYPICAL) AND IN FRONT OF ARROW BOARD

- PAVEMENT MARKING LEGEND:**
- ① TEMPORARY PAVEMENT MARKING REMOVABLE TAPE 4-INCH (YELLOW)
 - ② TEMPORARY PAVEMENT MARKING 4-INCH (YELLOW)
 - ③ TEMPORARY PAVEMENT MARKING 4-INCH (DOUBLE YELLOW)
 - ④ TEMPORARY PAVEMENT MARKING 4-INCH (WHITE)

Addendum No. 01
 ID 1661-05-78
 Revised Sheet 157
 January 6, 2016



LEGEND

	TYPE III BARRICADE
	TYPE III BARRICADE WITH ATTACHED SIGN
	TRAFFIC CONTROL DRUM
	TRAFFIC CONTROL DRUM WITH TYPE C STEADY BURN LIGHT
	FLASHING ARROW BOARD
	SIGN ON PERMANENT SUPPORT
	SIGN ON TEMPORARY SUPPORT
	FLEXIBLE TUBULAR MARKER POST/BASE
	CONCRETE BARRIER TEMPORARY PRECAST
	WORK ZONE (CLOSED TO TRAFFIC)
	WORK ZONE (OPEN TO TRAFFIC)
	TEMPORARY ASPHALTIC SURFACE
	DIRECTION OF TRAFFIC
	PORTABLE CHANGEABLE MESSAGE BOARD
	CRASH CUSHION TEMPORARY
	FLAGS, 16"x16" MIN. (ORANGE)

NOTES:

② 15' DRUM SPACING AROUND RADIUS (TYPICAL) AND IN FRONT OF ARROW BOARD

PAVEMENT MARKING LEGEND:

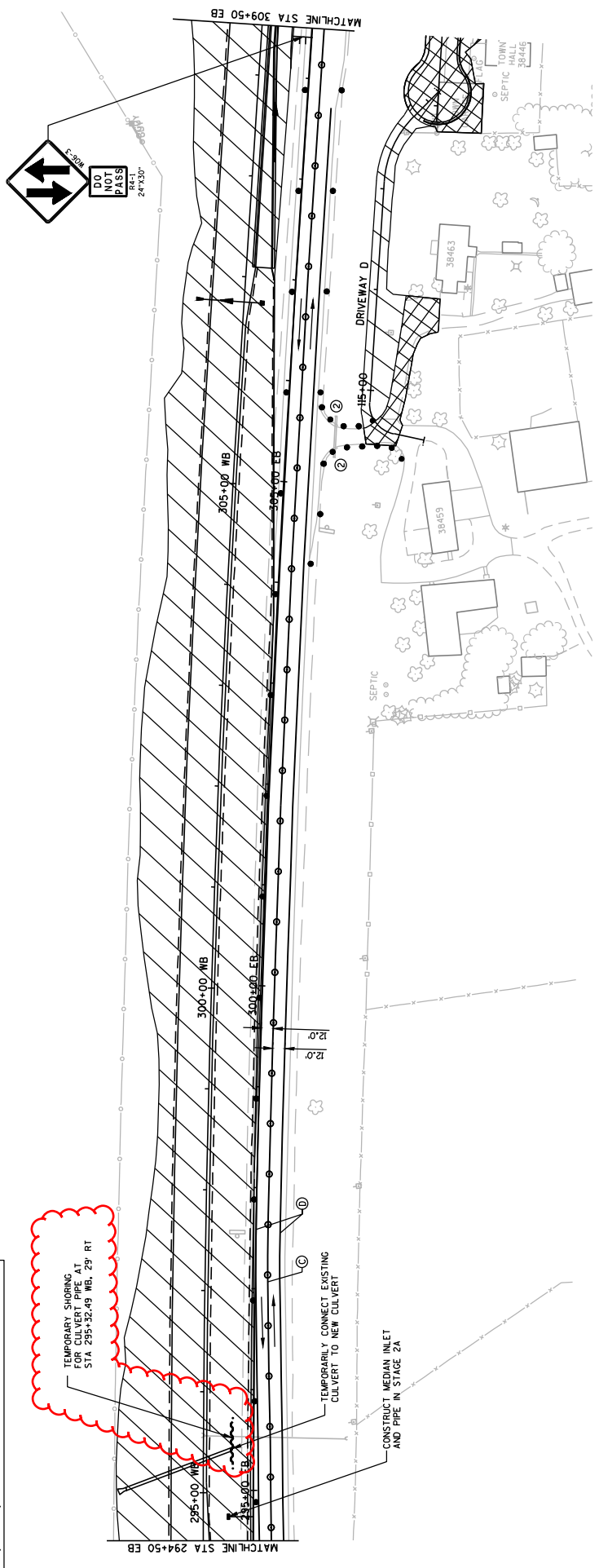
① TEMPORARY PAVEMENT MARKING REMOVABLE TAPE 4-INCH (YELLOW)

② TEMPORARY PAVEMENT MARKING 4-INCH (YELLOW)

③ TEMPORARY PAVEMENT MARKING 4-INCH (DOUBLE YELLOW)

④ TEMPORARY PAVEMENT MARKING 4-INCH (WHITE)

Addendum No. 01
ID 1661-05-78
Revised Sheet 159
January 6, 2016



- PAVEMENT MARKING LEGEND:**
- Ⓐ TEMPORARY PAVEMENT MARKING REMOVABLE TAPE 4-INCH (YELLOW)
 - Ⓑ TEMPORARY PAVEMENT MARKING 4-INCH (YELLOW)
 - Ⓒ TEMPORARY PAVEMENT MARKING 4-INCH (DOUBLE YELLOW)
 - Ⓓ TEMPORARY PAVEMENT MARKING 4-INCH (WHITE)
 - Ⓔ TEMPORARY PAVEMENT MARKING REMOVABLE TAPE 4-INCH (DOUBLE YELLOW)
 - Ⓕ TEMPORARY PAVEMENT MARKING REMOVABLE TAPE 4-INCH (WHITE)
 - Ⓖ TEMPORARY PAVEMENT MARKING REMOVABLE TAPE 8-INCH (WHITE)

- NOTES:**
- ① 500' MAX OR AT LAST INTERSECTION: WHICHEVER IS CLOSER.
 - ② 50' DRUM SPACING

LEGEND

- TYPE III BARRICADE
- TYPE III BARRICADE WITH ATTACHED SIGN
- TRAFFIC CONTROL DRUM
- TRAFFIC CONTROL DRUM WITH TYPE C STEADY BURN LIGHT
- FLASHING ARROW BOARD
- SIGN ON PERMANENT SUPPORT
- SIGN ON TEMPORARY SUPPORT
- FLEXIBLE TUBULAR MARKER POST/BASE
- CONCRETE BARRIER TEMPORARY PRECAST
- WORK ZONE (CLOSED TO TRAFFIC)
- WORK ZONE (OPEN TO TRAFFIC)
- TEMPORARY ASPHALTIC SURFACE
- DIRECTION OF TRAFFIC
- PORTABLE CHANGEABLE MESSAGE BOARD
- CRASH CUSHION TEMPORARY
- FLAGS, 16"x16" MIN. (ORANGE)

CONCRETE BARRIER TEMPORARY PRECAST STA 238+50-242+00 WB LT

CONSTRUCT 8" R-0.088 HALF AT A TIME WITH TEMPORARY SHORING. SEE STRUCTURE PLANS.

CONSTRUCT LOWER LAYER HMA PAVEMENT BETWEEN EXISTING TO OPENING TO LOCAL TRAFFIC

ROAD WORK AHEAD

ROAD CLOSED

DO NOT PASS

ROAD WORK AHEAD

ROAD CLOSED

ROAD CLOSED

ROAD CLOSED

ROAD CLOSED

ROAD CLOSED

ROAD CLOSED

ROAD CLOSED

ROAD CLOSED

ROAD CLOSED

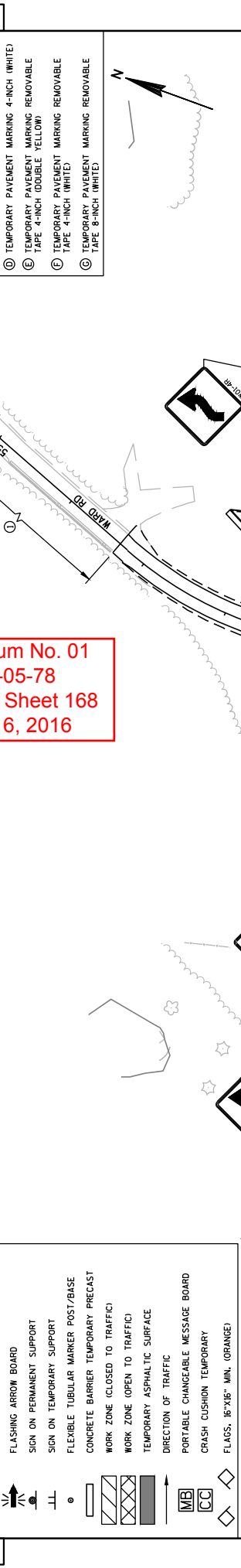
ROAD CLOSED

ROAD CLOSED

ROAD CLOSED

ROAD CLOSED

ROAD CLOSED



ADDENDUM NO. 01
ID 1661-05-78
Revised Sheet 168
January 6, 2016

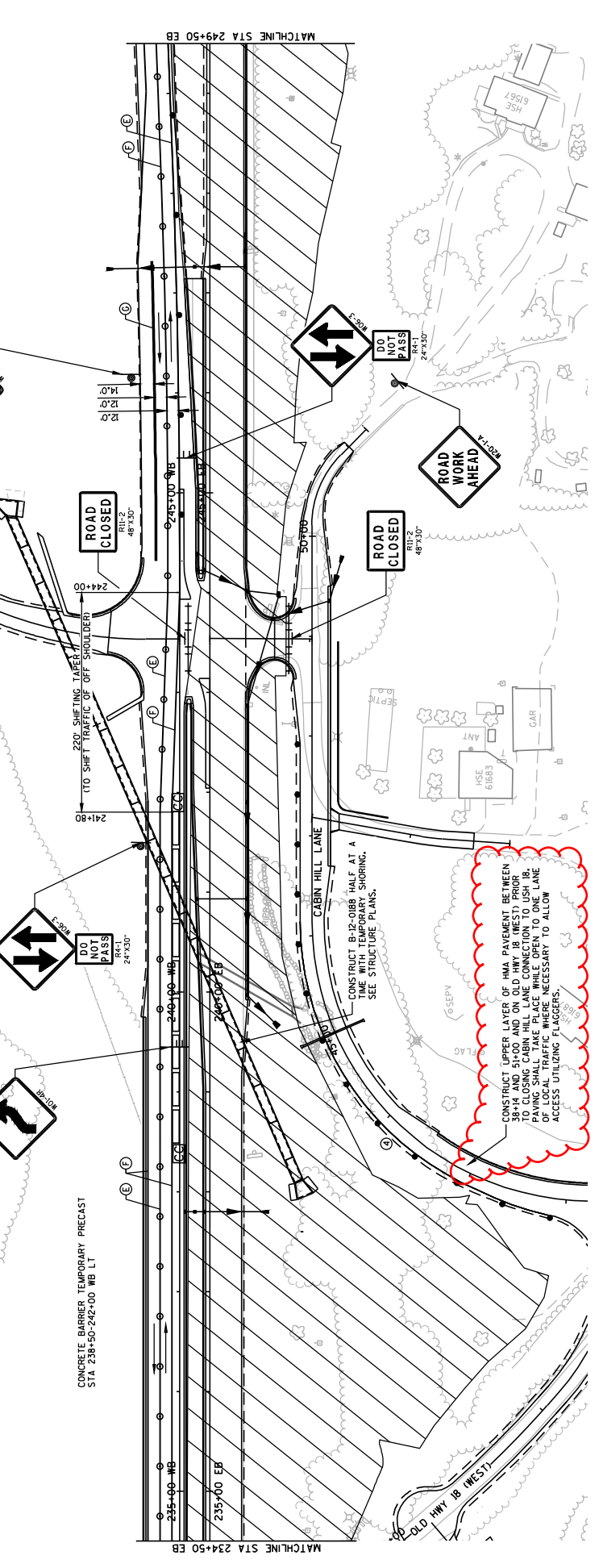
- PAVEMENT MARKING LEGEND:**
- ① TEMPORARY PAVEMENT MARKING REMOVABLE TAPE 4-INCH (YELLOW)
 - ② TEMPORARY PAVEMENT MARKING 4-INCH (YELLOW)
 - ③ TEMPORARY PAVEMENT MARKING 4-INCH (DOUBLE YELLOW)
 - ④ TEMPORARY PAVEMENT MARKING 4-INCH (WHITE)
 - ⑤ TEMPORARY PAVEMENT MARKING REMOVABLE TAPE 4-INCH (DOUBLE YELLOW)
 - ⑥ TEMPORARY PAVEMENT MARKING REMOVABLE TAPE 4-INCH (WHITE)
 - ⑦ TEMPORARY PAVEMENT MARKING REMOVABLE TAPE 8-INCH (WHITE)

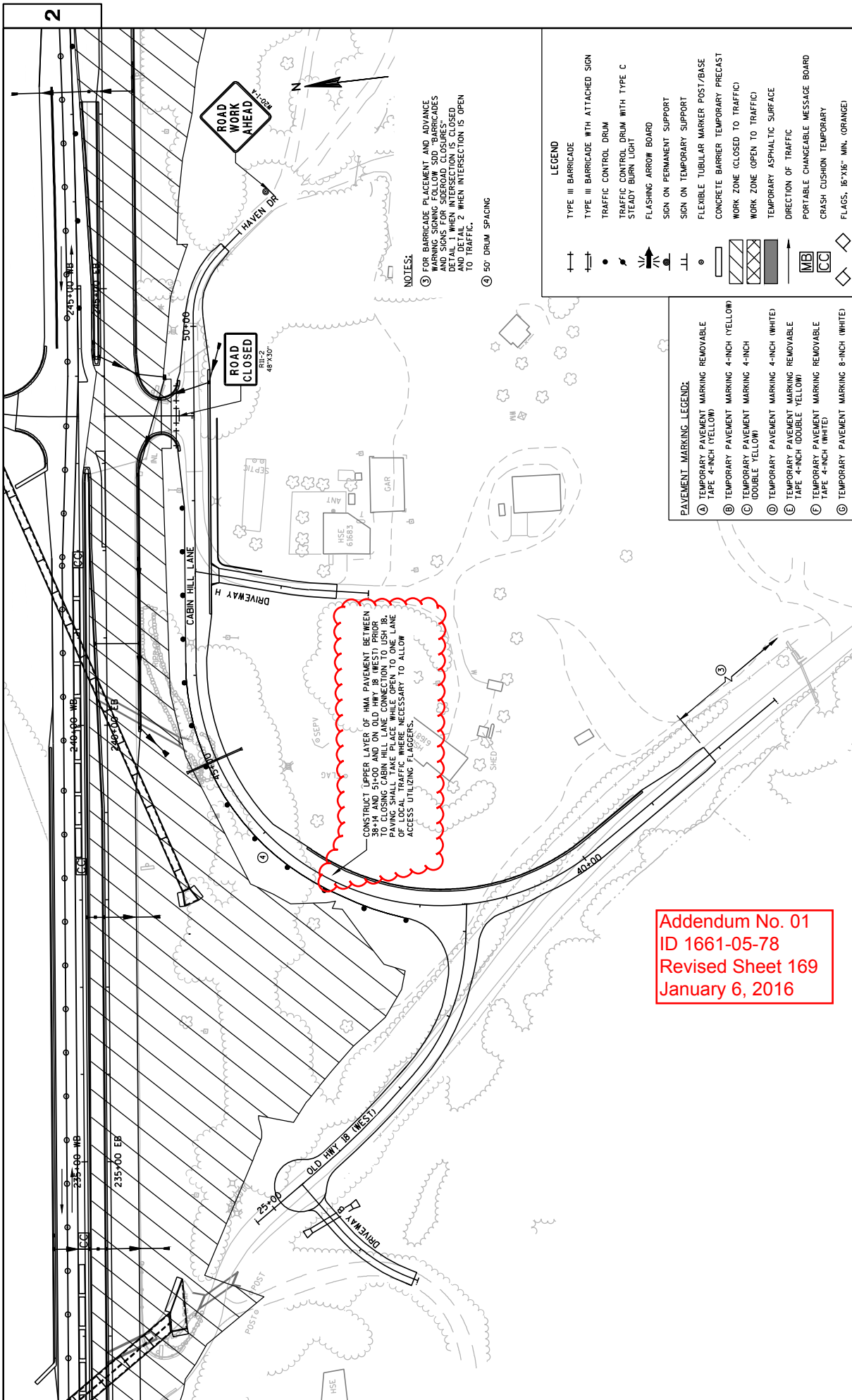


Addendum No. 01
ID 1661-05-78
Added Sheet 168A
January 6, 2016

- NOTES:**
- ① 500' MAX OR AT LAST INTERSECTION; WHICHEVER IS CLOSER.
 - ② 50' DRUM SPACING

- LEGEND**
- TYPE III BARRICADE
 - TYPE III BARRICADE WITH ATTACHED SIGN
 - TRAFFIC CONTROL DRUM
 - TRAFFIC CONTROL DRUM WITH TYPE C STEADY BURN LIGHT
 - FLASHING ARROW BOARD
 - SIGN ON PERMANENT SUPPORT
 - SIGN ON TEMPORARY SUPPORT
 - FLEXIBLE TUBULAR MARKER POST/BASE
 - CONCRETE BARRIER TEMPORARY PRECAST
 - WORK ZONE (CLOSED TO TRAFFIC)
 - WORK ZONE (OPEN TO TRAFFIC)
 - TEMPORARY ASPHALTIC SURFACE
 - DIRECTION OF TRAFFIC
 - PORTABLE CHANGEABLE MESSAGE BOARD
 - CRASH CUSHION TEMPORARY
 - FLAGS, 16"X16" MIN. (ORANGE)





CONSTRUCT UPPER LAYER OF HMA PAVEMENT BETWEEN 38+14 AND 51+00 AND ON OLD HWY 18 (WEST) PRIOR TO CLOSING CABIN HILL LANE CONNECTION TO USH 18. PAVING SHALL BE DONE IN 10' WIDENING TO USH 18 LANE OF LOCAL TRAFFIC WHERE NECESSARY TO ALLOW ACCESS UTILIZING FLAGGERS.

NOTES:
 ③ FOR BARRICADE PLACEMENT AND ADVANCE WARNING SIGNING FOLLOW STD "BARRICADES AND SIGNS FOR SIDEROAD CLOSURES" DETAIL 1 WHEN INTERSECTION IS CLOSED AND DETAIL 2 WHEN INTERSECTION IS OPEN TO TRAFFIC.
 ④ 50' DRUM SPACING

LEGEND

	TYPE III BARRICADE
	TRAFFIC CONTROL DRUM
	TRAFFIC CONTROL DRUM WITH TYPE C STEADY BURN LIGHT
	FLASHING ARROW BOARD
	SIGN ON PERMANENT SUPPORT
	SIGN ON TEMPORARY SUPPORT
	FLEXIBLE TUBULAR MARKER POST/BASE
	CONCRETE BARRIER TEMPORARY PRECAST
	WORK ZONE (CLOSED TO TRAFFIC)
	WORK ZONE (OPEN TO TRAFFIC)
	TEMPORARY ASPHALTIC SURFACE
	DIRECTION OF TRAFFIC
	PORTABLE CHANGEABLE MESSAGE BOARD
	CRASH CUSHION TEMPORARY
	FLAGS, 16"x16" MIN. (ORANGE)

PAVEMENT MARKING LEGEND:

	TEMPORARY PAVEMENT MARKING REMOVABLE TAPE 4-INCH (YELLOW)
	TEMPORARY PAVEMENT MARKING 4-INCH (YELLOW)
	TEMPORARY PAVEMENT MARKING 4-INCH (WHITE)
	TEMPORARY PAVEMENT MARKING REMOVABLE TAPE 4-INCH (DOUBLE YELLOW)
	TEMPORARY PAVEMENT MARKING REMOVABLE TAPE 4-INCH (WHITE)
	TEMPORARY PAVEMENT MARKING 8-INCH (WHITE)

Addendum No. 01
 ID 1661-05-78
 Revised Sheet 169
 January 6, 2016

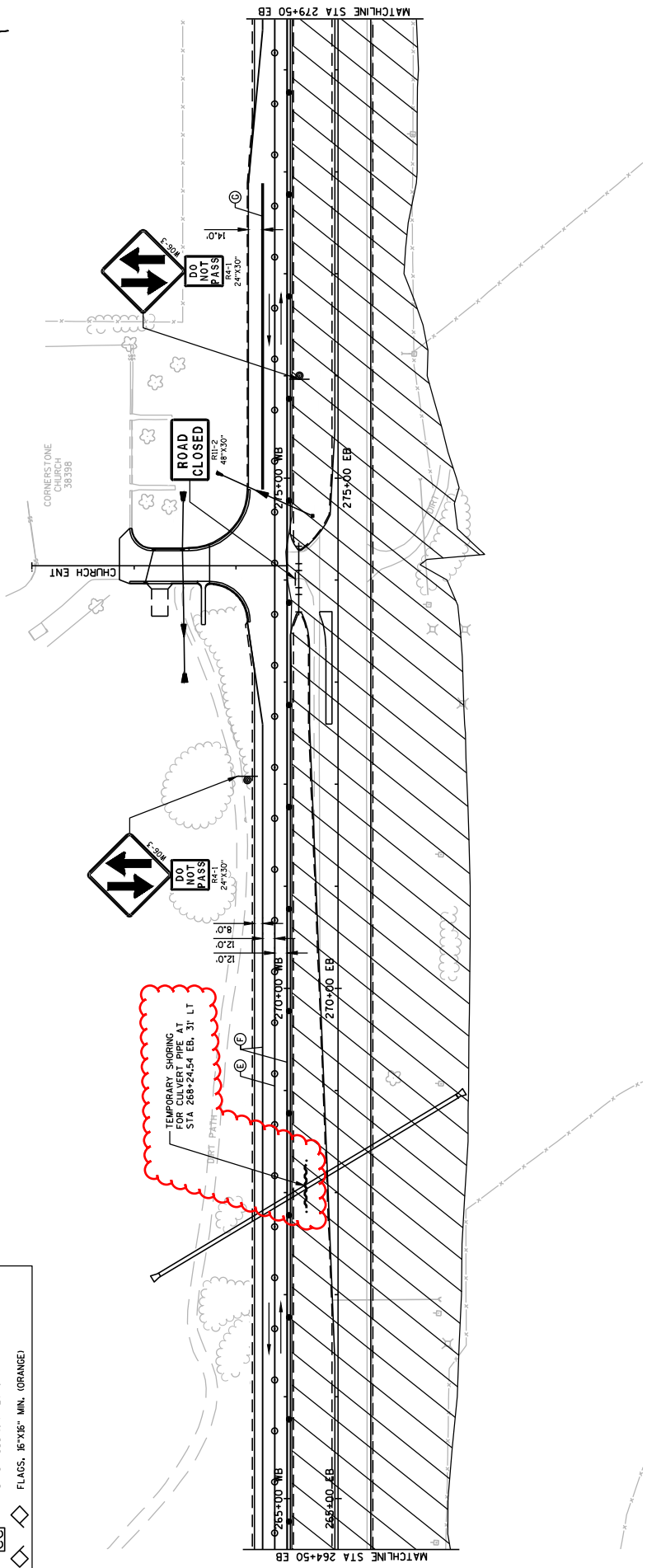
PAVEMENT MARKING LEGEND:

- ① TEMPORARY PAVEMENT MARKING REMOVABLE TAPE 4-INCH (YELLOW)
- ② TEMPORARY PAVEMENT MARKING 4-INCH (YELLOW)
- ③ TEMPORARY PAVEMENT MARKING 4-INCH (DOUBLE YELLOW)
- ④ TEMPORARY PAVEMENT MARKING 4-INCH (WHITE)
- ⑤ TEMPORARY PAVEMENT MARKING REMOVABLE TAPE 4-INCH (DOUBLE YELLOW)
- ⑥ TEMPORARY PAVEMENT MARKING REMOVABLE TAPE 4-INCH (WHITE)
- ⑦ TEMPORARY PAVEMENT MARKING REMOVABLE TAPE 8-INCH (WHITE)

Addendum No. 01
 ID 1661-05-78
 Revised Sheet 172
 January 6, 2016

LEGEND

- TYPE III BARRICADE
- TYPE III BARRICADE WITH ATTACHED SIGN
- TRAFFIC CONTROL DRUM
- TRAFFIC CONTROL DRUM WITH TYPE C STEADY BURN LIGHT
- FLASHING ARROW BOARD
- SIGN ON PERMANENT SUPPORT
- SIGN ON TEMPORARY SUPPORT
- FLEXIBLE TUBULAR MARKER POST/BASE
- CONCRETE BARRIER TEMPORARY PRECAST
- WORK ZONE (CLOSED TO TRAFFIC)
- WORK ZONE (OPEN TO TRAFFIC)
- TEMPORARY ASPHALTIC SURFACE
- DIRECTION OF TRAFFIC
- PORTABLE CHANGEABLE MESSAGE BOARD
- CRASH CUSHION TEMPORARY
- FLAGS, 16"x16" MIN. (ORANGE)

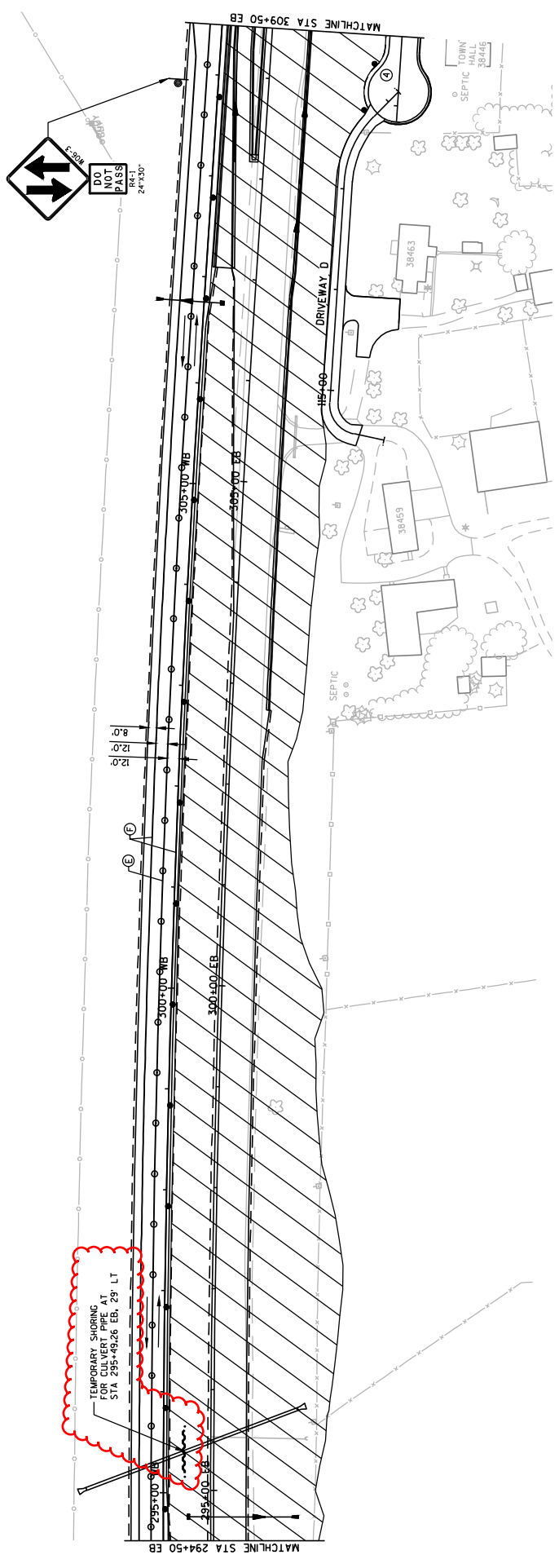




Addendum No. 01
ID 1661-05-78
Revised Sheet 175
January 6, 2016

- PAVEMENT MARKING LEGEND:
- Ⓐ TEMPORARY PAVEMENT MARKING REMOVABLE TAPE 4-INCH (YELLOW)
 - Ⓑ TEMPORARY PAVEMENT MARKING 4-INCH (YELLOW)
 - Ⓒ TEMPORARY PAVEMENT MARKING 4-INCH (DOUBLE YELLOW)
 - Ⓓ TEMPORARY PAVEMENT MARKING 4-INCH (WHITE)
 - Ⓔ TEMPORARY PAVEMENT MARKING REMOVABLE TAPE 4-INCH (DOUBLE YELLOW)
 - Ⓕ TEMPORARY PAVEMENT MARKING REMOVABLE TAPE 4-INCH (WHITE)

- LEGEND
- TYPE III BARRICADE
 - TYPE III BARRICADE WITH ATTACHED SIGN
 - TRAFFIC CONTROL DRUM
 - TRAFFIC CONTROL DRUM WITH TYPE C STEADY BURN LIGHT
 - FLASHING ARROW BOARD
 - SIGN ON PERMANENT SUPPORT
 - SIGN ON TEMPORARY SUPPORT
 - FLEXIBLE TUBULAR MARKER POST/BASE
 - CONCRETE BARRIER TEMPORARY PRECAST
 - WORK ZONE (CLOSED TO TRAFFIC)
 - WORK ZONE (OPEN TO TRAFFIC)
 - TEMPORARY ASPHALTIC SURFACE
 - DIRECTION OF TRAFFIC
 - PORTABLE CHANGEABLE MESSAGE BOARD
 - CRASH CUSHION TEMPORARY
 - FLAGS, 16"x16" MIN. (ORANGE)



TEMPORARY SHORING

STATION - STATION	LOCATION	SF	REMARKS
511.1100			
STAGE 1B			
USH 18 WB	RT	688	*
288+24	RT	364	*
295+49			
STAGE 2A			
USH 18 EB	LT	688	*
288+24	LT	364	*
295+49			
ITEM TOTAL		2104	

* FOR STAGING OF CULVERT INSTALLATION

CULVERT PIPE TEMPORARY

STATION - STATION	LOCATION	520.4024 24-INCH	520.4030 30-INCH	520.4036 36-INCH
STAGE 1B				
USH 18 EB	LT	64		
215+39	LT	105		
263+53	LT		80	
266+95				
281+83	LT	87		
315+48	LT	98		
339+98	RT	92		
STAGE 3A				
USH 18 EB	LT		12	
383+14				
ITEM TOTAL		448	80	12

CONCRETE COLLARS FOR PIPE

STATION	LOCATION	520.8000 EACH
USH 18		
204+02 EB	RT	1
ITEM TOTAL		1

CULVERT PIPE REINFORCED CONCRETE

STATION	LOCATION	18-INCH		24-INCH		30-INCH		36-INCH		42-INCH		48-INCH		54-INCH		INVERT ELEV.*
		LF	LF	LF	LF	LF	LF	LF	LF	LF	LF	LF	LF	LF	UP	
USH 18 EB																
216+50	LT & RT															646.81 (S)
253+25	LT & RT															722.11 (S)
268+24	LT & RT															728.80 (S)
268+24	LT & RT															728.00 (S)
362+14	LT & RT															703.84 (E)
362+20	LT & RT															703.84 (E)
USH 18 WB																702.02 (W)
205+50	LT															637.52 (W)
DRIVEWAY B																636.89 (E)
23+51	LT & RT															662.23 (S)
GOLF VIEW DRIVE																661.84 (N)
123+41	LT & RT															758.97 (S)
FRONTAGE ROAD																758.42 (N)
140+74	LT & RT															781.00 (E)
UPPER BRIDGEPORT ROAD																758.12 (W)
179+39	LT & RT															758.66 (W)
ITEM TOTAL		76	76	244	224	142	54	100	340	282	148					

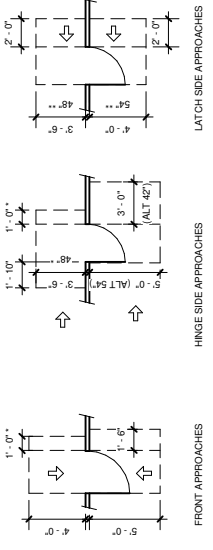
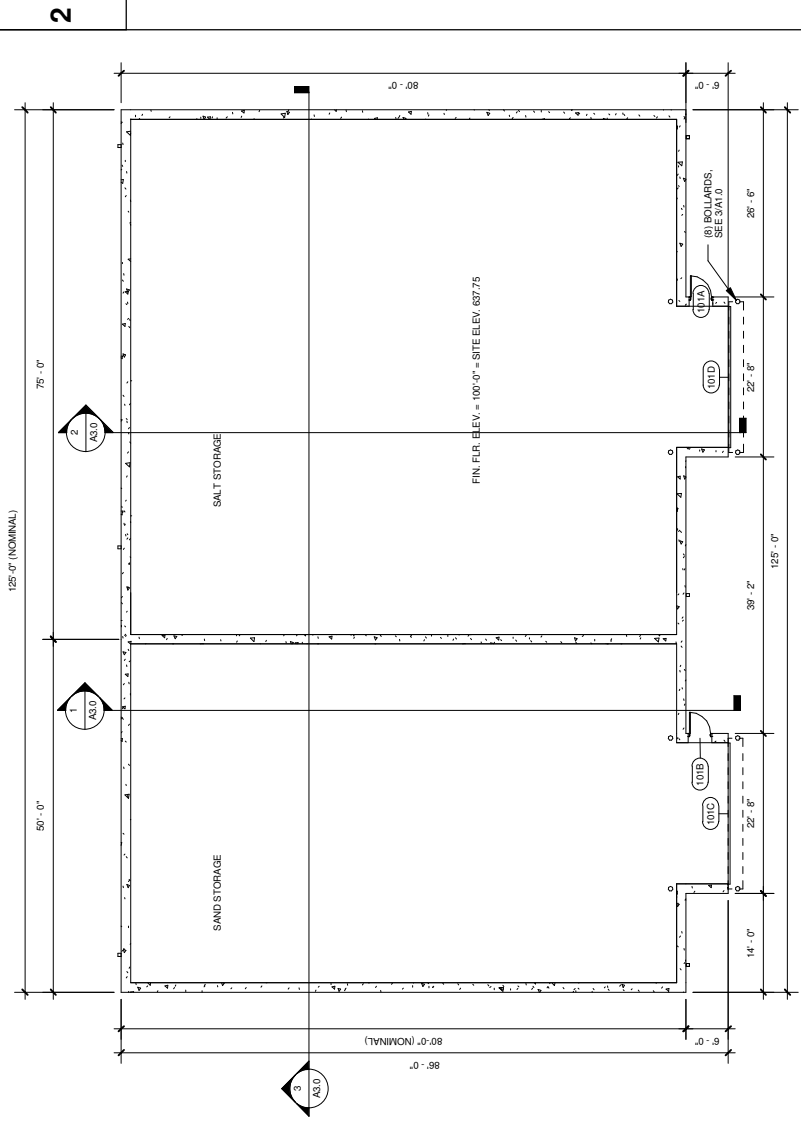
* ELEVATION LOCATED AT END OF APRON ENDWALL

Addendum No. 01
ID 1661-05-78
Revised Sheet 233
January 6, 2016

NOTE: ALL ITEMS AND QUANTITIES ON THIS SHEET ARE FOR ENGINEER ESTIMATE CATEGORY 0010 UNLESS OTHERWISE NOTED.

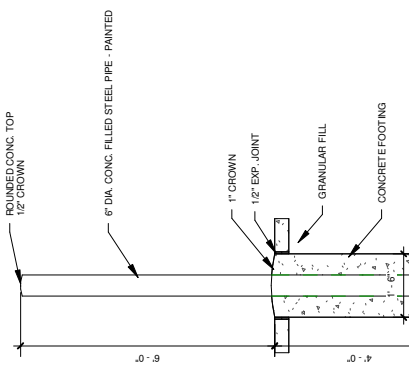
ALL USH 18 STATIONING BASED OFF USH 18 EB ALIGNMENT UNLESS OTHERWISE SPECIFIED.

Addendum No. 01
 ID 1661-05-80
 Revised Sheet 5
 January 6, 2016



* If both closer and latch are provided
 ** If closer provided

2 DOOR CLEARANCES - ANSI A117.1 606
 A1.0/NTS



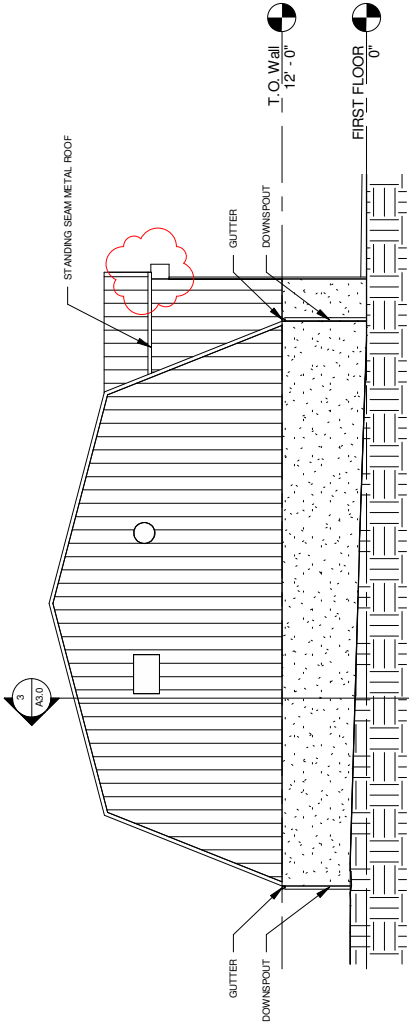
3 BOLLARD DETAIL
 A1.0/NOT TO SCALE

1 FIRST FLOOR
 A1.0/1/16" = 1'-0"

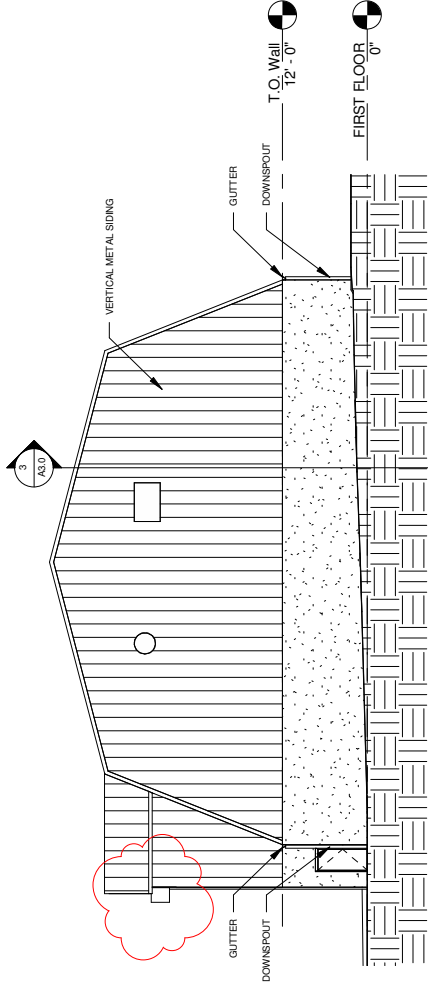
Door Schedule

Mark	Description	Width	Height	Thickness	Comments
101A	Rollup Door w/ Fiberglass Frames	8'-0"	7'-0"	1-3/4"	Stainless Steel Lockset, Weatherstrip, Self Sweep
101B	Fiberglass Door w/ Fiberglass Frames	8'-0"	7'-0"	1-3/4"	Stainless Steel Lockset, Weatherstrip, Self Sweep
101C	Overhead Rolling Door - Exterior mounted	20'-0"	28'-0"	58"	Galvanized Hardware, 3 HP Power Operator w/ interior push button control, Weather Stripping, Exterior face of wall mounted hood
101D	Overhead Rolling Door - Exterior mounted	20'-0"	28'-0"	58"	Galvanized Hardware, 3 HP Power Operator w/ interior push button control, Weather Stripping, Exterior face of wall mounted hood

2



2 NORTH ELEVATION
A2.0 / 1/16" = 1'-0"



3 SOUTH ELEVATION
A2.0 / 1/16" = 1'-0"

Addendum No. 01
ID 1661-05-80
Revised Sheet 7
January 6, 2016

2

PROJECT NO: 1661-05-80
HWY: SALT STORAGE FACILITY
FILE NAME: I:\WORKING\DRAWING\ASSEMBLY\COUNTY.PDC_SALT FACILITY 2015\CAD FILES\DWG FILES\DWG LAYOUT - BLUEBOOK.DWG DETAIL BORDER.DWG

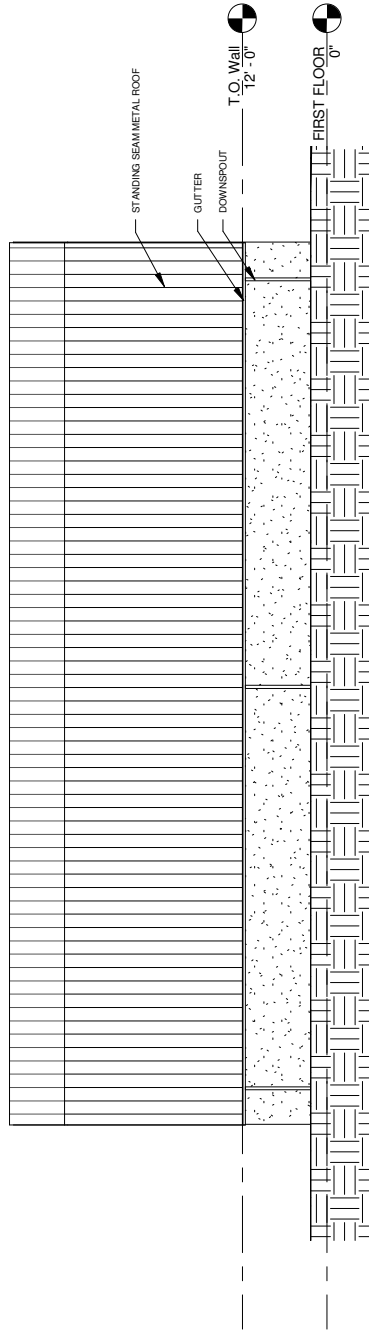
COUNTY: CRAWFORD
DRAWING NAME: ELEVATIONS

PLOT BY: RING, ANDREA
PLOT DATE: 1/16/2016
PLOT TIME: 10:55:00 AM

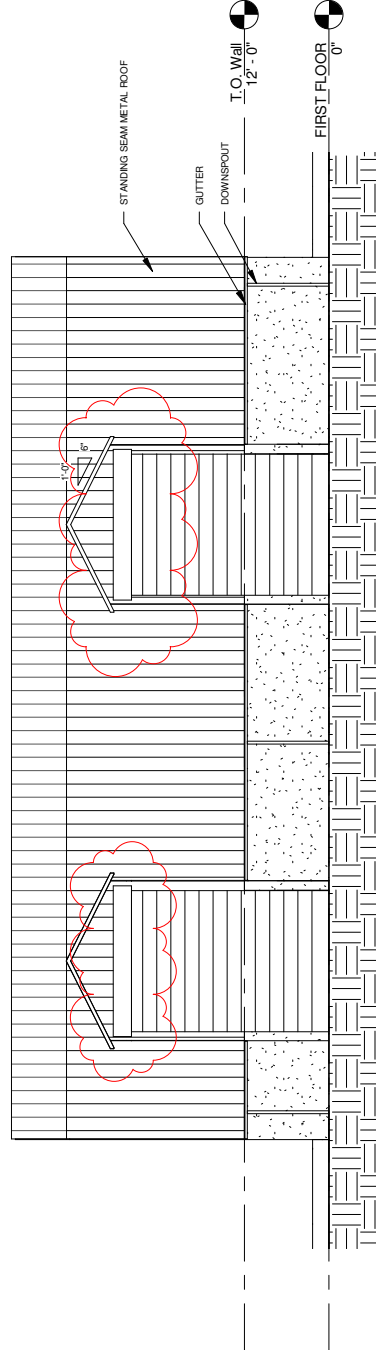
PLOT SCALE: 1" = 1'

SHEET: 7 E

Addendum No. 01
 ID 1661-05-80
 Revised Sheet 8
 January 6, 2016

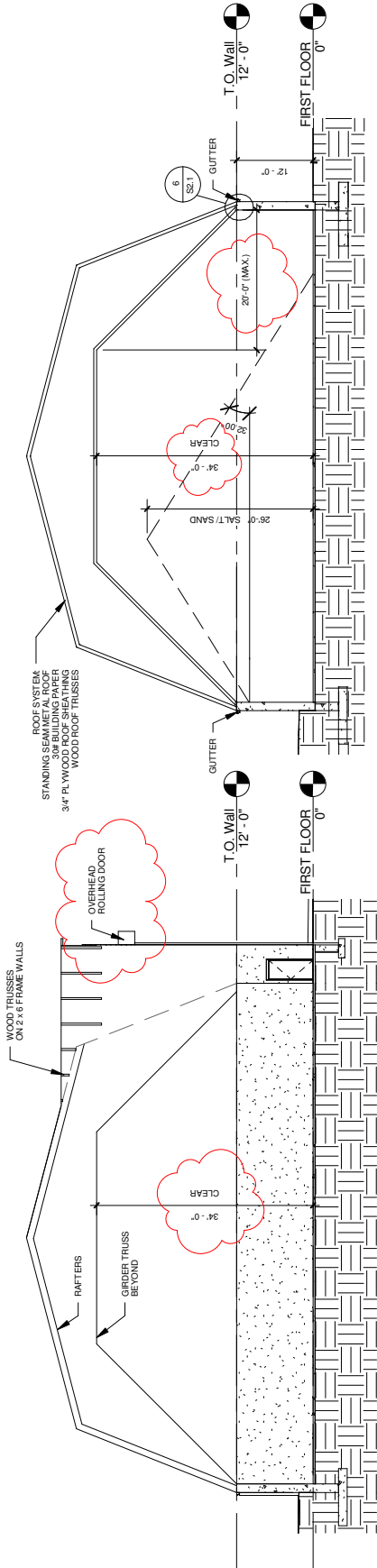


1 EAST ELEVATION
 A2.1 1/16" = 1'-0"



2 WEST ELEVATION
 A2.1 1/16" = 1'-0"

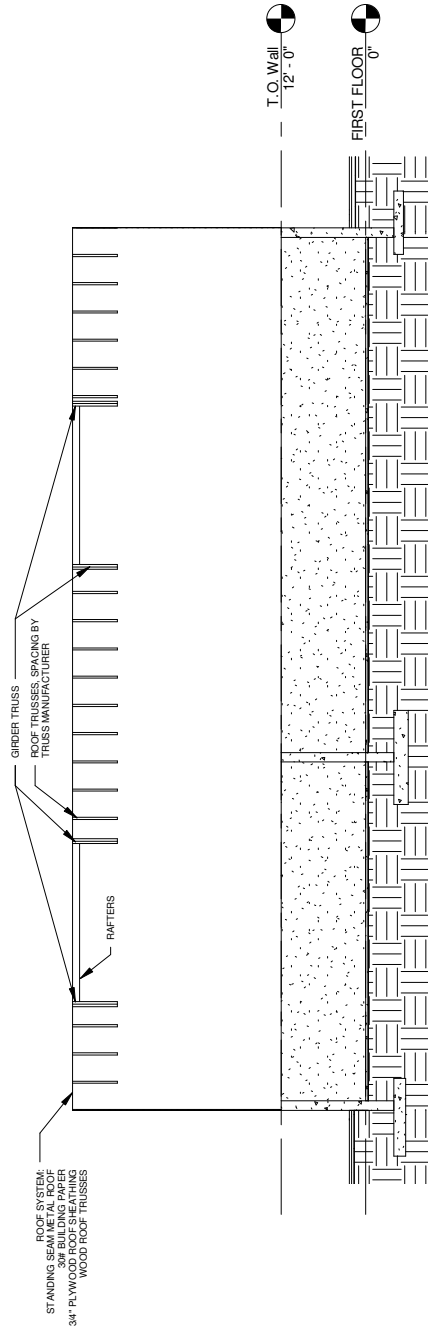
2



2 SECTION B
A3.0 / 1/16" = 1'-0"

1 SECTION A
A3.0 / 1/16" = 1'-0"

Addendum No. 01
ID 1661-05-80
Revised Sheet 9
January 6, 2016



3 Section C
A3.0 / 1/16" = 1'-0"

2

PROJECT NO:1661-05-80

HWY: SALT STORAGE FACILITY

COUNTY: CRAWFORD

DRAWING NAME: SECTIONS

SHEET: 9

E

FILE NAME : \\S:\PROJECTS\1661-05-80\HWY: SALT STORAGE FACILITY\2015\CAD FILES\DWG FILES\01 LAYOUT - BLUEBOOK.DWG
 LAYOUT : BLUEBOOK.DWG DETAIL BORDER.DWG

DATE PLOT : 1/16/2016 10:58:58 AM
 PLOT BY : RING, AMBERA

PLOT SCALE : 1" = 1'

SCHEDULE OF ITEMS

REVISED:

CONTRACT:
20160112004

PROJECT(S):
1661-05-78
1661-05-80
1661-05-88

FEDERAL ID(S):
WISC 2016002
N/A
N/A

CONTRACTOR : _____

LINE NO	ITEM DESCRIPTION	APPROX. QUANTITY AND UNITS	UNIT PRICE		BID AMOUNT	
			DOLLARS	CTS	DOLLARS	CTS
3040	SPV.0090 Special 10. Casing Pipe Reinforced Concrete Class III 30-Inch	158.000 LF
3050	SPV.0090 Special 11. Post Construction Televising Sanitary Sewer	1,052.000 LF
3060	SPV.0090 Special 12. Post Construction Televising Casing Pipe	158.000 LF
3070	SPV.0105 Special 01. Crawford County Storage Shed	LUMP	LUMP	.	.	.
3080	SPV.0105 Special 02. Concrete Pavement Joint Layout	LUMP	LUMP	.	.	.
3090	SPV.0165 Special 01. Wall Modular Block Mechanically Stabilized Earth LRFD **p**	940.000 SF
3100	SPV.0180 Special 01. Geogrid Reinforcement	41,061.000 SY
3110	511.1100 Temporary Shoring	2,104.000 SF
	SECTION 0001 TOTAL				.	.
	TOTAL BID				.	.