



Wisconsin Department of Transportation

February 3, 2016

Division of Transportation Systems Development

Bureau of Project Development
4802 Sheboygan Avenue, Rm 601
P O Box 7916
Madison, WI 53707-7916

Telephone: (608) 266-1631
Facsimile (FAX): (608) 266-8459

NOTICE TO ALL CONTRACTORS:

Proposal #07: 3898-00-70, WISC 2016 015
CTH G – CTH SS
(Shaw Brook Bridge B-14-0216)
CTH S
Dodge County

3906-00-72, WISC 2016 016
Lowell – STH 26
(Pratt Creek Bridge B-14-0217)
CTH KW
Dodge County

Letting of February 9, 2016

This is Addendum No. 01, which provides for the following:

Plan Sheets

Revised Plan Sheets	
Plan Sheet	Plan Sheet Title (brief description of changes to sheet)
45	(3898-00-70) Added reinforcing detail for concrete bearing closure for Structure B-14-216
46	(3906-00-72) Added reinforcing detail for concrete bearing closure for Structure B-14-217

Plan Sheets

The following 8½ x 11-inch sheets are attached and made part of the plans for this proposal:
Revised: 45 (3898-00-70), 46 (3906-00-72)

The responsibility for notifying potential subcontractors and suppliers of these changes remains with the prime contractor.

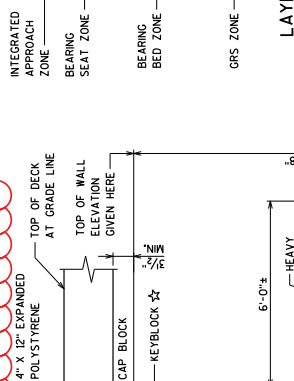
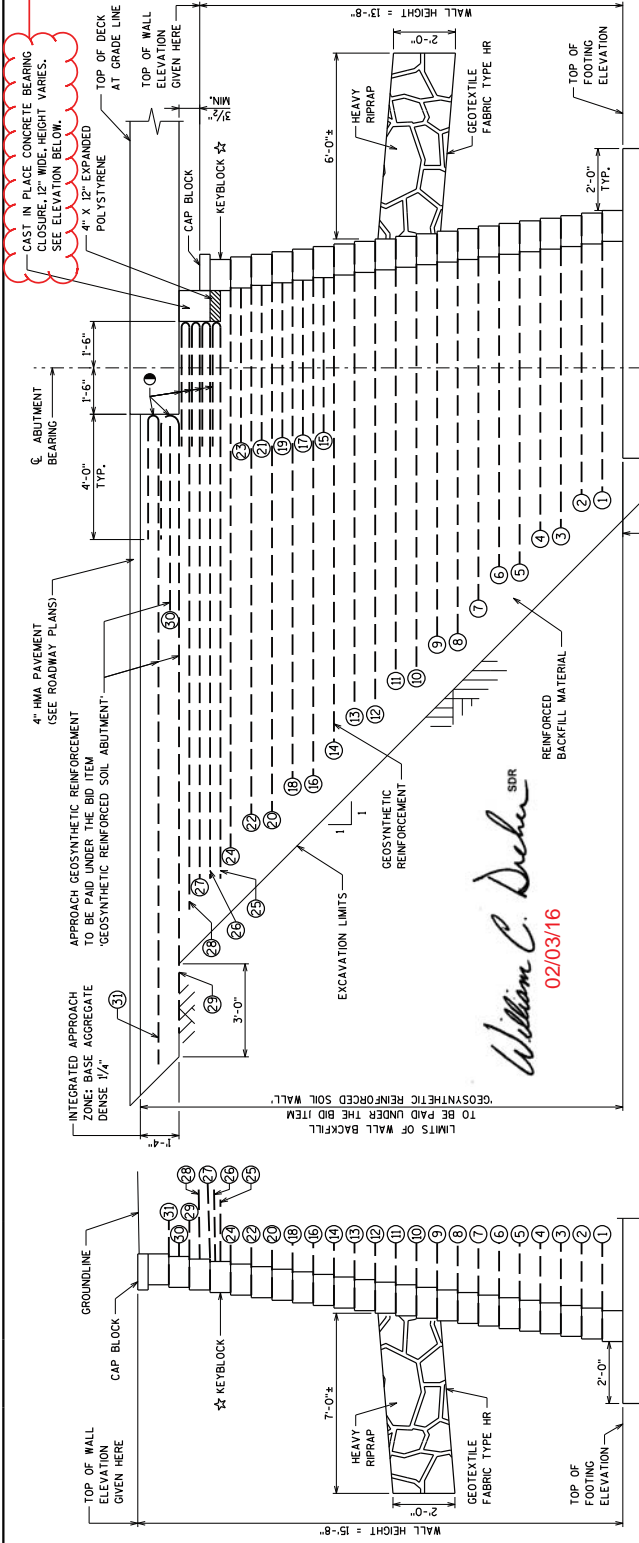
Sincerely,

Mike Coleman

Proposal Development Specialist
Proposal Management Section

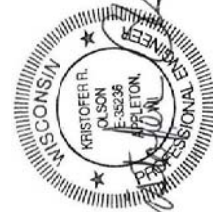
END OF ADDENDUM

MODIFIED NOTE

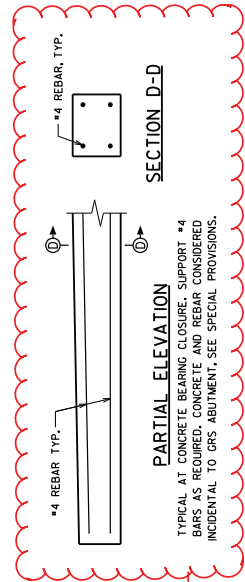


GRS WALL INFORMATION

LAYER NUMBER	MINIMUM LENGTH OF GEOTEXTILE FABRIC (FT.)	WEST ELEV. #	EAST ELEV. #
1	9	800.80	800.83
2	9	801.46	801.49
3	10	802.13	802.16
4	10	802.80	802.83
5	11	803.46	803.49
6	11	804.13	804.16
7	12	804.80	804.83
8	12	805.46	805.49
9	13	806.13	806.16
10	14	806.80	806.83
11	14	807.46	807.49
12	15	808.13	808.16
13	15	808.80	808.83
14	16	809.46	809.49
15	5	809.80	809.83
16	17	810.13	810.16
17	5	810.46	810.49
18	17	810.80	810.83
19	5	811.13	811.16
20	18	811.46	811.49
21	5	811.80	811.83
22	18	812.13	812.16
23	5	812.46	812.49
24	19	812.80	812.83
25	18	813.13	813.16
26	18	813.46	813.49
27	18	813.80	813.83
28	19	814.13	814.16
29	20	814.46	814.49
30	6	814.80	814.83
31	21	815.13	815.16

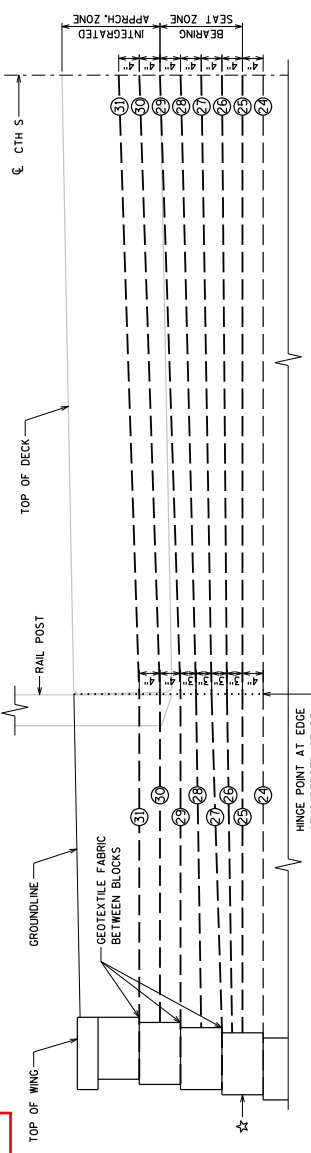


- NOTES:**
- ☆ KEYBLOCK FRONT FACE OF KEY BLOCK LOCATION TO BE HELD REGARDLESS OF MODULAR BLOCK SIZE OR BATTER.
 - ⊗ INDICATES GEOSYNTHETIC REINFORCEMENT LAYER NUMBER, FOR LENGTHS, SEE 'GRS WALL INFORMATION' TABLE.
 - 4'-0" WRAP
 - * LENGTH MEASURED FROM FRONT FACE OF MODULAR BLOCKS TO END OF GEOTEXTILE FABRIC. (DOES NOT INCLUDE WRAPPED GEOTEXTILE FABRIC WHERE APPLICABLE.)



SECTION B-B

ADDED REINFORCING



**Addendum No. 01
ID 3898-00-70
Revised Sheet 45
February 3, 2016**

STATE OF WISCONSIN
DEPARTMENT OF TRANSPORTATION
STRUCTURE B-14-216

GRS-IBS
ABUTMENT
DETAILS

REVISION
NO. DATE

BY

DATE

BY

DATE

BY

DATE

BY

DATE

BY

DATE

BY

DATE

BY

DATE

BY

DATE

BY

DATE

BY

DATE

BY

DATE

BY

DATE

BY

DATE

BY

DATE

BY

DATE

BY

DATE

BY

DATE

BY

DATE

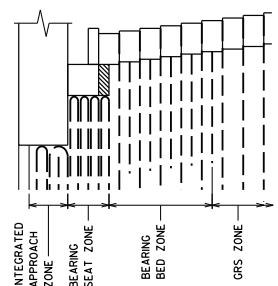
BY

DATE

BY

STATE PROJECT NUMBER
3906-00-72

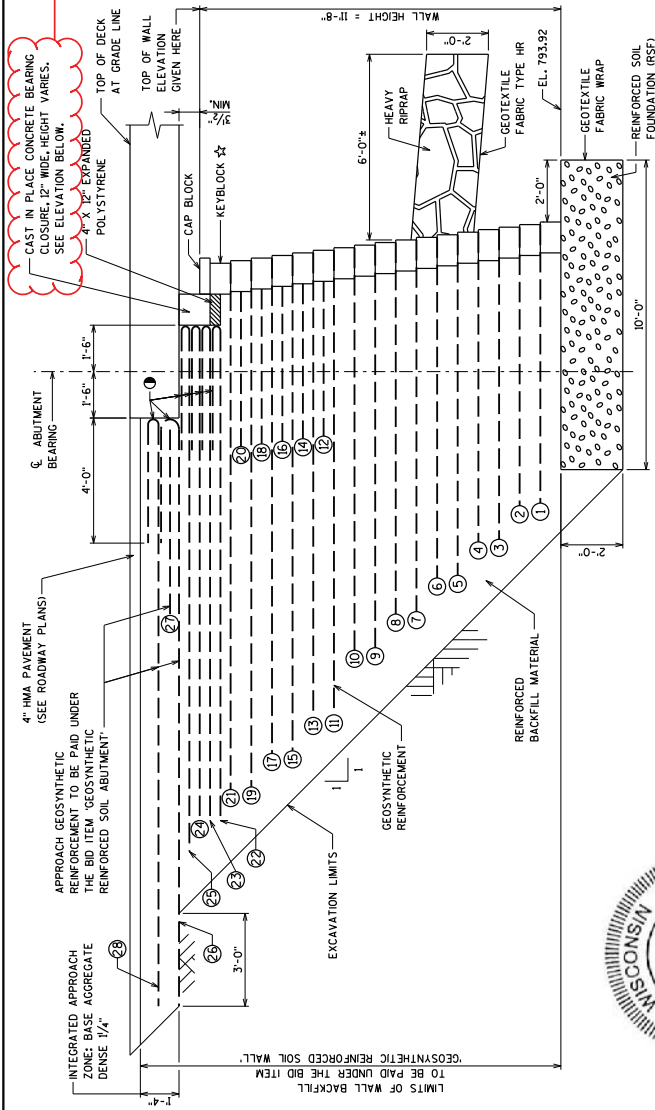
MODIFIED NOTE



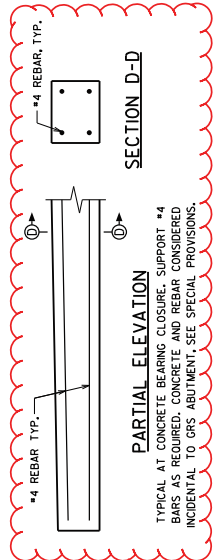
LAYER DESCRIPTIONS

GRS WALL INFORMATION

LAYER NUMBER	MINIMUM LENGTH* OF GEOTEXTILE FABRIC (FT.)	ELEV. #
1	9	794.59
2	9	795.26
3	10	795.93
4	10	796.60
5	11	797.27
6	11	797.94
7	12	798.61
8	12	799.28
9	13	799.95
10	13	800.62
11	15	801.29
12	5	801.96
13	15	802.63
14	5	803.30
15	16	803.97
16	5	804.64
17	16	805.31
18	5	805.98
19	17	806.65
20	5	807.32
21	17	807.99
22	16	808.66
23	16	809.33
24	16	809.99
25	17	810.66
26	19	811.33
27	6	811.99
28	19	812.66



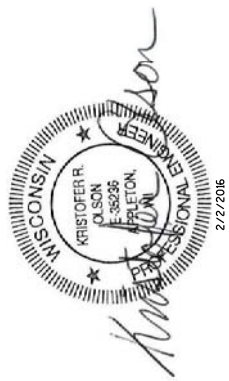
SECTION A-A



PARTIAL ELEVATION

TYPICAL AT CONCRETE BEARING CLOSURE. SUPPORT #4 REBAR AS REQUIRED. HEIGHT AND REBAR CONSIDERED INCIDENTAL TO GRS ABUTMENT. SEE SPECIAL PROVISIONS.

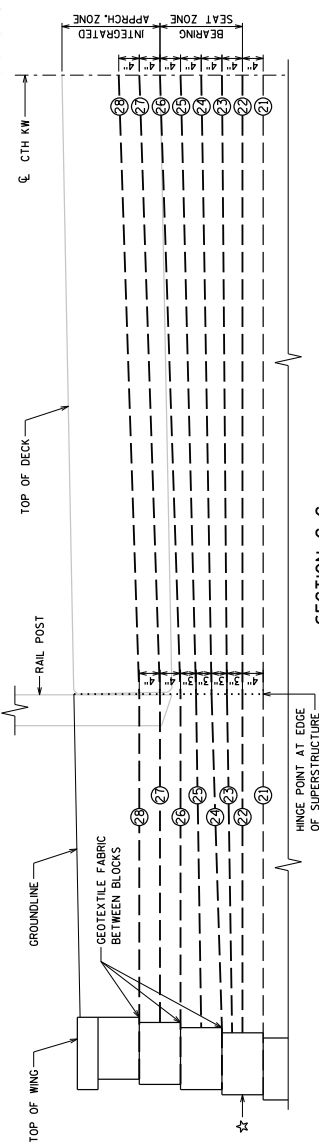
ADDED REINFORCING



SECTION B-B

William C. Decker SDR
02/03/16

Addendum No. 01
ID 3906-00-72
Revised Sheet 46
February 3, 2016



SECTION C-C

FROM KEYBLOCK UP, SHOWING VARYING LAYER THICKNESSES TO ACCOMMODATE CROWN.

- NOTES:**
- ★ KEYBLOCK: FRONT FACE OF KEY BLOCK LOCATION TO BE HELD REGARDLESS OF MODULAR BLOCK SIZE OR BATTER.
 - ⊗ INDICATES GEOSYNTHETIC REINFORCEMENT LAYER NUMBER. FOR LENGTHS, SEE "GRS WALL INFORMATION" TABLE.
 - 4'-0" WRAP
 - * LENGTH MEASURED FROM FRONT FACE OF MODULAR BLOCK TO END OF GEOTEXTILE FABRIC. (DOES NOT INCLUDE WRAPPED GEOTEXTILE FABRIC WHERE APPLICABLE.)

NO.	DATE	ADDED REINFORCING	BY
1	2/22/16		BRE

STATE OF WISCONSIN
DEPARTMENT OF TRANSPORTATION

STRUCTURE B-14-217

GRS-IBS
ABUTMENT
DETAILS

46