



Wisconsin Department of Transportation

March 1, 2016

Division of Transportation Systems Development

Bureau of Project Development
 4802 Sheboygan Avenue, Rm 601
 P O Box 7916
 Madison, WI 53707-7916

Telephone: (608) 266-1631
 Facsimile (FAX): (608) 266-8459

NOTICE TO ALL CONTRACTORS:

Proposal #06: 5350-00-74, WISC 2016 049
Beloit Urbanized Area
Cranston Road Intersection
USH 51
Rock County

Letting of March 8, 2016

This is Addendum No. 01, which provides for the following:

Special Provisions

Revised Special Provisions	
Article No.	Description
6	Utilities

Schedule of Items

Revised Bid Item Quantities					
Bid Item	Item Description	Unit	Old Quantity	Revised Quantity	Proposal Total
625.0100	Topsoil	SY	7520	-980	6540
627.0200	Mulching	SY	3,500	-1,250	2,250
628.2004	Erosion Mat Class I Type B	SY	31,735	-28,094	3,641
629.0210	Fertilizer Type B	CWT	6.4	-0.8	5.6
630.0130	Seeding Mixture No. 30	LB	165	-20	145
630.0200	Seeding Temporary	LB	248	-30	218
SPV.0120.01	Water for Seeded Areas	MGAL	915	-105	810

Added Bid Item Quantities					
Bid Item	Item Description	Unit	Old Quantity	Revised Quantity	Proposal Total
201.0120	Clearing	ID	0	50	50

Deleted Bid Item Quantities					
Bid Item	Item Description	Unit	Old Quantity	Revised Quantity	Proposa l Total
201.0105	Clearing	STA	20	-20	0
204.0235.01	Removing Buildings Parcel 1 TPP 5350-00-23	LS	1	-1	0
204.0240.01	Site Clearance Parcel 1 TPP 5350-00-23	LS	1	-1	0

Plan Sheets

Revised Plan Sheets	
Plan Sheet	Plan Sheet Title (brief description of changes to sheet)
31	Erosion Control - Remove finishing area for Parcel 1, due to building removal and site clearance bid items being removed from the contract.
85	Miscellaneous Quantities - Remove clearing by Sta. and add clearing by ID
86	Miscellaneous Quantities - Remove building removal and site clearance bid items
93	Miscellaneous Quantities - Revise quantity for item 628.2004
94	Miscellaneous Quantities - Remove mulching for site clearance, as well as removing finishing items for Parcel 1.

The responsibility for notifying potential subcontractors and suppliers of these changes remains with the prime contractor.

Sincerely,

Mike Coleman

Proposal Development Specialist
Proposal Management Section

ADDENDUM NO. 01

5350-00-74

March 1, 2016

Special Provisions

6. Utilities

Replace entire article language with the following:

This contract comes under the provision of Wisconsin Administrative Code Ch. Trans 220.

There are known utility facilities located near or within the project limits. Coordinate construction activities by calling Diggers Hotline and/or a direct call to the utilities known to have facilities in the area as required by state statutes. Use caution to ensure the integrity of utility facilities at all times.

Some of the utility work described below is dependent on prior work being performed by the contractor at a specific site. In such situations, provide the engineer and the affected utility a good faith notice of when the utility is to start work at the site. Provide this notice 14 to 16 calendar days in advance of when the prior work will be completed and the site will be available to the utility owner. Follow-up with a confirmation notice to the engineer and the utility owner not less than three working days before the site will be ready for the utility owner to begin its work.

Alliant Energy (Electric) has overhead facilities along the east side of USH 51 (approximately 42' RT) throughout the project limits, including several overhead roadway crossings.

Alliant Energy plans to relocate their existing overhead facilities located along the east side of USH 51 to the new roadway terrace between the eastern sidewalk and concrete curb and gutter. Existing Alliant Energy poles located along the west side of USH 51 between Station 93+00 LT and Station 100+50 LT are planned to be relocated outside the 18-foot roadway clear zone. In addition, existing guy wire supports within the 18-foot roadway clear zone are planned to be relocated.

Coordination is required between Alliant Energy, AT&T Wisconsin and Charter Communications for these planned relocations.

The location of the planned pole relocation near Station 100+05, 45' LT was undetermined at the time these Utility Special Provisions were developed as Alliant Energy reviewed underground/overhead service alternatives to the adjacent properties. Contact Alliant Energy before beginning work under this contract to coordinate the final facility locations.

Contact Alliant Energy a minimum of 7 calendar days before beginning work near any poles requiring temporary stabilization based on planned construction activities.

The estimated time for relocation activities is 4 to 6 weeks. Alliant Energy relocations are anticipated to be completed before construction. With some relocation work being done during construction.

Alliant Energy (Gas) has underground facilities running parallel to USH 51 along the east side of the roadway (approximately 45' to 47' RT) adjacent to the existing sidewalk within the project limits, including several service crossings of USH 51 (Station LT and RT).

Alliant Energy plans to relocate their existing underground facility located along the east side of USH 51 within the new eastern roadway terrace between approximately Station 93+50 RT and Station 96+25 RT and approximately Station 107+75 RT and Station 110+25 RT. The gas main

relocation between approximately Station 96+25 RT and Station 107+75 RT is planned to be located below the new eastern sidewalk.

In addition to the relocated gas main facility, an additional gas main is planned to be installed along the west side of USH 51 near the roadway right-of-way.

New lateral services are planned to be installed throughout the project limits (Station LT and RT). Lateral services crossing USH 51 are planned to be installed at a depth below the new storm sewer installed as part of this contract.

Use caution when installing storm sewer pipes near gas mains and lateral services.

The estimated time for relocation activities is 4 to 6 weeks. Alliant Energy relocations are anticipated to be completed before construction with some relocation work being done during construction.

AT&T Wisconsin (Communications) has overhead facilities throughout the project corridor along the west side of USH 51 (approximately 41' LT to 47' LT) and use Alliant Energy power poles and AT&T Wisconsin utility poles as attachments. Overhead facilities are also present along the east side of USH 51 between Station 92+00 and Station 97+40 (approximately 42' RT), and use Alliant Energy power poles as attachments.

AT&T Wisconsin plans to transfer their existing overhead facilities located along the west side of USH 51 to new AT&T Wisconsin and Alliant Energy poles between Station 92+11, 45' LT and Station 98+78, 46' LT.

Overhead facility transfers involving AT&T Wisconsin poles:

Planned AT&T Pole Removal Locations	Planned AT&T Pole Installation Locations
Station 92+09, 41' LT	Station 92+11, 45' LT
Station 93+27, 40' LT	Station 93+25, 45' LT
Station 97+19, 42' LT	Station 97+20, 46' LT

Overhead facility transfers involving Alliant Energy poles:

Planned Alliant Energy Pole Removal Locations	Planned Alliant Energy Pole Installation Locations
Station 94+40, 42' LT	Station 94+69, 46' LT
Station 95+06, 43' LT	---
Station 95+73, 42' LT	Station 95+78, 46' LT
Station 96+69, 44' LT	Station 96+76, 46' LT
Station 98+63, 45' LT	Station 98+64, 46' LT
Station 100+05, 45' LT	Station 99+78, 46' LT

AT&T Wisconsin plans to transfer their existing overhead facility located along the east side of USH 51 to new Alliant Energy poles between Station 93+25, 43' RT and Station 97+36, 51' RT. A new AT&T Wisconsin anchor and down guy wire will be placed near Station 97+48, 51' RT. AT&T Wisconsin does not plan on transferring their overhead facility to the new Alliant Energy pole at Station 105+13, 49' LT, and the cable span crossing USH 51 is planned to be re-tensioned to maintain adequate clearance over USH 51. AT&T Wisconsin will remove the down guy wire and anchor at Station 111+07, 44' RT. AT&T Wisconsin plans on removing the overhead cable crossing at Station 110+80.

Coordination is required between AT&T Wisconsin, Alliant Energy, and Charter Communications for these planned transfers.

Contact AT&T Wisconsin a minimum of 7 calendar days before beginning work near any poles requiring temporary stabilization based on planned construction activities.

The estimated time for relocation activities is 4 weeks. AT&T Wisconsin relocations are anticipated to be completed before construction.

Charter Communications (Communications) has overhead facilities throughout the project corridor on both the west and east sides of USH 51 and use Alliant Energy power poles and AT&T Wisconsin utility poles as attachments. Refer to Alliant Energy and AT&T Wisconsin utility descriptions for additional information.

Charter Communications plans to relocate their facilities in conjunction with the planned Alliant Energy and AT&T Wisconsin utility relocations. Refer to Alliant Energy and AT&T Wisconsin relocation plans to address identified conflicts for additional information.

Coordination is required between Charter Communications, AT&T Wisconsin, and Alliant Energy for these planned relocations.

The estimated time for relocation activities is 3 to 4 weeks once Alliant Energy and AT&T Wisconsin utility poles are relocated. Charter Communication relocations are anticipated to be completed before construction.

Town of Beloit (Sanitary Sewer) has a sanitary sewer force main that parallels USH 51 along the west side of the roadway (approximately 30' to 35' LT) within the project limits. A sanitary sewer lift station is located in line with the sanitary sewer force main approximately 240 feet north of Weirick Avenue on the west side of USH 51. A sanitary sewer gravity trunkline parallels USH 51 along the east side of the roadway (approximately 29' to 36' RT) with sanitary sewer laterals servicing properties along the east side of USH 51 within the project limits. A sanitary sewer trunkline parallels both Cranston Road and Weirick Avenue near their respective roadway centerlines.

No conflicts are anticipated to the sanitary sewer force main or associated sanitary sewer lift station along the west side of USH 51. Roadside protection of the sanitary sewer lift station will be included as part of this contract. No conflicts are anticipated to the sanitary sewer gravity trunkline along the east side of USH 51.

Town of Beloit sanitary sewer manholes will be adjusted or reconstructed as part of this contract under bid item Adjusting Manhole Covers or Reconstructing Manholes.

Town of Beloit (Sanitary Sewer) contact is Howard Hemmer, 3629 S Walters Road, Beloit, WI 53511, (608) 751-3493 or e-mail hhemmer@town.beloit.wi.us.

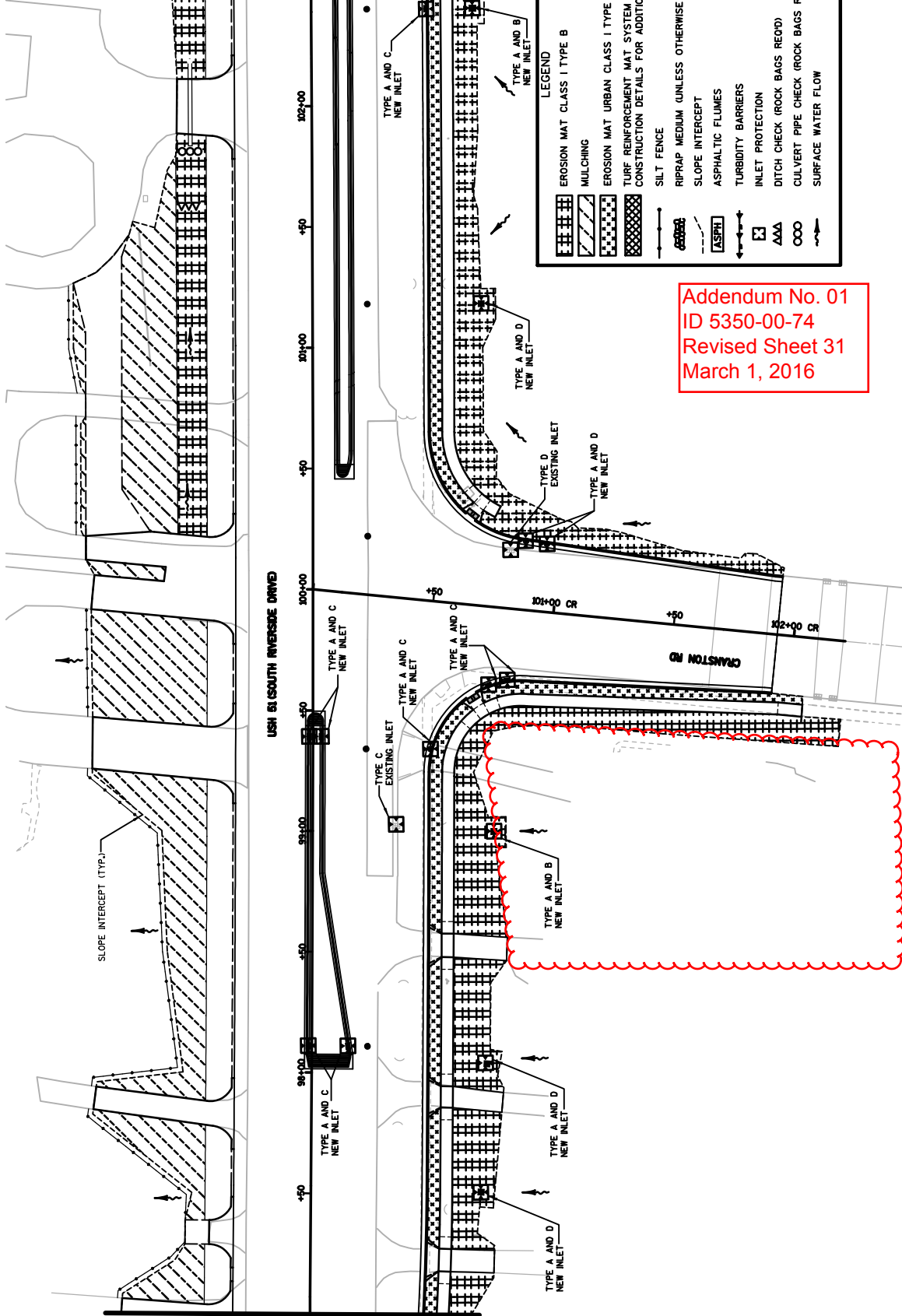
Schedule of Items

Attached, dated March 1, 2016 are the revised Schedule of Items Pages 1 – 21.

Plan Sheets

The following 8½ x 11-inch sheets are attached and made part of the plans for this proposal:
Revised: 31, 85, 86, 93 and 94.

END OF ADDENDUM



LEGEND

	EROSION MAT CLASS I TYPE B
	MULCHING
	EROSION MAT URBAN CLASS I TYPE A
	TURF REINFORCEMENT MAT SYSTEM (REFER TO CONSTRUCTION DETAILS FOR ADDITIONAL INFORMATION)
	SILT FENCE
	RIPRAP MEDIUM (UNLESS OTHERWISE NOTED)
	SLOPE INTERCEPT
	ASPHALTIC FLUMES
	TURBIDITY BARRIERS
	INLET PROTECTION
	DITCH CHECK (ROCK BAGS REOD)
	CULVERT PIPE CHECK (ROCK BAGS REOD)
	SURFACE WATER FLOW

Addendum No. 01
 ID 5350-00-74
 Revised Sheet 31
 March 1, 2016

Addendum No. 01
ID 5350-00-74
Revised Sheet 85
March 1, 2016

REMOVING SMALL PIPE CULVERTS

CATEGORY	STATION	OFFSET	REMARKS
0000	93+30	33.7' RT	18" X 38" CPCS
	94+00	33.7' RT	18" X 38" CPCS
	94+95	33.7' RT	18" X 38" CPCS
	95+20	33.7' RT	18" X 26" CPCS
	95+92	33.9' RT	18" X 26" CPCS
	95+98	40.1' RT	18" X 14" CPCS
	97+44	46.0' RT	24" X 18" CPCS; PARTIAL PIPE REMOVAL
	97+92	35.7' RT	18" X 26" CPCS; PARTIAL PIPE REMOVAL
	101+26	42.8' RT	18" X 26" CPCS
	103+00	35.4' RT	24" X 30" CPCS
	103+78	44.4' LT	18" X 18" CPCS
	104+55	39.3' RT	18" X 15" CPCS
	104+59	39.5' LT	18" X 24" CPCS
	105+45	35.2' RT	18" X 93' CPCS
	106+00	41.0' LT	15" X 21" CPCS
	106+16	39.6' RT	30" X 15" CPCS
	106+20	39.7' RT	30" X 15" CPCS
	106+14	30.7' RT	24" X 38" X 66" CPRC
	106+20	30.7' RT	24" X 38" X 66" CPRC
	107+34	34.8' RT	18" X 25" CPCS
	108+67	36.7' RT	18" X 21" CPCS
	108+95	41.5' RT	18" X 13" CPCS
	109+85	34.3' RT	18" X 25" CPCS
	110+67	34.5' RT	18" X 26" CPCS
	TOTAL		25

CLEARING AND GRUBBING

CATEGORY	STATION	OFFSET	REMARKS
0000	94+00	---	17
	101+00 CR	---	1
	10+00 CR	---	2
	UNDISTRIBUTED	50	---
	TOTALS	50	20

ABANDONING SEWER

CATEGORY	STATION	OFFSET	REMARKS
0000	97+44	36.3' RT - 44.7' LT	9.5
	TOTALS		9.5

REMOVING PAVEMENT

CATEGORY	STAGE	STATION - STATION	LOCATION	SY
0000	STAGE 1	109+78 - 112+16	LT	70
		SUBTOTAL (STAGE 1)		70
	STAGE 2	94+00 - 111+00	RT	1,340
		100+46 CR - 101+92 CR	RT/LT	805
		SUBTOTAL (STAGE 2)		2,145
	STAGE 3	103+65 - 103+87	LT	57
		SUBTOTAL (STAGE 3)		57
	TOTAL			2,272

CATEGORY	STATION	OFFSET	REMARKS
0000	97+44	50.7' LT	1
	TOTAL		1

EARTHWORK SUMMARY

DIVISION	CATEGORY	STAGE	STATION - STATION	LOCATION	CY	CY	CY	CY	CY	TON
1	0000	US 51 STAGE 1	90+50 - 113+50	MAINLINE	484	24	0	484	49	61
2	0000	US 51 STAGE 2	90+50 - 113+50	MAINLINE	2,043	102	1,682	1,682	1,223	1,516
	0000	CRANSTON ROAD	100+47 CR - 101+92 CR	SIDEROAD	2,937	15	203	94	95	119
		SUBTOTALS (DIVISION 2)			2,340	117	564	1,776	1,508	1,635
3	0000	US 51 STAGE 3	90+50 - 113+50	MAINLINE	1,942	97	0	1,942	40	513
	0000	DRAINAGE DITCH	10+46 D - 14+79 D	DITCH	465	23	0	465	4	5
		SUBTOTALS (DIVISION 3)			2,407	120	0	2,407	44	518
		TOTALS			5,231	261	564	4,667	1,771	2,214

- 1) EXCAVATION COMMON IS THE SUM OF THE CUT AND EBS EXCAVATION COLUMNS. ITEM NUMBER 205-0100.
- 2) UNUSABLE PAVEMENT MATERIAL IS INCLUDED IN CUT.
- 3) EBS EXCAVATION TO BE BACKFILLED WITH BASE AGGREGATE DENSE 3-INCH.
- 4) AVAILABLE MATERIAL = CUT - UNUSABLE PAVEMENT MATERIAL.
- 5) EXCAVATED EBS MATERIAL IS UNUSABLE IN FILLS OUTSIDE THE 1:1 SLOPE.
- 6) EXPANDED FILL = UNEXPANDED FILL * EXPANDED FILL FACTOR = 1.25.
- 7) MASS ORDNATE: MASS ORDNATE = (CUT - UNUSABLE PAVEMENT MATERIAL) - (FILL * FILL FACTOR).
- 8) USED FOR BACKFILL OF EBS.

* ADDITIONAL QUANTITIES LOCATED ELSEWHERE

REMOVING CURB AND GUTTER

204.0160	
CATEGORY	STATION - STATION LOCATION
0010	105+08 - 105+88 RT
TOTAL 85	

REMOVING CONCRETE SIDEWALK

204.0165	
CATEGORY	STATION - STATION LOCATION SY
0010	93+22 - 100+00 RT 260
	100+00 - 110+61 RT 425
	100+50 CR - 102+06 CR RT 87
TOTAL 772	

REMOVING GUARDRAIL

204.0165	
CATEGORY	STATION - STATION OFFSET LF
0010	107+45 - 108+43 LT 99
	100+47 CR - 100+66 CR LT 26
TOTAL 125	

REMOVING FENCE

204.0170	
CATEGORY	STATION - STATION OFFSET LF
0010	101+7 CR - 102+18 CR 36 RT 10

REMOVING DELINEATORS AND MARKERS

204.0180	
CATEGORY	STATION OFFSET LOCATION
0010	100+00 - 108+00 RT 10 ALONG EDGE LINE
	106+17 LT 2 CULVERT END MARKER
TOTAL 12	

REMOVING MASONRY

204.0185	
CATEGORY	STATION LOCATION CY
0010	100+71 RT 3.7
	106+17 RT 4.9
TOTAL 8.6	

REMOVING CONCRETE BASES

204.0195	
CATEGORY	LOCATION EQUIP. LOCATION STATION LOCATION EACH
0010	USH 51 & CRANSTON ROAD
	PRIVATE 95+27 54 RT 1
	101+86 50 LT 1
	EXCB-1 102+13 46 LT 1
	EXCB-2 101+33 30 LT 1
	EXCB-3 99+48 42 RT 1
	EXCB-4 100+82 CR 25 RT 1
	EXCB-5 100+71 CR 28 LT 1
	EXCB-6 100+56 39 RT 1
	EXCB-1 100+39 63 RT 1
TOTAL 10	

REMOVING RESIDENTIAL LIGHT POLE

204.9060.S.01	
CATEGORY	STATION LOCATION EACH
0010	95+27 54 RT 1
	98+22 49 LT 1
TOTAL 2	

REMOVING BRICK PILLAR

204.9060.S.02	
CATEGORY	STATION LOCATION EACH
0010	107+26 55 RT 1
	107+50 55 RT 1
TOTAL 2	

REMOVING MANHOLES

204.0210	
CATEGORY	STATION OFFSET EACH
0010	99+02 38.2 RT 1

REMOVING INLETS

204.0220	
CATEGORY	STATION OFFSET EACH
0010	99+02 34.6 RT 1
	100+80 CR 24.1 LT 1
TOTAL 2	

REMOVING LANDSCAPING BLOCKS

204.9090.S.01	
CATEGORY	STATION-STATION LOCATION LF
0010	97+32 - 97+34 63 RT 15

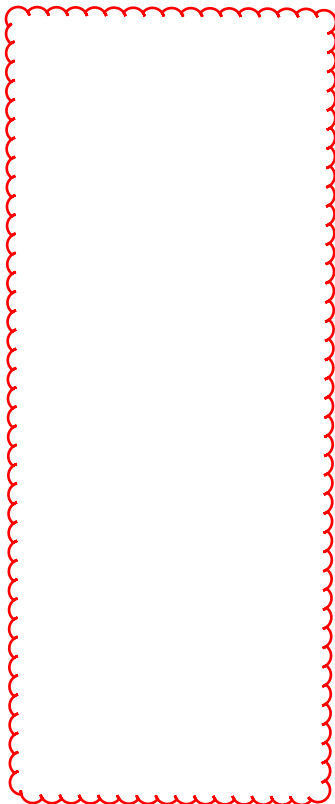
REMOVING RESIDENTIAL DECORATIVE FENCE

204.9090.S.02	
CATEGORY	STATION-STATION LOCATION LF
0010	103+87 - 103+90 56 LT 20

REMOVING BLOCK RETAINING WALL

204.9165.S.01	
CATEGORY	STATION-STATION LOCATION SF
0010	101+07 CR - 102+18 CR 36 RT 413

Addendum No. 01
ID 5350-00-74
Revised Sheet 86
March 1, 2016



WATER

CATEGORY	STAGE	STATION - STATION	624.0000 MGAL
0000	STAGE 1	90+50 - 100+00	1.6
		100+00 - 113+50	1.3
		SUBTOTAL (STAGE 1)	2.9
STAGE 2	STAGE 2	91+35 - 100+00	5.4
		100+00 - 113+50	5.4
		100+50 CR - 101+83 CR	0.8
		100+50 CR - 101+83 CR	0.8
		SUBTOTAL (STAGE 2)	12.4
STAGE 3	STAGE 3	91+35 - 100+00	2.6
		100+00 - 113+50	9.6
		SUBTOTAL (STAGE 3)	12.2
TOTAL			27.5

NOTE: FOR BASE AGGREGATE DENSE COMPACTION

SILT FENCE

CATEGORY	STATION - STATION	LOCATION	628.1504 MAINTENANCE LF
0000	90+47 - 100+00	LT	1,840
		100+00 - 113+62	1,460
TOTALS			3,300

MOBILIZATIONS EROSION CONTROL

CATEGORY	STAGE	MOBILIZATIONS EROSION CONTROL EACH	628.1905 EROSION EMERGENCY EROSION CONTROL EACH
0000	STAGE 1	1	3
	STAGE 2	3	3
	STAGE 3	3	3
TOTALS		7	9

INLET PROTECTION SUMMARY

CATEGORY	STATION	LOCATION	628.7005				628.7055				628.7020								
			INLET PROTECTION TYPE A EACH	INLET PROTECTION TYPE B EACH	INLET PROTECTION TYPE C EACH	INLET PROTECTION TYPE D EACH	INLET PROTECTION TYPE A EACH	INLET PROTECTION TYPE B EACH	INLET PROTECTION TYPE C EACH	INLET PROTECTION TYPE D EACH									
0000	94+00	60' RT	1	---	---	---	---	---	---	---	---	---	---	---	---	---	---	---	---
	94+09	30.5' RT	1	---	---	---	---	---	---	---	---	---	---	---	---	---	---	---	---
	94+17	30.5' RT	1	---	---	---	---	---	---	---	---	---	---	---	---	---	---	---	---
	94+26	30.5' RT	1	---	---	---	---	---	---	---	---	---	---	---	---	---	---	---	---
	94+68	55.8' RT	1	---	---	---	---	---	---	---	---	---	---	---	---	---	---	---	---
	95+44	55.1' RT	1	---	---	---	---	---	---	---	---	---	---	---	---	---	---	---	---
	96+70	65.4' RT	1	---	---	---	---	---	---	---	---	---	---	---	---	---	---	---	---
	96+70	44.7' RT	1	---	---	---	---	---	---	---	---	---	---	---	---	---	---	---	---
	97+51	70.4' RT	1	---	---	---	---	---	---	---	---	---	---	---	---	---	---	---	---
	98+04	72.6' RT	1	---	---	---	---	---	---	---	---	---	---	---	---	---	---	---	---
	98+11	1.5' LT	1	---	---	---	---	---	---	---	---	---	---	---	---	---	---	---	---
	98+11	3.5' RT	1	---	---	---	---	---	---	---	---	---	---	---	---	---	---	---	---
	99+03	35.6' RT	1	---	---	---	---	---	---	---	---	---	---	---	---	---	---	---	---
	99+62	80.4' RT	1	---	---	---	---	---	---	---	---	---	---	---	---	---	---	---	---
	99+60	72.6' RT	1	---	---	---	---	---	---	---	---	---	---	---	---	---	---	---	---
	99+34	48.7' RT	1	---	---	---	---	---	---	---	---	---	---	---	---	---	---	---	---
	99+00	75.0' RT	1	---	---	---	---	---	---	---	---	---	---	---	---	---	---	---	---
	99+39	1.5' LT	1	---	---	---	---	---	---	---	---	---	---	---	---	---	---	---	---
	99+39	3.5' RT	1	---	---	---	---	---	---	---	---	---	---	---	---	---	---	---	---
	100+16	82.9' RT	1	---	---	---	---	---	---	---	---	---	---	---	---	---	---	---	---
100+18	96.8' RT	1	---	---	---	---	---	---	---	---	---	---	---	---	---	---	---	---	
100+20	88.1' RT	1	---	---	---	---	---	---	---	---	---	---	---	---	---	---	---	---	
101+18	69.8' RT	1	---	---	---	---	---	---	---	---	---	---	---	---	---	---	---	---	
102+40	66.7' RT	1	---	---	---	---	---	---	---	---	---	---	---	---	---	---	---	---	
102+40	47.5' RT	1	---	---	---	---	---	---	---	---	---	---	---	---	---	---	---	---	
103+11	10.5' RT	1	---	---	---	---	---	---	---	---	---	---	---	---	---	---	---	---	
103+11	15.5' RT	1	---	---	---	---	---	---	---	---	---	---	---	---	---	---	---	---	
104+59	68.5' RT	1	---	---	---	---	---	---	---	---	---	---	---	---	---	---	---	---	
105+08	45.3' RT	1	---	---	---	---	---	---	---	---	---	---	---	---	---	---	---	---	
104+98	45.6' RT	1	---	---	---	---	---	---	---	---	---	---	---	---	---	---	---	---	
106+20	66.7' RT	1	---	---	---	---	---	---	---	---	---	---	---	---	---	---	---	---	
106+76	40.4' RT	1	---	---	---	---	---	---	---	---	---	---	---	---	---	---	---	---	
106+83	40.2' RT	1	---	---	---	---	---	---	---	---	---	---	---	---	---	---	---	---	
108+94	60.4' RT	1	---	---	---	---	---	---	---	---	---	---	---	---	---	---	---	---	
108+33	59.5' RT	1	---	---	---	---	---	---	---	---	---	---	---	---	---	---	---	---	
108+33	35.7' RT	1	---	---	---	---	---	---	---	---	---	---	---	---	---	---	---	---	
111+20	39.6' RT	1	---	---	---	---	---	---	---	---	---	---	---	---	---	---	---	---	
TOTALS			35	5	17	15													

EROSION MAT ITEMS

CATEGORY	STAGE	STATION - STATION	LOCATION	628.2004 EROSION MAT CLASS I TYPE B SY	628.2006 EROSION MAT URBAN CLASS I TYPE A SY	628.2027 EROSION MAT CLASS II TYPE C SY	628.2033 EROSION MAT CLASS III TYPE B SY
0000	STAGE 2	94+00 - 100+00	RT	880	570	---	---
		100+00 - 113+00	RT	1,550	900	---	---
		STAGE 2 (SUBTOTAL)		2,430	1,470	0	0
STAGE 3	STAGE 3	101+30 - 107+00	LT	880	0	640	640
		STAGE 3 (SUBTOTAL)		880	0	640	640
		UNDISTRIBUTED		331	147	64	64
TOTALS				3,641	1,617	704	704

TURBIDITY BARRIERS

CATEGORY	STATION	LOCATION	628.6005 SY	REMARKS
0000	14+75 D	RT/LT	45	ROCK RIVER OUTFALL

Addendum No. 01
ID 5350-00-74
Revised Sheet 93
March 1, 2016

CULVERT PIPE CHECKS

CATEGORY	LOCATION	628.7555 EACH
0010	101+82 LT	2
	103+65 LT	2
	105+86 LT	2
	106+17 RT	16
	UNDISTRIBUTED	2
	TOTAL	24

MULCHING

CATEGORY	STAGE	STATION - STATION	LOCATION	627.0200 SY	REMARKS
0010	STAGE 3	90+50 - 100+00	LT	1,000	
		100+00 - 113+60	LT	800	
		SUBTOTAL (STAGE 3)		1,800	
		UNDISTRIBUTED		450	
		TOTAL		2,250	

ROCK BAGS

CATEGORY	STATION	LOCATION	625.7570 EACH	REMARKS
0010	101+60	LT	8	SINGLE LAYER
	102+50	LT	8	SINGLE LAYER
	103+01	LT	8	SINGLE LAYER
	111+45	RT	8	SINGLE LAYER
	112+50	RT	8	SINGLE LAYER
	11+65 D	LT/RT	8	SINGLE LAYER
	11+65 D	LT/RT	16	MULTIPLE LAYER
	12+65 D	LT/RT	8	SINGLE LAYER
	12+65 D	LT/RT	16	MULTIPLE LAYER
	13+65 D	LT/RT	8	SINGLE LAYER
	13+65 D	LT/RT	16	MULTIPLE LAYER
	UNDISTRIBUTED		16	
	TOTAL		128	

FINISHING ITEMS

CATEGORY	STAGE	STATION - STATION	LOCATION	625.0100 TOPSOIL SY	625.0500 SALVAGED TOPSOIL SY	629.0210 FERTILIZER CWT	630.0170 SEEDING MIXTURE NO. 30 LB	630.0200 SEEDING MIXTURE NO. 60 LB	630.0160 SEEDING MIXTURE NO. 60 AREAS MGAL	SPV.0200.01 WATER FOR SEEDED AREAS	REMARKS
0010	STAGE 2	92+68 - 100+00	RT	1,200	---	0.8	20	---	35	140	
		100+00 - 113+00	RT	2,300	---	1.4	40	---	50	260	
		100+75 CR - 102+10 CR	RT	220	---	0.1	4	---	6	25	
		100+75 CR - 102+10 CR	LT	120	---	0.1	2	---	3	15	
		SUBTOTALS (STAGE 2)		3,840	0	2.4	66	0	104	440	
	STAGE 3	90+50 - 100+00	LT	1,000	---	0.6	20	---	25	110	
		100+00 - 113+60	LT	1,700	---	1.1	30	---	45	190	
		10+59 D - 14+74 D	LT/RT	---	640	0.4	---	3	---	70	
		SUBTOTALS (STAGE 3)		2,700	640	2.1	50	3	70	370	
		UNDISTRIBUTED		---	---	1.1	29	---	44	2	
		TOTALS		6,540	640	5.6	145	3	218	810	

Addendum No. 01
 ID 5350-00-74
 Revised Sheet 94
 March 1, 2016

SCHEDULE OF ITEMS

REVISED:

CONTRACT:
20160308006PROJECT(S):
5350-00-74FEDERAL ID(S):
WISC 2016049

CONTRACTOR : _____

LINE NO	ITEM DESCRIPTION	APPROX. QUANTITY AND UNITS	UNIT PRICE		BID AMOUNT	
			DOLLARS	CTS	DOLLARS	CTS

SECTION 0001 Contract Items

0020	201.0205 Grubbing	20.000 STA
0030	203.0100 Removing Small Pipe Culverts	25.000 EACH
0040	204.0100 Removing Pavement	2,272.000 SY
0050	204.0150 Removing Curb & Gutter	85.000 LF
0060	204.0155 Removing Concrete Sidewalk	772.000 SY
0070	204.0165 Removing Guardrail	125.000 LF
0080	204.0170 Removing Fence	110.000 LF
0090	204.0180 Removing Delineators and Markers	12.000 EACH
0100	204.0185 Removing Masonry	8.600 CY
0110	204.0195 Removing Concrete Bases	10.000 EACH

SCHEDULE OF ITEMS

REVISED:

CONTRACT:
20160308006PROJECT(S):
5350-00-74FEDERAL ID(S):
WISC 2016049

CONTRACTOR : _____

LINE NO	ITEM DESCRIPTION	APPROX. QUANTITY AND UNITS	UNIT PRICE		BID AMOUNT	
			DOLLARS	CTS	DOLLARS	CTS
0120	204.0210 Removing Manholes	1.000 EACH
0130	204.0220 Removing Inlets	2.000 EACH
0160	204.0245 Removing Storm Sewer (size) 01. 18-Inch	111.000 LF
0170	204.0245 Removing Storm Sewer (size) 02. 19x30-Inch	170.000 LF
0180	204.0245 Removing Storm Sewer (size) 03. 22x34-Inch	69.000 LF
0190	204.0280 Sealing Pipes	1.000 EACH
0200	204.0291.S Abandoning Sewer	9.500 CY
0210	204.9060.S Removing (item description) 01. Residential Light Pole	2.000 EACH
0220	204.9060.S Removing (item description) 02. Brick Pillar	2.000 EACH
0230	204.9090.S Removing (item description) 01. Landscaping Blocks	15.000 LF
0240	204.9090.S Removing (item description) 02. Residential Decorative Fence	20.000 LF

SCHEDULE OF ITEMS

REVISED:

CONTRACT:
20160308006PROJECT(S):
5350-00-74FEDERAL ID(S):
WISC 2016049

CONTRACTOR : _____

LINE NO	ITEM DESCRIPTION	APPROX. QUANTITY AND UNITS	UNIT PRICE		BID AMOUNT	
			DOLLARS	CTS	DOLLARS	CTS
0250	204.9165.S Removing (item description) 01. Block Retaining Wall	413.000 SF
0260	205.0100 Excavation Common	5,492.000 CY
0270	213.0100 Finishing Roadway (project) 01. 5350-00-74	1.000 EACH
0280	305.0110 Base Aggregate Dense 3/4-Inch	385.000 TON
0290	305.0120 Base Aggregate Dense 1 1/4-Inch	5,670.000 TON
0300	305.0130 Base Aggregate Dense 3-Inch	6,230.000 TON
0310	330.0100 Mill and Relay	5,300.000 SY
0320	416.0160 Concrete Driveway 6-Inch	455.000 SY
0330	440.4410 Incentive IRI Ride	2,560.000 DOL	1.00000	.	2560.00	.
0340	455.0105 Asphaltic Material PG58-28	137.000 TON
0350	455.0120 Asphaltic Material PG64-28	90.000 TON

SCHEDULE OF ITEMS

REVISED:

CONTRACT:
20160308006PROJECT(S):
5350-00-74FEDERAL ID(S):
WISC 2016049

CONTRACTOR : _____

LINE NO	ITEM DESCRIPTION	APPROX. QUANTITY AND UNITS	UNIT PRICE		BID AMOUNT	
			DOLLARS	CTS	DOLLARS	CTS
0360	455.0605 Tack Coat	886.000 GAL	.		.	
0370	460.1110 HMA Pavement Type E-10	4,146.000 TON	.		.	
0380	460.2000 Incentive Density HMA Pavement	2,660.000 DOL	1.00000		2660.00	
0390	460.4110.S Reheating HMA Pavement Longitudinal Joints	1,420.000 LF	.		.	
0400	465.0110 Asphaltic Surface Patching	50.000 TON	.		.	
0410	465.0120 Asphaltic Surface Driveways and Field Entrances	225.000 TON	.		.	
0420	465.0125 Asphaltic Surface Temporary	32.000 TON	.		.	
0430	465.0315 Asphaltic Flumes	5.000 SY	.		.	
0440	504.2000.S Precast Concrete Box Culvert (ft X ft) 01. 3 FT x 6 FT	72.000 LF	.		.	
0450	520.1018 Apron Endwalls for Culvert Pipe 18-Inch	4.000 EACH	.		.	
0460	520.3318 Culvert Pipe Class III-A 18-Inch	54.000 LF	.		.	

SCHEDULE OF ITEMS

REVISED:

CONTRACT:
20160308006PROJECT(S):
5350-00-74FEDERAL ID(S):
WISC 2016049

CONTRACTOR : _____

LINE NO	ITEM DESCRIPTION	APPROX. QUANTITY AND UNITS	UNIT PRICE		BID AMOUNT	
			DOLLARS	CTS	DOLLARS	CTS
0470	520.8000 Concrete Collars for Pipe	1.000 EACH	.		.	
0480	522.1012 Apron Endwalls for Culvert Pipe Reinforced Concrete 12-Inch	1.000 EACH	.		.	
0490	522.1018 Apron Endwalls for Culvert Pipe Reinforced Concrete 18-Inch	2.000 EACH	.		.	
0500	601.0409 Concrete Curb & Gutter 30-Inch Type A	6.000 LF	.		.	
0510	601.0411 Concrete Curb & Gutter 30-Inch Type D	1,995.000 LF	.		.	
0520	602.0405 Concrete Sidewalk 4-Inch	2,850.000 SF	.		.	
0530	602.0410 Concrete Sidewalk 5-Inch	8,280.000 SF	.		.	
0540	602.0505 Curb Ramp Detectable Warning Field Yellow	40.000 SF	.		.	
0550	603.1236 Concrete Barrier Type S36A	125.000 LF	.		.	
0560	606.0100 Riprap Light	9.000 CY	.		.	

SCHEDULE OF ITEMS

REVISED:

CONTRACT:
20160308006PROJECT(S):
5350-00-74FEDERAL ID(S):
WISC 2016049

CONTRACTOR : _____

LINE NO	ITEM DESCRIPTION	APPROX. QUANTITY AND UNITS	UNIT PRICE		BID AMOUNT	
			DOLLARS	CTS	DOLLARS	CTS
0570	606.0200 Riprap Medium	74.000 CY	.		.	
0580	608.0312 Storm Sewer Pipe Reinforced Concrete Class III 12-Inch	65.000 LF	.		.	
0590	608.0315 Storm Sewer Pipe Reinforced Concrete Class III 15-Inch	27.000 LF	.		.	
0600	608.0318 Storm Sewer Pipe Reinforced Concrete Class III 18-Inch	50.000 LF	.		.	
0610	608.0412 Storm Sewer Pipe Reinforced Concrete Class IV 12-Inch	276.000 LF	.		.	
0620	608.0415 Storm Sewer Pipe Reinforced Concrete Class IV 15-Inch	108.000 LF	.		.	
0630	608.0418 Storm Sewer Pipe Reinforced Concrete Class IV 18-Inch	343.000 LF	.		.	
0640	608.0424 Storm Sewer Pipe Reinforced Concrete Class IV 24-Inch	210.000 LF	.		.	
0650	610.0134 Storm Sewer Pipe Reinforced Concrete Horizontal Elliptical Class HE-III 34x53-Inch	123.000 LF	.		.	
0660	610.0419 Storm Sewer Pipe Reinforced Concrete Horizontal Elliptical Class HE-IV 19x30-Inch	17.000 LF	.		.	

SCHEDULE OF ITEMS

REVISED:

CONTRACT:
20160308006PROJECT(S):
5350-00-74FEDERAL ID(S):
WISC 2016049

CONTRACTOR : _____

LINE NO	ITEM DESCRIPTION	APPROX. QUANTITY AND UNITS	UNIT PRICE		BID AMOUNT	
			DOLLARS	CTS	DOLLARS	CTS
0670	610.0424 Storm Sewer Pipe Reinforced Concrete Horizontal Elliptical Class HE-IV 24x38-Inch	300.000 LF
0680	610.0434 Storm Sewer Pipe Reinforced Concrete Horizontal Elliptical Class HE-IV 34x53-Inch	579.000 LF
0690	611.0420 Reconstructing Manholes	5.000 EACH
0700	611.0535 Manhole Covers Type J-Special	15.000 EACH
0710	611.0545 Manhole Covers Type L	2.000 EACH
0720	611.0624 Inlet Covers Type H	18.000 EACH
0730	611.0639 Inlet Covers Type H-S	3.000 EACH
0740	611.0642 Inlet Covers Type MS	19.000 EACH
0750	611.2004 Manholes 4-FT Diameter	4.000 EACH
0760	611.2005 Manholes 5-FT Diameter	3.000 EACH

SCHEDULE OF ITEMS

REVISED:

CONTRACT:
20160308006PROJECT(S):
5350-00-74FEDERAL ID(S):
WISC 2016049

CONTRACTOR : _____

LINE NO	ITEM DESCRIPTION	APPROX. QUANTITY AND UNITS	UNIT PRICE		BID AMOUNT	
			DOLLARS	CTS	DOLLARS	CTS
0770	611.2006 Manholes 6-FT Diameter	4.000 EACH	.		.	
0780	611.2008 Manholes 8-FT Diameter	10.000 EACH	.		.	
0790	611.3230 Inlets 2x3-FT	14.000 EACH	.		.	
0800	611.3901 Inlets Median 1 Grate	11.000 EACH	.		.	
0810	611.3902 Inlets Median 2 Grate	2.000 EACH	.		.	
0820	611.8110 Adjusting Manhole Covers	4.000 EACH	.		.	
0830	611.8120.S Cover Plates Temporary	1.000 EACH	.		.	
0840	612.0902.S Insulation Board Polystyrene (inch) 01. 2-Inch	46.700 SY	.		.	
0850	614.0800 Crash Cushions Permanent	2.000 EACH	.		.	
0860	618.0100 Maintenance And Repair of Haul Roads (project) 01. 5350-00-74	1.000 EACH	.		.	
0870	619.1000 Mobilization	1.000 EACH	.		.	

SCHEDULE OF ITEMS

REVISED:

CONTRACT:
20160308006PROJECT(S):
5350-00-74FEDERAL ID(S):
WISC 2016049

CONTRACTOR : _____

LINE NO	ITEM DESCRIPTION	APPROX. QUANTITY AND UNITS	UNIT PRICE		BID AMOUNT	
			DOLLARS	CTS	DOLLARS	CTS
0880	620.0300 Concrete Median Sloped Nose	270.000 SF
0890	623.0200 Dust Control Surface Treatment	14,500.000 SY
0900	624.0100 Water	27.500 MGAL
0910	625.0100 Topsoil	6,540.000 SY
0920	625.0500 Salvaged Topsoil	640.000 SY
0930	627.0200 Mulching	2,250.000 SY
0940	628.1504 Silt Fence	1,650.000 LF
0950	628.1520 Silt Fence Maintenance	3,300.000 LF
0960	628.1905 Mobilizations Erosion Control	7.000 EACH
0970	628.1910 Mobilizations Emergency Erosion Control	9.000 EACH
0980	628.2004 Erosion Mat Class I Type B	3,641.000 SY

SCHEDULE OF ITEMS

REVISED:

CONTRACT:
20160308006PROJECT(S):
5350-00-74FEDERAL ID(S):
WISC 2016049

CONTRACTOR : _____

LINE NO	ITEM DESCRIPTION	APPROX. QUANTITY AND UNITS	UNIT PRICE		BID AMOUNT	
			DOLLARS	CTS	DOLLARS	CTS
0990	628.2006 Erosion Mat Urban Class I Type A	1,617.000 SY
1000	628.2027 Erosion Mat Class II Type C	704.000 SY
1010	628.2033 Erosion Mat Class III Type B	704.000 SY
1020	628.6005 Turbidity Barriers	45.000 SY
1030	628.7005 Inlet Protection Type A	35.000 EACH
1040	628.7010 Inlet Protection Type B	5.000 EACH
1050	628.7015 Inlet Protection Type C	17.000 EACH
1060	628.7020 Inlet Protection Type D	15.000 EACH
1070	628.7555 Culvert Pipe Checks	24.000 EACH
1080	628.7570 Rock Bags	128.000 EACH
1090	629.0210 Fertilizer Type B	5.600 CWT

SCHEDULE OF ITEMS

REVISED:

CONTRACT:
20160308006PROJECT(S):
5350-00-74FEDERAL ID(S):
WISC 2016049

CONTRACTOR : _____

LINE NO	ITEM DESCRIPTION	APPROX. QUANTITY AND UNITS	UNIT PRICE		BID AMOUNT	
			DOLLARS	CTS	DOLLARS	CTS
1100	630.0130 Seeding Mixture No. 30	145.000 LB
1110	630.0160 Seeding Mixture No. 60	11.000 LB
1120	630.0170 Seeding Mixture No. 70	3.000 LB
1130	630.0200 Seeding Temporary	218.000 LB
1140	633.5200 Markers Culvert End	2.000 EACH
1150	634.0614 Posts Wood 4x6-Inch X 14-FT	6.000 EACH
1160	634.0616 Posts Wood 4x6-Inch X 16-FT	14.000 EACH
1170	637.2210 Signs Type II Reflective H	104.000 SF
1180	637.2215 Signs Type II Reflective H Folding	54.000 SF
1190	637.2230 Signs Type II Reflective F	74.250 SF
1200	638.2602 Removing Signs Type II	9.000 EACH

SCHEDULE OF ITEMS

REVISED:

CONTRACT:
20160308006PROJECT(S):
5350-00-74FEDERAL ID(S):
WISC 2016049

CONTRACTOR : _____

LINE NO	ITEM DESCRIPTION	APPROX. QUANTITY AND UNITS	UNIT PRICE		BID AMOUNT	
			DOLLARS	CTS	DOLLARS	CTS
1210	638.3000 Removing Small Sign Supports	7.000 EACH	.		.	
1220	642.5201 Field Office Type C	1.000 EACH	.		.	
1230	643.0100 Traffic Control (project) 01. 5350-00-74	1.000 EACH	.		.	
1240	643.0300 Traffic Control Drums	46,165.000 DAY	.		.	
1250	643.0410 Traffic Control Barricades Type II	130.000 DAY	.		.	
1260	643.0420 Traffic Control Barricades Type III	1,300.000 DAY	.		.	
1270	643.0500 Traffic Control Flexible Tubular Marker Posts	286.000 EACH	.		.	
1280	643.0600 Traffic Control Flexible Tubular Marker Bases	286.000 EACH	.		.	
1290	643.0705 Traffic Control Warning Lights Type A	2,714.000 DAY	.		.	
1300	643.0715 Traffic Control Warning Lights Type C	7,835.000 DAY	.		.	
1310	643.0800 Traffic Control Arrow Boards	110.000 DAY	.		.	

SCHEDULE OF ITEMS

REVISED:

CONTRACT:
20160308006PROJECT(S):
5350-00-74FEDERAL ID(S):
WISC 2016049

CONTRACTOR : _____

LINE NO	ITEM DESCRIPTION	APPROX. QUANTITY AND UNITS	UNIT PRICE		BID AMOUNT	
			DOLLARS	CTS	DOLLARS	CTS
1320	643.0900 Traffic Control Signs	6,411.000 DAY
1330	643.0920 Traffic Control Covering Signs Type II	2.000 EACH
1340	643.1050 Traffic Control Signs PCMS	63.000 DAY
1350	643.2000 Traffic Control Detour (project) 01. 5350-00-74	1.000 EACH
1360	643.3000 Traffic Control Detour Signs	252.000 DAY
1370	644.1410.S Temporary Pedestrian Surface Asphalt	500.000 SF
1380	644.1420.S Temporary Pedestrian Surface Plywood	250.000 SF
1390	644.1430.S Temporary Pedestrian Surface Plate	250.000 SF
1400	644.1601.S Temporary Curb Ramp	2.000 EACH
1410	644.1616.S Temporary Pedestrian Safety Fence	400.000 LF
1420	645.0120 Geotextile Fabric Type HR	195.000 SY

SCHEDULE OF ITEMS

REVISED:

CONTRACT:
20160308006PROJECT(S):
5350-00-74FEDERAL ID(S):
WISC 2016049

CONTRACTOR : _____

LINE NO	ITEM DESCRIPTION	APPROX. QUANTITY AND UNITS	UNIT PRICE		BID AMOUNT	
			DOLLARS	CTS	DOLLARS	CTS
1430	645.0130 Geotextile Fabric Type R	40.000 SY
1440	646.0106 Pavement Marking Epoxy 4-Inch	18,350.000 LF
1450	646.0126 Pavement Marking Epoxy 8-Inch	530.000 LF
1460	646.0600 Removing Pavement Markings	5,940.000 LF
1470	647.0166 Pavement Marking Arrows Epoxy Type 2	6.000 EACH
1480	647.0356 Pavement Marking Words Epoxy	3.000 EACH
1490	647.0456 Pavement Marking Curb Epoxy	52.000 LF
1500	647.0566 Pavement Marking Stop Line Epoxy 18-Inch	153.000 LF
1510	647.0606 Pavement Marking Island Nose Epoxy	4.000 EACH
1520	647.0726 Pavement Marking Diagonal Epoxy 12-Inch	465.000 LF
1530	647.0766 Pavement Marking Crosswalk Epoxy 6-Inch	205.000 LF

SCHEDULE OF ITEMS

REVISED:

CONTRACT:
20160308006PROJECT(S):
5350-00-74FEDERAL ID(S):
WISC 2016049

CONTRACTOR : _____

LINE NO	ITEM DESCRIPTION	APPROX. QUANTITY AND UNITS	UNIT PRICE		BID AMOUNT	
			DOLLARS	CTS	DOLLARS	CTS
1540	647.0955 Removing Pavement Markings Arrows	3.000 EACH	.		.	
1550	647.0965 Removing Pavement Markings Words	2.000 EACH	.		.	
1560	649.0400 Temporary Pavement Marking Removable Tape 4-Inch	15,625.000 LF	.		.	
1570	649.0403 Temporary Pavement Marking Epoxy 4-Inch	5,880.000 LF	.		.	
1580	652.0225 Conduit Rigid Nonmetallic Schedule 40 2-Inch	1,000.000 LF	.		.	
1590	652.0235 Conduit Rigid Nonmetallic Schedule 40 3-Inch	976.000 LF	.		.	
1600	652.0800 Conduit Loop Detector	1,386.000 LF	.		.	
1610	653.0135 Pull Boxes Steel 24x36-Inch	10.000 EACH	.		.	
1620	653.0140 Pull Boxes Steel 24x42-Inch	7.000 EACH	.		.	
1630	653.0905 Removing Pull Boxes	12.000 EACH	.		.	
1640	654.0101 Concrete Bases Type 1	4.000 EACH	.		.	

SCHEDULE OF ITEMS

REVISED:

CONTRACT:
20160308006PROJECT(S):
5350-00-74FEDERAL ID(S):
WISC 2016049

CONTRACTOR : _____

LINE NO	ITEM DESCRIPTION	APPROX. QUANTITY AND UNITS	UNIT PRICE		BID AMOUNT	
			DOLLARS	CTS	DOLLARS	CTS
1650	654.0102 Concrete Bases Type 2	4.000 EACH	.		.	
1660	654.0113 Concrete Bases Type 13	2.000 EACH	.		.	
1670	654.0217 Concrete Control Cabinet Bases Type 9 Special	1.000 EACH	.		.	
1680	655.0230 Cable Traffic Signal 5-14 AWG	1,597.000 LF	.		.	
1690	655.0240 Cable Traffic Signal 7-14 AWG	560.000 LF	.		.	
1700	655.0250 Cable Traffic Signal 9-14 AWG	180.000 LF	.		.	
1710	655.0260 Cable Traffic Signal 12-14 AWG	57.000 LF	.		.	
1720	655.0305 Cable Type UF 2-12 AWG Grounded	570.000 LF	.		.	
1730	655.0515 Electrical Wire Traffic Signals 10 AWG	2,531.000 LF	.		.	
1740	655.0610 Electrical Wire Lighting 12 AWG	750.000 LF	.		.	
1750	655.0700 Loop Detector Lead In Cable	4,131.000 LF	.		.	

SCHEDULE OF ITEMS

REVISED:

CONTRACT:
20160308006PROJECT(S):
5350-00-74FEDERAL ID(S):
WISC 2016049

CONTRACTOR : _____

LINE NO	ITEM DESCRIPTION	APPROX. QUANTITY AND UNITS	UNIT PRICE		BID AMOUNT	
			DOLLARS	CTS	DOLLARS	CTS
1760	655.0800 Loop Detector Wire	4,640.000 LF
1770	656.0200 Electrical Service Meter Breaker Pedestal (location) 01. USH 51/Cranston Road Intersection	LUMP	LUMP	.	.	.
1780	657.0100 Pedestal Bases	4.000 EACH
1790	657.0255 Transformer Bases Breakaway 11 1/2-Inch Bolt Circle	4.000 EACH
1800	657.0310 Poles Type 3	4.000 EACH
1810	657.0420 Traffic Signal Standards Aluminum 13-FT	3.000 EACH
1820	657.0425 Traffic Signal Standards Aluminum 15-FT	1.000 EACH
1830	657.0614 Luminaire Arms Single Member 4-Inch Clamp 8-FT	6.000 EACH
1840	657.1355 Install Poles Type 12	2.000 EACH
1850	657.1540 Install Monotube Arms 40-FT	2.000 EACH

SCHEDULE OF ITEMS

REVISED:

CONTRACT:
20160308006PROJECT(S):
5350-00-74FEDERAL ID(S):
WISC 2016049

CONTRACTOR : _____

LINE NO	ITEM DESCRIPTION	APPROX. QUANTITY AND UNITS	UNIT PRICE		BID AMOUNT	
			DOLLARS	CTS	DOLLARS	CTS
1860	658.0110 Traffic Signal Face 3-12 Inch Vertical	11.000 EACH	.		.	
1870	658.0115 Traffic Signal Face 4-12 Inch Vertical	3.000 EACH	.		.	
1880	658.0215 Backplates Signal Face 3 Section 12-Inch	11.000 EACH	.		.	
1890	658.0220 Backplates Signal Face 4 Section 12-Inch	3.000 EACH	.		.	
1900	658.0416 Pedestrian Signal Face 16-Inch	2.000 EACH	.		.	
1910	658.0500 Pedestrian Push Buttons	2.000 EACH	.		.	
1920	658.0600 Led Modules 12-Inch Red Ball	11.000 EACH	.		.	
1930	658.0605 Led Modules 12-Inch Yellow Ball	11.000 EACH	.		.	
1940	658.0610 Led Modules 12-Inch Green Ball	11.000 EACH	.		.	
1950	658.0615 Led Modules 12-Inch Red Arrow	3.000 EACH	.		.	
1960	658.0620 Led Modules 12-Inch Yellow Arrow	6.000 EACH	.		.	

SCHEDULE OF ITEMS

REVISED:

CONTRACT:
20160308006PROJECT(S):
5350-00-74FEDERAL ID(S):
WISC 2016049

CONTRACTOR : _____

LINE NO	ITEM DESCRIPTION	APPROX. QUANTITY AND UNITS	UNIT PRICE		BID AMOUNT	
			DOLLARS	CTS	DOLLARS	CTS
1970	658.0625 Led Modules 12-Inch Green Arrow	3.000 EACH	.		.	
1980	658.0635 Led Modules Pedestrian Countdown Timer 16-Inch	2.000 EACH	.		.	
1990	658.5069 Signal Mounting Hardware (location) 01. USH 51/Cranston Road Intersection	LUMP	LUMP		.	
2000	659.1125 Luminaires Utility LED C	6.000 EACH	.		.	
2010	690.0150 Sawing Asphalt	1,785.000 LF	.		.	
2020	690.0250 Sawing Concrete	1,613.000 LF	.		.	
2030	ASP.1T0A On-the-Job Training Apprentice at \$5.00/HR	500.000 HRS	5.00000		2500.00	
2040	ASP.1T0G On-the-Job Training Graduate at \$5. 00/HR	350.000 HRS	5.00000		1750.00	
2050	SPV.0060 Special 01. Apron Endwalls For Storm Sewer Pipe Reinforced Concrete Box 3 FT x 6 FT	1.000 EACH	7000.00000		7000.00	
2060	SPV.0060 Special 02. Concrete Cutoff Wall	1.000 EACH	.		.	

SCHEDULE OF ITEMS

REVISED:

CONTRACT:
20160308006PROJECT(S):
5350-00-74FEDERAL ID(S):
WISC 2016049

CONTRACTOR : _____

LINE NO	ITEM DESCRIPTION	APPROX. QUANTITY AND UNITS	UNIT PRICE		BID AMOUNT	
			DOLLARS	CTS	DOLLARS	CTS
2070	SPV.0060 Special 03. Manholes 9-FT Diameter	2.000 EACH
2080	SPV.0060 Special 04. Manhole Structure 220	1.000 EACH
2090	SPV.0060 Special 05. Inlet Structure 220A	1.000 EACH
2100	SPV.0060 Special 06. Utility Line Opening (ULO)	19.000 EACH
2110	SPV.0090 Special 01. Concrete Curb and Gutter 24-Inch Type D	801.000 LF
2120	SPV.0090 Special 02. SSPRC Horizontal Elliptical Class HE-IV 38x60-Inch	748.000 LF
2130	SPV.0090 Special 03. Protection of Private Sprinkler Systems	449.000 LF
2140	SPV.0105 Special 01. Remove and Transport Traffic Signals USH 51/Cranston Road Intersection	LUMP	LUMP	.	.	.
2150	SPV.0105 Special 02. Survey Project 5350-00-74	LUMP	LUMP	.	.	.
2160	SPV.0120 Special 01. Water For Seeded Areas	810.000 MGAL

SCHEDULE OF ITEMS

REVISED:

CONTRACT:
20160308006

PROJECT(S):
5350-00-74

FEDERAL ID(S):
WISC 2016049

CONTRACTOR : _____

LINE NO	ITEM DESCRIPTION	APPROX. QUANTITY AND UNITS	UNIT PRICE		BID AMOUNT	
			DOLLARS	CTS	DOLLARS	CTS
2170	201.0120 Clearing	50.000				
		ID		.		.
	SECTION 0001 TOTAL					.
	TOTAL BID					.